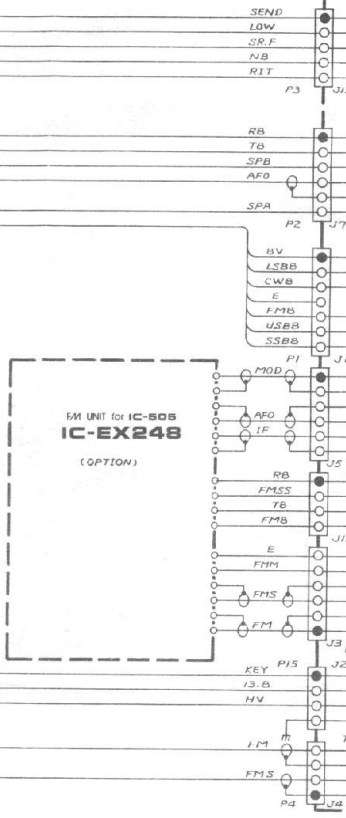


MAIN.A

- IC1 BA401
- IC2 μ PC577H
- IC3 SN76514N
- IC4 μ PC1037H

- Q1 2SA639
- Q2,4,5,20 3SK74
- Q3 2SK19
- Q6-10,13-16,19,22-23 2SC945
- Q11 2SA1015
- Q12 2SK49
- Q17 2SC1971
- Q18 2SC2053
- Q21 2SC133

- D1,2,26-28,40 1T25
- D42,3-7,13-20,23-25,34-37 1S553
- D8,12,22,30 1N60
- D9,10,21 1S953
- D29 1N4002
- D31,32,39 1S555
- D33 1M1402
- D41 13V99
- D38 15CD11

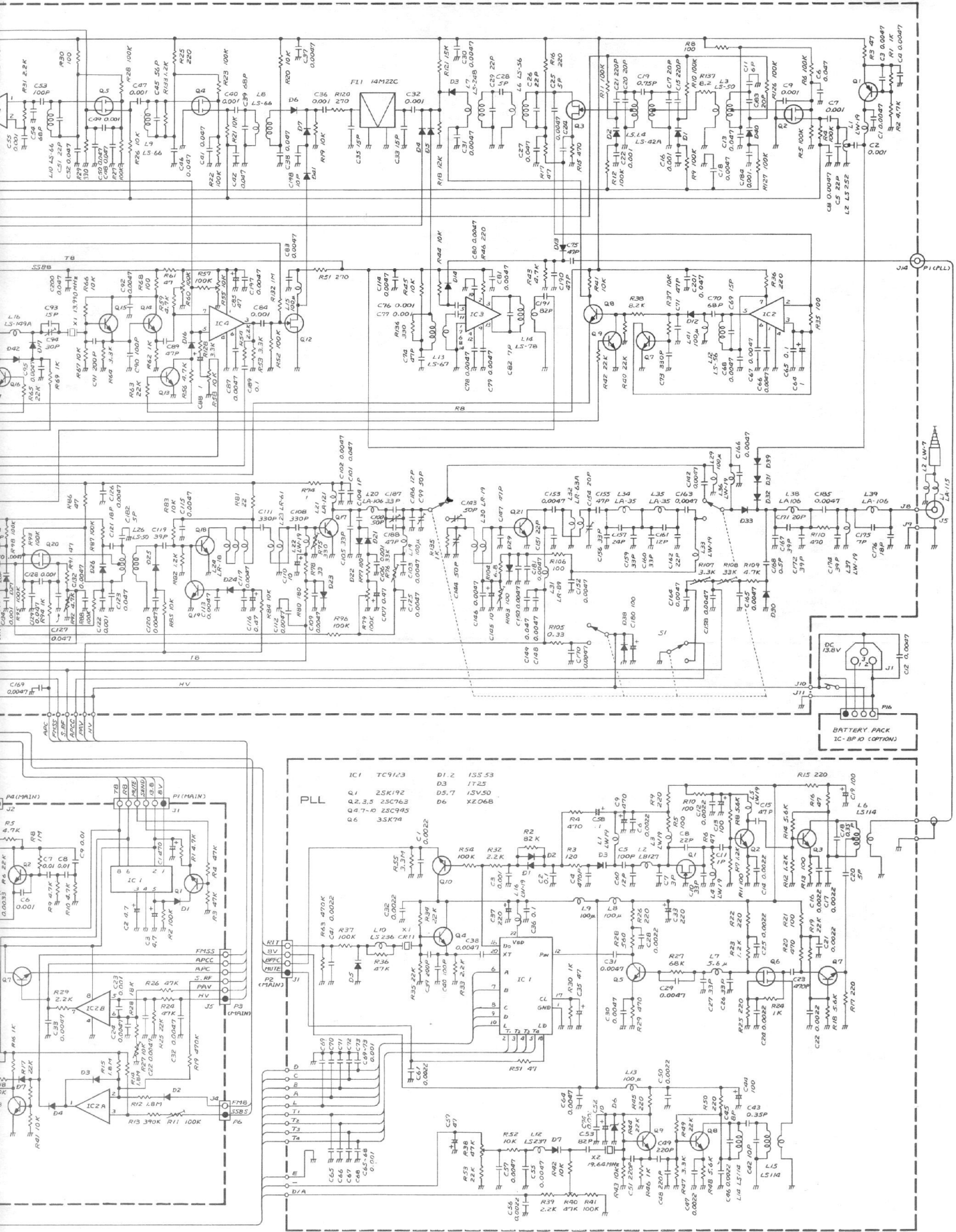


MAIN.B

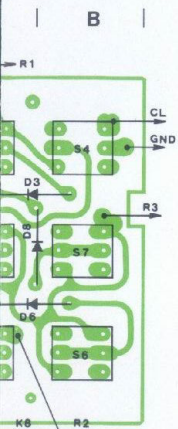
- IC1 M83756
- IC2 NJ4458B
- IC3 μ PC520C2
- IC4 μ PC564M
- Q1-7 2SC945
- D1-4,6-8 1S553

PLL



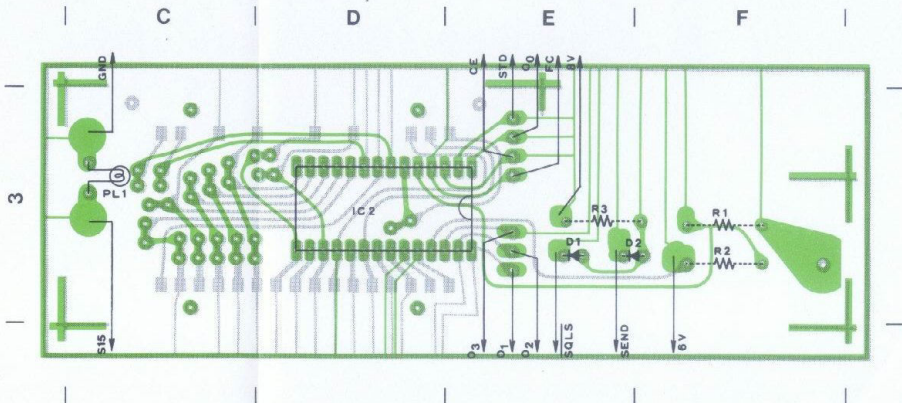


BOARD (1)

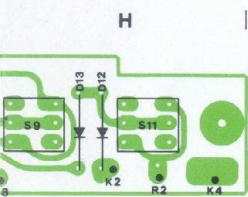


Downloaded by
RadioAmateur.EU

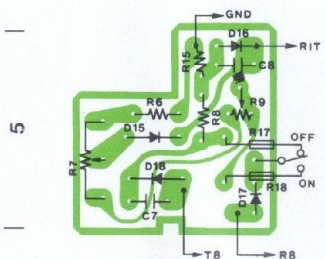
■ DISPLAY BOARD



BOARD (2)

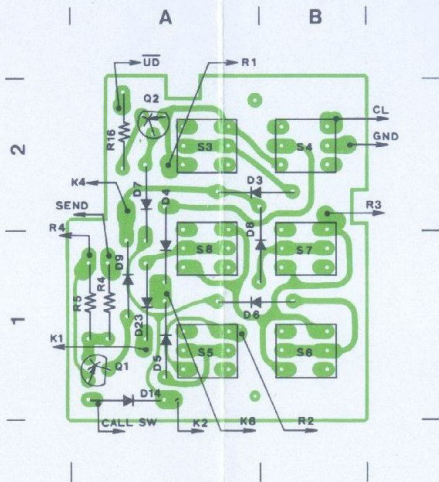


■ RIT BOARD

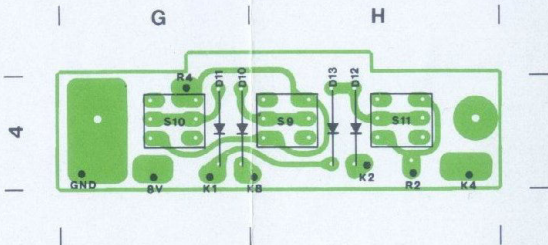


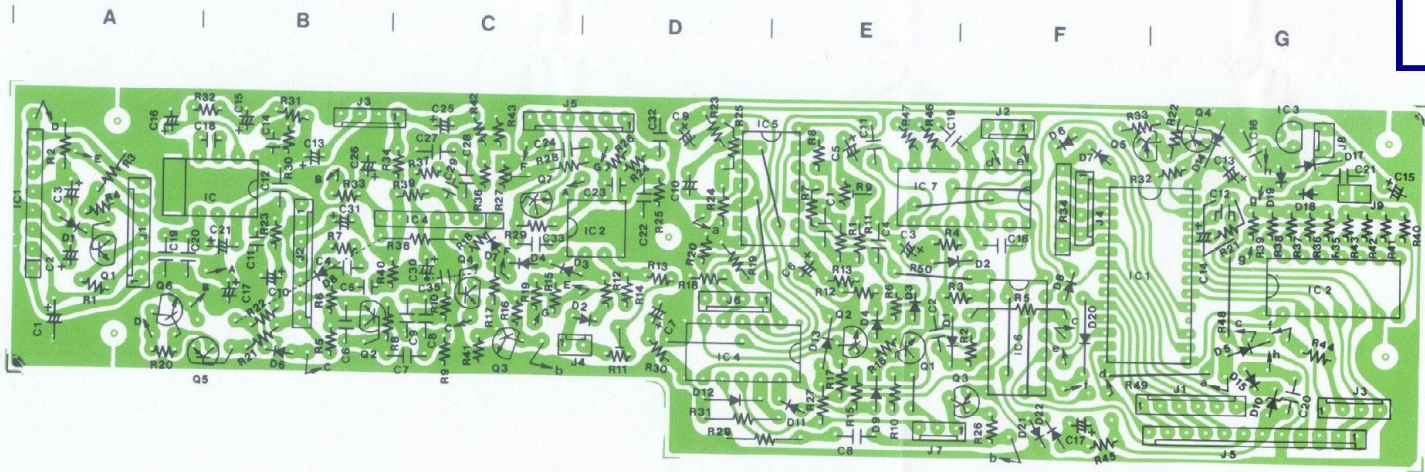
EF UNIT

■ SWITCH BOARD (1)

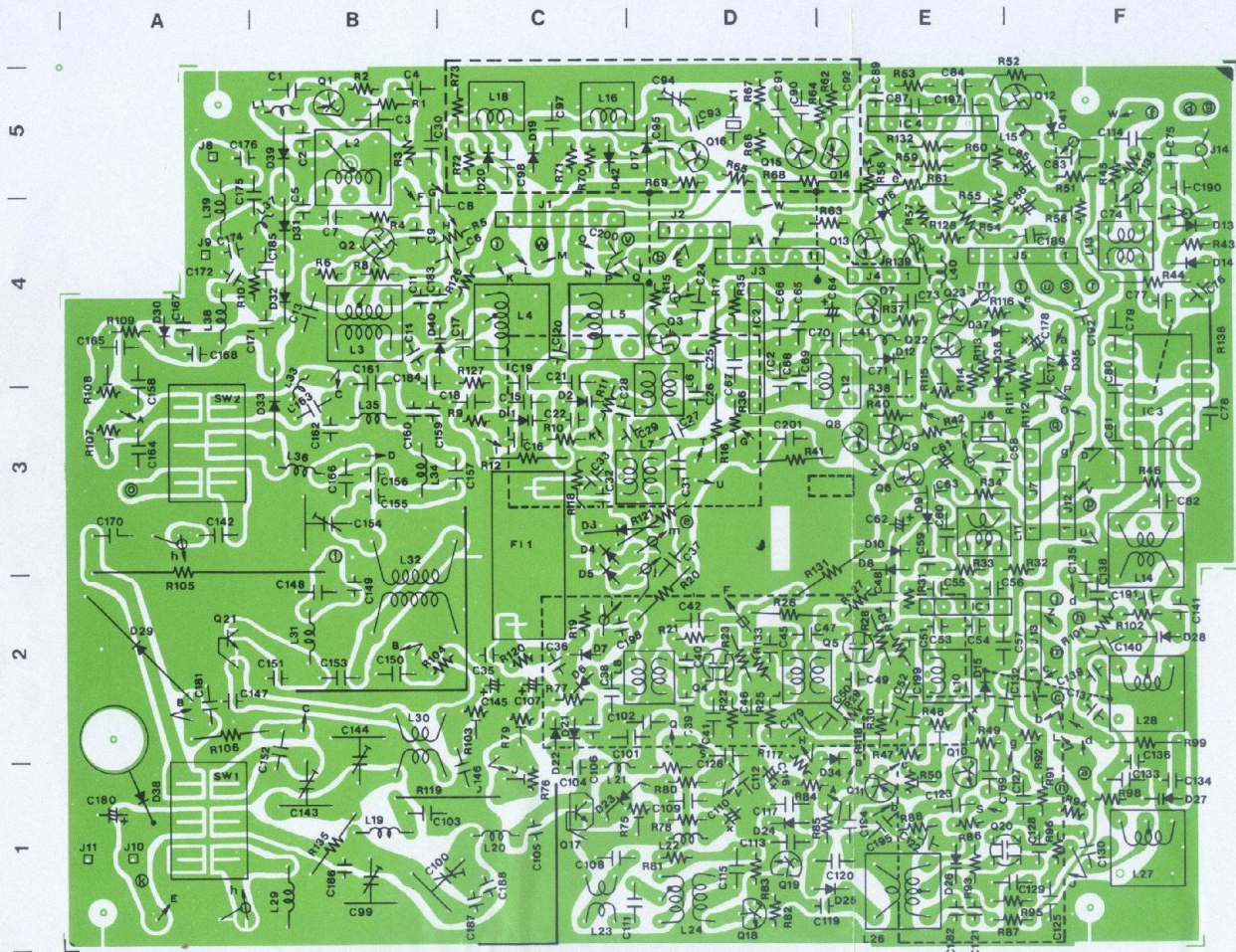


■ SWITCH BOARD (2)

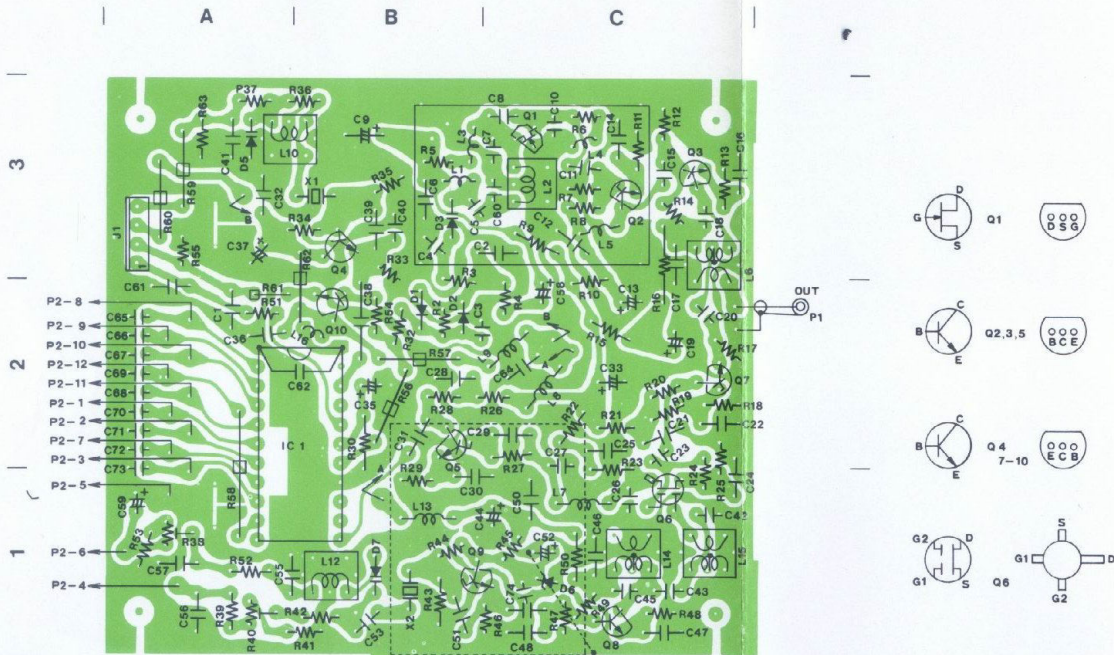




MAIN UNIT

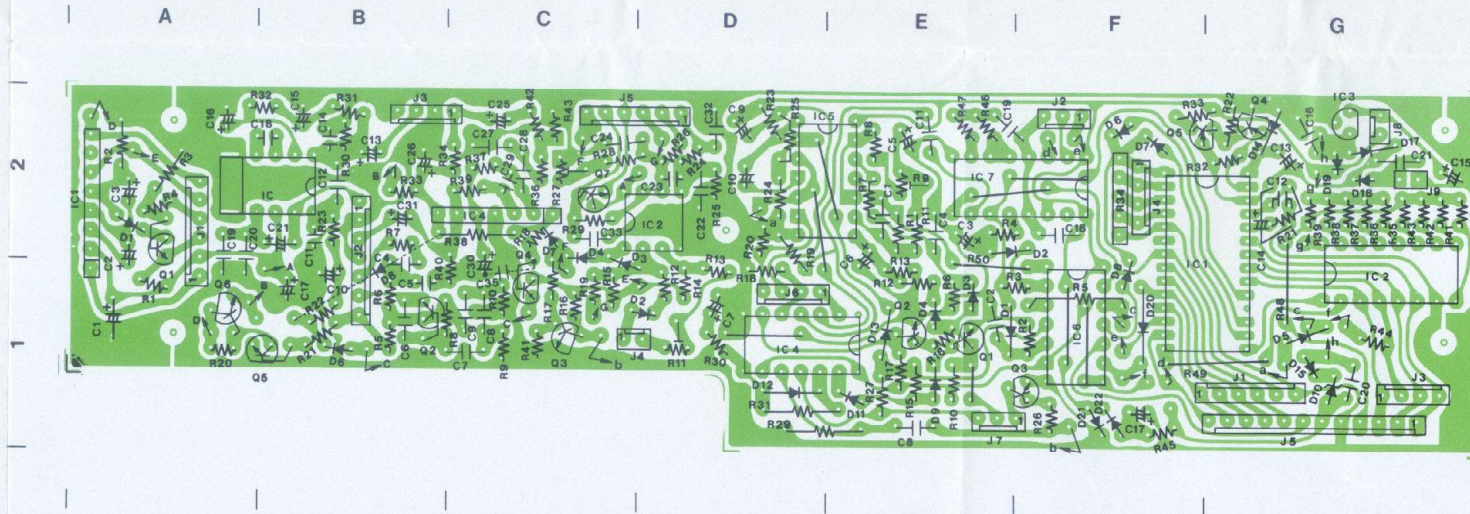


PLL UNIT

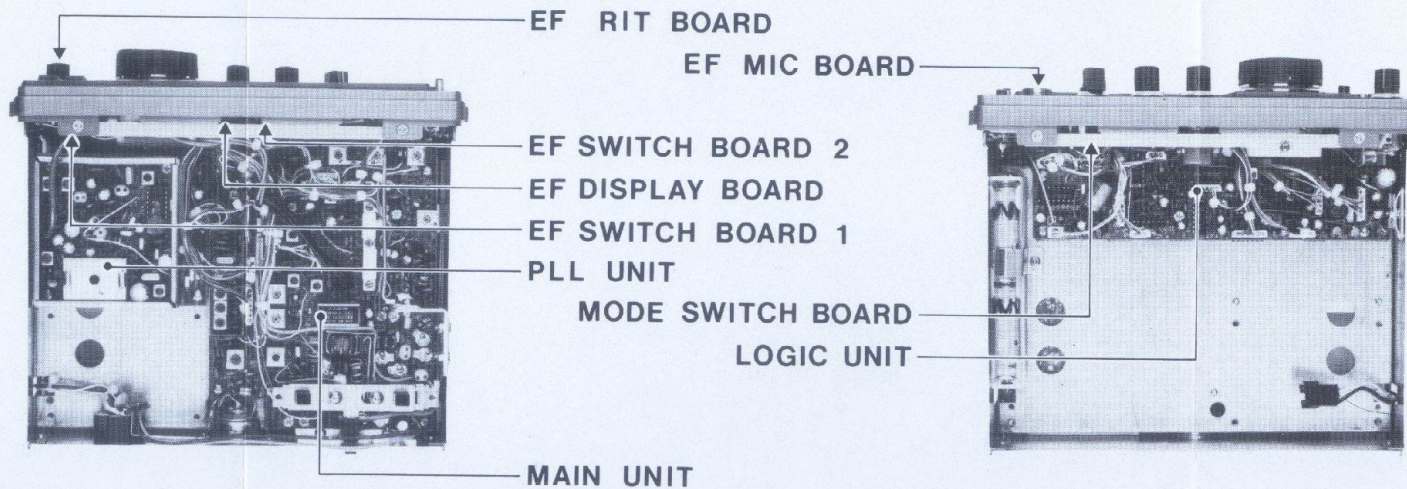


Downloaded by
RadioAmateur.EU

LOGIC UNIT



UNIT LAYOUT



ICOM INCORPORATED

Some components subject to change for an improvement without notice.

Printed in Japan