

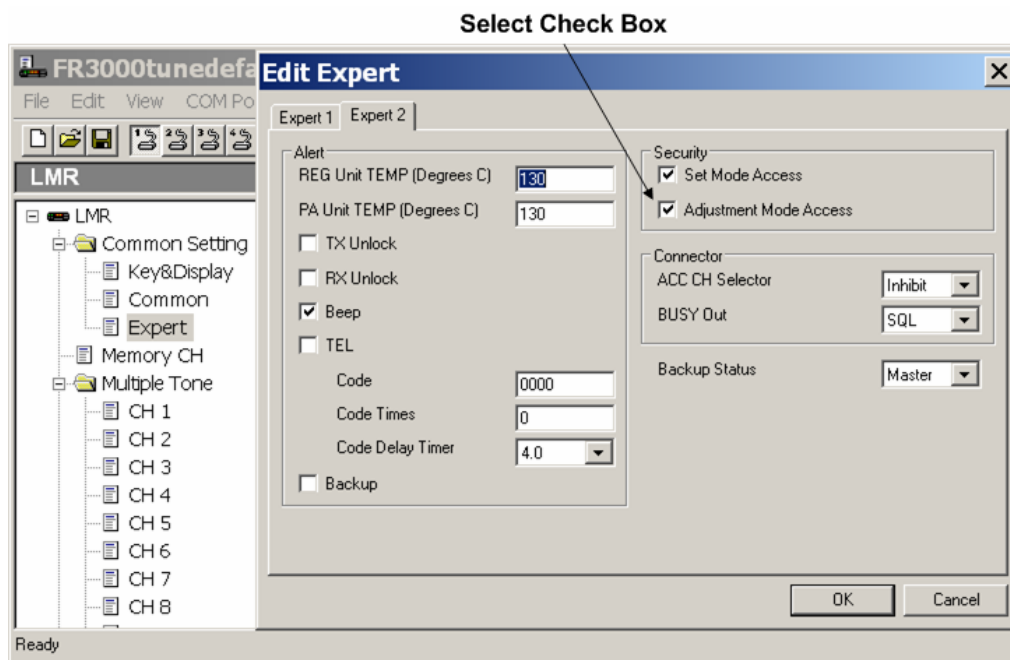
FR3000/FR4000 Repeater Adjustment Mode

Load the icf File

1. Open the CS-F3000 cloning software.
2. Click **File**, then **Open** to select your previously saved default ADJ.icf file (available from Icom Technical Support).

Enabling Adjustment Mode

1. Navigate to **Common Setting**.
2. Click the **Expert** icon.
3. Click the **Expert 2** tab.

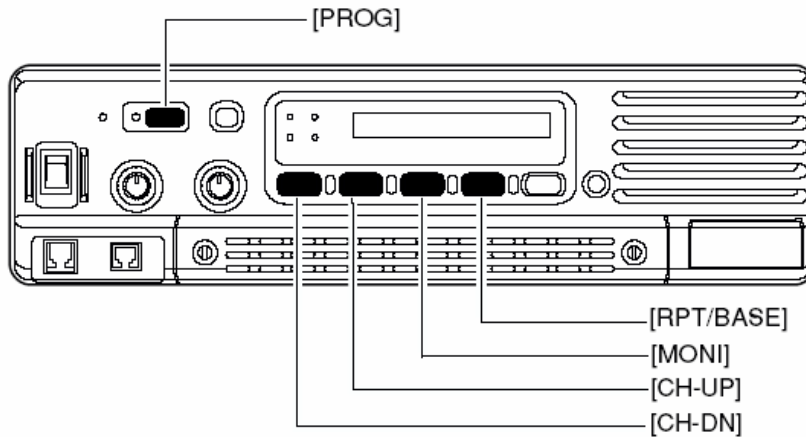


4. Ensure that the **Adjustment Mode Access** checkbox is selected.

Entering the Adjustment Mode

1. Turn the power OFF.
2. Push and hold the [CH-DN] and [CH-UP] buttons, then turn the power ON; keep on pushing the [CH-DN] and [CH-UP] buttons until you hear 1 beep — *within 2 seconds* you must push the [CH-DN] button, then 2 beeps will confirm the mode change.

Operating in the Adjustment Mode



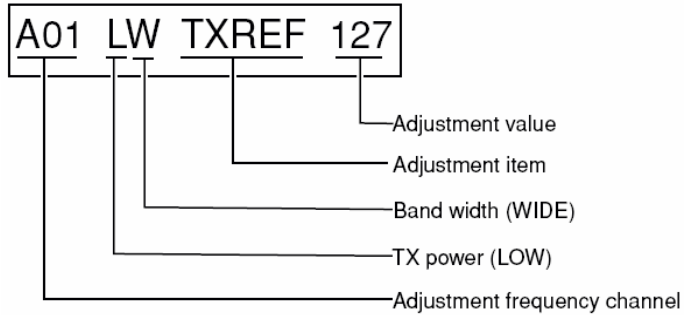
- Change the adjustment frequency channel (+1). : Push the [CH-UP] button.
- Change the adjustment frequency channel (−1). : Push the [CH-DN] button.
- Change the next adjustment item. : Push the [PROG] button.
- Adjust the specified value (+1). : Push the [RPT/BASE] button.
- Adjust the specified value (−1). : Push the [MONI] button.

Adjustment Mode Channel List

Important: After changing any setting in the following table, be sure to push the [CH-UP] buttons to lock the settings. Failure to lock the settings will cause channel to revert to the original settings.

CH	RX	TX	LCD DISPLAY	W/N	ADJUSTMENT
A01	173.925	173.725	A01 LW TXREF ***	W	TVCO/RVCO adjustment. Reference frequency adjustment.
A02	173.925	173.725	A02 LW HRTUN ***	W	RX sensitivity adjustment.
A03	162.075	162.275	A03 LW MRTUN ***	W	RX sensitivity adjustment.
A04	150.075	150.275	A04 LW LRTUN ***	W	RX sensitivity adjustment.
A05	150.075	150.275	A05 LW RPTSQL ***	W	RPT SQL adjustment.
A06	162.075	162.275	A06 HW POWER ***	W	TX power adjustment.
A07	162.075	162.275	A07 LW M DEV ***	W	TX modulation adjustment.
A08	150.075	150.275	A08 LW LMODC***	W	TX modulation adjustment.
A09	173.925	173.725	A09 LW HMODC***	W	TX modulation adjustment.
A10	162.075	162.275	A10 LW CTCDEV***	N	CTCSS modulation adjustment
A11	162.075	162.275	A11 LW DTCADJ ***	W	DTCS modulation adjustment.
A12	162.075	162.275	A12 LN CTCDEV ***	N	CTCSS modulation adjustment. (NARROW)
A13	160.275	165.275	A13 LW RPTAF ***	W	RPT modulation adjustment. (WIDE)
A14	160.275	165.275	A14 LN RPTAF ***	N	RPT mod adjustment. (NARROW)

LCD Display in the Adjustment Mode



Exiting the Adjustment Mode

1. Turn the power OFF.
2. Push and hold the [CH-UP] button, then turn the power ON; keep pushing the [CH-UP] button until you hear 2 beeps.
3. Push the [CH-UP] button, then you will hear 1 beep.

