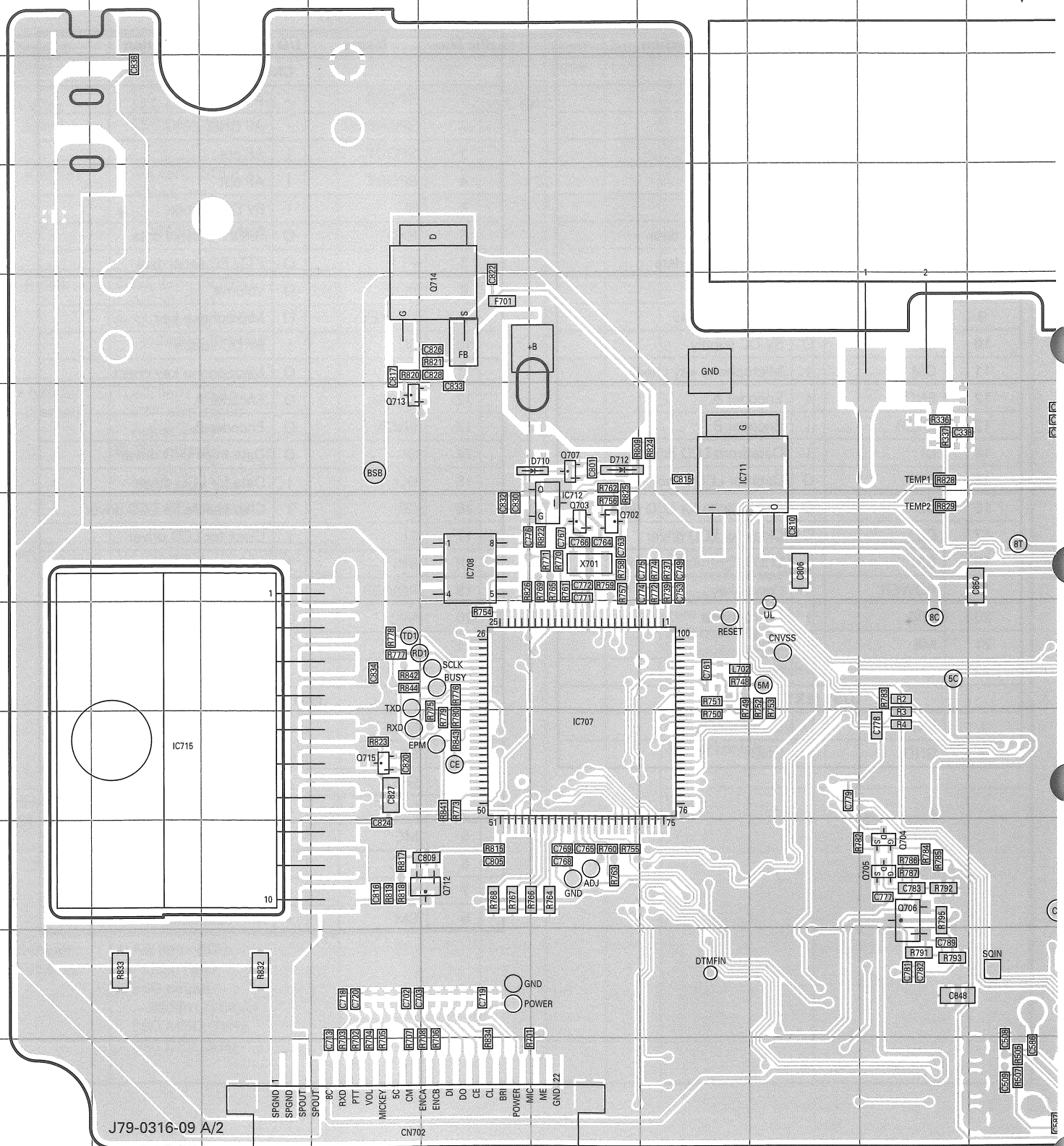


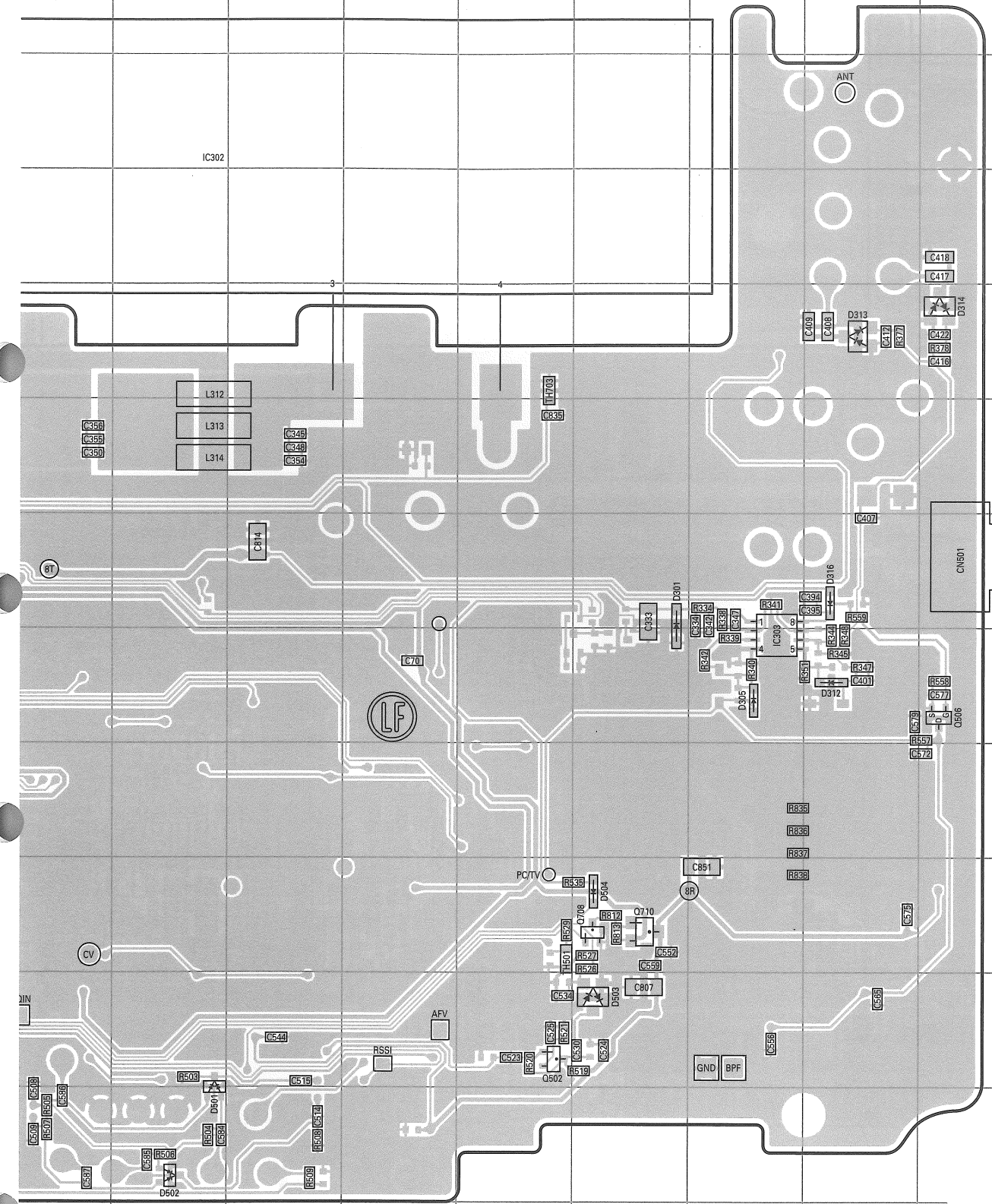
# TM-281A PC BOARD

**TX-RX UNIT (X57-8130-XX) (A/2): TX-RX SECTION**  
**-10: K -21: M2 -22: M3 -23: M4**  
**Component side view (J79-0316-09 A/2)**

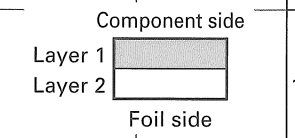


# PC BOARD TM-281A

**TX-RX UNIT (X57-8130-XX) (A/2): TX-RX SECTION**  
**-10: K -21: M2 -22: M3 -23: M4**  
**Component side view (J79-0316-09 A/2)**



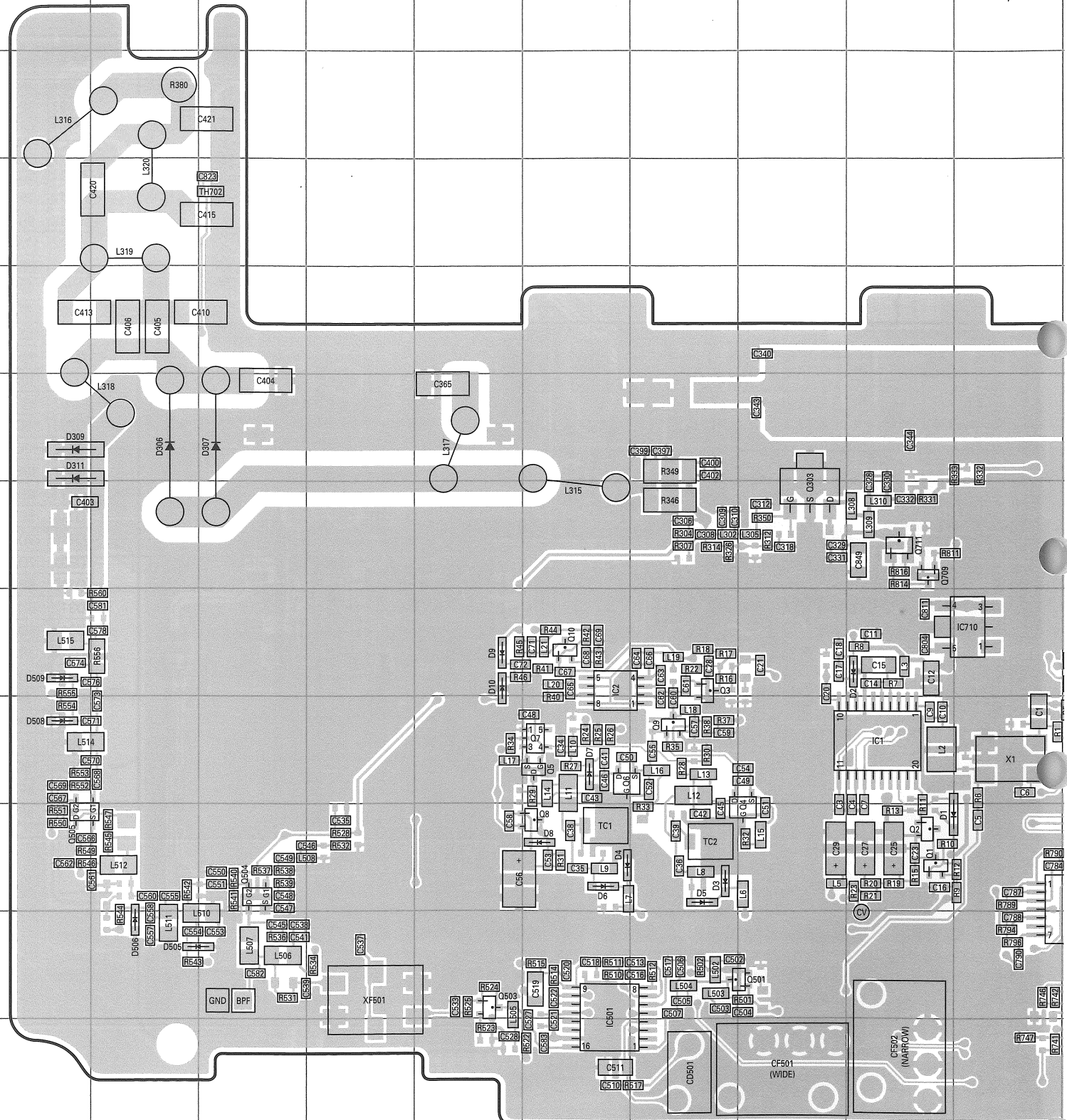
Ref. No.	Address
IC302	3K
IC303	8P
IC707	9F
IC708	7E
IC711	6G
IC712	7F
IC715	9B
Q502	11N
Q506	8R
Q702	7F
Q703	7F
Q704	10I
Q705	10I
Q706	10I
Q707	6F
Q710	10O
Q712	10E
Q713	6D
Q714	5E
Q715	9D
D301	7O
D305	8P
D312	8Q
D313	5Q
D314	5R
D316	7Q
D501	12K
D502	12K
D503	11O
D504	10O
D710	6F
D712	6F





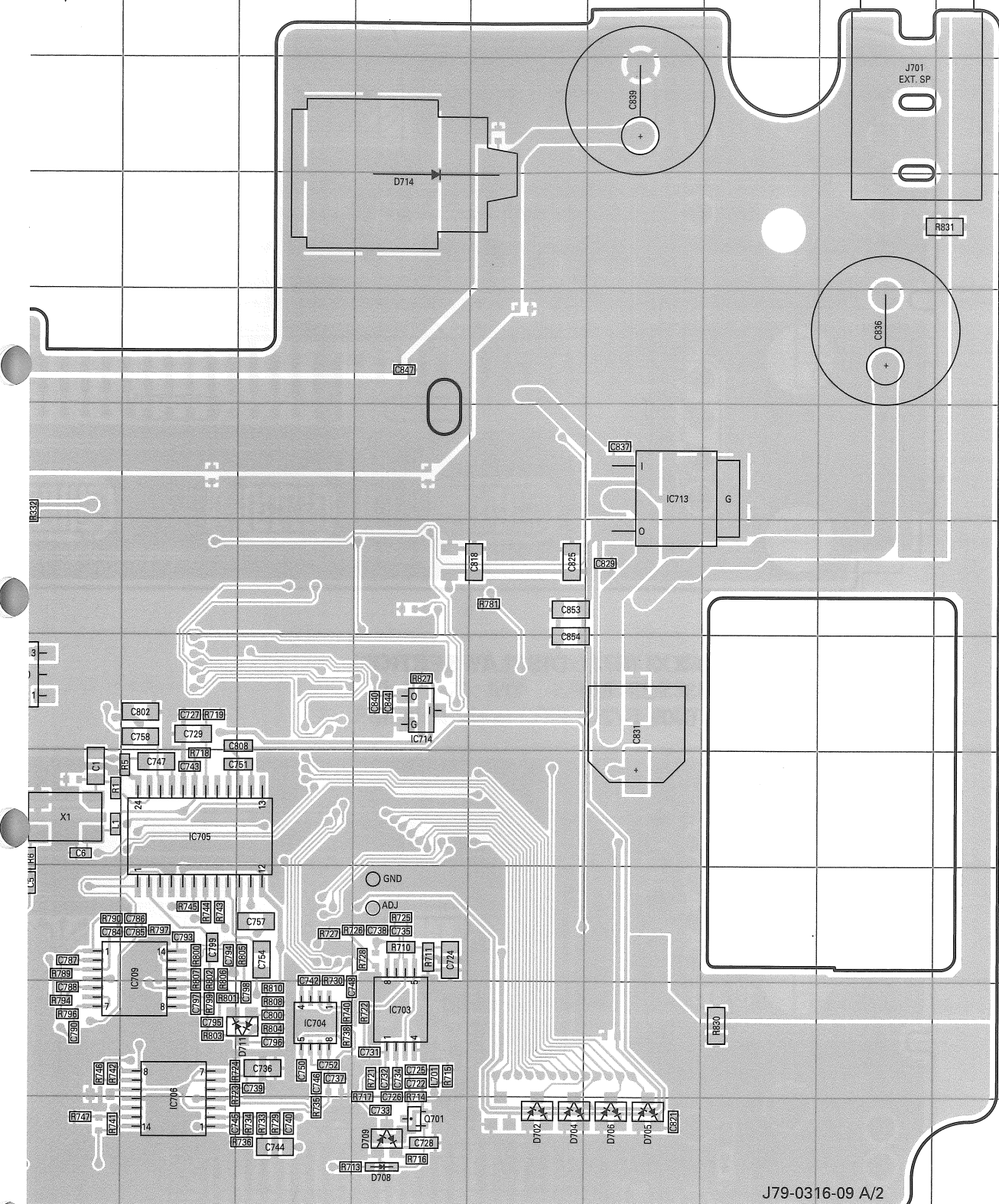
# TM-281A PC BOARD

TX-RX UNIT (X57-8130-XX) (A/2): TX-RX SECTION  
-10: K -21: M2 -22: M3 -23: M4  
Foil side view (J79-0316-09 A/2)



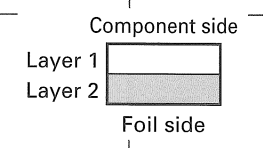
# PC BOARD TM-281A

TX-RX UNIT (X57-8130-XX) (A/2): TX-RX SECTION  
-10: K -21: M2 -22: M3 -23: M4  
Foil side view (J79-0316-09 A/2)



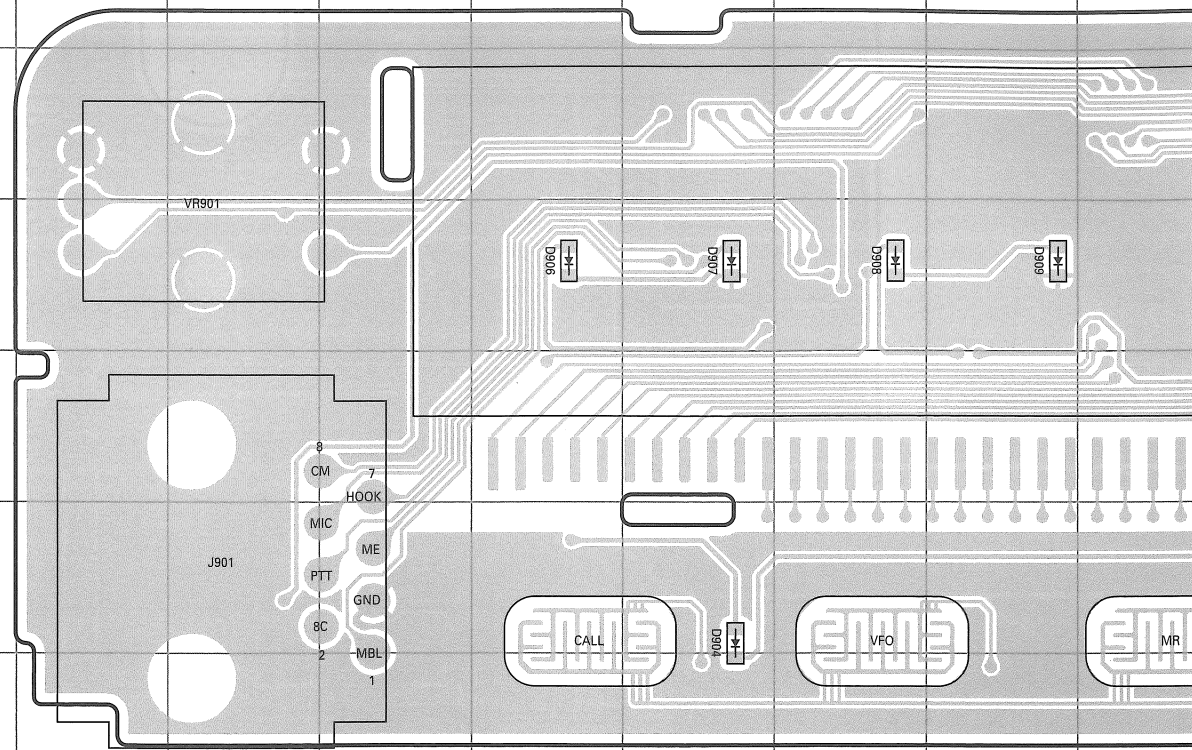
Ref. No.	Address
IC1	9I
IC2	8F
IC501	11F
IC703	11M
IC704	11L
IC705	9K
IC706	12K
IC709	10K
IC710	8J
IC713	6O
IC714	8M
Q1	10I
Q2	10I
Q3	8G
Q4	10H
Q5	9F
Q6	9F
Q7	9F
Q8	10F
Q9	9G
Q10	8F
Q303	7H
Q501	11H
Q503	11E
Q504	10C
Q505	10A
Q701	12M
Q709	7I
Q711	7I
D1	10I
D2	8I
D3	10G
D4	10F
D5	10G
D6	10F
D7	9F
D8	10F
D9	8E
D10	8E
D306	6B
D307	6C
D309	6A
D311	6A
D505	11B
D506	11B
D508	9A
D509	8A
D702	12N
D704	12N
D705	12O
D706	12O
D708	12M
D709	12M
D711	11L
D714	4M

J79-0316-09 A/2

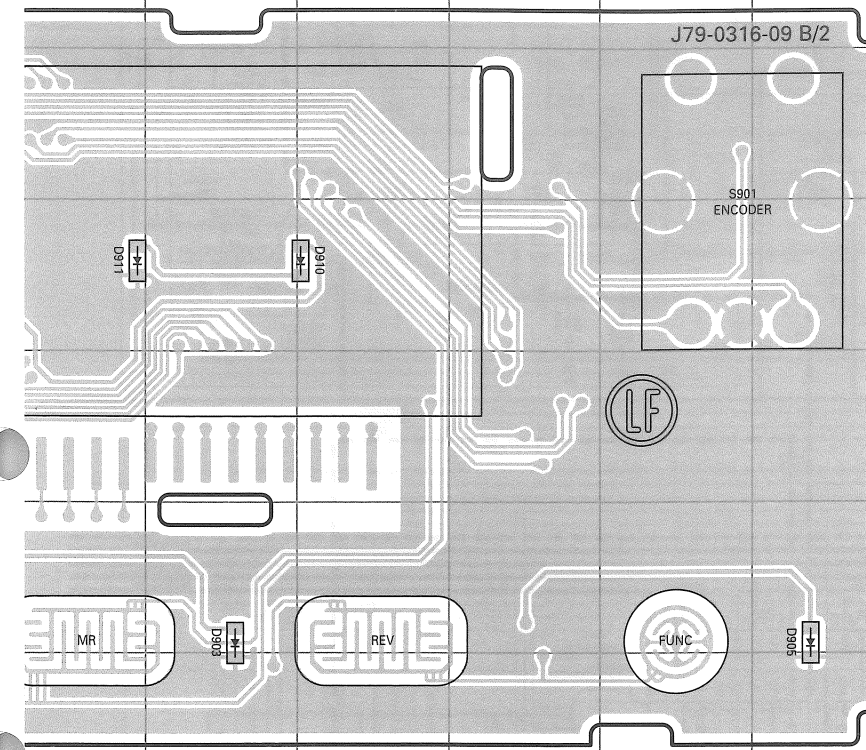




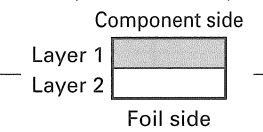
**TX-RX UNIT (X57-8130-XX) (B/2): DISPLAY SECTION**  
 -10: K -21: M2 -22: M3 -23: M4  
 Component side view (J79-0316-09 B/2)



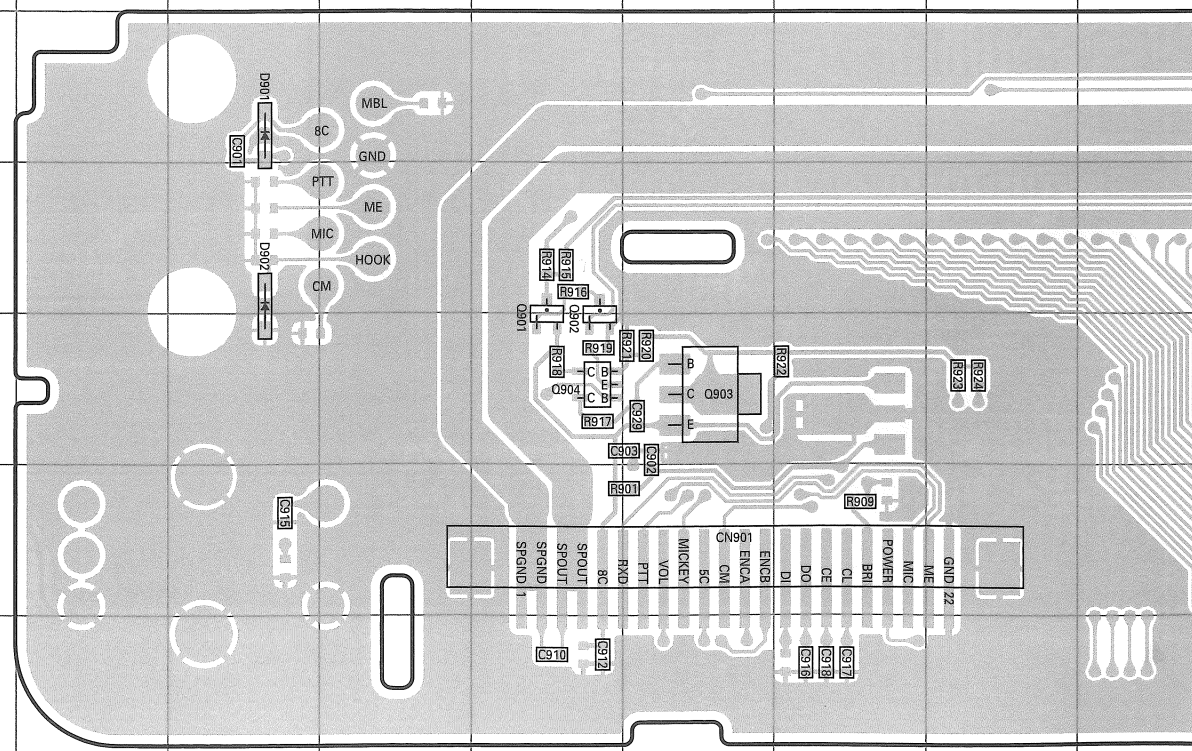
**TX-RX UNIT (X57-8130-XX) (B/2): DISPLAY SECTION**  
 -10: K -21: M2 -22: M3 -23: M4  
 Component side view (J79-0316-09 B/2)



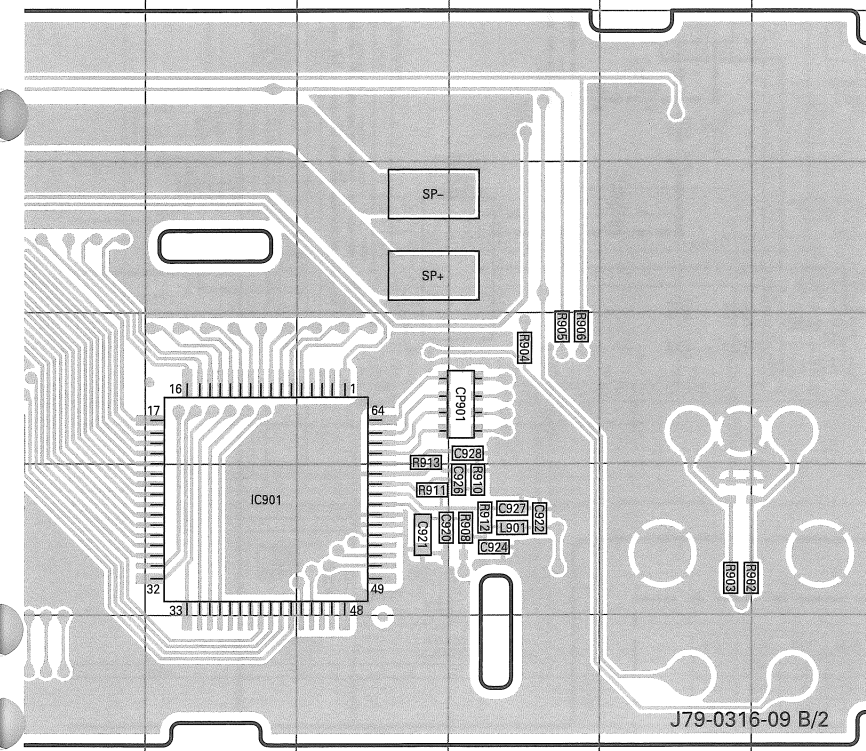
Ref. No.	Address
D903	6K
D904	6G
D905	6O
D906	4F
D907	4G
D908	4H
D909	4I
D910	4L
D911	4J



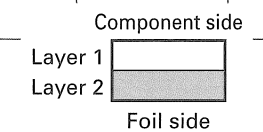
**TX-RX UNIT (X57-8130-XX) (B/2): DISPLAY SECTION**  
 -10: K -21: M2 -22: M3 -23: M4  
 Foil side view (J79-0316-09 B/2)



**TX-RX UNIT (X57-8130-XX) (B/2): DISPLAY SECTION**  
 -10: K -21: M2 -22: M3 -23: M4  
 Foil side view (J79-0316-09 B/2)

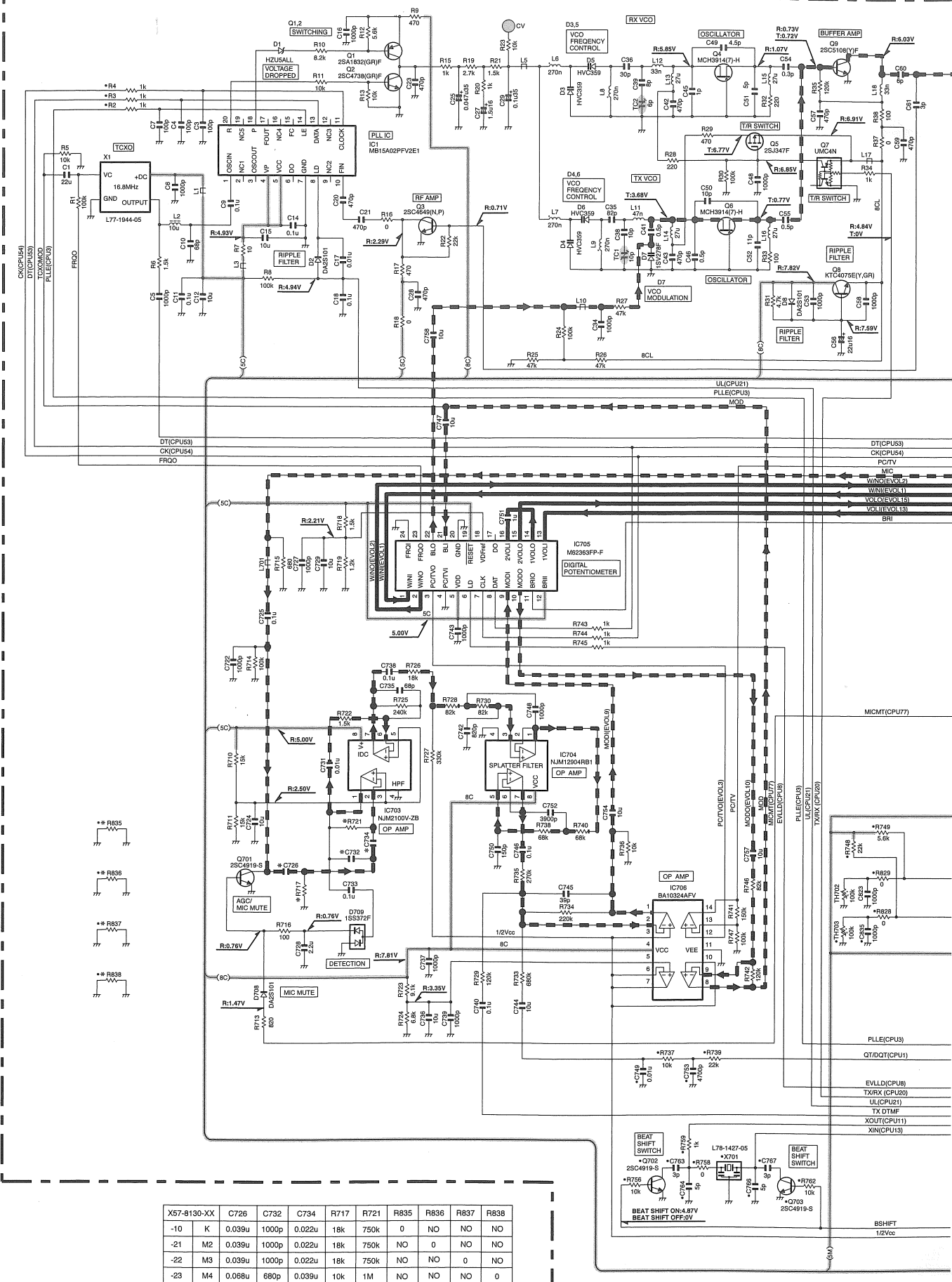


Ref. No.	Address
IC901	12K
Q901	11F
Q902	11F
Q903	11G
Q904	11F
D901	9D
D902	10D



# TM-281A SCHEMATIC DIAGRAM

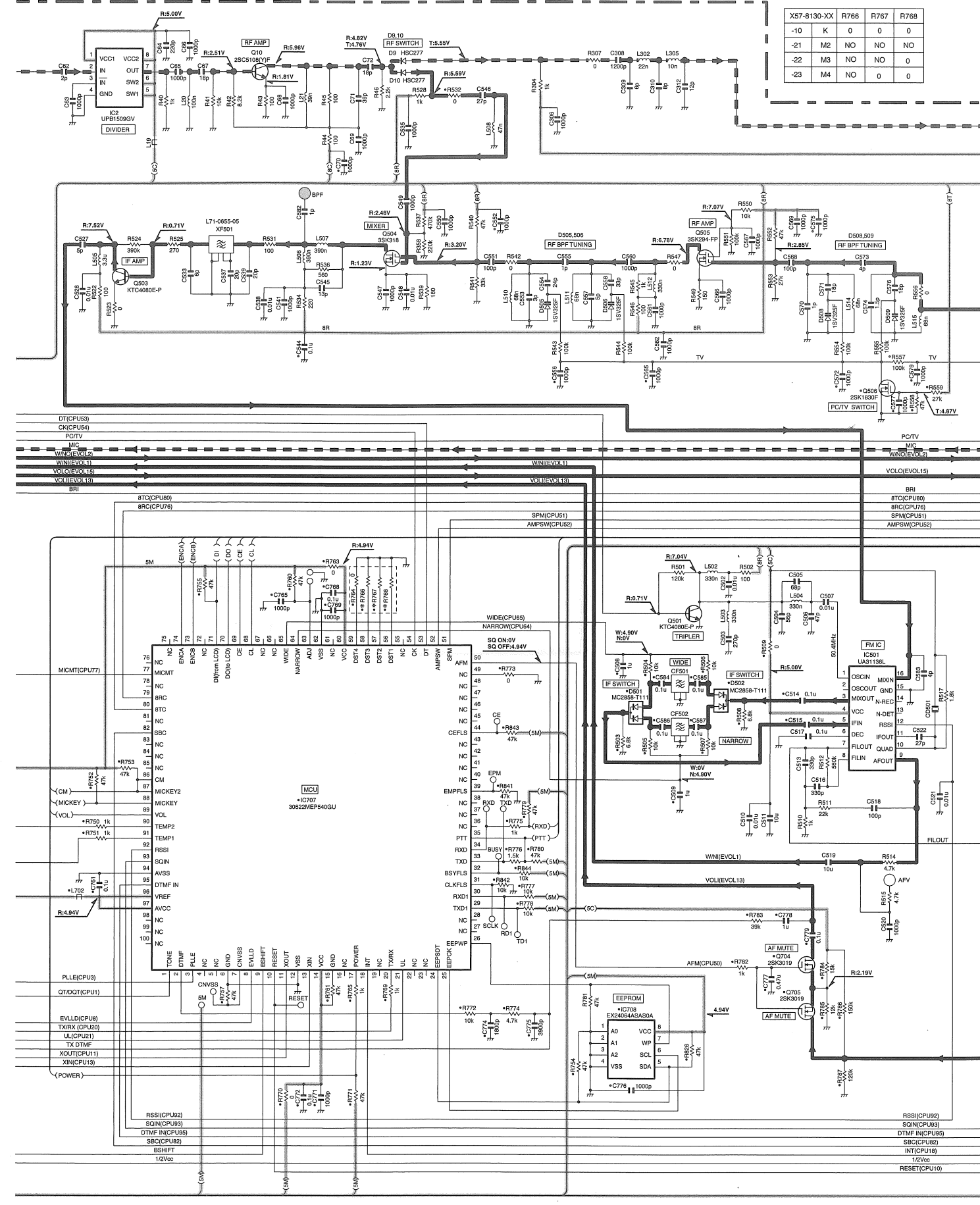
TX-RX UNIT (X57-8130-XX)(A/2) : TX-RX SECTION



X57-8130-XX	C726	C732	C734	R717	R721	R835	R836	R837	R838
-10	K	0.039u	1000p	0.022u	18k	750k	0	NO	NO
-21	M2	0.039u	1000p	0.022u	18k	750k	NO	0	NO
-22	M3	0.039u	1000p	0.022u	18k	750k	NO	NO	0
-23	M4	0.068u	880p	0.039u	10k	1M	NO	NO	0

# SCHEMATIC DIAGRAM TM-281A

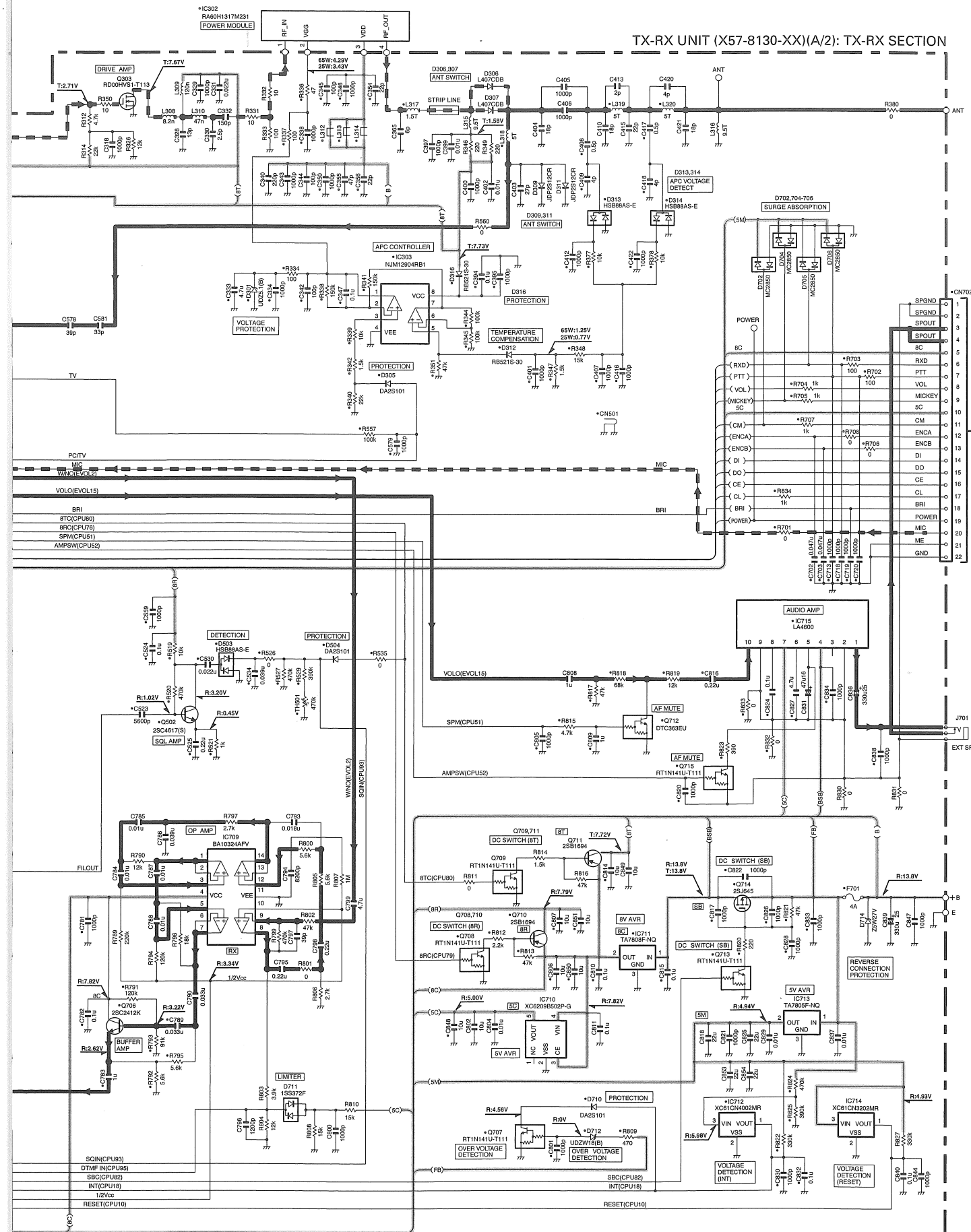
TX-RX UNIT (X57-8130-XX)(A/2): TX-RX SECTION



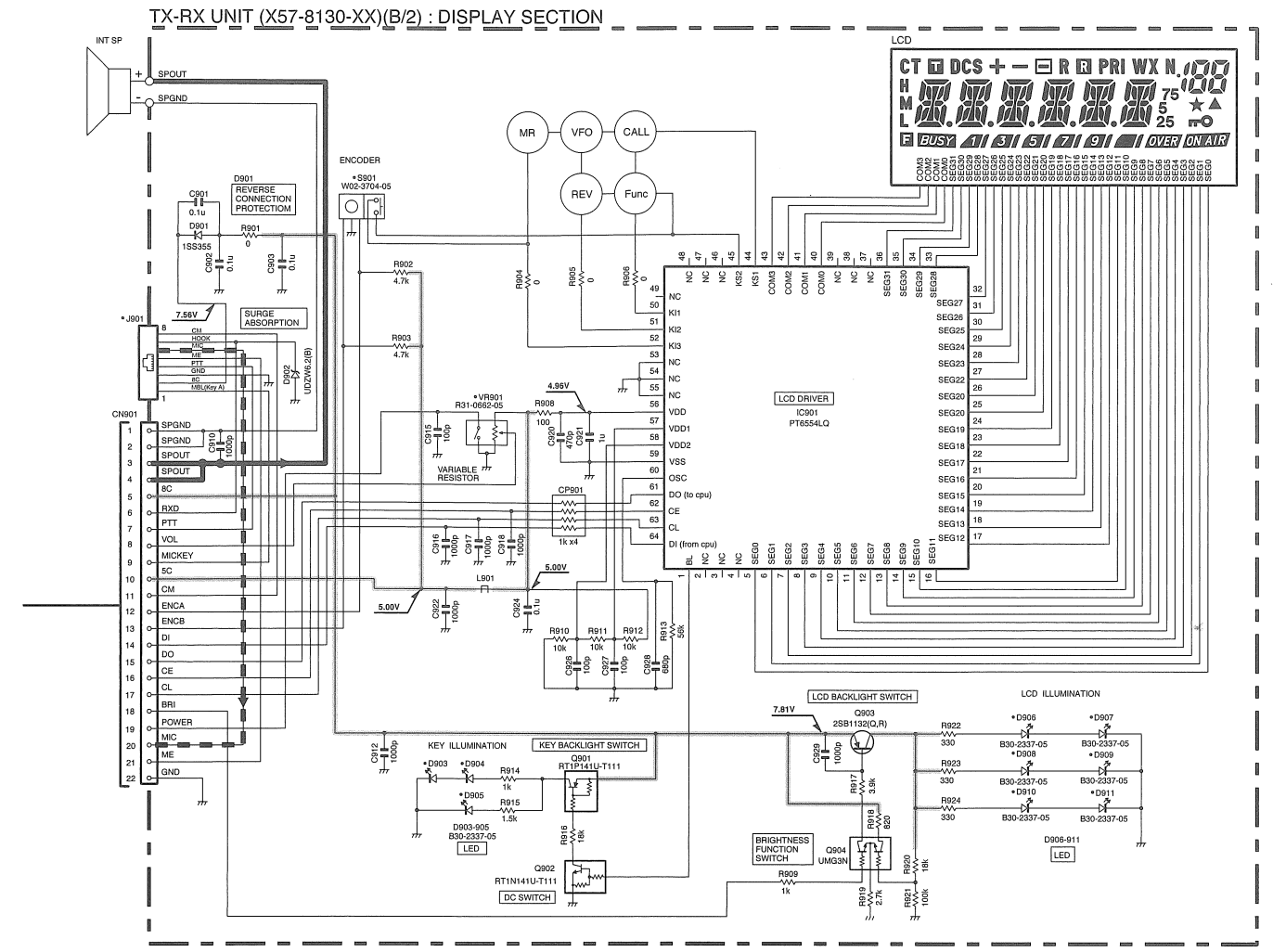
X57-8130-XX	R766	R767	R768
-10	K	0	0
-21	M2	NO	NO
-22	M3	NO	NO
-23	M4	NO	0



# TM-281A SCHEMATIC DIAGRAM



# SCHEMATIC DIAGRAM TM-281A



Note: The components marked with a dot (•) are parts of layer 1.