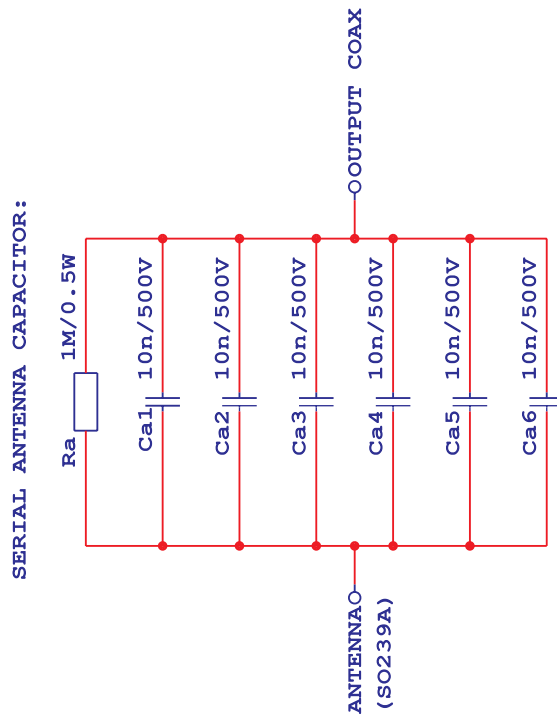
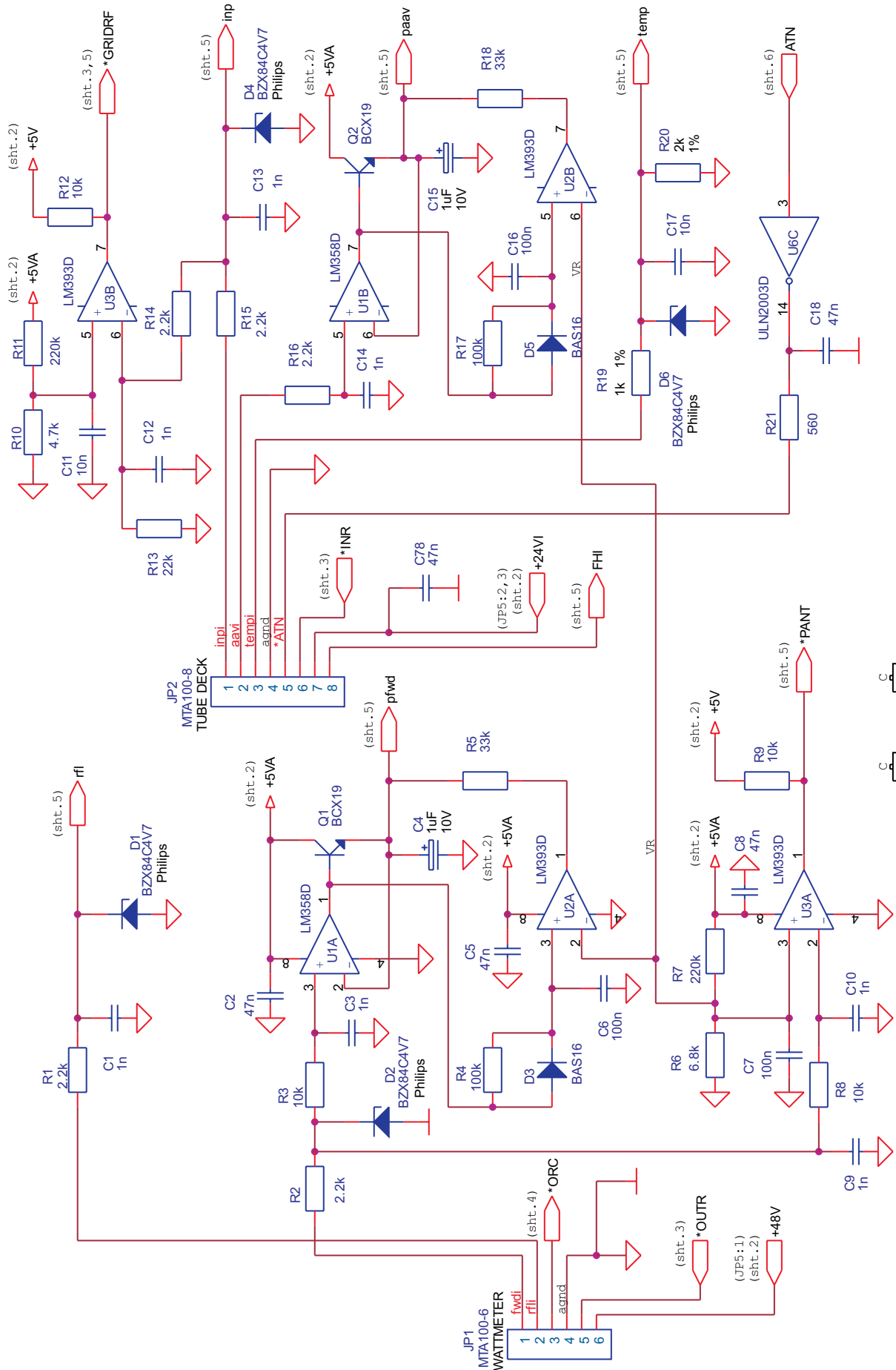


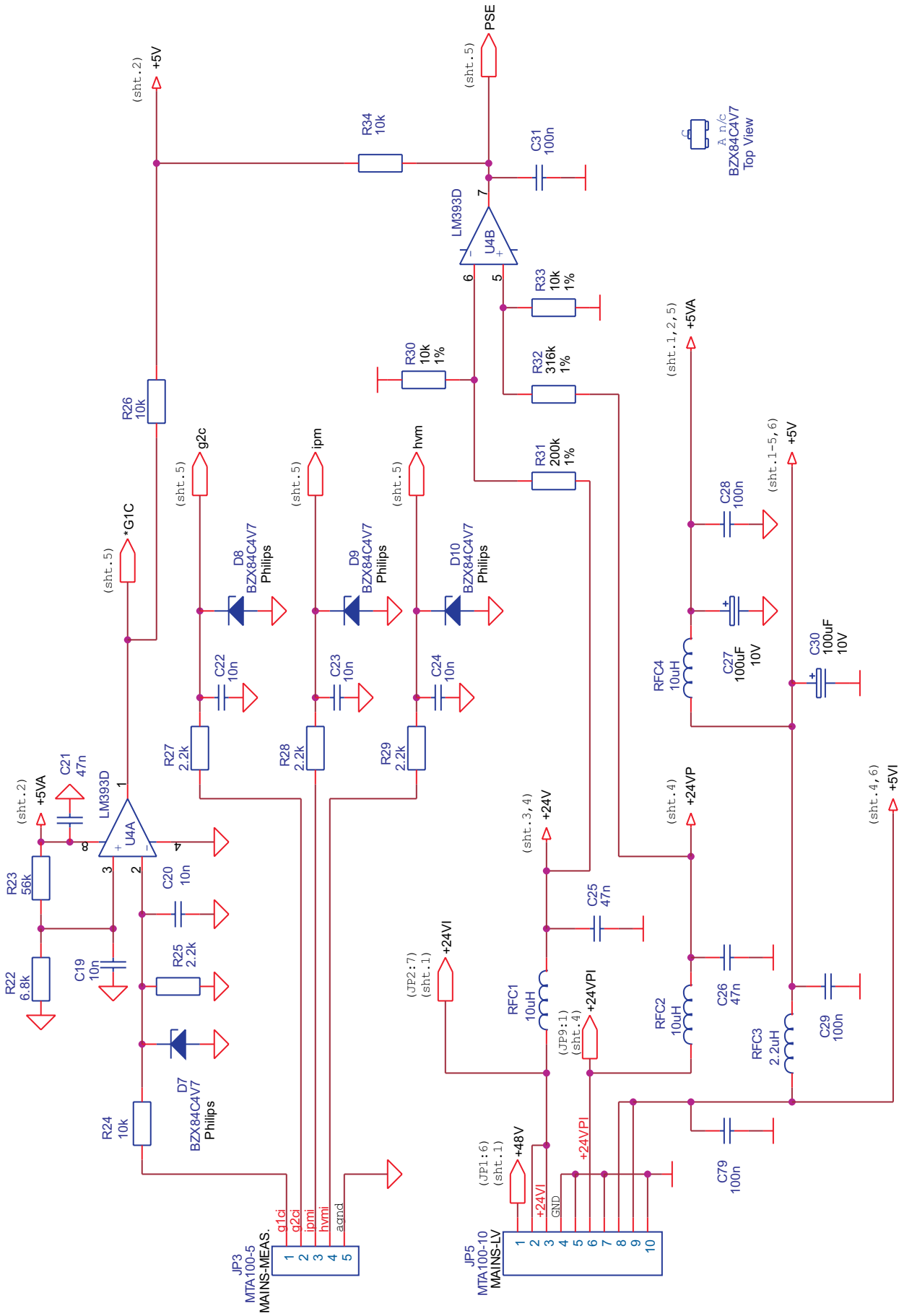
## Appendix A Schematics diagrams

Description	page
1. Antenna Capacitor. . . . .	2
2. Control. . . . .	3
3. Fan Monitor. . . . .	10
4. HV Supply. . . . .	11
5. Input. . . . .	12
6. Input-A. . . . .	13
7. Keyboard. . . . .	14
8. Mains. . . . .	15
9. On/Off Cable. . . . .	20
10. Overlay. . . . .	21
11. Temperature sensor. . . . .	22
12. Wattmeter. . . . .	23
13. Cable Harness Connections. . . . .	24

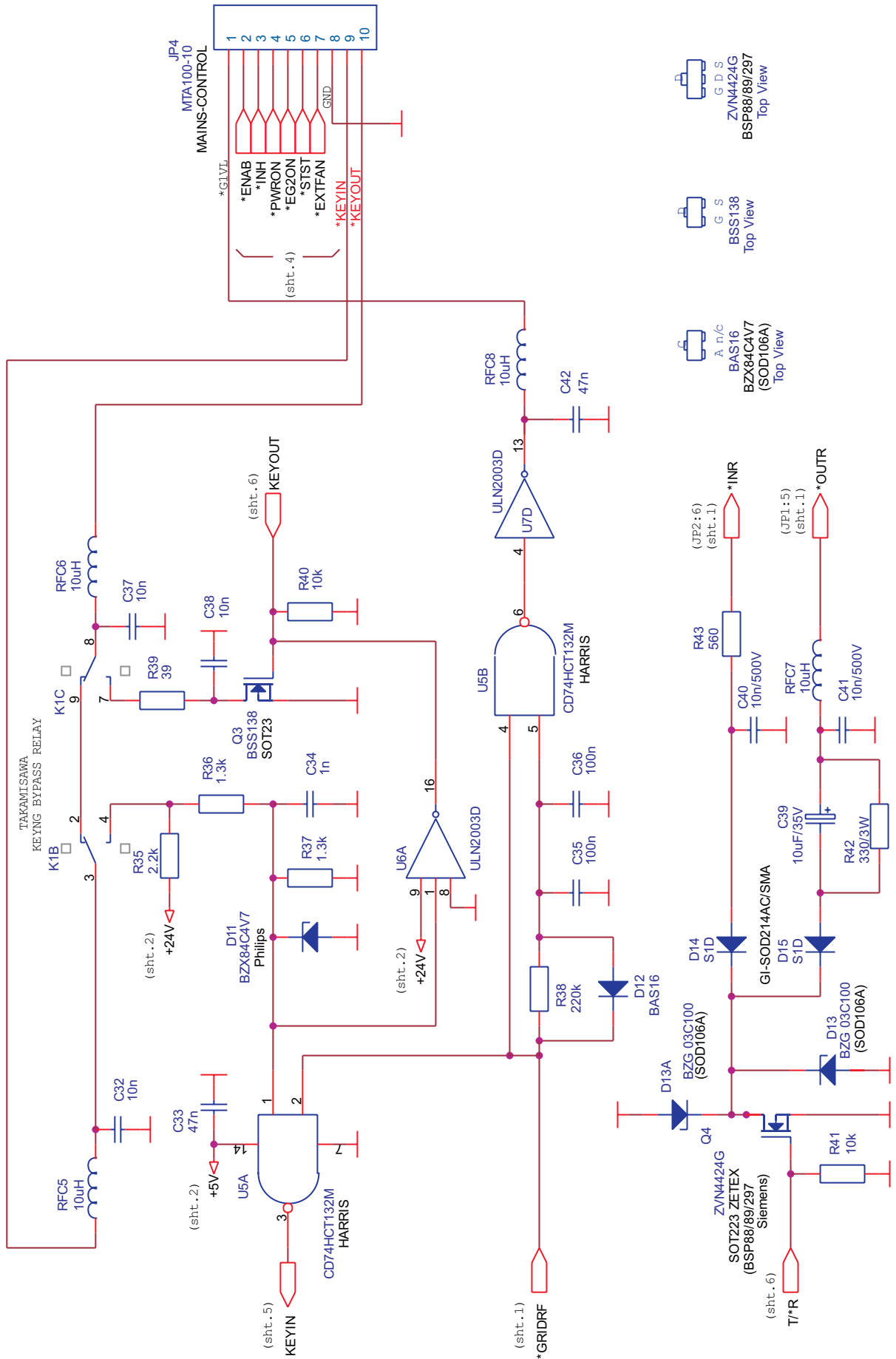








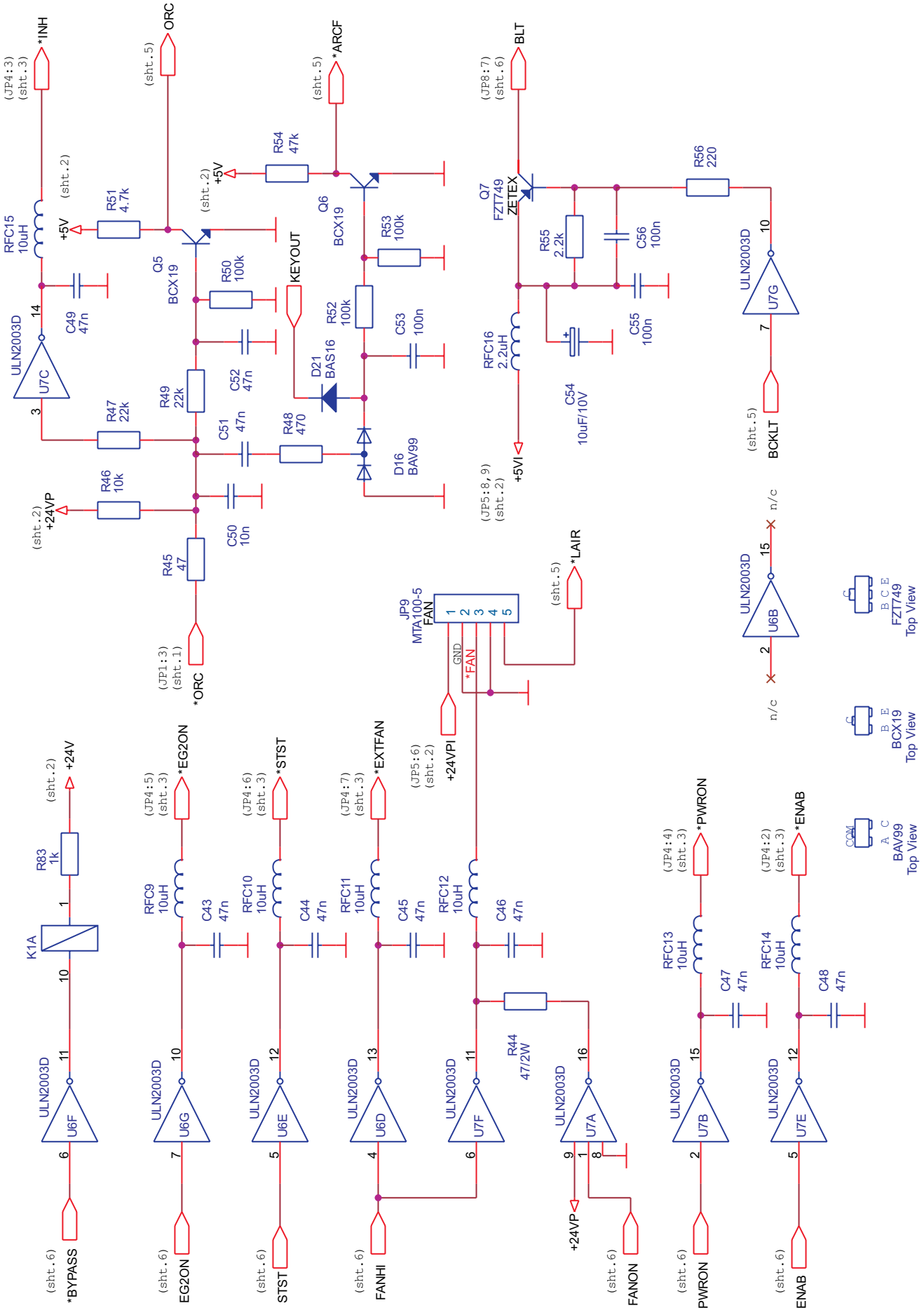
**CONTROL**  
Schematic diagram Sht.2 of 7



ZVN4424G  
G D S  
BSP88/89/297  
Top View

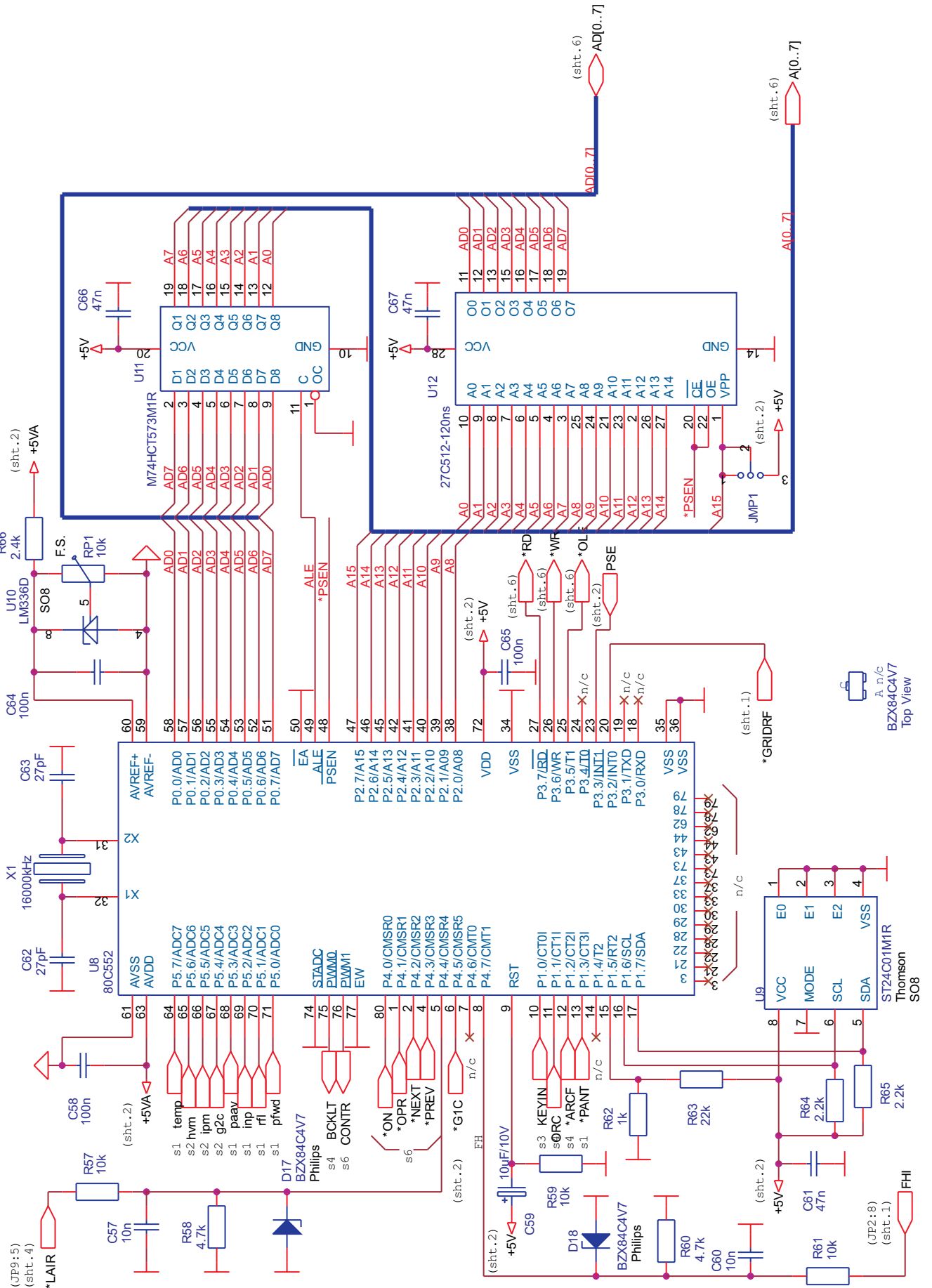
BSS138  
G S  
Top View

BAS16  
A, n/c  
BZX84CAV7  
(SOD106A)  
Top View

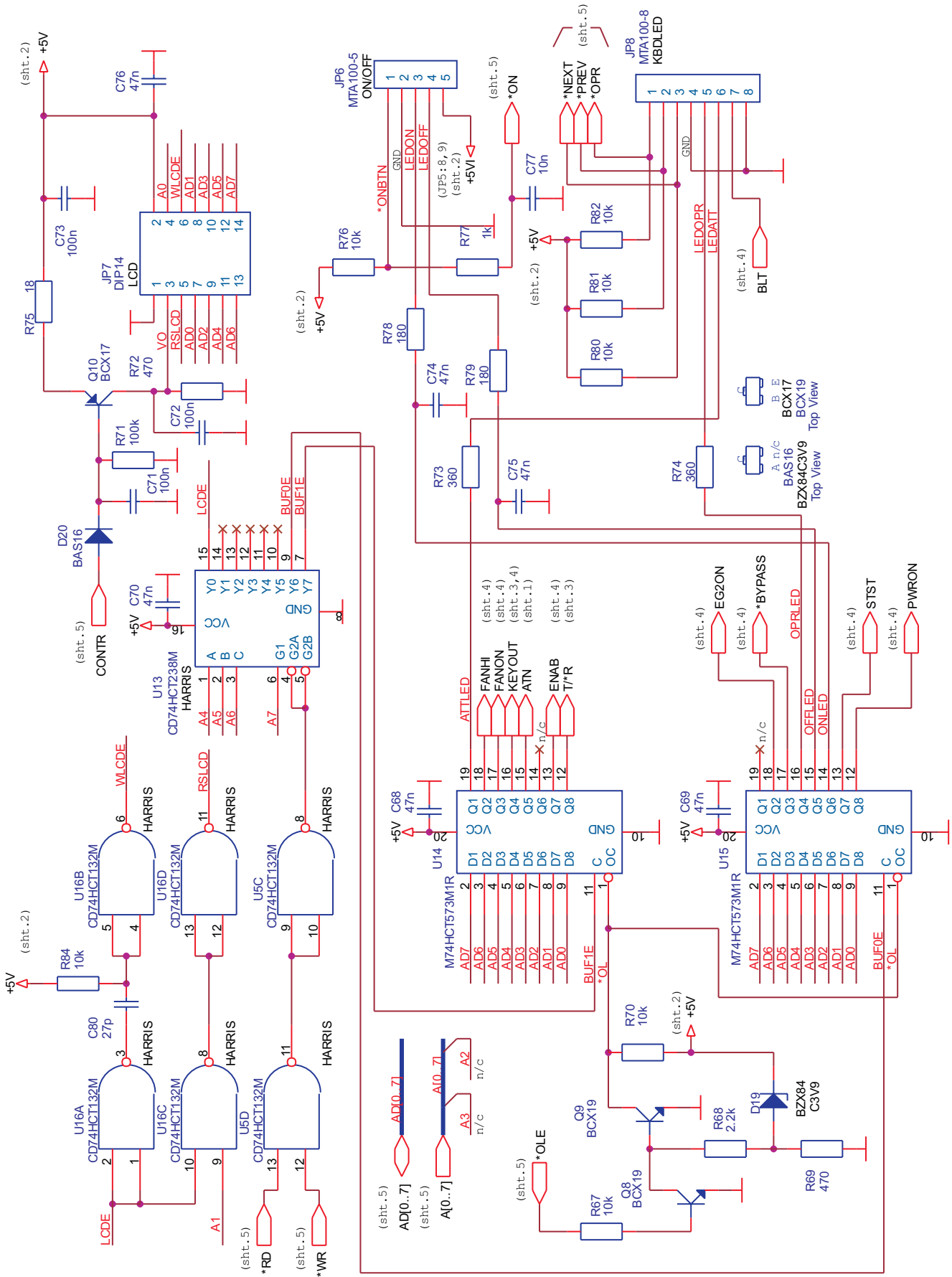


**CONTROL**  
Schematic diagram Sht. 4 of 7



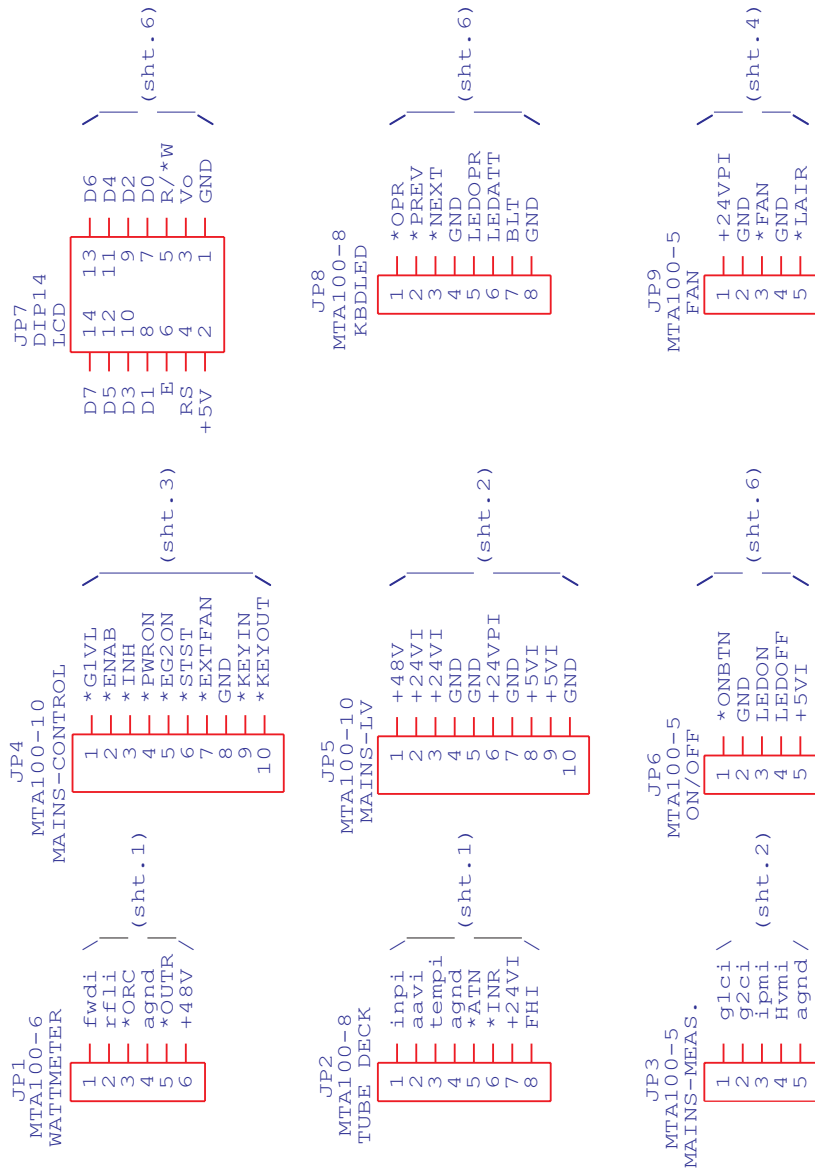


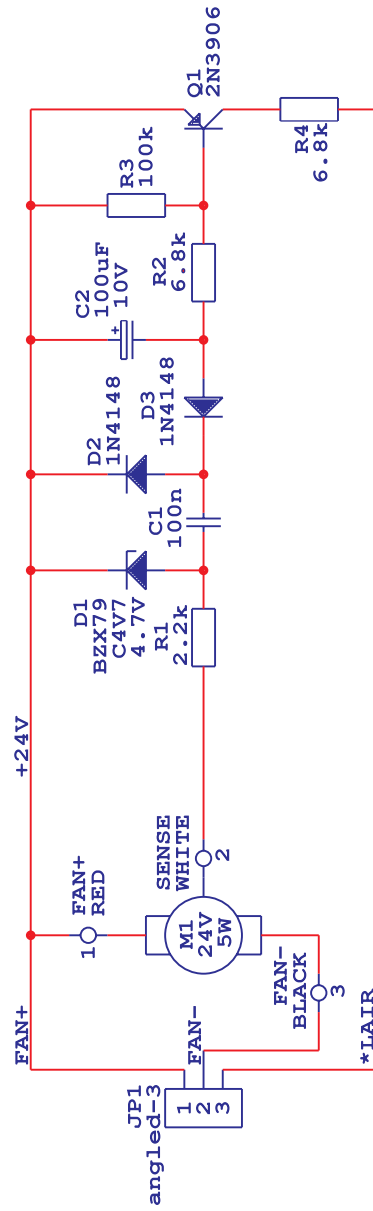
BZX84C4V7  
Top View



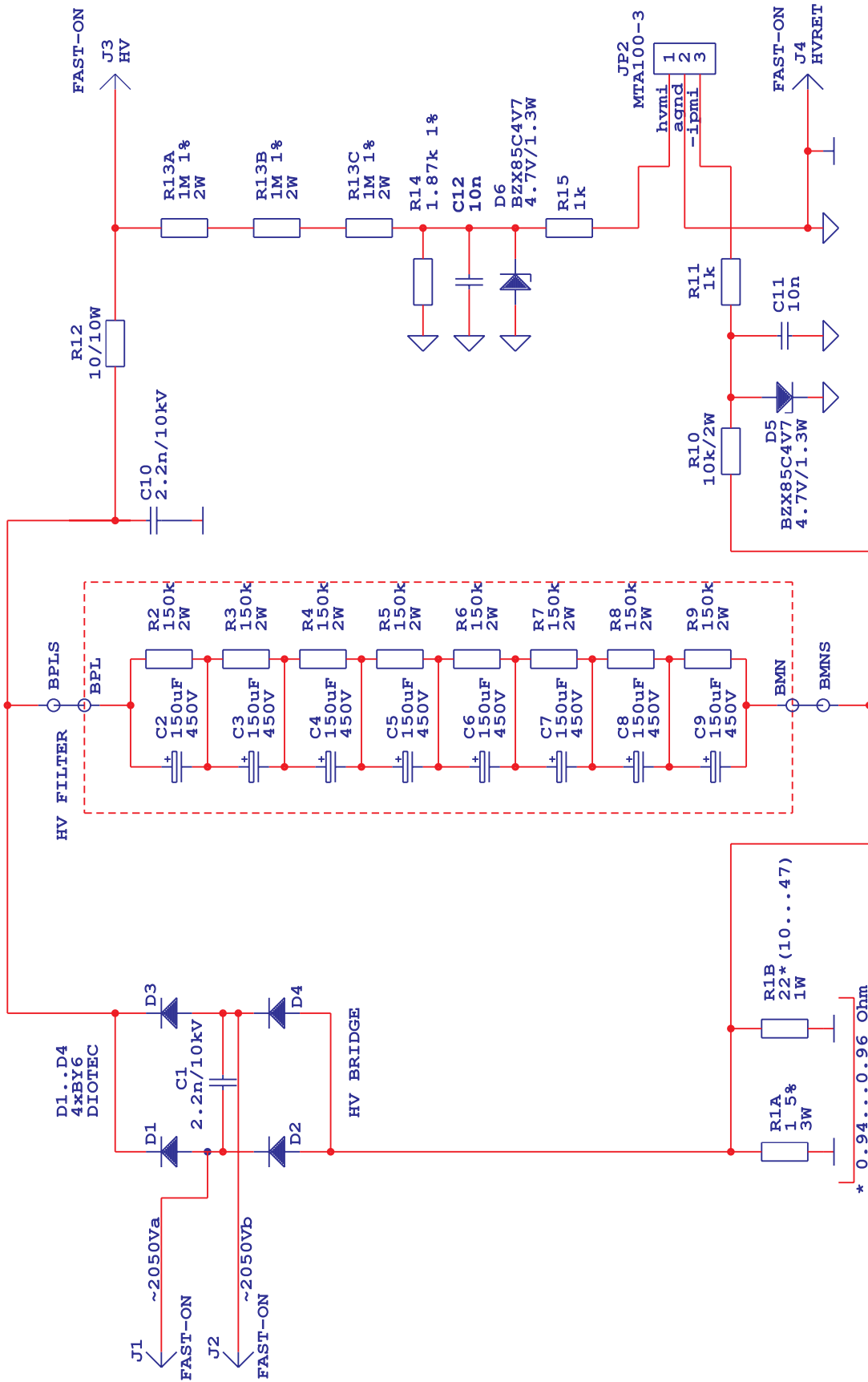
**CONTROL**  
Schematic diagram Sht. 6 of 7

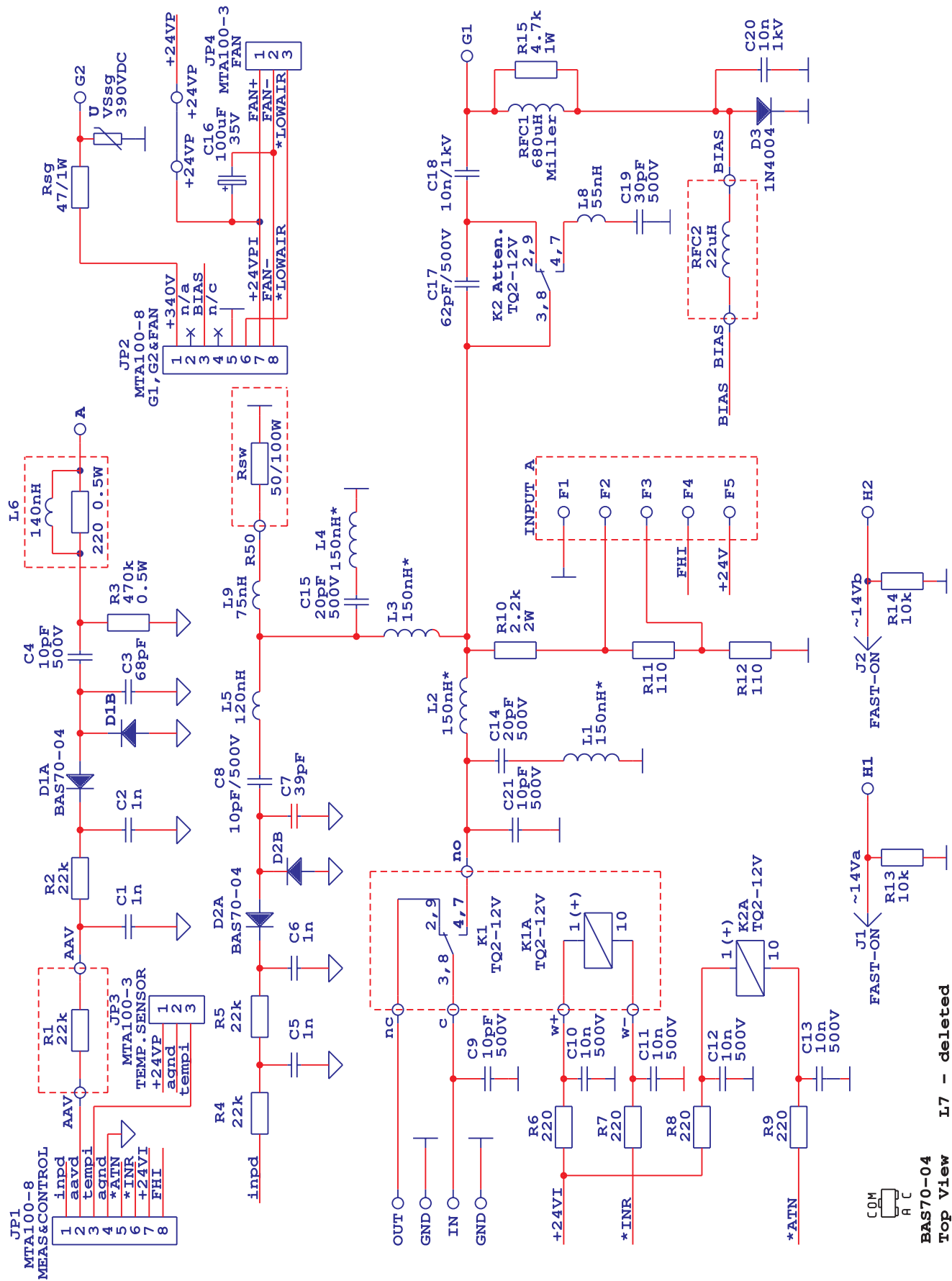






FAN MONITOR  
Schematic diagram Sht. 1 of 1



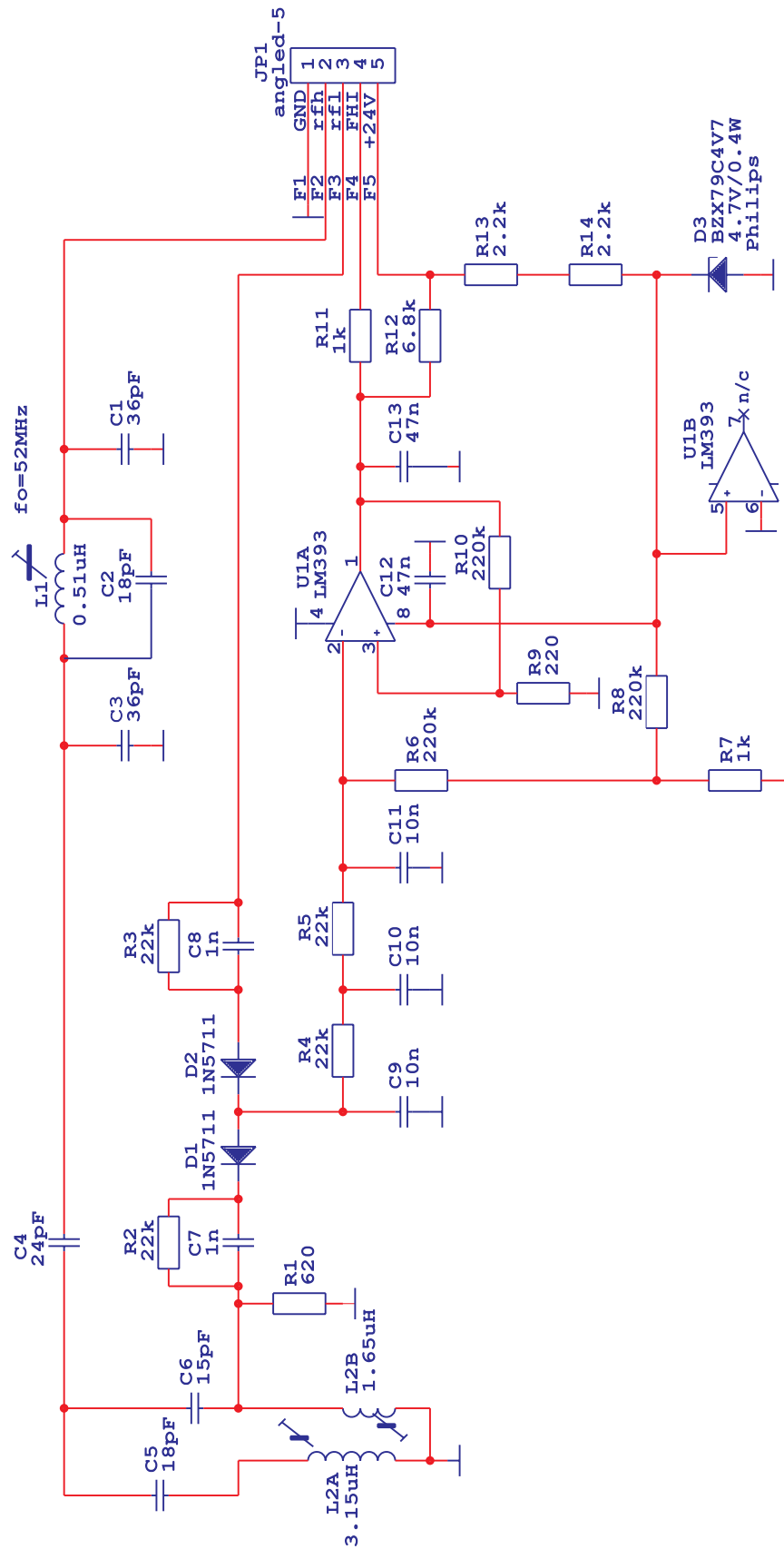


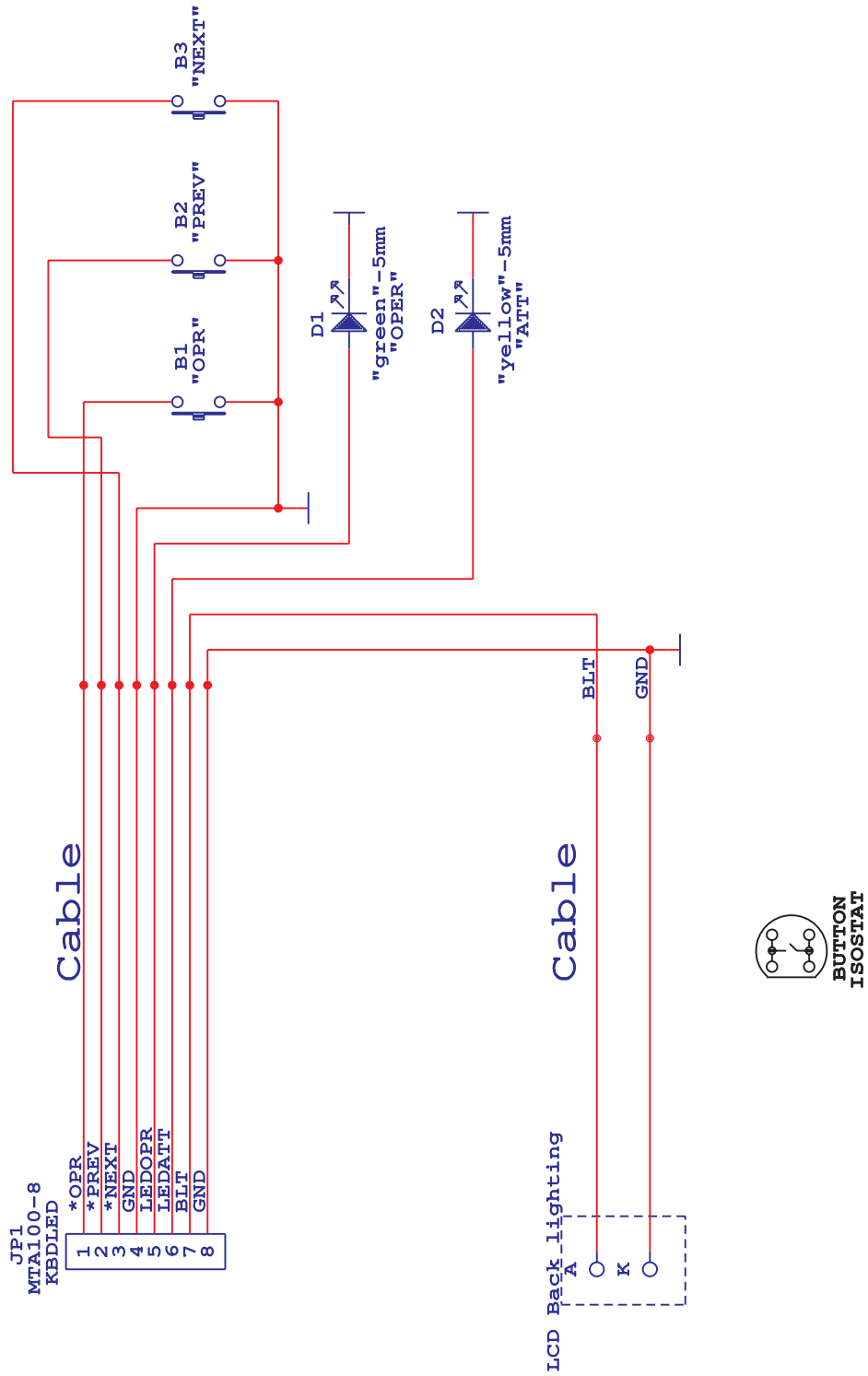
COM  
R C

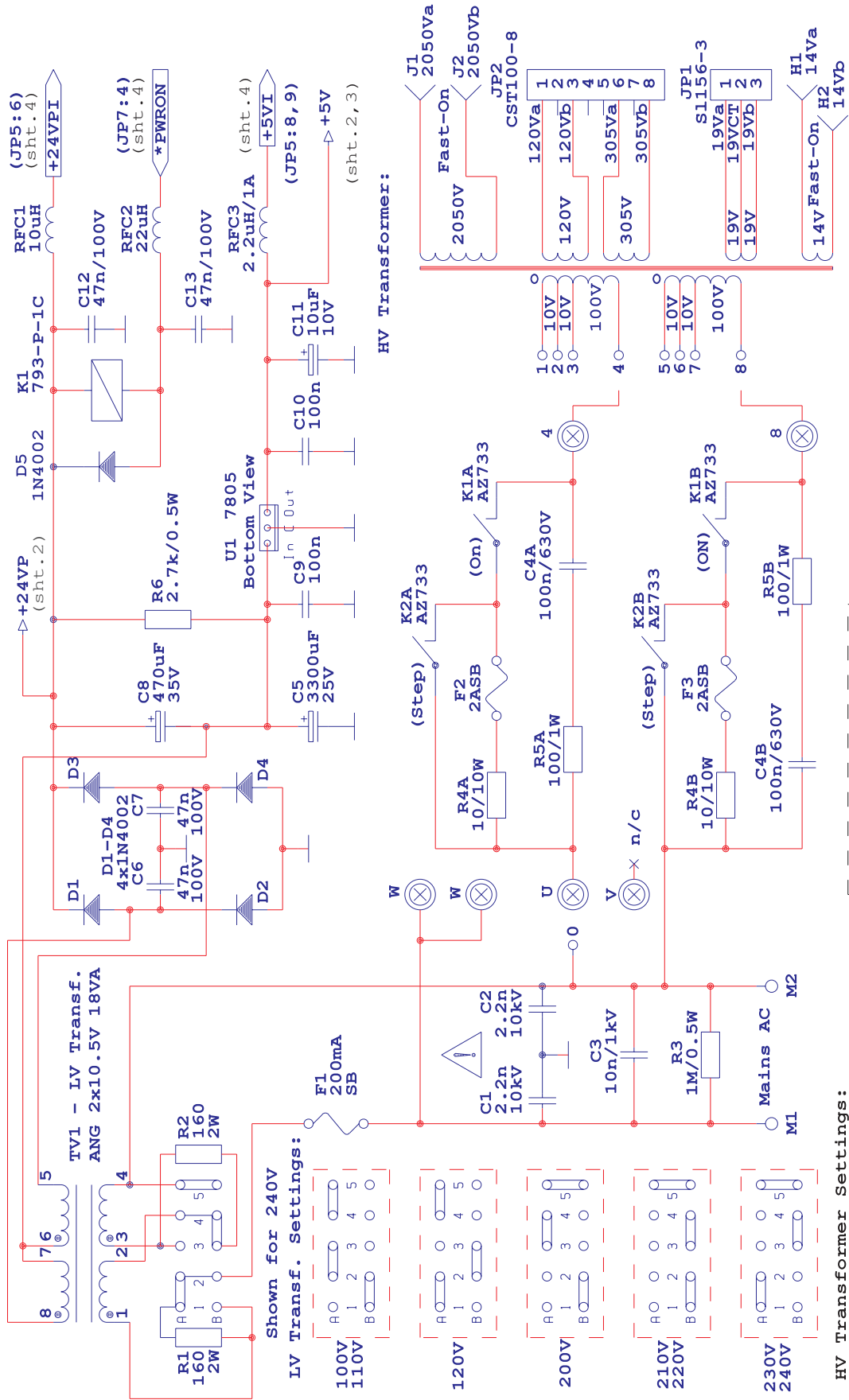
BAS70-04  
Top View

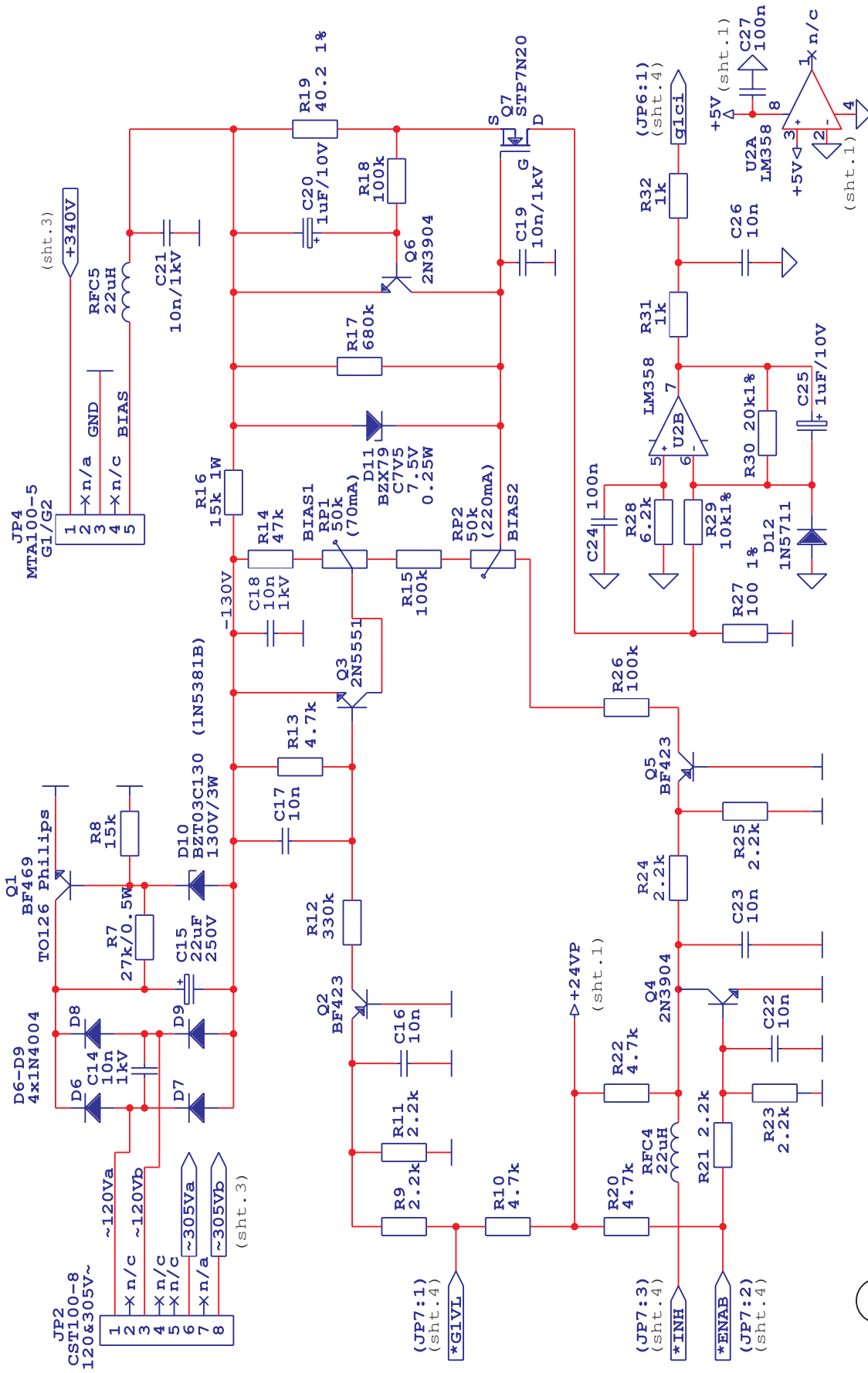
I7 - deleted

INPUT  
Schematic diagram Sht. 1 of 1



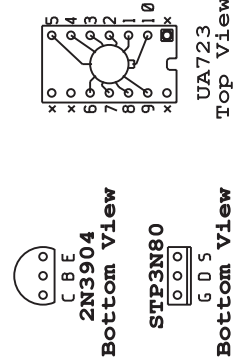
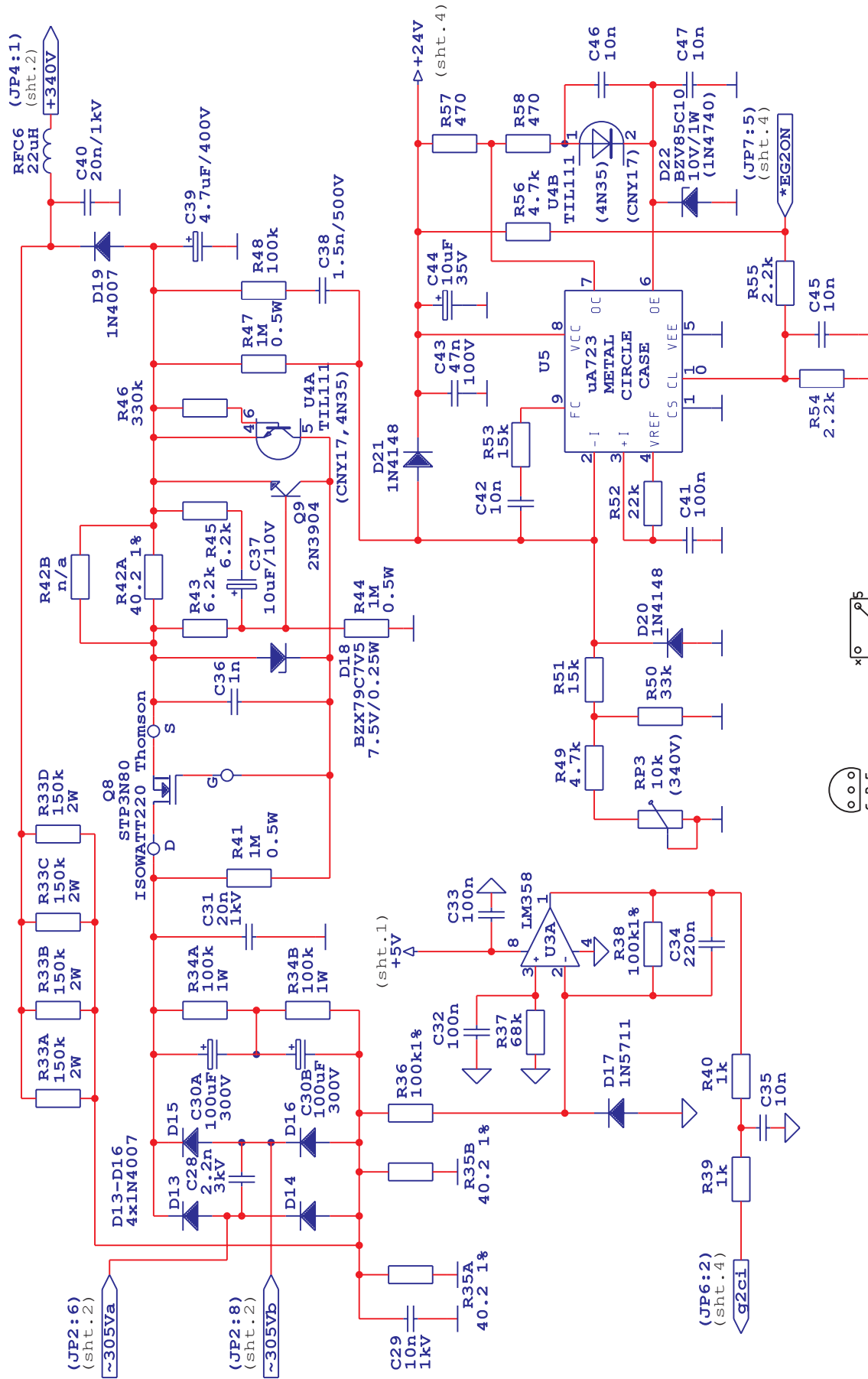


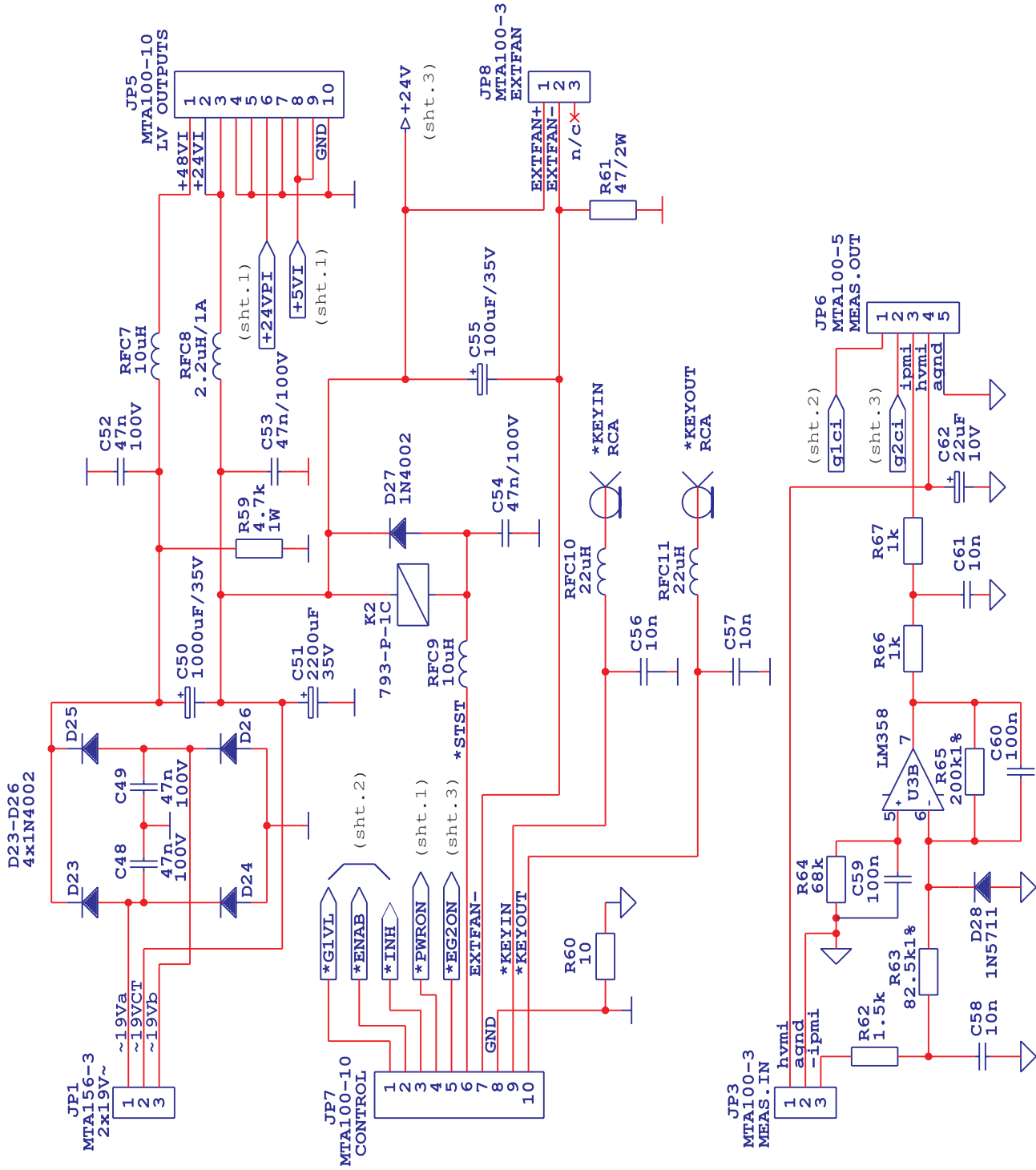




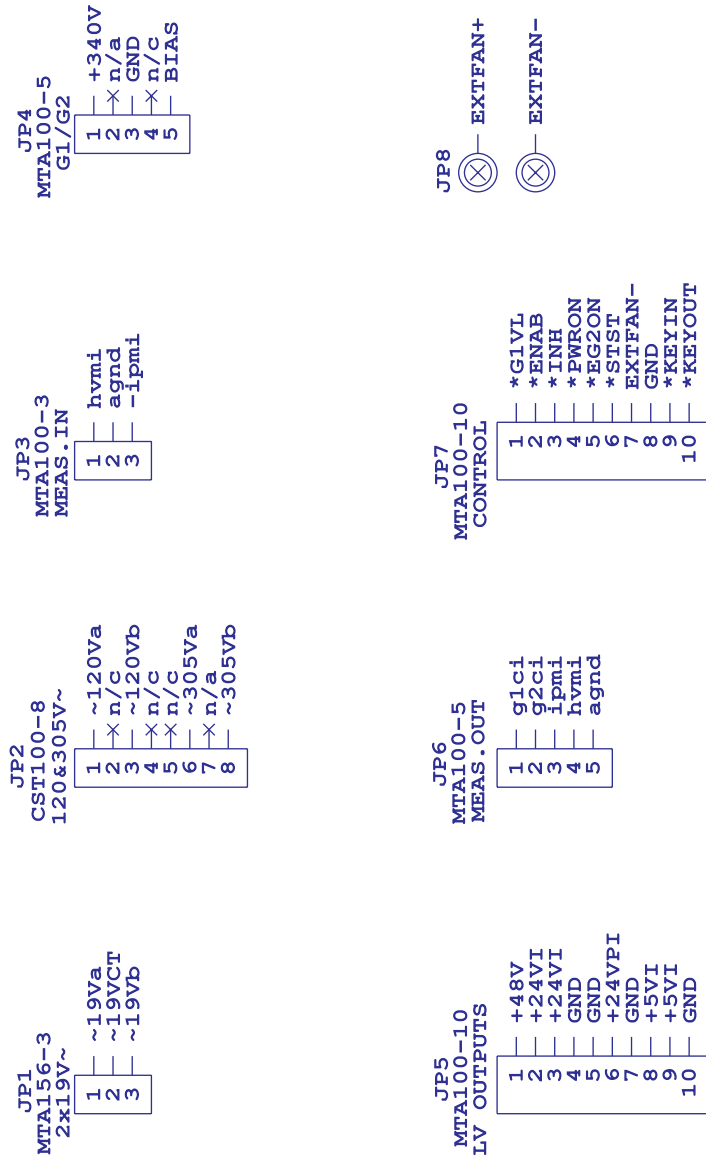
MAINS  
Schematic diagram Sht. 2 of 5

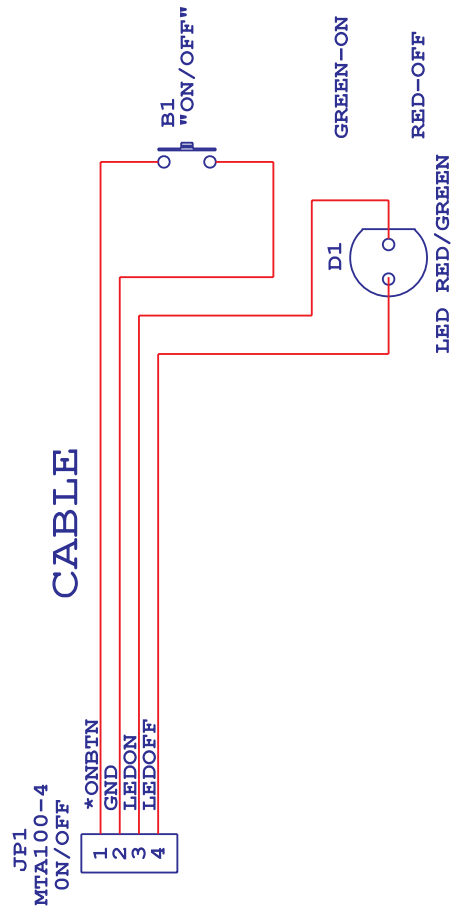


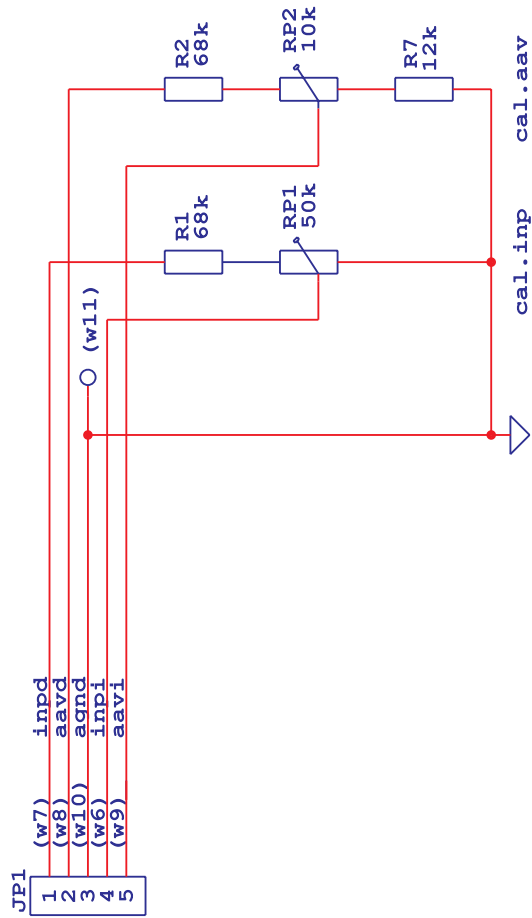
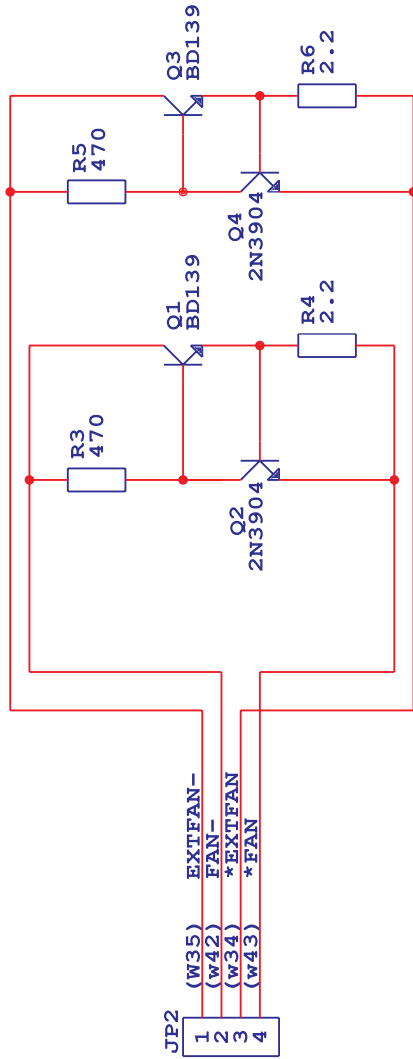


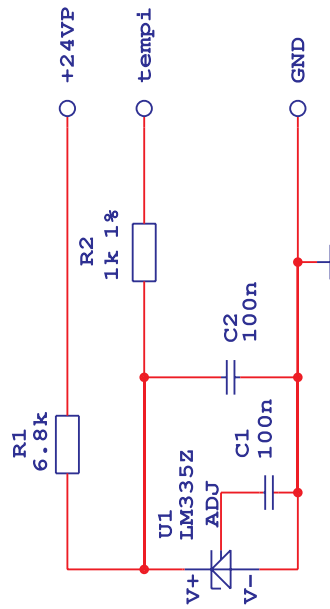


**MAINS**  
Schematic diagram Sht. 4 of 5







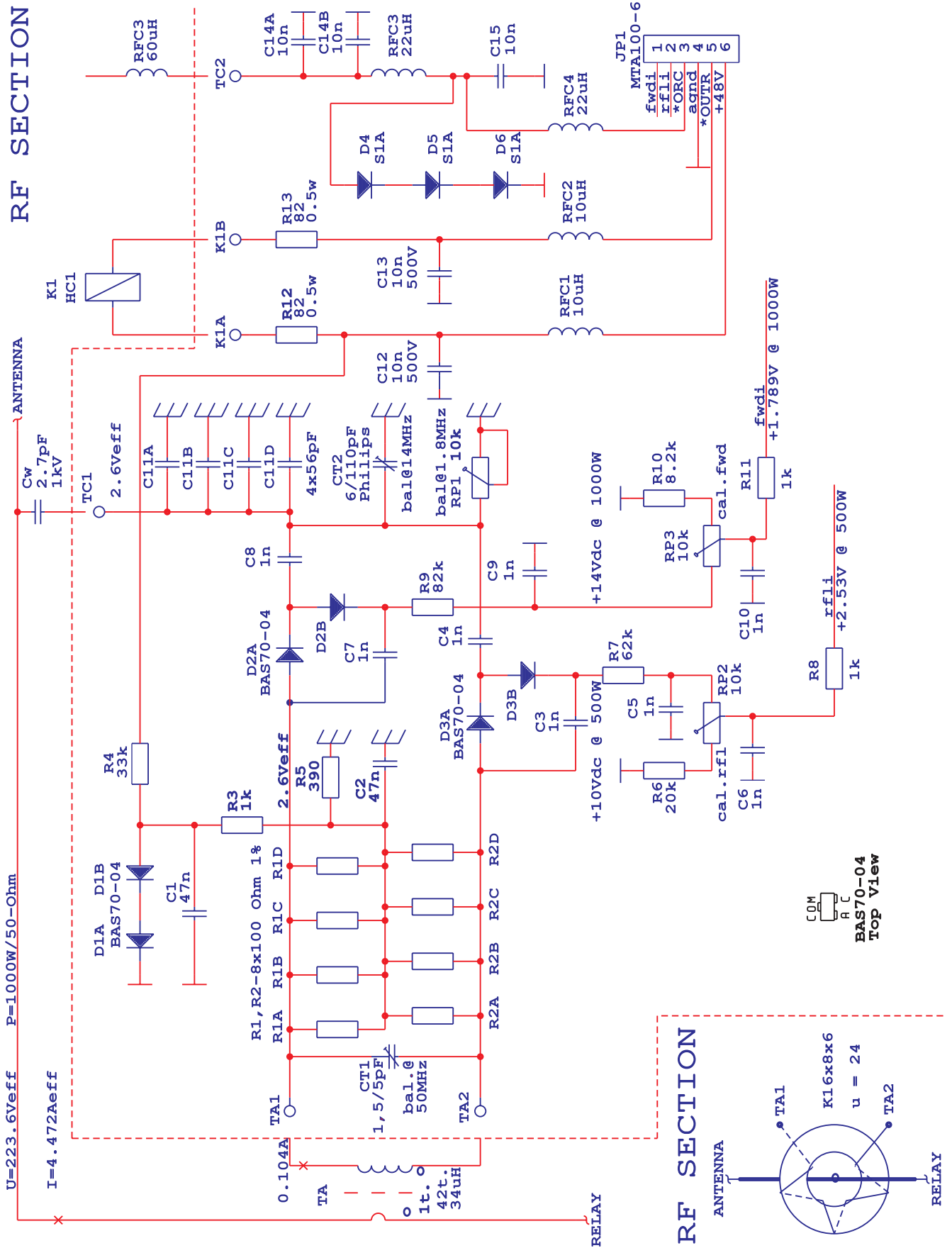


LM335Z



V - V + ADJ

Bottom View



WATTMETER  
Schematic diagram Sht. 1 of 1

**ACOM1000 Cable Harness Connections**

from PCB Conn.:pin	Wire Nr.	to PCB Conn:pin	Sig.name
CONTROL (C2) JP2:1	6	OVERLAY JP1:4	- inpi
MTA100-8 :2	9	OVERLAY JP1:5	- aavi
:3	12	INPUT JP1:3	- tempi
:4	10	OVERLAY JP1:3	- agnd
:5	13	INPUT JP1:5	- *ATN
:6	14	INPUT JP1:6	- *INR
:7	15	INPUT JP1:7	- +24VI
:8	16	INPUT JP1:8	- FHI
CONTROL (C3) JP3:1	1	MAINS JP6:1	- glci
MTA100-5 :2	2	MAINS JP6:2	- g2ci
:3	3	MAINS JP6:3	- ipmi
:4	4	MAINS JP6:4	- hvmi
:5	5	MAINS JP6:5	- agnd
CONTROL (C4) JP4:1	27	MAINS JP7:1	- *G1VL
MTA100-10 :2	28	MAINS JP7:2	- *ENAB
:3	29	MAINS JP7:3	- *INH
:4	31	SW -b-	- *PWRON
:5	32	MAINS JP7:5	- *EG2ON
:6	33	MAINS JP7:6	- *STST
:7	34	OVERLAY JP2:3	- *EXTFAN
:8	36	MAINS JP7:8	- GND
:9	37	MAINS JP7:9	- *KEYIN
:10	38	MAINS JP7:10	- *KEYOUT
CONTROL (C5) JP5:1	17	MAINS JP5:1	- +48V
MTA100-10 :2	18	MAINS JP5:2	- +24VI
:3	19	MAINS JP5:3	- +24VI
:4	20	MAINS JP5:4	- GND
:5	21	MAINS JP5:5	- GND
:6	22	MAINS JP5:6	- +24VPI
:7	23	MAINS JP5:7	- GND
:8	24	MAINS JP5:8	- +5VI
:9	25	MAINS JP5:9	- +5VI
:10	26	MAINS JP5:10	- GND
CONTROL (C9) JP9:1	39	DET/TD JP2:7	- +24VPI
MTA100-5 :2	-		
:3	43	OVERLAY JP2:4	- *FAN
:4	-		
:5	44	DET/TD JP2:6	- *LOWAIR
MAINS (M4) JP4:1	45	DET/TD JP2:1	- +340V
MTA100-5 :2	-		
:3	40	DET/TD JP2:5	- GND
:4	-		
:5	41	DET/TD JP2:3	- BIAS
MAINS PCB (M5) JP5:1	17	CONTROL JP5:1	- +48V
MTA100-10 :2	18	CONTROL JP5:2	- +24VI
:3	19	CONTROL JP5:3	- +24VI
:4	20	CONTROL JP5:4	- GND
:5	21	CONTROL JP5:5	- GND
:6	22	CONTROL JP5:6	- +24VPI
:7	23	CONTROL JP5:7	- GND
:8	24	CONTROL JP5:8	- +5VI
:9	25	CONTROL JP5:9	- +5VI
:10	26	CONTROL JP5:10	- GND

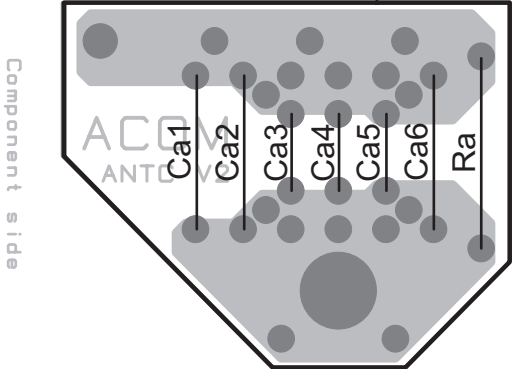


PCB	Connector:pin	Wire Nr.	to PCB Conn:pin	Sig.name
MAINS PCB (M6) MTA100-5	JP6:1	1	CONTROL JP3:1	- g1ci
	:2	2	CONTROL JP3:2	- g2ci
	:3	3	CONTROL JP3:3	- ipmi
	:4	4	CONTROL JP3:4	- hvmi
	:5	5	CONTROL JP3:5	- agnd
MAINS PCB (M7) MTA100-10	JP7:1	27 C	ONTROL JP4:1	- *G1VL
	:2	28	CONTROL JP4:2	- *ENAB
	:3	29	CONTROL JP4:3	- *INH
	:4	30	SW -a-	- *PWRON
	:5	32	CONTROL JP4:5	- *EG2ON
	:6	33	CONTROL JP4:6	- *STST
	:7	35	OVERLAY JP2:1	- EXTFAN-
	:8	36	CONTROL JP4:8	- GND
	:9	37	CONTROL JP4:9	- *KEYIN
	:10	38	CONTROLJP4:10	- *KEYOUT
-----				
INPUT-TD (T1) MTA100-8	JP1:1	7	OVERLAY JP1:1	- inpd
	:2	8	OVERLAY JP1:2	- aavd
	:3	12	CONTROL JP2:3	- tempi
	:4	11	OVERLAY iðið.	- agnd
	:5	13	CONTROL JP2:5	- *ATN
	:6	14	CONTROL JP2:6	- *INR
	:7	15	CONTROL JP2:7	- +24VI
	:8	16	CONTROL JP2:8	- FHI
DET-TD (T2) MTA100-8	JP2:1	45	MAINS JP4:1	- +340V
	:2	-		
	:3	41	MAINS JP4:5	- BIAS
	:4	-		
	:5	40	MAINS JP4:3	- GND
	:6	44	CONTROL JP9:5	- *LOWAIR
	:7	39	CONTROL JP9:1	- +24VPI
	:8	42	OVERLAY JP2:2	- FAN-
DET-TD (T3) (FAST-ON)	J1	46	HV TR. HTR/9	- ~14Va
	J2	47	HV TR. HTR/10	- ~14Vb
-----				
HV Transf. (HT) (FAST-ON)	HTR1	46	DET/TD J1	- ~14Va
	HTR2	47	DET/TD J2	- ~14Vb
-----				
OVERLAY (O2)	JP2:1	35	MAINS JP7:7	- EXTFAN-
	:2	42	DET/TD JP2:8	- FAN-
	:3	34	CONTROL JP4:7	- *EXTFAN
	:4	43	CONTROL JP9:3	- *FAN
(O1)	JP1:1	7	INPUT JP1:1	- inpd
	:2	8	INPUT JP1:2	- aavd
	:3	10	CONTROL JP2:4	- agnd
	:3a	11	INPUT JP1:4	- agnd
	:4	6	CONTROL JP2:1	- inpi
	:5	9	CONTROL JP2:2	- aavi
-----				
Micro-switch (SW)	SWa	30	CONTROL JP4:4	- *PWRON
	SWb	31	MAINS JP7:4	- *PWRON

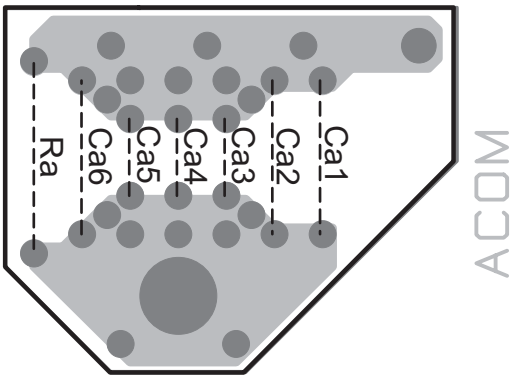
## Appendix B

## Appendix B PCB Layouts

Description	page
1. Antenna Capacitor. . . . .	2
2. Control. . . . .	4
3. Fan Monitor. . . . .	6
4. HV Bridge. . . . .	8
5. HV Filter. . . . .	10
6. Input. . . . .	12
7. Input-A. . . . .	14
8. Keyboard. . . . .	16
9. Mains. . . . .	18
10. Overlay. . . . .	20
11. Temperature sensor. . . . .	22
12. Wattmeter. . . . .	24

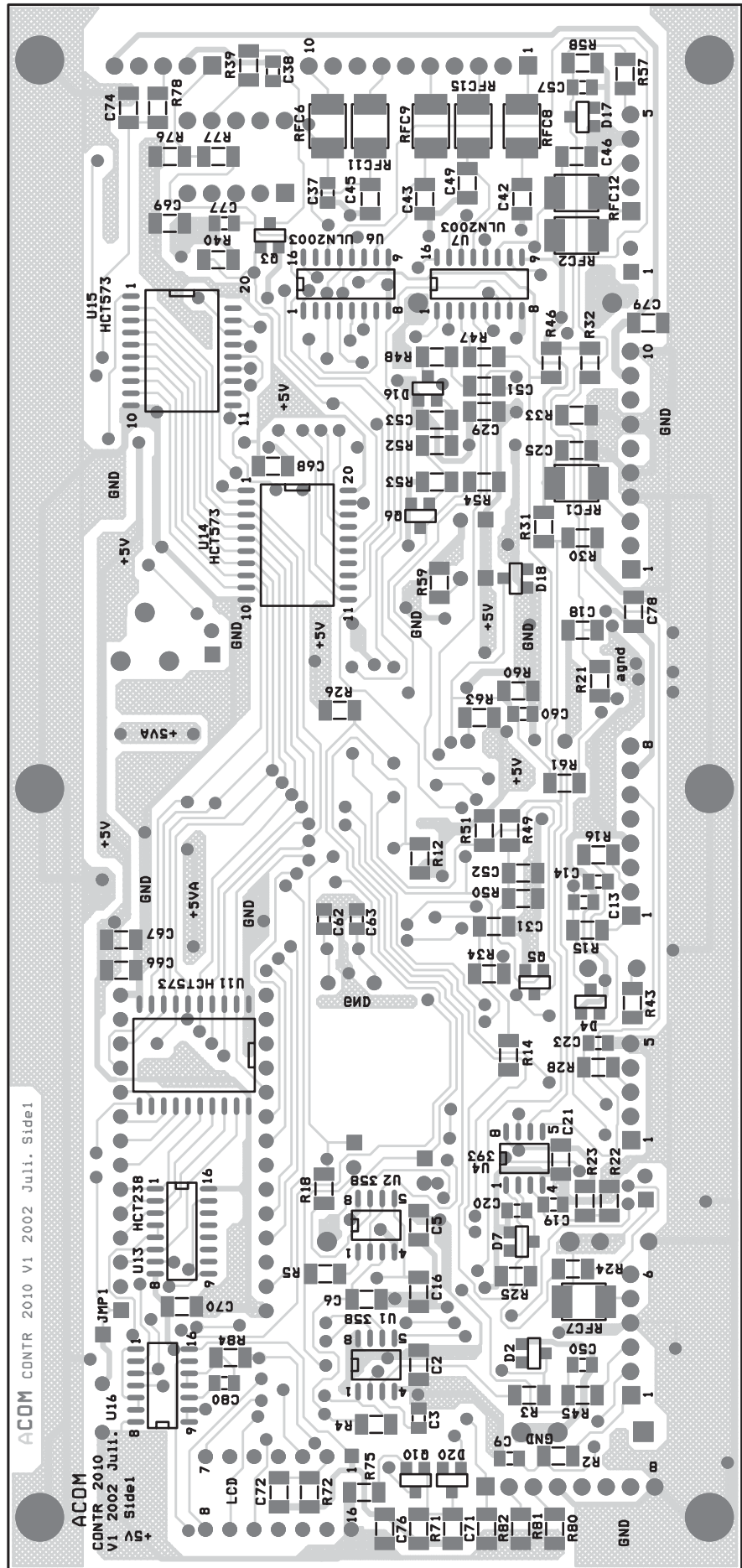


**ANTENNA CAPACITOR**  
**Component side**



**ANTENNA CAPACITOR**  
**Solder side**

Appendix B



ACOM CONTR 2010 V1 2002 Juli. Side1

ACOM

CONTR 2010

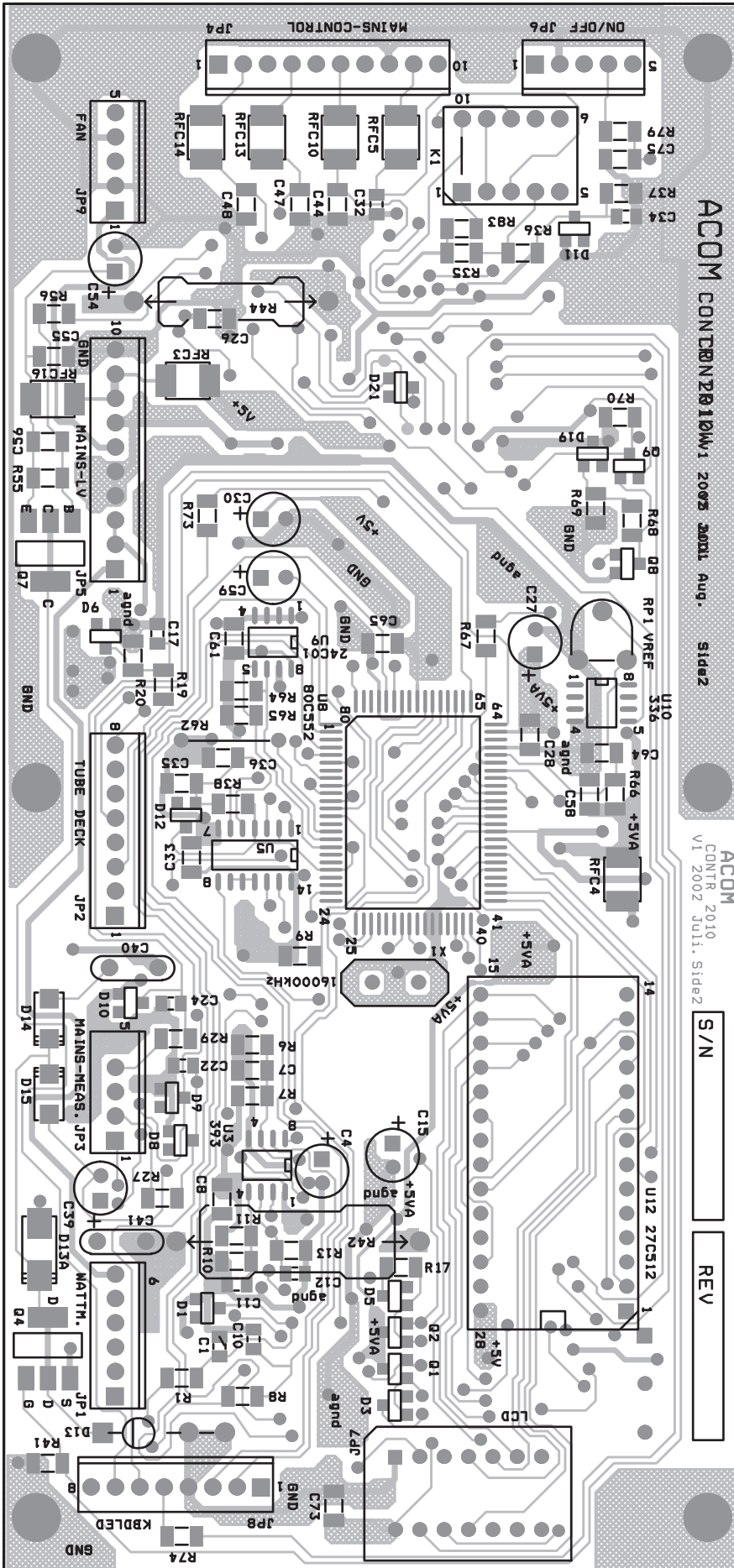
V1 2002 Juli.

U16

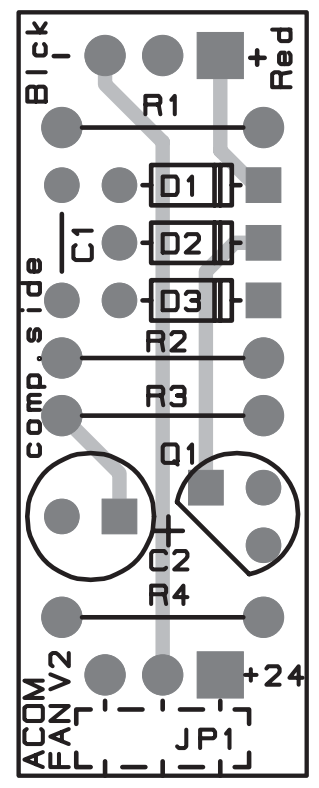
Side1

ACOM CONTR 2010 V1 2002 Juli.  
Top Layer

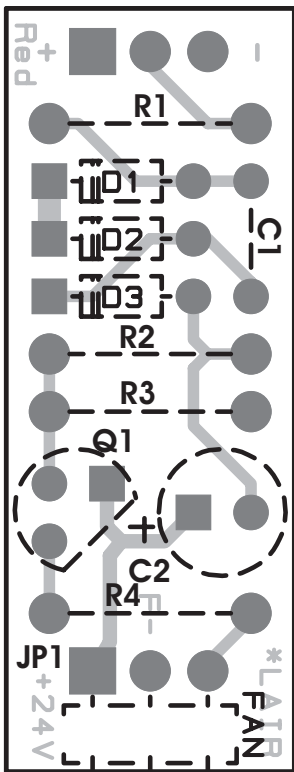
**CONTROL**  
Component side



CONTROL  
Solder side

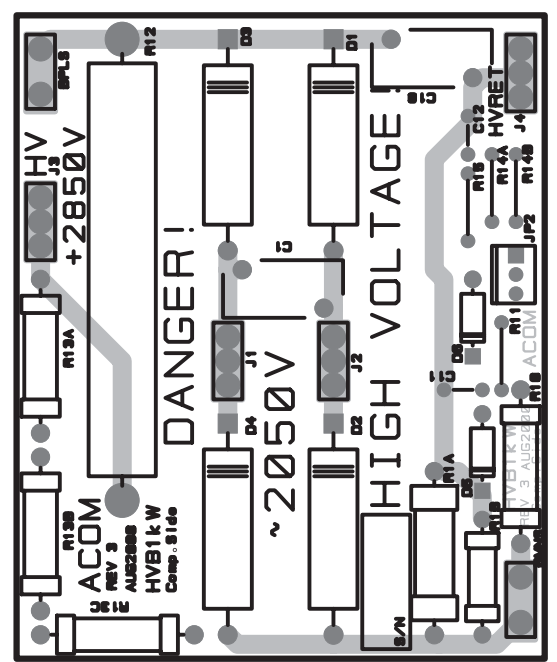


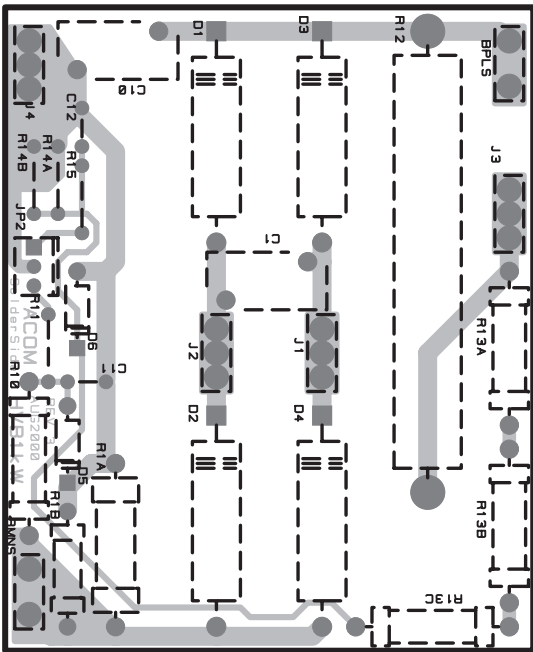
Fan Monitor  
Component side



Fan Monitor  
Solder side

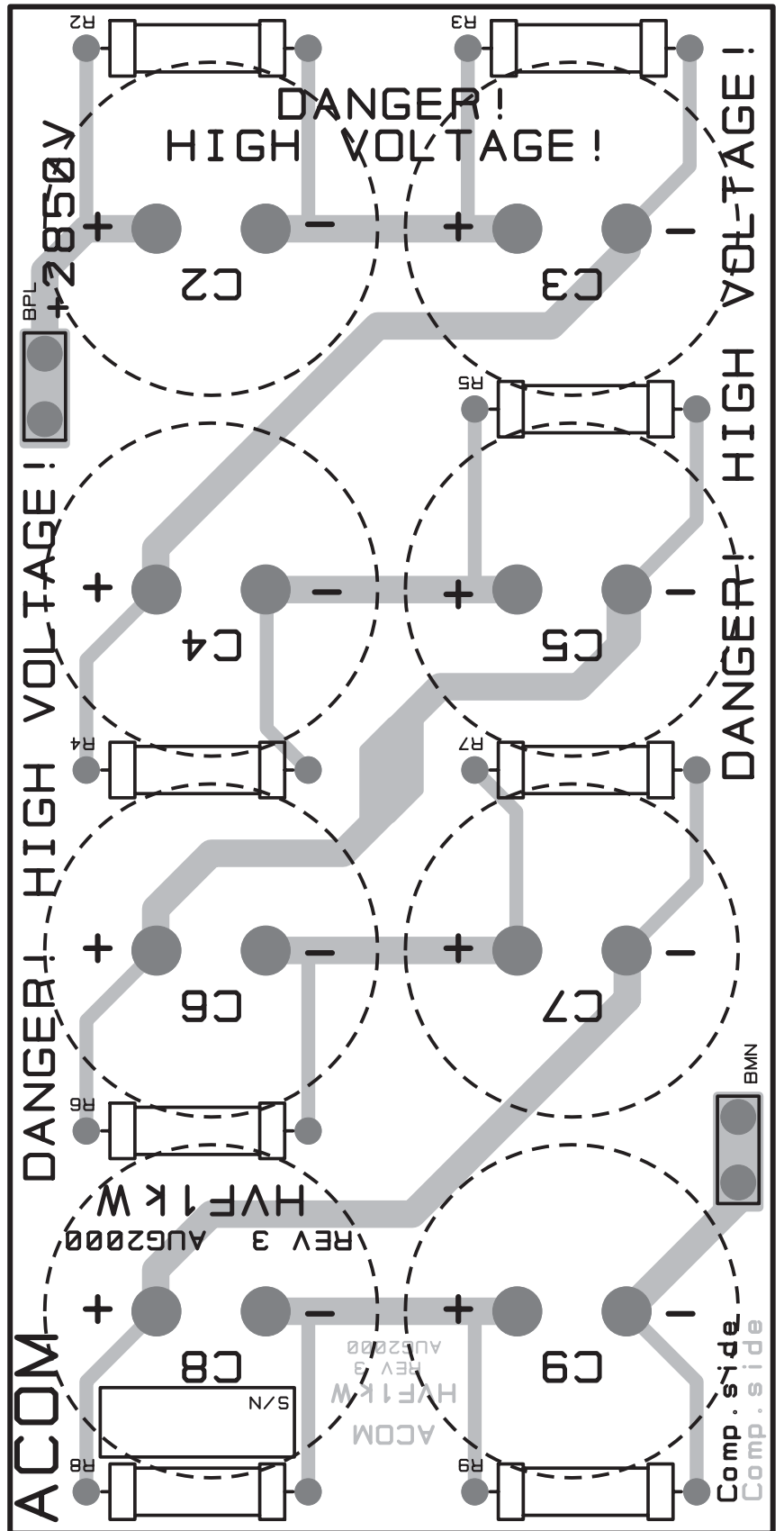




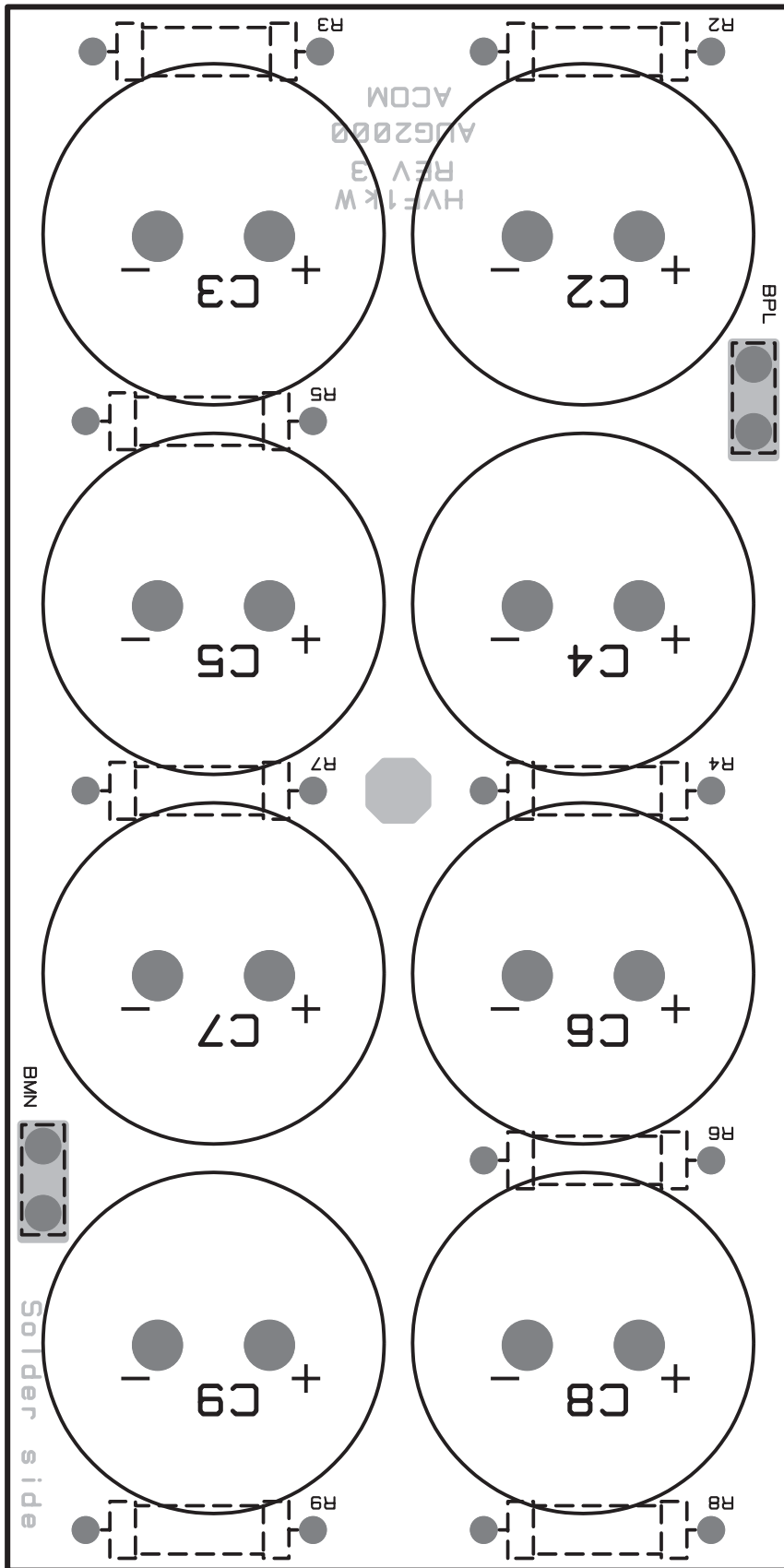


**HV BRIDGE**  
Solder side

Appendix B

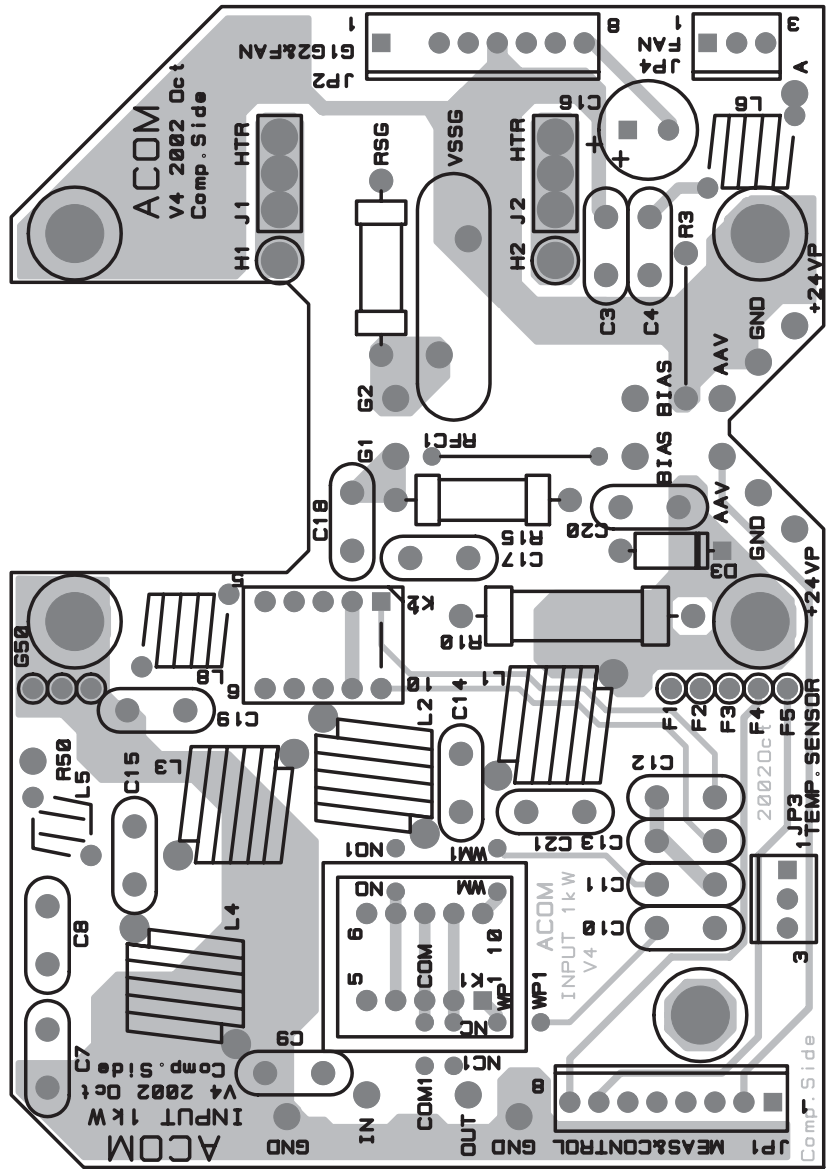


HV FILTER  
Component side

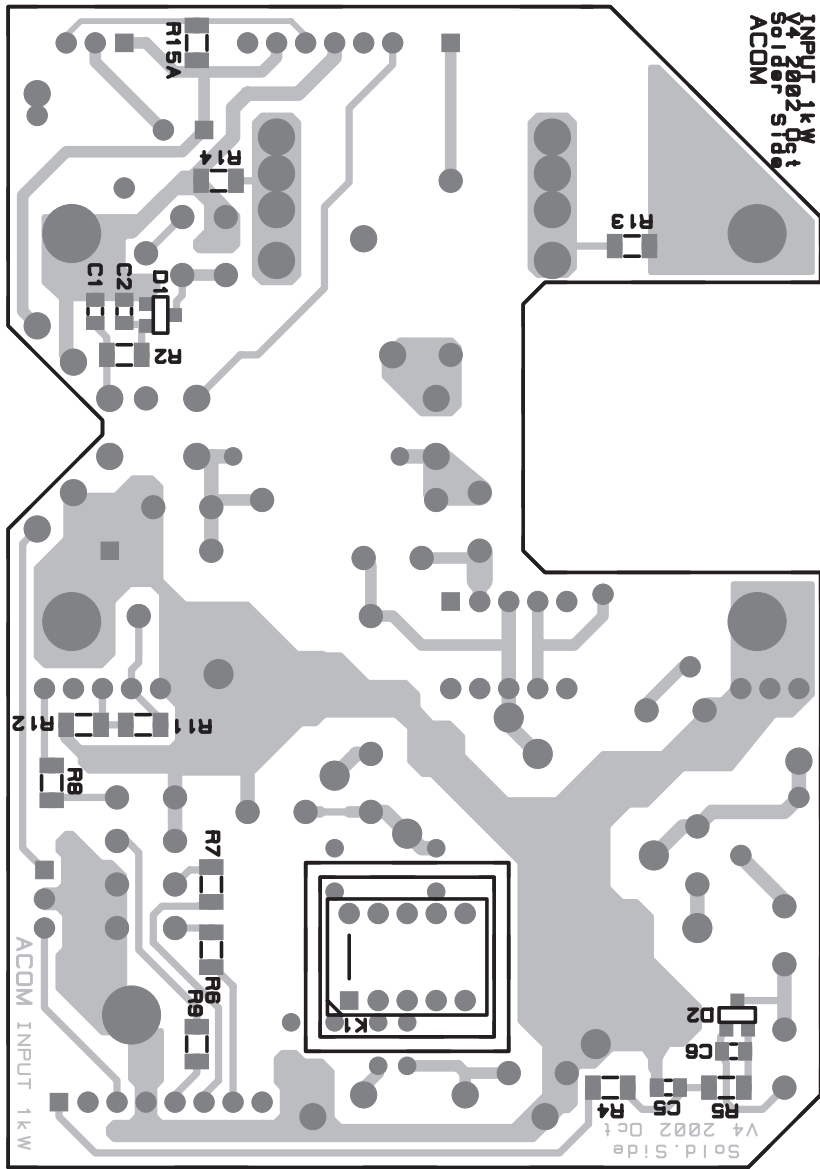


**HV FILTER**  
**Solder side**

Appendix B

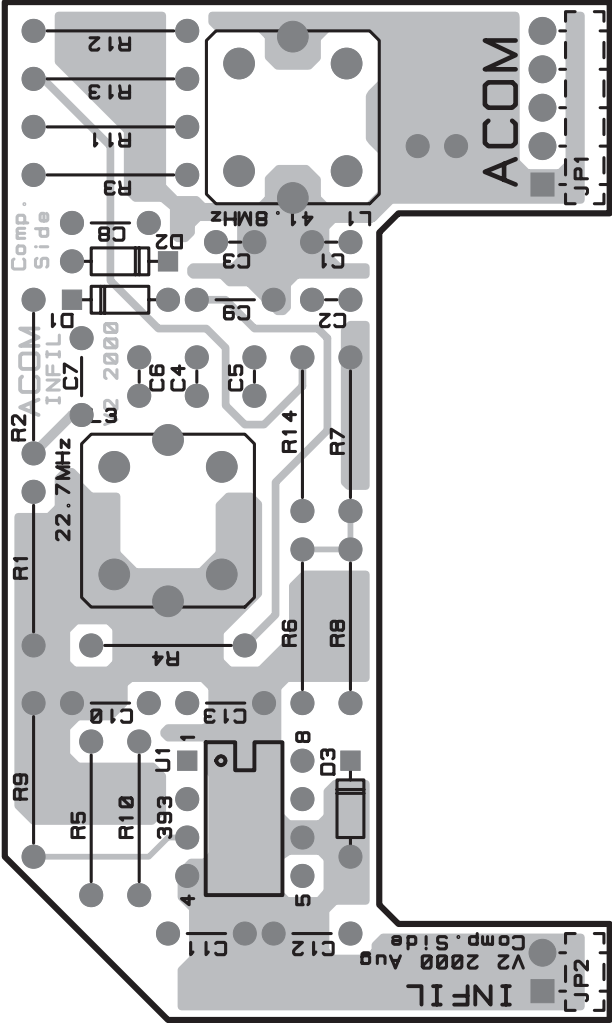


**INPUT**  
Component side

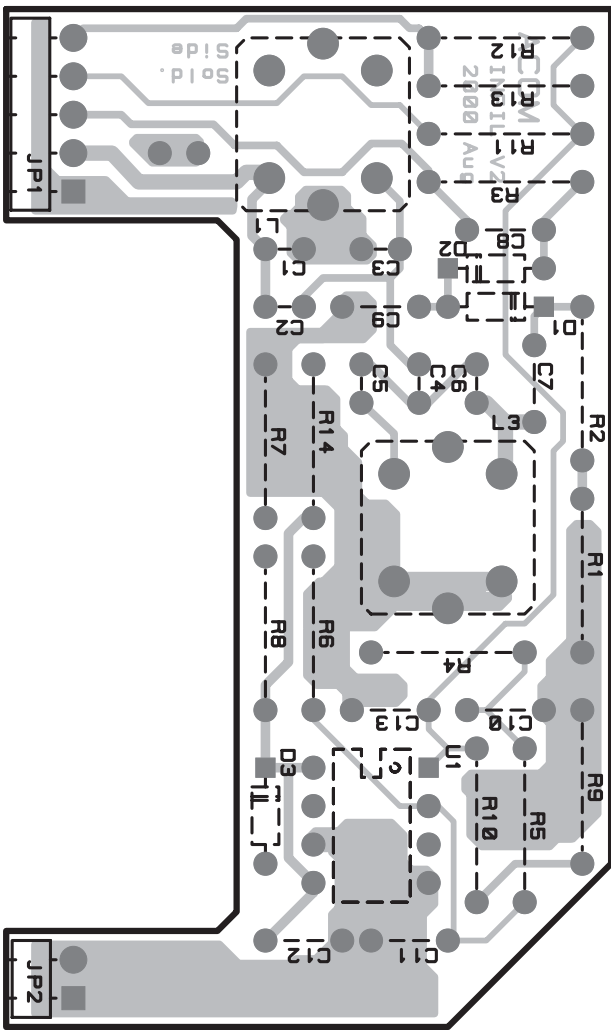


**INPUT**  
Solder side

Appendix B



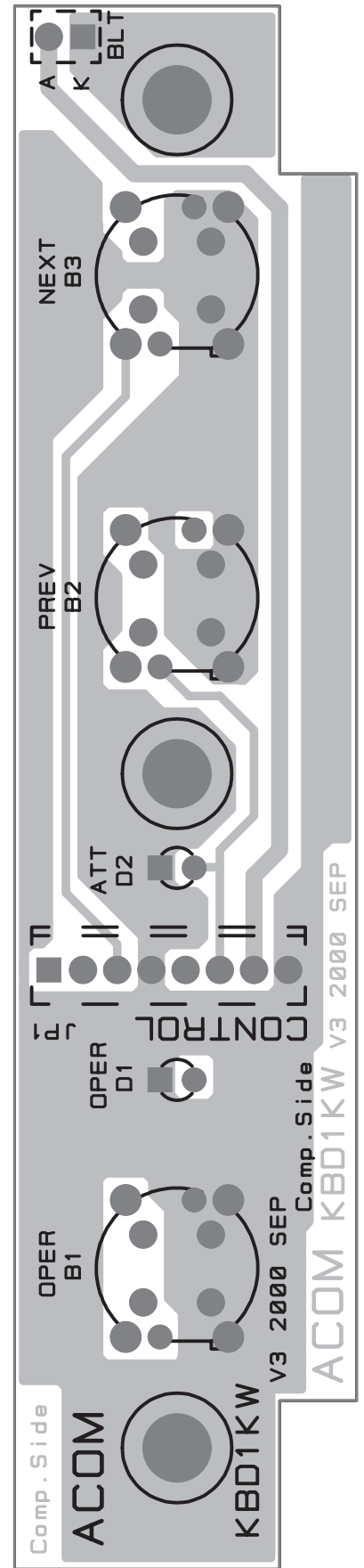
**INPUT A**  
Component side



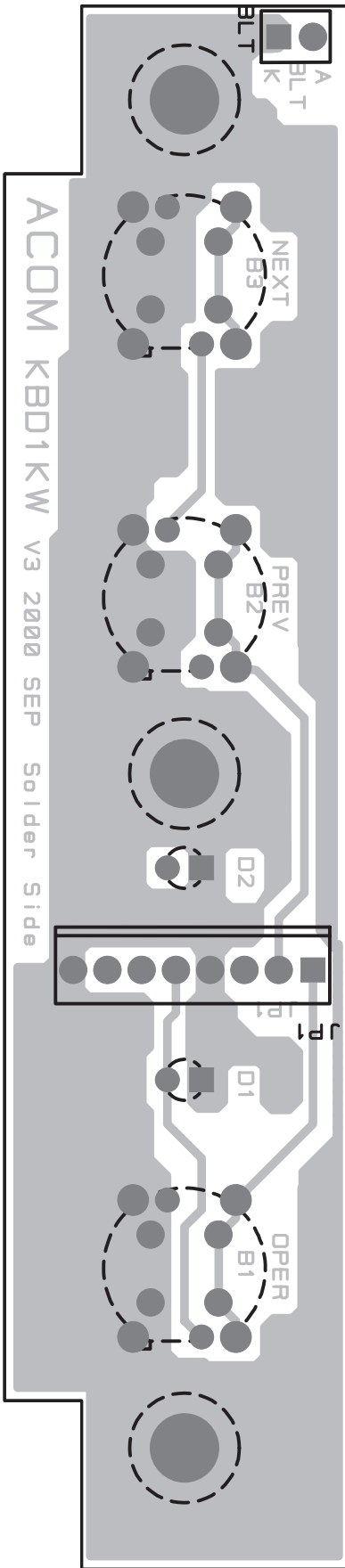
**INPUT A**  
Solder side



Appendix B

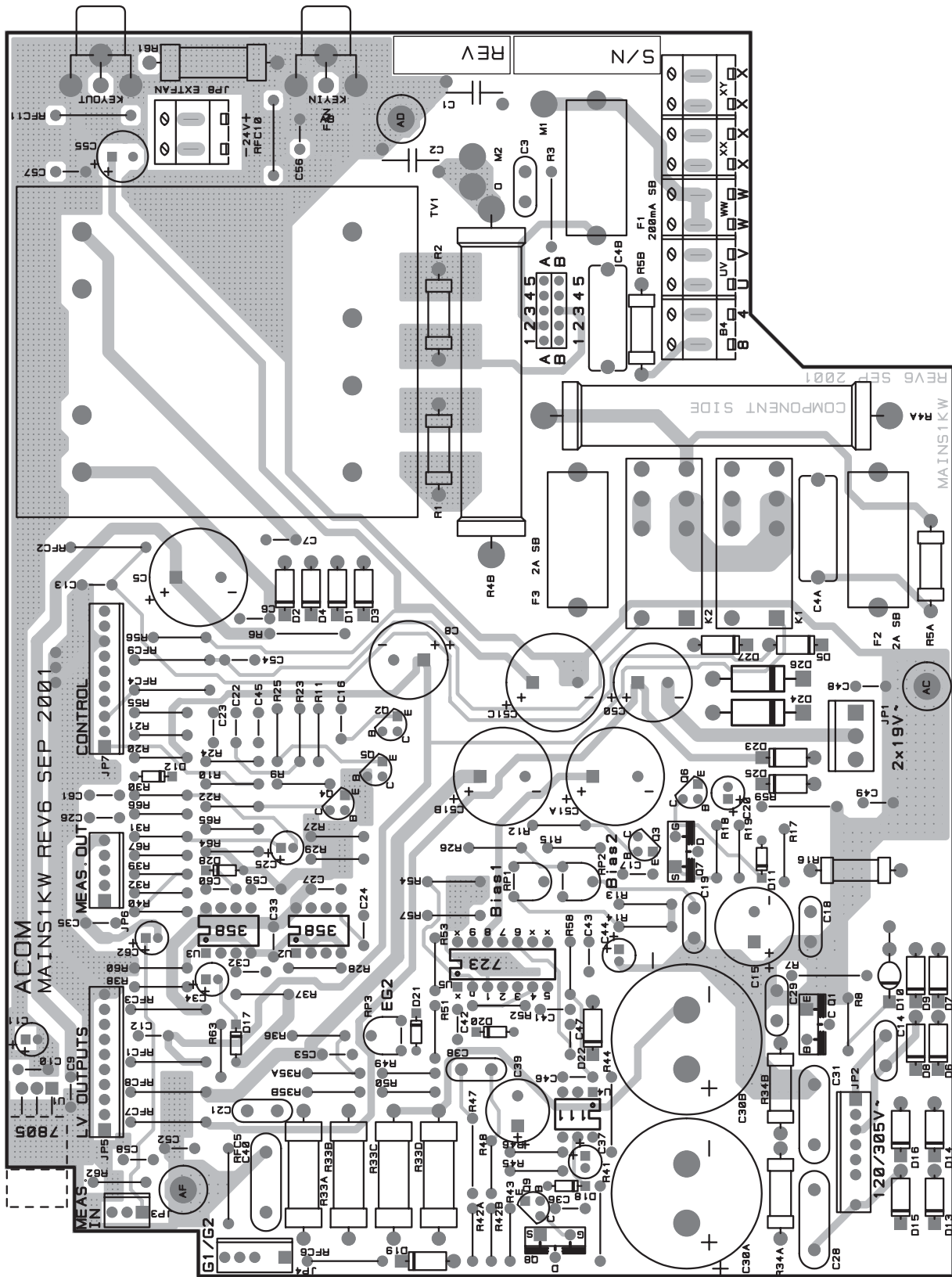


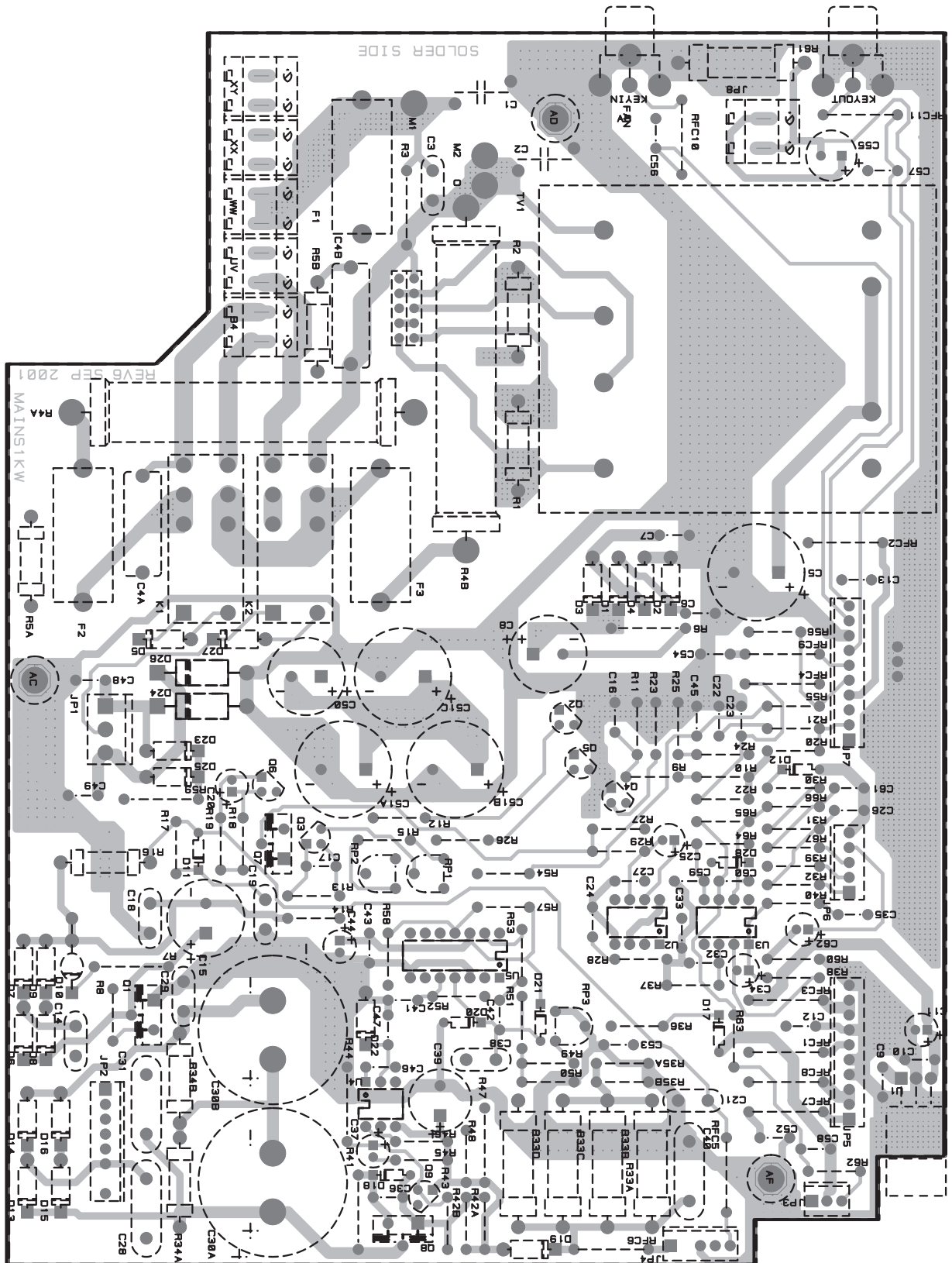
**KEYBOARD**  
Component side



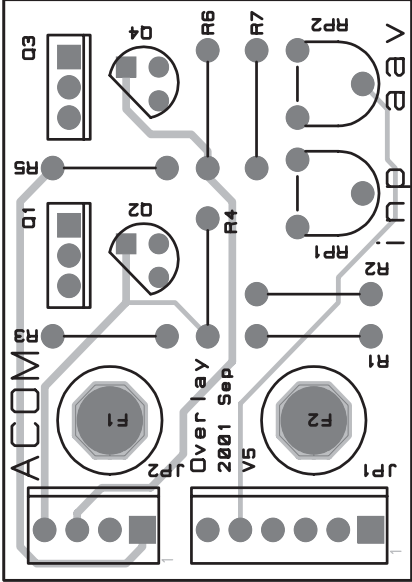
**KEYBOARD**  
**Solder side**

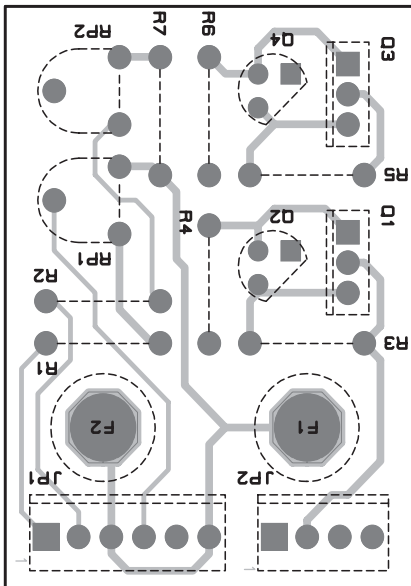
Appendix B

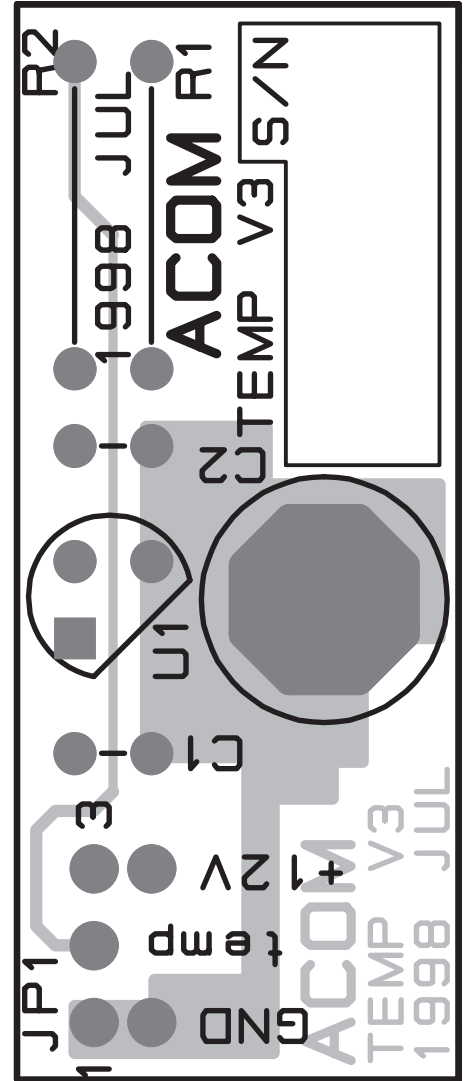




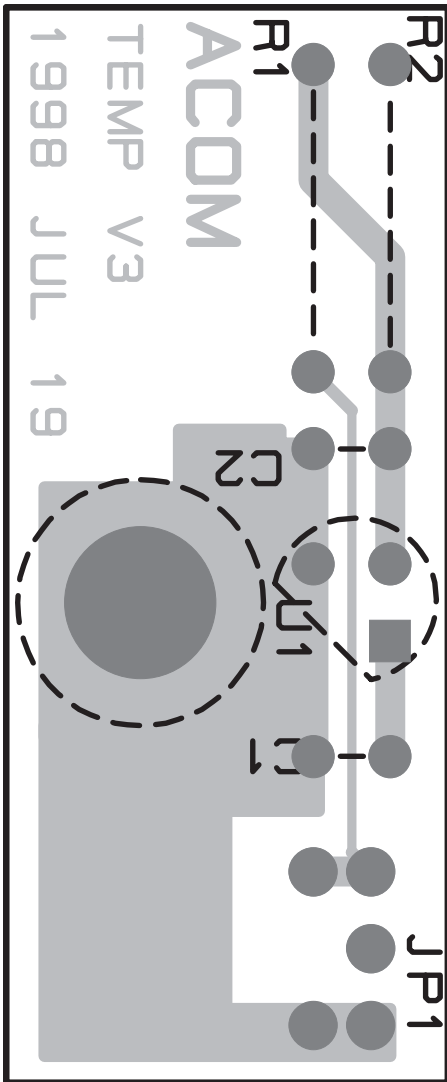
Appendix B







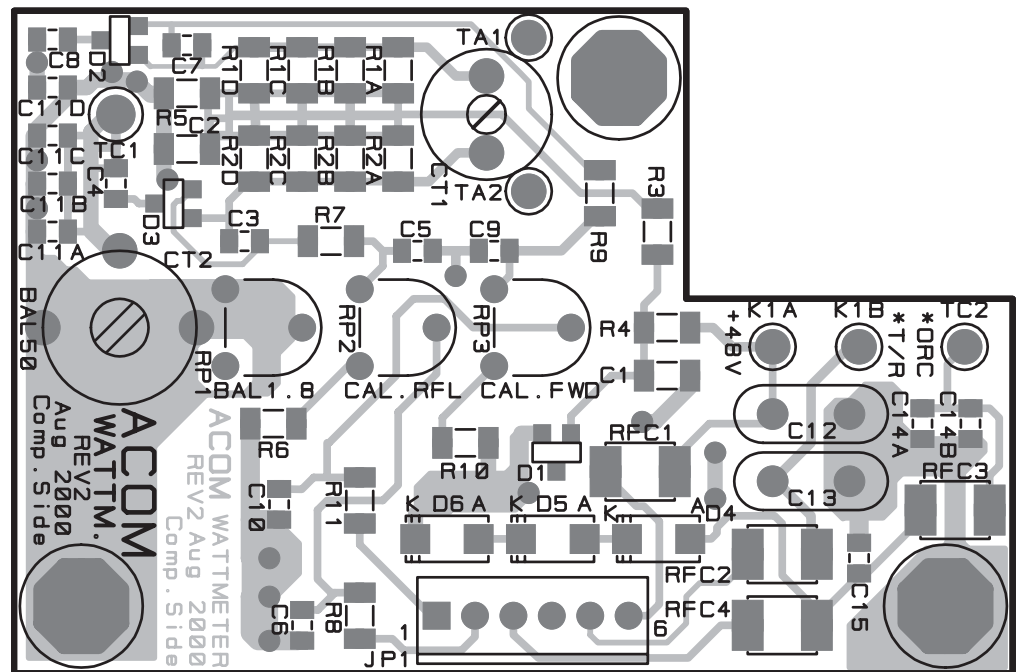
**TEMPERATURE SENSOR**  
Component side



**TEMPERATURE SENSOR**  
Solder side



Appendix B



**WATTMETER**  
Component side

