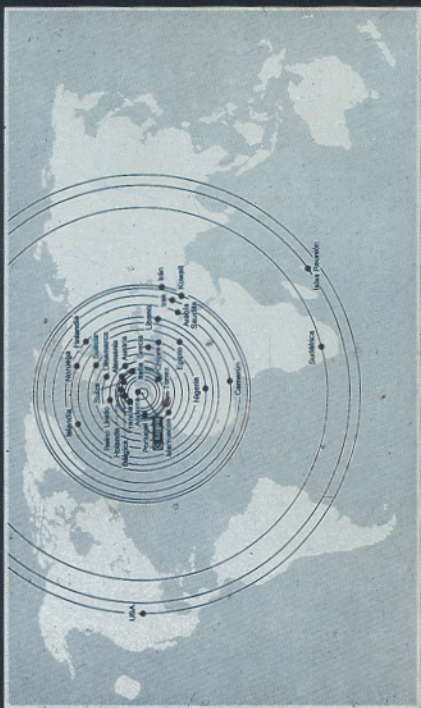
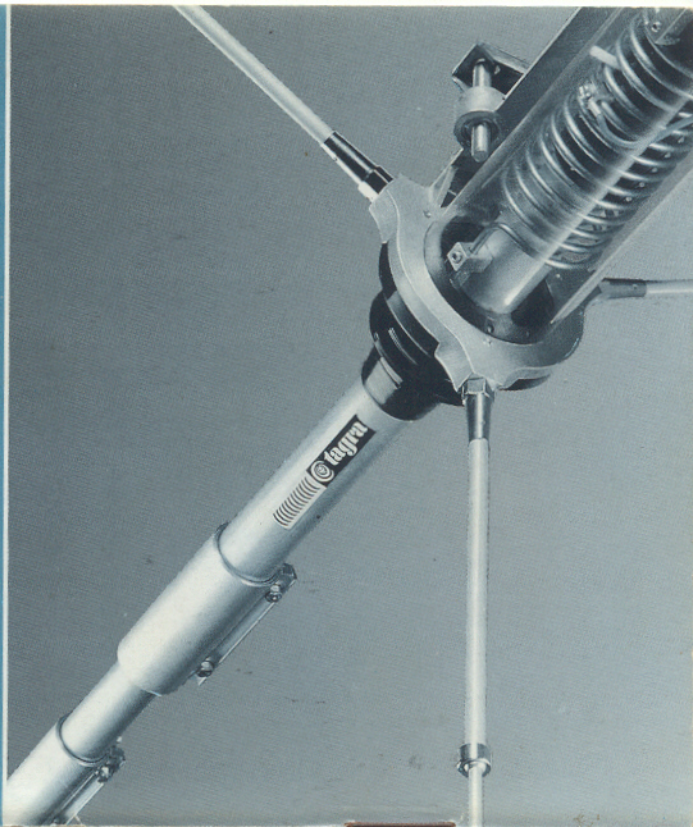




Fundada en 1941

- Catálogo General de Antenas de Radiocomunicación
- General Catalogue of Radiocommunication Antennas
- Catalogue Général d'Antennes de Radiocommunication




Tagra, S.A.
Eduardo Marisany, 341
Apartado de Correos 30
08912 Badalona (Barcelona) ESPAÑA
Tels. (93) 388 01 04
(93) 388 82 11
Fax (93) 397 81 25 - Dpto. Ventas y Expediciones
(93) 388 54 76 - Dpto. Técnico y Post. Venta
Télex 59558 tagra e

Delegación Madrid:
Tagra, S.A.
Sancho Dávila, 11
28028 Madrid
Tels. (91) 361 16 04
(91) 358 03 12
Fax (91) 361 39 71

PAZROCIMAT - PATROCINADO
SPONSORED BY - SOUS LE PATRONAGE



Albacete
Alcala de
Almería
Asturias
Avila
Bilbao
Burgos
Castellón
Ciudad Real
Córdoba

Guencia
Granada
Girona
Guadalajara
Huelva
Huesca
León
La Coruña
Las Palmas
León

Lérida
Logroño
Lugo
Málaga
Murcia
Navarra
Orense
Palencia
Pontevedra
Salamanca
Santander

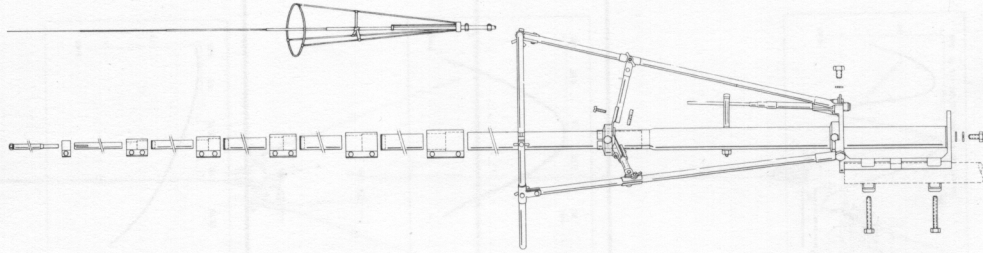
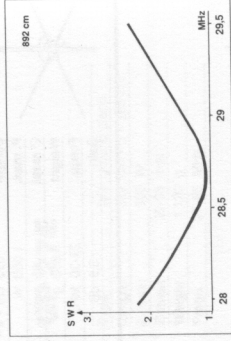
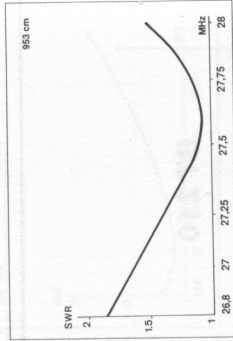
Segovia
Sovilla
Tarragona
Tarragona
Teruel
Toledo
Valencia
Valladolid
Vizcaya
Zamora
Zaragoza

Delegaciones y Depósitos

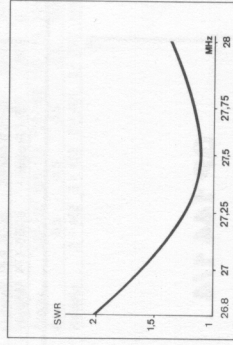
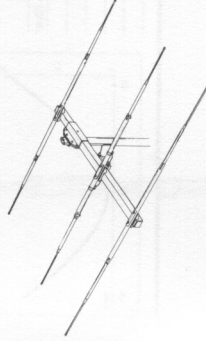
CAD. S.A.

BT 104

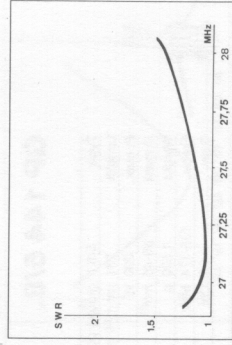
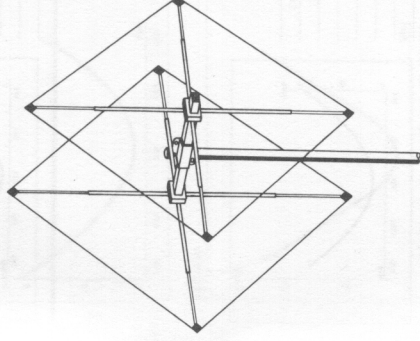
Type	7/8 λ
Length	953 cm
P. max.	1.000 W
∅ mast	35-45 mm
Weight	5.500 g
Frequ.	27-29,5 MHz
Gain	6,5 dB


AH 03

Type	3 elem. Yagi
L (boom)	248 cm
L (El.)	540 cm
P. max.	1.000 W
∅ mast	30-45 mm
Weight	5.460 g
Frequ.	27-28,8 MHz
Gain	7 dB
Pol.	V/H


BT 122

Type	Cubical quad
Length	145 cm
P. max.	1.000 W
∅ mast	30-45 mm
Weight	6.750 g
Frequ.	27-28,8 MHz
Gain	5,5 dB
Pol.	V/H

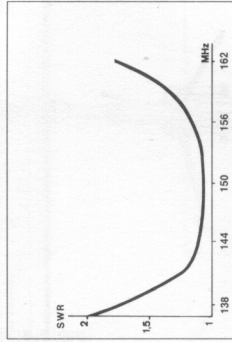
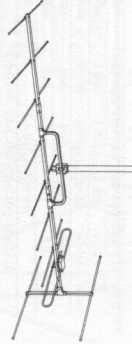




VHF Base Antennas

AX 22

Type	10 elem. Yagi
Length	330 cm
P. max.	200 W
Ø mast	35-60 mm
Weight	3.340 g
Frequ.	142-148 MHz
Gain	11,5 Dbi



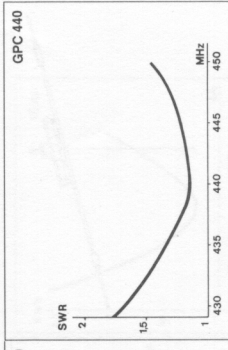
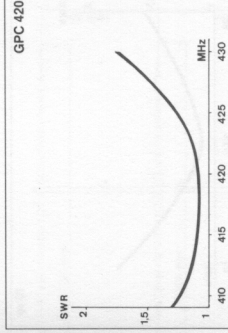
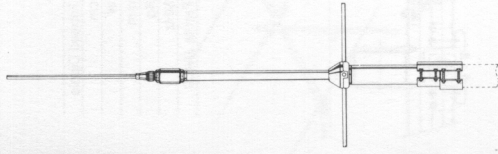
VHF Base Antennas

GPC 420

GPC 440

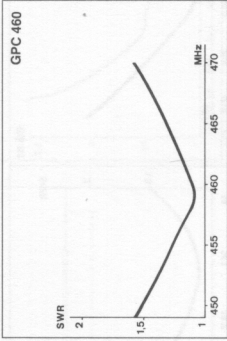
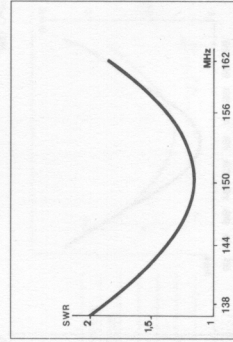
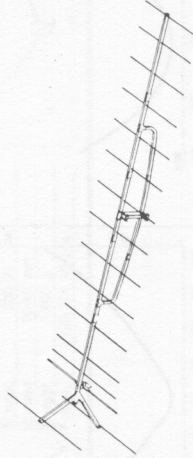
GPC 460

Type	GPC420	GPC440	GPC460
Length	86	82	78
P. max.	150	150	150
Ø mast	35-45	35-45	35-45
Weight	815	815	815
Frequ.	410-430	430-450	450-470



AX 24

Type	16 elem. Yagi
L Boom	635 cm
P. max.	1.000 W
Ø mast	30-45 mm
Weight	5.000 g
Frequ.	144-146 MHz
Gain	14,4 Dbi

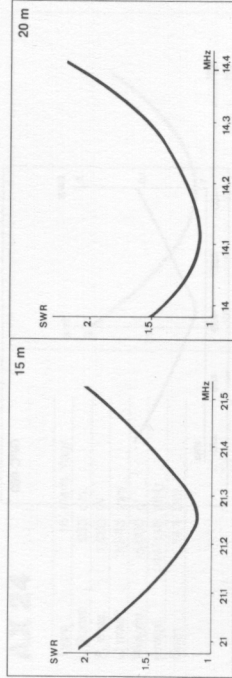
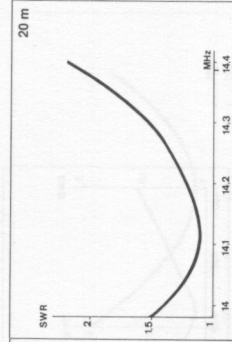
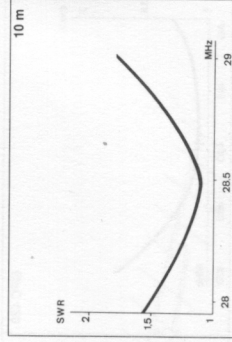
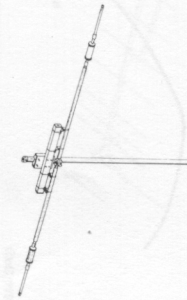
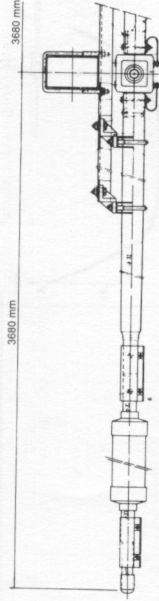




HF Base Antennas

DDK-10

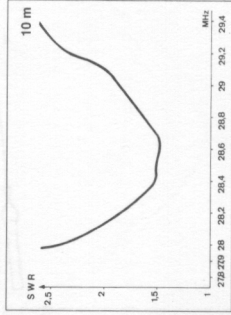
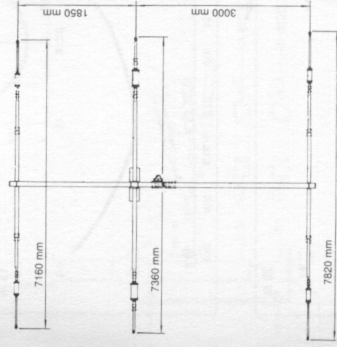
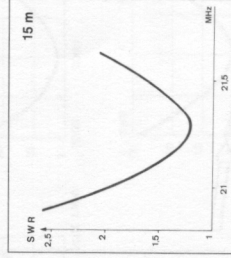
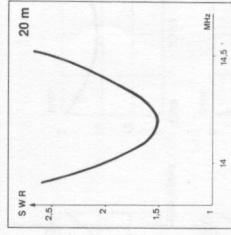
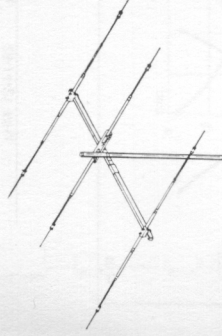
Type	Triband Dipole
Length	750 cm
P. max.	1.000 W
∅ mast	35-50 mm
Weight	7 Kg
Frequ.	14-21-28 MHz
Balun	Ferrita JA400



HF Base Antennas

AH-15

Type	Triband Yagi
P. max.	1.000 W
∅ mast	35-50 mm
Weight	25 Kg
Frequ.	14-21-28 MHz
Gain	7/8.5 Dbi.
F/B ratio	15/20 Db.
Balun	Ferrita JA-400

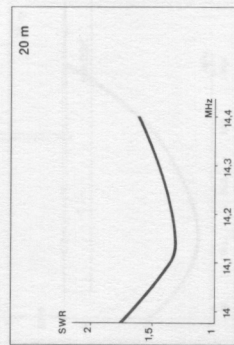
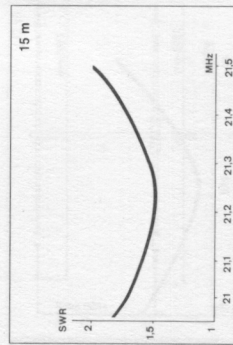
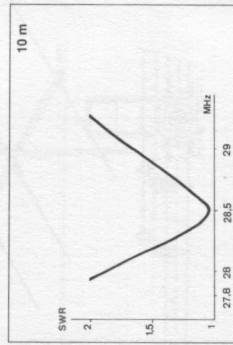
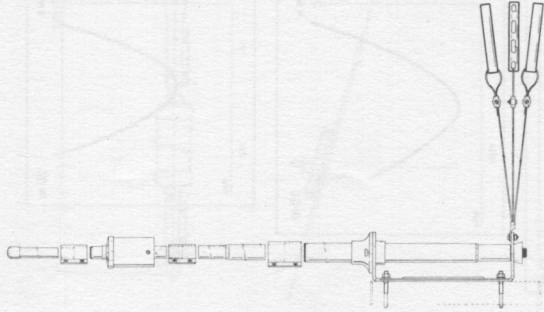




HF Base Antennas

GP 20

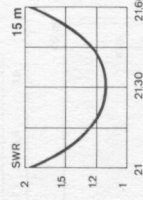
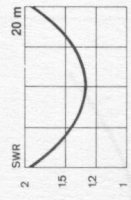
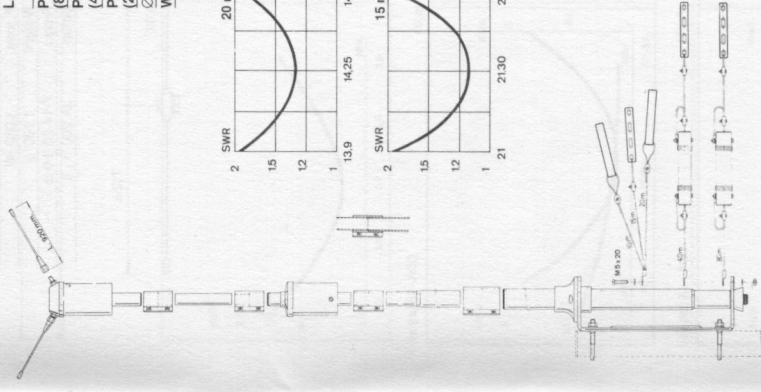
Type	Ground-Plane
Length	380 cm + (640 cm + 260 cm)
P. max.	1.000 W
Ø mast	30-45 mm
Weight	2.900 g
Frequ.	28-14-21 MHz



HF Base Antennas

GP 40

Type	Ground Plane
	(5 Bands)
Length	465 cm + 3 x 640 cm + 354 cm + 255 cm
P. max. (60 m)	300 W
P. max. (40 m)	500 W
P. max. (20-15-10)	1000 W
Ø mast	30-35 mm
Weight	3.6 Kg

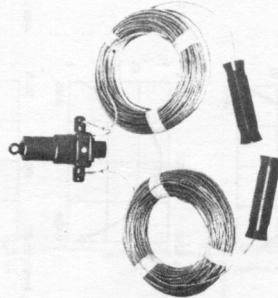
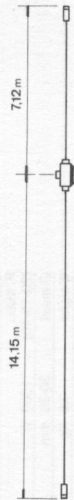




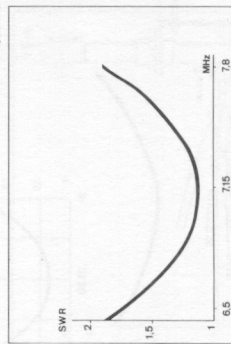
HF Base Antennas

DDK15

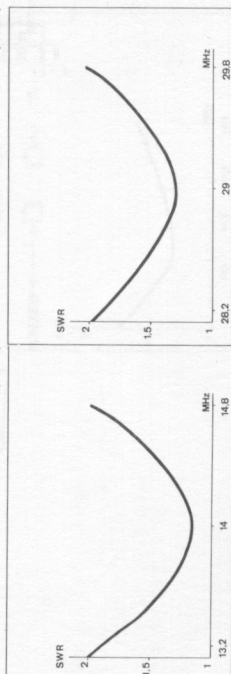
Type	Windon
Length	21,3 m
P. max.	1.000 W
Weight	1.100 g
Frequ.	7-14-28 MHz
Balun	JA 200 1 : 6



DDK-15 (40 m)

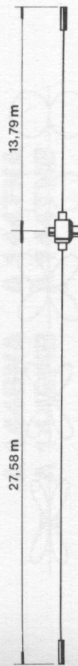


DDK-15 (10 m)

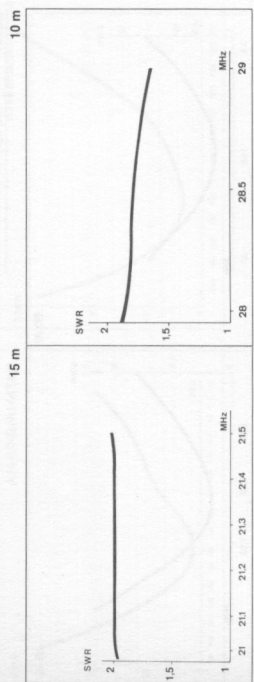
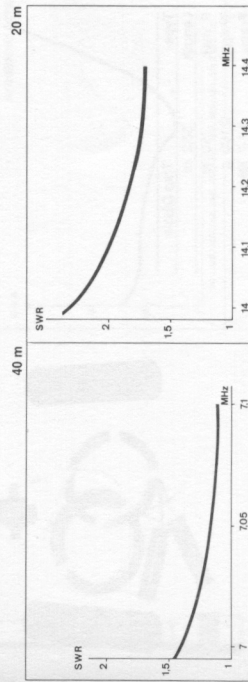
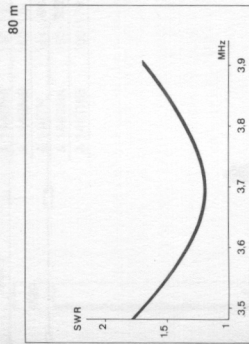


HF Base Antennas

DDK 20



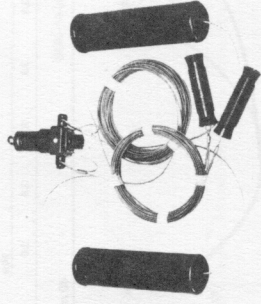
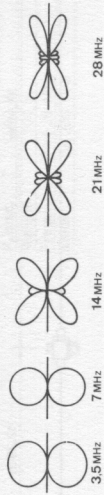
Type	Windon
P. max.	1.000 W
Weight	2.100 g
Frequ.	3,7-7-14-21-28 MHz
Balun	JA 200 1 : 6



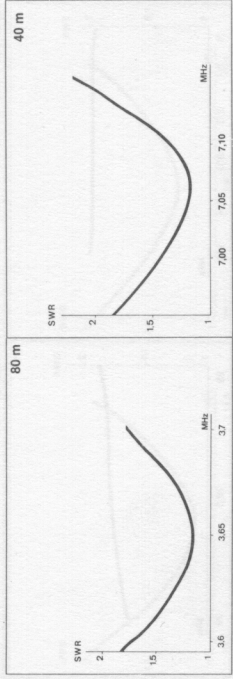


HF Base Antennas

DDK40



Type	Trap Dipole
Length	33.2 m
P. max.	750 W
Weight	2,100 g
Frequ.	3.7-7 MHz
Balun	JA 400 1 : 1



Walkie-Talkie Antennas



A 144BN A 144BNA A 144BNB

A 144TN A 144TNA A 144TNB

Antenna	Frequ.	Connector	Length	P. max.	Type
A 144 BN	144-150	BNC	170 mm	10 W	1/4 λ
A 144BNA	150-160	BNC	165 mm	10 W	1/4 λ
A 144BNB	160-174	BNC	155 mm	10 W	1/4 λ
A 144 TN	144-150	TNC	170 mm	10 W	1/4 λ
A 144TNA	150-160	TNC	165 mm	10 W	1/4 λ
A 144TNB	160-174	TNC	155 mm	10 W	1/4 λ

