

TELREX ANTENNA

ASSEMBLY INSTRUCTIONS

MODEL

TB6EM

SERIAL NO.

60273

PUR. DATE

7-29-83

IMPORTANT!

WHEN REFERRING TO THIS CUSTOM-BUILT TELREX EQUIPMENT, PLEASE SUPPLY MODEL NUMBER, SERIAL NUMBER, DATE OF PURCHASE AND FROM WHOM, SO THAT WE CAN MORE EFFECTIVELY HANDLE YOUR INQUIRY.

NOTE:

TO HELP PRESERVE ELECTRICAL CONTINUITY, ONLY TELREX ANTI-SEIZE (ANTI-CORROSIVE) COMPOUND (NO OTHER) SHOULD BE APPLIED TO ALL ALUMINUM TUBING MATING SECTIONS. THIS IS CONTAINED IN THE ENCLOSED ROUND PILL BOX. WARNING! DO NOT USE IT ON INSULATORS OR ACROSS ELECTRICAL CONNECTIONS.

ANTENNAS

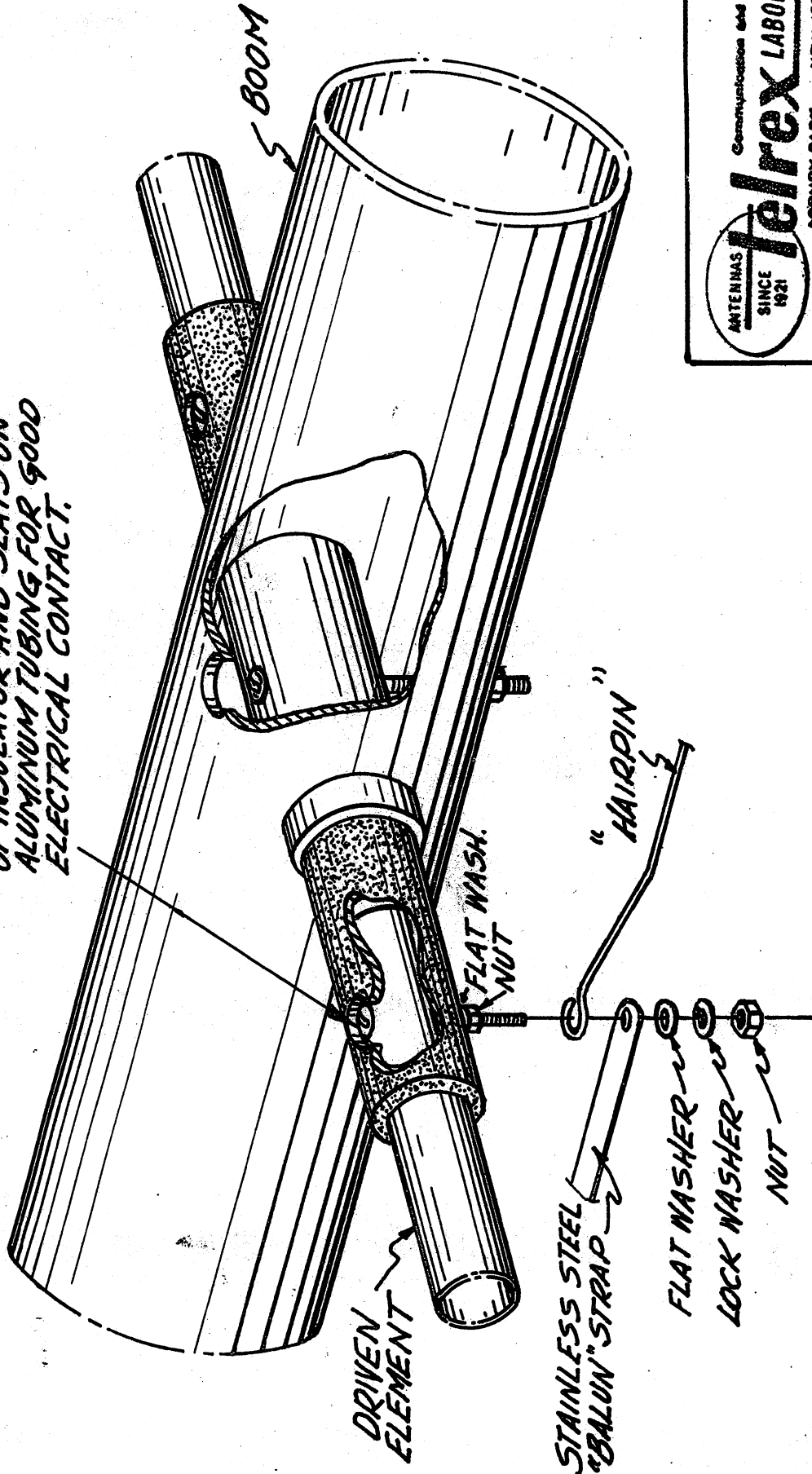
SINCE
1921

Communication and TV Antennas
telrex **LABORATORIES**

ASBURY PARK

NEW JERSEY, U. S. A.

SLIDE TUBING INSIDE INSULATOR.
 STAINLESS STEEL SCREEN HEAD
 GOES INTO LARGE HOLE IN TOP
 OF INSULATOR AND SEATS ON
 ALUMINUM TUBING FOR GOOD
 ELECTRICAL CONTACT.

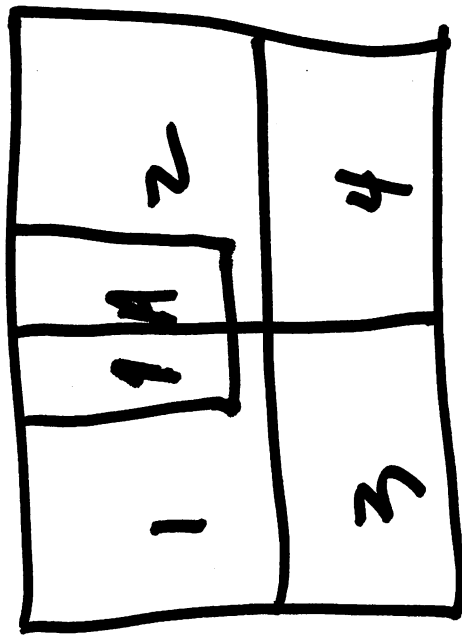


ANTENNAS
 SINCE 1921
Jelrex LABORATORIES
 COMMUNICATIONS AND TV ANTENNAS
 ABBURY PARK NEW JERSEY, U.S.A.

ASSEMBLY OF
 DRIVEN ELEMENT

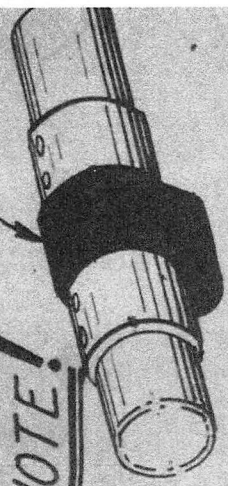
DRWG. NO. - C730402RA

TB6EM



NOTE: THE CAPACITY OF THE DRIVEN ELEMENTS LONGER THAN THE TRAP.

NOTE!



ASSEMBLE ELEMENTS AND ANTENNA SO THAT CAPACITORS ARE DOWN (AS ILLUSTRATED)

10 METER DIRECTOR

10 METER REFLECTOR

15 METER REFLECTOR

20 METER REFLECTOR

7" 80.0 X 72 1/4" EXTENSION OVERALL LENGTH 76 1/4"

SEE VIEW "A" EXCEPT #10-32 R.H. SCREW 1/2" LONG

1" 80.0 X 68" EXTENSION OVERALL LENGTH 72"

3/4" X 61"

3/4" X 85 3/4"

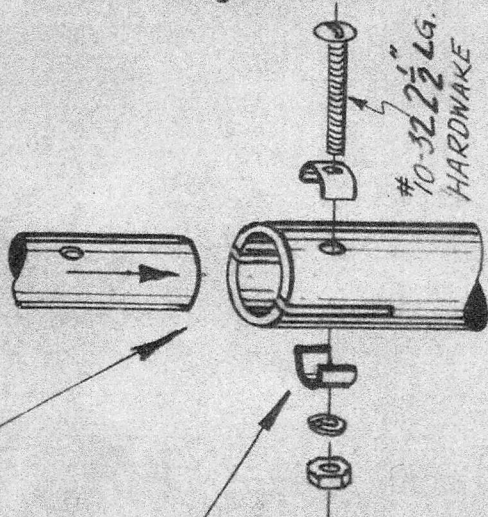
VIEW "A" #10-32 1 1/2" LG. HARDWARE

ASSEMBLY ELEMENT THROUGH

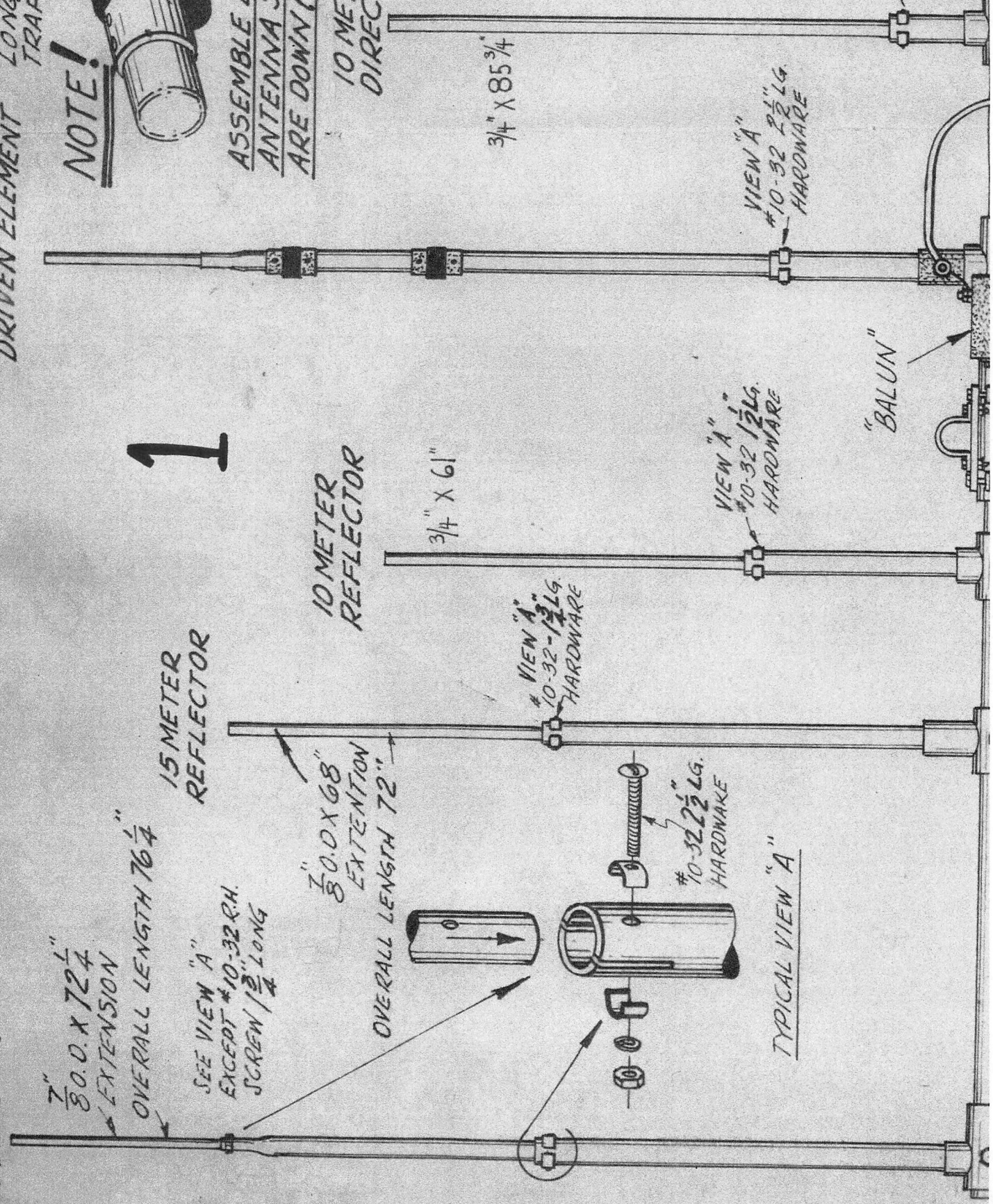
VIEW "A" #10-32 2 1/2" LG. HARDWARE

VIEW "A" #10-32 1 1/2" LG. HARDWARE

"BALUN"



TYPICAL VIEW "A"



SECTION OF
 TAP IS
 OF THE DIRECTOR

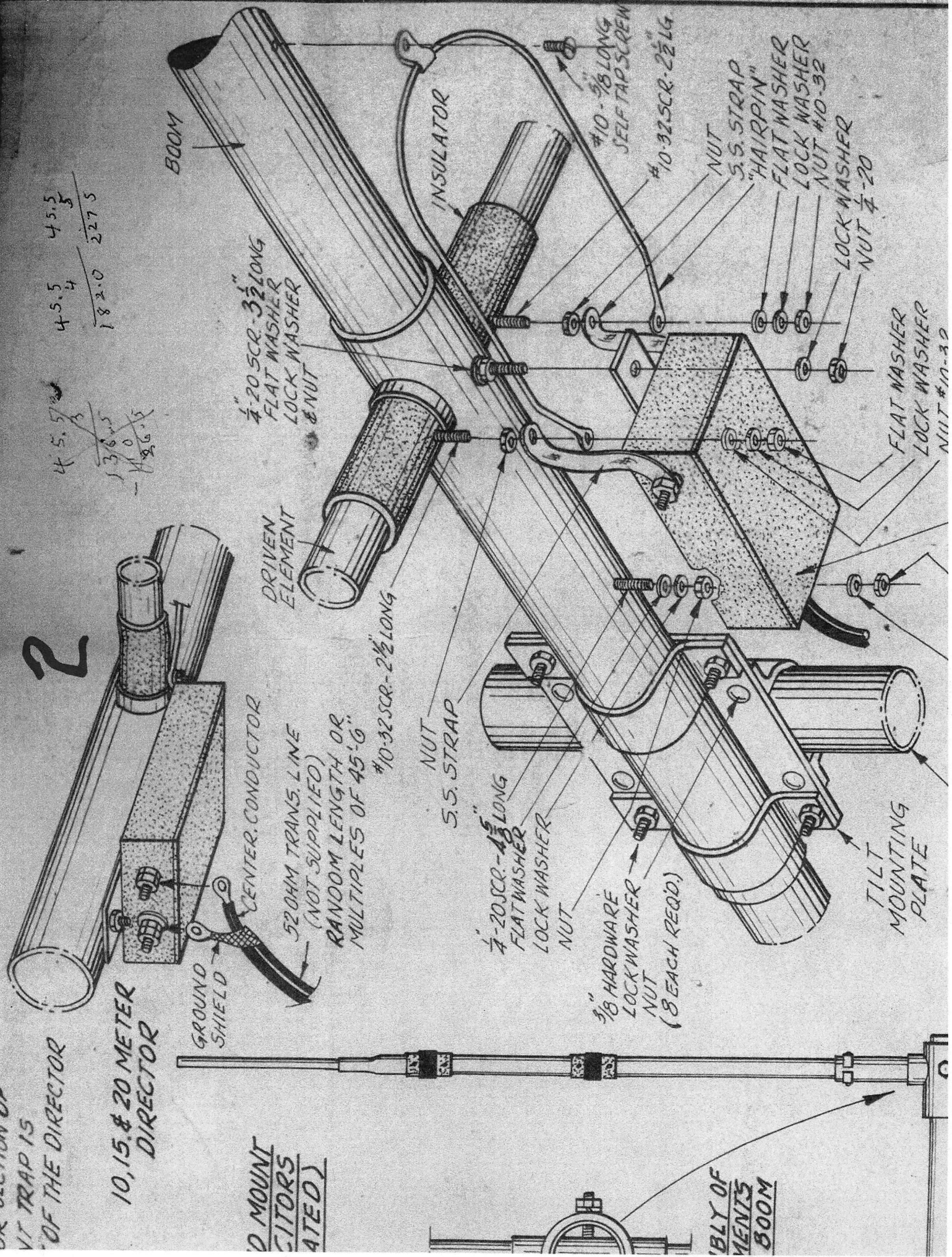
10, 15, & 20 METER
 DIRECTOR

TO MOUNT
 DIRECTORS
 (MATED)

ASSEMBLY OF
 DIRECTOR
 BOOM

2

45.5
 45.5
 182.0
 227.5



ALL PARTS
MARKED
D1

ALL PARTS
MARKED
DD

ALL PARTS
MARKED
10MR

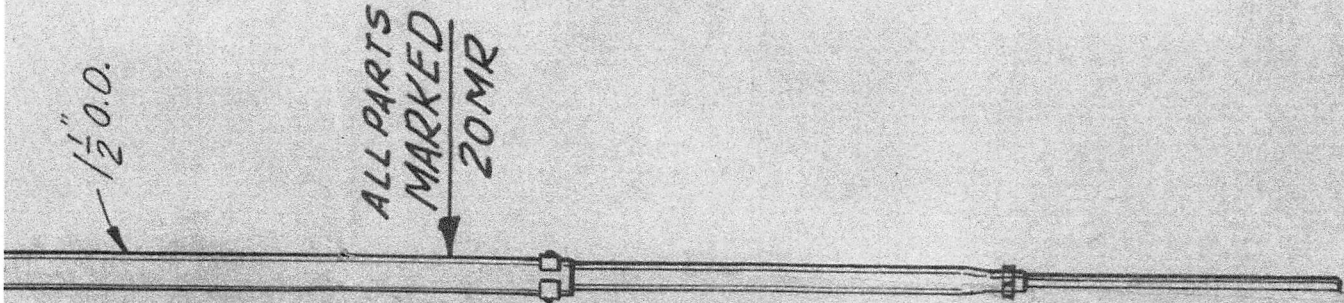
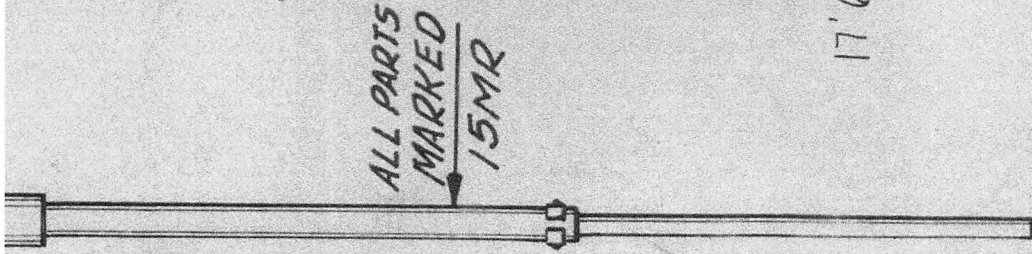
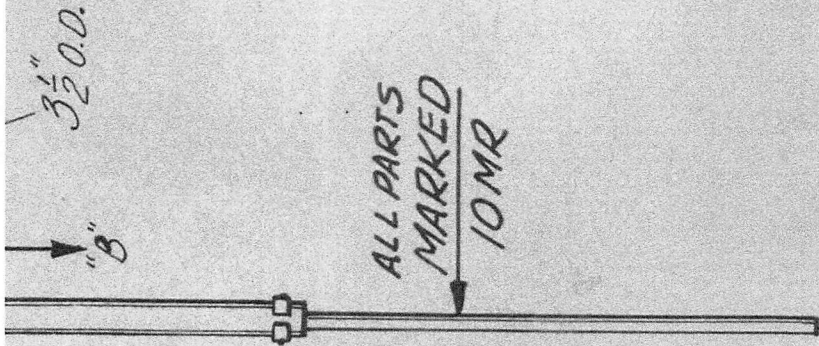
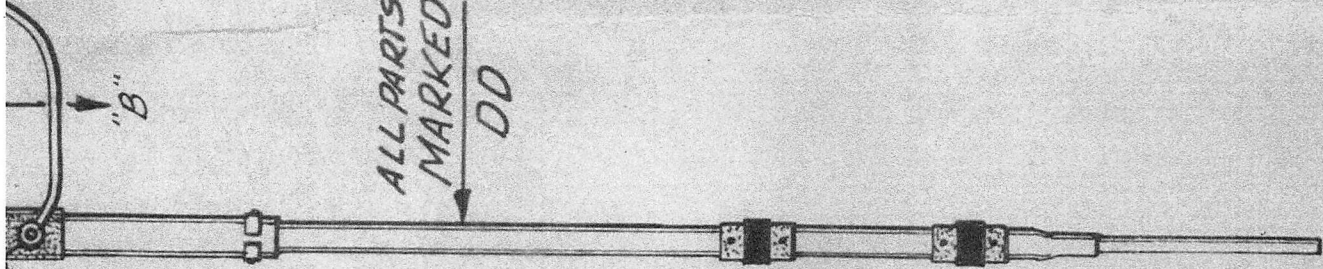
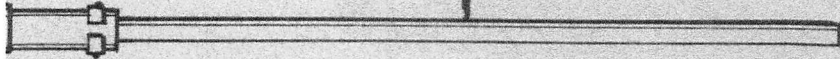
ALL PARTS
MARKED
15MR

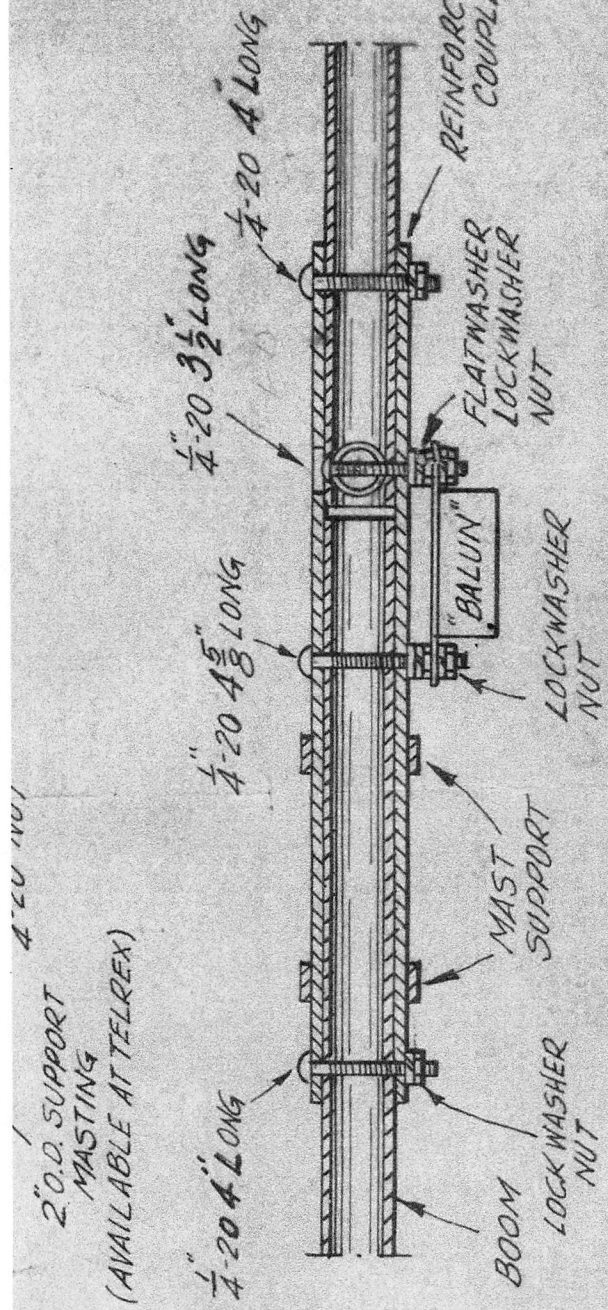
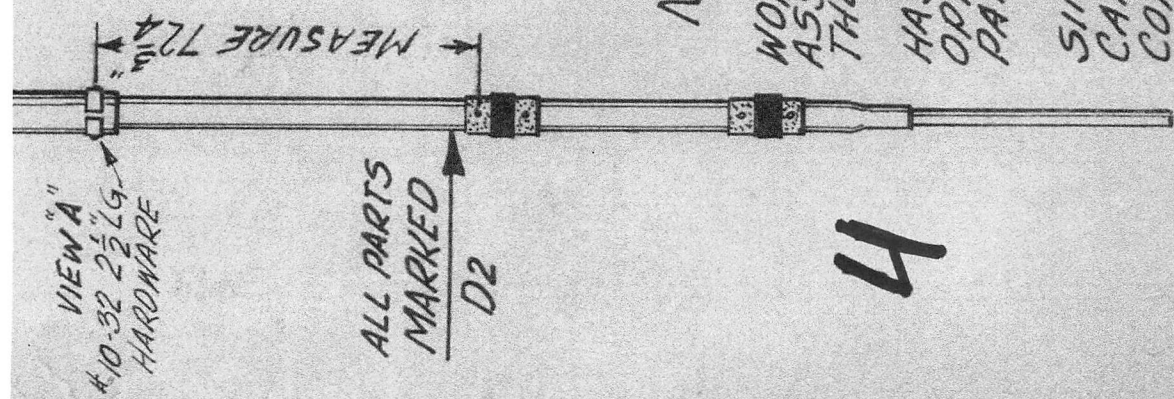
ALL PARTS
MARKED
20MR

26' 7 1/8" O.A.

17' 6" O.A.

3





SECTION "B-B"

NOTE!

THE WORLDS FINEST SINGLE-TRANSMISSION-LINE "TRI-BAND" IS WORTHY OF A LITTLE THOUGHT AND CARE ON YOUR PART--- BEFORE ASSEMBLY--- FAMILIARIZE YOURSELF WITH THE COMPONENTS AND THEIR PLACEMENT

DO NOT FORCE, ALTER, MODIFY, OR TRY ANY INVENTIONS! TELREX HAS PRECISION-TUNED AND MATCHED THIS ANTENNA TO PROVIDE OPTIMUM 10, 15 AND 20 METER GAIN, F/B RATIO, AND "BALANCED-PATTERN"

IF YOU HAVE FOLLOWED THIS SIMPLIFIED ASSEMBLY SHEET CAREFULLY, YOU ARE READY TO CONNECT YOUR 52 OHM CO-AXIAL TO THE "BALUN" PROVIDED.

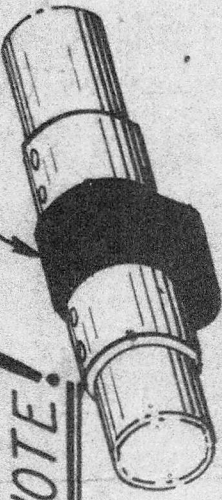
MOUNT THE ANTENNA IN THE CLEAR, 34 FEET OR HIGHER

TELREX MONARCH "TRI-BAND"®
 MODEL TBOEM
 ASSEMBLY INSTRUCTIONS

DRWG. NO. C760319 RA

NOTE: THE CAPACITOR SECTION OF THE DRIVEN ELEMENT TRAP IS LONGER THAN THAT OF THE DIRECTOR DRIVEN ELEMENT TRAP.

NOTE!



10, 15, & 20 METER DIRECTOR

ASSEMBLE ELEMENTS AND MOUNT ANTENNA SO THAT CAPACITORS ARE DOWN (AS ILLUSTRATED)

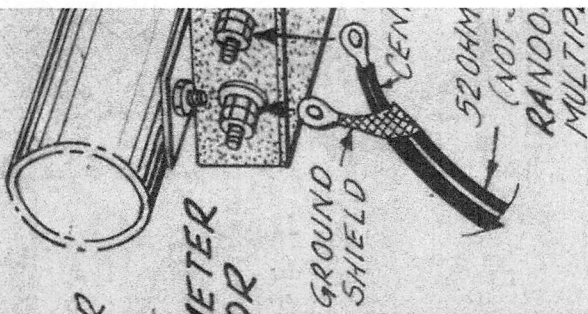
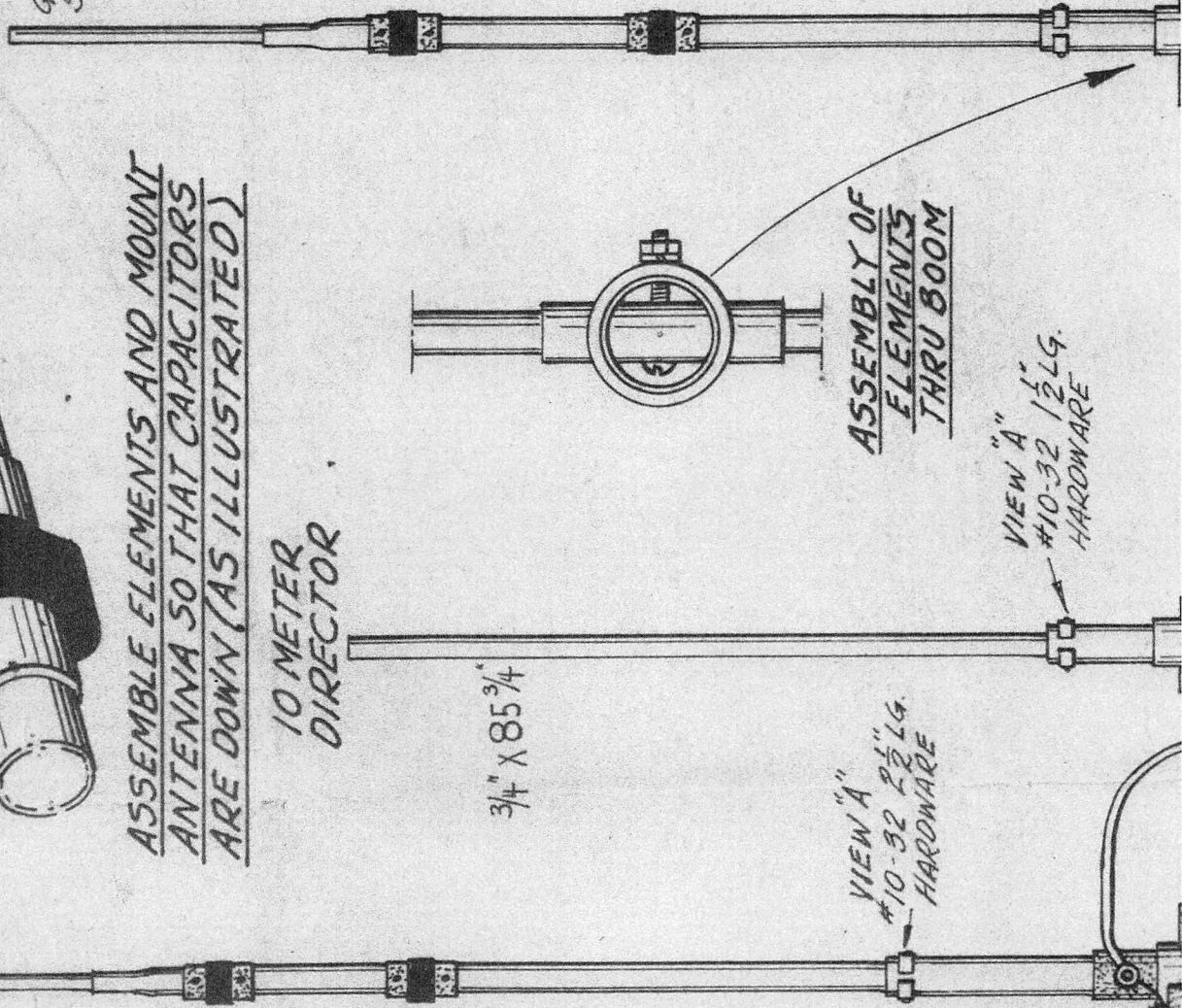
10 METER DIRECTOR

3/4" X 85 3/4"

VIEW "A"
#10-32 2 1/2" LG.
HARDWARE

VIEW "A"
#10-32 1 1/2" LG.
HARDWARE

ASSEMBLY OF ELEMENTS THRU BOOM



GROUND SHIELD

520 OHM (NOT RANOD. MULTIP.)

1/4-20 SOCKET FLAT WAS LOCK WASH NUT

3/8" HARDWARE LOCK WASHER NUT (8 EACH REQD.)

TIT MOUNT PLATE

1A