

FIGURE 2

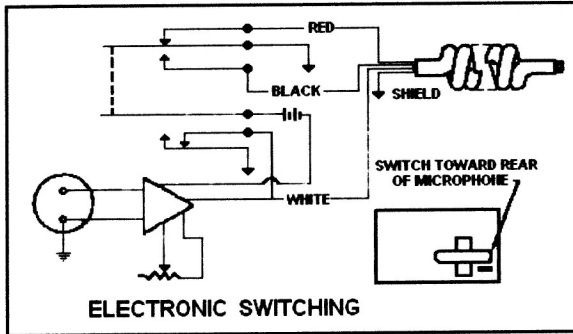


FIGURE 3

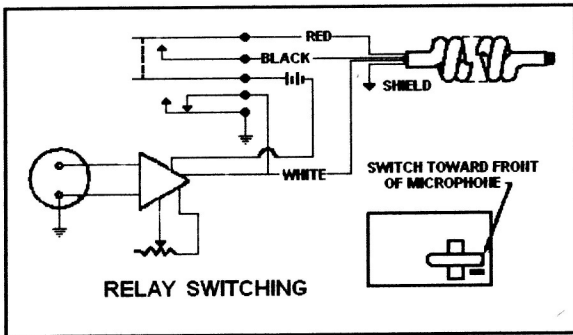


FIGURE 4

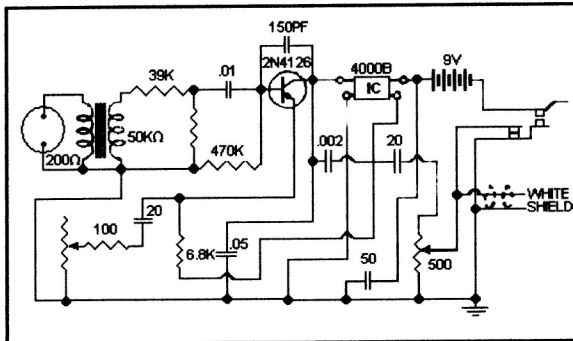
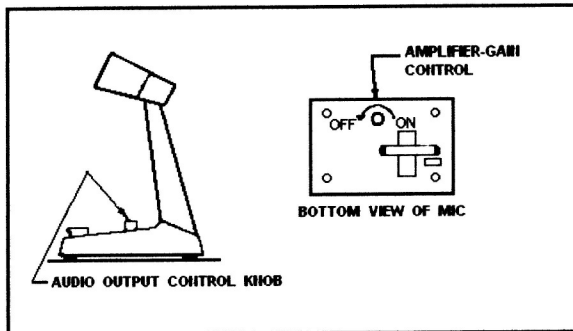


FIGURE 5



TURNER SUPER SIDEKICK

APPLICATION:

The Super Sidekick can be easily adapted to almost any transmitter. The white wire is the signal ("hot") lead and the shield provides a ground connection between microphone case and transmitter case/ground. The black and red leads provide the necessary control switching as shown in Figures 2 and 3. When replacing another microphone with a Super Sidekick, consult the equipment manual for proper wiring of the connector (if connector is used) and for proper position of the slide switch located on the bottom of the Super Sidekick. If an equipment manual is not available then care should be taken to analyze the microphone being replaced to determine connector connections and type of switching needed. Experience indicates that most difficulties in replacing a microphone occur as a result of poor workmanship in making up the connector. Avoid excessive heat which can damage insulation and keep exposed leads short to prevent shorting within the connector. In case of difficulty please do not tamper with the microphone as this will void the factory warranty. Contact factory for further instructions.

HOW TO ADJUST YOUR NEW SUPER SIDEKICK TO YOUR TRANSCEIVER:

In order to adjust your Super Sidekick microphone turn the top control to the maximum clockwise position and adjust the bottom gain control for 100% modulation. If by adjusting the top control to clockwise you achieve 100% modulation no adjustment of the bottom control is required as your microphone is matched.

Once the amplifier gain control on the bottom of the mic is adjusted to your satisfaction, it should not be tampered with.

To determine the proper adjustment we suggest that you hook the microphone to your set and adjust only the audio output on the top of the base for the first transmission. In many cases the control on the bottom of the mic may not need adjusting. If you do not have the output you

Desire, then you may adjust the screwdriver adjustment on the bottom of the mic to achieve your desired level.

On tube type sets, the bottom control will more than likely need adjusting. On transistorized sets this may not be necessary.

BATTERY REPLACEMENT:

The battery in the base of the microphone should be replaced as needed with one of the types listed under "Specification." Turn the battery hold down spring clamp 90 degrees and remove the battery. Unclip the connector from the battery and install a fresh battery making sure the new battery is in position and secured by the spring clamp.

TURNER MICROPHONES

TURNER DIVISION OF CONRAC CORPORATION
909 17th Street N.E. Cedar Rapids, Iowa 52402
(319) 365-0421 Telex: 484437

CONRAC

PRINTED IN U.S.A.