

A vintage speaker on a wooden desk with newspapers and a pen.

TURNER

Communicating
for over
45 years

**WIRING
BOOKLET**

TELEX

Scanned by
J.E. Braun

Downloaded by
RadioAmateur.EU



ATTENTION
Please
read the
following
12 pages
before wiring
your
microphone

The information contained in this booklet is intended to be used as an aid in wiring Turner microphones to various transceivers. Telex Communications Inc. cannot assume responsibility for damage caused by wiring errors, nor can we accept responsibility for damage to equipment which is used in conjunction with our microphones.

If your transceiver is not listed in this instruction manual or you feel you cannot connect the microphone properly with the information provided in this booklet, you may receive assistance by mailing a copy of the circuit schematic for your radio to:

Turner Division of
 Telex Communications, Inc.
 ATTN: Customer Service
 9600 Aldrich Ave. S.
 Minneapolis, MN 55420
 612-884-4051

*On the front cover is a 1933 vintage Turner condenser microphone.

ABBREVIATION EXPLANATION

The following abbreviations are used in this booklet, WR-77, listed in alphabetical order:

Bk black wire
 Bu blue wire
 Code (E) . electronic switching
 Code (R) . relay switching
 Code (S) . special switching, six-wire microphones
 (See page 4 for additional switching information)
 Gnd..... ground
 K denotes X1000, Ex: 33K ohms = 33000 ohms
 N/C no connection
 R red wire
 Rg ring, one of three conductors of a phone jack-type plug.
 S shield wire, also known as the ground wire.
 Se sleeve, one of three conductors of a phone jack-type plug.
 Sh shell
 Sw.K..... switch kit, applies only to desk microphones, see page 9, 'Receiver signal reduced or replaced by squealing.'
 Tp tip, one of three conductors of a phone jack-type plug.
 W white wire
 Y yellow wire

The following information is a breakdown of the symbol designation used with Turner microphones:

C ceramic interior — Ex: 450C
 CS custom special — Ex: **CS-1** (also referred to as special — Ex: **M+3special**, model numbers that have the last digit as "6", ie: RK56, RK66, or RK76 are also special microphones, see page 4 for further information.)
 D dynamic interior — Ex: 360D
 H high impedance — Ex: 566H
 J electronic switching — Ex: **JM+2/U** (a relay-switched microphone would be M+2/U)
 L low impedance — Ex: 360L or J450C-LO
 M medium impedance — Ex: NC350DM
 NC noise canceling — Ex: **NC450D**
 + amplified microphone — Ex: +350 or **M+3**
 R carbon interior — Ex: **SR90R**
 RK Road King series — Ex: **RK70J**

Simplified Schematics

EXPLANATION OF:

- Code (E)** — signifies that the radio is internally switched from receive to transmit by means of vacuum tubes or solid-state circuitry. Transceivers having electronic switching [Code (E)] require a Turner microphone that is internally wired for electronic switching. The following are some electronic-type microphones:
- mobile — JM+2/U, JM+3, RK50J, RK60J, RK70J, J+350, J450, etc.
 - desk — +2, +3, or Super Sidekick, etc.
- Code (R)** — signifies that the radio is internally switched from receive to transmit by an electro-magnetic device commonly called a relay. Transceivers having relay switching [Code (R)] require a Turner microphone that is internally wired for relay switching. The following are some relay-type microphones:
- mobile — M+2/U, M+3, RK50, RK60, RK70, +350, 450C, etc.
 - desk — +2, +3, or Super Sidekick, etc.
- Code (S)** — signifies that the radio is internally switched from receive to transmit by isolated switching, transferring B+ voltage from one circuit to the other. Therefore, this type transceiver **requires** one of the following:
- mobile — M+3special, M+3B, RK56, RK66, RK76, Expander 400, etc.
 - desk — CS-1, +3B, CS-3, Expander 500, etc.

ATTENTION

Six (6) wire microphones used for Code (E) or Code (R) radio.

If you have purchased a six-wire microphone and your transceiver is either Code (E) or Code (R), refer to the following chart and examples for proper hook-up:

Code (E) Conversion

Code (E) wiring	6-wire microphone equivalent
White	white
Black	blue
Red	black
Shield	shield & red
	yellow wire not used

Example:

Midland 13-830 — Code (E)

From	To
1-white (W)	1-white (W)
2-shield (S)	2-shield & red (S&R)
3-red (R)	3-black (Bk)
4-black (Bk)	4-blue (Bu)
	yellow (Y) not used

Code (R) Conversion

Code (R) wiring	6-wire microphone equivalent
White	white
Black	blue
Red	red
Shield	shield
	black & yellow not used

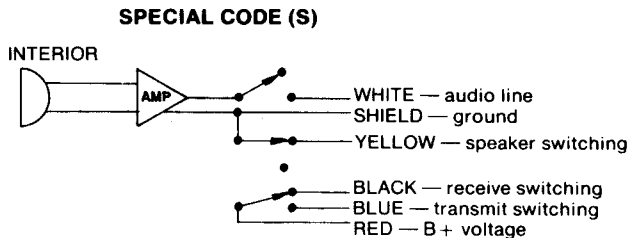
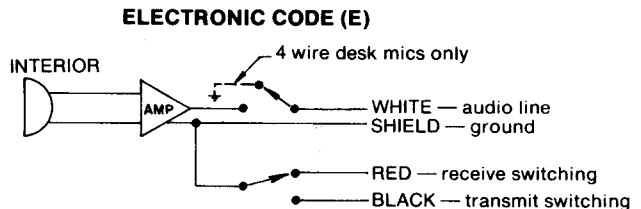
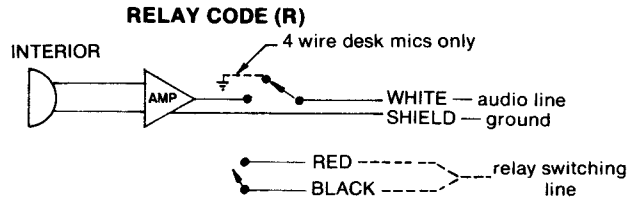
Example:

Cobra 28 — Code (R)

From	To
1-S	1-S
2-W	2-W
3-Bk	3-Bu
4-R	4-R
	Bk & Y not used

Note: When using six-wire microphones it would be best to connect the unused wires to the shield or ground wire.

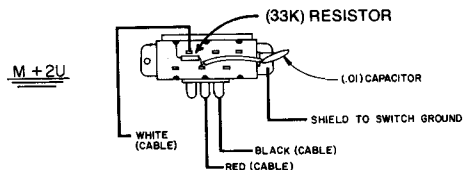
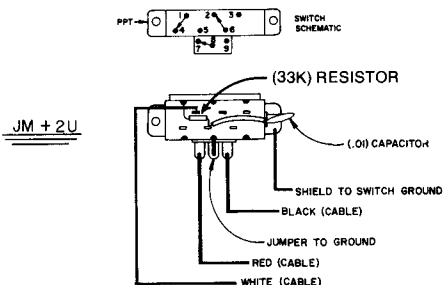
(ALL SWITCHES SHOWN IN "RECEIVE" POSITION)



THE DIFFERENCE IN INTERNAL WIRING FOR RELAY AND ELECTRONIC SWITCHING M+2/U, JM+2/U MOBILE MICROPHONES

The sketches below reflect the difference in the internal wiring of the M+2/U (RELAY SWITCHING) and the JM+2/U (ELECTRONIC SWITCHING). To convert from one to the other follow these simple instructions:

1. Remove the 4 screws in the rear housing holding the microphone together.
2. With the microphone lying face down, remove the rear housing to expose the switch.
3. Rewire the switch as necessary as shown on the sketches, and reassemble the microphone.



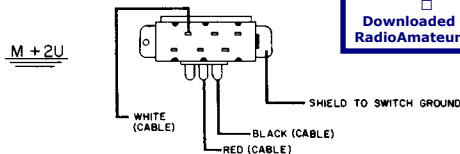
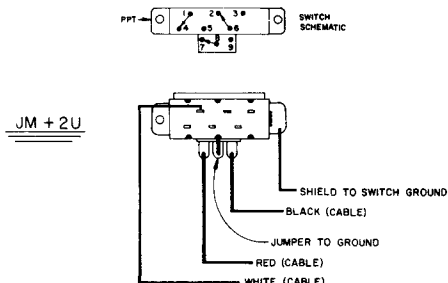
THE DIFFERENCE IN INTERNAL WIRING FOR RELAY AND ELECTRONIC SWITCHING NEW MODEL M+2/U, JM+2/U MOBILE MICROPHONES

The following sketches are diagrams of the difference in internal wiring of the new models, M+2/U (RELAY SWITCHING) and JM+2/U (ELECTRONIC SWITCHING). The new models have fewer components than the old style, as can be noted by the deleted capacitor and resistor from the switch block. Due to the advanced engineering of the new M+2/U, the output level has been increased to provide for plenty of "talk" power. This microphone began its production in Conrac's West German plant, but before long, it will be manufactured in the states.

To convert from relay to electronic switching follow these simple instructions:

1. Remove the 4 screws in the rear housing holding the microphone together.

2. With the microphone lying face down, remove the rear housing to expose the switch.
3. Rewire the switch as necessary as shown on sketches, and reassemble the microphone.



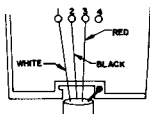
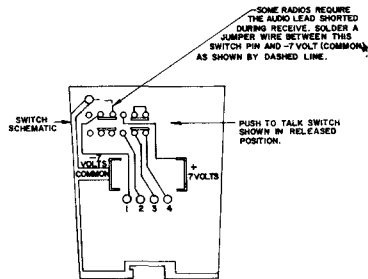
Scanned by J.E. Braun

Downloaded by RadioAmateur.EU

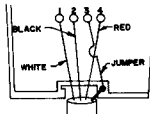
THE DIFFERENCE IN INTERNAL WIRING FOR RELAY AND ELECTRONIC SWITCHING M+3, JM+3, RK60, RK60J, RK70, RK70J MOBILE MICROPHONES

The sketches below reflect the differences in the internal wiring of the M+3, RK60, RK70 (RELAY SWITCHING) and the JM+3, RK60J, RK70J (ELECTRONIC SWITCHING). To convert from one to the other follow these simple instructions.

1. Unscrew the hanger button and remove the rear door.
2. Remove the two screws under the door holding the microphone together.
3. With the microphone lying face down, hold down on the cable and remove the rear housing by lifting it off the microphone from the bottom first. This will expose the four terminals to which the cable is wired.
4. Rewire the cable to the four terminals as necessary and reassemble the microphone.
5. When installing the rear housing, hook the top of the rear housing under the teeth on the top of the front housing and fold together.



M + 3, RK60, RK70



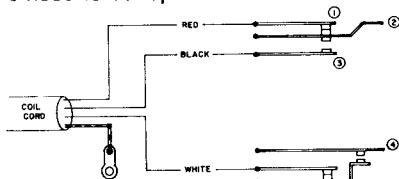
JM + 3, RK60J, RK70J

IN CASE OF DIFFICULTY

Squeal During Transmit — normally caused by RF energy entering the transceiver from the microphone's white audio wire. Generally the best remedy for this problem is to insert a 47 to 50 micro henry (uh) rf choke in series with the white audio lead in the microphone. If RF chokes are not available, a resistor of values from 2.7K ohms to 10K ohms, ¼ watt, in series with the white audio lead should suffice. Although, when resistors are used the microphone output will be reduced.

Squeal During First Portion Of Receive And Transmit In Desk Mics — normally caused by switch misadjustment in desk microphones. To remedy this, adjust the key line so that it will switch to transmit at the same time the audio circuitry in the desk microphone is turned on.

- Step 1: Remove the four screws that hold the bottom plate onto the microphone. This will expose the switches in the microphone for adjustment.
- Step 2: Bend contact #3 so that it will be closer to contact #2 (see switch diagram below).
- Step 3: Replace bottom plate on microphone.
- Step 4: Test the microphone with the radio by pushing down slowly on the push-to-talk bar. If the radio speaker squeals, steps 1-3 need to be repeated.



Excessive Battery Drain — may be caused by switch misadjustment in desk microphones. Adjustment may be attained by bending contact #4 up slightly to open battery circuit. Also a defective amplifier assembly or pinched wires in both mobile and desk microphones can cause battery drain.

Receiver Signal Reduced or Replaced By Squealing — most often caused by the shorted-to-ground white lead in +2, +3 and Super Sidekick desk microphones. Disconnect the white lead from the plug with the receiver in the receive mode. If the receive signal returns to normal, you should order one of the following switch kits:

- | Part # | Switch and installation instructions for |
|----------|--|
| B25475 | +2 microphone |
| B75255 | +3 microphone |
| B75255-1 | Super Sidekick microphone |

Send \$4.00 for each kit required, enclosing check or money order for payment to:

Turner Division of Telex
Attn: Small Part Sales
8601 N.E. Highway 6
Lincoln, Nebraska 68505

Radio Immediately Transmits When Microphone Is Plugged In — normally occurs in electronic switching radios and may usually be corrected by reversing the red and black leads, black and blue in 6-wire microphones.

TROUBLESHOOTING

If you feel that a microphone may be defective, it is advisable to check the following points before taking further action:

1. Battery — check for proper voltage.
2. Battery connector — make sure battery is making solid contact with the connector.
3. Plug wiring — check wiring instructions and resolder all connections making certain that none of the exposed portions of the wires can come in contact with any of the other wires or the case of the connector.
4. If possible, wire your microphone to a different radio or wire another microphone to your radio to check for a defective microphone.
5. If available, check the output of the microphone by using an oscilloscope (preferable) or a high impedance voltmeter. Check for the presence of an AC signal between the white wire and shield while whistling into the keyed microphone with the volume control at maximum. You should read approximately 1 volt RMS.
6. Microphones that sound hollow or too bassy can

often be fixed by placing a .01 micro farad (uf) disc capacitor between the white audio wire and the shield, or in series with the white wire inside of the microphone.

7. Complaints of Fuzzy Speech may be attributed to overmodulation, a defective modulator stage or defective microphone. Fuzzy speech caused by overmodulation may be eliminated by reducing power microphone gain setting.
8. At times it may appear that this wiring booklet is in error on a given wiring diagram. Although the possibility of error exists, many times we have found that the transceiver manufacturer has changed his wiring to something other than shown on the schematic. If this is the case, the proper wiring can be figured out by solving the switching of the stock microphone and applying the resultant information to the Turner microphone. See page 5 for simplified switching schmetic of Turner mics.
9. If after trying the above you feel that the microphone is definitely defective, please return the mic to our Repair Department, enclosing the back cover of this booklet with the appropriate information.

THE USE OF VOX WITH THE TURNER SUPER SIDE-KICK, SIDEKICK 100, +2, and +3 —

Voice operated relay (VOX) is a means in which the radio circuitry takes audio input from the microphone and keys the transmitter key line. In order for a VOX circuit to work, the key line must not have a ground connected to it during its operation unless the VOX circuitry puts the ground on the key line. Most microphones used with VOX operation have the interior tied directly into the audio circuit of the radio and the key bar on the microphone does not need to be depressed for audio to be fed into the radio. However, on our models of base microphones with transistor amplifiers, the key bar must be depressed in order to give power to the amplifier in the microphone. In order to connect the Turner base-type transistorized microphones you should do the following: Contact the Turner white lead to the audio input of the plug. Connect the black Turner wire to the key line on the plug. Connect the shield to the shell or ground on the plug. **Leave the red wire completely disconnected.**

VOX Operation — For VOX operation put the switch at the bottom of the Turner microphone in relay position, and lock the touch bar on. The VOX circuitry will now work as normal. After using VOX be sure to unkey the microphone as battery drain will result if left on.

For a Normal Push-to-Talk Operation — Put the switch at the bottom of the microphone in electronic position and microphone will act normally for push-to-talk.

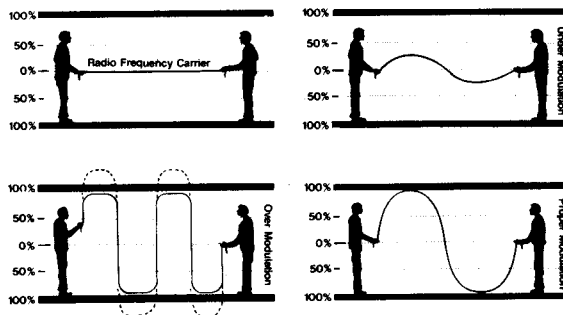
USE OF TURNER MICROPHONES

Turner Company manufactures two types of amplified microphones: the standard amplified microphone and a speech compressed microphone. In the use of a standard amplified microphone, the output will vary with distance between the mic and the sound source. However, the speech compressed mics maintain a relatively constant output with varying distances between the sound source and the mic. The CS-1, EX-400, EX-500, +3, +3B, M+3/special, M+3B, RK60/66 and RK70/76 are speech compressed models, while all other amplified microphones are of the standard type.

Amplified microphones cannot be used with any set requiring a carbon microphone without modification to the set. We do not recommend and do not assume any liability for such modification. Any attempt to use these microphones with a set of this type may result in damage to the microphone. We would recommend the Turner J+350 or +350 model microphone as they were designed primarily to work as transistorized replacement microphones in carbon microphone circuits.

SOME FACTS ABOUT AMPLIFIED MICROPHONES

If the microphone you have purchased is amplified, and you use it properly, you will noticeably improve your CB radio's clarity and EFFECTIVE range. The microphone will amplify the audio input to the radio, allowing you to use the microphone effectively from a comfortable distance as well as to create a higher AVERAGE modulation of the radio frequency (RF) carrier.



WHAT IS MODULATION?

Think of the radio frequency carrier as a rope held between two people. When you MODULATE a radio frequency carrier with your voice, you're moving the carrier in much the same manner that you would if you raised your arm up and down and made waves in the rope.

Just as it is possible to wave our imaginary rope with less than full force, it is possible to have a strong frequency carrier and still not have an intelligent message. The microphone that comes with a radio may not modulate or "move" the carrier enough to allow the radio to operate efficiently.

It is important to fully modulate for effective communications, but over-modulation is ineffective. Imagine conducting our rope experiment in a room with the ceiling representing the 100% modulation limit required by the FCC. See what happens when you raise your arm up and down too vigorously. With an over-modulated radio frequency carrier, severe distortion and cross channel splatter occurs.

ADJUSTING AN AMPLIFIED MICROPHONE FOR PROPER MODULATION

Begin transmitting with the microphone control near the low position. Ask other CB operators three to four miles away to check your signal strength and audio quality.

If you are told that your signal strength (S-meter reading) is good, but that audio intelligibility is weak, increase the microphone control slightly and ask for another audio check. Repeat the above procedure until told your transmission is breaking up or garbled. Reduce the microphone control setting slightly and repeat the audio check one more time. If audio quality is reported good on the last setting, the microphone has been properly set for optimum modulation and signal clarity. Later model CB radios may contain modulation — limiting circuitry which will not allow over modulation. Therefore, the transmission may not break up or sound garbled at the maximum gain setting.

ACSA CORP.

CB 700S, CBRI 805
Code (E)
1-S
2-W
3-Bk
4-R

AIMOR

CB7000
Code (R) 1-S
W to B1 or 2-W
R&S to Gnd 3-R
Bk to C102, 4-Bk
RL1

AIRCATTLE

Code (E)
1-R
2-Bk
3-W
4-S

ALARON

(B & B IMPORT)

B1025
Code (R)
1-W
2-R
3-Bk
4-S
B1050
Code (E)
1-Bk 1-S
2-R 2-W
3-W or 3-R
4-S 4-Bk
5-N/C

B1100
Code (R)
1-Bk
2-R
3-S
4-W

B1150
Code (R)
1-W 1-W
2-S 2-S&R
3-Bk or 3-Bk
4-N/C 4-N/C
5-R 5-N/C

B4600
Code (E)
1-S
2-W
3-Bk
4-R

B4700
Code (R)
1-W
2-S
3-Bk
4-R
5-N/C

ALLIED

A2567
Code (R)
1-W
2-R
3-Bk
4-S

ALPINE ELECTRONICS

BR640
Code (E)
1-W
2-S
3-Bk
4-R
5-
(jumper pins 4&5)

AMERICAN ELECTRONICS INC.

23 Plus
Code (R)
1-Bk
2-W
Sh-R&S
76-501 Spirit, 76-601 Freedom
Code (E)
1-Bk
2-R
3-S
4-W
5-N/C
6-N/C

A R A

CB7100
Code (E)
1-S
2-W
3-Bk
4-R

ARTHUR FULLMER CO.

2300, 2301, 2355
Code (E)
1-W
2-S
3-R
4-Bk

ASAHI

ACT 1914
Code (E)
1-W
2-S
3-R
4-Bk

ATLAS

210X
Code (R)
Rg-W
Tp-Bk
Se-R&S

AUDICOM 23

Model PT 23
Code (R) 1-S
W to B1 or 2-W
R&S to Gnd 3-R
Bk to Relay 1 4-Bk

AUDIOVOX

MCB 500
Code (S)
1-W
2-Y
3-Bk
4-R
5-Bu
6-S

MCB 1000
Code (R)
1-W
2-S&R
3-Bk
4-N/C
5-N/C

MCB 2000
Code (S)
1-W
2-N/C
3-Bk
4-R
5-Bu
6-S
Y not used

MCB 3000
Code (R)
1-W
2-N/C
3-R
4-S
5-Bk
6-N/C

AUTOMATIC RADIO

Plugs on all Automatic Radios must be fully assembled to be operational.

BCB1130
Code (R)
1-S
2-W
3-R
4-Bk

CBU2068
Code (E)
1-W
2-S
3-R
4-N/C
5-Bk

CBE2151
Code (E) Code (R)
1-W 1-W
2-Bk 2-Bk
3-S or 3-R
4-N/C 4-N/C
5-R 5-S

CBR2175
Code (E)
1-W
2-Bk
3-S&R
4-N/C
5-N/C
R may need to be on pin 5

CBH2265, CBL2270
Code (E)
1-S
2-W
3-Bk
4-R

BENJAMIN ELEC-TRONIC SOUND CO.

Concord 200
Code (R)
1-W
2-S&R
3-Bk
4-N/C
5-N/C

Concord 400
Code (E)
1-S
2-W
3-Bk
4-R

BLAUPUNKT

BCB5231
Code (E)
1-R
2-W
3-Bk
4-S

BOMAN-ASTROLINE

CB-515, CB-535, CB-555,
CB-710, CB-740,
CB-910, CB-930, CB-950
Code (E)

1-W
2-S
3-R
4-Bk

CB-750, CB-755
Code (R)
1-S
2-W
3-Bk
4-R

CB-770
Code (R)
1-W
2-S&R
3-N/C
4-Bk

CB-720, CB-720B

Code (E)
1-W
2-Bk
3-R
4-S

CBR-735

Code (R)
W to C129
S&R to Gnd
Bk to RL1

CBR-9700, CBR-9940

Code (E)
1-W
2-Bk
3-S
4-N/C
5-N/C

CBR-9900

Code (E)
1-W
2-Bk
3-S
4-N/C
5-R

CBR-9950

Code (E)
1-W
2-S
3-Bk
4-R
5-
jumper pins 4&5

BONSONIC

CB8
Code (E)
1-W
2-S
3-R
4-Bk

BROWNING

S-23 Series 2, 23S,
68T, Raven, FMF S9,
Golden Eagle Mark II,
Mark III, Eagle
Code (R)
1-W
2-Bk
Sh-R&S

May require modification of mobile mics to short white lead during receive. See page 9. Insert a 270K ohm resistor in series with the white lead.

Eaglette, Eaglette II consult factory.

Eaglette and Eaglette II require Sw.K.

LTD, Brownie, SST, SST 2,

Sabre, Baron
Code (R)

1-S
2-W
3-Bk
4-R

LTD, Sabre, SST 2 require jumper from pin 1 to 4

CADRE (AMPHENOL)

500, 500C, 510B, 515, 525

Code (R)
1-Bk
2-W
3-S
4-R
5-N/C

510A

Code (R)
1-S 1-Bk
2-Bk 2-W
3-N/C or 3-S
4-R 4-R
5-W 5-N/C

777

Code (R)
1-R
2-Bk
3-W
4-S

CARDON

Spitfire Mark II, Ventura

Code (R)
1-W
2-Bk
3-S
4-R

Spitfire, Satellite

Code (R)
1-S
2-W
3-Bk
4-R

Phantom

Code (R)
1-W
2-S&R
3-N/C
4-Bk

Tycoon CB 707

Code (R)
Wire color for color.

852 CB

Code (R)
1-W
2-S
3-R
4-N/C
5-Bk

Constellation, Vanguard

Code (R)
Rg-Bk
Tp-W
Sh-S&R

Command CB 727, Universe 747-

Code (R)
1-W
2-Bk
3-R
4-S

Apache, Astro

Code (E)
1-W
2-S
3-R
4-Bk

CHANNEL MASTER

CB6830, CB6832

Code (E)
1-R
2-W
3-Bk
4-S

CITI-FONE

CD11/6, CD11/12, 99/6, 99/12

Code (R)

The above models have wired-in microphones. The TURNER microphones should be wired color for color.

SS, CD-5, CD-6, CD-7

Code (R)
Rg-W
Tp-Bk
Sh-R&S

CITIZEN

Model M2, B524, M5

Code (E)

1-W
2-Bk
3-S
4-N/C
5-R
B524 requires Sw.K

CLARICON

Activator 30800, Privateer 30600

Code (E)

1-S
2-W
3-R
4-Bk
Base 30850
Code (E)
1-S
2-N/C
3-Bk
4-W
5-R

Pirate

Code (R)

1-N/C 1-N/C
2-N/C 2-W
3-R&S or 3-N/C
4-W 4-Bk
5-Bk 5-R

14-523

Code (R)

Wired color for color

30200

Code (E)

W-audio "hot"

S-Gnd

R-grounded in receive

Bk-grounded in transmit

RAIDER

Code (E)

1-W
2-S
3-R
4-Bk
Requires Sw.K

COBRA

B & K-Cobra Cam 88, Cobra 98

Code (R)

1-W

2-S

3-Bk

4-R

Jumper 2&4

— May require modification of mobile mics to short white lead during receive, see page 8.

Cobra V

Code (E)

Tur Original Mic
 Color/Part
W pre-amp
S Gnd
R output
 transformer
 speaker winding
Bk Transmitter
Sw.K required

Cobra 23, 27

Code (E)

Wire as original except reverse R&Bk.

Sw.K required

Cobra 24

Code (R)

Tur Original Mic
 Color/Part
W PA/CB switch
S&R Gnd
Bk relay coil
Sw.K required

Cobra 25, 28, 130, 131, 132,

135, 880,

85, 32 XLR, 138 XLR, 139 XLR

Code (R)

1-S

2-W

3-Bk

4-R

85 requires Sw.K

Cobra 19, 21, 26, 139, 29, 89,

29 XLR

Code (E)

1-S

2-W

3-Bk

4-R

Cobra 138

Code (R)

Sh-S&R

Rg-Bk

Tp-W

Cobra 6

Code (E)

Tur Original Mic
 Color/Part
R speaker output
 transformer (T10)
B to the circuit
 from diode (D8)
W to circuit from
 R-31 (10K resistor)
S to Gnd

COLT

290

Code (E)

1-W

2-S

3-R

4-Bk

Requires Sw.K

COMET

SFT-900

Code (E)

This set uses a mic plug having 4 unnumbered pins. When viewed from the rear, the arrangement can be loosely described as a "Y". Consider the pins to be numbered: Upper left-2, Upper right-3, Center-4, Bottom-1.

1-S

2-Bk

3-R

4-W

Sw.K required

COMEX

CCB770

Code (E)

1-W

2-N/C

3-N/C

4-R

5-Bk

6-S

COMMAND ELECTRONICS INC.

Satellite Super

Transmitter

Code (E)

1-S

2-R

3-Bk

4-W

The Star

Code (R)

1-S&R

2-W 2-N/C

3-Bk or 3-Bk

4-W

COMMANDER

750

Code (E)

1-Bk

2-S

3-W

4-R

Must use external speaker

COMMANDO

CC2300, CC2310, CC4040,

CC4086

Code (E)

1-W

2-S

3-R

4-Bk

2320, 2325

Code (R)

R&S to Gnd or 1-S

Bk to RL1 2-W

W to B1 3-R

4-Bk

2340, 2345

Code (S)

W to R63, C54

S&R to Gnd

Bk to C19, R8, C12

Y to Spkr Gnd

Bu to R83, D12

CC4050

Code (E)

1-R

2-S

3-N/C

4-W

5-Bk

CC4055

Code (S)

1-Y

2-R

3-S

4-W

5-Bk

6-Bu

COMMUNICATIONS**POWER INC.**

CP300, CP400
Code (R)
1-W
2-S
3-R
4-Bk

COMPUTING DEVICES

CDM-225
Code (E)
1-S
2-W
3-Bk
4-Gnd

CONTACT

CB-23 CH
Code (R)
1-W 1-Bk
2-R&S 2-R&S
3-N/C 3-N/C
4-Bk or 4-W
5-N/C 5-N/C
6-N/C 6-N/C

Contact 6
Code (E)
1-Bk
2-N/C
3-W
4-S
5-R

CORNELL-DUBILIER

Mark X
Code (R)
1-W
2-Bk
3-S&R
4-N/C

COURIER

Rebel 40, Conqueror 40D,
Caravelle 40D
Code (E)
1-R

2-W
3-Bk
4-S

R&S may need to be reversed

Spartan PLL40, Conqueror, Con-
queror II, Caravelle, Caravelle II,
Centurion, Spartan, Gladiator

Code (R)
Rg-Bk
Tp-W
Se-R&S

Cruiser

Code (E)	Code (E)	Code (R)
1-R	1-S	1-R
2-W	2-W	2-W
3-Bk or	3-Bk or	3-Bk
4-S	4-R	4-S

May require Sw.K

Classic II, Citation

Code (R)
1-S&R 1-Bk
2-W or 2-S&R
3-Bk 3-W

Ranger-23, Traveller II

Code (E)
1-R
2-Bk
3-W
4-S

Classic

Code (R)
1-Bk
2-N/C
3-W
4-R&S

TR-3, TR-6, TR-12

Code (R)
1-W
2-S&Bk
3-N/C
4-R

TR-5, Tradesman, Traveller

(USA)
Code (E)

The above units have a wired-in
microphone. Wire color for col-
or except reverse the red and
black leads.

Royale

Code (R)
1-R
2-Bk
3-W
4-S

23 Plus, Fleet 30B, Courier 23

Code (R)
1-N/C
2-Bk
3-W
4-R&S

Courier 1M

Please contact factory

Redball, Classic III

Code (E)
1-R
2-W
3-Bk
4-S

Rebel + 23

Code (E)
Tur Original Mic
Color/Part

R	purple
Bk	R
W	Y
S	chassis ground or where original shield went

Requires Sw.K

Courier Chief

Code (E)
1-S
2-R
3-Bk
4-W

Courier Chief 23

Code (E)
1-Bk
2-R
3-S
4-W

Comet 23

Code (R)
1-S
2-R
3-Bk
4-W

CRAIG

L101
Code (R)
1-N/C
2-W
3-S&R
4-N/C
5-Bk

L131

Code (R)
1-N/C
2-W
3-S
4-R
5-Bk

4101, 4102, 4103, 4104, 4201

Code (E)
1-N/C
2-W
3-S
4-R
5-Bk

DELCO

CBD10, CBD20, CB20A

Code (E)
1-W
2-S
3-R
4-Bk

DELTA TRONIX

D1325RF
Code (E)
1-W
2-S
3-R
4-Bk

DEMCO ELECTRONICS

T110A, Traveller, Satellite

Code (R)
1-S&R
2-W
3-Bk

Revelle

Code (R)
Rg-W
Tp-Bk
Sh-R&S

Revelle 23

Code (E)
W-mic audio
R-grounded in receive
Bk-grounded in transmit
S-Gnd

Super Satellite, Star

Code (E)
1-S
2-R
3-Bk
4-W

DRAKE

TR3, TR4, T4XB, T4XC

Code (R)
Rg-W
Tp-Bk
Se-R&S

EBINA

D1325RF
Code (E)
1-W
2-S
3-R
4-Bk

ECHO

99'er
Code (R)
W to Negative side of C129
Bk to top of relay RY-1
R&S to Gnd

Excellenz
Code (E)
1-R
2-Bk
3-W
4-S

E F JOHNSON

CAUTION: Avoid contact
between any metal microphone
case and the radio case

Viking I, Viking II

Code (E)
Wire color for color

Messenger I, Messenger III

Code (R)
Wire color for color

Messenger III 242-143, 323 New
Production
Code (R)

Tur Original Mic
Color/Part

W	W
Bk	Bu
R	R
S	Y, Bk, S

Messenger 100, 110, 123,
123GRS
Code (E)
Wire color for color, except re-
verse red and black.

Messenger 123A, 123B, 350,
125, 120, 120A, 323A, 121, 122,
123SJ, 191, 4120, 4140, 4145
Code (S)
Wire color for color

Messenger 124, M, 202, White
Face, Messenger II
Code (E)
1-W
2-R
3-Bk
4-S

Messenger 303, 600
Code (R)
1-W
2-R
3-Bk
4-S

Messenger 300, 320, 323, M
Code (R)
Wire color for color

Messenger 250, 4170, 4175
Code (S)
1-W
2-R
3-Bk
4-Y
5-Bu
Sh-S

352, 4740
Code (R)
1-W
2-Bk
3-N/C
4-N/C
5-R
Sh-S

Viking Ranger
Code (R)
1-W
2-N/C
Sh-S
Key Jack
Tp-Bk
Sh-R

223
Code (E)
1-W
2-R
3-Bk
4-S
5-N/C

351
Code (R)
1-S
2-W
3-Bk
4-R

Messenger 130, 132
Consult factory

E I C O

753, 770, 771, 772, 777, 779,
779A

Code (R)
1-Bk
2-W
Sh-R&S

7723
Code (E)
1-W
2-S
3-R
4-Bk

7923
Code (R)
Tur Original Mic
Color/Part
W (5) on schematic
(mic)
R RY side PTT on
schematic
Bk T9 side PTT on
schematic
S RY3 side of
microphone

Note: Check the input im-
pedance of your radio as some
E I C O models have very high
impedance and may not
perform well with Turner mics.

ELECTROPHONIC

CB700
Code (E)
1-W
2-S
3-R
4-Bk

ERIC

200
Code (E)
1-S
2-W
3-Bk
4-R

Scanned by
J.E. Braun

Downloaded by
RadioAmateur.EU

EVERSONIC

DK222
Code (R)
W to S4-1
R&S to Gnd
Bk to relay S4-2

1125
Code (E)
1-W
2-S
3-R
4-Bk

1280
Code (E)
1-W
2-S
3-Bk
4-R

ST22
Code (E)
1-W
2-S
3-R
4-N/C
5-Bk

HA23C
Code (R) Code (R)
1-W 1-W
2-Bk&S 2-S&R
3-R or 3-N/C
4-N/C 4-N/C
5-N/C 5-Bk

E W T

ECB14
Code (E)
1-W
2-S
3-Bk
4-N/C
5-R

FANNON

Fanfare 880DF, Caravelle 40D,
Conqueror 40D, Fanfare Rangler
40D, 125F, 182F, 184DF, 180,
185DF

Code (E)
1-R
2-W
3-Bk
4-S
S&R may have to be reversed

Fanfare 100F
Code (E)
1-S
2-W
3-Bk
4-R

Fanfare 120
Code (E)
Tur Original Mic
Color/Part
R Purple (lo side of
T10)

Bk R (C57 and
R59+)
W Y (L15)
S chassis ground
or where
original shield
went

M2300, XM2300

Code (E)
1-R
2-Bk
3-W
4-S
May require modification of
mobile mics to short white lead
during receive. See page 8.

SFT400, SFT500

Code (E)
1-W
2-S
3-Bk
4-N/C
5-R
Insert a 4.7K ohm resistor in
series with the microphone
white lead of desk mics.

SFT600

Code (R)
1-R&S
2-W
3-Bk

SFT800A

Code (E)
S-circuit ground
W-audio amp
R-output transformer speaker
winding
Bk-2-volt source

IC3000, IC5000

Code (R)
Tp-W
Sh-S
R&Bk not used

Fanfare 700

Code (R)
1-W
2-R&S
3-Bk
4-N/C
5-N/C
Requires Sw.K

Insert a 4.7K ohm resistor in
series with the microphone
white lead of desk micro-
phones.

SFT900

Code (E)
1-S
2-W
3-R
4-Bk
Requires Sw.K

Fanfare 100
 Turner Pin # Original
 mic color/part
 R 1 Purple
 Bk 3 R
 W 2 Y
 S 4 chassis
 ground or where
 original
 microphone
 shield went

Fanfare 880, 350F
 Code (R)
 Rg-Bk
 Tp-W
 Sh-R&S

Fanfare 330
 Code (R)
 1-W
 2-S
 3-Bk
 4-R

FIELDMASTER

FK CB002S
 Code (E)
 1-R
 2-Bk
 3-W
 4-S
 5-N/C

FK CB001A, FK CB005
 Code (E)
 1-R
 2-Bk
 3-W
 4-S

CB6832
 Code (E)
 1-R
 2-W
 3-Bk
 4-S

Micro Mini 6, 3, 23
 Code (S)
 1-W
 2-Y
 3-Bk
 4-R
 5-Bu
 6-S

TR-16
 Code (S)
 Consult Factory

TR-18M
 Code (R)
 1-W
 2-R&S
 3-Bk

TR-20
 Code (R)
 Rg-W
 Tp-Bk
 Sh-R&S

TR-17
 Code (R)
 1-W
 2-S
 3-Bk
 4-N/C
 5-R

FOX

MR21
 Code (R)
 1-W
 2-R&S
 3-N/C
 4-Bk

FULLCOM

2301
 Code (E)
 1-W
 2-S
 3-R
 4-Bk

GALAXY

GT550
 Code (R)
 Rg-W
 Tp-Bk
 Se-R&S

GEMTRONICS

GTX 3000
 Code (E)
 1-W
 2-Bk
 3-S
 4-N/C
 5-R

CTX230
 Code (E)
 1-W
 2-S
 3-Bk
 4-R
 Requires Sw.K

GTX 5000
 Code (R)
 1-W
 2-S
 3-Bk
 4-R
 Requires Sw.K

GTX-23, GTX-36, GTX-3323
 Code (E)

1-W
 2-S
 3-R
 4-Bk

GTX-2300
 Code (R)
 1-W
 2-Bk
 3-R&S
 4-N/C

GTX-2325
 Code (R)
 1-W
 2-Bk
 3-S
 4-R

GENERAL ELECTRIC CO.

Plugs on all GE Radios must be fully assembled to be operational.

3-5800, 5801, 5801A, 5809,
 5810, 5810A, 5810B, 5811,
 5811A, 5811B, 5818, 5871

Code (E)
 1-S
 2-N/C
 3-Bk
 4-W
 5-R
 Requires Sw.K

3-5801B, 5802, 5812A, 5819,
 5819A, 5821, 5821A, 5825A,
 5869

Code (E)
 1-W
 2-S
 3-R
 4-Bk
 Requires Sw.K

4ET7D1, 4ET7D2, 4ET7D3

Code (R)
 1-R&S
 2-W
 3-Bk
 4-N/C
 May require Sw.K

GENERAL MOTORS

GM23B, GM23M, GMCBD10A

Code (E)
 1-W
 2-S
 3-R
 4-Bk
 GM23B requires Sw.K

GM4120
 Code (S)
 J10-W
 J11-Y
 J12-S
 J13-Bu
 J14-R
 J15-Bk

GENERAL RADIOTELEPHONE

VS-4
 Not compatible with amplified
 mics.

MC-5
 Code (R)
 Rg-W
 Tp-R
 Sh-Bk&S

MC-7, MC-8, MC-6

Code (E)
 1-R
 2-Bk
 3-S
 4-W
 Disconnect 1.5K resistor (R44)
 inside radio on MC-7 and MC-8.

MC-9

Code (R)
 1-N/C
 2-Bk
 3-R&S
 4-W

MC11-A

Code (R)
 1-W
 2-Bk
 3-R&S
 4-N/C

SB-72

Code (R)
 1-W
 2-R&S
 3-Bk
 4-N/C

If hum exists, disconnect R-1
 (18K ohms) inside unit.

GLOBE ELECTRONICS

9000, 9001
 Code (R)
 1-W
 2-R
 3-Bk
 4-S

CB 100, 100A

Code (R)
 Tur Original Mic
 Color/Part
 W signal lead
 R&S Grounded
 Bk becomes
 grounded in
 transmit position

CB200

Code (R)
 1-W
 2-Bk
 Sh-R&S

President VIII

Code (R)
 Rg-W
 Tp-Bk
 Sh-R&S

GONSET

Communicator 4
 Code (R)
 Rg-W
 Tp-Bk
 Se-R&S

GRANADA

CB4
Code (E)
1-W 1-W
2-S 2-S
3-Bk or 3-R
4-N/C 4-Bk
5-R

CB6
Code (E) (E) (R)
1-S 1-S 1-S&R
2-N/C 2-W 2-W
3-W or 3-R or 3-N/C
4-R 4-Bk 4-Bk
5-N/C
6-Bk

CB7
Code (E) (E) (R)
1-S 1-R&S 1-S&R
2-W or 2-W or 2-W
3-R 3-N/C 3-N/C
4-Bk 4-Bk 4-Bk

CB27
Code (E)
1-R&S
2-W
3-N/C
4-Bk

Prominent, 1125
Code (E)
1-W
2-S
3-R
4-Bk

BCB1130
Code (R) Code (R)
W to B1 1-S
R&S to Gnd or 2-W
Bk to RL1 3-R
(relay) 4-Bk

FCB770
Code (S)
1-W
2-N/C
3-Bu
4-S
5-Bk
6-R

GREAT

GT418
Code (E)
1-S 1-R
2-W or 2-Bk
3-R 3-W
4-Bk 4-S
5-N/C

HALLICRAFTERS

CB20
Code (S)
W to W
S to S

Bk to Bu
R to Bk
Bu to R
Y-not used

HCM275
Code (S)
1-W
2-S
3-Bk
4-R
5-Bu
Y-not used

CB-12, CB-14
Code (R)
Wire color for color. Insert a
4.7K ohm resistor in series with
the white lead of desk mics.

CB-3, CB-3A
Code (R)
1-W
2-Bk
Sh-R&S

CB-5, CB-5A, CB-5 Mark II,
CB-10
Code (R)
Wire color for color

CB-21
Code (R)
Tur HAL
W R
S S
Bk W
R Bk

CB-7, CB-9, CB-17, CB-19
Code (E)
Same as original microphone, if
original mic number is
085-000234.

May require modification of
mobile mics to short white lead
during receive. See page 8.

CB-17, CB-19
Code (E)
Same as original mic except re-
verse R and Bk leads if original
mic number is 085-000276.

May require modification of
mobile mics short white lead
during receive. See page 8.

CB-24
Code (R)
Tur Original Mic
Color/Part
R&S common Gnd
W mic amp Q-9
Bk relay coil

CB-1
Code (R)
Pin-W
Sh-S
R&Bk-N/C

FPM300
Code (R)
Rg-W
Tp-Bk
Sh-R&S

HAMMERLUND

CB23
Code (R)
W to R
B to W
R&S to B&S

HANDIC

230
Code (S)
1-Y
2-R
3-S
4-W
5-Bk
6-Bu
235
Code (S)
W to orange
S to S
Bk to Bk
Bu to Violet
R to W
Y to R
Consult factory in case of dif-
ficulties

240
Code (S)
1-W
2-Bu
3-S
4-Y
5-Bk
6-R
2305
Code (R)
1-S 1-N/C
2-W or 2-W
3-R 3-Bk
4-Bk 4-R&S or

Code (E)
1-W
2-R
3-N/C
4-N/C
5-Bk
6-S

HEATH CO.

GW14, GW10, MW34
Code (R)
Tur Original Mic
Color/Part
W mic audio
Bk&R relay control
S Gnd

GW42
Code (R)
1-S
2-W

3-R
4-Bk
GW12, GW22, GW11A, GW11D,
GW32
Code (E)
Tur Original Mic
Color/Part
W mic audio
Bk grounded in
transmit
R grounded in re-
ceive
S Gnd

HW18-1, 18-2
Code (E)
Wire color for color

SB-101, SB-102
Code (R)
1-W
2-Bk
Sh-R&S

HITACHI

CM4850H
Code (E)
1-S
2-W
3-Bk
4-R

CM2410A
Code (E)
1-S
2-N/C
3-W
4-Bk
5-R

CM2430H, CM4800H, CM6700H
Code (E)
1-S
2-N/C
3-Bk
4-W
5-R
Require Sw.K

HY-GAIN

623, 623A, 623PR
Code (R)
Rg-W
Tp-Bk
Se-R&S
23+
Code (R)
1-W
2-Bk
3-R
4-S

670, 670A, 671, 671A
Code (S)
1-W
2-Bu
3-R
4-S
5-Bk
Y-not used

672, 672A, 673, 673A, 674,
674A

Code (R)

1-W
2-R&S
3-Bk
4-N/C

1A, 670B, 671B, 672B, 673B,
674B, 681, 682, 682A, 683,
2680, 2681, 2682, 2683, 2683A,
2701, 2702, 2703, 2705, 3077,
3078, 3084, 3087, 3107

Code (E)

1-W
2-Bk
3-S
4-N/C
5-R
Sw.K required

CB6830, CB6832

Code (E)

1-R
2-W
3-Bk
4-S

INTERNATIONAL CRYSTAL MFG.

50A-1, 50AN, 59, 100A, 440,
460, CTZ-880

Code (R)

1-W
2-S
3-Bk
4-R
Jumper 2&4

MO-23

Code (R)

1-Bk
2-R&S
3-W
4-N/C

CTZ-50

Code (R)

1-W
2-S
3-N/C
4-Bk
5-jumper to pin 2

I T T

CB2300M

Code (S)

1-W
2-Y
3-Bk
4-R
5-Bu
6-S

CB4000M

Code (E)

1-S
2-W
3-Bk
4-R

JANA

KJ-CB-32-MK4

Code (R)

Rg-W
Tp-R
Se-S&Bk
R&Bk may need to be reversed

KJSSB-100

Code (R)

1-Bk
2-R&S
3-W
4-N/C
5-N/C

BK & W may need to be re-versed.

J C PENNEY CO.

985-6060 Pinto 23B, 981-6051

Golden Pinto

Code (R)

1-R&S
2-W
3-Bk

981-6051, 981-6220

Code (E)

1-S&R
2-W
3-Bk
4-N/C

See note on 6212A

981-6220, 981-6235, 981-6213,
981-6210A, 981-6230,
981-6212, 981-6212A,
981-0607, 981-6236, 981-6237,
981-6214, 981-6218, 981-6237A

Code (E)

1-S
2-W
3-Bk
4-R

981-6075 Pinto SSB

Code (E)

1-R
2-W
3-Bk
4-S

981-6200

Code (E)

Turner..... Original Mic
Color/Part

W W
S S
R R
Bk Green

Insert a 4.7K ohm resistor in series with white lead of desk mics.

985-6050 Pinto 23

Code (R)

1-S&R
2-Bk
3-W

Insert a 4.7K ohm resistor in series with the white lead of desk mics.

985-6050 Pinto Jr.

Code (R)

1-Bk
2-W
3-R&S

981-6240, 981-6240A, 981-6241

Code (R)

1-S
2-W
3-Bk
4-R

981-6211A

Code (R)

1-W
2-R&S
3-Bk
4-N/C

1-R&S
or 2-W
3-N/C
4-Bk

981-6201

Code (R)

1-W
2-S&R
3-Bk
4-N/C

If wired in, color for color, or

Code (E)

P14-S
P15-W
P16-R
P17-Bk

981-6217

Code (E)

1-W
2-S
3-Bk
4-R

981-6217B

Code (E)

1-W
2-S
3-Bk
4-R
5-N/C
6-N/C

6203

Code (E)

1-S
2-W
3-Bk
4-R
5-N/C

6210

Code (E)

1-W
2-S
3-R
4-Bk

6212A

Code (E)

1-S&R
2-W
3-Bk
4-N/C

Some model 6051 and 6220 radios may wire like the above

JET SOUNDS

CB7000

Code (R)

1-W
2-R
3-Bk
4-S

CB7150

Code (E)

1-W
2-Bk
3-R
4-S

J I L CORP. OF AMERICA

Combo 23, JN852CB, JN606CB

Code (R)

1-W
2-S
3-R
4-N/C
5-Bk

M3, M5, B524

Code (E)

1-W
2-Bk
3-S
4-N/C
5-R

KALIMAR INTERNATIONAL CORP.

K740

Code (E)

1-S
2-W
3-Bk
4-R

K747

Code (R)

1-S
W to B1 or 2-W
Bk to relay 3-R
S&R to Gnd 4-Bk

KENWOOD

TS520, TS900

Code (R)

1-W
2-R
3-Bk
4-S

KNIGHT (Allied Radio)

KM2590

Code (E)

W to W
R to Bk speaker transformer
S to Bk Gnd
Bk to R

KOLTEK

Code (R)
1-S
2-W
3-R
4-Bk

KRACO ENTERPRISES INC.

KCB2310, 2320, 2320A, 2330, 2330A, 2330B, 2340, 2345, 2355, 4010, 4020, 4030, 4040, 4045, 4088

Code (E)
1-W
2-S
3-R
4-Bk
Sw.K required

1307
Code (S)

1-W
2-Y
3-Bk
4-R
5-Bu
6-S

1401
Code (R)

1-S
2-W
3-R
4-Bk

1300
Code (E)
W to L15
S to Gnd
Bk to C57
R to T10

2370
Code (R)

1-B
2-N/C
3-R&S
4-N/C
5-W
6-N/C

2390
Code (R)

1-W
2-S&R
3-Bk
4-N/C
5-N/C

4003, 4004
Code (E)

1-W
2-S
3-R
4-Bk
5-N/C

4075
Code (E)
Tur to Kra
W to Y
R to Yellow/green
S to S
Bk to orange

KRIS

23+
Code (R)
1-W
2-Bk
3-S
4-R
Insert .01 mfd. capacitor in series with the white lead for desk mics.

T-23, 99'er — Wired-in mic
Code (R)
Turner to Kris
W-negative side of C129
Bk-top of relay Ry-1
R&S-Gnd

Vega
Code (R)
Turner..... Original Mic
Color/Part
S..... S
W..... green or Y
R..... R
Bk..... Bu or purple

XL-23, XL-23A

Code (R)
1-W
2-S&R
3-Bk
4-N/C
See Victor 1 for alternate wiring.

XL-70
Code (R)

1-W
2-Bk
3-S
4-R
Pins 3 and 4 may be reversed

Victor I, Victor II, Valiant, Ventura, XL25, XL30, XL40, XL45, XL50

Code (E)
1-W
2-S
3-Bk
4-R
22K ohm resistor may be needed in series with white lead for desk mics.

KRYPTON-BETA

ACT1914, ACT2000

Code (E)
1-W
2-S
3-R
4-Bk

KYODO-SAWTRON

Sawtron 770, 790
Code (R)
1-S
2-W
3-Bk
4-R

LAFAYETTE

Telsat 1023, Micro 66
Code (R)
1-W
2-R
3-Bk
4-S
5-N/C
S&R reversed on some 1023 models
Telsat SSB75, Micro 223, HB640, HB650, HB740, HB750, HB940, HB950, Telsat 1050, Telsat 1140, SSB100
Code (E)
1-W
2-Bk
3-S
4-N/C
5-R
If the above does not work, use the following:

Publicom 1, SSB80, SSB100, SSB120, SSB140, HB95, HB540, HB550, HB640, Telsat 1000, Micro 723, 923, Questor Mark I

Code (S)
1-W
2-Bu
3-R
4-S
5-Bk
Y-not used

Comstat 35
Code (R)

1-W
2-R
3-Bk
4-S

Com-phone Mark II
Code (R)

1-W
2-R
3-S
4-Bk
5-N/C

HB-700

Code (S)
Tur..... Original Mic
Color/part
Y&S..... S or Bk
W..... R
R..... W
Bk..... green or Bk
Bu..... Bu

HB-400
Code (E)
1-W
2-Bk
3-R
4-S
or, wire color for color

HA-450, HA-750, HB-555, HB-23A, HB-425, HB-500A, HB-501, HB-502, HB-525A, B, C, D, E, F, HB-600A, HB-625A, HE-20D, HE-20T, Telesat: 23, 50, SSB-25, 150, 920, 924, SSB-50, Micro 12, 23, 925, SSB-50A, 925

Note: These sets use a mic plug having 4 un-numbered pins. When viewed from the rear the arrangement can be loosely described as a "Y". Consider the pins to be numbered: upper left - 2, upper right - 3, center - 4, bottom - 1

Code (R)
1-Bk
2-R
3-S
4-W
Occasionally a jumper is required between Pins 2 and 3.

HB-444, Comstat 19, Comstat 23, Mark V, Mark VI, Comstat 35
Code (E)
1-W
2-Bk
3-R
4-S

Occasionally a jumper is required between Pins 3 and 4.

Comstat 25A, B
Code (R)

1-W
2-Bk
3-R
4-S
25A may be Code (E)

HA-460
Code (R)
1-W
2-Bk
3-N/C
4-R&S

May require modification of mobile mics to short white lead during receive. See page 8.

HB-111, HB-200, HB-222, HE20, HE20A, WX, AWX, B, C, HE-43C
Code (R)
1-Bk
2-R
3-W
4-S
5-N/C

Com-Phone 23

Code (R)
 1-W
 2-Bk
 3-N/C
 4-S&R
 5-N/C

Comstat 9, HB-115

Code (E)
 1-R
 2-N/C
 3-W
 4-S
 5-Bk

HE-15A, HE-15B

Code (R)
 1-N/C
 2 & 4-S
 3-W
 5-N/C

HE-90, HB-333, Some HE-20

Code (E)
 1-Bk
 2-N/C
 3-W
 4-S
 5-R

HE-15, HE-16, HE-18

Code (R)
 center pin-W
 Sh-S
 R&Bk-N/C

LAKE

336
 Code (S)
 W to R63 & C54
 R&S to Gnd
 Y to T2
 Bu to D12
 Bk to C12, C19

GT418

Code (E)
 1-S
 2-W
 3-R
 4-Bk
 5-N/C

523, 1125, 1325

Code (E)
 1-W
 2-S
 3-R
 4-Bk

ME805, 806

Code (E)
 1-W
 2-Bk
 3-R
 4-S

LEAR JET

CB1
 Code (S)
 1-Y
 2-S
 3-R
 4-W
 5-Bk
 6-Bu

MARS RADIO CORP.

M353, M358
 Code (S)
 W to R63, C54
 R&S to Gnd
 Y to T2
 Bu to D12
 Bk to C12, C19

Con400, M374

Code (E)
 1-R
 2-S
 3-N/C
 4-W
 5-Bk

Con450, M368, M375

Code (S)
 1-Y
 2-R
 3-S
 4-W
 5-Bk
 6-Bu

MARK

Invader
 Code (R)
 Tp-Bk
 Rg-W
 Sh-R&S

MASON

CB23
 Code (E)
 1-W
 2-S
 3-R
 4-Bk

MECTRON

ME400, ME401A, ME402
 Code (E)
 1-W
 2-S
 3-Bk
 4-R

MEDALLION

63-200, 63-240
 Code (E)
 1-W
 2-S
 3-Bk
 4-R
 5-

jumper pin 4 to 5

MEISEI

C7510
 Code (E)
 1-W
 2-S
 3-R
 4-Bk

MERITON

RS5111
 Code (E)
 1-R
 2-Bk
 3-W
 4-S

MICRO 23

MS24
 Code (E)
 1-W
 2-S
 3-Bk
 4-N/C
 5-R

MIDLAND

13-830, 852, 853, 857, 857B,
 858, 862, 862B, 863B, 866, 867,
 879B, 882B, 882C, 892, 976
 77-825, 830, 853, 857, 882,
 Code (E)
 1-W
 2-S
 3-R
 4-Bk
 Sw.K required
 13-888, 13-888B

77-888
 Code (S)
 1-W
 2-R
 3-Bu
 4-Bk
 5-S
 6-N/C
 Y not used

13-863, 881B, 887, 893, 895,
 898, 898B
 Code (R)
 1-W
 2-R&S
 3-N/C
 4-Bk
 Some models require Bk on pin
 3

77-883
 Code (E)
 1-W
 2-S
 3-Bk
 4-R
 5-N/C
 6-N/C

13-884, 861

77-861
 Code (E)
 1-W
 2-S
 3-R
 4-Bk
 5-N/C
 Sw.K required
 May require external speaker
 13-845, 870B, 870C, 870D, 872,
 873, 874, 875, 876, 877, 878,
 880, 881, 885, 890, 891

Code (R)

Rg-Bk
 Tp-W
 Se-R&S

13-883, 13-883B

Code (E)
 1-W 1-W
 2-S 2-Bk
 3-Bk 3-N/C
 4-R or 4-S
 5-N/C 5-R
 6-N/C

13-886

Code (E)

1-W
 2-Bk
 3-S
 4-N/C
 5-R
 Sw.K required
 Hand set must be off hook

13-864, 13-869, 13-879

Code (E)
 1-W
 2-S
 3-Bk
 4-R

Insert a 4.7K ohm resistor in
 series with the microphone
 white lead of desk mics for
 13-864, 13-879.

13-865 & 13-868

Code (R)
 Tp-Bk
 Rg-W
 Sh-R&S

**13-869, 13-854, 13-801, with
wired-in mic**

Code (E)
 Tur Original Mic
 Color/Part
 W R
 R Bk
 Bk W
 S S

**13-130, 13-133B, C, E, 13-720,
13-790**

Code (R)
 W-Tp
 S-Sh
 R&Bk-N/C or Sh

13-150
Code (E)
Tur Original Mic
Color/Part
W audio amp thru
relay contacts
Bk relay coil
R 12.6 volt bus
S chassis Gnd

13-160 & 13-855
Code (E)
Color for color except reverse
R&Bk leads.

13-860
Code (R)
1-W
2-R&S
3-Bk

13-894, 13-896
Code (S)
1-W
2-S
3-Bu
4-R
5-Bk
Y-not used

13-882
Code (S)
1-W
2-Bu
3-R
4-S
5-Bk
Y-not used

MIDSTATE

Cub II MT7500
Code (E)
1-S
2-W
3-Bk
4-R

MONTGOMERY WARD

Gen 702A, Airline 774
Code (R)
1-W
2-S&R
3-N/C
4-Bk

MOTOROLA INC.

CB1124, 1125
Code (E)
1-Bk
2-R
3-S
4-W
Mocat 2020, 4020
Code (E)
1-Green
2-W
3-Bk
4-R
Use J + 350,

NUVOX

5010
Code (R)
1-W 1-W 1-W
2-S or 2-R&S or 2-R
3-Bk 3-Bk 3-S
4-R 4-Bk
TC5020
Code (S)
1-W
2-Y
3-Bk
4-R
5-Bu
6-S
7000
Code (R)
1-W
2-R
3-S
4-Bk
Pins 3 & 4 are tied together in-
side the radio

OLSON

409
Code (R)
1-W
2-S&R
3-BK
4-N/C
5-N/C

PACE

8010, 8015
Code (R)
1-Bk
2-N/C
3-S&R
4-W
8010A, 8015A, 8015B
Code (E)
1-Bk
2-S&R
3-N/C
4-W
Bl-3100, 113, 144, 145, 161,
162, 166, 1000B, 1000M, 8041,
8046
Code (R)
1-W
2-S&R
3-N/C
4-Bk
All require Sw.K except the 166
CB76, 2300C, 2300CA, DX2300B
Code (E)
1-Bk
2-R
3-S
4-W
Sw.K required
Desk mics on the DX2300B are
not recommended.

Bl-35
Code (R)
1-R
2-Bk
3-S
4-W

Bl2000-35
Code (R)
W-connect to RFC5 and R36
junction
S-audio and transmit Gnd
R - Ryl
Bk - Rx Gnd
I, II, II-S, 100, 200, +23, 2300

Early Model
Code (E)
Tur Original Mic
Color/Part
W volume control
and/or via
PA/CB switch
Bk relay coil and/or
via PA/CB
switch
R receiver Gnd
S transmitter Gnd
Sw.K required

5000
Code (R)
6-R
7-S
8-W
9-Bk

TA2300, TA2300B
Code (E)
1-W
2-S
3-R
4-Bk

2376
Code (E)
Tur Original Mic
Color/Part
W audio amp
S chassis Gnd
R circuit Gnd
Bk relay coil
Sw.K required

Auto Mate
Special switching — consult
factory

Side Talk
Code (R)
1-W
2-S
3-R
4-Bk

10-2
Code (R)
R&S-Gnd
W-connect to R44
Bk-connect to Gnd contact point
on relay

100-S, 123A, 123, 133, 100-
ASA, 143
Code (R)
1-Bk
2-R&S
4-W
3, 5, & 6-N/C
100S, 123A, 133, 143 require
Sw.K

143, B1-120
Code (R)
1-Bk
2-S&R
3-N/C
4-W
2376A, B, 223-Wired-in
Microphone
Code (R)
Tur Original Mic
Color/Part

W W
Bk R
R Bk
S S
223 requires Sw.K
Some models 2376A require
Code (E) switching

1023, Side Talk 1023B
Code (R)
W-Tp
Bk-Rg
R&S-Sh

2300
Code (E)
(Five Pin)
1-N/C
2-Bk
3-R
4-S
5-W

(Four Pin)
1-Bk
2-R
3-S
4-W
Some model Pace 4-pin con-
nections, the R&Bk wires must
be reversed.

Pace 130
Code (R)
1-W
2-S&R
3-N/C
4-Bk

In some cases reverse Bk&W.

PAL ELECTRONICS

Roadrunner Series, Coyote

Code (R)

1-W

2-Bk

3-R

4-S

In some cases 3 and 4 need to be jumped

PALOMAR

Digicom 100

Code (R)

1-W

2-Bk&S

3-R

In some cases pins 2 and 3 need to be reversed.

Skipper 71, 71B, 73

Code (R)

Bk-Tp

W-Rg

R&S-Sh

21, 41, 49, 4100

Code (E)

1-S

2-W

3-Bk

4-R

21, 41, 49, 4100

PANASONIC

2300, RJ3200

Code (E)

1-R

2-W

3-Bk

4-S

Sw.K required

See "Squeal during transmit" if need be

RJ3050, 3100, 3150, 3250

Code (E)

1-W

2-S

3-Bk

4-R

5-N/C

CR-B1717EU, 4700, 4701, 4737,

4747, 4748

Code (E)

1-W

2-Bk

3-S

4-N/C

5-R

PEARCE SIMPSON

Simba, Cheetah, Bengal

Code (R)

1-Bk

2-W

3-R&S

10K ohm 1/4 watt resistor required in series with white lead when using desk mics.

Following are older models of Simba, Cheetah and Bengal

Bearcat 23, Bearcat 23B, Tiger

23, Cougar, Simba SSB, Cheetah

SSB, Panther SSB, Bengal SSB,

Cougar 23, Simba, Cheetah,

Director 23

Code (R)

1-W

2-R&S

3-Bk

Insert 10K ohm resistor in series with white lead for desk mics.

Tiger 23B, Tiger 23C, Cougar

23B, Bobcat 23C, Bearcat 23C,

Super Lynx, Tiger 40A, Bobcat

23E, Tiger Mark IV, Puma 23C,

Lynx, Puma, Tiger Mark II

Code (E)

1-W

2-S

3-R

4-Bk

For Bearcat 23C insert 10K ohm resistor in series with white lead for desk mics.

Lynx, Puma, Tiger 40A require

Sw.K

Tomcat 23, Tomcat

Code (E)

Tur Original Mic

Color/Part

S S

R violet

W Y

Bk R

Code (E)

1-W

2-S

3-R

4-Bk

5-N/C

6-R

7-S

8-Bk

9-R

10-S

11-Bk

12-R

13-S

14-Bk

15-R

16-S

17-Bk

18-R

19-S

20-Bk

21-R

22-S

23-Bk

24-R

25-S

26-Bk

27-R

28-S

29-Bk

30-R

31-S

32-Bk

33-R

34-S

35-Bk

2301

Code (E) Wired-in mic

Wire color for color except reverse R&Bk

2302, Pussycat

Code (E)

1-S

2-W

3-R

4-Bk

Alleycat 23

Code (E)

Tur Original Mic

Color/Part

R violet

Bk R

W Y with Bk cover

S S

Bobcat 23-D

Code (E)

1-Bk

2-W

3-R

4-S

Wildcat II

Code (S)

1-Bu

2-Bk

3-Y

4-S

5-W

6-R

See M+3 Special data sheet or

call factory for wiring change

inside mic.

Panther, Companion IV

Code (S) Only Mobile, six-wire

mics will function with this

radio.

Tur Original Mic

Color/Part

Bu R

R Bk

Bk orange

W W

Y Y

S green

Lion

Code (E)

1-R

2-W

3-S

4-Bk

Puma 23B

Code (E)

1-Bk

2-R

3-S

4-W

Pirate

Code (R)

1-N/C 1-N/C

2-N/C 2-W

3-R&S or 3-N/C

4-W 4-Bk

5-Bk 5-R&S

Tomcat 23B

Code (S)

Tur P/S

Bu R

R Violet

Bk W

W Y

S S

PIONEER ELECTRONICS CORP.

GT1100, GT6600

Code (E)

1-W

2-S

3-Bk

4-R

5-

jumper 4 & 5

POLYCOM

Senior 23

Code (E)

1-W

2-S

3-Bk

4-R

5-

PONY

CB-FTBST

Code (R)

1-W

2-S

3-Bk

4-N/C

5-R

CB78

Code (E)

1-W

2-S

3-R

4-Bk

POWER

CB2300

Code (R)

1-S

W to B1 or 2-W

Bk to relay 3-R

R&S to Gnd 4-Bk

PRECOR

Code (E)

1-W

2-S

3-R

4-Bk

PRESIDENT

Dwight D., Grant, Honest Abe,
John Q.,
Teddy R., Washington, Zachary
T.

Code (E)

1-S

2-W

3-Bk

4-R

Add 4.7K ohm resistor in series
with the white lead.

PROMINENT

MS24

Code (E)

1-W

2-S

3-Bk

4-N/C

5-R

RANDIX 555

Code (R)

W to R81

R&S to Gnd

Bk to RL1

RAIDER

4020

Code (E)

1-W

2-S

3-R

4-Bk

RAY JEFFERSON

CB805

Code (R)

W to B1 or 2-W

S&R to Gnd 3-R

Bk to relay 4-Bk

RL1

CB840

Code (E)

1-W

2-S

3-R

4-Bk

5-N/C

CB711

Code (E)

Tur RJ

R Bk or violet

Bk W or R

W R or Y

S S

CB705

Code (E)

1-W

2-S

3-Bk

4-R

CB905

Code (R)

W-Rg

Bk-Tp

R&S-Sh

R C A

Mark VIII

Code (E)

Wire color for color

Mark IX (010)

Code (E)

1-R

2-S

3-W

4-Bk

14T100, 14T200, 14T260,

14T270, 14T275, 14T300,

14T301, 14T302, 14T303,

14T304, 14T305, 14T400

Code (E)

1-W

2-S

3-R

4-Bk

Sw.K required

REALISTIC

Plugs on some Realistic radios
must be fully assembled to be
operational.

TRC-8D

Code (E)

1-Bk

2-R

3-W

4-S

TRC-9, TRC-9A, TRC-11

Code (S)

Consult Factory

TRC-47, TRC-48, TRC-49,

TRC-57

Code (R)

1-S&R

2-N/C

3-Bk

4-W

5-N/C

TRC-50/Mini 23, TRC-24A,

TRC-23C, TRC-30, TRC-55,

TRC-24B, TRC-24C, TRC-30A,

TRC-52, TRC-68, TRC-200,

TRC-67, TRC-152, TRC-56,

TRC-452

Code (E)

1-S

2-N/C

3-Bk

4-W

5-R

On some models TRC-24A, pins
2 and 3 should be reversed. On
TRC-30A and TRC-30 the
microphone plug must be as-
sembled before use.
Speaker switch must be in
"both" position for model 56.

TRC-46

Code (R)

1-R&S

3-Bk

4-W

jumper 2 & 5

TRC-28, TRC-44, TRC-66,

TRC-88, TRC-99, TRC-100,

TRC-12, TRC-44B, TRC-14,

The above radios are Walkie

Talkie and we do not recom-
mend using amplified mics.

TRC-18, TRC-X20, TRC-X23,

TRC-X20A

Code (R)

1-S

2-W

3-Bk

4-R

TRC-24

Code (R)

1-W

2-R&S

3-Bk

Sw.K required

Insert 10K ohm resistor in
series with the white lead for
desk mics.

Americana 23+

Code (R)

1-Bk

2-W

Sh-R&S

May require modification of
mobile mics to short white lead
during receive. See page 8.

TRC-23B, TRC-40

Code (R)

1-W

2-R&S

3-Bk

4, 5-N/C

Requires 22K ohm resistor in
series with white lead for desk
mics.

TRC-29

Code (R)

1-W

2-S&R

3-Bk

4, 5-N/C

4-N/C

5-Bk

TRC-5

Code (E)

Wire color for color

TRC-50B/Mini 23B

Code (E)

Wired-in microphone. Wire col-
or for color except reverse R
and Bk.

TRC-10

Code (S)

1-S&R

2-Y

3-Bu

4-W

5-Bk

REGENCY

CB501

Code (E)

1-N/C

2-S

3-Bk

4-W

5-R

CR240, CR430, CR485, CR486

Code (E)

1-W

2-S

3-R

4-Bk

Imperial II, Romper, Range Gain,

Range Gain II, Range Gain Dou-

ble Sideband

Code (R)

1-W

2-R

3-Bk

4-S

Ranger CB-270

Code (R)

Tur Original Mic
Color/Part

W relay contacts

Bk relay coil

R&S line

Caution: Avoid contact between
any metal mic cases and radio
chassis.

CB-283, 500

Consult factory for mic
modification information. After
modification, connect as
original mic.

CB-27, CB-27-6/12

Code (R)

Tur Original Mic
Color/Part

W thru 10K resistor
to Pin #7 of
6BE6

R&S chassis Gnd

Bk relay coil

Formula 23, Sprint 23

Code (R)

1-W
2-S
3-Bk
4-R

Insert 10K ohm resistor in series with the white lead of desk mics. In some cases 1 & 2 may be reversed.

GT-523

Code (E)

Wire color for color except Bk wire and S must be reversed.

Spring Model 23 II, CR-185, CR-142, CR-230

Code (E)

1-W
2-S
3-Bk
4-R

Some models must have red and black reversed.

CR-123B

Code (R)

1-W 1-Bk
2-R&S or 2-W
3-Bk 3-R&S**CR-186, CR-202**

Code (E)

Tur Original Mic
Color/Part
W R
Bk Bk
R purple
S S**BTL-301, 304**

Code (R)

1-S&Bk
2-R
3-N/C
4-W**HR-2MS, CR-123**

Code (R)

Tp-W
Rg-Bk
Sh-R&S**ROBERTS****RCB10, RCB50**

Code (R)

1-S&R
2-W
3-N/C
4-Bk**RCB70**

Code (E)

1-W
2-N/C
3-N/C
4-R
5-Bk
6-S**RCB470A**

Code (S)

1-W
2-N/C
3-Bu
4-S
5-Bk
6-R

Y not used

ROBYN**WV123A**

Code (S)

1-Y
2-Bu&S
3-R
4-W
5-N/C
Bk not used**BB123, TR123C, GT7C, TR123B**
(4 pin)

Code (R)

1-W 1-W
2-R&S or 2-Bk or 2-Bk
3-N/C 3-S 3-R
4-Bk 4-R 4-S

Last two wiring listings are for 123B only.

TR123B (6-pin), TR123

Code (R)

1-W
2-Bk
5-R&S
2, 3, 6-N/C
Sw.K required for TR123B**J123**

Code (R)

Tur Orig. mic col-
or/part
R&S Circuit Gnd
W PA switch &
volume
Bk Relay coil**SS747B**

Code (R)

1-W
2-Bk
3-N/C
4-R&S**XL1, XL2, SX101, SX102B, SX102D, GT7, GT7B, K123, T123**

Code (R)

1-W
2-S
3-Bk
4-R**LB23, LB23A, SX007, WV23, WV23A, DG30**

Code (E)

1-W
2-S
3-Bk
4-R

Sw.K required

T123, Range Gainer

Code (R)

1-S
2-W
3-Bk
4-R**ROMAR****CB-7000**

Code (E)

1-W
2-Bk
3-S
4-R**ACT-1914**

Code (E)

1-W
2-S
3-R
4-Bk**ROSS****CB-1000**

Code (E)

W-R82 1-W
R-Speaker or 2-S
Bk-R76 3-Bk
S-R79 4-R**ROYAL****M-336**

Code (S)

W to R63 and C54
R&S to Gnd
Y to T2
Bu to D12
Bk to C12, C19**ROYCE**

1-614

Code (E) Code (R)

1-W 1-Bk
2-S or 2-N/C
3-Bk 3-R&S
4-R 4-N/C
5-W
6-N/C

Sw.K required

1-600, 1-600A, 1-600B, 1-620,
1-621, 1-612, 1-653B, 1-650,
1-648

Code (E)

1-W
2-S
3-Bk
4-R

1-612 requires Sw.K

1-601, 1-602, 1-602A, 1-603,
1-605A, 1-606, 1-610, 1-624,
1-625, 1-632, 1-635, 1-636,1-640, 1-641, 1-655, 1-658,
1-660, 1-662, 1-675, 1-678,
1-682, 1-700, some 1-630 and
1-631

Code (R)

1-W
2-S&R
3-Bk
4-N/C
1-655, 1-658 and 1-675 require
Sw.K

Insert 4.7K ohm resistor in series with white lead in desk mics.

1-605, some 1-602

Code (R)

1-W
2-S
3-Bk
4-R

1-630

Code (R)

1-W
2-R&S
3-N/C
4-N/C
5-Bk
6-N/C

1-631, 1-580

Code (R)

1-W
2-R&S
3-Bk
4-N/C
5-N/C
6-N/C

1-590A

Wired-in

Color for color except reverse R and Bk.

Code (E)

Tur Roy
W W
S S
R Bk
Bk R**RYSTAL****CBRT700, CBR1800**

Code (E)

1-W
2-S
3-R
4-Bk**CBR2100**

Code (E)

1-S
2-W
3-Bk
4-R**SAMN ELECTRONICS CORP.****Orbitsonic 200**

Code (E)

1-S
2-W
3-Bk
4-R

SANYO

TA901B

Code (E)

1-S
2-W
3-R
4-Bk
5-N/C

TA901C, TA1000, TA4000

Code (E)

1-Bk
2-W
3-S
4-R

TA923

Code (E)

1-S
2-N/C
3-Bk
4-W
5-R**S B E INC.****(Linear Systems)**

SBE49CB (Brute 40)

Code (E)

1-R
2-S
3-N/C
4-W
5-Bk

SBE34 (Brute)

Code (S)

W to R63 & C54
R&S to Gnd
Y-T2
Bu-D12
Bk-C12, C19

SBE ICB (Coronado, Wired-in Mic)

Code (R)

W-pin 11 of K1
Bk-pin 13 of K1
R&S-Gnd of chassis

SBE6, SBE7 (Sierra), SBE8 (Console), SBE10 (Coronado II), SBE11 (Trinidad), SBE21CB, SBE12 (Side Bander II), SBE14 (Super Console), SBE16 (Console II), SBE18 (Side Bander III), SBE21 (Cortez), SBE26 (Formula D), SBE29 (Catalina III), SBE30 (Trinidad II), SBE45 (Trinidad III), SBE42 (Cortez 40), SBE41 (Aspen), SBE44 (Malibu 40)

Code (R)

1-S
2-W
3-Bk
4-R

SBE22CB (Catalina II)

Code (S)

Tur Original mic col-
or/partS S
W W
Y Bu
Bk Brown
R R
Bu Bk

SBE9 (CB Catalina)

Code (R)

Has wired-in mic. Wire color for color

Capri II (wired in)

Code (S)

W to R61, C45
S to Gnd
Y to T8
R to R37, C46 etc.
Bk to D8
Bu to R35, R40 etc.

Tempus 25

Code (E)

1-S
2-W
3-Bk
4-R**SCOUT**

S110

Code (E) or (R)

1-W
2-Bk
3-R
4-S**SEARS**9343670500, 93436740500,
36710500, 36741600,
36742600, 36760600,
36712600, 38060700,
CM23785A, CM6000LB,
CM6000LA, CM6100S,
CM6200S, CM4700S,
CM6000LC, CM2358S

Code (E)

1-S
2-N/C
3-Bk
4-W
5-R

93436711600

Code (E)

1-N/C
2-S
3-R
4-W
5-Bk

2862676, 280626730

Code (R)

1-W
2-N/C
3-Bk
4-N/C
5-R
6-S
7-N/C

93436770500, 36771500,

36772600 (SSB)

Code (R)

1-Bk 1-R&S
2-N/C 2-N/C
3-W or 3-Bk
4-S&R 4-W
5-N/C 5-N/C**SEIKI**

HA23C

Code (R)

1-W 1-W
2-S&R 2-S&Bk
3-N/C or 3-R
4-N/C 4-N/C
5-Bk 5-N/C**SHAKESPEARE**

GBS240, 340, 1500, 2000, 2500

Code (E)

1-W
2-S
3-R
4-Bk
R & Bk may need to be re-versed.**SHARK**

CB55

Code (R)

1-S&R
2-W
3-N/C
4-Bk

C300X, CX300S

Code (E)

1-S
2-N/C
3-Bk
4-W
5-R**SHARP**

CB500, CB500A, CB500UB

Code (R)

W-Y or brown
S&R-S&R or Bk
Bk-purple

CB750, CB750A, CB800,

CB2260, CB2460

Code (E)

1-W
2-Bk
3-R
4-S

CBT55

Code (R)

1-W
2&3-R&S
4-Bk

Insert a 4.7K ohm resistor in series with the mic white lead of desk mics.

SHIGMA

SR76

Code (E)

1-W
2-S
3-R
4-N/C
5-Bk**SILTRONIX**

1011B, 1011C, 1011D

Code (E)

Rg-W
Tp-Bk
Se-R&S

SSB23, SSB23A, AM1 (Penguin),

AM2 (Condor)

Code (R)

1-W
2-Bk
3-N/C
4-R&S**SKYFON**

OM423

Code (R)

1-W
2-S&R
3-Bk
4-N/C**SOHMERIKAMA**

288A

Code (R)

1-S
2-Bk
3-W
4-R**SOMMERKAMP**

FT277E

Code (R)

1-R&S
2-W
3-Bk
4-N/C**SONAR**

E, G, H, FS23, FS2340, FS3023

Code (R)

Rg-W
Tp-Bk
Se-R&S

J23

Code (R)

Tur Orig. mic col-
or/part
W W
Bk R
R&S Bk&S

J23 (5-pin plug)

Code (E)

1-S
2-R
3-Bk
4-W
5-N/C

SONIC

CT101, 105, 121

Code (E)

Tur Son
W Y 1-S
Bk W or 2-Bk
R Bk 3-R
S S 4-W

SONICO

CT190

Code (E)

Tur Soni
W Y
R Y-Green
S S
Bk orange

SONY

ICB2500

Code (R)

1-S&R
2-Bk
3-N/C
4-W

SPARKOMATIC

CB1023

Code (E)

1-W
2-S
3-Bk
4-N/C
5-R
Sw.K required

CB1123

Code (E)

1-S
2-W
3-Bk
4-R

CB2023

Code (E)

1-W
2-S
3-Bk
4-R

CB2123

Code (S)

1-W
2-Bu
3-Bk
4-S
5-R
Y-not used

SQUIRE-SANDERS

23'er

Code (R)

Tp-Bk
Rg-W
Se-R&S

STANDARD

COMMUNICATIONS

Horizon 29

Code (E)

1-S
2-W
3-Bk
4-R

Horizon 29A

Code (E)

1-R
2-W
3-Bk
4-S

SUPERSCOPE

Aircommand CB140, CB340,

CB640

Code (E)

1-N/C
2-S
3-Bk
4-R
5-W

SURVEYOR

2400

Code (E)

Tur Sur.
R Purple
Bk R
W Y
S S

2300, 2400, 2400A, 2400B

Code (R)

1-Bk
2-S&R
3-N/C
4-W

2400

Code (R)

Code (E)
1-W 1-W
2-S 2-S
3-R or 3-Bk
4-N/C 4-N/C
5-Bk 5-R

2600

Code (E)

1-R
2-Bk
3-W
4-S

2610, 2630

Code (E)

1-S
2-W
3-Bk
4-R

SWAN

1210A

Code (R)

1-W
2-Bk
3-R
4-S

300B

Code (R)

Rg-W
Tp-Bk
Se-R&S

**TAKASAGO
ELECTRONIC
INDUSTRIES**

Highway 703CBR

Consult factory

TEABERRY

Plugs on some Teaberry radios must be fully assembled to be operational.

5X5, Big T

Code (E)

1-W
2-S
3-R
4-Bk
Big T requires Sw.K

5X5 (Silver Face)

Code (R)

1-W
2-R&S
3-Bk
Insert ¼ watt 22K ohm resistor in series with white lead for desk mics.

Big T, Stalker I, Stalker II

Code (R)

1-W
2-S
3-R
4-Bk
Sw.K required

Insert 4.7K ohm resistor in series with white lead for desk mics.

TB73, Titan T, T Bear, T Charlie,

T Command, T Dispatch

Code (E)

1-W
2-S
3-R
4-Bk

Mighty T

Code (E)

1-S
2-N/C
3-Bk
4-W
5-R

Plug must be fully assembled.

Racer T, T-Control, T Hawk

Code (E)

1-R
2-W
3-Bk
4-S

Model T, T123B

Code (R)

1-W
2-Bk
3-R
4-S
R&S may need to be reversed

Ship's Radio

Code (R)

1-W
2-Bk
3-S
4-R

Tele-T

Code (E)

1-S
2-N/C
3-R
4-W
5-Bk
6-N/C

Mini-T

Code (S)

Consult factory

T-Charlie I

Code (E)

1-R 1-Bk
2-W or 2-W
3-Bk 3-S
4-S 4-R

Twin T

Code (R)

Rg-W
Tp-Bk
Se-R&S

T-Scout

Code (E)

Tur Tea 1-W
W Y or 2-S
Bk R 3-R
S S 4-Bk
R Violet

TELEDYNE

RA510

Code (R)

1-W
2-R&S
3-Bk

TEMPO

ONE

Code (R)

Tp-Bk
Rg-W
Se-S&R

TENKO

M80
Code (R)
Rg-Bk
Tp-W
Se-S&R

TOKAI

TC5040
Code (S)
1-W
2-Y
3-Bk
4-R
5-Bu
6-S

TOKYO-SANSEI

Grand-Prix, D1325RF, 1125
Code (E)
1-W
2-S
3-R
4-Bk

TOYOTA MOTOR SALES

00860-00020, 00860-0001
Code (E)
1-W
2-Bk
3-S&R
4-N/C
5-N/C
R may need to be on pin 5

TRADESCOPE

2001
Code (R)
1-R
2-Bk&S
3-N/C
4-W
5-N/C
6-N/C

TRAM

TR27D, TR27E, TR70C, XL100,
Corsair, 464
Code (R)
Tp-Bk
Rg-W
Se-R&S
Titan, Titan II, Titan IIA, Titan III,
Titan IV, D201
Code (R)
1-W
2-S
3-R
4-Bk

Diamond 40, Diamond 60, XL,
XL5

Code (R)
1-S
2-W
3-Bk
4-R

Diamond 60 and Diamond 40
require 4.7K ohm resistor in
series with the white lead in
desk mics.

Newer models XL5 and
Diamond 40 may be Code (E).

TRANSPHONIC

CB418
Code (E)
1-S
2-W
3-R
4-Bk
5-N/C

TRANSONIC

MCB22, MCB40, MCB41
Code (E)
1-W
2-S
3-Bk
4-R

MCB24
Code (E)
1-W
2-S
3-R
4-Bk

TRUETONE

MIC4434A67 (with noise blanker)
Code (E)
1-W
2-S
3-R
4-Bk
May require a 33K ohm resistor
in series with white lead

MIC4434A67 (without noise
blanker)
Code (E)
1-W
2-S
3-Bk
4-R

MCC4434A57

Code (E)
1-W
2-Bk
3-R
4-S

UNIDEN CORP.

CBR9300
Code (R)
1-N/C
2-Bk
3-W
4-S&R

UNIMETRICS

Porpoise I
Code (E)
W to C34
S to Chassis Gnd
R to Br
Bk to Bt

Porpoise I, Mako I, Marlin I
Code (S)
Tur Uni board No.
Bu 2
R 1
Bk 3
W 4
Y N/C
S Gnd

Stingray I
Code (R)
Middle terminal-W
Bottom terminal-Bk
Top two-R&S

Stingray II
Code (R)
1-W
2-R
3-S
4-N/C
5-Bk

Sandpiper 25, Sandpiper 25DX
Code (E)
1-R
2-W
3-S
4-Bk

Seahorse I
Code (S)
Bu-T2
Bk-R3
W-M4
S-G
R-B1
Y not used

UNION

UTR1000
Code (E)
1-W
2-S
3-R
4-Bk

UNIVERSE

747
Code (R) 1-S
W to B1 or 2-W
Bk to relay 3-R
R&S to Gnd 4-Bk

U S L

Contact 23
Code (E)
1-Bk
2-W
3-R
4-S
Sw.K required

UTAC

TR20
Code (R)
Rg-W
Tp-Bk
Se-R&S

18M, TRX30

Code (R)
1-W
2-R&S
3-Bk

Micro Mini 3, Micro Mini 6,
Micro Mini 23, Super Tiny 23

Code (S)
1-W 1-W
2-Y 2-Bk
3-Bk 3-Bu
4-R or 4-Y
5-Bu 5-R
6-S 6-S

Studio 4000

Code (R)
1-W
2-Bk
3-S&R
4-N/C
TRX2000
Code (R)
1-Bk
2-S&R
3-W
4-N/C
5-N/C

VANCO

Stallion 1000
Code (R)
1-W
2-Bk&S
3-R
4-N/C
5-N/C

VECTOR

III, VI, IX
Code (R)
1-W
2-S&R
3-N/C
4-Bk

VII
Code (E)
1-W
2-S
3-R
4-Bk

WELLS INC.

W605
Code (R)
1-W
2-S&R
3-Bk
4-N/C
5-N/C

W705
Code (E)
1-S
2-W
3-Bk
4-R

WESTERN AUTO

23-4434-9, CYJ4834A-87,

CYJ4832A-87

Code (E)

1-W

2-S

3-R

4-Bk

CYJ4837A-87

Code (E)

1-W

2-N/C

3-R

4-S

5-N/C

6-Bk

**WESTLAND
INTERNATIONAL**

Westport 9000

Code (E)

1-W

2-S

3-R

4-Bk

WILSON

60

Code (E)

1-W

2-S

3-R

4-Bk

WINDSOR

W60, W80, MCB22

Code (E)

1-W

2-S

3-R

4-Bk

1008

Code (R)

1-W

2-S

3-R

4-N/C

5-Bk

3000

Code (E)

1-S

2-W

3-R

4-Bk

5-N/C

X-TAL

XCB7

Code (E)

1-W

2-N/C

3-N/C

4-R

5-Bk

6-S

XCB70

Code (S)

1-W

2-N/C

3-S

4-Bu

5-R

6-Bk

XCB71

Code (S)

1-W

2-N/C

3-Bu

4-S

5-Bk

6-R

XCB6, CB3, Granada

Code (E)

1-S

2-W

3-R

4-Bk

CB5, XCB11

Code (R)

1-S&R

2-W

3-N/C

4-Bk

CB7

Code (E)

1-W

2-N/C

3-Bk

4-N/C

5-R

6-S

XSSB10

Code (R)

1-Bk

2-N/C

3-N/C

4-N/C

5-W

6-R&S

YAESU

FT101, FT109B, FT401B

Code (R)

Tp-Bk

Rg-W

Se-R&S

FT101, FT101B, FT101EE,

FT101EX

Code (R)

1-R&S

2-W

3-Bk

4-N/C

ZENIER

77

Code (E)

1-W

2-S

3-R

4-Bk

ZODIAC

M5023

Code (E)

1-S

2-N/C

3-Bk

4-W

5-R

1-W

2-S

or 3-Bk

4-N/C

5-R

M5026

Code (R)

1-W

2-R&S

3-Bk

4-N/C

5-N/C

In parting, we at Telex hope your microphone and radio are working well together and that you are enjoying the benefit of each. It should be pointed out that information in this booklet is as accurate as the information we have received.

We would like to thank all the concerned individuals, agencies and companies who have contributed information to make this booklet possible.

Thank you,
Customer Relations Department

RETURNING MICS TO FACTORY FOR REPAIR

Should it become necessary to return your microphone to the factory, please use the following form and return via insured mail or UPS to:

Turner Division of
Telex Communications, Inc.
ATTN: CB Customer Service
1720 E. 14th St.
Glencoe, MN 55336

Your Name _____

Your Address _____
Street

City State Zip

Your Telephone _____

Date _____

Type of Microphone _____

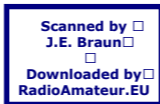
Length of Time Owned _____

Radio Mfg. Name _____

Model Number _____

How used (ie: car, boat, truck, etc.) _____

Specific Problem _____



On chargeable repair orders, microphones will be returned COD, UPS, unless otherwise specifically requested. Customers requesting shipment by "fastest way" will be charged for that service.

TELEX **TURNER**

TELEX COMMUNICATIONS, INC.

PN 02695