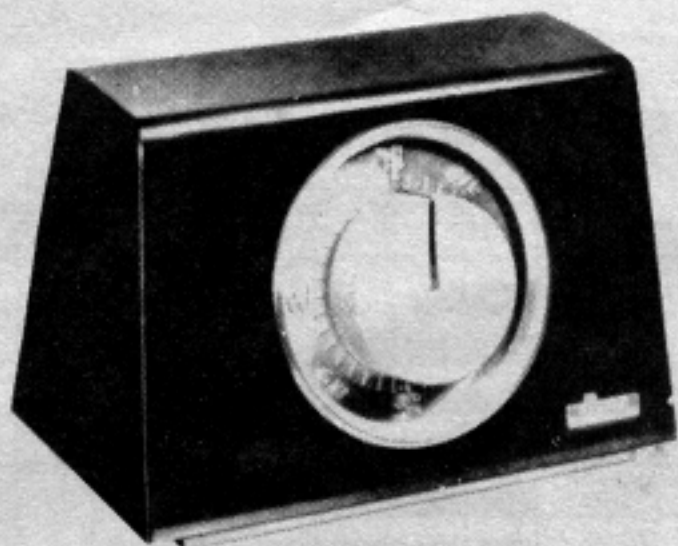


ALLIANCE

Automatic **TENNA-ROTOR**



**MODEL
U-100**

**Latest Model Antenna Rotator
for "TOP" TV-FM Reception!**

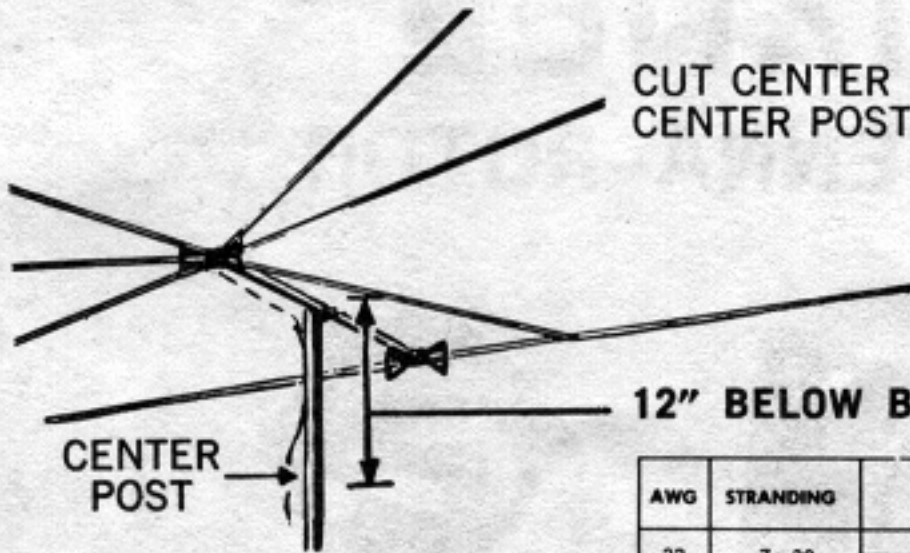
- FULLY AUTOMATIC
- SUPERB STYLING
- EASY TO INSTALL

**AIM YOUR ANTENNA FOR
CLEAR CUT PICTURES!**

ROTATOR INSTALLATION INSTRUCTIONS

STEP 1

CUT CENTER POST TO LENGTH, DO NOT USE CENTER POST LARGER THAN 1 $\frac{3}{8}$ " O.D.



12" BELOW BOTTOM CROSS BAR

CENTER POST

For proper performance do not exceed the maximum lengths per wire size (AWG) on chart.

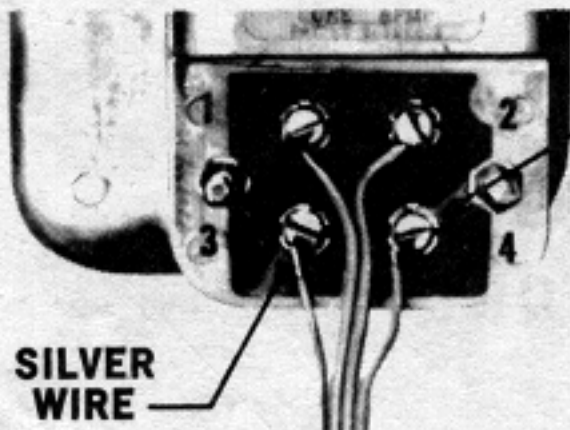
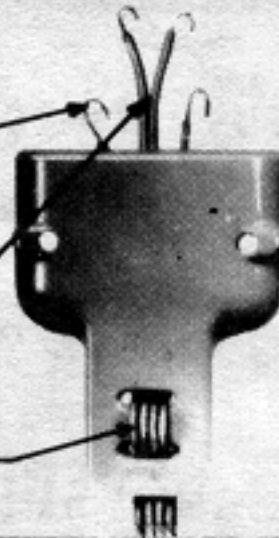
| AWG | STRANDING | 50 FT. | 100 FT. | 150 FT. | 200 FT. | 250 FT. | 300 FT. | 350 FT. | 400 FT. |
|-----|--------------------|------------|------------|------------|------------|------------|------------|---------|---------|
| 22 | 7 x 30 | ██████████ | | | | | | | |
| 20 | 7 x 28 | ██████████ | ██████████ | | | | | | |
| 20 | DOUBLED 7 x 28 | ██████████ | ██████████ | ██████████ | ██████████ | | | | |
| 20 | 10 x 30 | ██████████ | ██████████ | | | | | | |
| 20 | DOUBLED 10 x 30 | ██████████ | ██████████ | ██████████ | ██████████ | | | | |
| 18 | 16 x 30 | ██████████ | ██████████ | ██████████ | | | | | |
| 18 | DOUBLED 16 x 30 | ██████████ | ██████████ | ██████████ | ██████████ | ██████████ | ██████████ | | |

STEP 2

SILVER WIRE

SEPARATE LEADS,
STRIP AND TIN.

Feed 4 wire cable
through slots shown.



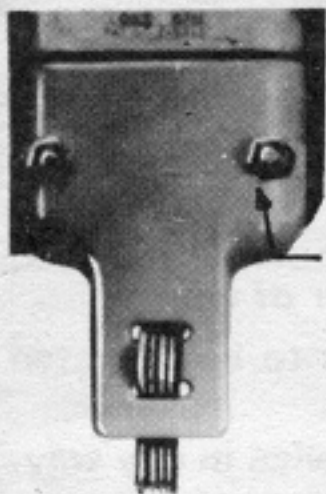
SILVER WIRE

STEP 3

TWIST WIRES AROUND TERMINAL SCREWS AND TIGHTEN SECURELY.

WARNING: No loose strands of wire to touch adjacent terminals or metal case.

IMPORTANT:
NOTE EXACT LOCATION OF EACH WIRE.



STEP 4

SLIDE TERMINAL COVER UP CABLE AND FASTEN OVER TERMINALS AS SHOWN.

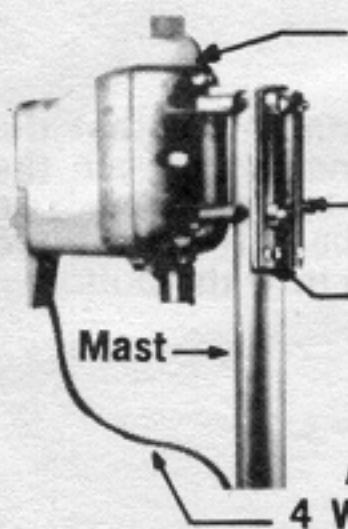
STEP 5

ATTACH SET SCREW AND NUT TO CLAMP PLATE.



STEP 6

CLAMP ROTOR ON MAST



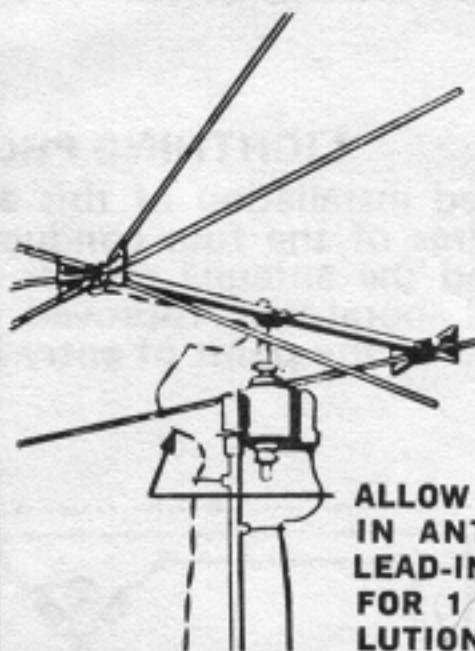
MODEL U-100 IS IDENTIFIED BY BLUE WEATHER SHIELD.

TIGHTEN SET SCREW.

THESE THREE HOLES MAY BE USED FOR GUYING.

ALLOW SLACK IN 4 WIRE CABLE

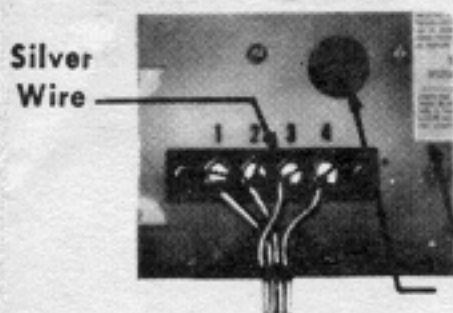
STEP 7



PUT ANTENNA CENTER POST THRU ROTOR HOLLOW SHAFT. POINT BACK OF ANTENNA TOWARD MOST DESIRED STATION AND TIGHTEN U BOLTS.

ALLOW SLACK IN ANTENNA LEAD-IN WIRE FOR 1/4 REVOLUTION.

STEP 8



CONNECT WIRES TO LIKE NUMBERED TERMINALS. (See Step 3.)

Instruction Label

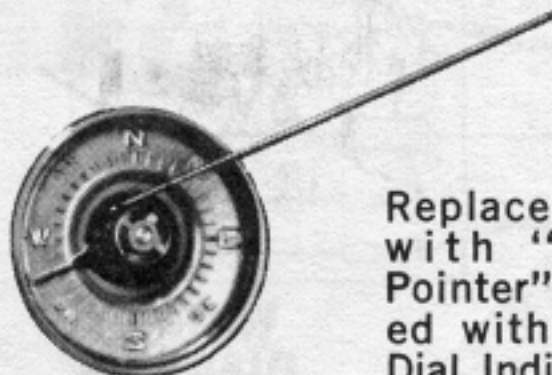
Alignment Switch

Unit is shipped with rotator against stop. If unit is operated before installing, return hollow shaft to stop position and synchronize control box as per instruction label on underside before proceeding with Step 9.

WARNING: No loose strands of wire to touch adjacent terminals or metal case.

STEP 9

TO ALIGN CONTROL BOX: Check antenna direction. Remove plastic knob and move "Red Dial Indicator" to same direction as antenna. Use sharp instrument through hole, as shown below, to set "Red Dial Indicator."



Replace knob with "Gold Pointer" aligned with "Red Dial Indicator."

OPERATING INSTRUCTIONS

Simply move "knob pointer" to desired direction. The "red dial indicator" shows position of antenna as it is moving.

Allow unit to come to rest before reversing direction.

If desired to turn a complete circle (from stop to stop) move knob halfway and allow "Red Pointer" to come to rest, then turn knob remainder of way.

Do not force knob when end stops are reached. This unit is to be operated on 115 volt, 60 cycle A.C.

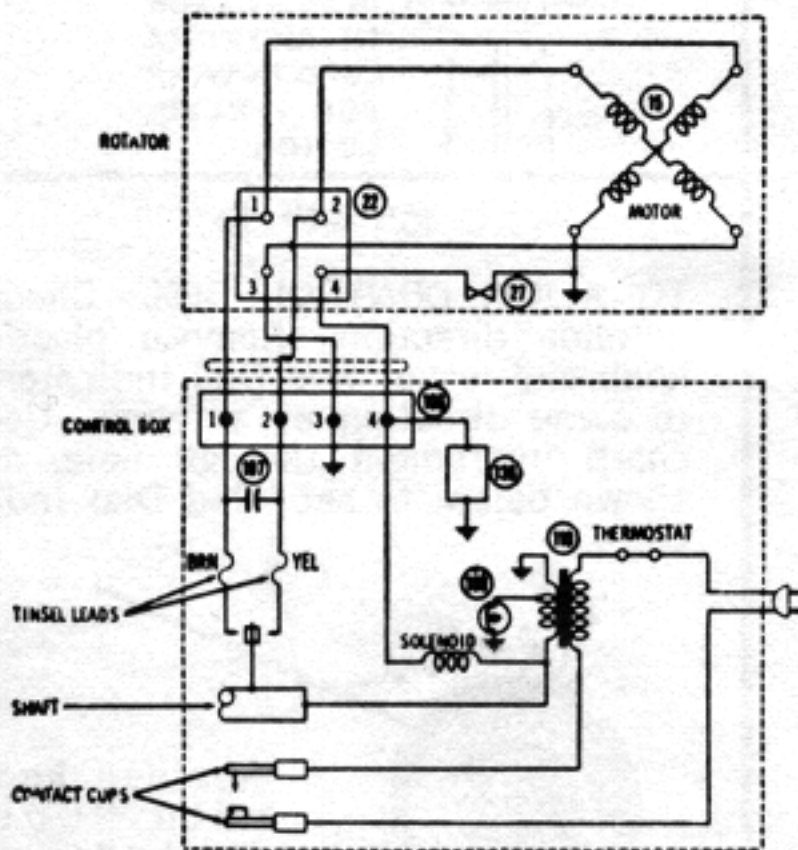
Caution: Do not operate with cover removed or alter this device in any way.

Do not build into other devices.

Do not use this device for any purpose other than its intended use.

LIGHTNING PROTECTION

For an approved installation of this equipment, it is recommended that the two outside wires of the four conductor cable, which connects between the control box and the antenna rotator on the mast, be grounded through an Underwriters' Laboratories approved lightning arrester. The arrester should be located close to the point of entry of the four wire cable into the building.



**WIRING
DIAGRAM**

"The device described herein is manufactured under one or more of the following U. S. Patents"

| | | | |
|-----------|-----------|-----------|-----------|
| 2,861,265 | 2,883,596 | 3,005,190 | 3,022,460 |
| 3,126,506 | 3,297,923 | 3,327,187 | 3,329,945 |
| 3,495,143 | 3,496,632 | 3,541,367 | 3,667,024 |

Licensed in Canada

4-26-60, 5-3-60, 4-17-62,
8-6-63, 4-21-64 4-12-66



ALLIANCE
MANUFACTURING CO. INC.
ALLIANCE, OHIO

X-8906-B SS Ptd. in U.S.A.