

COLLINS TORSIONAL MECHANICAL FILTER

7- POLE DESIGN

ELECTRICAL	0°C TO +60°C	
	VALUE	TOLERANCE
CENTER FREQUENCY	455.00 kHz	± 0.09 kHz
BANDWIDTHS F3H - F3L F60H - F60L	0.300 kHz 1.000 kHz	± 0.06 kHz max.
PASSBAND RIPPLE	3.0 dB	max.
INSERTION LOSS	10.0 dB	max.
STOPBAND 355 kHz to F60L F60H to 555 kHz	60 dB 60 dB	min. min.

NOTE: The maximum signal input voltage is 1.0 volt RMS.

ROCKWELL COLLINS
FILTER PRODUCTS
2990 Airway Ave., Costa Mesa, CA 92626

526-8733-010

Engineer: D. P. Havens

Filter Type: SYM

Rev. Ltr. B

Approved: L. G. Cornett

FSCM No.: 2X491

Date: 5-27-98

ENVIRONMENTAL REQUIREMENTS:

OPERATING TEMPERATURE RANGE: 0°C to +60°C

NON-OPERATING TEMPERATURE RANGE: -30°C to +85°C

VIBRATION: MIL-STD-202, Method 201, 10 G's, 10 Hz to 55 Hz

SHOCK: MIL-STD-202, Method 213B, 50 G's, 11 ms, half-sine

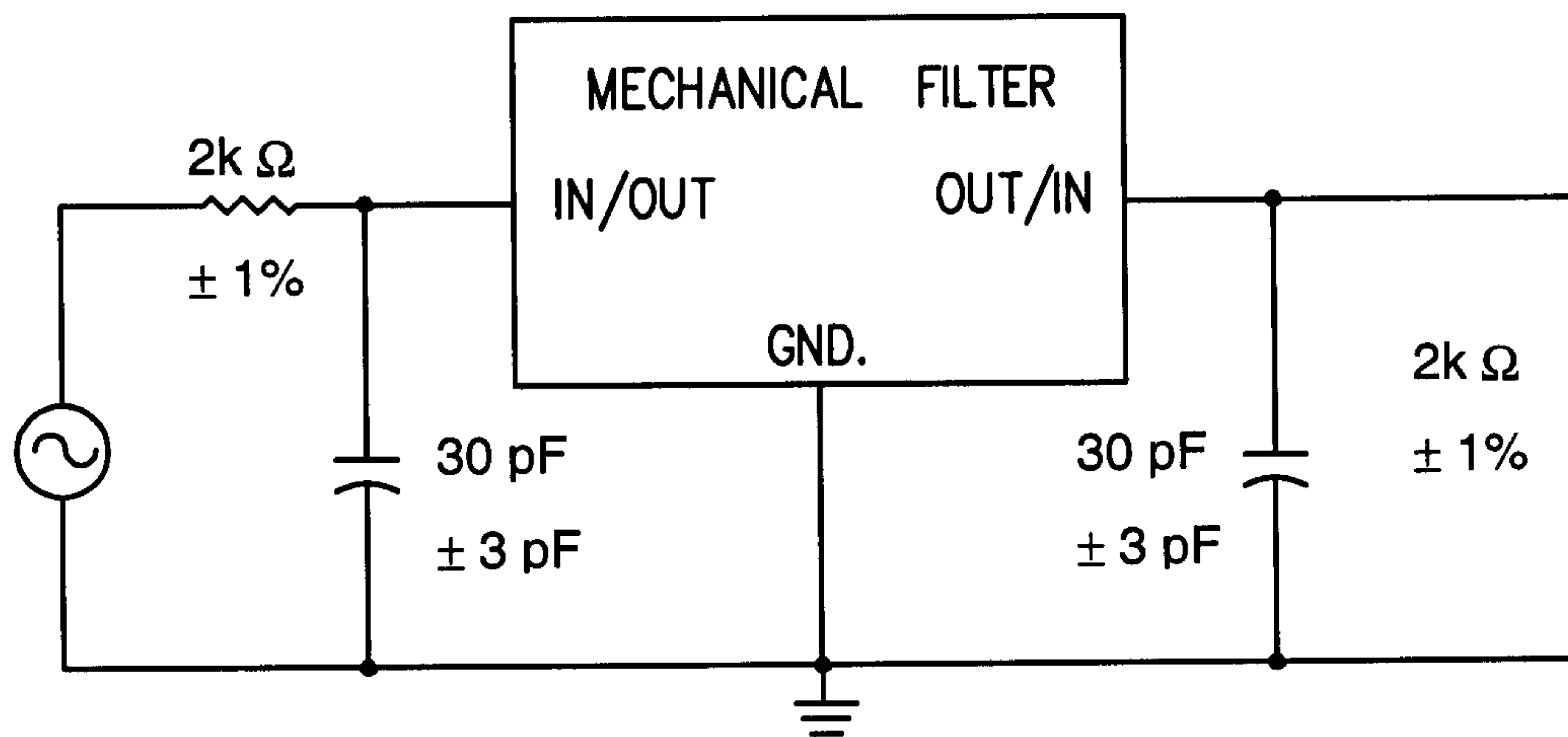
MECHANICAL REQUIREMENTS:

CONSTRUCTION: Sealed, Non-Hermetic

CASE STYLE: PS

MARKING: Rockwell Collins Part Number
Date Code

TEST CIRCUIT:



NOTE: 30 pF Includes any board stray capacitance.

ROCKWELL COLLINS
FILTER PRODUCTS
2990 Airway Ave., Costa Mesa, CA 92626

526-8733-010

COLLINS TORSIONAL MECHANICAL FILTER

7- POLE DESIGN

ELECTRICAL CHARACTERISTICS	25 DEG. C		TEMP. RANGE		
	CENTER FREQUENCY	FREQ. (kHz) 455.00	TOL. (kHz) ± 0.10	FREQ. (kHz) 455.00	TOL. (kHz) ± 0.15
BANDWIDTHS	WIDTH (kHz)	TOL. (kHz)	WIDTH (kHz)	TOL. (kHz)	
F3H - F3L	0.50	± 0.10	0.50	± 0.10	
F60H - F60L	2.00	MAX	2.00	MAX	
PASSBAND RIPPLE	(dB)	TOL. (kHz)	(dB)	TOL. (kHz)	
	3	MAX	3	MAX	
INSERTION LOSS	(dB)	TOL.	(dB)	TOL.	
	5	MAX	6	MAX	
STOPBAND	(dB)	TOL.	(dB)	TOL.	
440 - F60L (kHz)	60	MIN	60	MIN	
F60H - 470 (kHz)	60	MIN	60	MIN	

NOTE: The max. signal input voltage is 1.0 volt RMS.

ROCKWELL COLLINS FILTER PRODUCTS 2990 AIRWAY AVE., COSTA MESA, CA 92626		<h1>526-8693-010</h1>	
ENGINEER:	P. Ysais	FILTER TYPE:	SYM
		REV. LTR.	--
APPROVED:	D. P. Havens	FSCM NO.	2X491
		DATE:	11-8-93

ENVIRONMENTAL REQUIREMENTS:

OPERATING TEMPERATURE RANGE: 0°C to +60°C

NON-OPERATING TEMPERATURE RANGE: -30°C to +85°C

VIBRATION: MIL-STD-202, Method 201, 10 G's, 10 Hz to 55 Hz

SHOCK: MIL-STD-202, Method 213B, 50 G's, 11 ms, half-sine

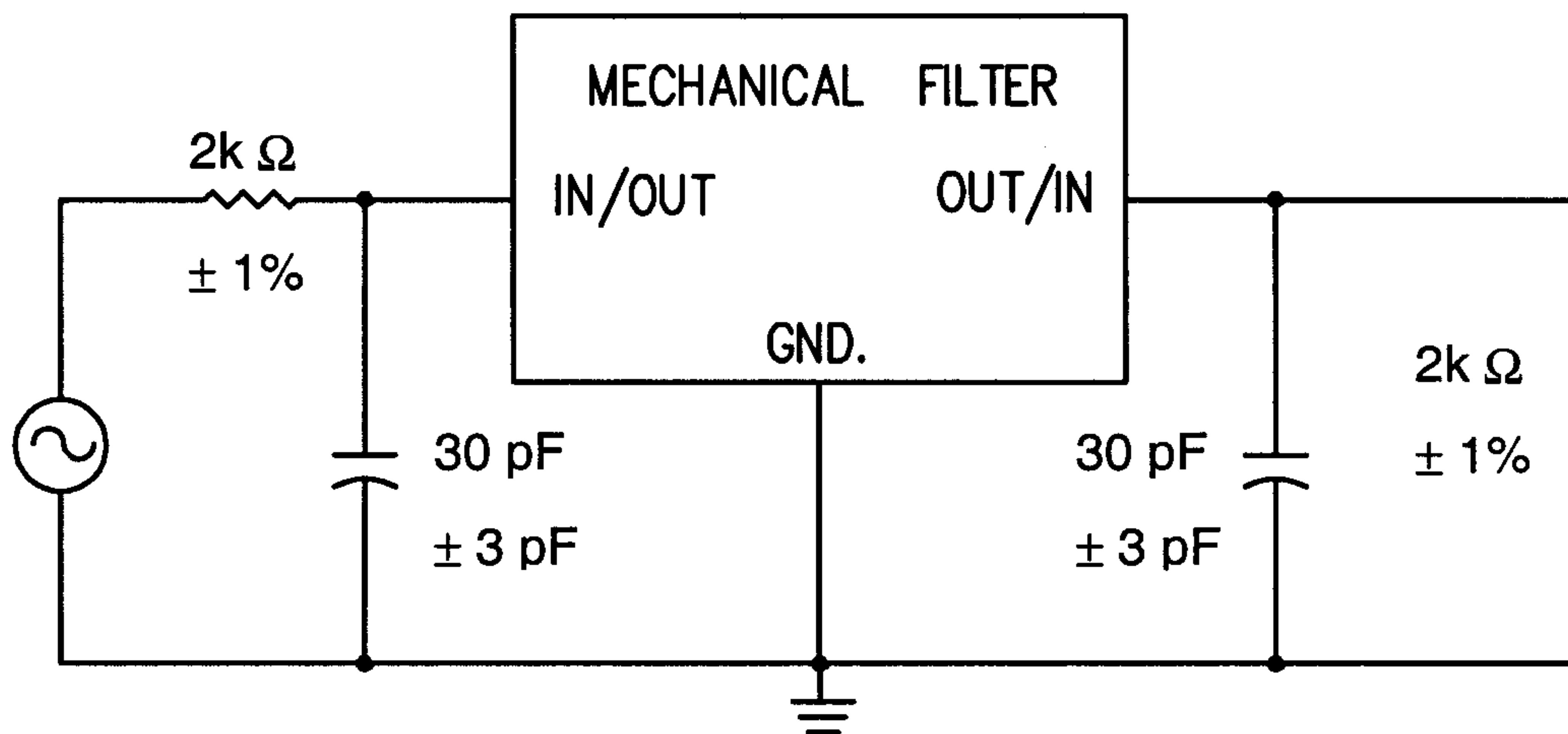
MECHANICAL REQUIREMENTS:

CONSTRUCTION: Sealed, Non-Hermetic

CASE STYLE: PS

MARKING: Rockwell Collins Part Number
Date Code

TEST CIRCUIT:



NOTE: 30 pF Includes any board stray capacitance.