

LPB AM 5 WATT

RADIO - CINE

PICTURE BOOK

COMPILED BY JEFF MORRISON ON APRIL 7, 2015

TABLE OF CONTENTS

PAGE

- 1) FRONT VIEW**
- 2) OPERATING INSTRUCTION, INSIDE LID COVER**
- 3) BACK VIEW**
- 4) SIDE VIEW**
- 5) SIDE VIEW, HEAT SINK COOLING FINS**
- 6) TOP VIEW**
- 7) BOTTOM VIEW**
- 8) EXCITER PCB BOARD, TOP VIEW REV. B**
- 9) EXCITER PCB BOARD, BOTTOM VIEW REV. B**
- 10) EXCITER BOARD & POWER AMP & POWER SUPPLY TRANSFORMER, SIDE VIEW**
- 11) POWER AMP, TOP VIEW**
- 12) POWER AMP, BOTTOM VIEW**
- 13) POWER AMP, HEAT SINK PLATE, BOTTOM VIEW**
- 14) POWER SUPPLY, TRANSFORMER**
- 15) LPB DATA LABEL**

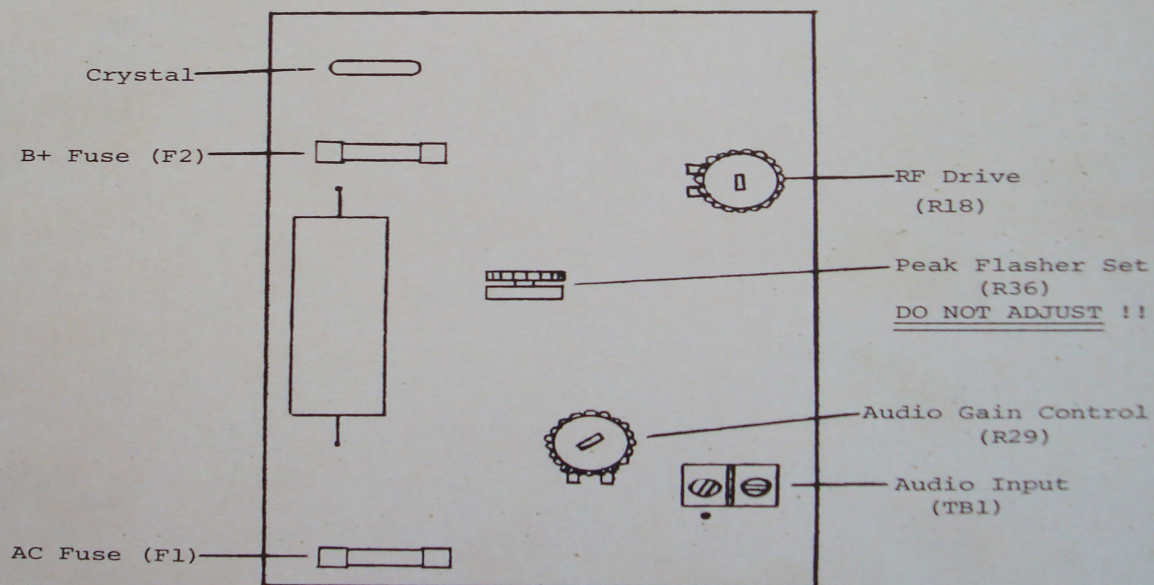
FRONT VIEW



OPERATING INSTRUCTION, INSIDE LID COVER

BRIEF OPERATING INSTRUCTIONS, AM-5 TRANSMITTER
(REFER TO SECTION 6.0 AND 9.0 OF THE AM-5 MANUAL FOR GREATER DETAILS)

1. Connect audio source to TB1
2. Connect load to RF output jack on bottom of can
3. Make sure RF drive and audio gain controls are fully CCW
4. Turn power switch on
5. Advance RF drive control CW until desired operating power is obtained (Green LED will increase in brilliance)
6. When using transmitter coupling unit, refer to instruction sheet on coupler cover for proper matching procedure
7. Advance audio gain control CW until red 'peak audio' LED flashes occasionally on loudest program peaks
8. This completes the set-up of the AM-5. Replace this cover on AM-5.



2183

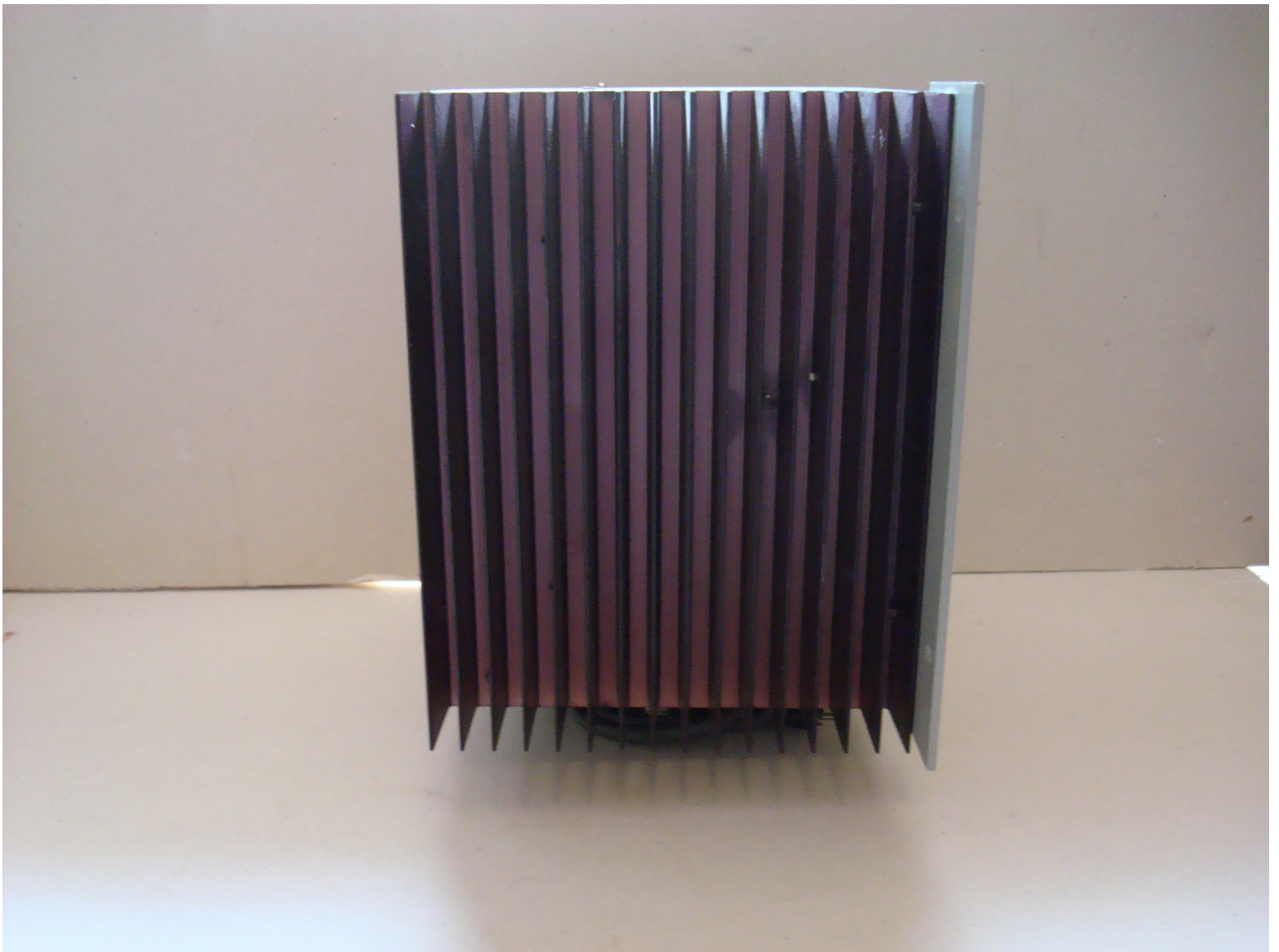
BACK VIEW



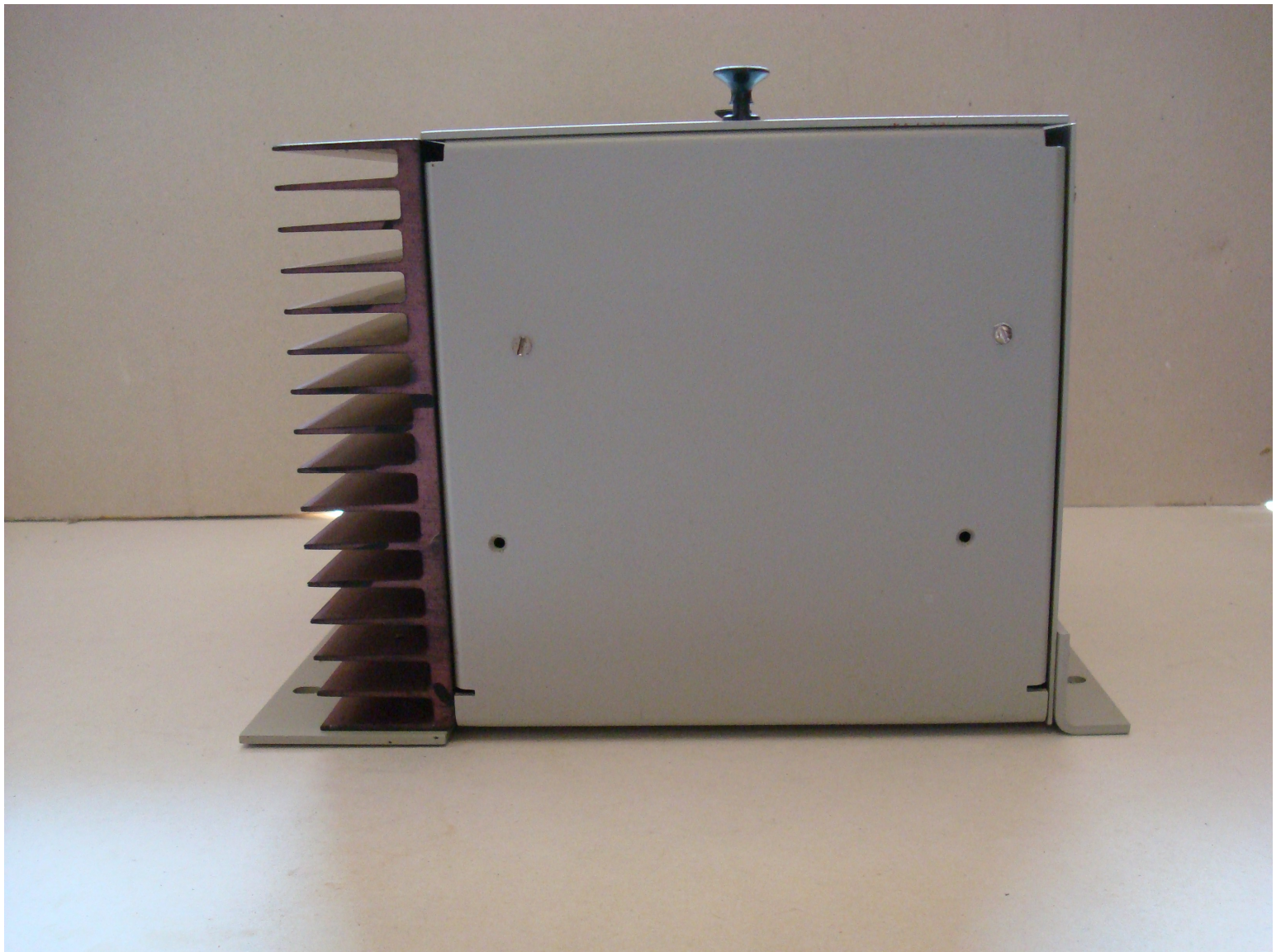
SIDE VIEW



**SIDE VIEW, HEAT SINK
COOLING FINS**



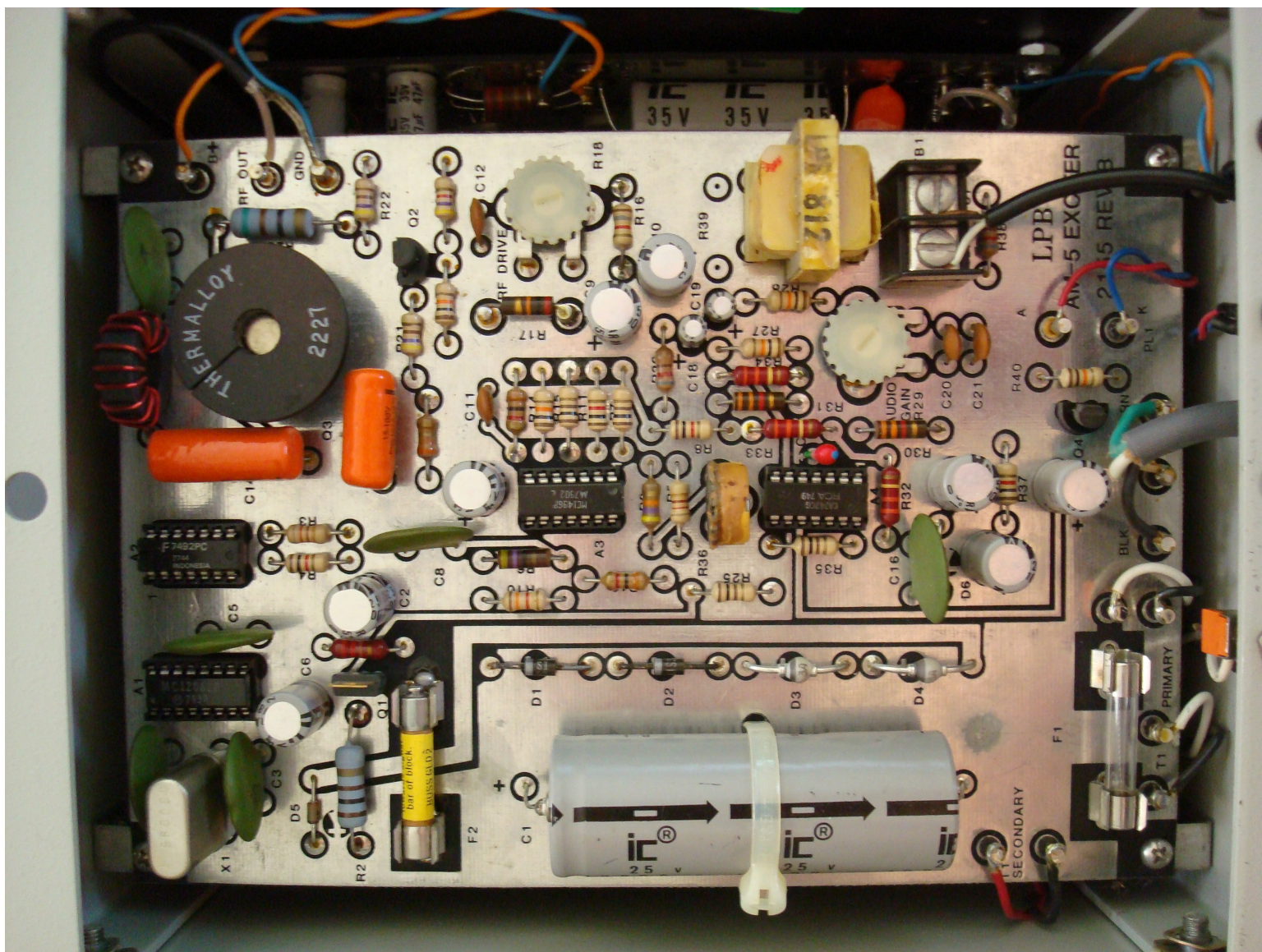
TOP VIEW



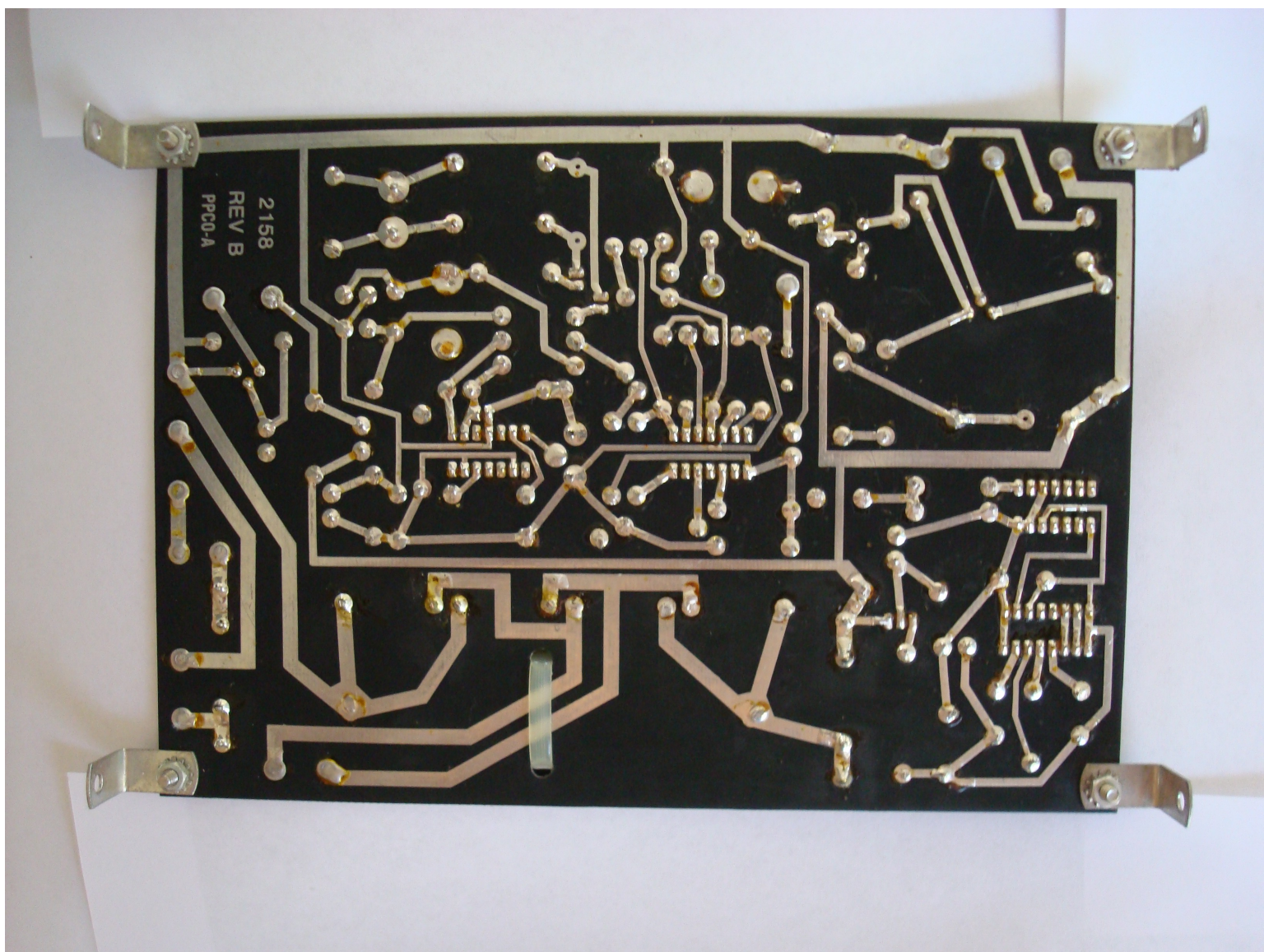
BOTTOM VIEW



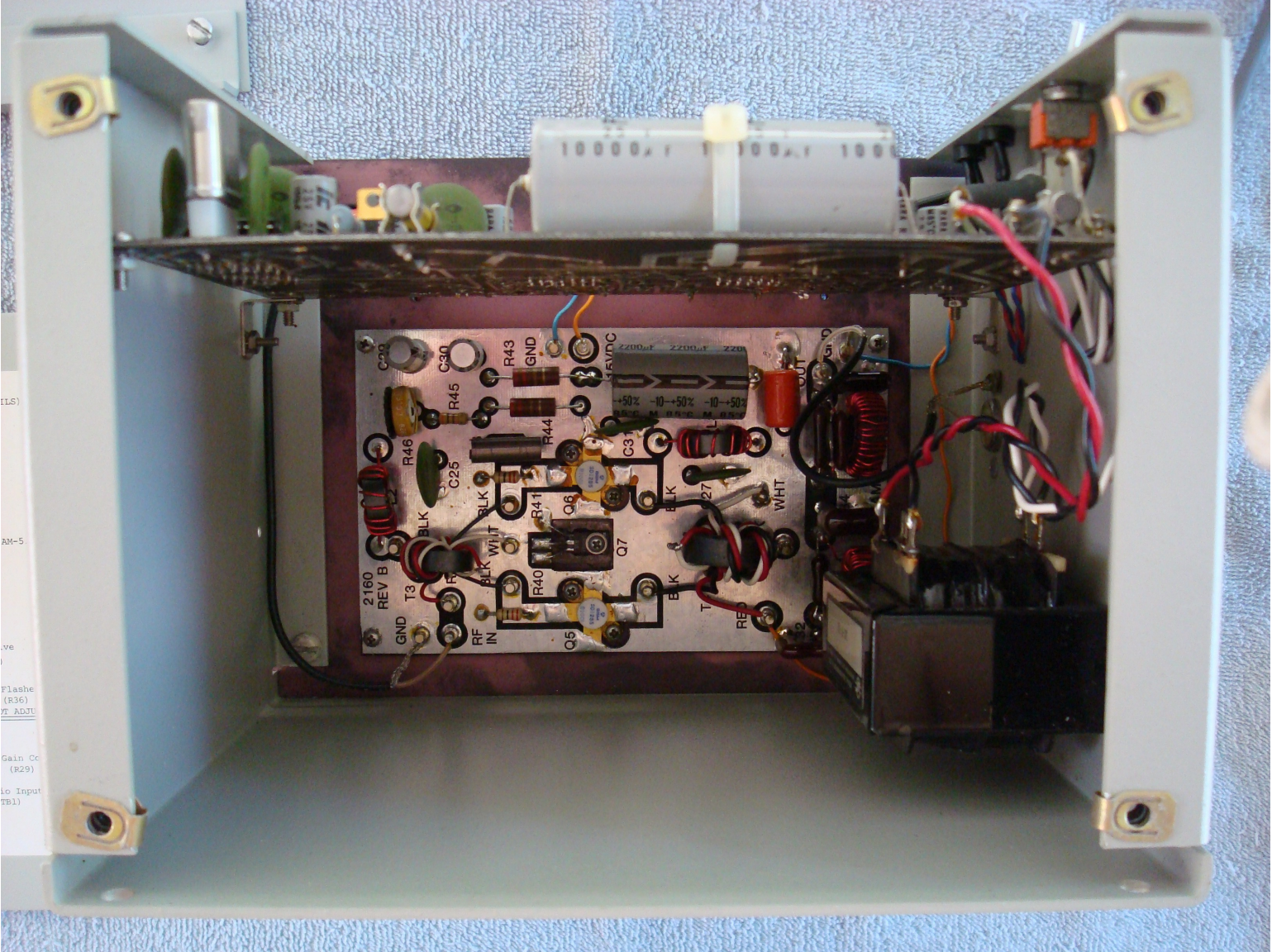
EXCITER PCB BOARD, TOP VIEW REV. B



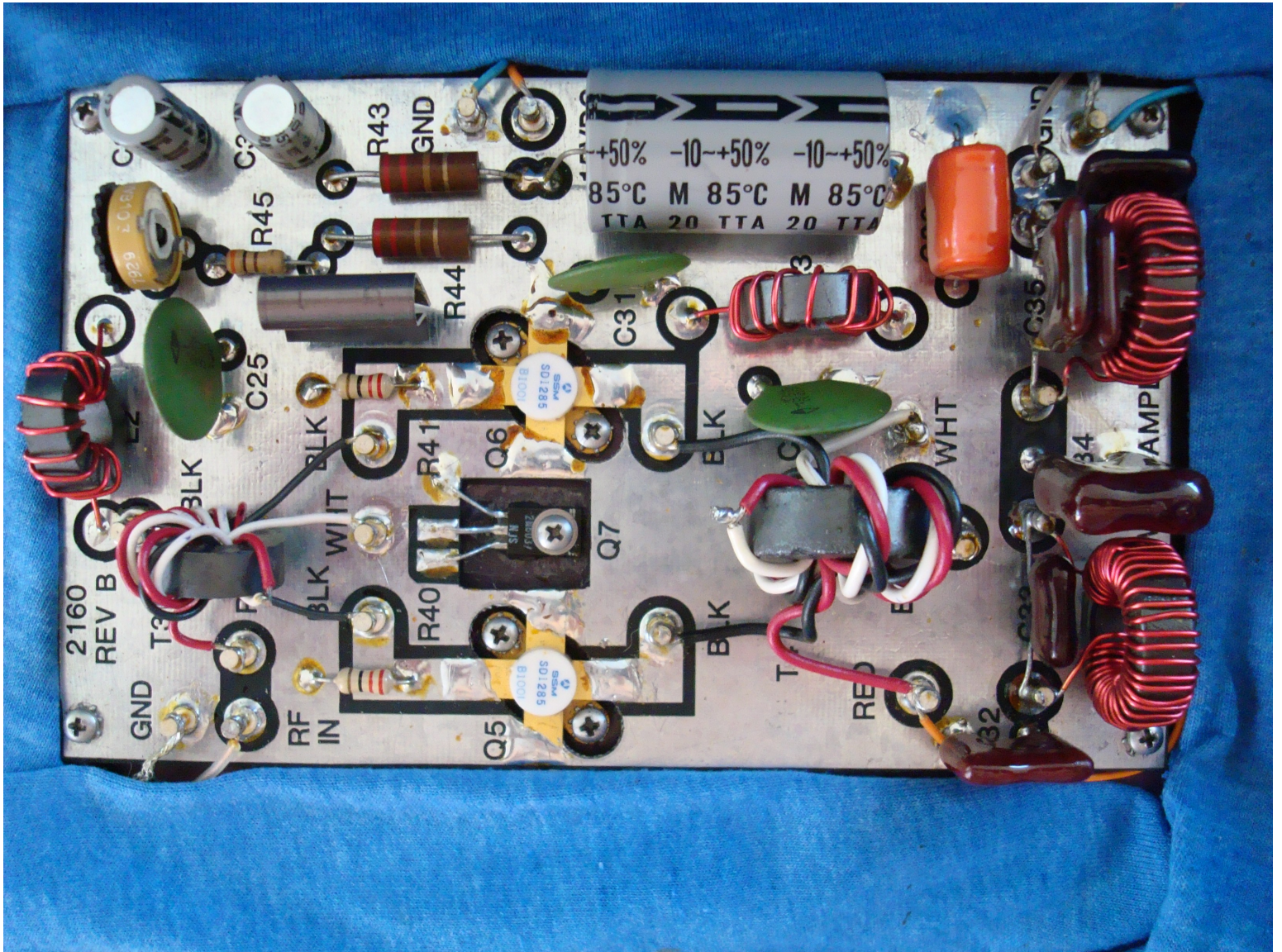
EXCITER PCB BOARD, BOTTOM VIEW REV. B



EXCITER & POWER AMP & POWER SUPPLY TRANSFORMER SIDE VIEW



POWER AMP, TOP VIEW



POWER AMP, BOTTOM VIEW



POWER AMP, HEAT SINK PLATE BOTTOM VIEW



POWER SUPPLY TRANSFORMER



LPB DATA LABEL

