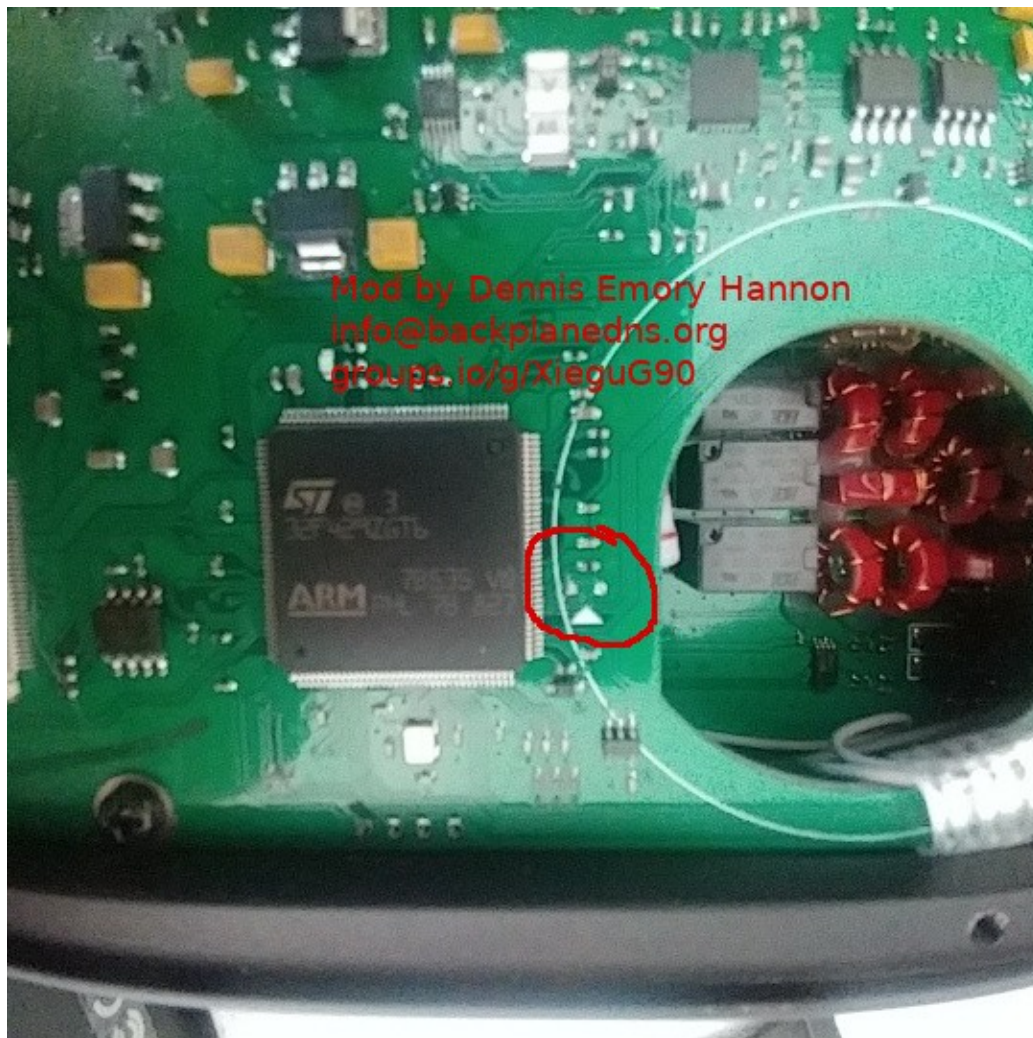
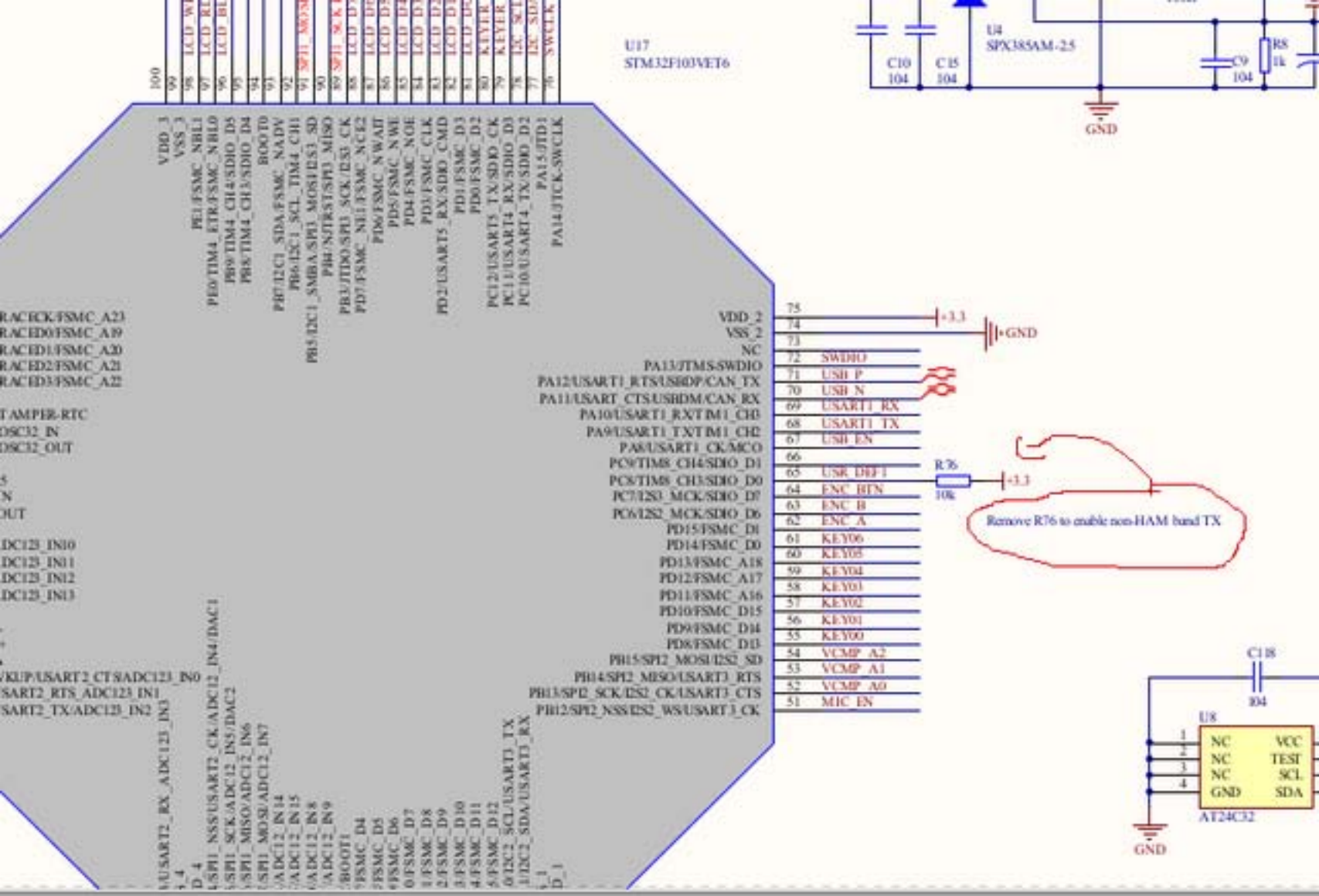


Xiegu G90 Full TX Unlock Mod

Unlicensed operation on any frequency is of course illegal. Don't do it!

- 1.) Disconnect everything from transceiver.
- 2.) Remove all top cover screws
- 3.) Remove front side rails
- 4.) Remove display head unit
- 5.) The top cover should now pop off.
- 6.) Near the ARM processor you will see a resistor with what appears to be a solid triangle/arrow pointing to it. You will also notice these other indicators pointing to SPK, TX, RX input outputs.
- 7.) Carefully remove that resistor by heating the solder joints with a soldering iron or an exacto blade.







3

32F429ZGT6

ARM

78636 VQ
PHL 7B 715

