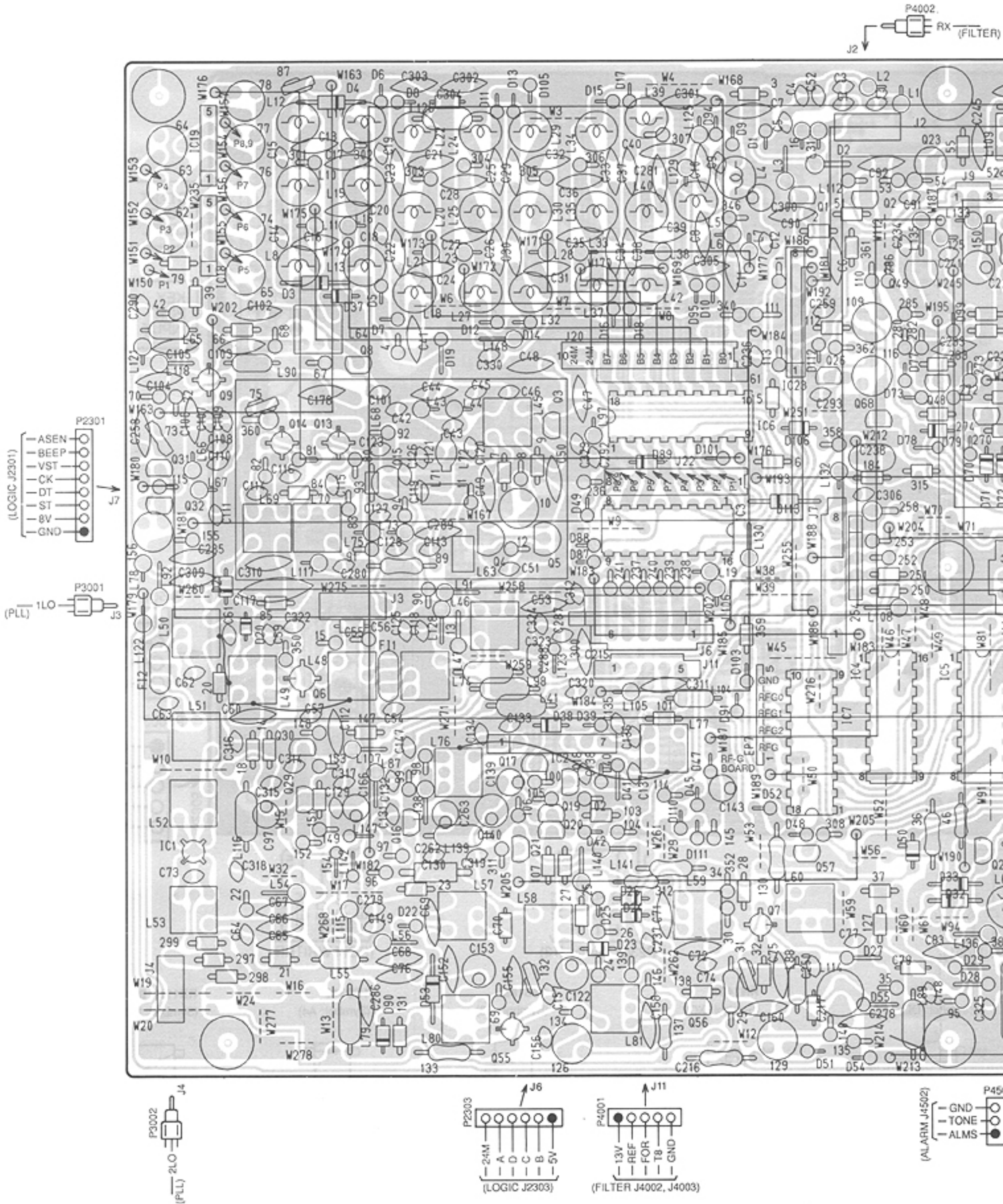
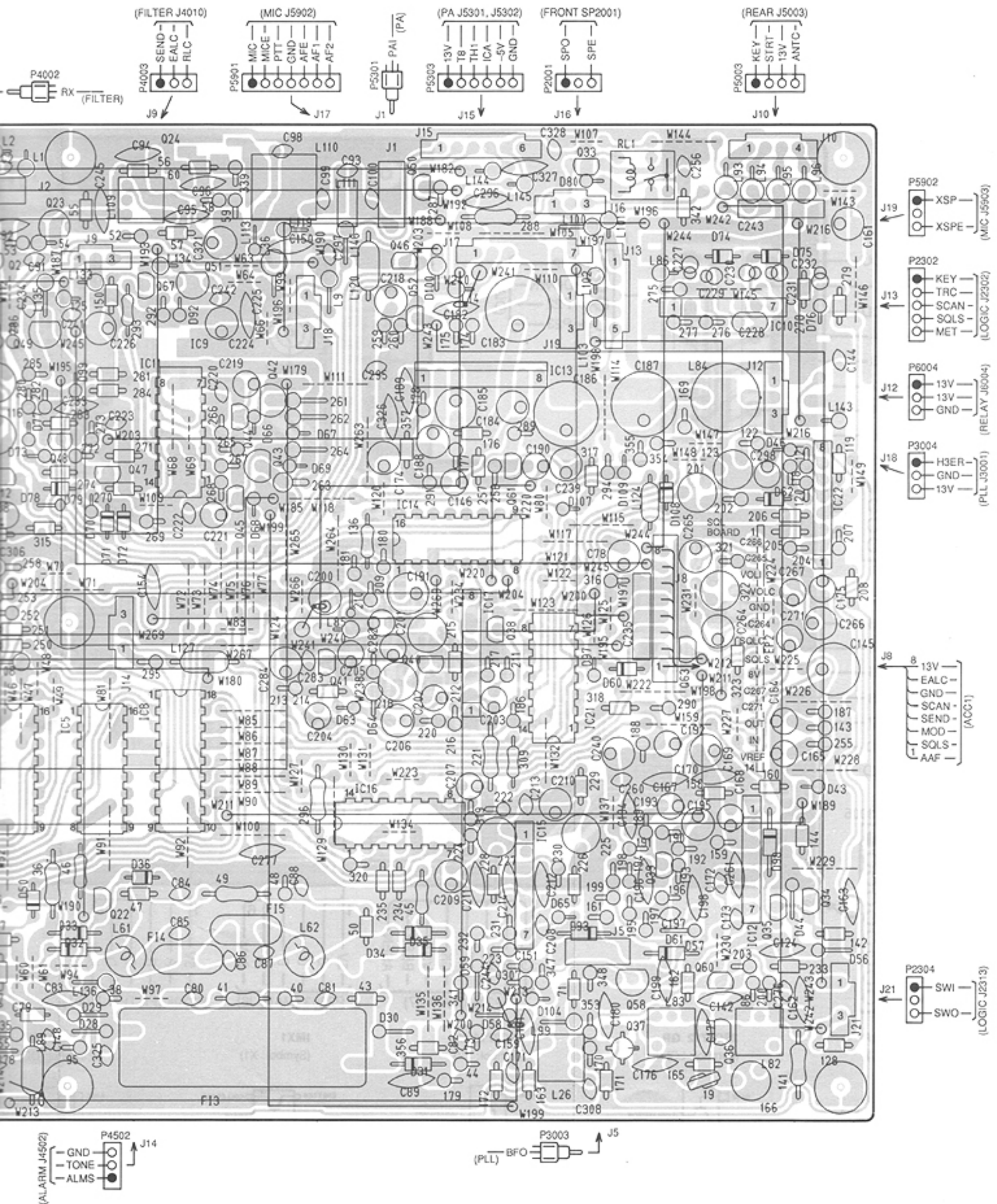
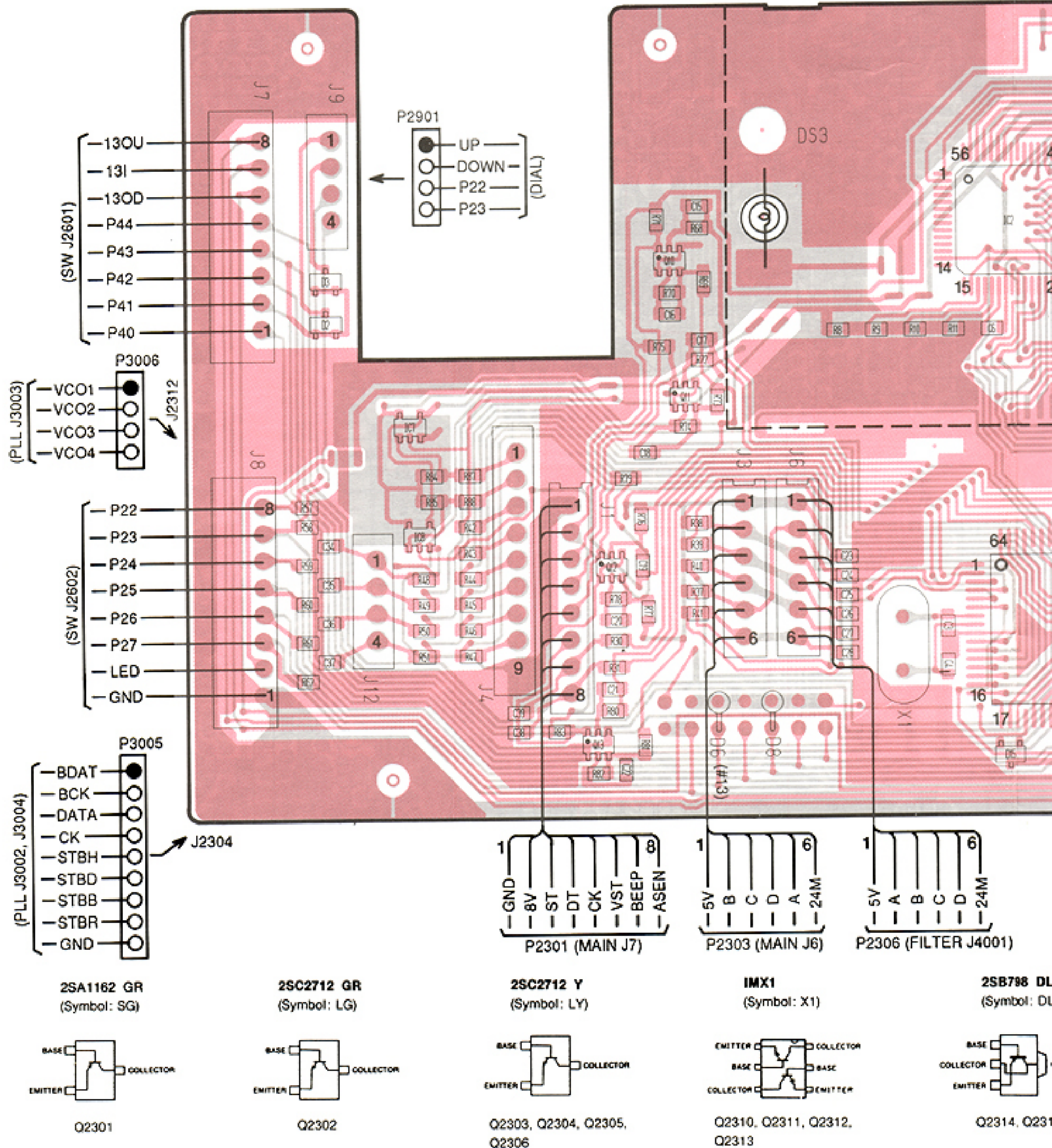


• MAIN UNIT

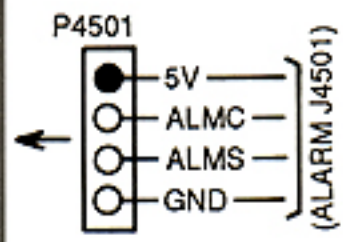
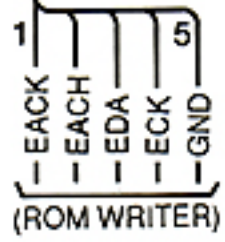
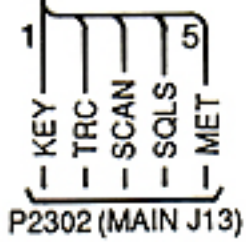
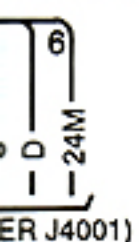
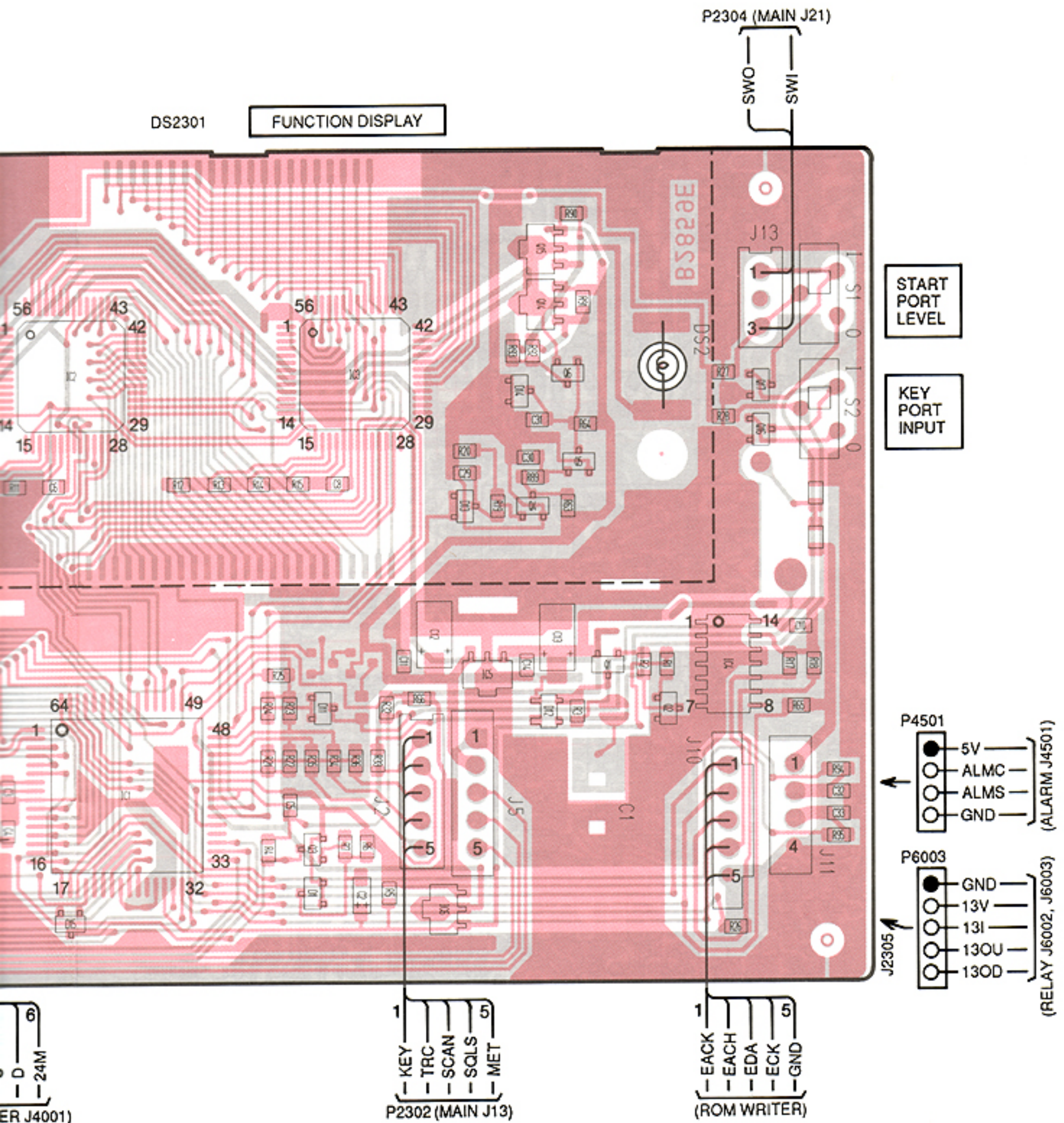




7-2 LOGIC UNIT



NOTE: Add "2300" to each indicated part number on the unit for the actual part number.

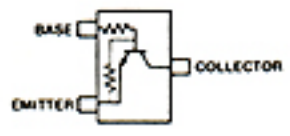


2SB798 DL
(Symbol: DL)



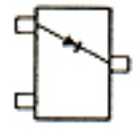
Q2314, Q2315

RN1403
(Symbol: XC)



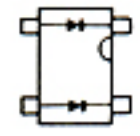
Q2316, Q2317

1SS193
(Symbol: F3)



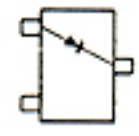
D2301, D2302, D2303,
D2311, D2313, D2315

1SS319
(Symbol: A4)



D2312

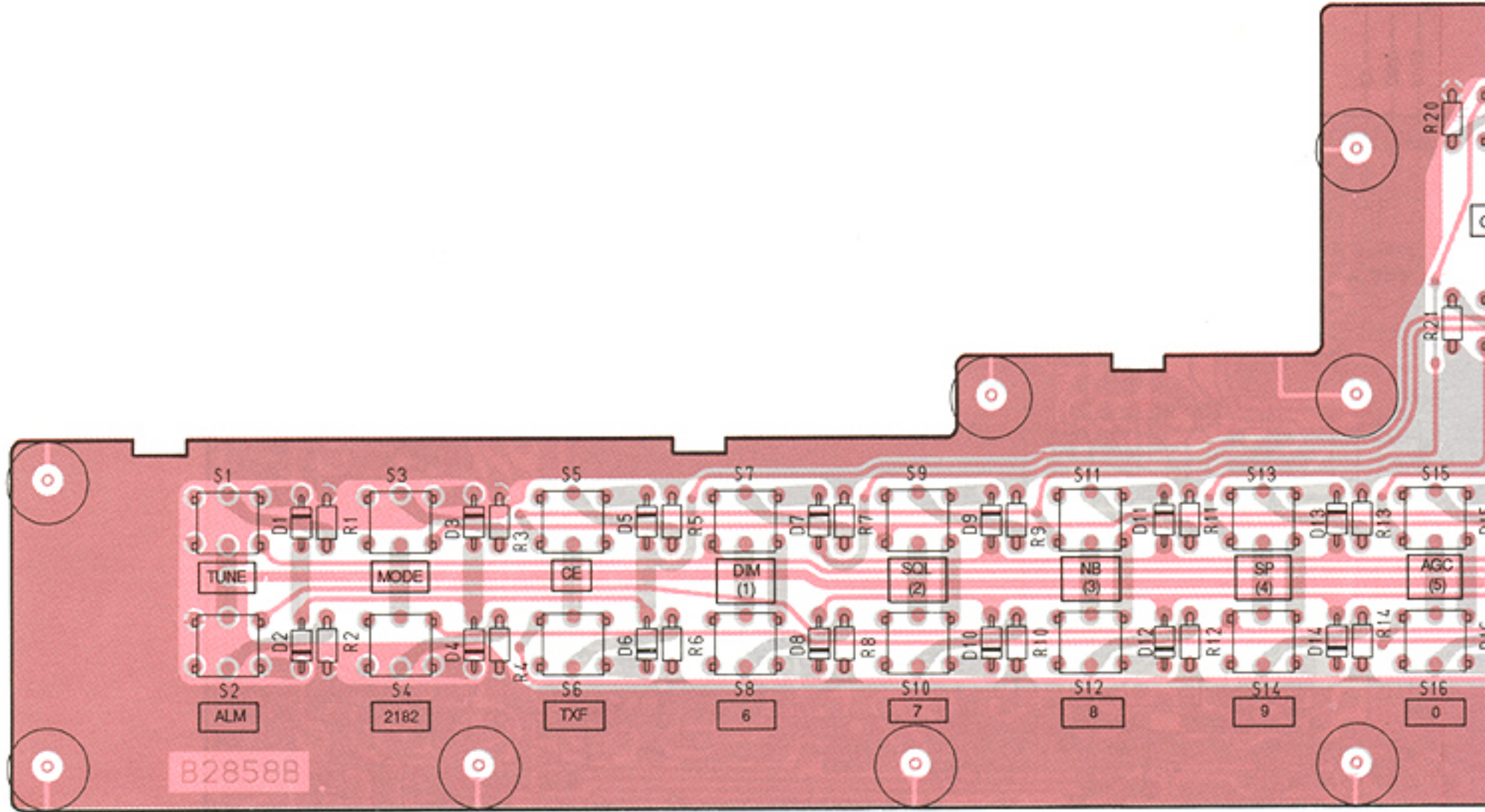
RD11M B1
(Symbol: 111)



D2314

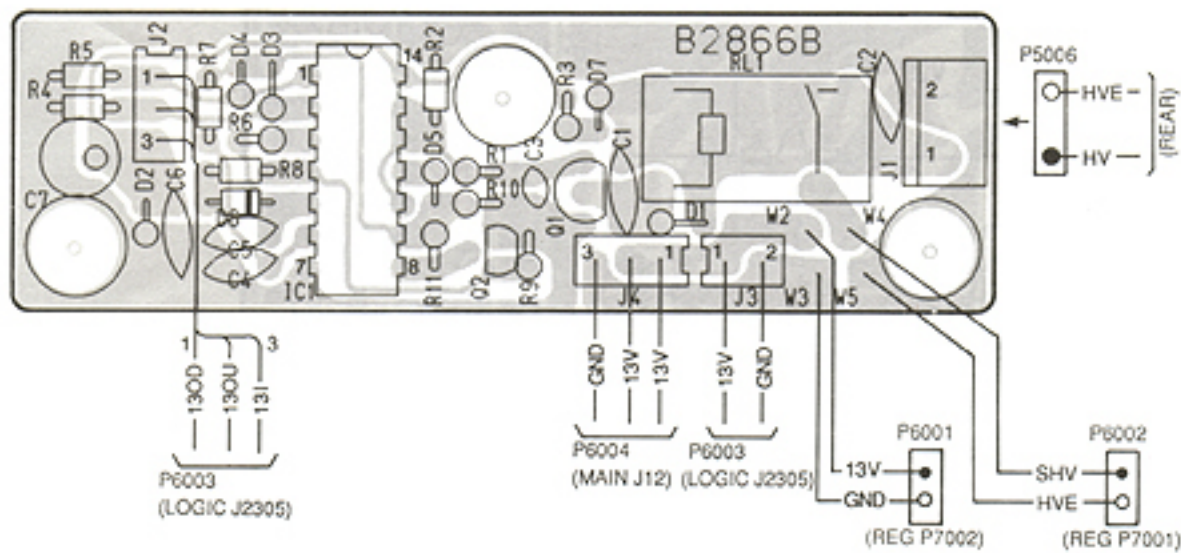
7-3 SW, DIAL, RELAY AND REG UNITS

• SW UNIT



NOTE: Add "2600" to each indicated part number on the unit for the actual part number.

• RELAY UNIT



NOTE: Add "6000" to each indicated part number on the unit for the actual part number.

2SC2878



Q6001

RN1204



Q6002

• R

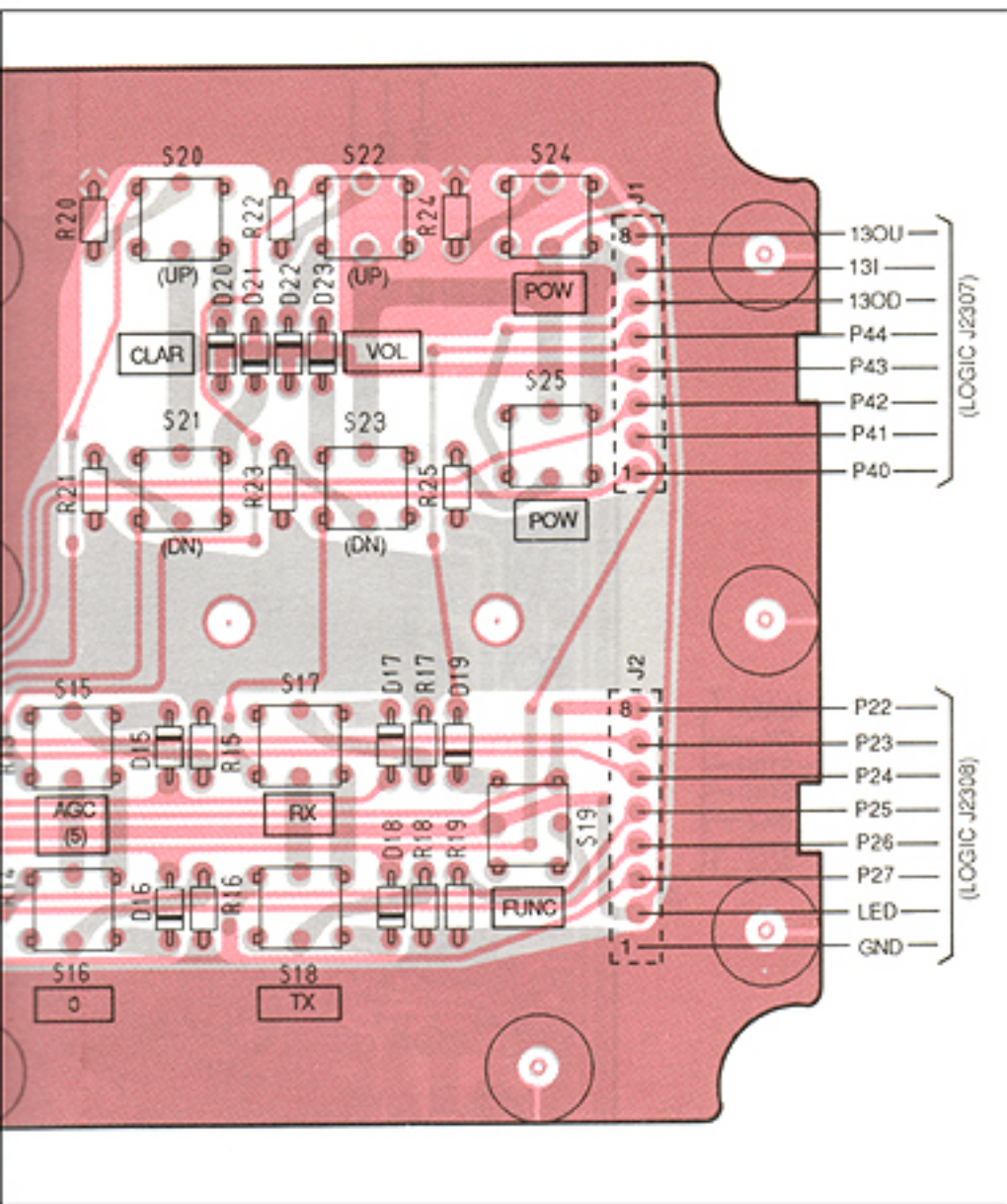
P7

(REL

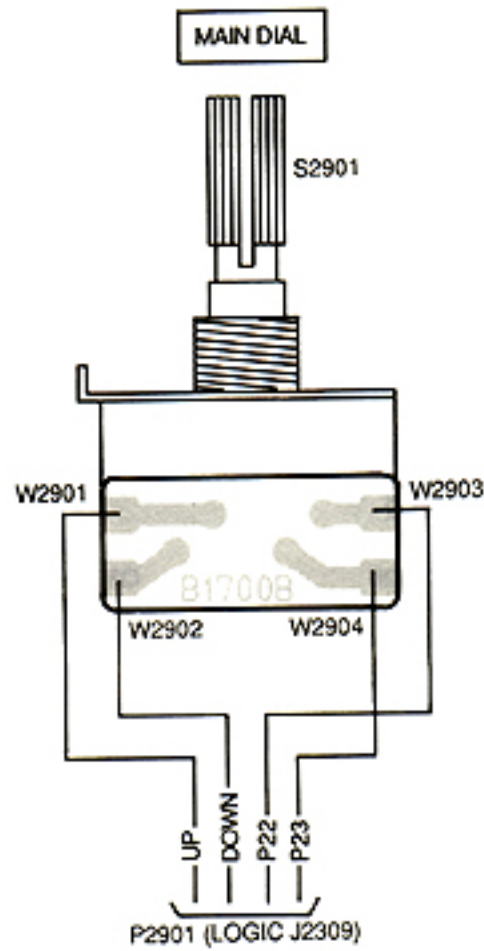
P7

(REL

NOT

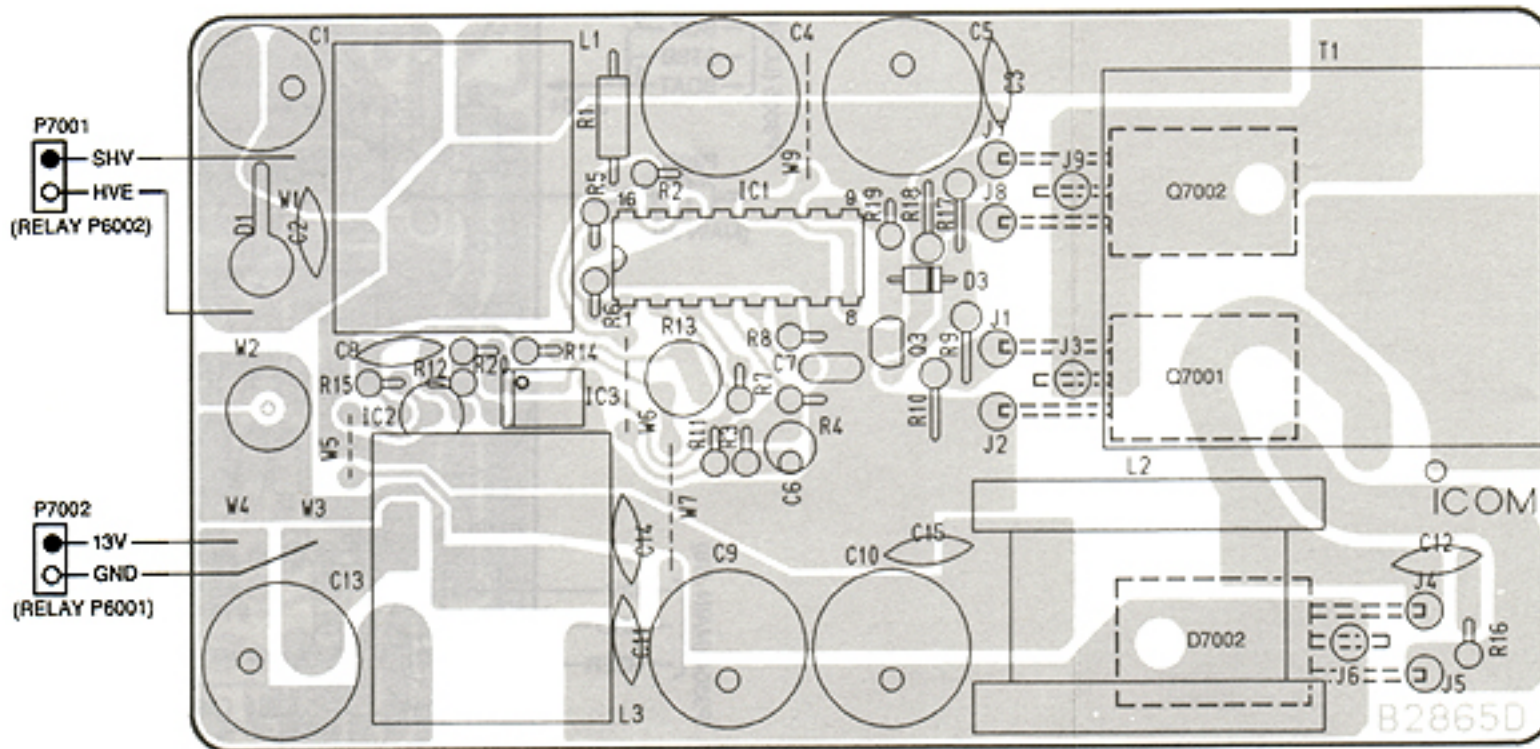


• DIAL UNIT

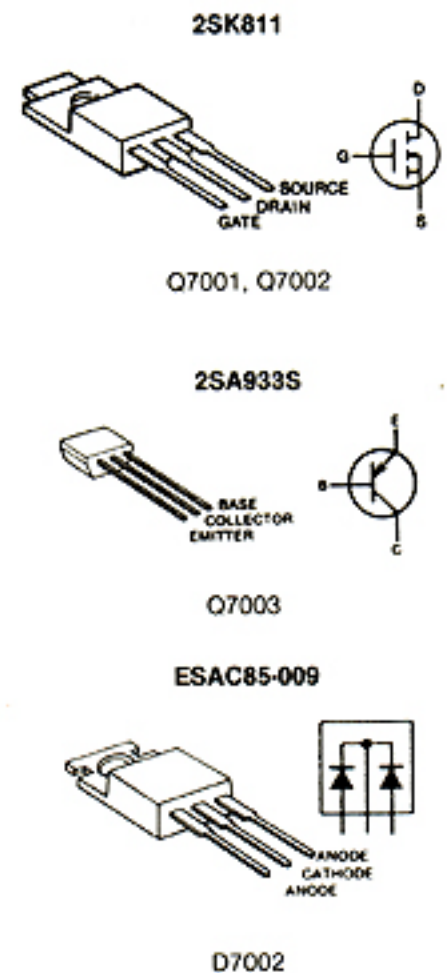


NOTE: Add "2900" to each indicated part number on the unit for the actual part number.

• REG UNIT



NOTE: Add "7000" to each indicated part number on the unit for the actual part number.



7-4 PLL UNIT AND DDS BOARD

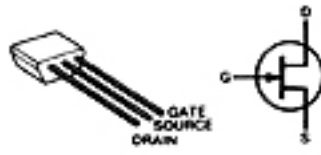
• PLL UNIT

2SC1571



Q3001, Q3002, Q3036

2SK192A



Q3003, Q3004, Q3005,
Q3006, Q3019

RN1202



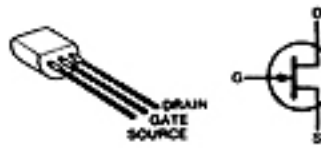
Q3007, Q3008, Q3009,
Q3010, Q3015, Q3016

2SC2668



Q3011, Q3012, Q3013,
Q3014, Q3017, Q3018,
Q3020, Q3021, Q3022,
Q3023, Q3024, Q3025,
Q3026, Q3027

2SK125



Q3028

2SC2458



Q3030, Q3033, Q3040

2SA1048



Q3031, Q3034

2SC2785



Q3032, Q3038

2SK30ATM



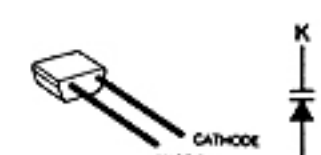
Q3035

2SC3327

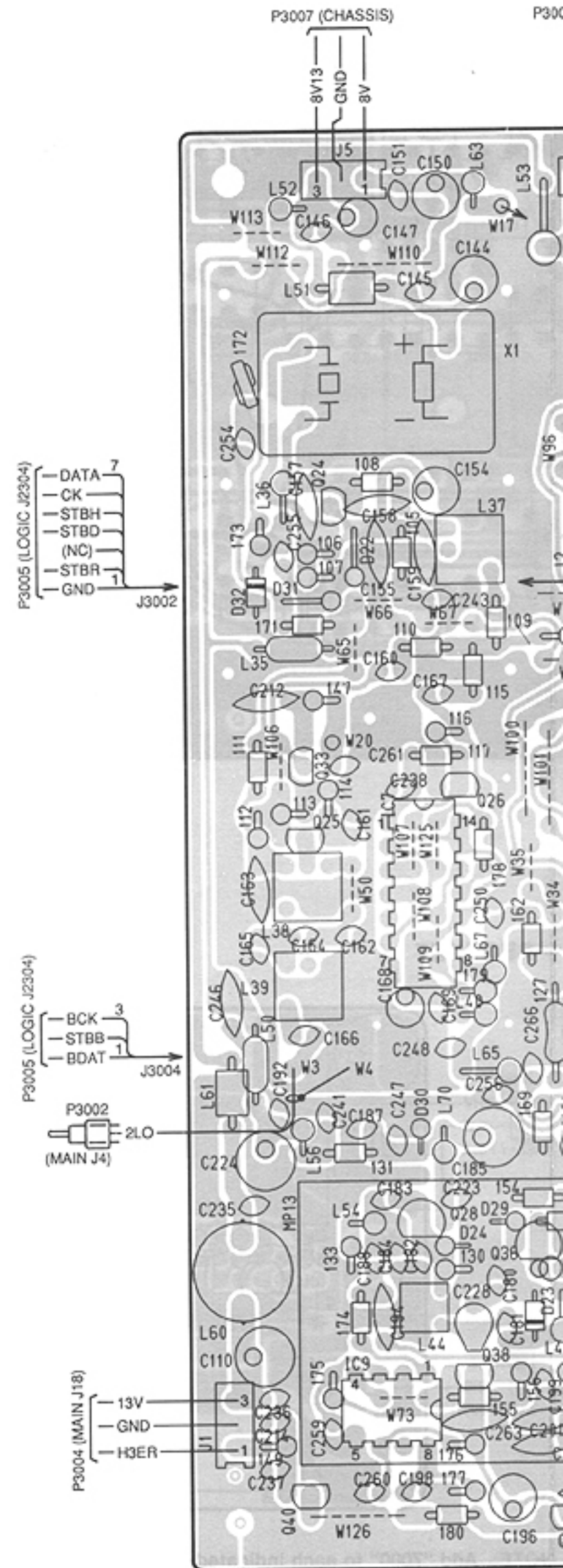


Q3039

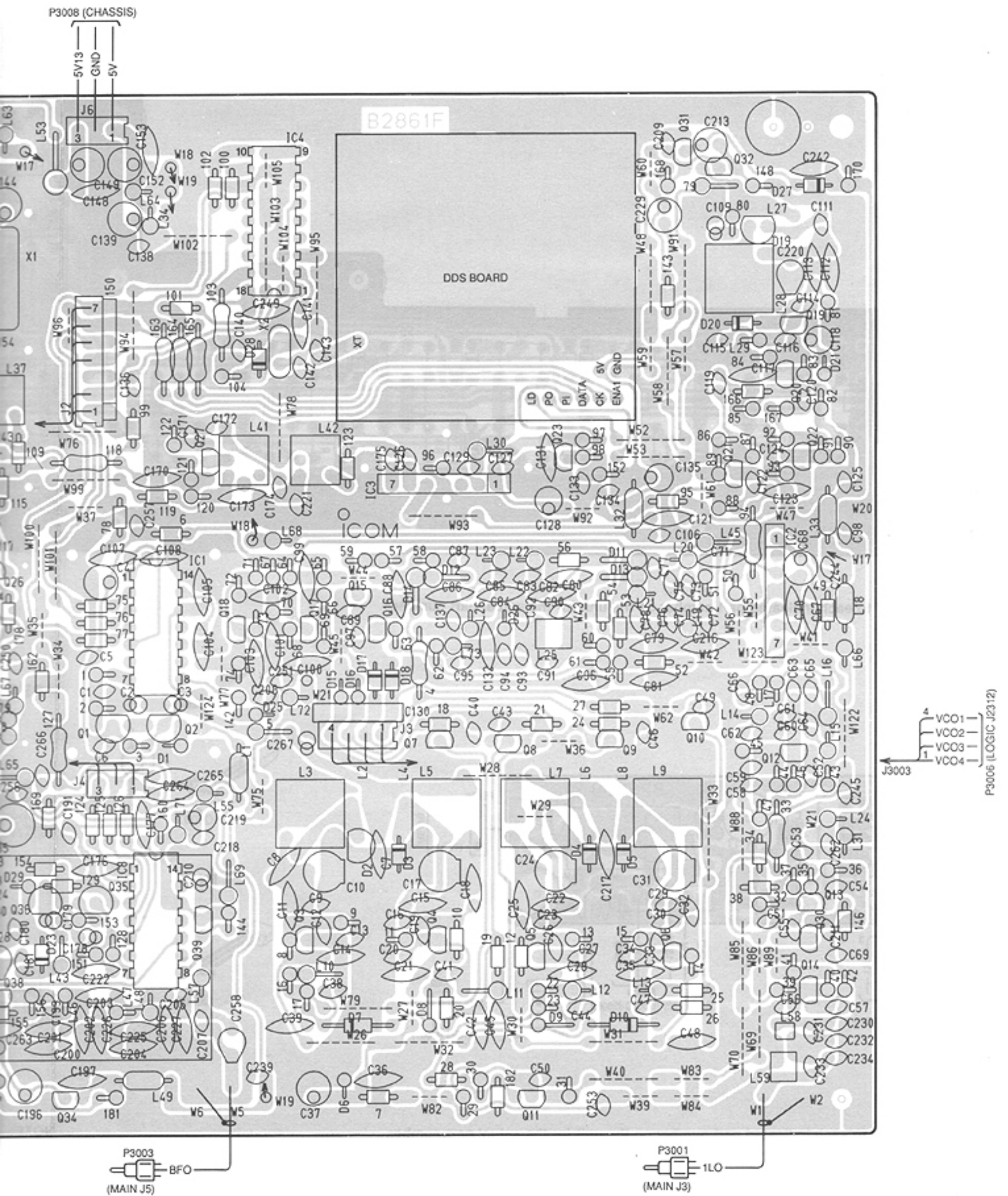
FC52M



D3002, D3019



NOTE: Add "3000" to each indicated part number

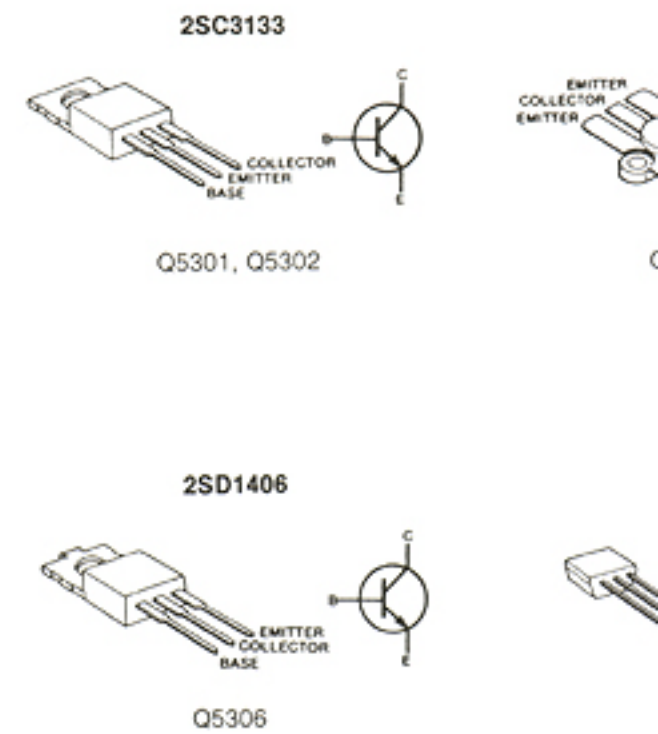
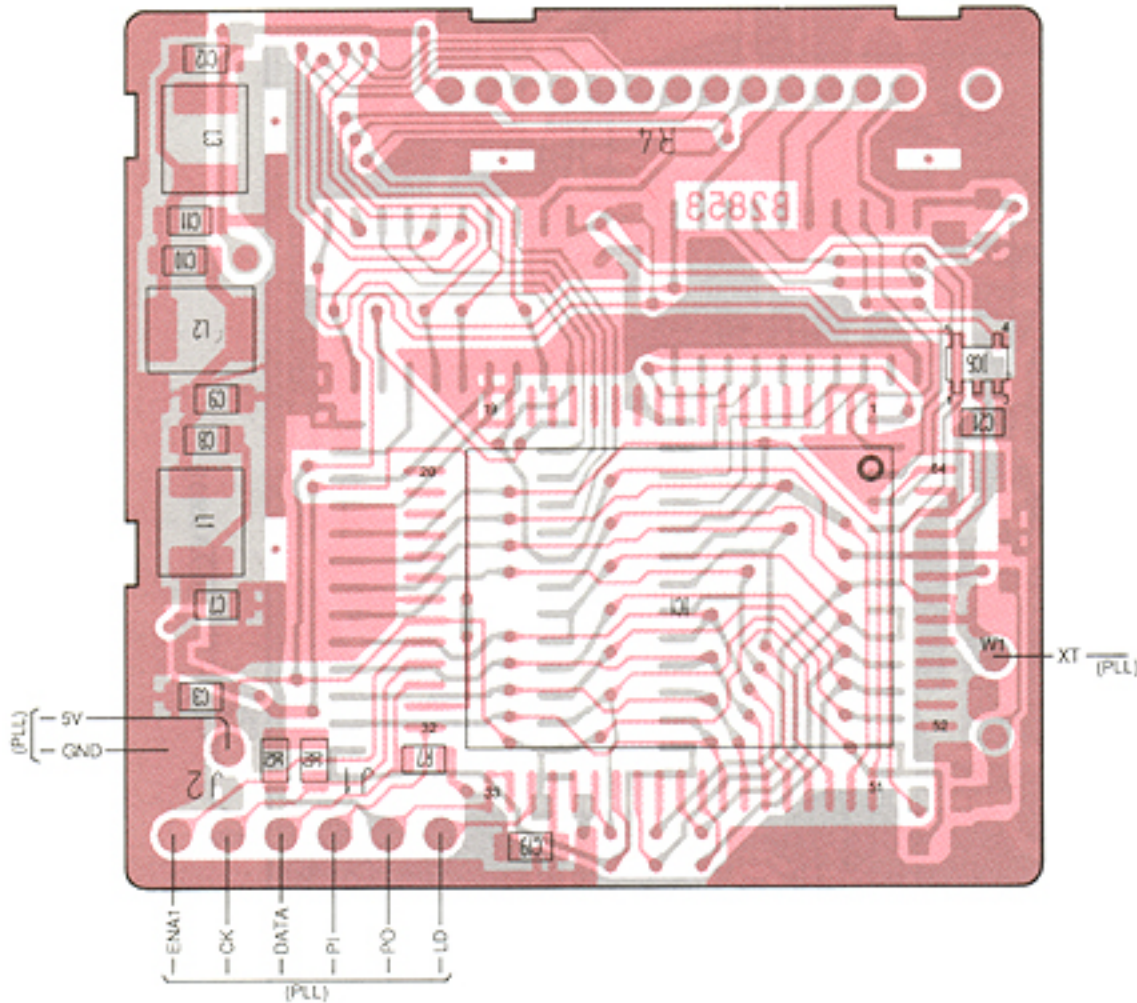
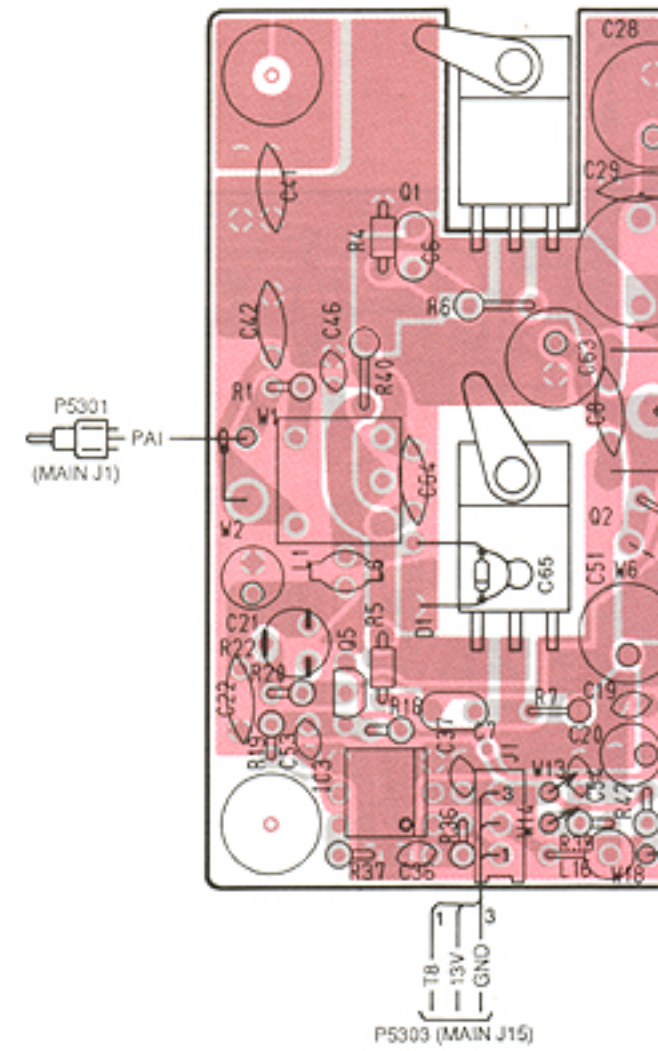
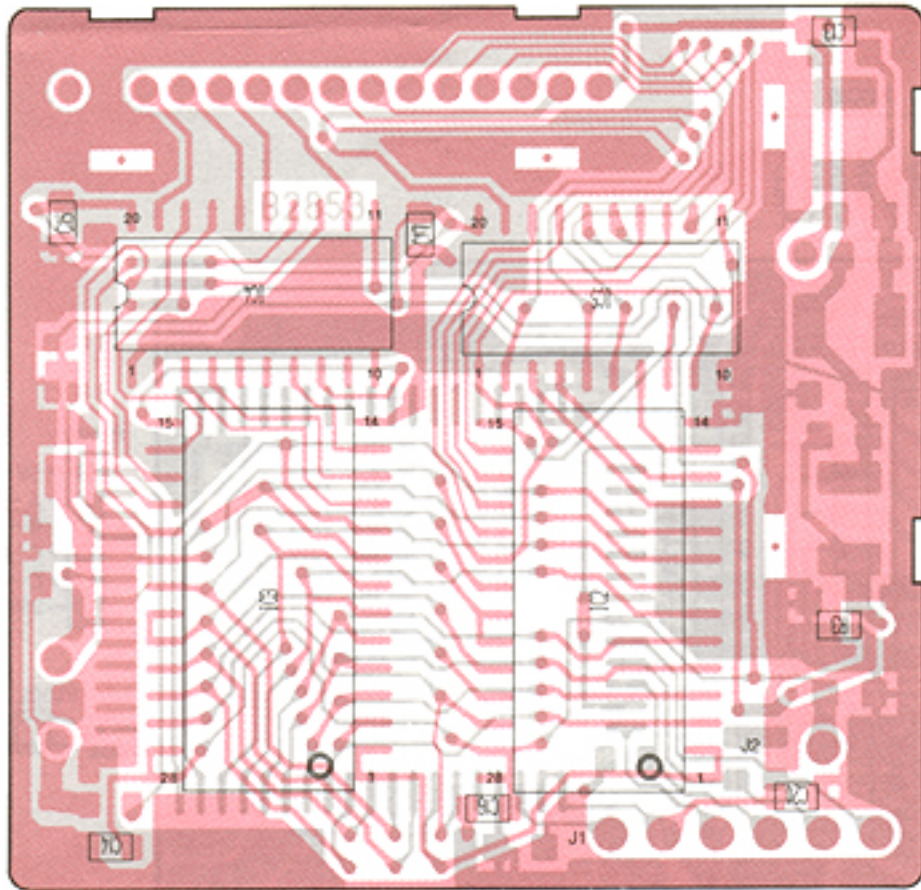


number on the unit for the actual part number.

7-5 PA AND MIC UNITS

• DDS BOARD

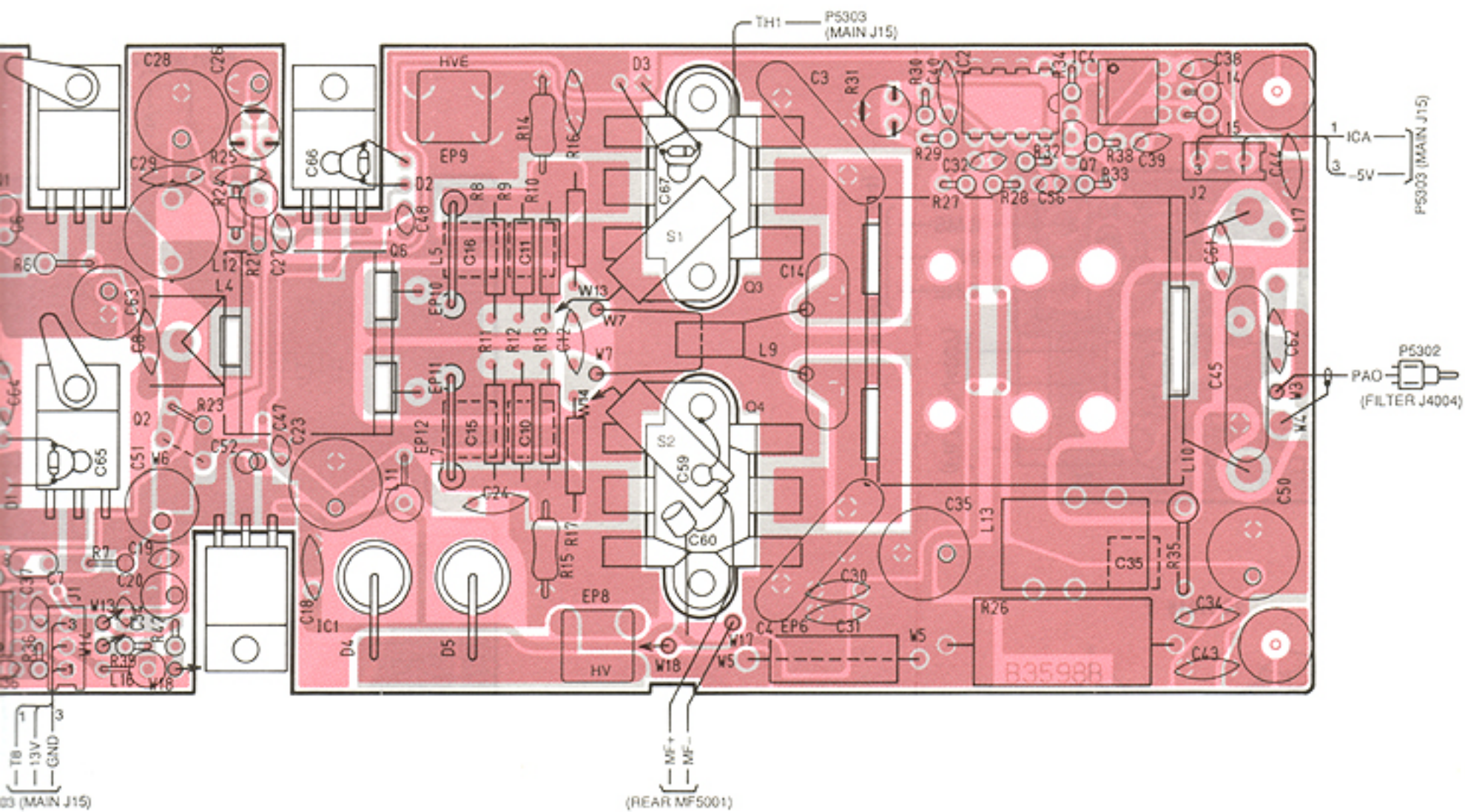
• PA UNIT



NOTE: Add "5300" to each indicated part number.

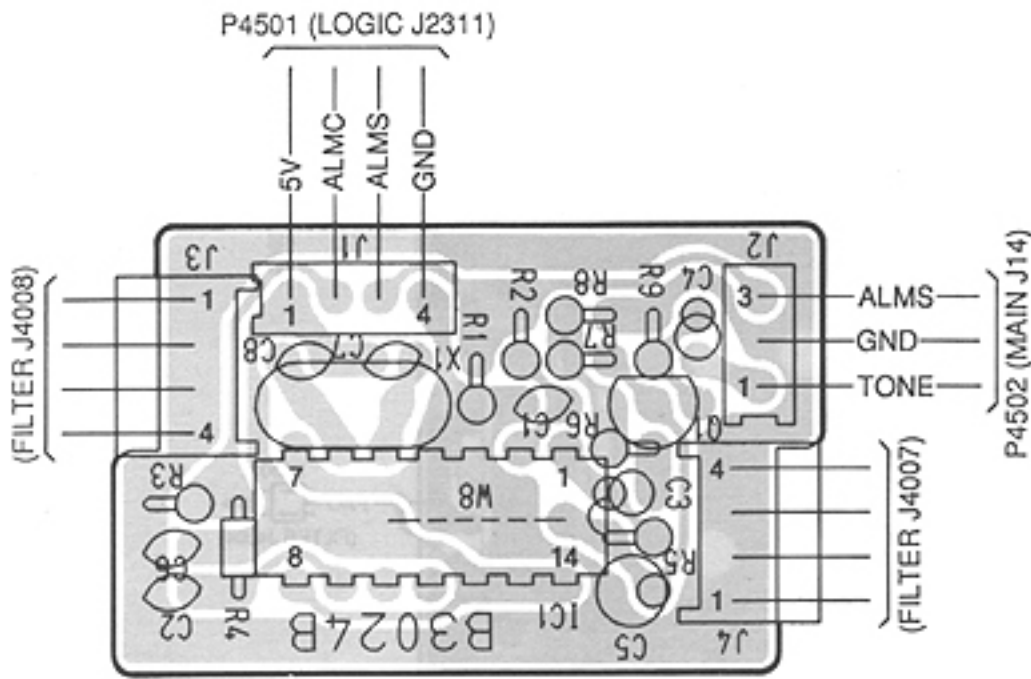
NOTE: Add "3500" to each indicated part number on the unit for the actual part number.

NITS

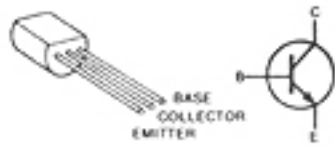


7-6 FILTER AND ALARM UNITS

• ALARM UNIT



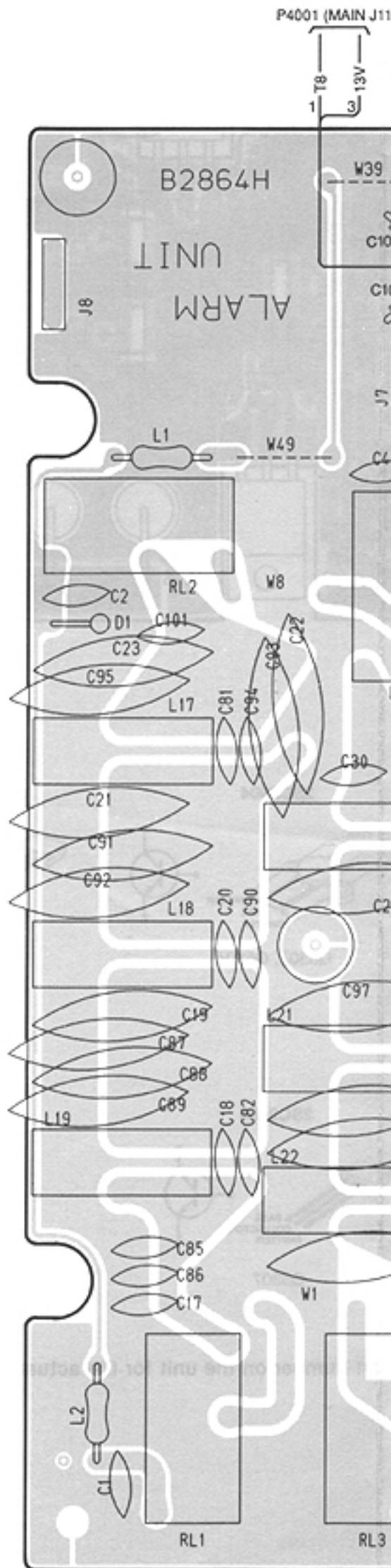
2SC1815 Y



Q4501

NOTE: Add "4500" to each indicated part number on the unit for the actual part number.

• FILTER UNIT

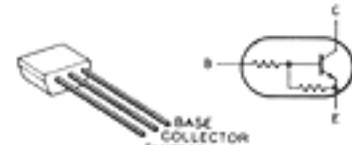


2SC2458



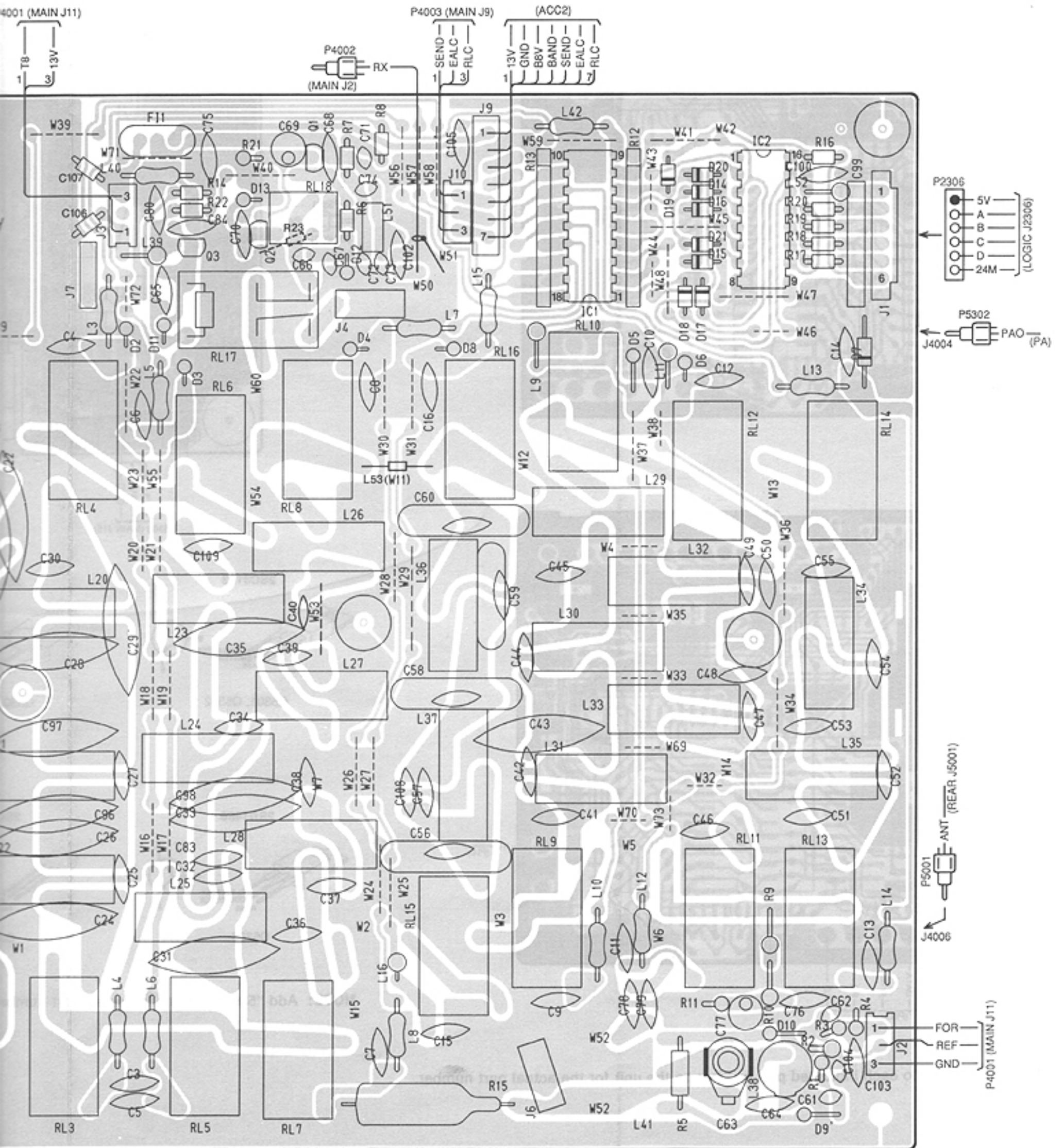
Q4001

RN1202

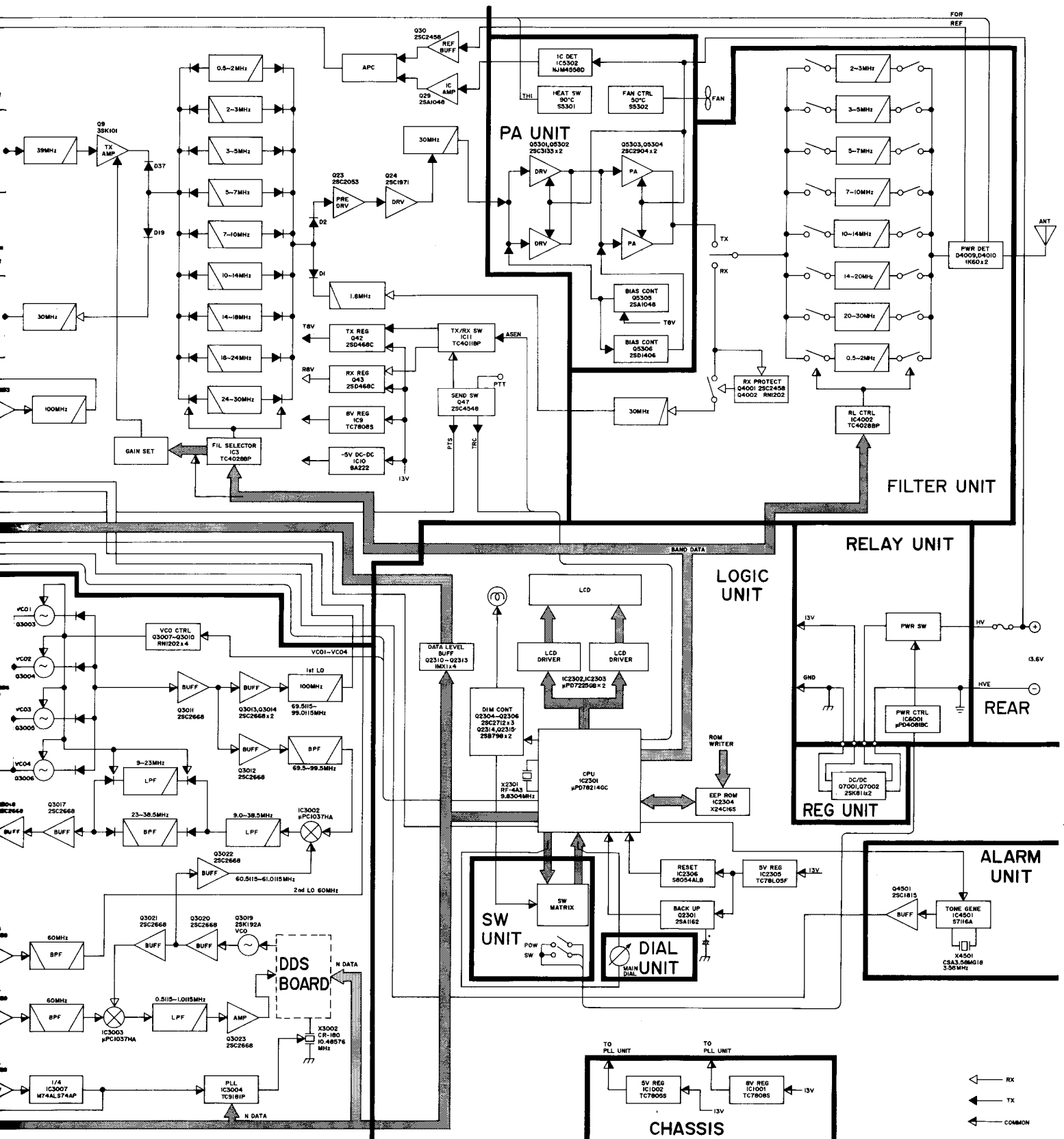


Q4002, Q4003

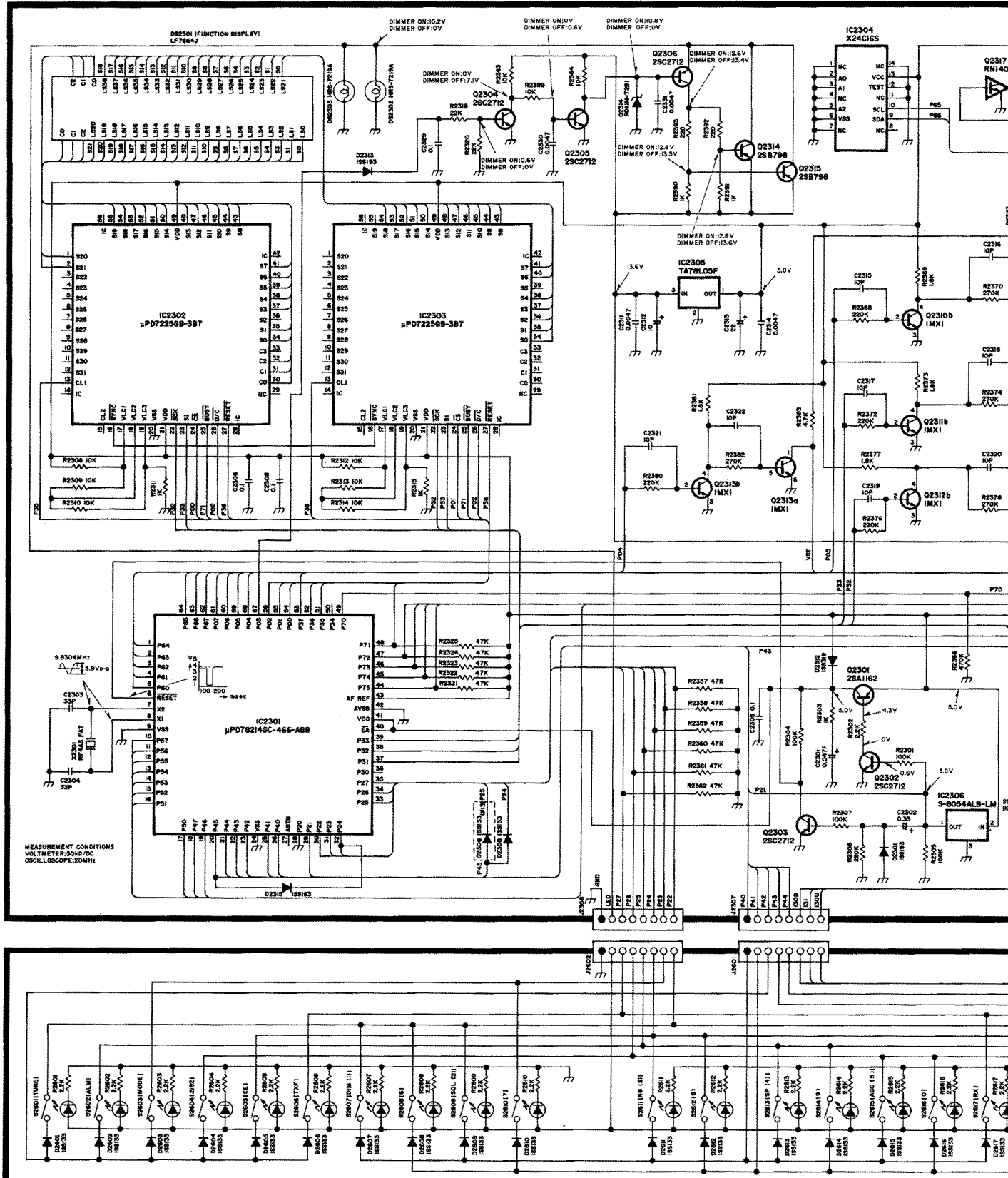
NOTE: Add "4000" to each indicated part number on the u

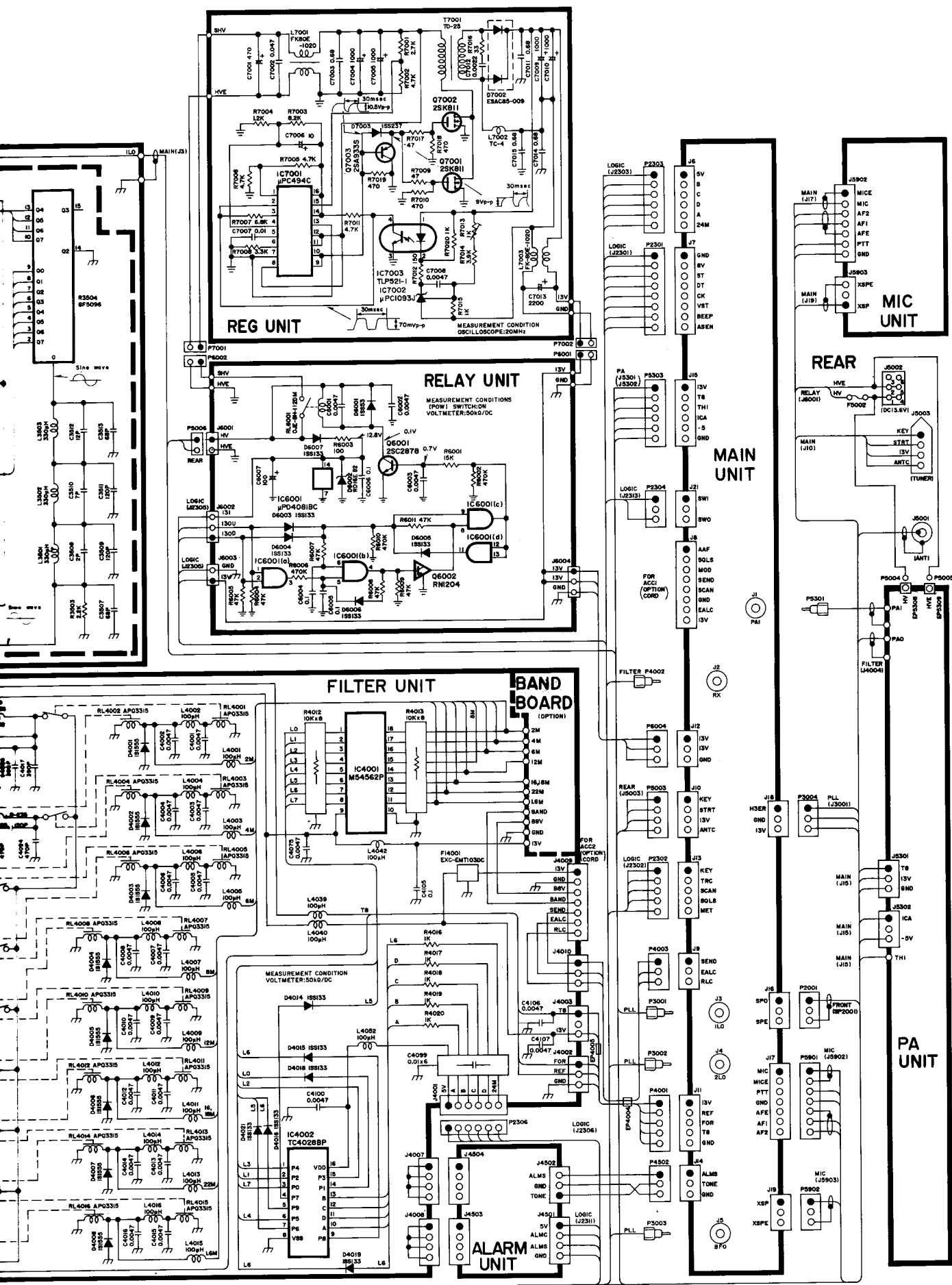


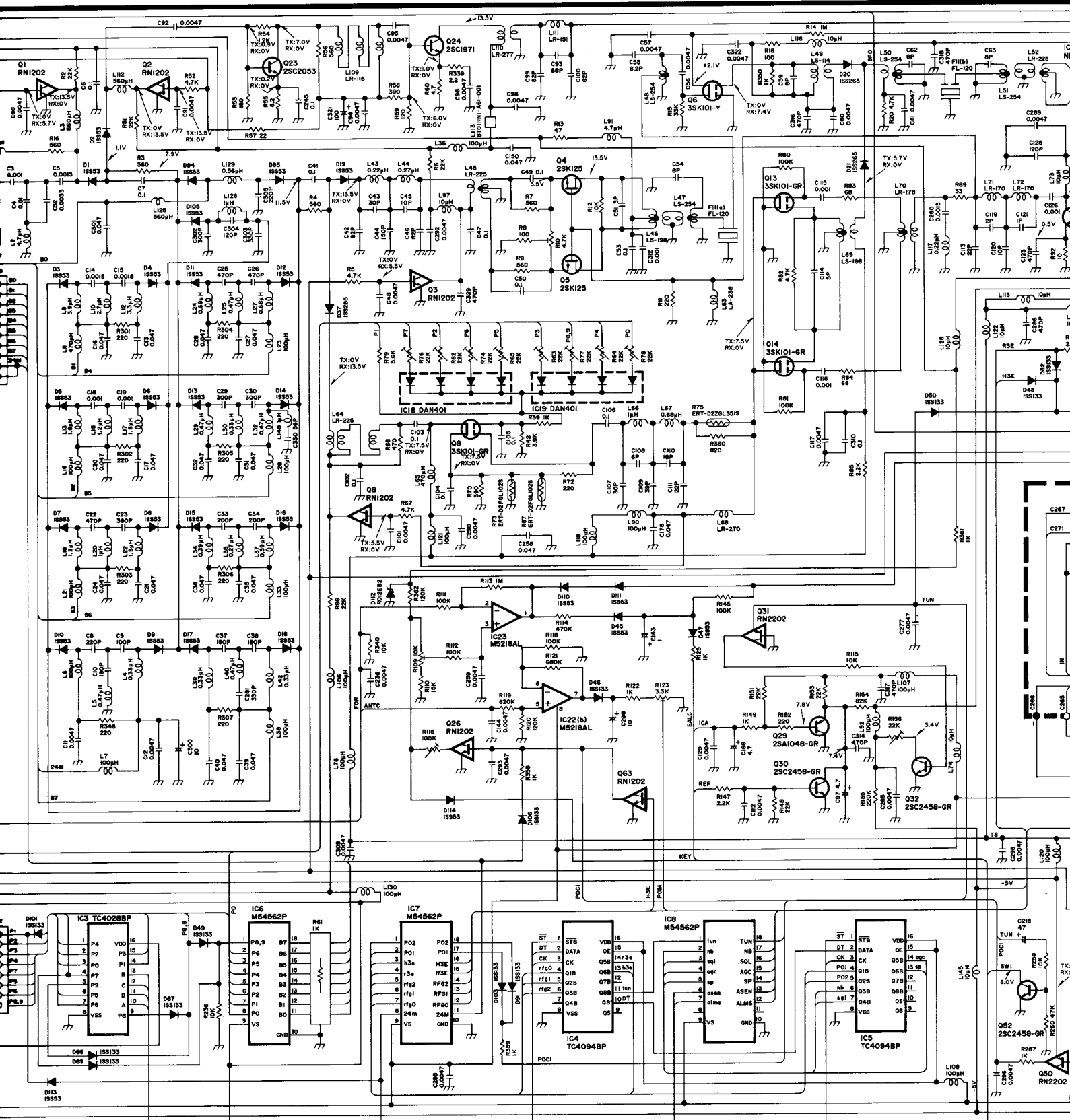
Refer to the unit for the actual part number.

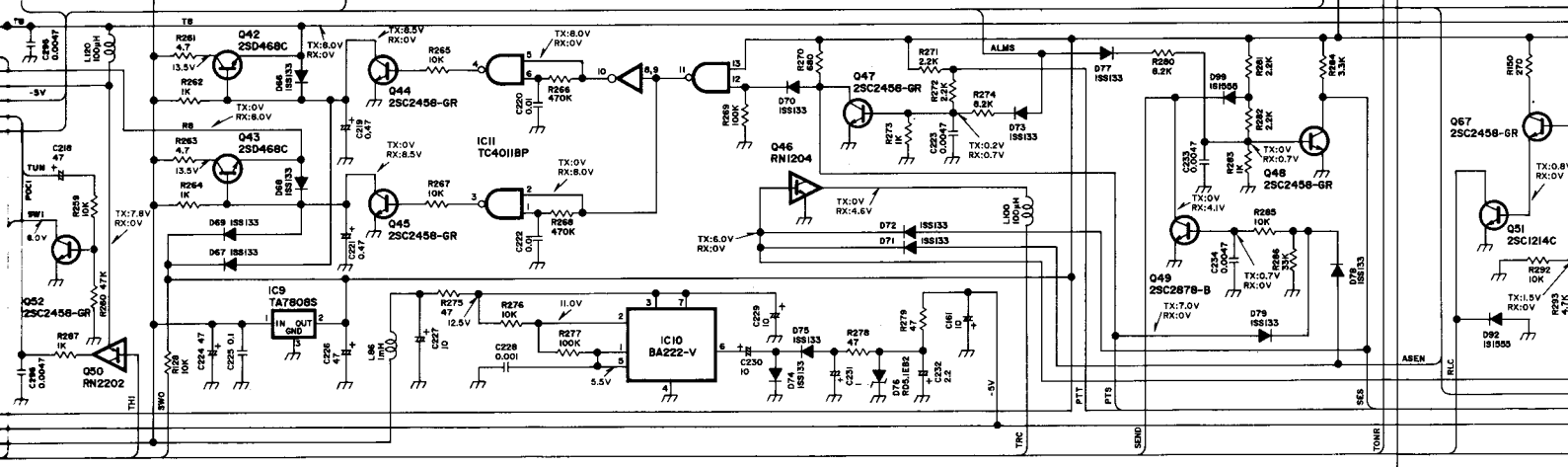
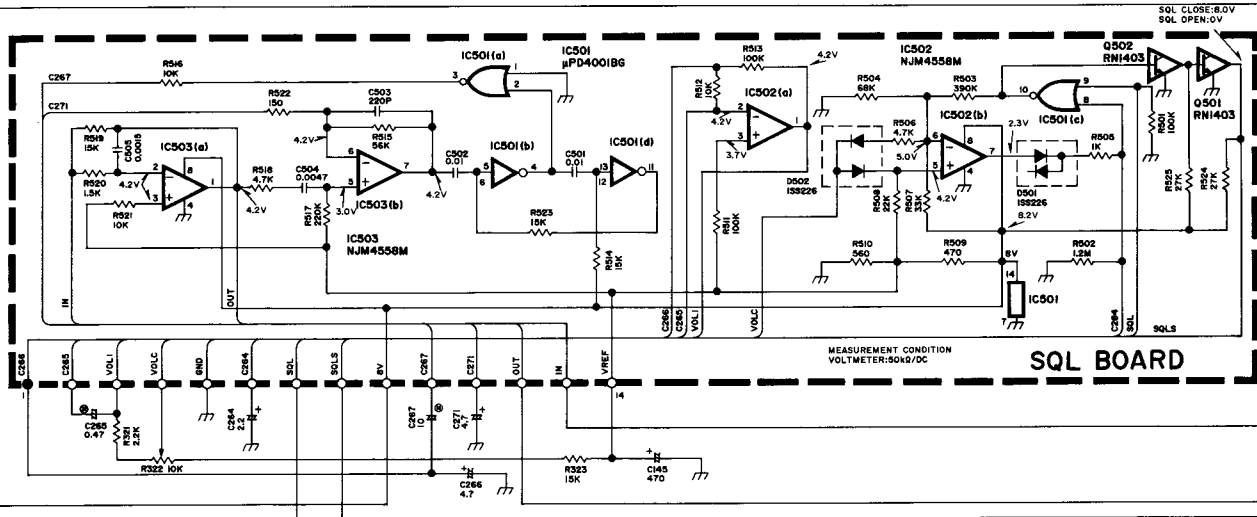
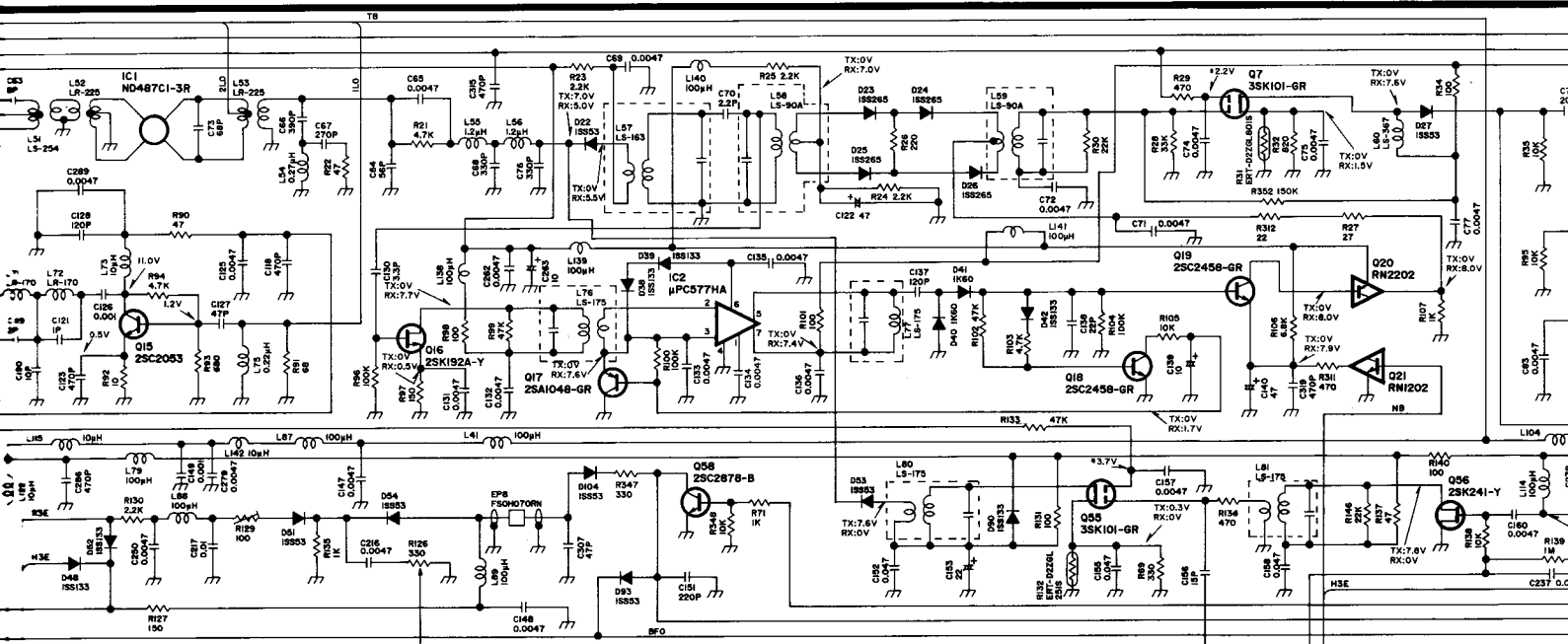


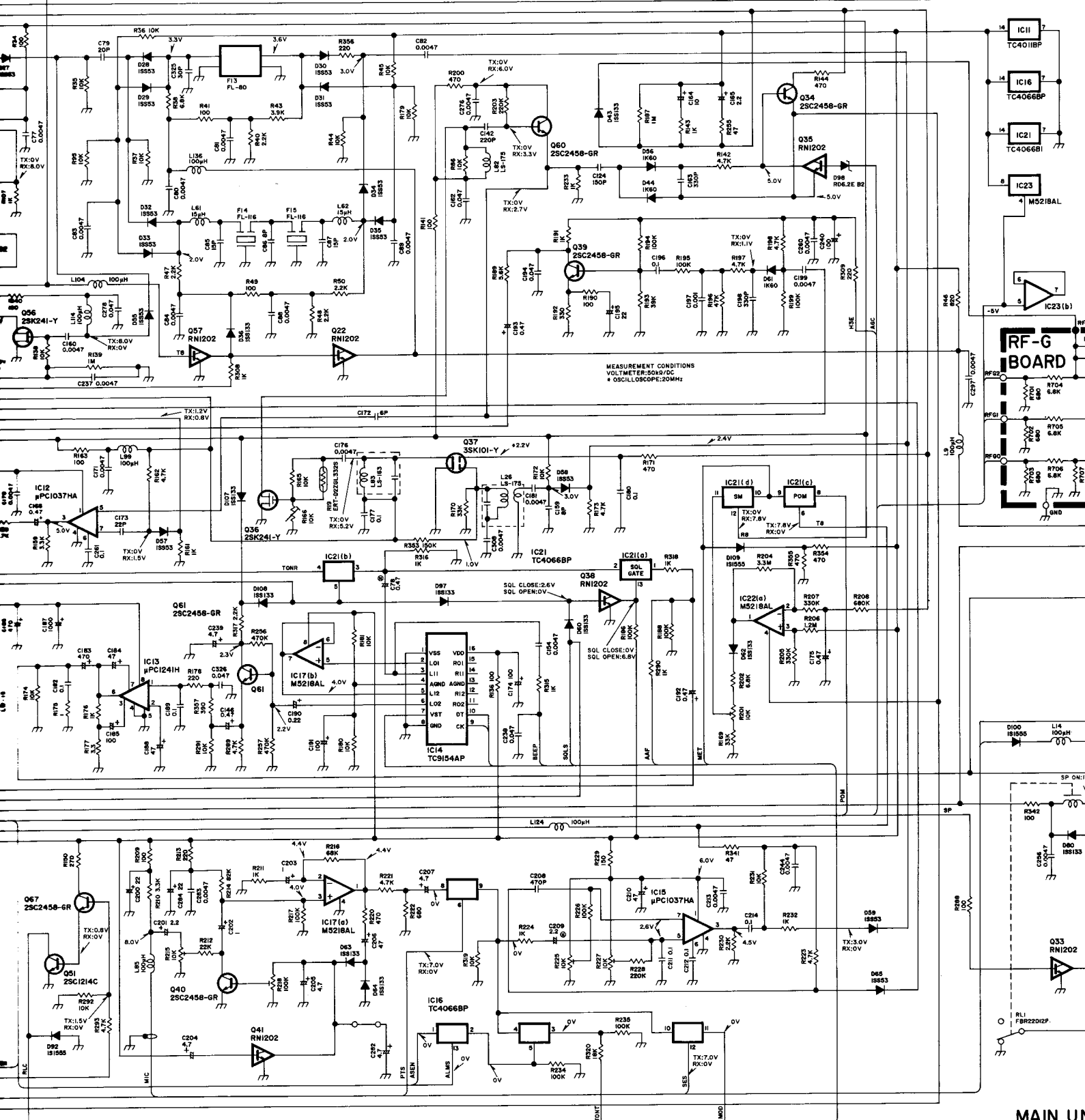
SECTION 9 VOLTAGE DIAGRAM



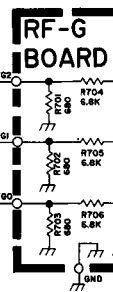








MEASUREMENT CONDITIONS
 VOLTMETER:50kΩ/DC
 OSCILLATOR:20MHz



MAIN UNIT

