

YAESU

FT-5200 FT-6200

DUAL-BAND MOBILE PAGING TRANSCEIVERS

Downloaded by
RadioAmateur.EU



The FT-5200 (for the 2-m & 70-cm bands) and FT-6200 (for the 70-cm & 23-cm bands) are the latest innovations from the originators of mobile cross-band full duplex and detachable front panel design in amateur transceivers. New miniaturization technology allows improvements such as a built-in antenna duplexer, dual full-frequency liquid crystal display (with signal strength/power output bargraphs for each band), 8-level automatic display/button lighting dimmer, and dual external speaker jacks (one for each band). An efficient thermally-switched cooling fan allows up to 50 watts on the 2-meter band (FT-5200), 35 watts on the 70-cm band, and 10-watts on the 23-cm band (FT-6200). Thirty-two freely tunable memories (sixteen per band) offer complete programmability and scanning features, such as independent transmit and receive frequencies, programmable repeater offsets and scan limits, selectable scan resume modes and memory skip, priority monitoring and 1-touch instant-recall CALL channels for each band. Channel steps are user-selectable, and Automatic Repeater Shift can be activated to automatically set standard repeater shifts when tuning to repeater subbands. Versions are available with microphone button control of a 1750-Hz burst generator (with the MH-26_{DS} or MH-26_{ES} Speaker/Mic), vfo/memory or band selection.

When the front panel is connected through an optional cable the transceiver can be installed separately from the panel. Alternatively, the MW-1 Wireless Microphone/Controller option duplicates the controls (including volume and squelch), adding a DTMF (Dual-Tone, Multi-Frequency) keypad and microphone. With the FRC-4 Paging/Selcall option you can select a 3-digit ID code and your receiver stays quiet until your code is received (from any DTMF-equipped transceiver). You can have a code open the squelch or a ring like a telephone. PAGE mode displays the caller's code so you know who is calling. Seven 3-digit code memories on each band store your ID plus that of the calling station and those of five other stations or groups for calling/monitoring (autopatching requires the MH-26_{FS} DTMF keypad microphone or the MH-15_{DS} with its own auto-dial DTMF memories). The DVS-3 Digital Voice/DTMF Pager option includes all of the paging/selcall features of the FRC-4, and also records both received signals and messages for transmission. A built-in 38-tone programmable CTCSS (Continuous Tone-Coded Squelch System) encoder is supplied as standard in both models, and CTCSS tone squelch operation on both bands is available with the FTS-22 Dual Band CTCSS Decoder option, which also provides a telephone-type CTCSS Bell alerting function.

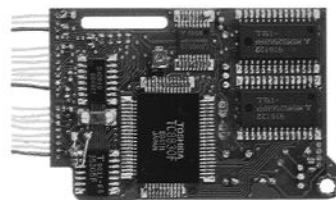


FT-5200/-6200

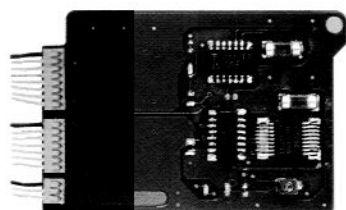
DUAL-BAND MOBILE PAGING TRANSCEIVERS



AD-3



DVS-3



FRC-4



FTS-22



MW-1



SP-7



YSK-1/1L



MH-26 D8

OPTIONS

- AD-3 VHF/UHF Duplexer for two-antennas operation w/FT-5200
- DVS-3 Voice Memory Unit
- FRC-4 Pager Unit
- FTS-22 CTCSS Unit
- MH-26_{D8} ... Hand Microphone with Burst Button
- MH-26_{ES} ... Hand Speaker/Microphone with Burst Button
- MH-26_{F8} ... Hand Microphone with DTMF Key pad
- MW-1 Remote Control Microphone
- SP-7 External Speaker
- YSK-1 Remote Mounting Kit w/Bracket, 3m Cable, Speaker Cable
- YSK-1L Remote Mounting Kit w/Bracket, 6m Cable, Speaker Cable



MH-26 ES



MH-26 F8

● Some accessories may be supplied as standard per local regulations or operating requirements.

SPECIFICATIONS

FT-5200

FT-6200

GENERAL

Frequency Range:
 Standard Repeater Shift:
 Channel Steps:
 Frequency Stability (0 to +50°C):
 Mode of Emission:
 Antenna Impedance:
 Supply Voltage:
 Current Consumption Receive:
 Current Consumption Transmit:
 Operating Temperature Range:
 Case Size (WHD):
 Weight (approx.):

See Model Chart
 See Model Chart
 5, 10, 12.5, 15, 20 & 25 kHz
 better than ±5 ppm
 F3
 50 ohms, unbalanced
 13.8 V DC ±15%, negative ground
 600 mA
 2 m, 11.5/ 4.0 A (high/low)
 70 cm, 9.0/ 3.5 A (high/low)
 -20 to +60 °C
 140 x 40 x 155 mm (w/o knobs)
 1.0 kg

See Model Chart
 See Model Chart
 (5), 10, 12.5, (15), 20 & 25 kHz
 (): except 23 cm band
 better than ±1.5 ppm
 F3
 50 ohms, unbalanced
 13.8 V DC ±15%, negative ground
 600 mA
 70 cm, 9.0/ 3.5 A (high/low)
 23 cm, 4.2/ 2.0 A (high/low)
 70 cm, -20 to +60 °C
 23 cm, -10 to +60 °C
 140 x 40 x 155 mm (w/o knobs)
 1.0 kg

RECEIVER

Circuit Type:
 Intermediate Frequencies:
 Sensitivity (12 dB SINAD):
 Selectivity (-6/-60 dB)
 Image Rejection:
 Squelch Sensitivity:
 Maximum AF Output:
 AF Output Impedance:

Double conversion superheterodyne
 2 m, 17.7 MHz & 455 kHz
 70 cm, 22.5 MHz & 455 kHz
 better than 0.158 µV
 12 / 24 kHz
 better than 65 dB
 at least 0.1 µV
 3.0 W into 4 ohms @ 5% THD
 4 to 16 ohms

Double conversion superheterodyne
 70 cm, 22.5 MHz & 455 kHz
 23 cm, 58.3 MHz & 455 kHz
 70 cm, better than 0.158 µV
 23 cm, better than 0.2 µV
 12 / 24 kHz
 better than 60 dB
 at least 0.1 µV
 3.0 W into 4 ohms @ 5% THD
 4 to 16 ohms

TRANSMITTER

RF Output Power:
 Modulation Type:
 Maximum Deviation:
 Spurious Radiation:
 Microphone Impedance:

2 m, 50 / 5 W (high/low)
 70 cm, 35 / 5 W (high/low)
 Variable Reactance
 ±5 kHz
 less than -60 dB
 2 kilohms

70 cm, 35 / 5 W (high/low)
 23 cm, 10 / 1 W (high/low)
 Variable Reactance
 ±5 kHz
 less than -60 dB
 2 kilohms

Specifications subject to change without notice.

FT-5200 MODEL CHART

Version	A1	B1	C1	D
Frequency Range (MHz)	144-148 430-450	144-146 430-440	144-146 430-440	144-146 432-438
Std. Rptr Shift	±600 kHz ±5 MHz	±600 kHz ±7.6 MHz	±600 kHz ±1.6 MHz	±600 kHz ±1.6 MHz

FT-6200 MODEL CHART

Version	A1	B1	C1	D1
Frequency Range (MHz)	430-450 1240-1300	430-440 1240-1300	430-440 1240-1300	432-438 1240-1300
Std. Rptr Shift	±5 MHz Programmable	±7.6 MHz Programmable	±1.6 MHz Programmable	±1.6 MHz Programmable



YAESU MUSEN CO., LTD.

C.P.O. BOX 1500, TOKYO, JAPAN

YAESU U.S.A.

17210 Edwards Rd., Cerritos, California 90701 U.S.A.

YAESU EUROPE B.V.

Snipweg 3, 1118AA Schiphol, The Netherlands

Downloaded by RadioAmateur.EU