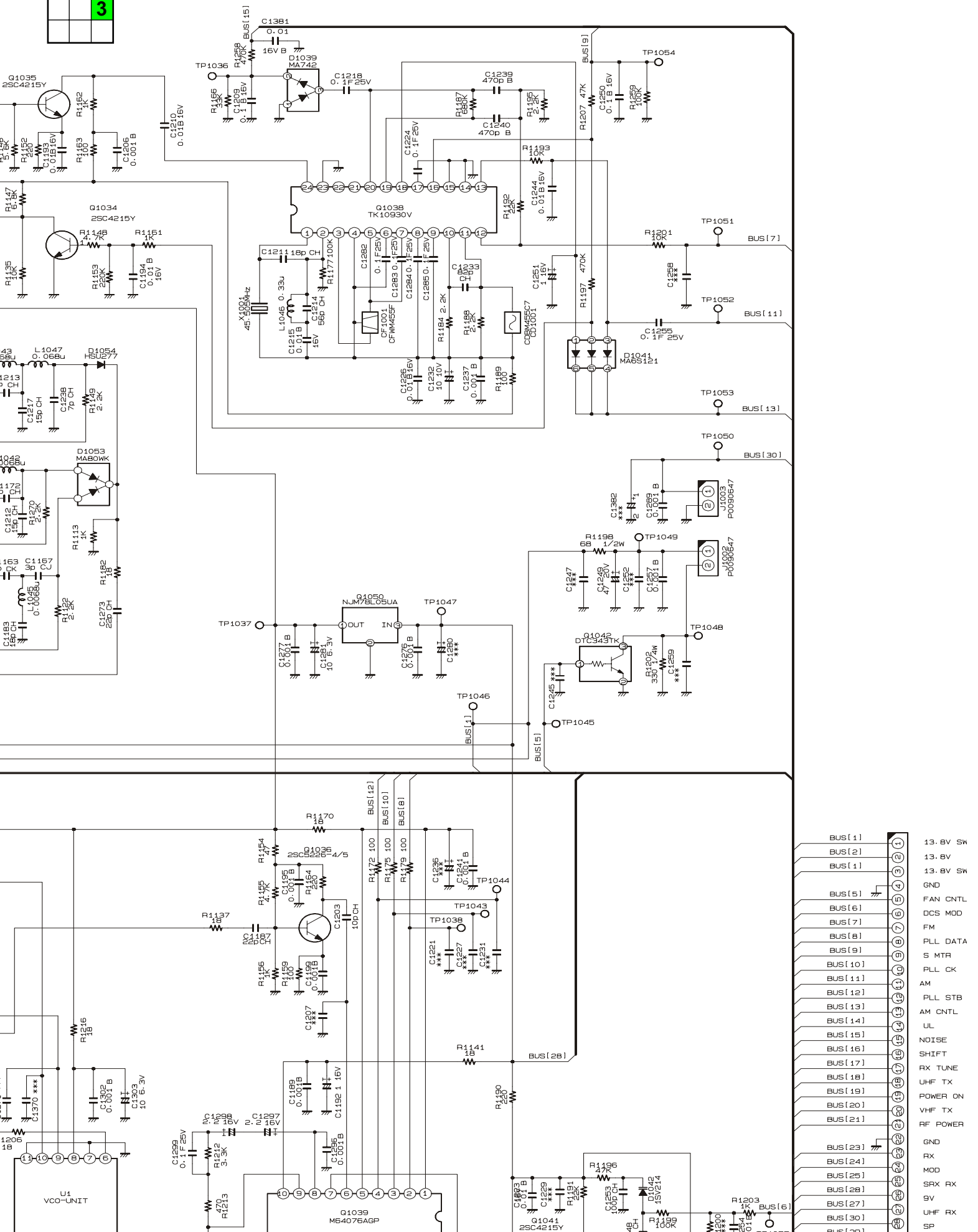
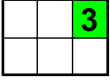
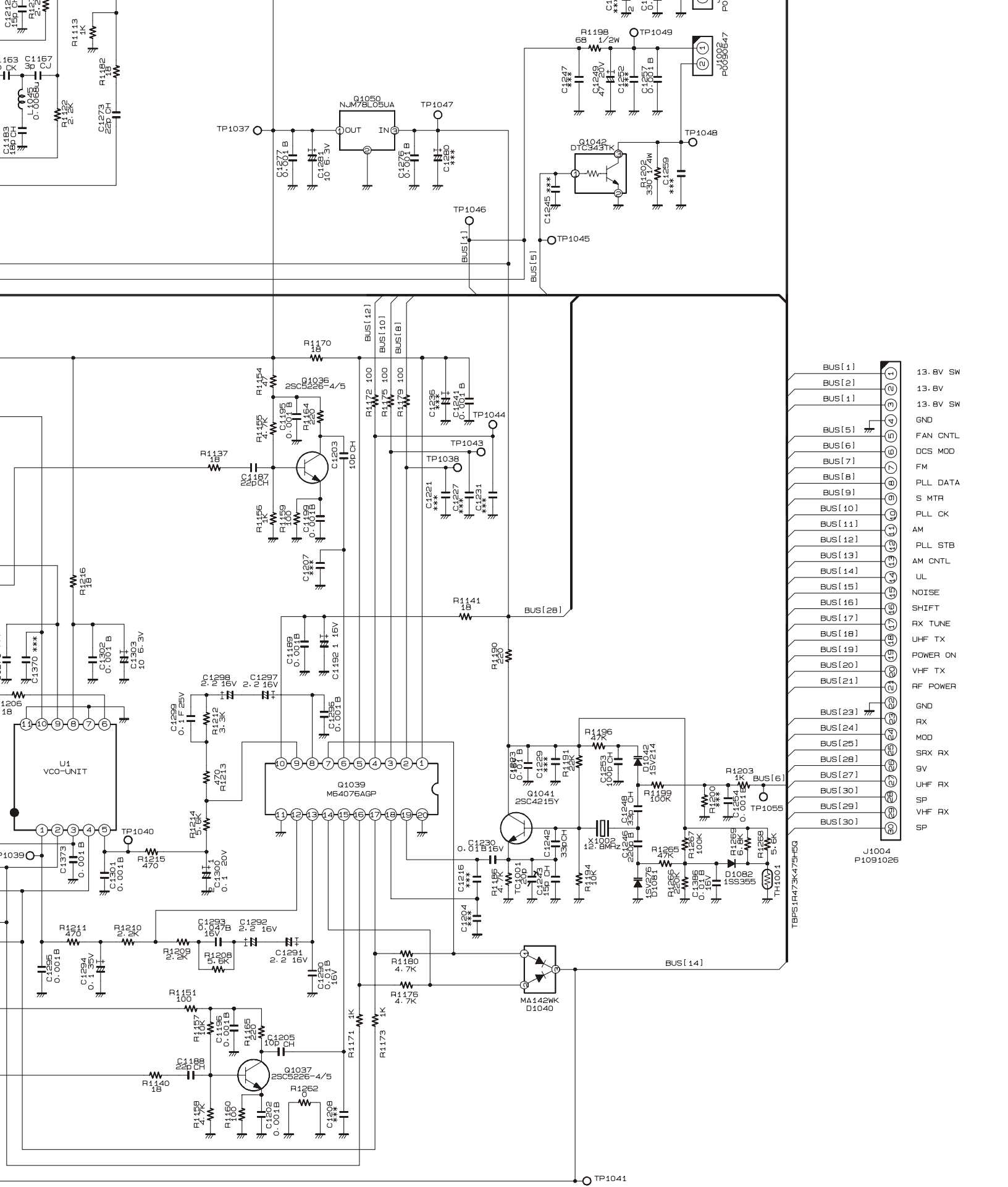


FT-90R MAIN Unit



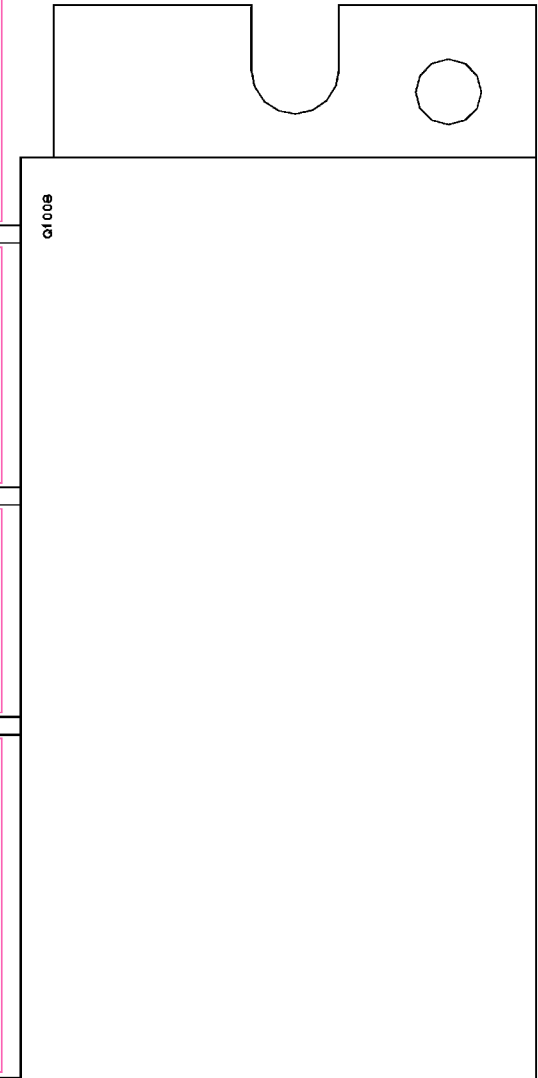
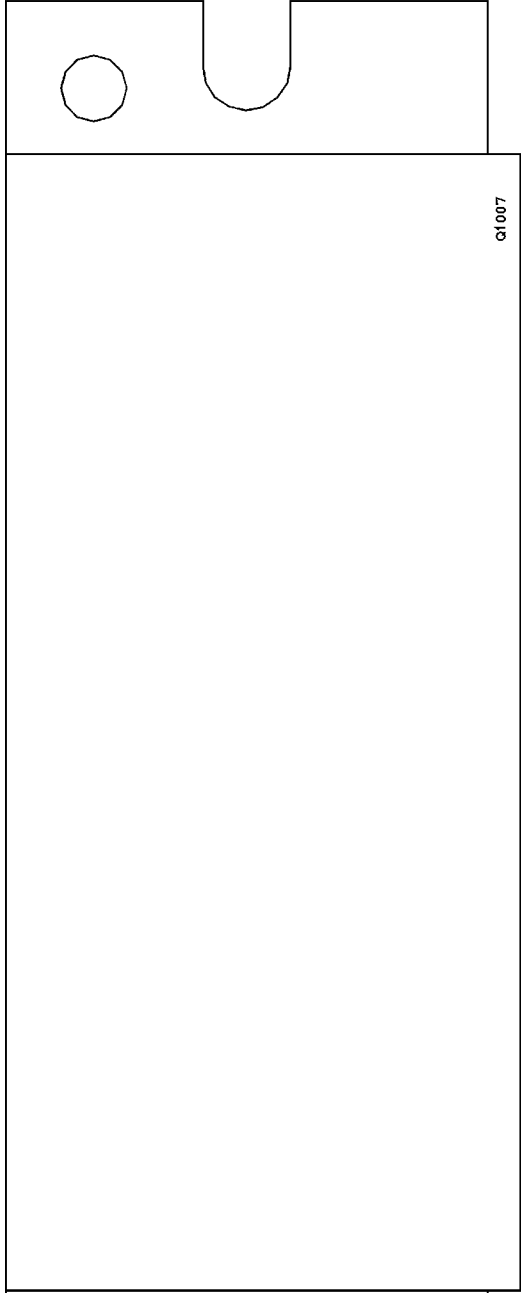
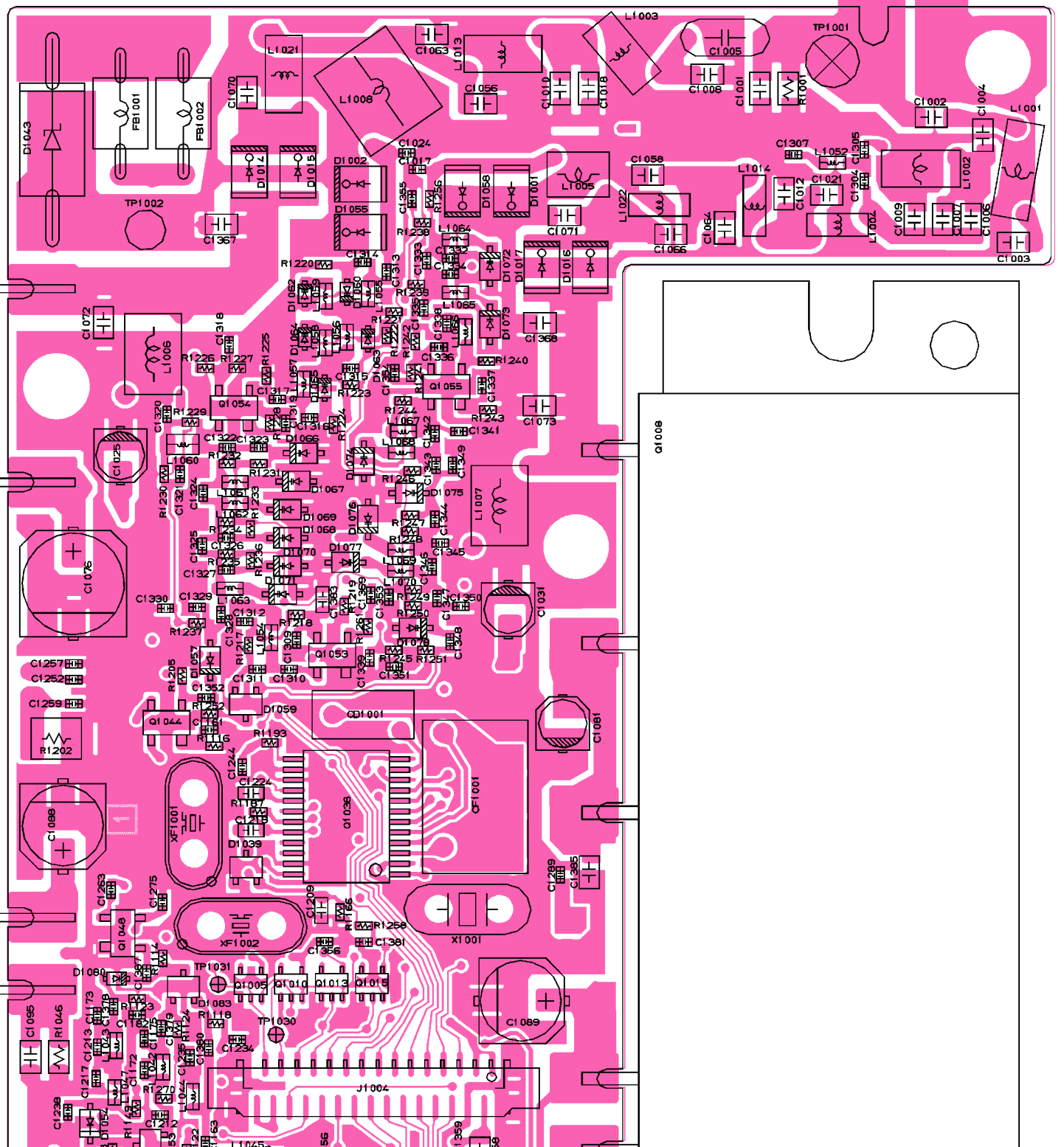
- | | |
|---------|----------|
| BUS[1] | 13.8V SW |
| BUS[2] | 13.8V |
| BUS[1] | 13.8V SW |
| | GND |
| BUS[5] | FAN CNTL |
| BUS[6] | DCS MOD |
| BUS[7] | FM |
| BUS[8] | PLL DATA |
| BUS[9] | S MTR |
| BUS[10] | PLL CK |
| BUS[11] | AM |
| BUS[12] | PLL STB |
| BUS[13] | AM CNTL |
| BUS[14] | UL |
| BUS[15] | NOISE |
| BUS[16] | SHIFT |
| BUS[17] | RX TUNE |
| BUS[18] | UHF TX |
| BUS[19] | POWER ON |
| BUS[20] | VHF TX |
| BUS[21] | RF POWER |
| BUS[23] | GND |
| BUS[24] | RX |
| BUS[25] | MOD |
| BUS[28] | SRX RX |
| BUS[27] | SV |
| BUS[30] | UHF RX |
| BUS[30] | SP |

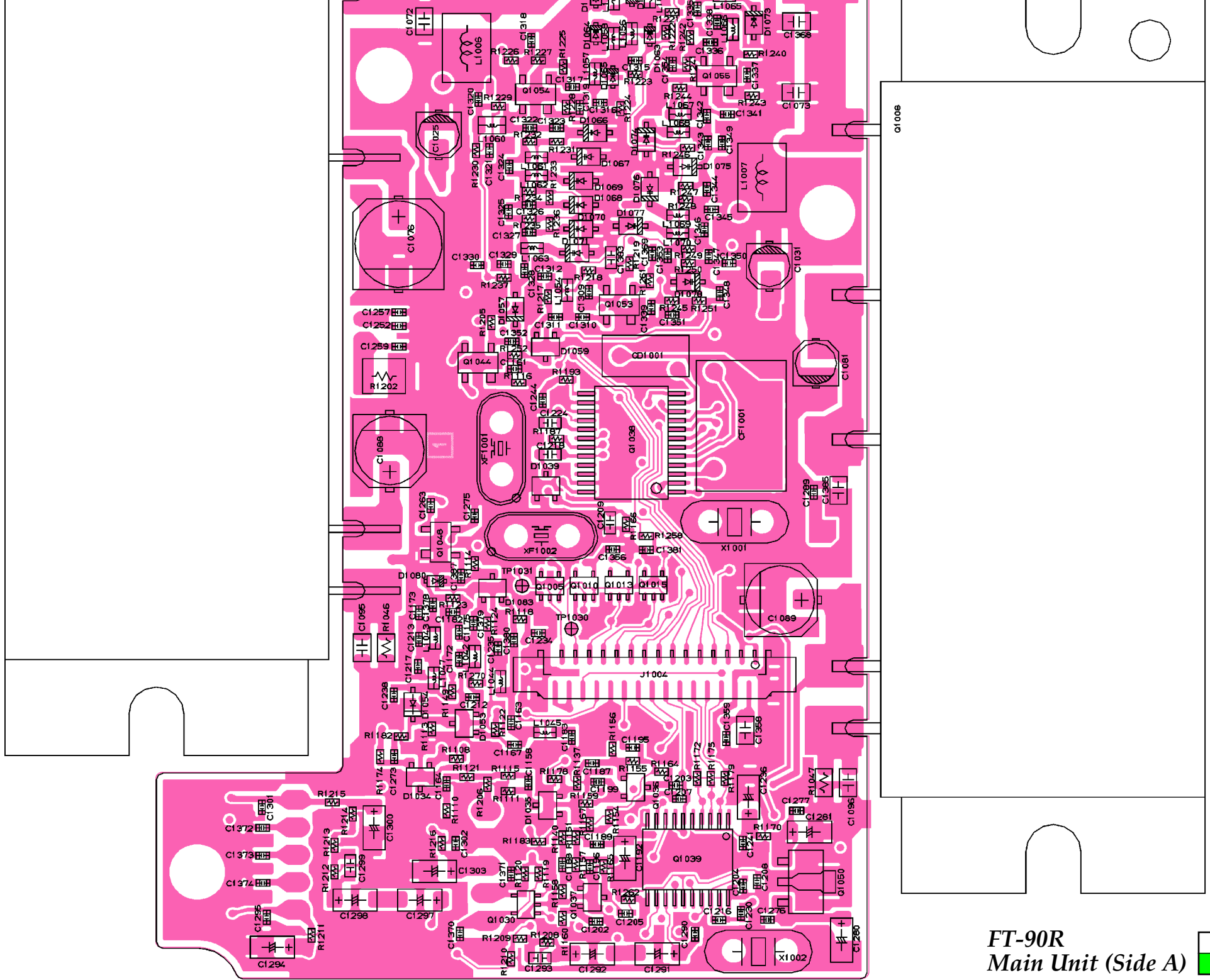


- BUS[1] 13.8V SW
- BUS[2] 13.8V
- BUS[1] 13.8V SW
- GND
- FAN CNTL
- DCS MOD
- FM
- PLL DATA
- S MTR
- PLL CK
- AM
- PLL STB
- AM CNTL
- UL
- NOISE
- SHIFT
- RX TUNE
- UHF TX
- POWER ON
- VHF TX
- RH POWER
- GND
- RX
- MOD
- SRX RX
- SV
- UHF RX
- SP
- VHF RX
- SP

FT-90R
Main Unit (Side A)

1

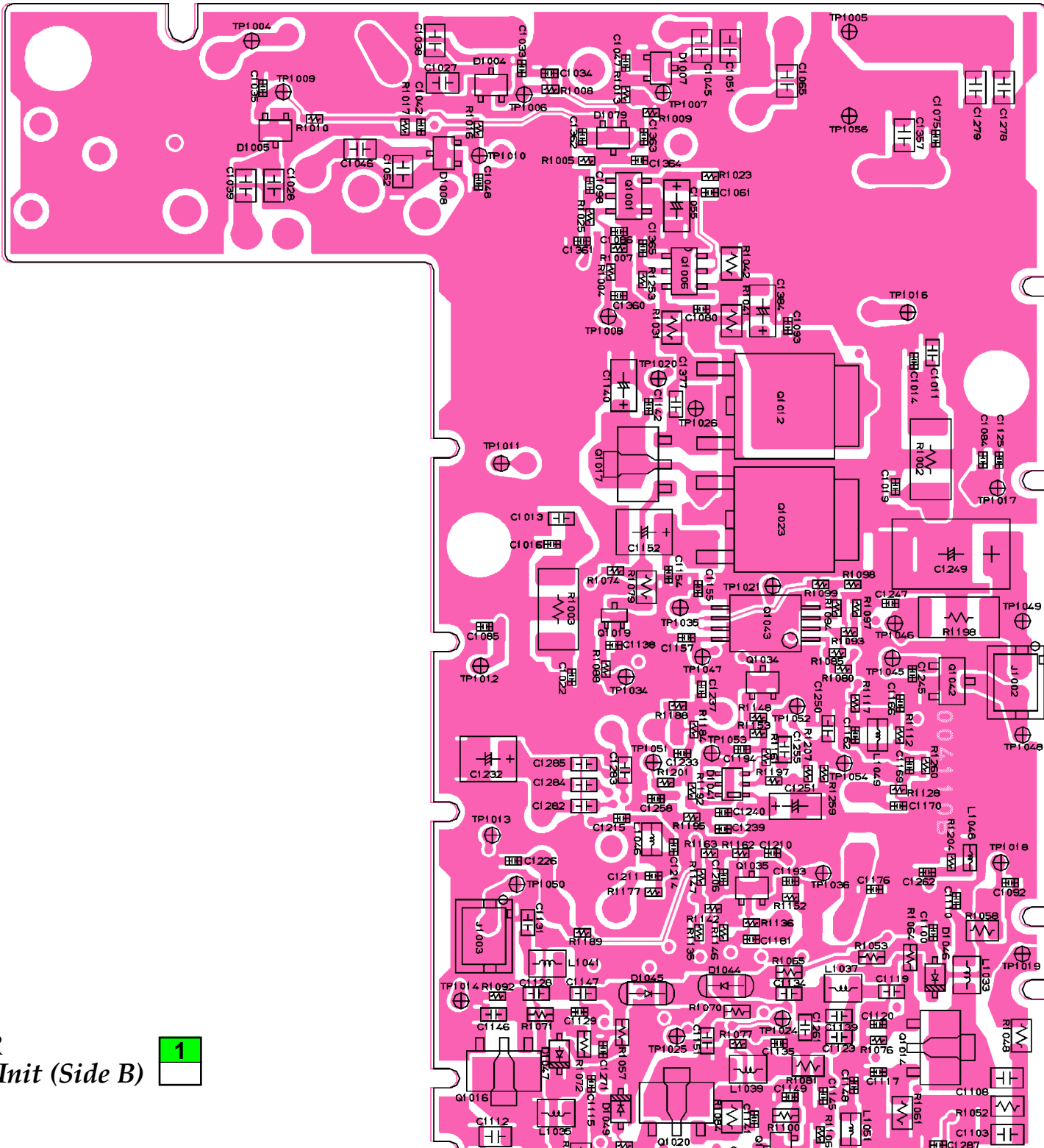


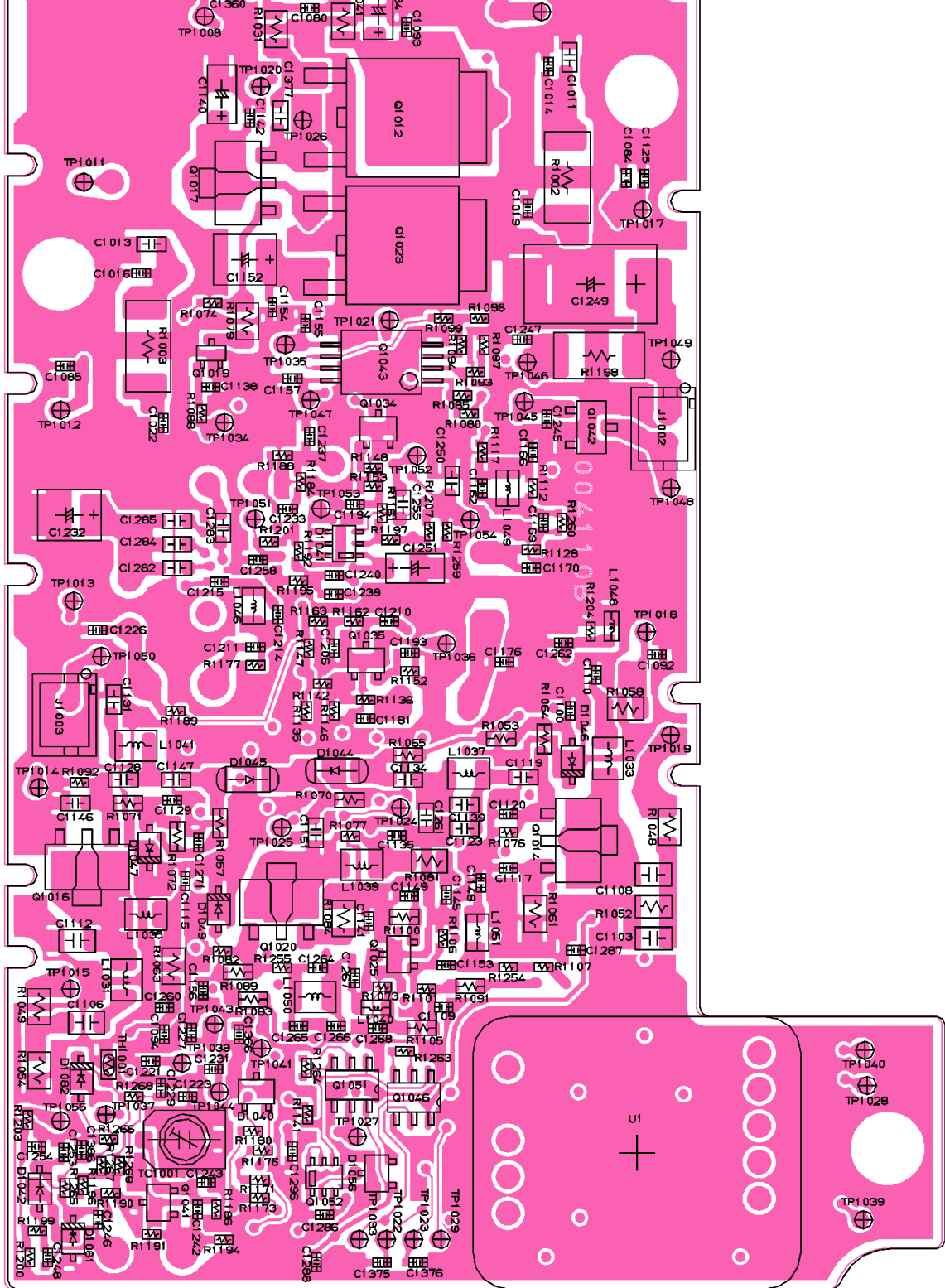


FT-90R
Main Unit (Side A)

FT-90R
Main Unit (Side B)

1

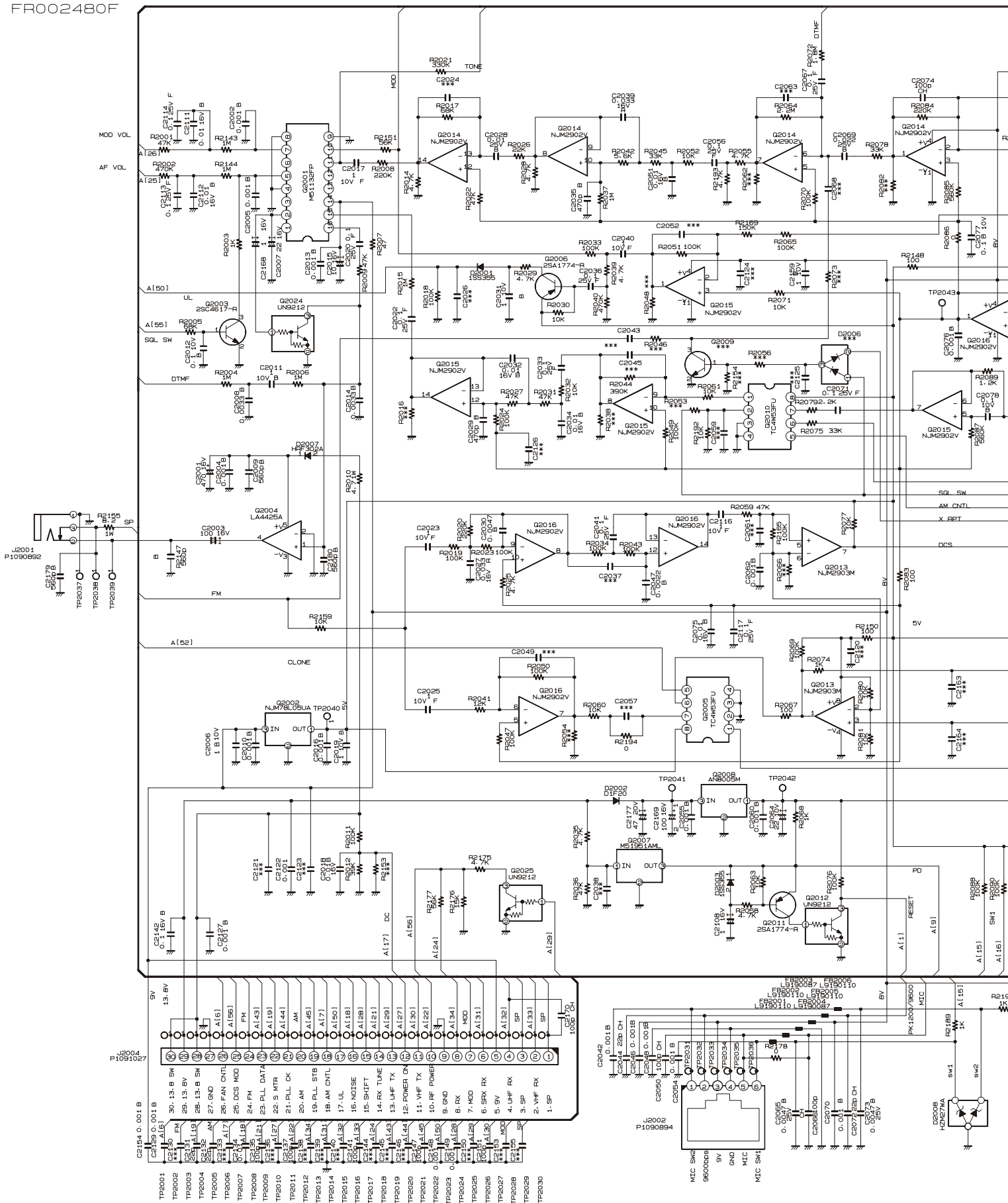


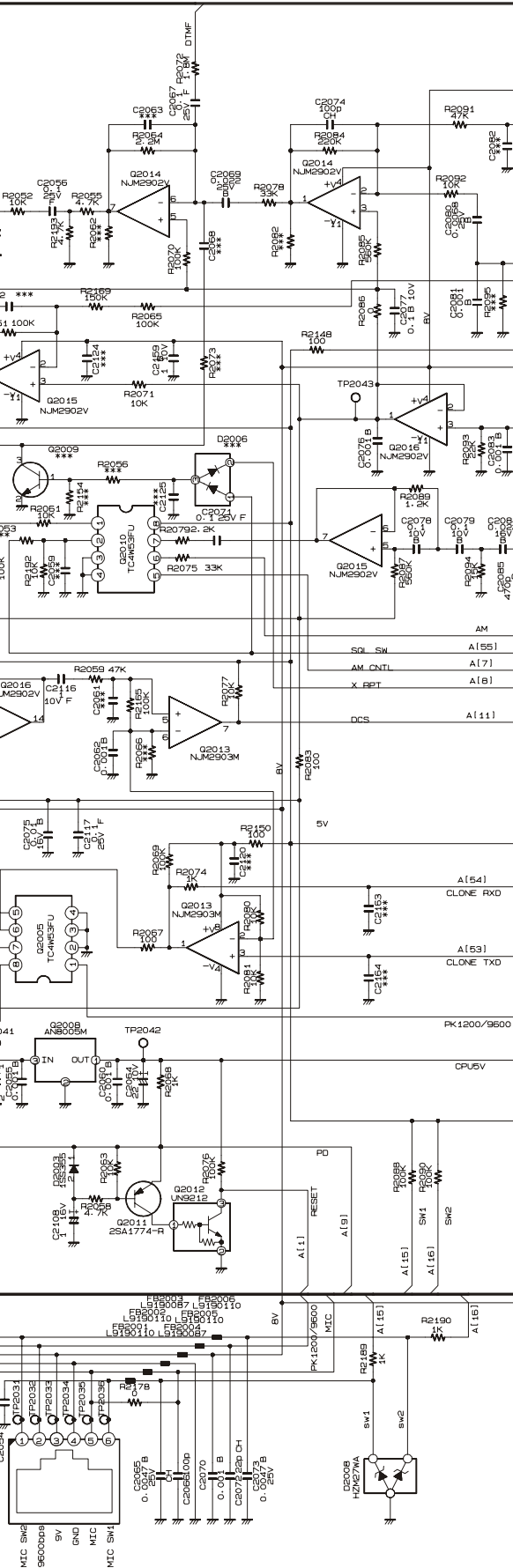


FT-90R
Main Unit (Side B)



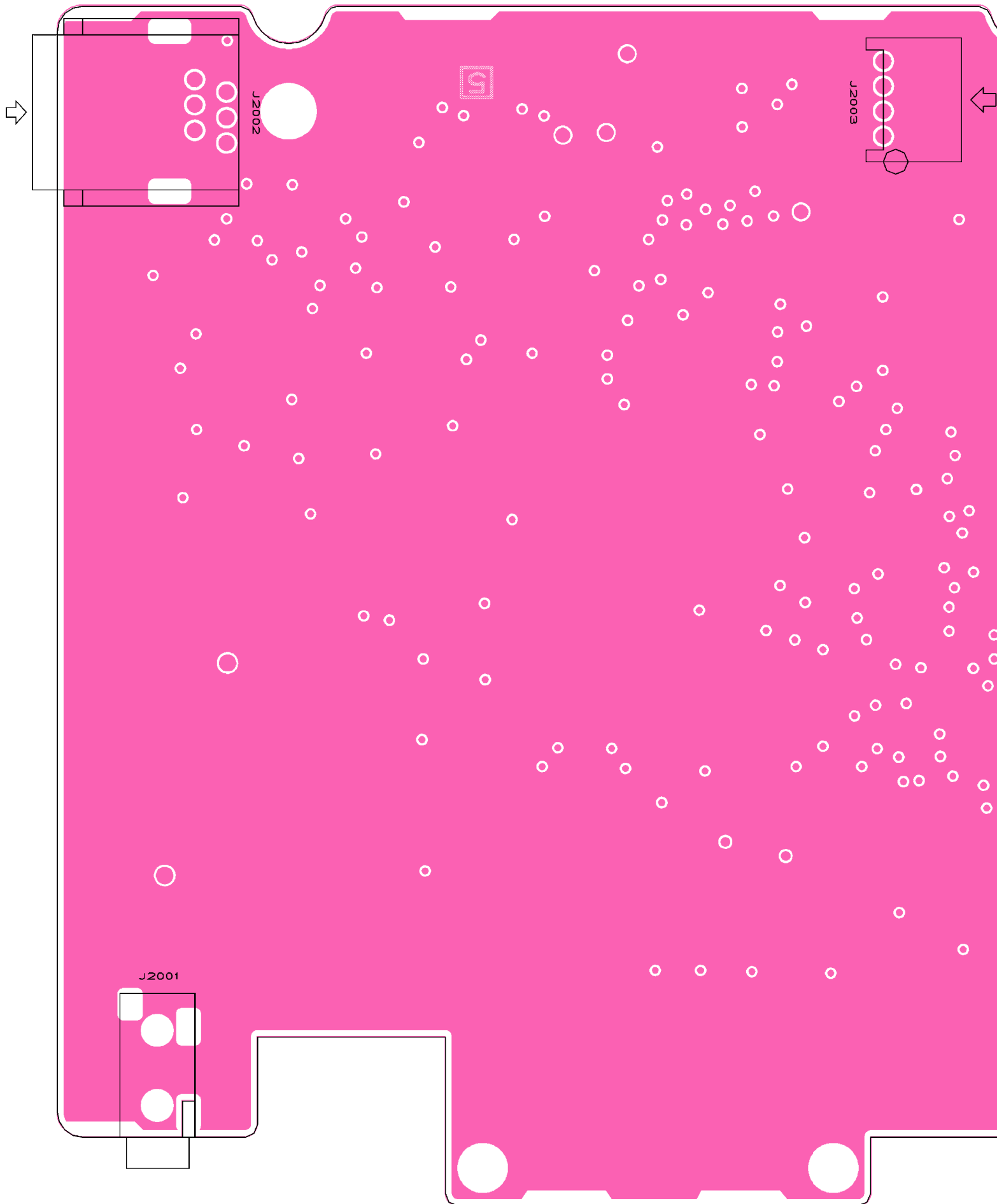
CNTL-UNIT
FR002480F

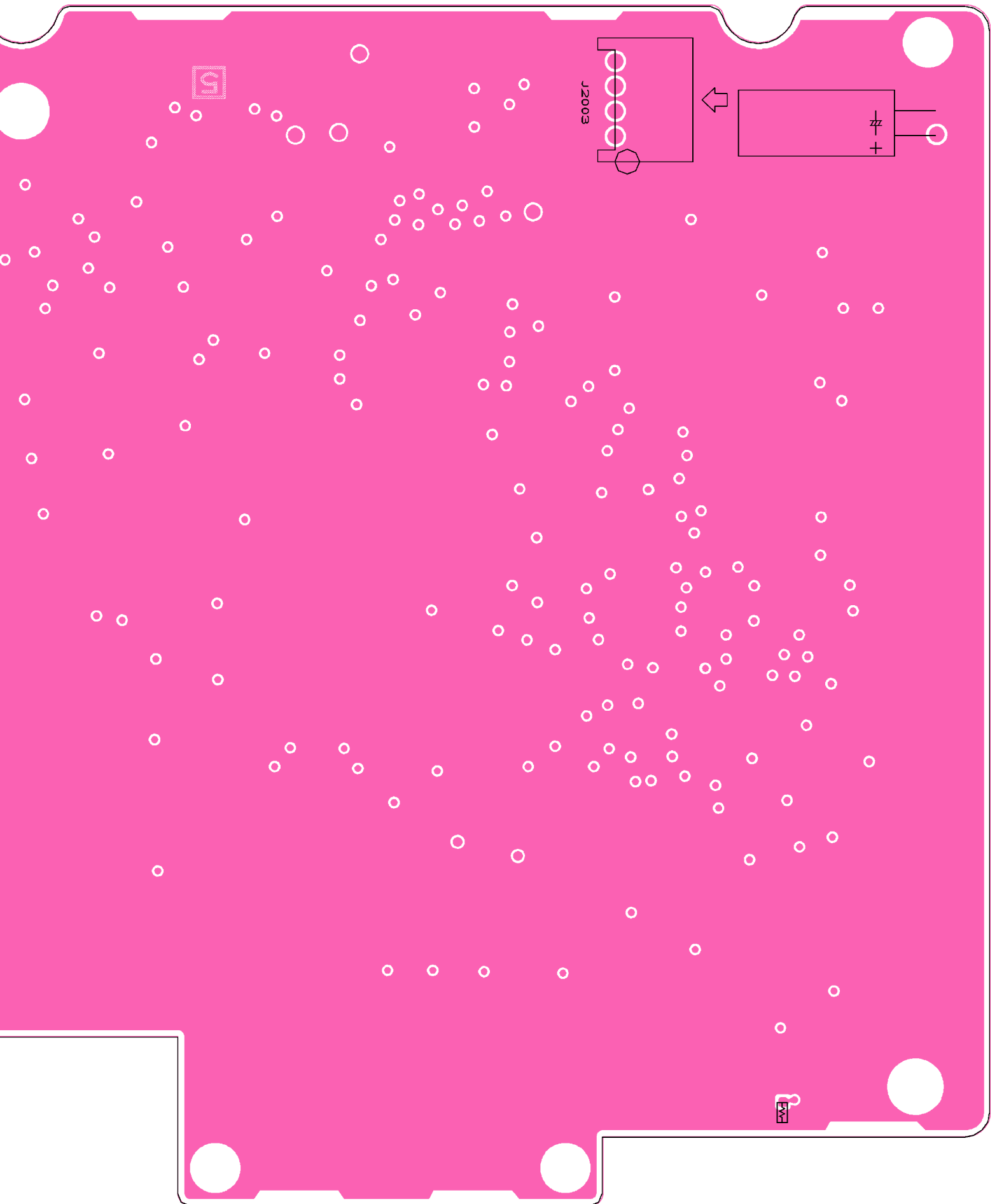




FT-90R CNTL Unit (Side A)

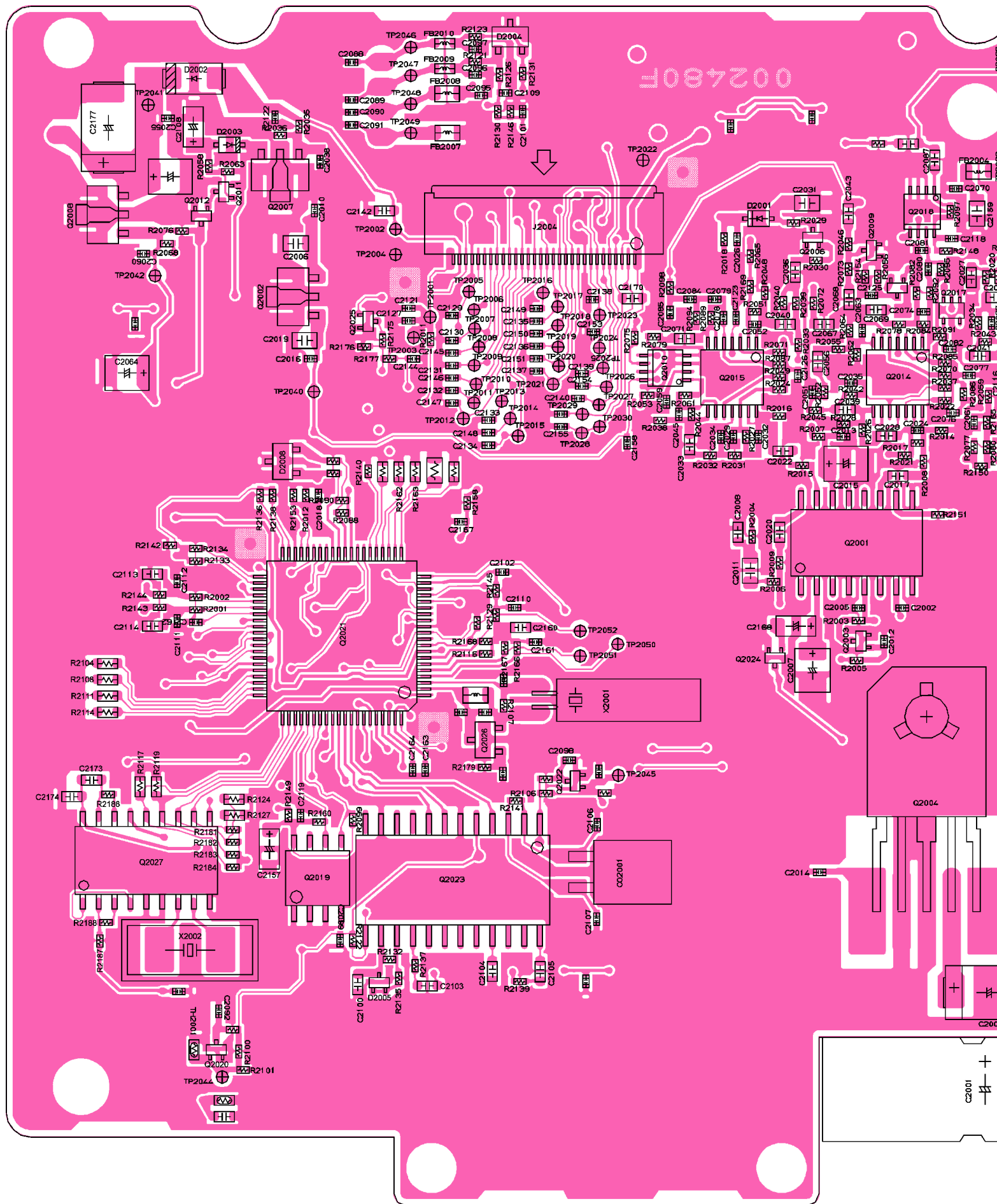
1

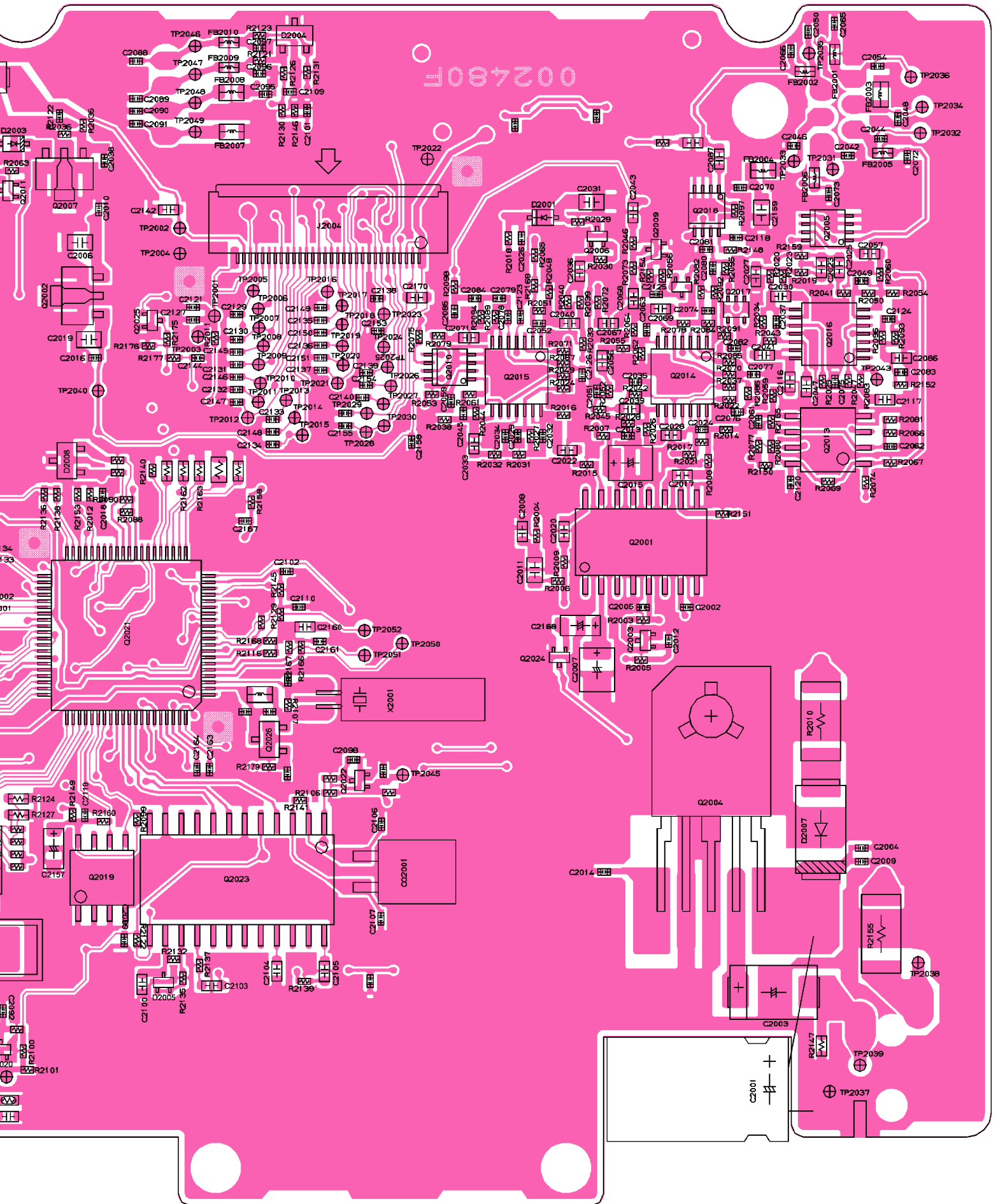




FT-90R CNTL Unit (Side B)

1





PANEL-UNIT
FR002490C

