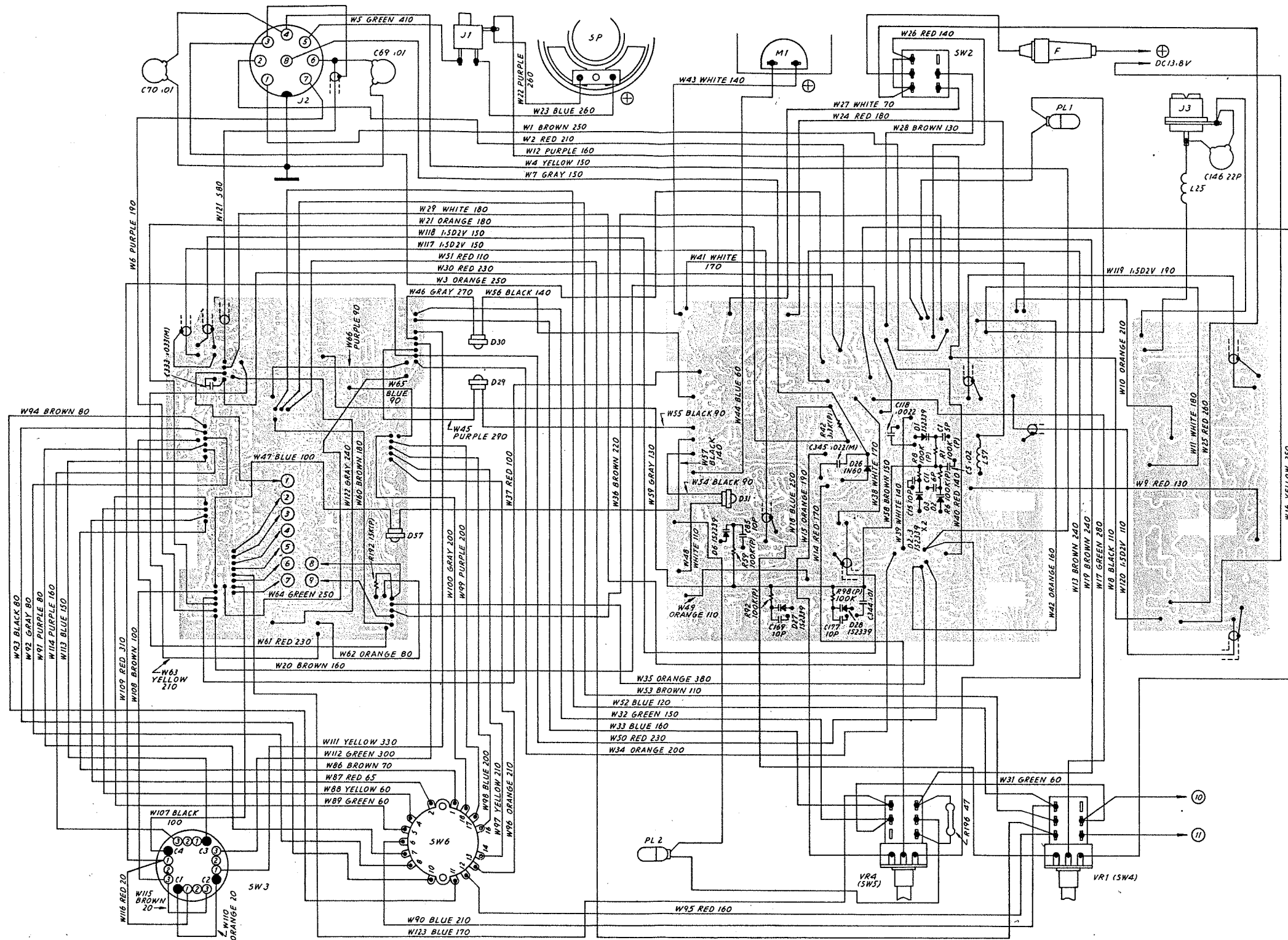


### INTERCONNECTION WIRING DIAGRAM



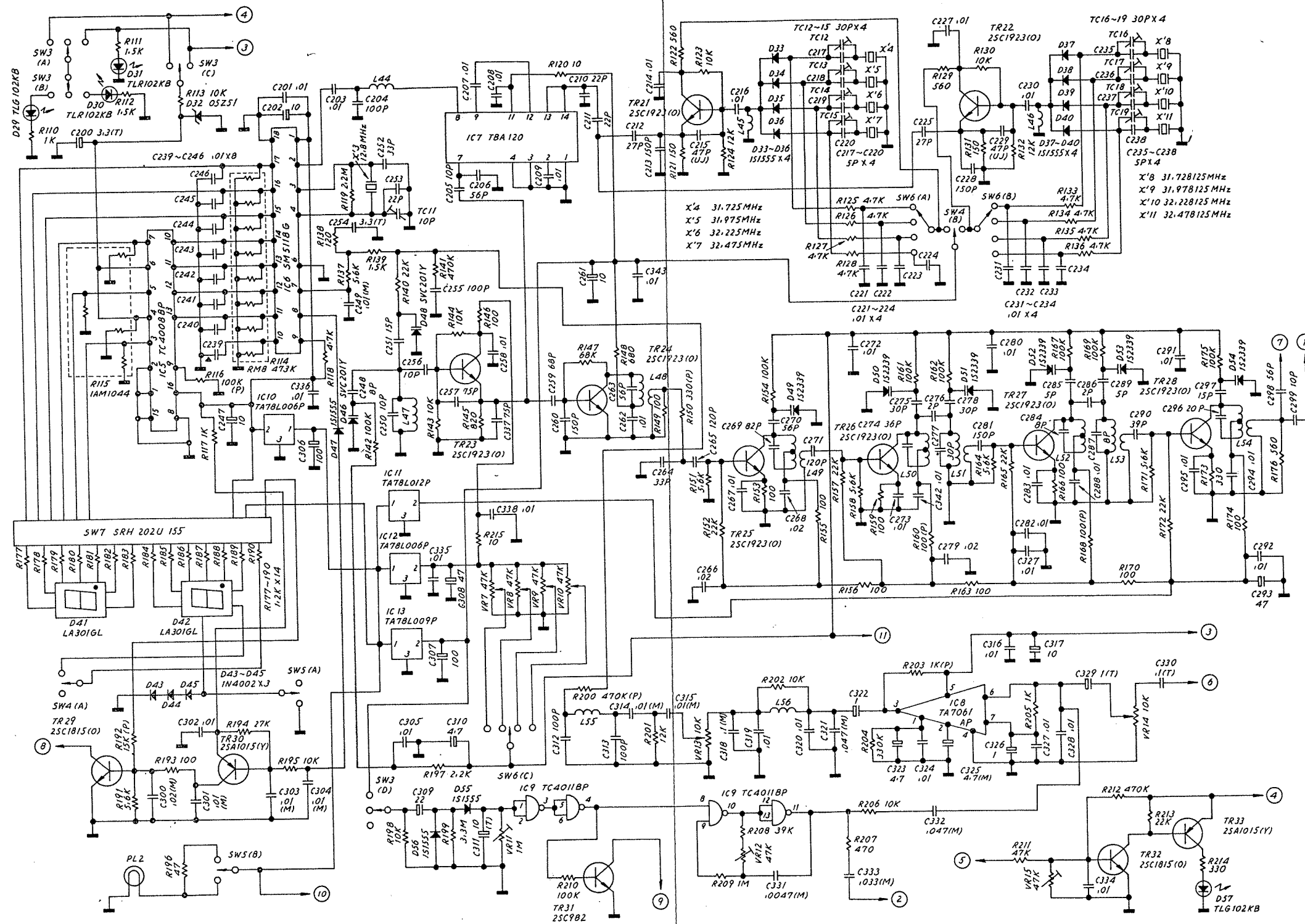
HD-ELEKTRONIK

**HORST DELFS**  
Fernsehtechnikermelster

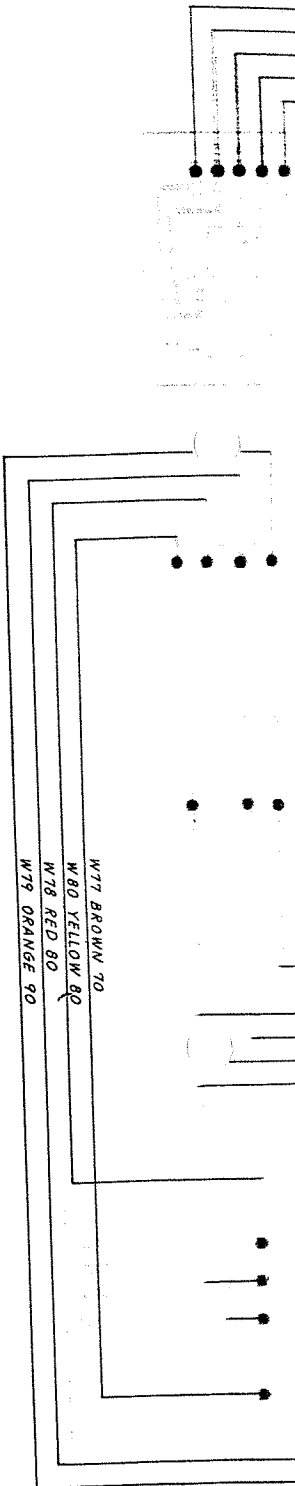
— 18. **Radio-Fernsehen-Phono-Funktechnik**  
**Roter Buck 1, Telefon 07951/21910**  
**7180 CRAILSHEIM**

7180 CRAILSHEIM

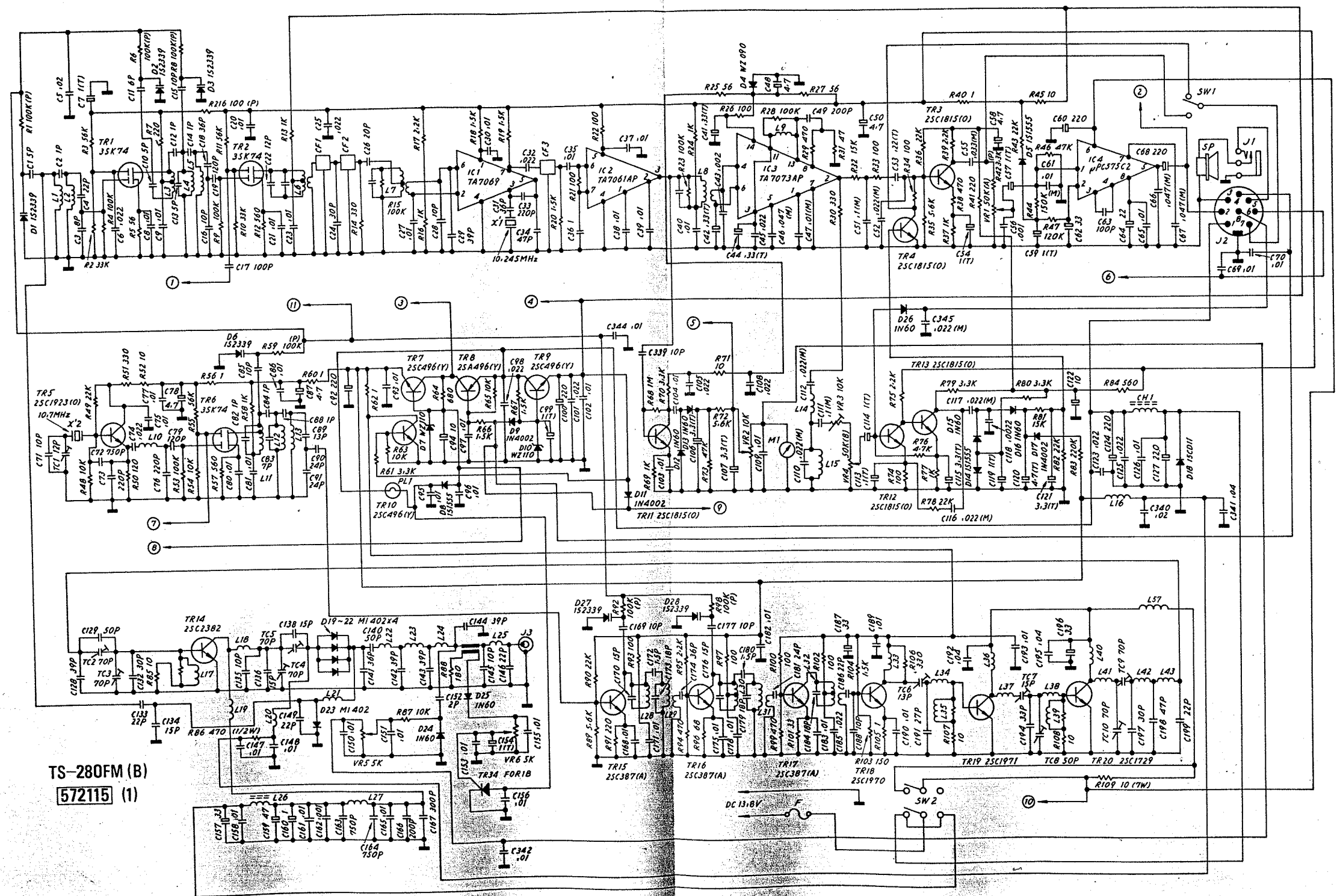
CIRCUIT DIAGRAM



## LED DISPLAY WIRING DIAGRAM



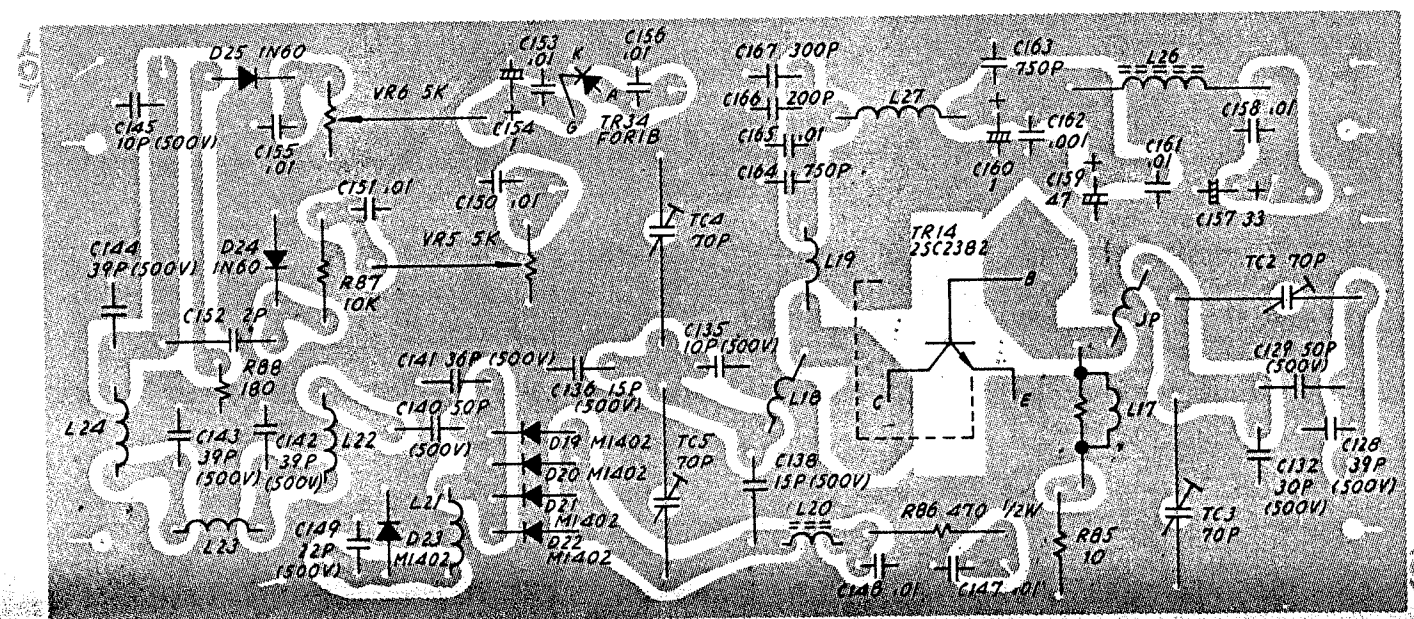
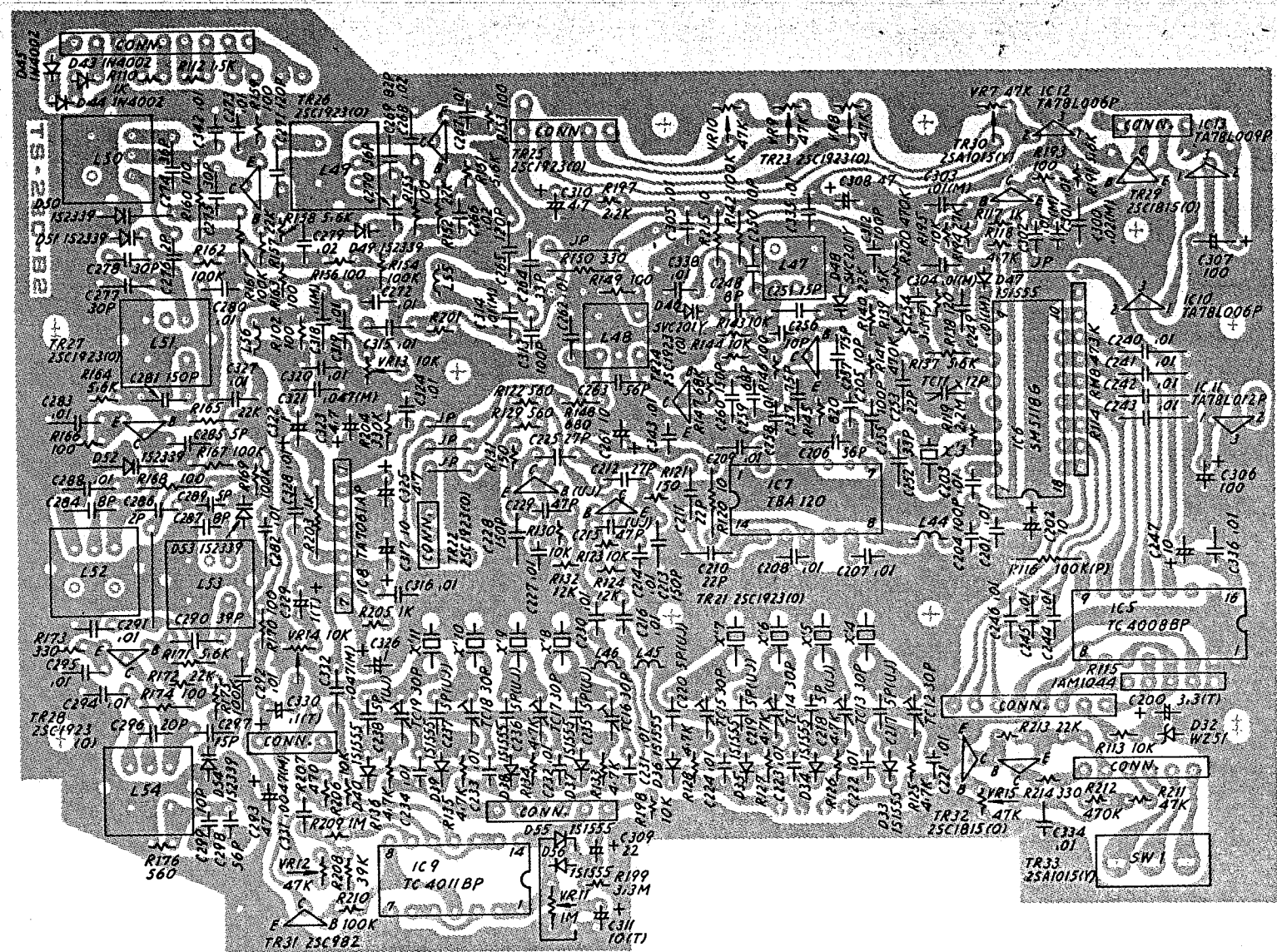
# CIRCUIT DIAGRAM



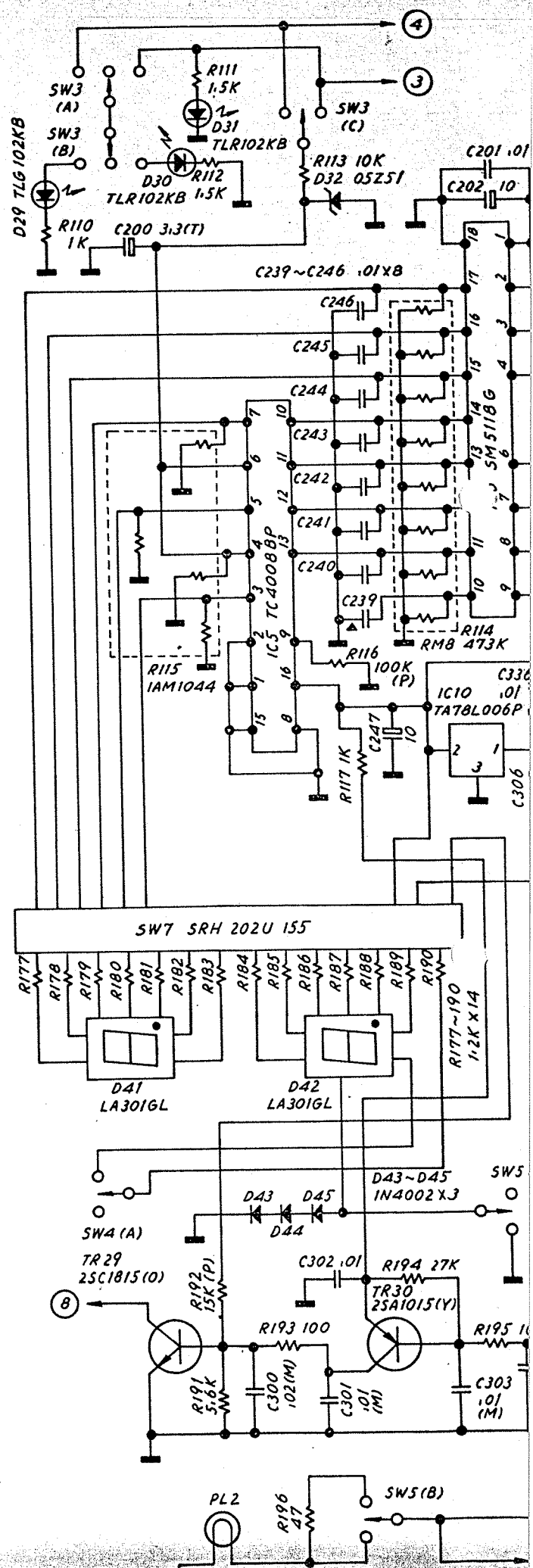
TS-280FM (B)  
572115 (1)



# PLL AND BOOSTER PRINTED BOARD PARTS LAYOUT



# CIRCUIT DIAGRAM

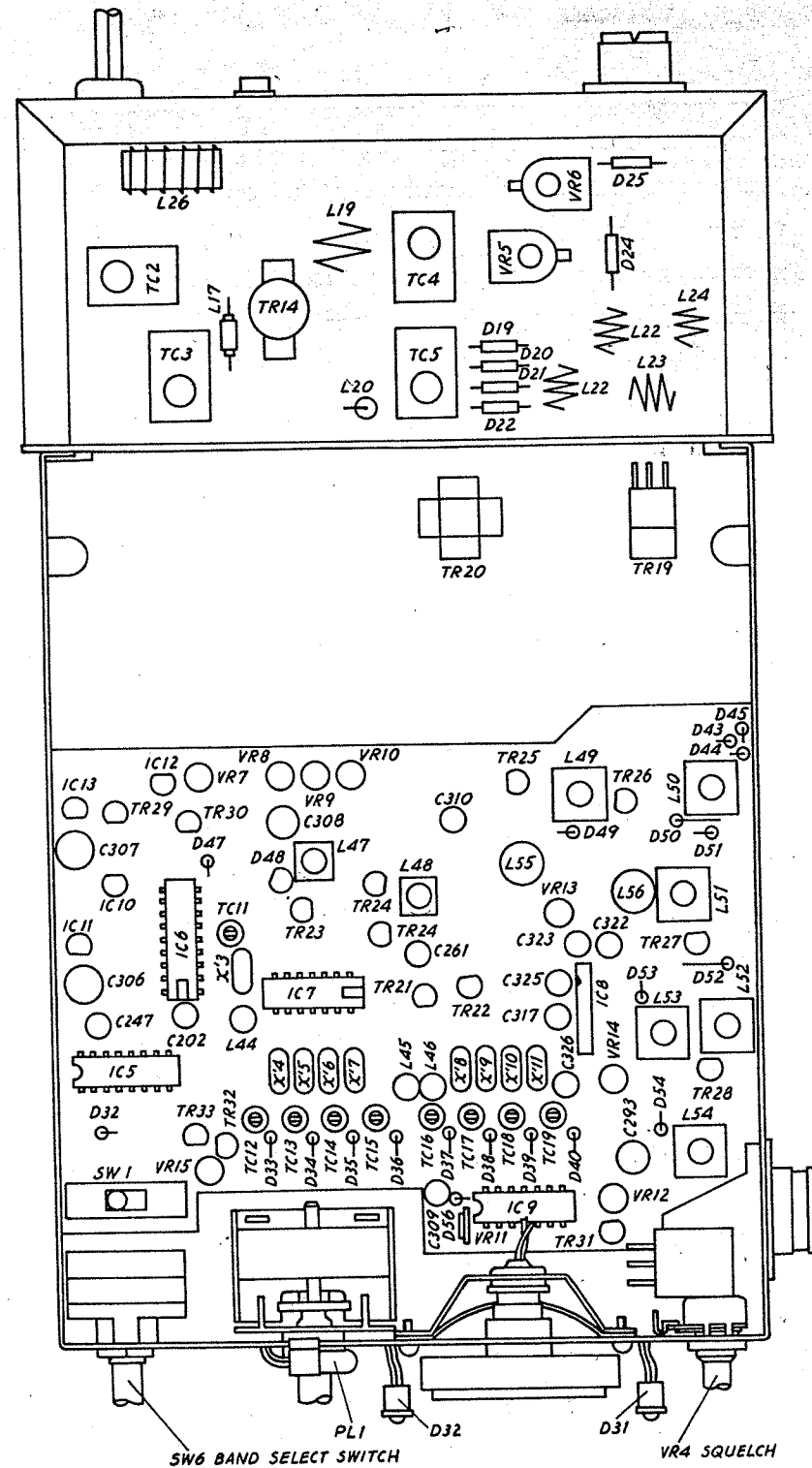


HD-ELEKTRONIK  
HORST DELFS  
Fernsehteknikermelster  
Radio-Fernsehen, Phono-Funktechnik  
Roter Buck 1, Telefon 07951/21910  
7180 CRAILSHEIM



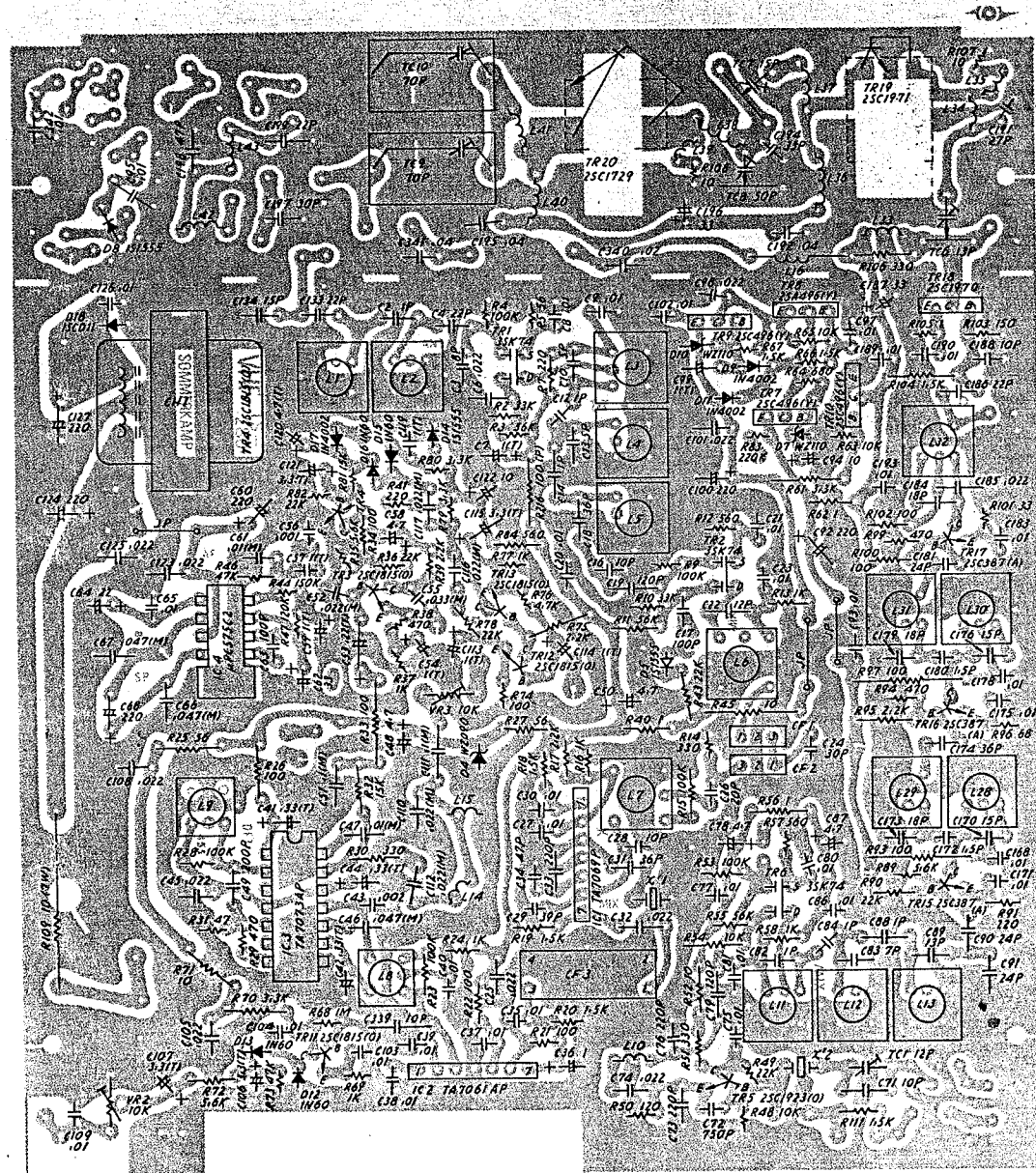


# COMPLETE PARTS LAYOUT



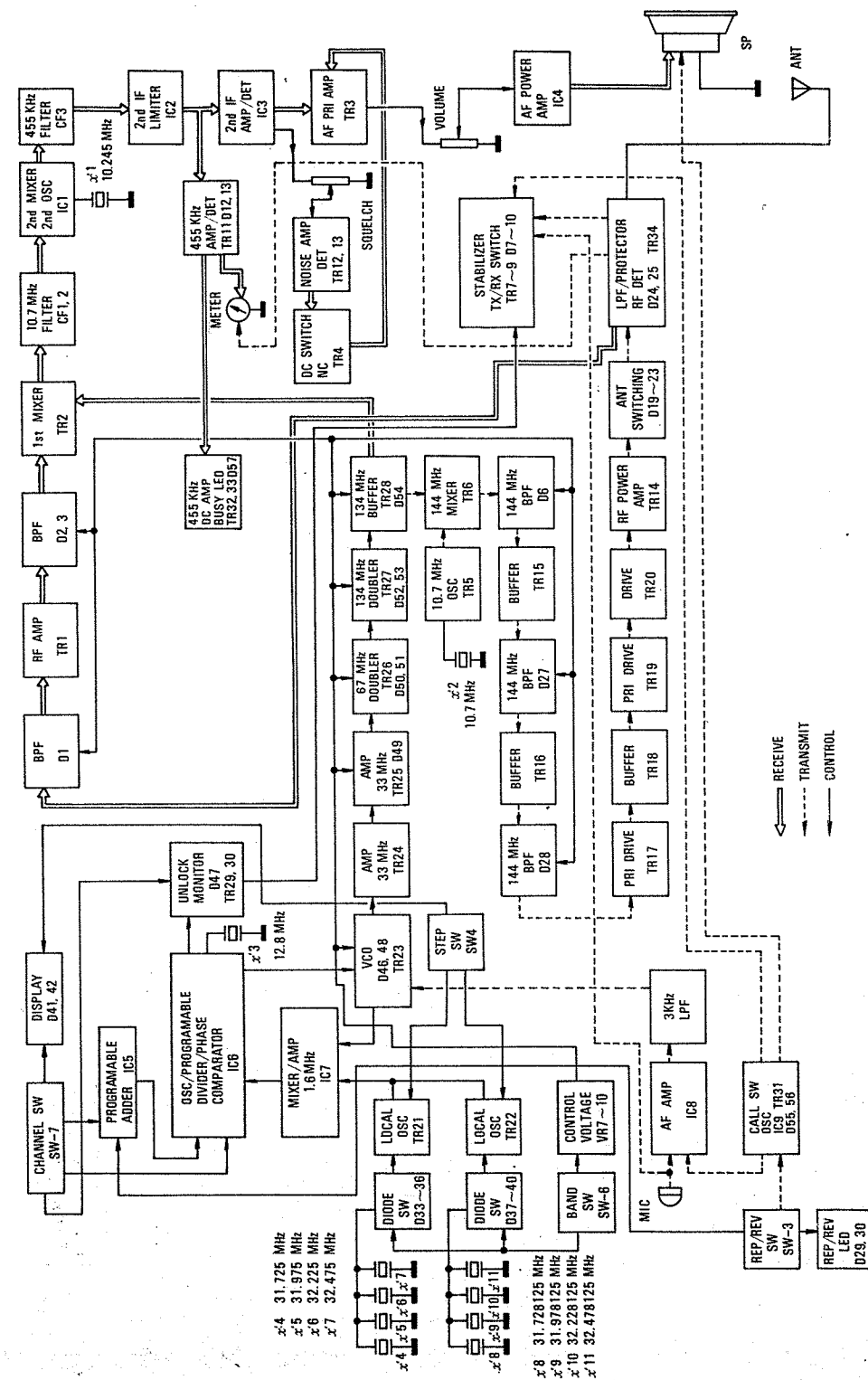
HD-ELEKTRONIK  
HOFST DELFS  
Fernseh- und Funktechnik  
Radio-Buck 1, Telefon 07951/21910  
7180 CRAILSHEIM

## PRINTED CIRCUIT BOARD PARTS LAYOUT (main)





**HDELEKTRONIK**  
**HOERST DELFS**  
Fernsehtechnikermelster  
Radio-Fernsehen-Phone-Funktechnik  
Roder Buck 1, Telefon 0795121910  
**7180 CRAILSHEIM**



The diagram illustrates the internal layout of a radio receiver chassis. Key components and their locations are as follows:

- Top Panel:** J3 ANT JACK, J1 EXT SP JACK.
- Left Panel:** J2 MIC JACK, VR1 VOLUME, PL2, M1 METER.
- Right Panel:** SW2, SW3, SW7 CHANNEL SWITCH.
- Internal Components:**
  - Transistors (TR):** TR1, TR2, TR3, TR4, TR5, TR6, TR7, TR8, TR9, TR10, TR11, TR12, TR13, TR14, TR15, TR16, TR17, TR18.
  - Capacitors (C):** C1, C2, C3, C4, C5, C6, C7, C8, C9, C10, C11, C12, C13, C14, C15, C16, C17, C18, C19, C20, C21, C22, C23, C24, C25, C26, C27, C28, C29, C30, C31, C32, C33, C34, C35, C36, C37, C38, C39, C40, C41, C42, C43, C44, C45, C46, C47, C48, C49, C50, C51, C52, C53, C54, C55, C56, C57, C58, C59, C60, C61, C62, C63, C64, C65, C66, C67, C68, C69, C70, C71, C72, C73, C74, C75, C76, C77, C78, C79, C80, C81, C82, C83, C84, C85, C86, C87, C88, C89, C90, C91, C92, C93, C94, C95, C96, C97, C98, C99, C100.
  - Inductors (L):** L1, L2, L3, L4, L5, L6, L7, L8, L9, L10, L11, L12, L13, L14, L15, L16, L17, L18, L19, L20, L21, L22, L23, L24, L25, L26, L27, L28, L29, L30, L31, L32, L33, L34, L35.
  - Resistors (R):** R109.
  - Integrated Circuits (IC):** IC1, IC2, IC3, IC4.
  - Other Components:** VR2, VR3, D1, D2, D3, D4, D5, D6, D7, D8, D9, D10, D11, D12, D13, D14, D15, D16, D17, D18, D19, D20, D21, D22, D23, D24, D25, D26, D27, D28, D29, D30, D31, D32, D33, D34, D35, D36, D37, D38, D39, D40, D41, D42, D43, D44, D45, D46, D47, D48, D49, D50, D51, D52, D53, D54, D55, D56, D57, D58, D59, D60, D61, D62, D63, D64, D65, D66, D67, D68, D69, D70, D71, D72, D73, D74, D75, D76, D77, D78, D79, D80, D81, D82, D83, D84, D85, D86, D87, D88, D89, D90, D91, D92, D93, D94, D95, D96, D97, D98, D99, D100.