

ALLEN & HEATH



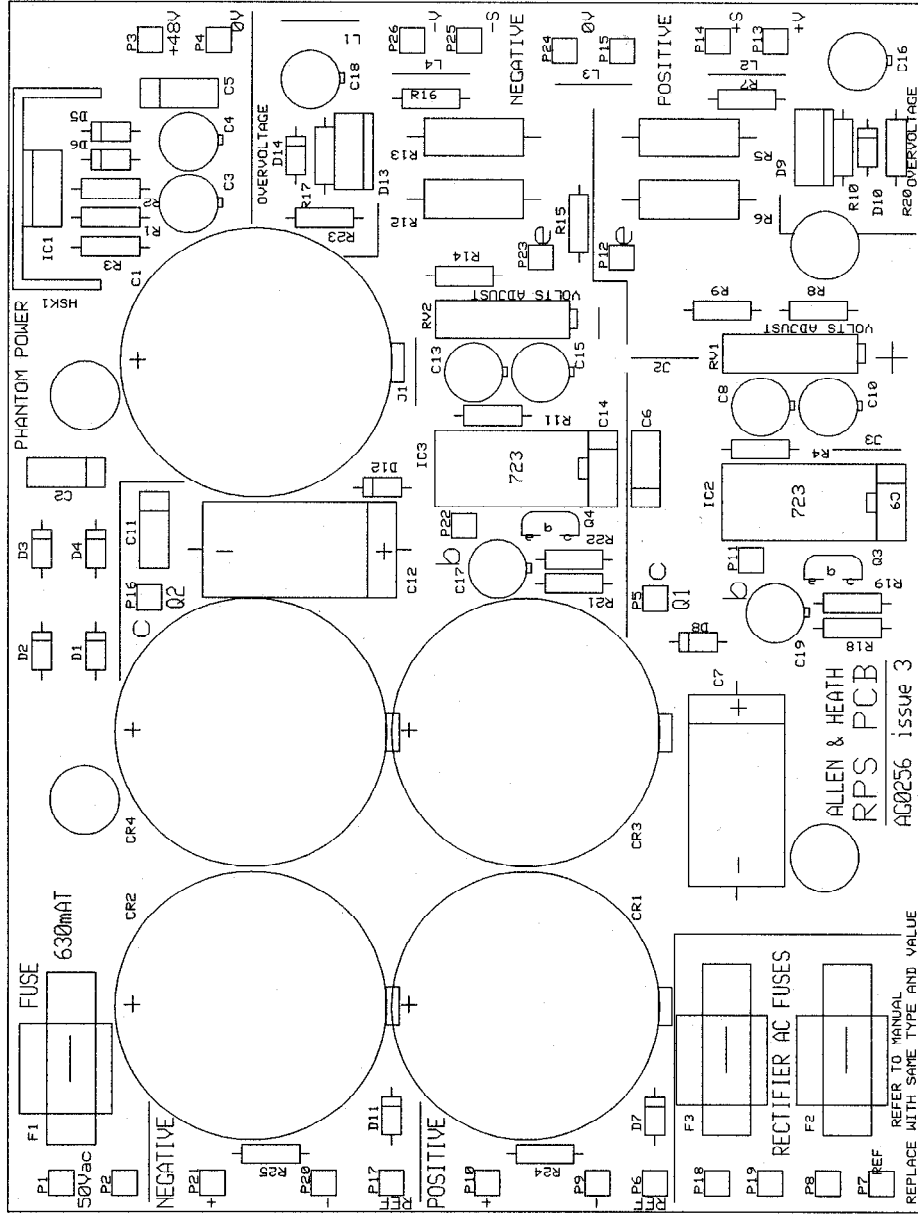
WARNING – HIGH VOLTAGES

Power Supply Unit (PSU) work should only be carried out by qualified personnel.

We recommend that you use an approved Allen & Heath service centre for all power supply work.

Please contact your local Allen & Heath distributor for more details.

<http://www.allen-heath.com/>



FW021D

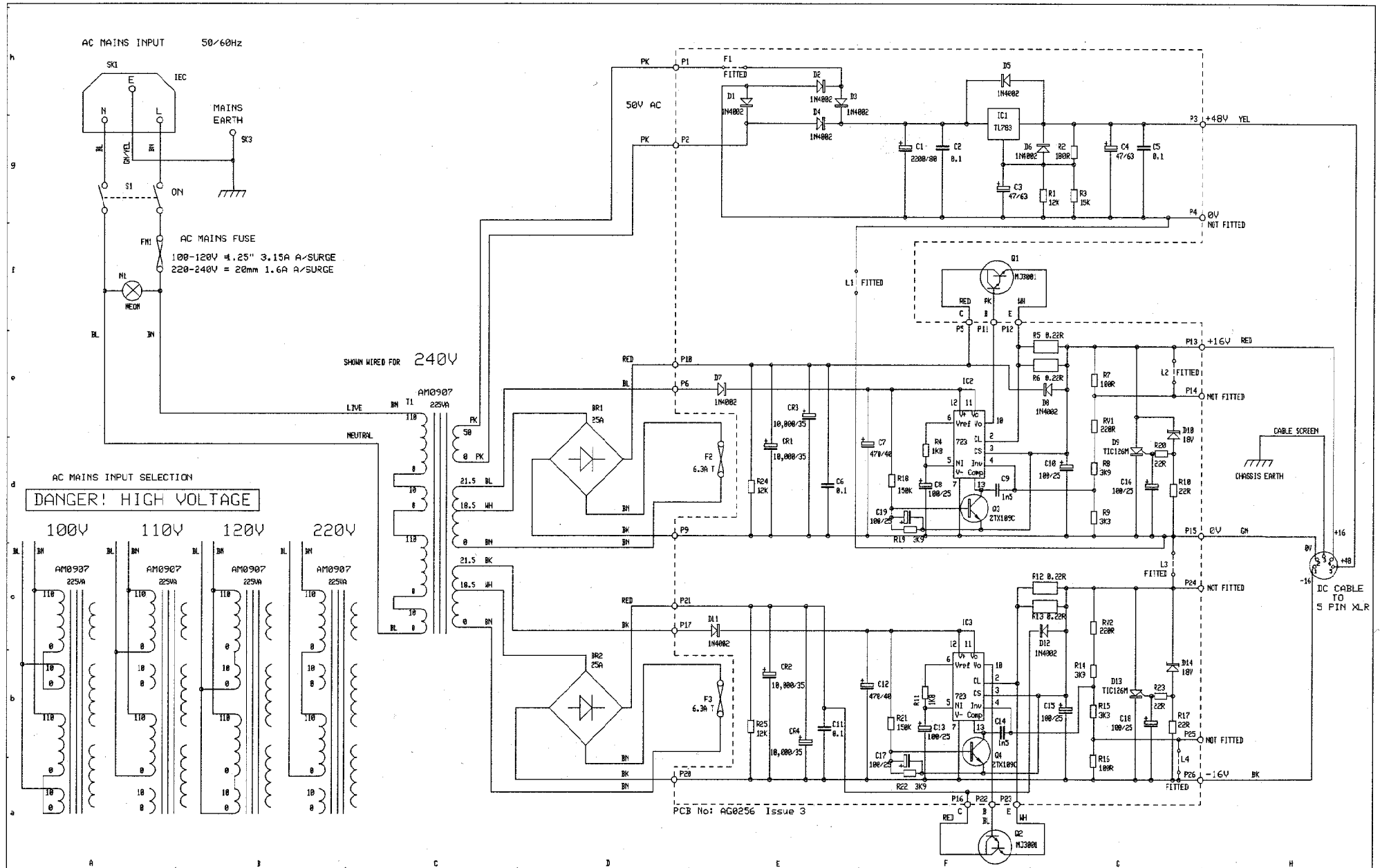
COMPONENT PRINT

BY CD 6-3-91

A&H 0326 72070

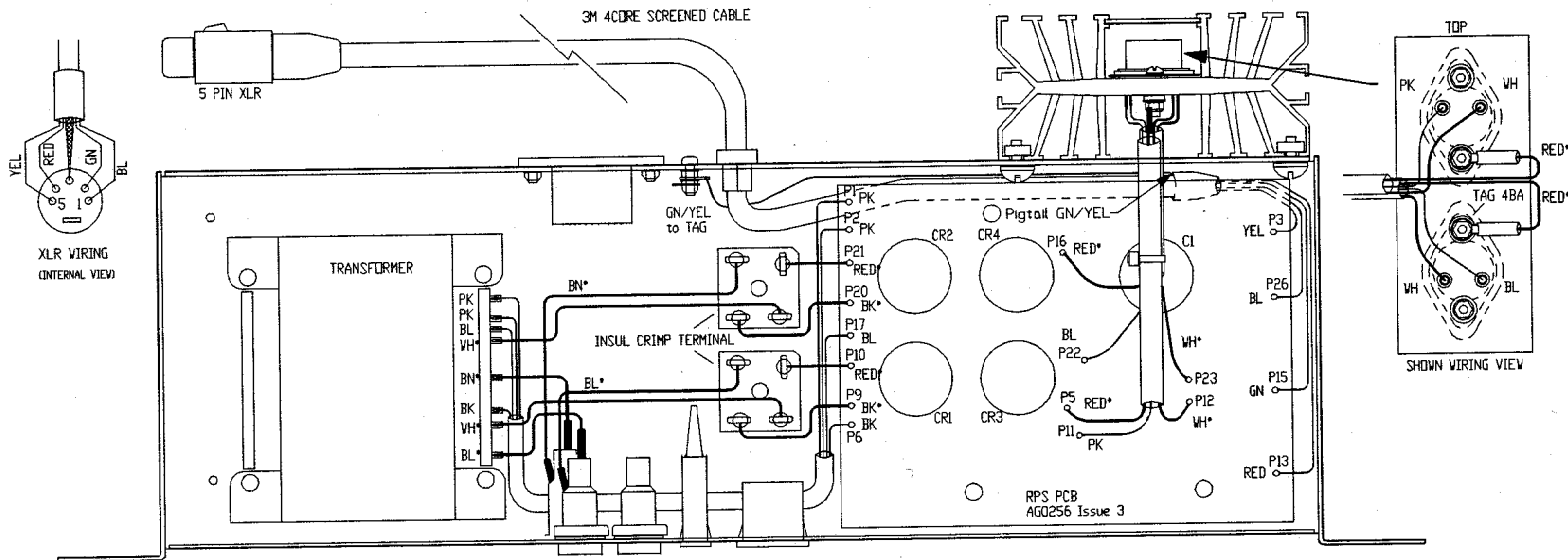
ALLEN & HEATH
RPS PCB
AG0256 issue 3

REFER TO MANUAL
REPLACE WITH SAME TYPE AND VALUE



ISS.	REVISION	BY DATE	NOTES	UNIT TITLE	MANUFACTURED IN ENGLAND BY
1	PRODUCTION	ARJ 7-12-94	1. RESISTORS MARKED R ARE 1% ALL OTHERS ARE 5% 1/4W UNLESS OTHERWISE MARKED 2. ELECTROLYTIC CAPACITORS ARE µF/VOLTS	RPS10 POWER SUPPLY DRAWING TITLE CIRCUIT DIAGRAM	ALLEN & HEATH DRAWING No. C002-045 ISSUE 1

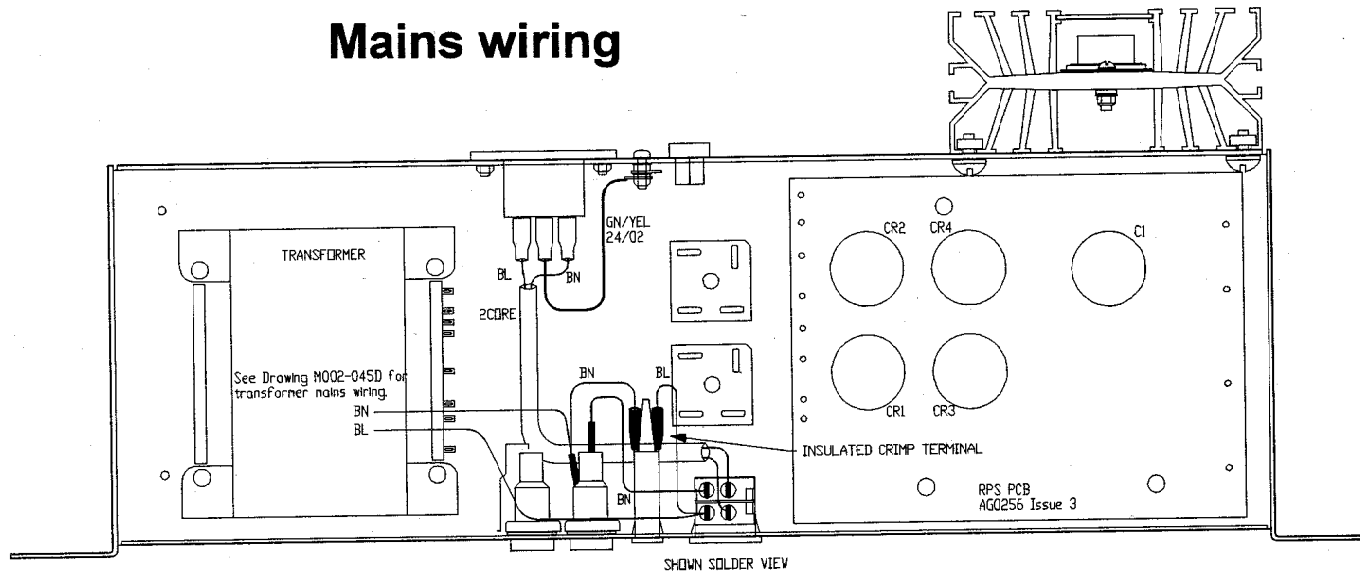
DC wiring



ALL WIRES ARE 16/02 UNLESS MARKED WITH * (eg. BL*).

WIRES MARKED WITH * (eg. BL*) ARE 30/0.25.

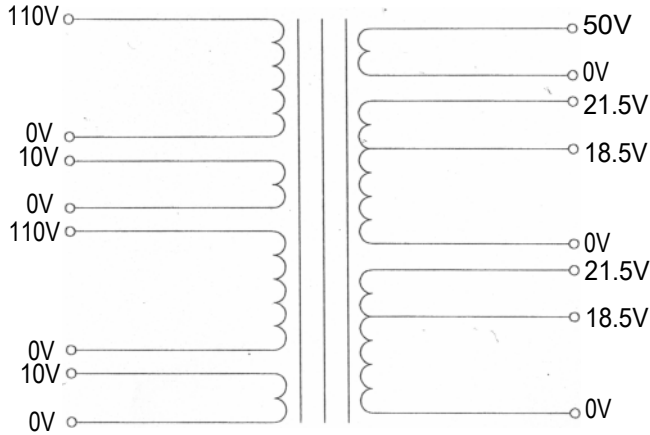
Mains wiring



ALL WIRES 16/02 UNLESS OTHERWISE MARKED

INTERNAL WIRING

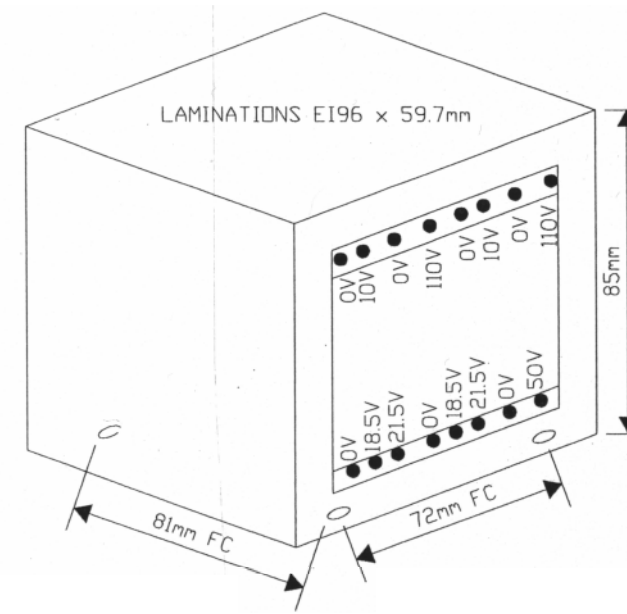
PRIMARY	SECONDARY (ON LOAD)	AC CURRENT (BRIDGE LOAD)	REGULATION
---------	------------------------	-----------------------------	------------



0.25A	10%
5A*	5%
5A*	5%

* APPLICATION REQUIRES EITHER 21.5V @ 5A OR 18.5V @ 5A

PRIMARIES CONNECTED IN SERIES OR PARALLEL FOR 100, 110, 120, 220 & 240V AC MAINS INPUTS
 THE 10V PRIMARIES MAY BE REVERSE CONNECTED TO ACHIEVE 100V AC MAINS INPUTS.



FIXING HOLE DIA. 5mm
 ● SOLDER TAG CONNECTIONS

APPROVALS
 TRANSFORMER MUST CONFORM TO ALL RELEVANT EUROPEAN (EN), U S (UL) AND CANADIAN (CSA) SAFETY STANDARDS.

ISSUE	REVISION	BY	DATE	NOTES	DRAWING TITLE		ALLEN & HEATH LTD. KERNICK INDUSTRIAL ESTATE. PENRYN, CORNWALL TR10 9LU. TEL. 0326 372070 FAX. 0326 377097
1	REDRAWN FROM A153 Iss. 3	39	17/11/94	1. WINDINGS TO BE IMPREGNATED TO PREVENT MECHANICAL BUZZ/VIBRATION. 2. TRANSFORMER TO BE MARKED WITH VOLTAGES AND PART NUMBER.	225VA AC MAINS TRANSFORMER STOCK CODE AM0907		