

ALLEN&HEATH

Parts identification sheet

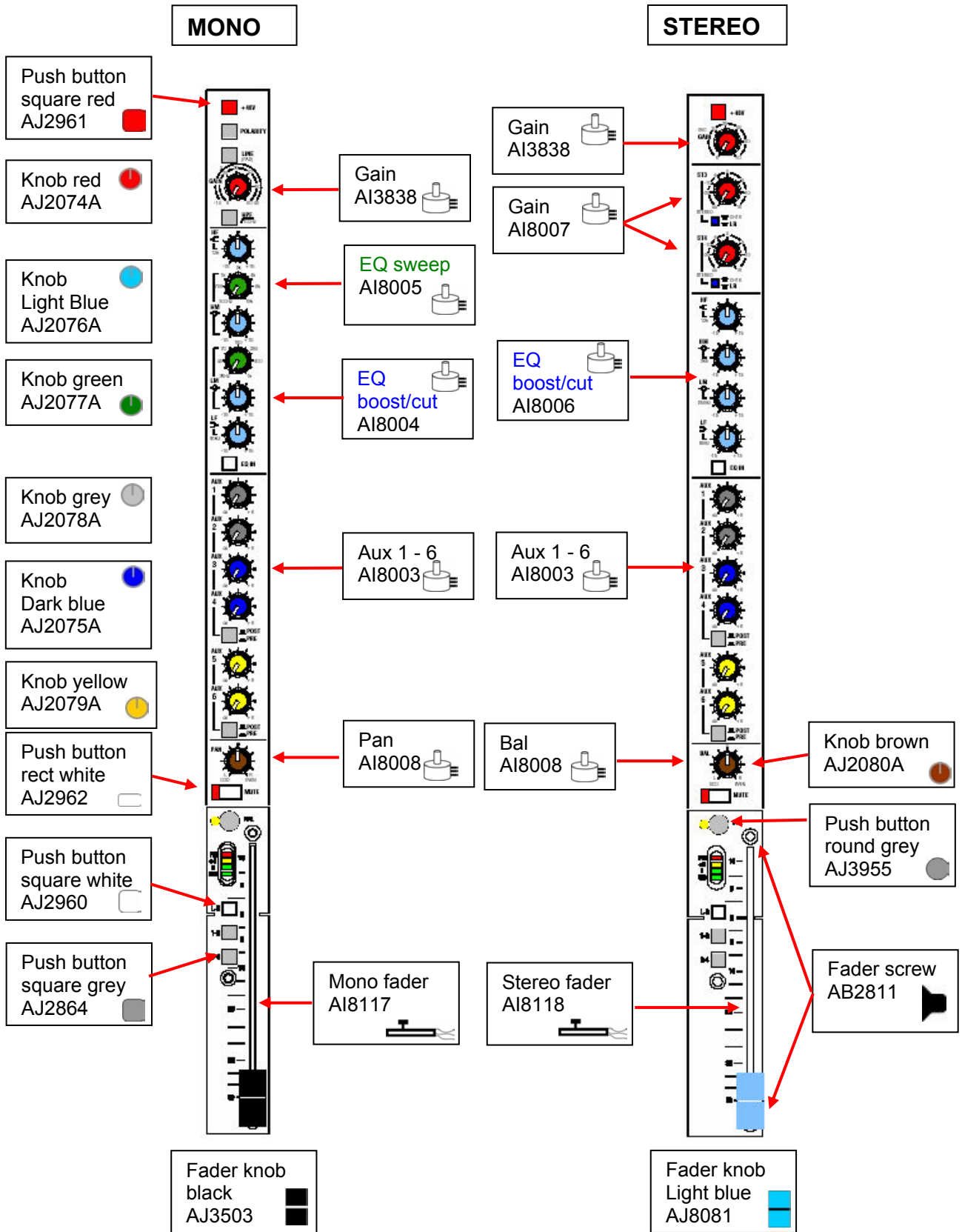
GL2400

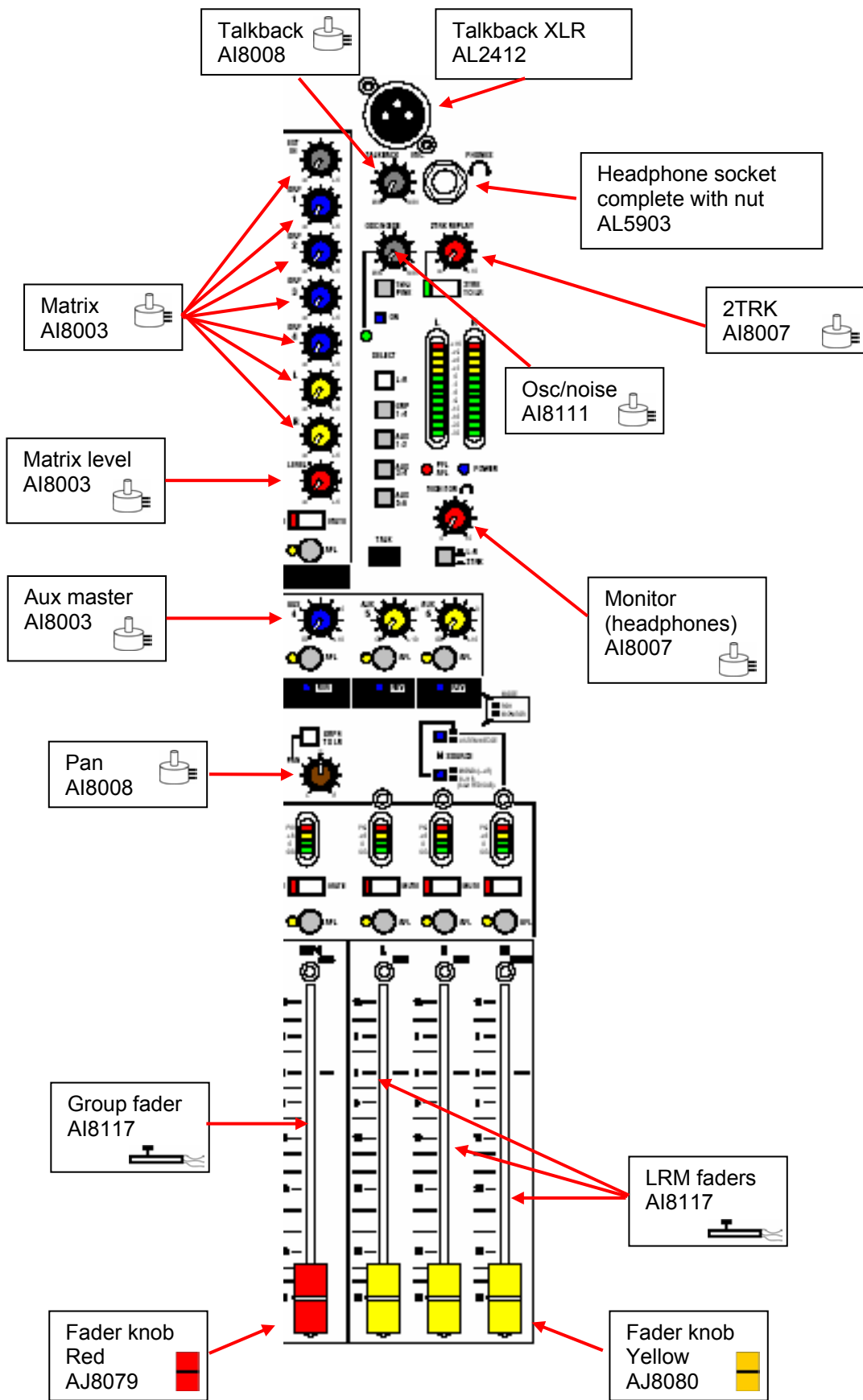
How to order parts

Parts must be ordered from our distributor in your territory. A list of international distributors can be viewed at <http://www.allen-heath.com/UK/distributors.asp>

UK parts must be ordered through an appointed A&H dealer or service centre. A list of UK service centres can be viewed at http://www.allen-heath.com/UK/service_centres.asp

EXTERIOR PARTS:



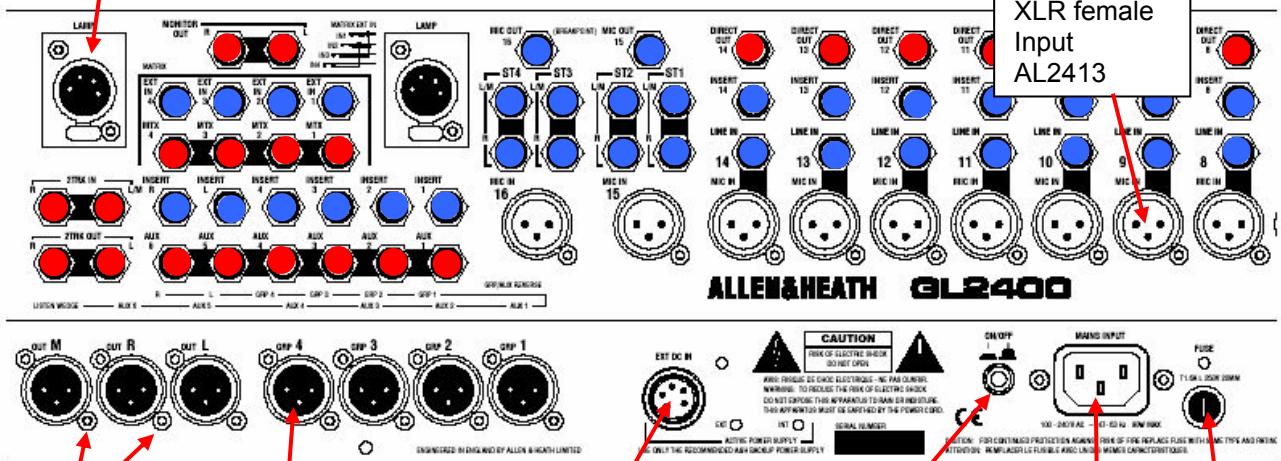


Jack sockets
Nuts supplied only with complete socket
 Direct Out
 2 trk
 Matrix
 Monitor
 Aux
 AL3407 ●

Jack sockets
Nuts supplied only with complete socket
 Insert
 Matrix EXT IN
 Line In
 Stereo Mic OUT
 Stereo Line IN
 AL3410 ●

Lamp socket
 AL8104

XLR female
 Input
 AL2413




XLR screw
 AB2810




XLR male
 Output
 AL2413

DC socket
 AL5686

Power switch
 AL2413



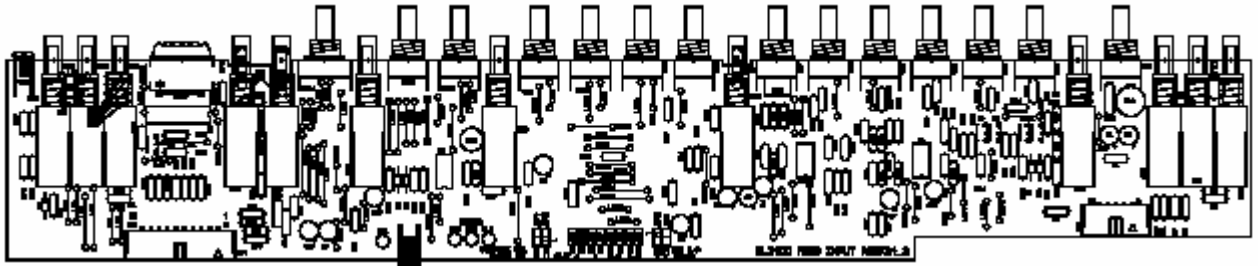
Button
 AJ2887



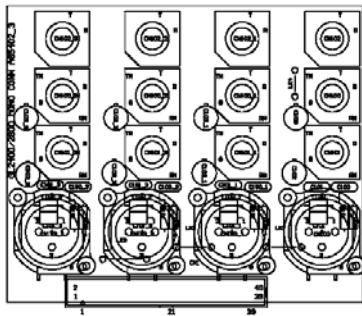
Fuse holder

AC mains
 socket AL3458

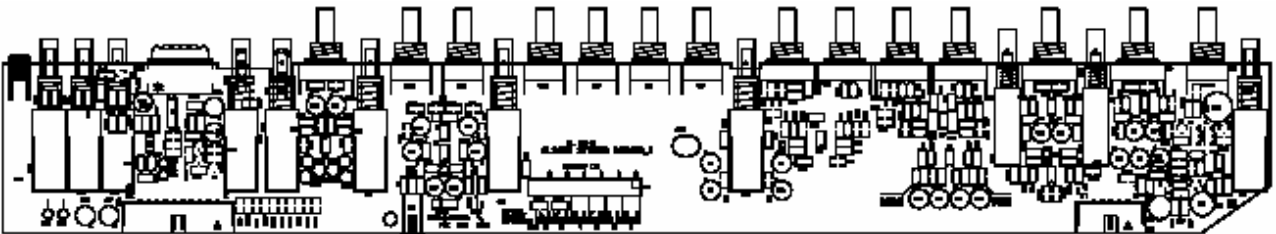
INTERIOR PARTS:



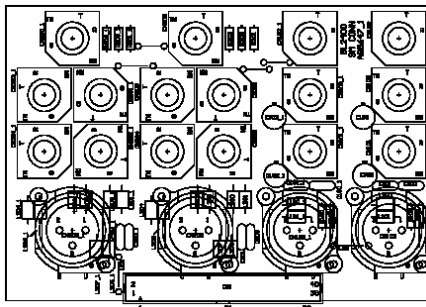
Mono I/P 003-221



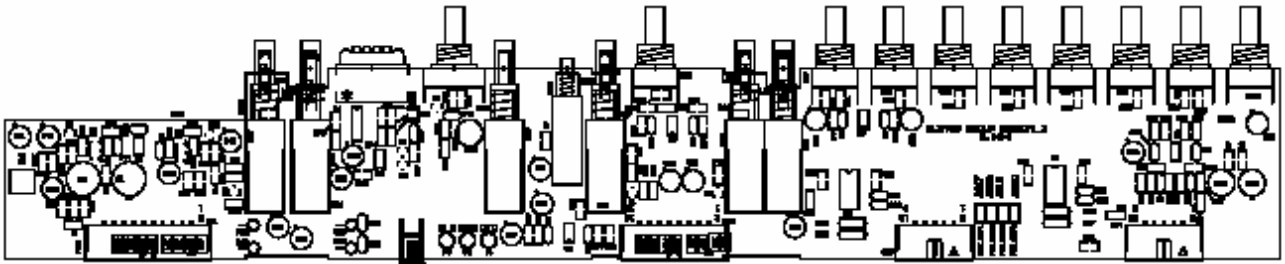
Mono connector 003-228



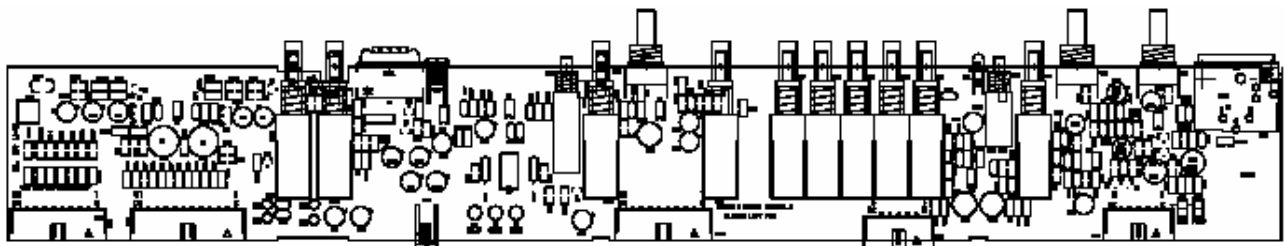
Stereo I/P 003-243



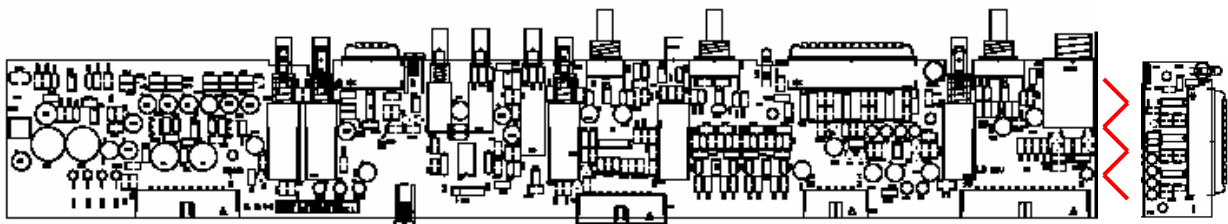
Stereo connector 003-245



Group PCB 003-267

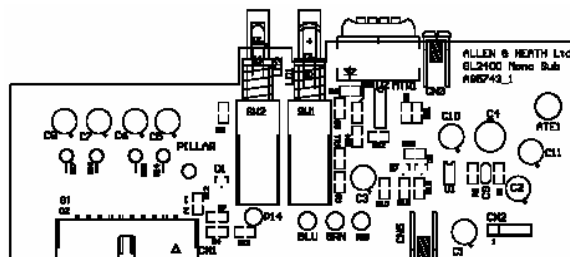


Master Left PCB 003-271

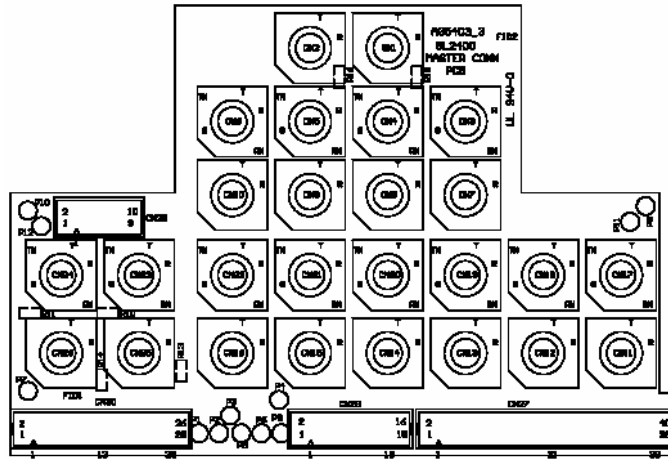


Master Right PCB 003-268

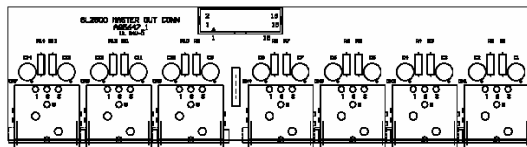
Includes meter PCB snap off.



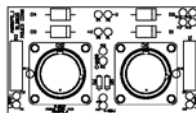
Mono O/P sub 003-225



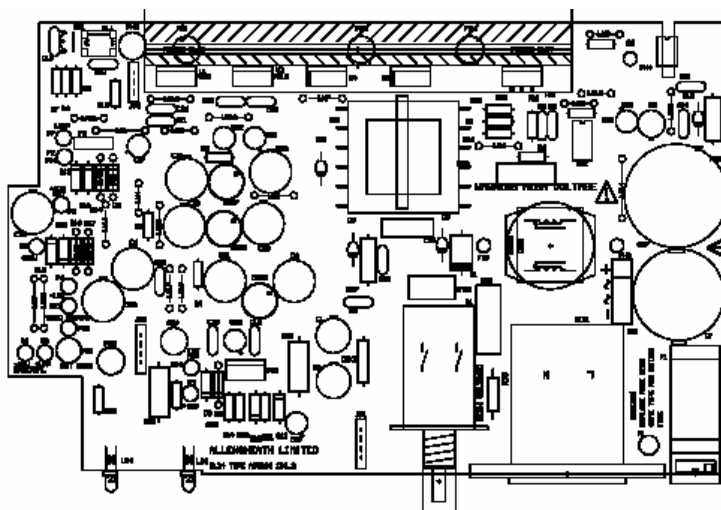
Master connector 003-229



Master O/P connector 003-246



DC power connector PCB 003-372



PSU PCB 003-230