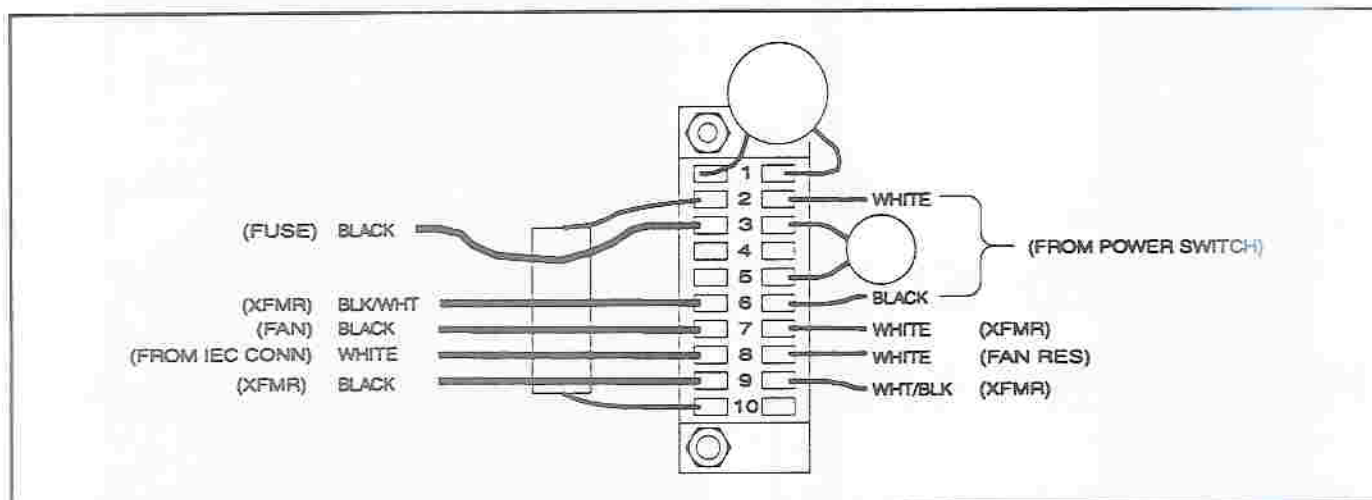


ADDENDUM

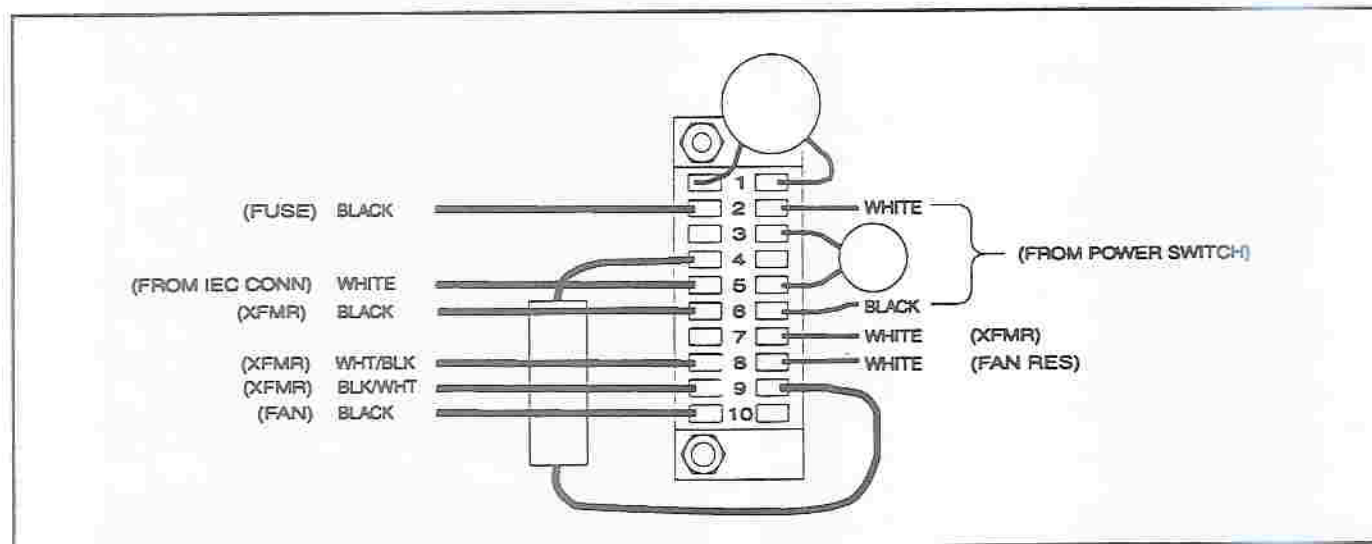
9444B and AP2600A

OPERATING AND SERVICE INSTRUCTIONS

Figure 2 of the AP2600A Operating and Service Instructions (Part Number 42-02-037639) illustrates how to modify the unit for 120Vac or 220/240Vac operation. The wiring diagram shown in the manual is incorrect. Please replace Figure 2 with the diagram below which illustrates the correct wiring.

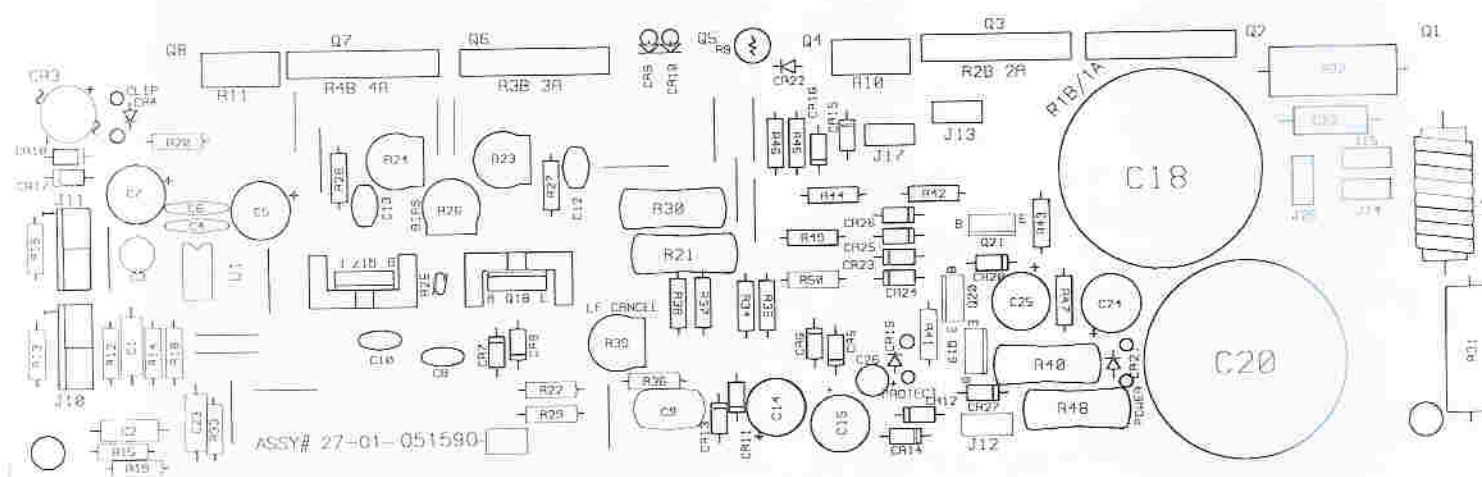
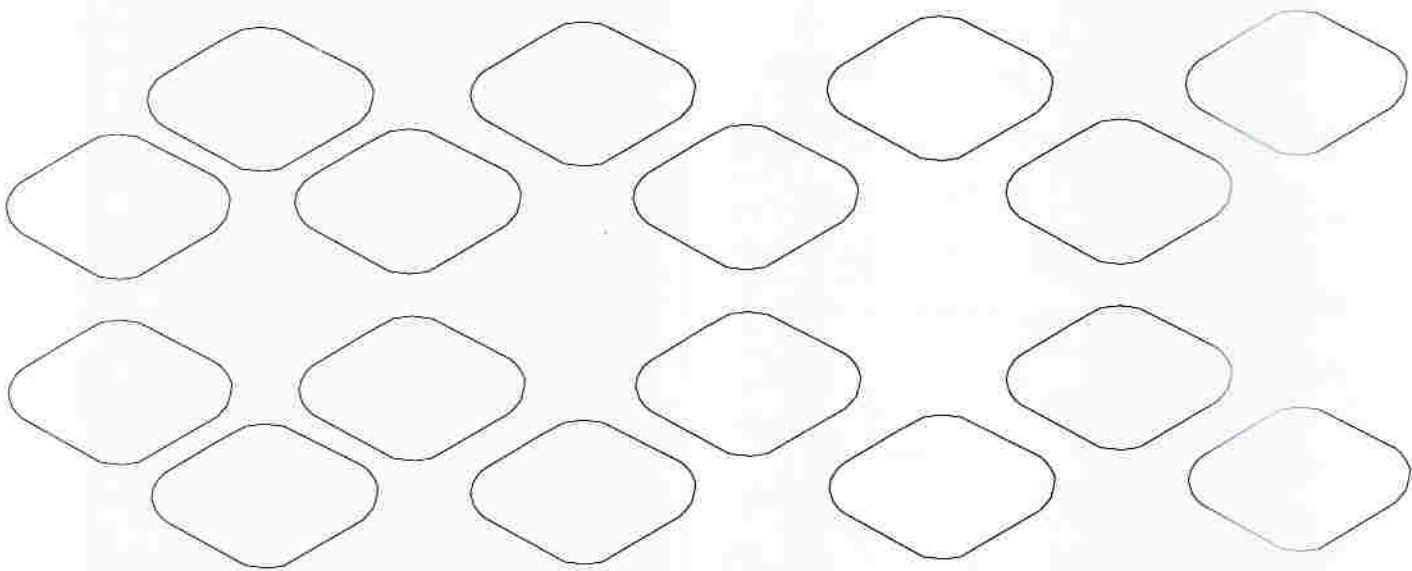
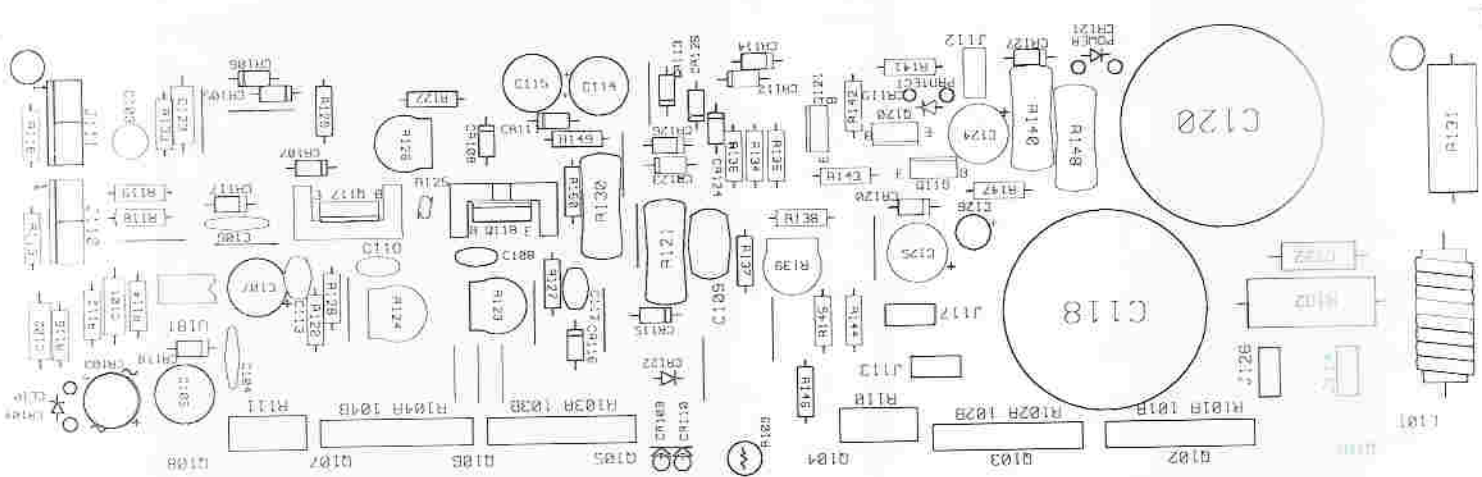


Primary Wiring for 120Vac Operation

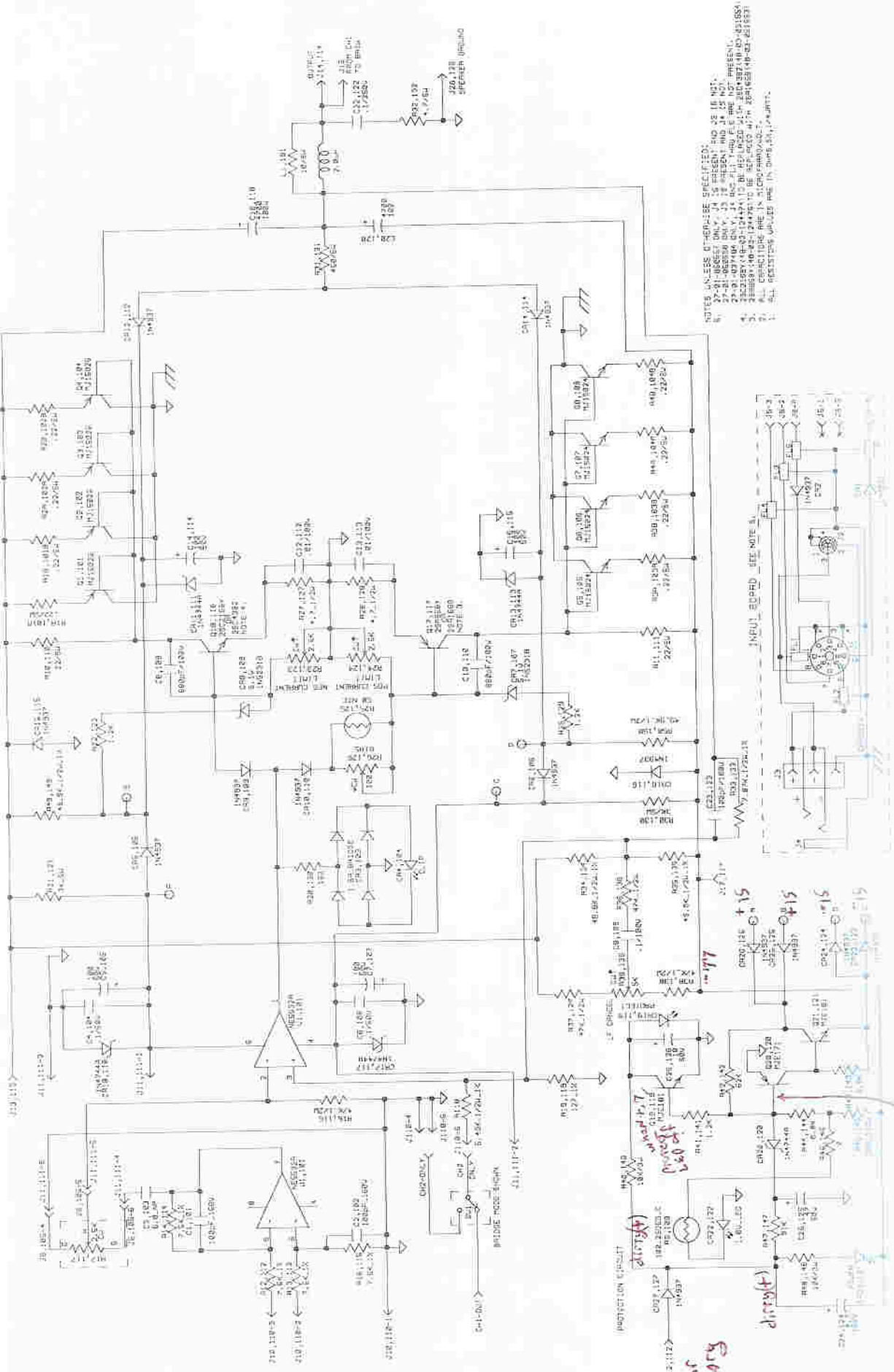


Primary Wiring for 220/240Vac Operation

Replaces Figure 2 on Page 2



Replaces Figure 12 on Page 17

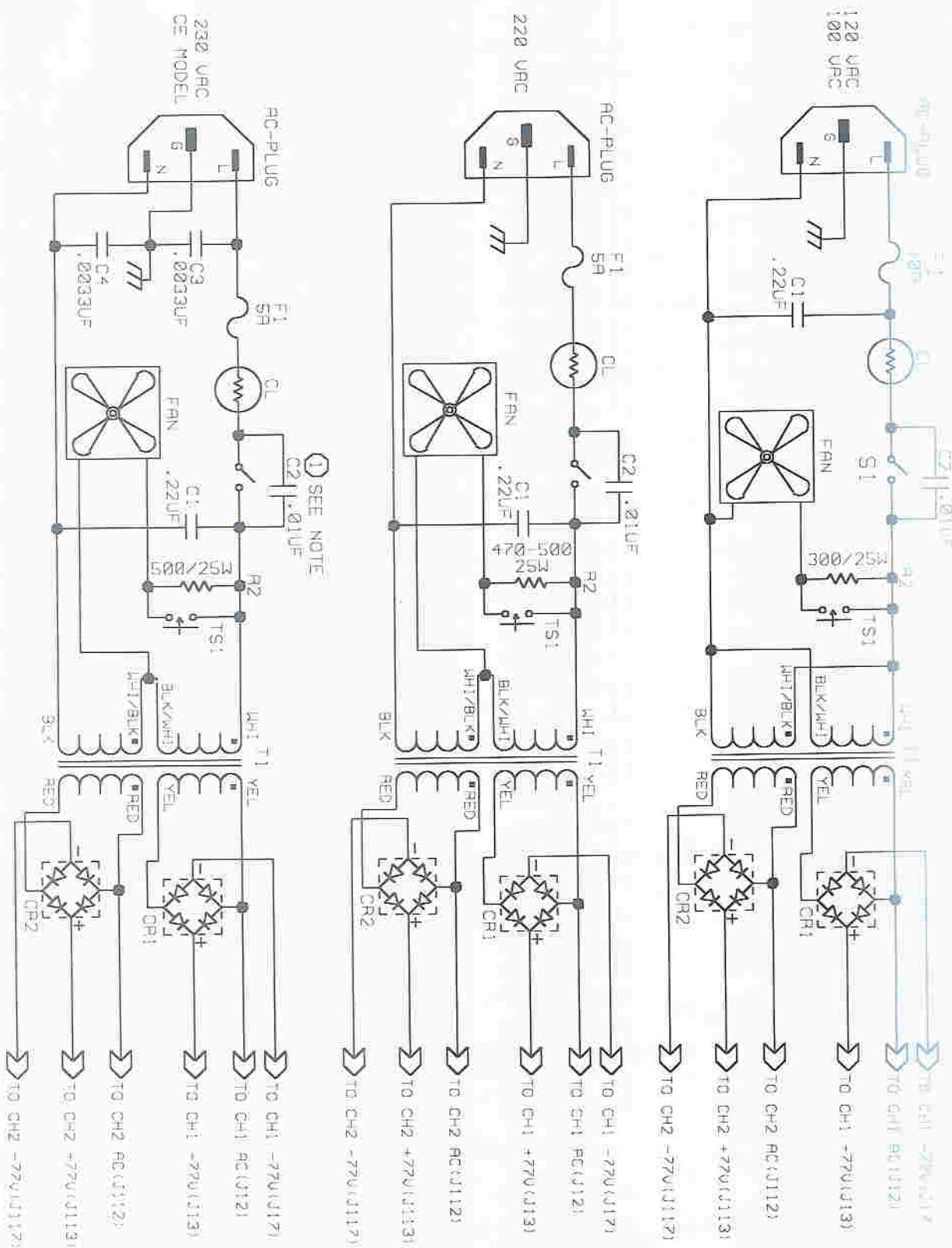


- NOTES UNLESS OTHERWISE SPECIFIED:
1. ALL RESISTORS UNLESS NOTED ARE 1% TOLERANCE.
 2. ALL CAPACITORS UNLESS NOTED ARE 5% TOLERANCE.
 3. ALL DIODES UNLESS NOTED ARE 1N4001 TYPE.
 4. ALL TRANSISTORS UNLESS NOTED ARE 2N3055 TYPE.
 5. ALL COMPONENTS UNLESS NOTED ARE 1/4 WATT.
 6. ALL COMPONENTS UNLESS NOTED ARE 1/2 WATT.
 7. ALL COMPONENTS UNLESS NOTED ARE 1 WATT.
 8. ALL COMPONENTS UNLESS NOTED ARE 2 WATT.
 9. ALL COMPONENTS UNLESS NOTED ARE 5 WATT.
 10. ALL COMPONENTS UNLESS NOTED ARE 10 WATT.
 11. ALL COMPONENTS UNLESS NOTED ARE 20 WATT.
 12. ALL COMPONENTS UNLESS NOTED ARE 50 WATT.
 13. ALL COMPONENTS UNLESS NOTED ARE 100 WATT.
 14. ALL COMPONENTS UNLESS NOTED ARE 200 WATT.
 15. ALL COMPONENTS UNLESS NOTED ARE 500 WATT.
 16. ALL COMPONENTS UNLESS NOTED ARE 1000 WATT.
 17. ALL COMPONENTS UNLESS NOTED ARE 2000 WATT.
 18. ALL COMPONENTS UNLESS NOTED ARE 5000 WATT.
 19. ALL COMPONENTS UNLESS NOTED ARE 10000 WATT.
 20. ALL COMPONENTS UNLESS NOTED ARE 20000 WATT.
 21. ALL COMPONENTS UNLESS NOTED ARE 50000 WATT.
 22. ALL COMPONENTS UNLESS NOTED ARE 100000 WATT.
 23. ALL COMPONENTS UNLESS NOTED ARE 200000 WATT.
 24. ALL COMPONENTS UNLESS NOTED ARE 500000 WATT.
 25. ALL COMPONENTS UNLESS NOTED ARE 1000000 WATT.

Replaces Figure 13 on Page 18

PSU sec
protection circuit

input board
distort



① ON FSSV NO. 120153 C2 15 .0033UF 115-07-1249931.

Replaces Figure 13 on Page 19

Component Parts Listing for the AP2600A

Main P.C.B.

Reference Designator	Ordering Number	Name and Description
R1, R2, R3, R4	47-09-125029	Resistor, 2 x 0.22 Ω , 5 watt, 5%
R9	47-09-125181	Resistor, 100 Ω @25°C, Positive Temperature Coefficient
R10, R11	47-01-125064	Resistor, 22 Ω , 5 watt, 5%
R12, R13, R14, R15	47-03-124805	Resistor, 7.5 k Ω , 0.25 watt, 1%, metal film
R16, R36, R37, R38	47-01-102119	Resistor, 47 k Ω , 0.25 watt, 5%, carbon film
R18	47-03-125185	Resistor, 5.49 k Ω , 0.5 watt, 1% metal film
R19	47-01-125099	Resistor, 127 Ω , 0.25 watt, 1% metal film
R20	47-01-102059	Resistor, 160 Ω , 0.25 watt, 5% carbon film
R21, R30	47-01-125102	Resistor, 3 k Ω , 5 watt, 5%
R22, R29, R41	47-01-102080	Resistor, 1.2 k Ω , 0.25 watt, 5% carbon film
R23, R24	47-06-027458	Trimpot, 2.5 k Ω , 0.15 watt, horizontal mount
R25	47-09-125021	Resistor, 50 Ω @25°C, Negative Temperature Coefficient
R26	47-06-036008	Trimpot, 100 Ω , 0.15 watt, horizontal mount
R27, R28	47-01-102208	Resistor, 4.7 Ω , 0.5 watt, 5%
R31	47-01-125028	Resistor, 450 Ω , 5 watt, 5%
R32	47-01-124834	Resistor, 4.7 Ω , 5 watt, 5%
R33	47-03-125106	Resistor, 7.87 k Ω , 0.5 watt, 1% metal film
R34, R35, R49, R50	47-03-125033	Resistor, 49.9 k Ω , 0.5 watt, 1% metal film
R39	47-06-027459	Trimpot, 5 k Ω , 0.15 watt, horizontal mount
R40, R48	47-01-125066	Resistor, 10 k Ω , 3 watt, 5%
R42	47-01-102122	Resistor, 62 k Ω , 0.25 watt, 5% carbon film
R43, R44	47-01-102098	Resistor, 6.8 k Ω , 0.25 watt, 5% carbon film
R45	47-01-028531	Resistor, 39 k Ω , 0.5 watt, 5% carbon film
R46	21-01-110310	Resistor, 0 Ω jumper
R47	47-01-102126	Resistor, 91 k Ω , 0.25 watt, 5% carbon film
C1, C2, C23	15-06-037468	Capacitor, 100 pF, 160 volt, 5%, polypropylene
C3	15-01-125026	Capacitor, 6.8 μ F, 50 VDC, non-polar, Aluminum
C4, C6	15-02-124437	Capacitor, 0.1 μ F, 50 VDC, ceramic disk
C5, C7	15-01-124503	Capacitor, 100 μ F, 50 VDC, Aluminum
C8, C10	15-06-037792	Capacitor, 680 pF, 100 VDC, 5%, polypropylene
C9	15-06-124637	Capacitor, 0.1 μ F, 100 VDC, 5%, polypropylene
C12, C13	15-06-124588	Capacitor, 0.01 μ F, 100 VDC, 5%, polypropylene
C18, C20	15-01-036110	Capacitor, 4700 μ F, 100 VDC, Aluminum, 10%
C22	15-06-100113	Capacitor, 0.1 μ F, 250 VDC, 10%, Polyester
C24	15-01-125024	Capacitor, 4.7 μ F, 160 VDC, Aluminum
C25	15-01-124508	Capacitor, 47 μ F, 50 VDC, Aluminum
C26	15-01-124502	Capacitor, 10 μ F, 50 VDC, Aluminum
L1	56-01-026510	Inductor, 2.0 μ H, choke
CR9, CR5, CR6, CR10, CR12	48-01-125067	Diode, 1N4937, fast recovery rectifier
CR14, CR15, CR16, CR23		
CR24, CR25, CR26, CR27		
CR3	48-02-037580	Bridge Rectifier, 1.5 Amp, 70V
CR4, CR19, CR21	39-01-124540	LED, red, with 12 inch leads
CR7, CR8	48-01-122988	Zener, 1N5231B, 5.1 volt, 0.5 watt, 5%
CR11, CR13, CR17, CR18, CR20	48-01-125098	Zener, 1N4744A, 15.0 volt, 1 watt, 5%
CR22	39-01-121926	LED, red, T1-3/4
U1	17-01-122832	IC, NE5532A

Replaces Page 20

Main P.C.B. (continued)

Reference Designator	Ordering Number	Name and Description
Q1, Q2, Q3, Q4	48-03-122979	Transistor, MJ15025, PNP
Q5, Q6, Q7, Q8	48-03-122978	Transistor, MJ15024, NPN
Q17	48-03-051553	Transistor, 2SA1668, PNP
Q18	48-03-051554	Transistor, 2SC4382, NPN
Q19, Q21	48-03-050570	Transistor, MJE181(2), NPN
Q20	48-03-050571	Transistor, MJE171(2), PNP

Input P.C.B.

Reference Designator	Ordering Number	Name and Description
	21-01-013567	Jumper, octal socket, gold flash
	27-01-025898600	Wire prep (AP2600ASA)
	28-08-051847	Adapter bushing (AP2600ASA)
	31-02-038104	Insul. fppr (AP2600ASA)
R17 (AP2600A)	47-06-124795	Potentiometer, 2.5 k Ω , log taper, 20%
R17 (AP2600ASA)	47-06-124578	Stepped Attenuator, 2.5 k Ω
CR1, CR2	48-01-125067	Diode, 1N4937, fast recovery rectifier
FL1-FL6 (27-01-050558) (assembly only)	56-01-050483	EMC filter

Chassis

Reference Designator	Ordering Number	Name and Description
C1	15-02-124994	Capacitor, 0.22 μ F, 250 VAC
C2	15-02-026884	Capacitor, 0.01 μ F 250V
CR1, CR2	48-02-122651	Bridge Rectifier, 25 amp, 400 volt
F1	51-04-105890	Fuse, 10 amp, 250 volt, NB-UL-CER
F1 (220VAC to 240 VAC line only)	51-04-100470	Fuse, 5 amp, 250 volt, NB-UL-GLS
R2	47-02-123106	Resistor, 300 Ω , 25 watt, 5%
R2 (220 VAC to 240 VAC line only)	47-02-038457	Resistor, 500 Ω , 25 W
CL	53-02-125179	Surge suppressor, NTC Thermistor
S1	51-02-124582	Switch, power
T1	56-08-027782	Transformer, power
TS1	53-01-027945	Thermostat, 190 $^{\circ}$ F, normally open
	28-13-026422	Hardware, rack mount
	35-01-124521	Fan, equipment cooling, 105 CFM
	24-04-124846	Knob, black (AP2600A)
	24-04-122894	Knob, black (AP2600ASA)
	24-01-026069	Decal (AP2600ASA)