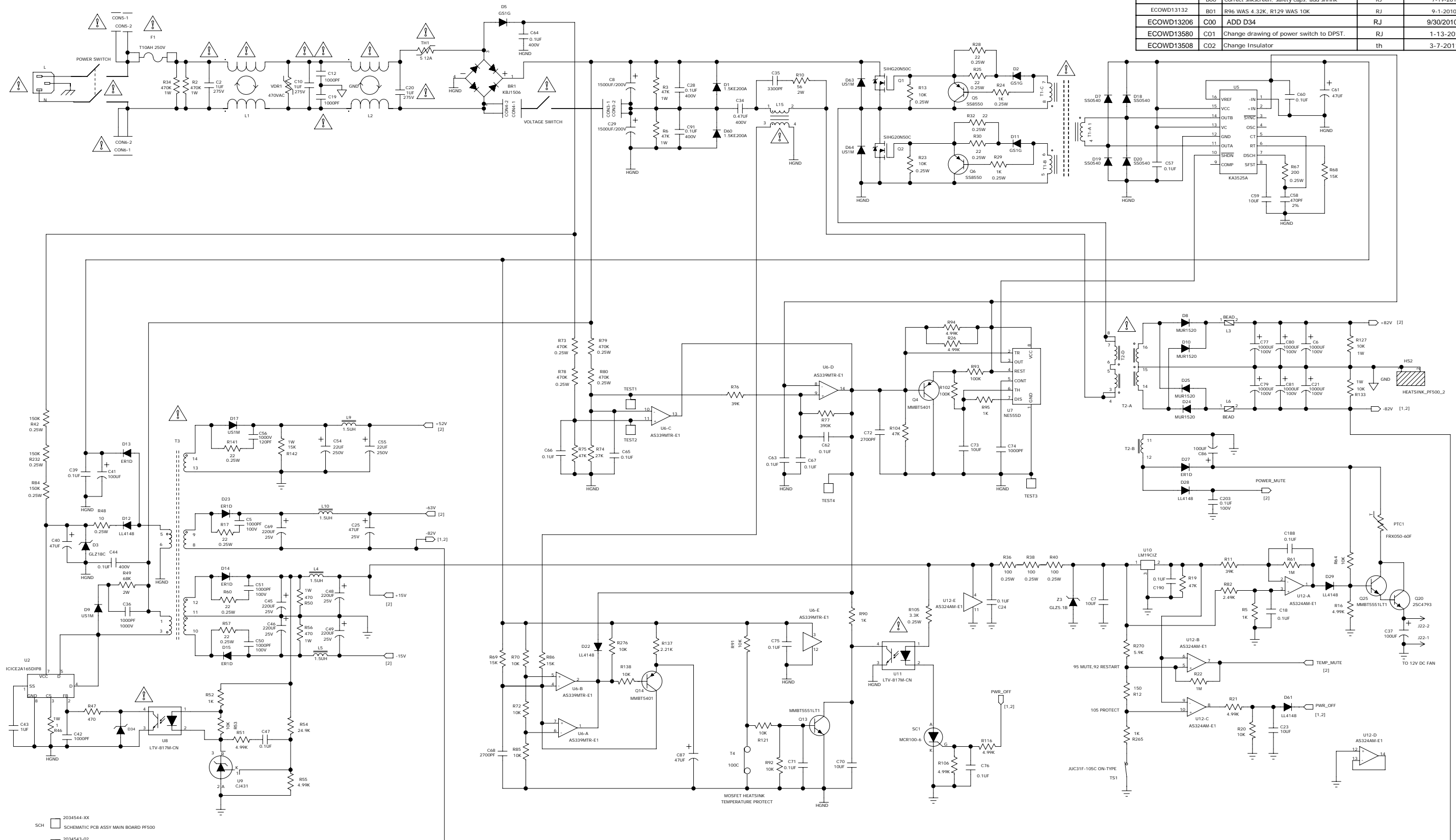
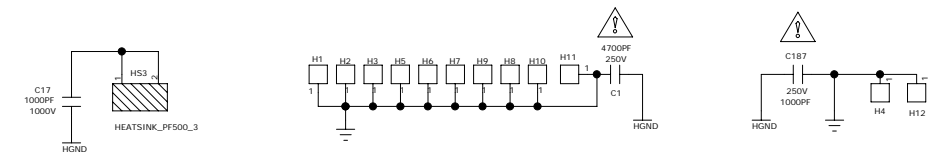


ECO/DSR	REV.	DESCRIPTION	REV. BY.	DATE
ECOWD12834	100	RELEASE TO PROTOTYPE	YOUNG	12.25.2009
	101	RELEASE TO PROTOTYPE	YOUNG	1.14.2010
	102	CHANGE R63 R65 FROM 75K TO 39K REMOVE PF800 SECTION	YOUNG	3.27.2010
	200	RELEASE TO PROTOTYPE	YOUNG	4.14.2010
ECOWD12896	A00	RELEASE TO PILOT	YOUNG	6.19.2010
ECOWD12993	B00	Correct silkscreen: safety caps: add shrink	RJ	7-19-2010
ECOWD13132	B01	R96 WAS 4.32K, R129 WAS 10K	RJ	9-1-2010
ECOWD13206	C00	ADD D34	RJ	9/30/2010
ECOWD13580	C01	Change drawing of power switch to DPST.	RJ	1-13-2011
ECOWD13508	C02	Change Insulator	th	3-7-2011



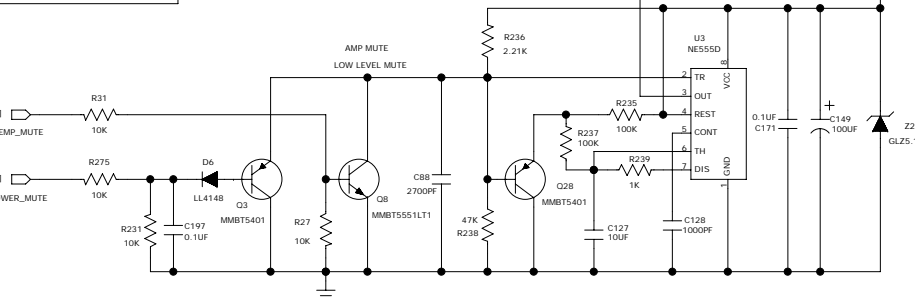
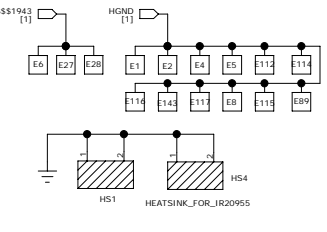
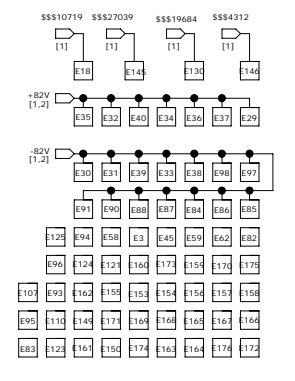
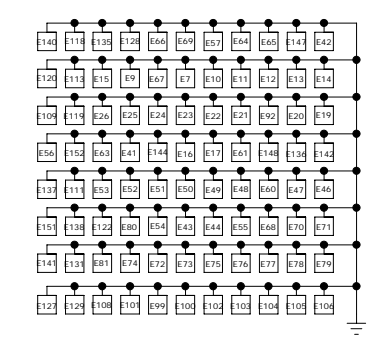
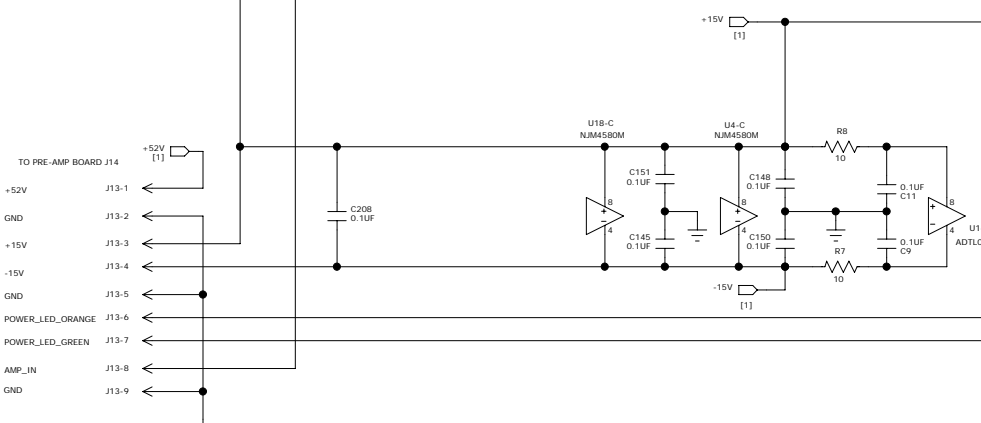
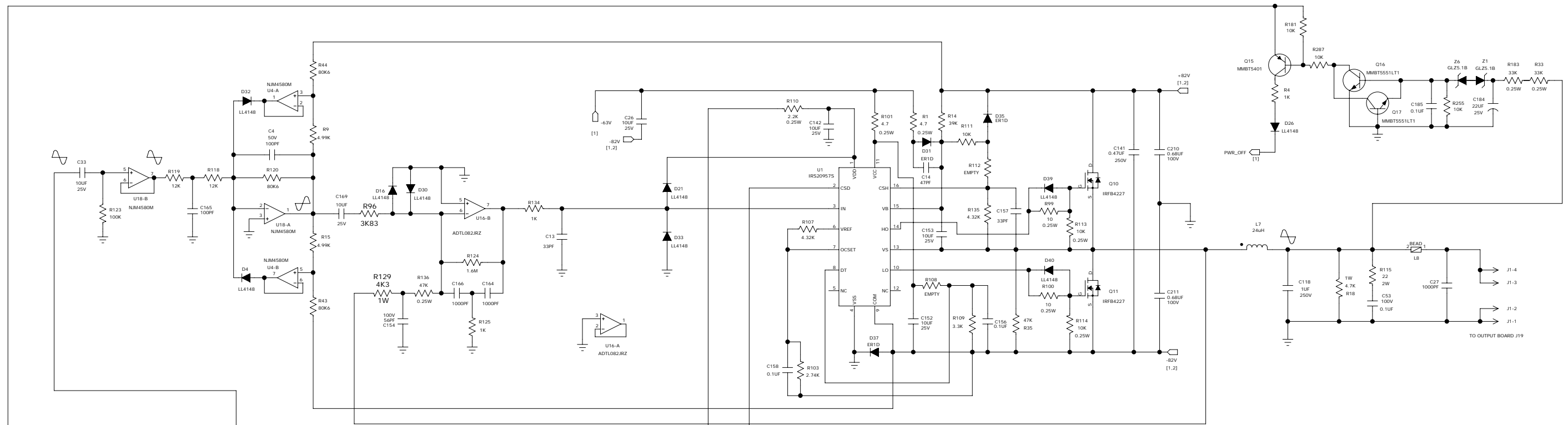
- SCH 2034544-XX SCHEMATIC PCB ASSY MAIN BOARD PF500
- PCB 2034543-02 PCB FAB MAIN BOARD PF500
- FORC34 0032291 SHRINK TUBE 18X40MM
- FORH11 0032291 SHRINK TUBE 18X40MM
- FORL316 0025312 WIRE JUMPER 20AWG 60MM
- FORL7 0021206 TIE WRAP 4.5" LG
- FORC141 0032291 SHRINK TUBE 18X40MM
- FORC118 0032291 SHRINK TUBE 18X40MM



APPROVALS		DATE
DRAWN: YOUNG		12.25.2009
CHECKED: RJ		9/30/2010
NP ENG:		
MATERIAL:		
MFG:		
MFG ENG:		
ISSUED:		

<b>LOUD</b>		TECHNOLOGIES INC. WOODINVILLE WA. USA	
<b>PF500 MAIN POWER SUPPLY SECTION</b>			
SIZE: D	SCALE: NONE	DWG. NO: 2034544-XX	REV. C02
DWG. FILE:		SHEET 1 OF 2	



- INS8  0027081 INSULATOR 19.4X14X2MM CER
- INS7  0027081 INSULATOR 19.4X14X2MM CER
- INS6  0027081 INSULATOR 19.4X14X2MM CER
- INS5  0027081 INSULATOR 19.4X14X2MM CER
- INS4  0027081 INSULATOR 19.4X14X2MM CER
- INS2  0027081 INSULATOR 19.4X14X2MM CER

- SCR13  0026671 SCR SEMS M3X10 PNH PHILLIP STL NICKEL
- SCR12  0026671 SCR SEMS M3X10 PNH PHILLIP STL NICKEL
- SCR7  0026673 SCR SEMS M3X12 PNH PHILLIP STL NICKEL
- SCR6  0026673 SCR SEMS M3X12 PNH PHILLIP STL NICKEL
- SCR5  0026673 SCR SEMS M3X12 PNH PHILLIP STL NICKEL
- SCR2  0026673 SCR SEMS M3X12 PNH PHILLIP STL NICKEL
- SCR4  0026671 SCR SEMS M3X10 PNH PHILLIP STL NICKEL
- SCR1  0026671 SCR SEMS M3X10 PNH PHILLIP STL NICKEL
- CLP2  FIT PART SVT-7PRO (Bar Clamp)
- CLP1  FIT PART SVT-7PRO (Bar Clamp)

- SCR15  0026671 SCR SEMS M3X10 PNH PHILLIP STL NICKEL
- SCR14  0026671 SCR SEMS M3X10 PNH PHILLIP STL NICKEL
- PLT1  PLATE 25X19X1MM CER
- INS3  INSULATOR HEATSINK 1 PF500
- INS1  INSULATOR HEATSINK 2 PF500
- SCR11  0029375 SCR SEMS M3X16 PNH PHILLIP STL NICKEL
- SCR10  0029375 SCR SEMS M3X16 PNH PHILLIP STL NICKEL
- SCR9  0029375 SCR SEMS M3X16 PNH PHILLIP STL NICKEL
- SCR8  0029375 SCR SEMS M3X16 PNH PHILLIP STL NICKEL
- SCR3  0029375 SCR SEMS M3X16 PNH PHILLIP STL NICKEL

- MISC1  730-001-00 THERMAL COMPOUND
- MISC2  2034504 SILICONE RTV
- SCR18  0029375 SCR SEMS M3X16 PNH PHILLIP STL NICKEL
- SCR17  0026673 SCR SEMS M3X12 PNH PHILLIP STL NICKEL
- SCR16  0026673 SCR SEMS M3X12 PNH PHILLIP STL NICKEL
- HS10  HEATSINK FOR IC HD SERIES
- HS5  2035269 HEATSINK 1 PF500
- HS6  2035270 HEATSINK 2 PF500
- HS7  2035271 HEATSINK 3 PF500
- PLT2  PLATE 25X19X1MM CER

APPROVALS		DATE	 TECHNOLOGIES INC. WOODINVILLE WA. USA		
DRAWN:	YOUNG	12.25.2009			
CHECKED:			CLASS_D AMP SECTION		
NP ENG:			SIZE	SCALE:	DWG. NO.
MATERIAL:			D	NONE	2034544-XX
MFG ENG:			ISSUED:		REV. C02
			DWG FILE:		SHEET 2 OF 2