
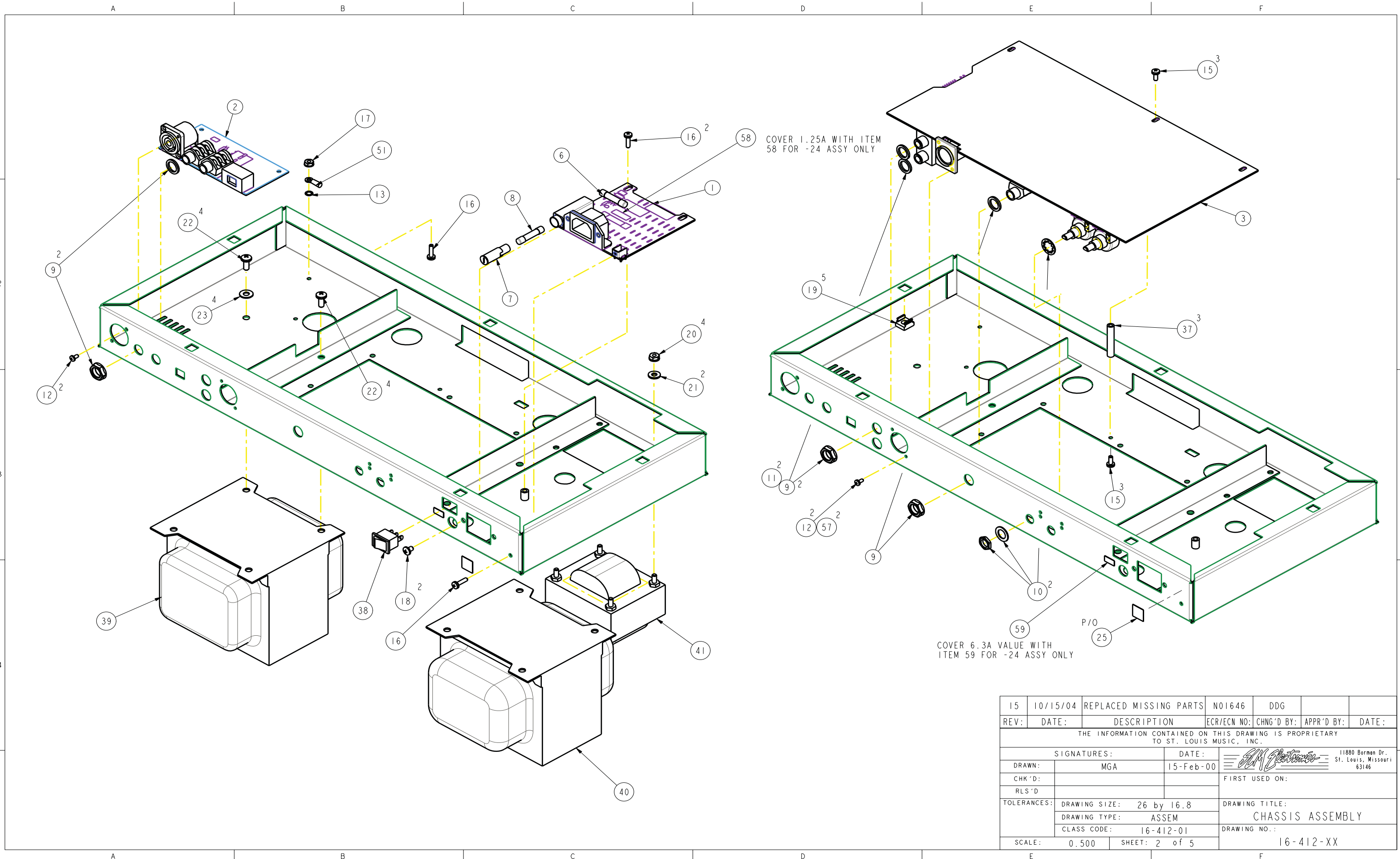

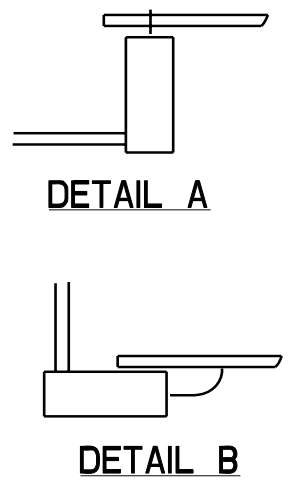
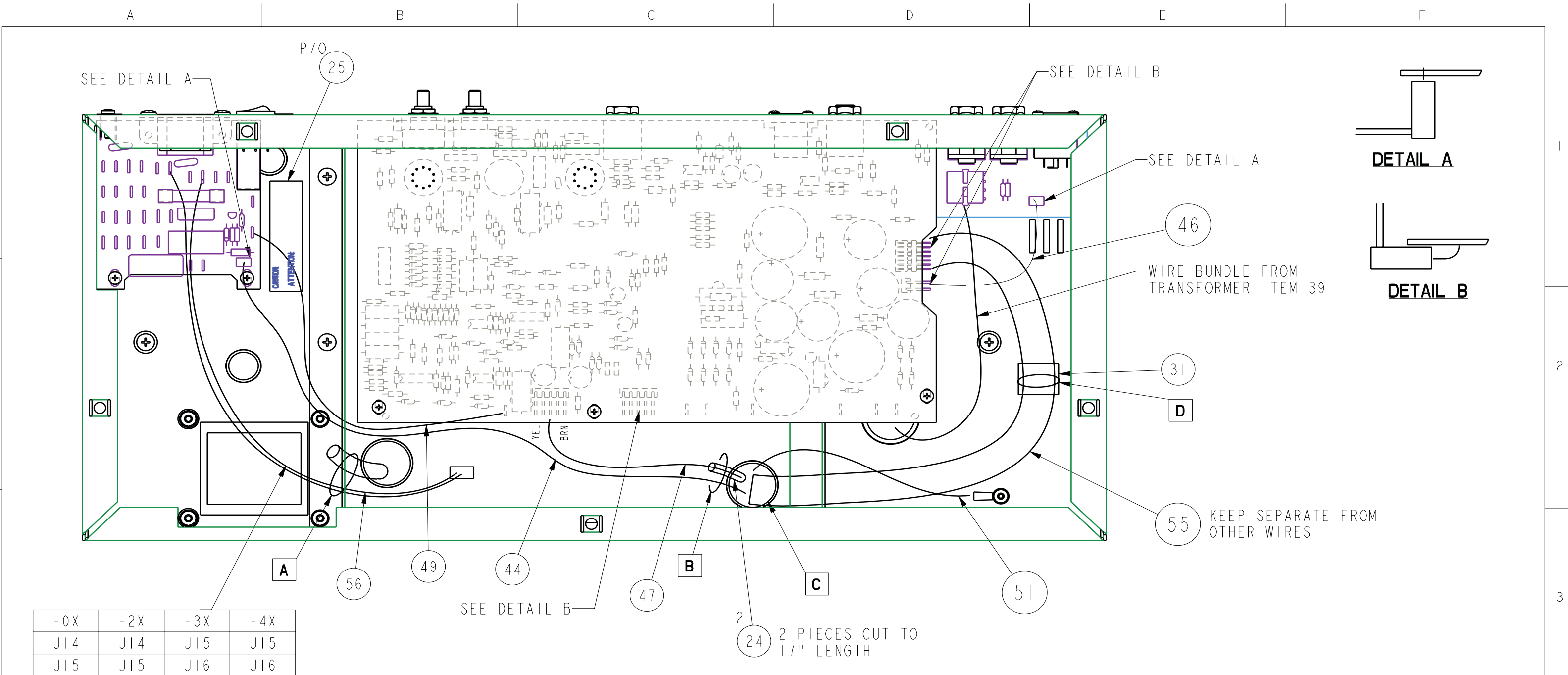


15	10/15/04	REPLACED MISSING PARTS	N01646	DDG		
14	08/20/02	ADDED FUSES & LABELS	N00913	JRC		
13	01/18/02	CHNG'D 47-000-02 TO P/O 47-000-01 ADDED 1 68-001-01	N00740	DDA		
12	02/21/00	REVISED AND REDRAWN AS	N00222	MGA		
11	09/15/98	SEE ECO FOR REV HISTORY AND AUTOMATE BOM	980531 980513	JRC		
10	07/27/98	REMOVED 30-013-01 ADDED 30-637-02	970504 980466	MAG		
9	03/16/98	ADDED 47-000-01 / DELETE ONE CABLE TIE MADE CHANGES PER MARKUP	980113	DDA		
8	01/05/98	ADDED 240V WIRING	970831	MAG		
7	09/16/97	CHGD QTY OF 81-404-01 FROM 1 TO 2 MOVED 47-000-02 TO OUTSIDE OF CHASSIS	970525	MAG		
6	07/08/97	CHANGED FUSE INFO	970341	DDA		
5	12/23/96	REV PER 950562	950562	LMA		
4	01/16/96	ADD PREP TO 230V WIRING	950271	DMM		
3	11/21/95	ADD 68-001-91 (CABLE TIE ANCHOR) 68-001-01 (CABLE TIE)	950379	DMM		
2	10/03/94	ADDED NOTE		GM		
1	04/13/94	CHANGED 15A FUSE TO 10A		GM		

REV:	DATE:	DESCRIPTION	ECR/ECN NO:	CHNG'D BY:	APPR'D BY:	DATE:
THE INFORMATION CONTAINED ON THIS DRAWING IS PROPRIETARY TO ST. LOUIS MUSIC, INC.						
SIGNATURES:		DATE:	 11880 Borman Dr. St. Louis, Missouri 63146			
DRAWN:	MGA	15-Feb-00	FIRST USED ON:			
CHK'D:						
RLS'D:						
TOLERANCES:	DRAWING SIZE: 26 by 16.8	DRAWING TITLE:		CHASSIS ASSEMBLY		
	DRAWING TYPE: ASSEM	DRAWING NO.:		16-412-XX		
	CLASS CODE: 16-412-01	SCALE: 0.400		SHEET: 1 of 5		



15	10/15/04	REPLACED MISSING PARTS	N01646	DDG		
REV:	DATE:	DESCRIPTION	ECR/ECN NO:	CHNG'D BY:	APPR'D BY:	DATE:
THE INFORMATION CONTAINED ON THIS DRAWING IS PROPRIETARY TO ST. LOUIS MUSIC, INC.						
SIGNATURES:			DATE:			
DRAWN:	MGA		15-Feb-00		11880 Borman Dr., St. Louis, Missouri 63146	
CHK'D:					FIRST USED ON:	
RLS'D:						
TOLERANCES:	DRAWING SIZE: 26 by 16.8			DRAWING TITLE:		
	DRAWING TYPE: ASSEM			CHASSIS ASSEMBLY		
	CLASS CODE: 16-412-01			DRAWING NO.:		
SCALE:	0.500	SHEET:	2 of 5	16-412-XX		



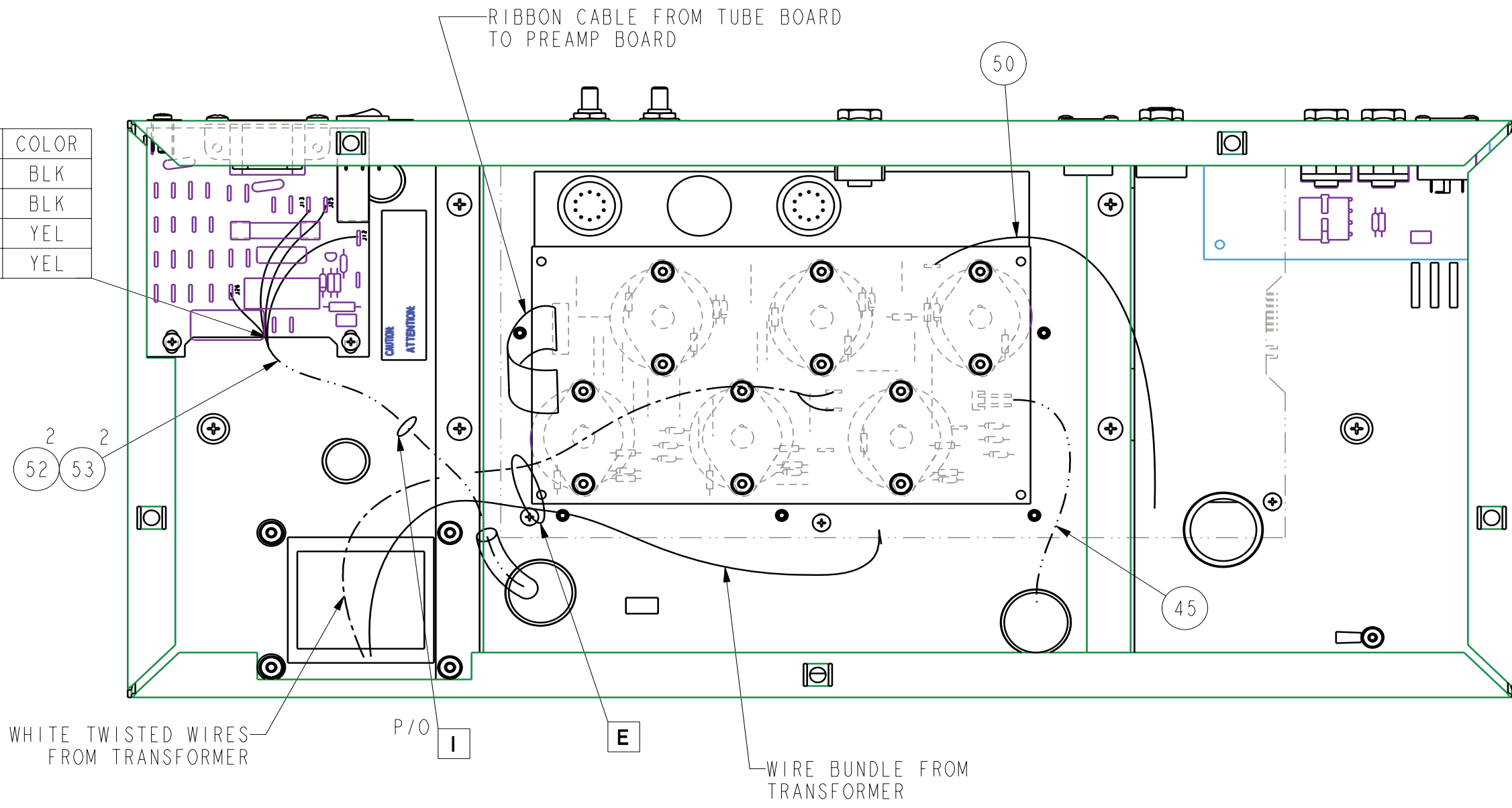
-0X	-2X	-3X	-4X
J14	J14	J15	J15
J15	J15	J16	J16

**WIRE TIE LOCATIONS**

- A) TIE FAN WIRES TO TUBING
- B) TIE TUBE TO SECONDARY WIRES
- C) TIE ALL WIRES AS THEY COME THRU GROMMET
- D) TIE RIBBON CABLE TO ADHESIVE WIRE TAB


15	10/15/04	REPLACED MISSING PARTS	N01646	DDG		
REV:	DATE:	DESCRIPTION	ECR/ECN NO:	CHNG'D BY:	APPR'D BY:	DATE:
THE INFORMATION CONTAINED ON THIS DRAWING IS PROPRIETARY TO ST. LOUIS MUSIC, INC.						
SIGNATURES:			DATE:		11880 Borman Dr. St. Louis, Missouri 63146	
DRAWN:	MGA		18-Feb-00	FIRST USED ON:		
CHK'D:						
RLS'D:						
TOLERANCES:	DRAWING SIZE:	B		DRAWING TITLE:		
	DRAWING TYPE:	ASSEM		CHASSIS ASSEMBLY		
	CLASS CODE:			DRAWING NO.:		
SCALE:	0.500	SHEET:	3 of 5		16-412-XX	

J-NO	COLOR
J12	BLK
J13	BLK
J25	YEL
J26	YEL



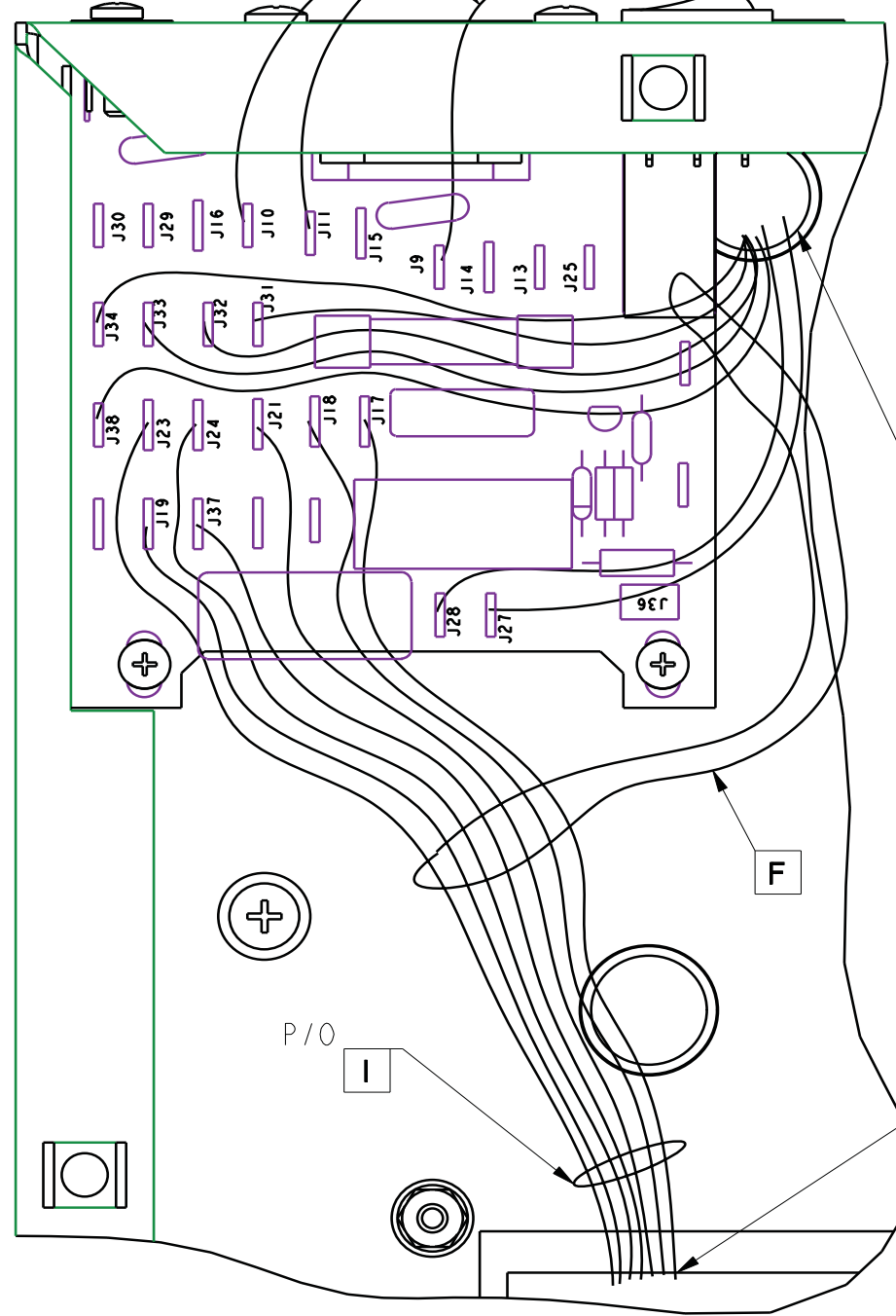
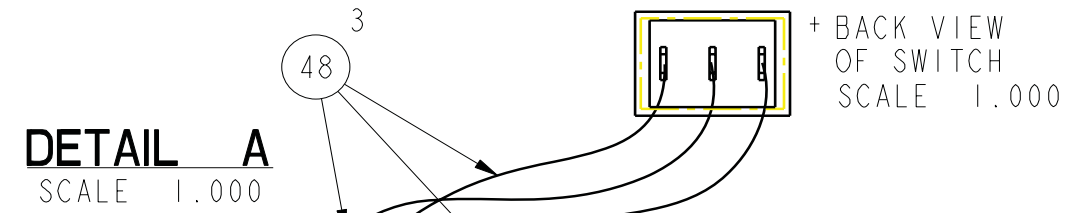
**WIRE TIE LOCATIONS**

- E) TIE SECONDARY WIRES AND PREPS TO HOLE IN PC BOARD
- I) TIE SWITCH WIRES TO PRIMARY WIRES

15	10/15/04	REPLACED MISSING PARTS	N01646	DDG		
REV:	DATE:	DESCRIPTION	ECR/ECN NO:	CHNG'D BY:	APPR'D BY:	DATE:
THE INFORMATION CONTAINED ON THIS DRAWING IS PROPRIETARY TO ST. LOUIS MUSIC, INC.						
SIGNATURES:			DATE:		 11880 Borman Dr. St. Louis, Missouri 63146	
DRAWN:	MGA		18-Feb-00	FIRST USED ON:		
CHK'D:						
RLS'D:						
TOLERANCES:	DRAWING SIZE:	B	DRAWING TITLE:		CHASSIS ASSEMBLY	
	DRAWING TYPE:	ASSEM	DRAWING NO.:		16-412-XX	
	CLASS CODE:					
SCALE:	0.500	SHEET:	4 of 5			

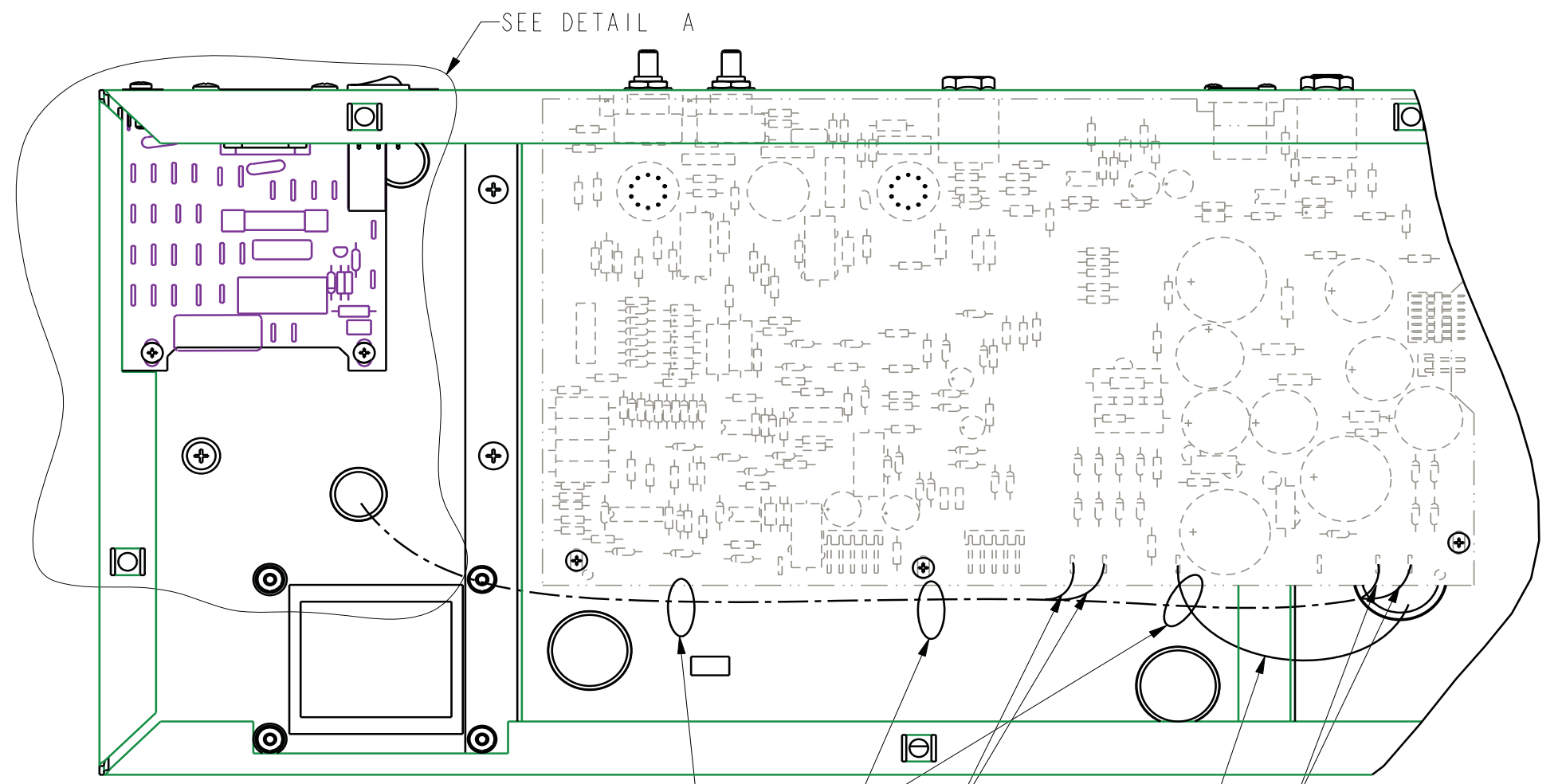
**WIRE TIE LOCATIONS**

- F) TIE PRIMARY WIRES AS SHOWN
- G) TIE ALL WIRES THAT ROUTE THRU THIS AREA
- H) TIE ALL WIRES THAT ROUTE THRU THIS AREA EXCEPT FAN WIRES



COLOR	-0X	-2X	-3X	-4X
BLK	J27	J33	J38	J27
BRN	J28	J34	J30	J30
WHT	J31	J31	J29	J29
BRN-WHT	J32	J32	J32	J32
BLU	J33	J27	J33	J33
GRY	J34	J28	J34	J34
BLU-WHT	J38	J38	J27	J38

COLOR	-0X	-2X	-3X	-4X
BLK	J17	J23	J37	J17
BRN	J18	J24	J20	J20
BLU-WHT	J37	J37	J17	J37
WHT	J21	J21	J19	J19
BLU	J23	J17	J23	J23
GRY	J24	J18	J24	J24
VIO	J22	J22	J22	J22



TWIST TOGETHER RED WIRES

TWIST TOGETHER YEL-BLU WIRES

RED-WHT WIRE FROM TRANSFORMER

15	10/15/04	REPLACED MISSING PARTS	N01646	DDG		
REV:	DATE:	DESCRIPTION	ECR/ECN NO:	CHNG'D BY:	APPR'D BY:	DATE:
THE INFORMATION CONTAINED ON THIS DRAWING IS PROPRIETARY TO ST. LOUIS MUSIC, INC.						
SIGNATURES:			DATE:		11880 Borman Dr. St. Louis, Missouri 63146	
DRAWN:	MGA	18-Feb-00		FIRST USED ON:		
CHK'D:						
RLS'D:						
TOLERANCES:	DRAWING SIZE:	B		DRAWING TITLE:		
	DRAWING TYPE:	ASSEM		CHASSIS ASSEMBLY		
	CLASS CODE:			DRAWING NO.:		
SCALE:	0.500	SHEET:	5 of 5		16-412-XX	