

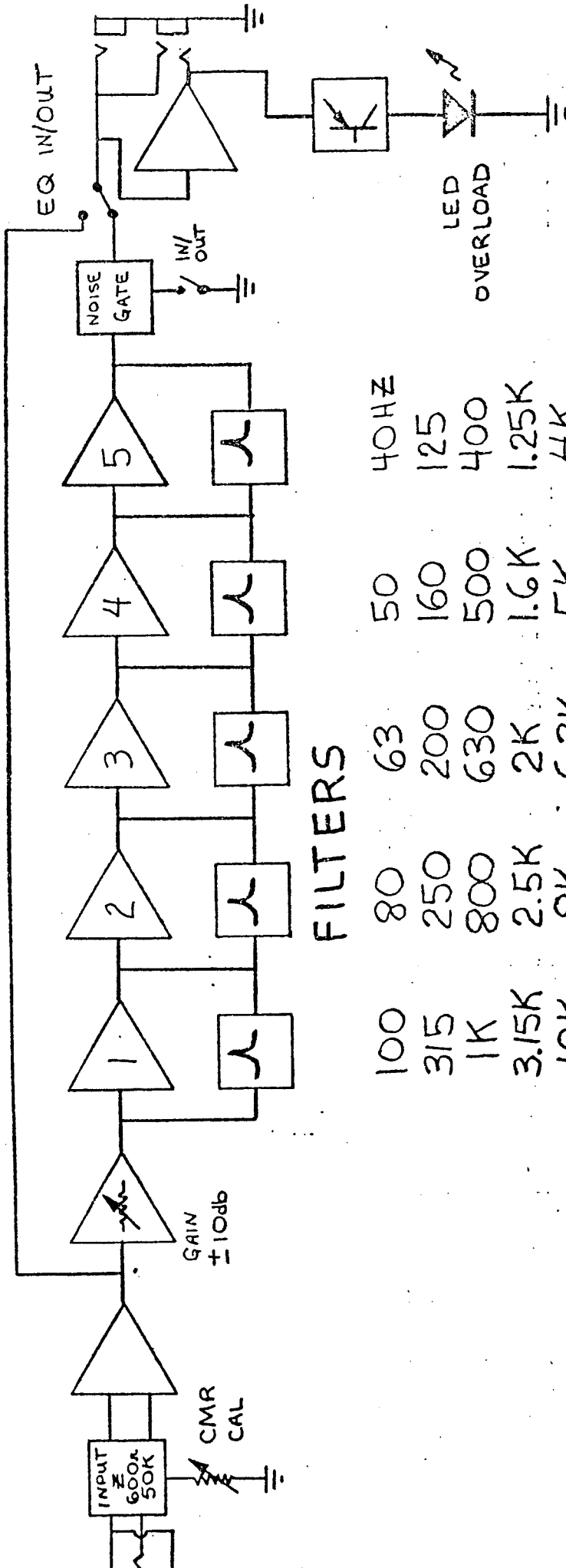
EQ 270

Schematic Manual



10074 SW Arctic Drive Beaverton, OR 97005 503-641-7287

MIXERS



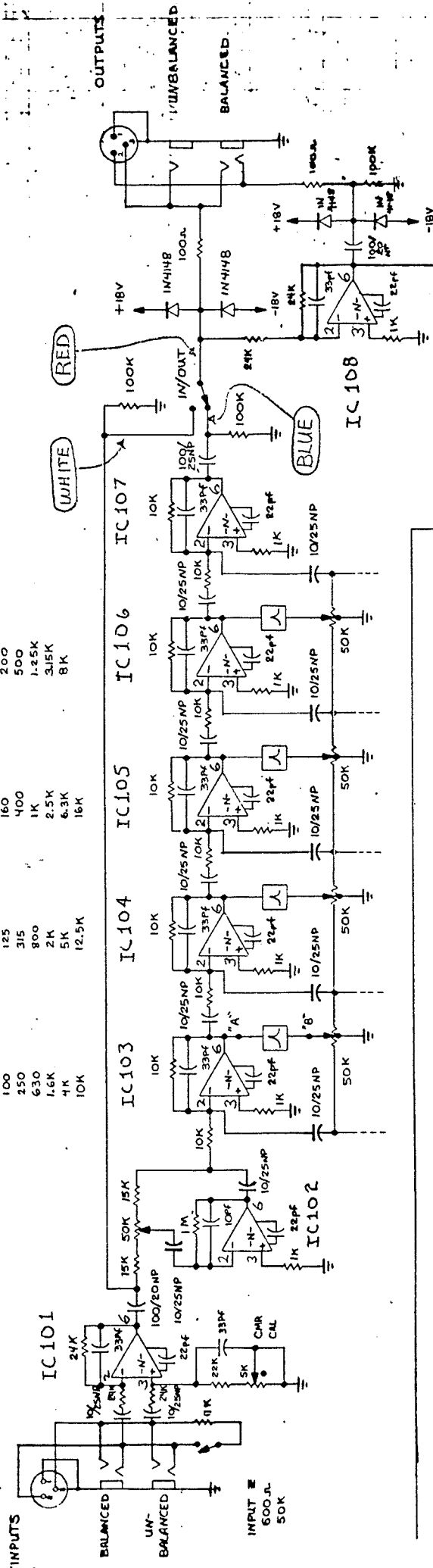
FILTERS

100	80	63	50	40HZ
315	250	200	160	125
1K	800	630	500	400
3.15K	2.5K	2K	1.6K	1.25K
10K	8K	6.3K	5K	4K
			16K	12.5K

BI-AMP EQ/270A
 BLOCK DIAGRAM
 H²

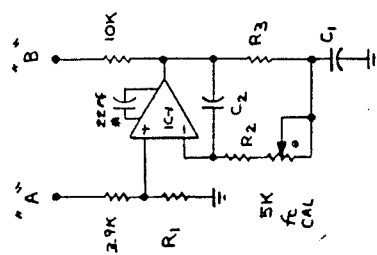
MIXERS

- 1- 40HZ 100 250 630 1.6K 4K 10K
- 2- 50HZ 125 315 800 2.5K 6.3K 12.5K
- 3- 63HZ 160 400 1K 2.5K 6.3K 16K
- 4- 80HZ 200 500 1.25K 3.15K 8K

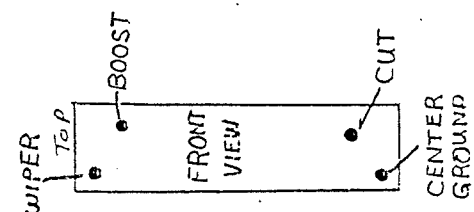


fc	IC-1	R ₁	R ₂	R ₃	C ₁	C ₂	MIXER
40HZ	C455B	390 + 8.0A	6.8KΩ	10KΩ	2.2 + 1.4uf	.047uf + .05	1
50		330 + 18	8.2K		2.2 + .47	.033 + .0033	2
63		270 + 33	6.8K		.022 + .0047		3
80		220 + 39	5.6K		1 + 1	.022 + .0015	4
100		270 + 10	8.2K		1 + .47	.015 + .0022	1
125		220 + 39	6.8K		1 + .22	.01 + .0047	2
160		220 + 27	6.8K		1	.01 + .0015	3
200		270 + 0	10K		.47 + .27	.0068 + 680pf	4
250		220 + 0	4.7K		.47 + .27	.0068 + 680pf	1
315		220 + 55	8.2K		.47 + .047	.0047 + 680pf	2
400		180 + 22	4.7K		.41	.0039 + 0	3
500		220 + 0	4.7K		.27 + .1	.0022 + 0	4
630		220 + 10	6.8K		.27	.0022 + 0	1
800		220 + 10	4.7K		.22	.0022 + 150pf	2
1K		220 + 10	6.8K		.1 + .048	.0015 + 150pf	3
1.25K		180 + 22	6.8K		.1 + .047	.001 + 270pf	4
1.6K		150 + 10	4.7K		.1 + .033	.001 + 0	1
2K		150 + 22	6.8K		.1	.680pf + 0	2
2.5K		220 + 10	1K	2.2K	.27	.0015 + 270pf	3
3.15K		180 + 39	1K		.22	.0015 + 0	4
4K		180 + 10	1K		.1 + .1	.001 + 150pf	1
5K		220 + 27	1K		.1 + .033	.680pf + 150pf	2
6.3K		220 + 27	1K		.1	.470pf + 82pf	3
8K		220 + 27	1K		.082	.470pf + 33pf	4
10K		220 + 27	1K		.048	.270pf + 150pf	1
12.5K		180 + 0	1K		.048 + .0022	.270pf + 82pf	2
16K		150 + 99	1K		.047	.270pf + 0	3

RESISTORS IN SERIES
CAPACITORS IN PARALLEL



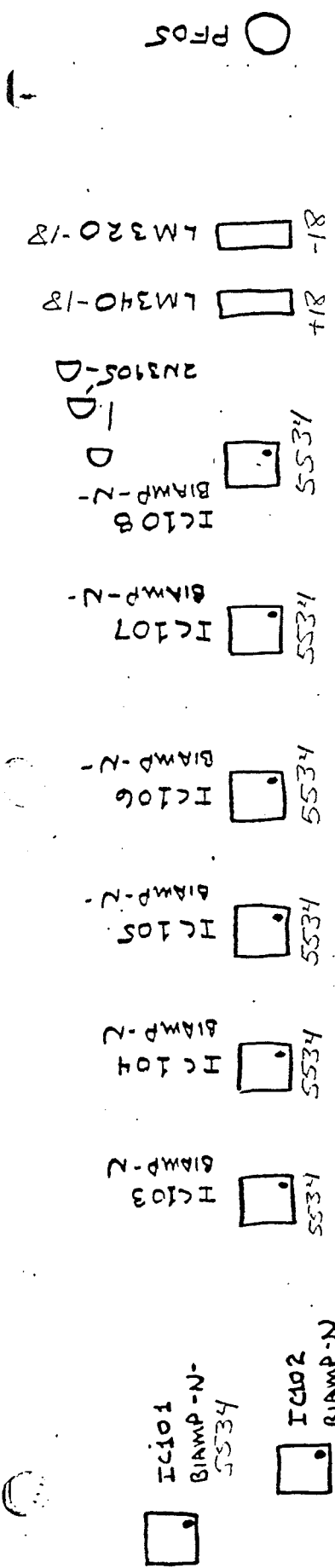
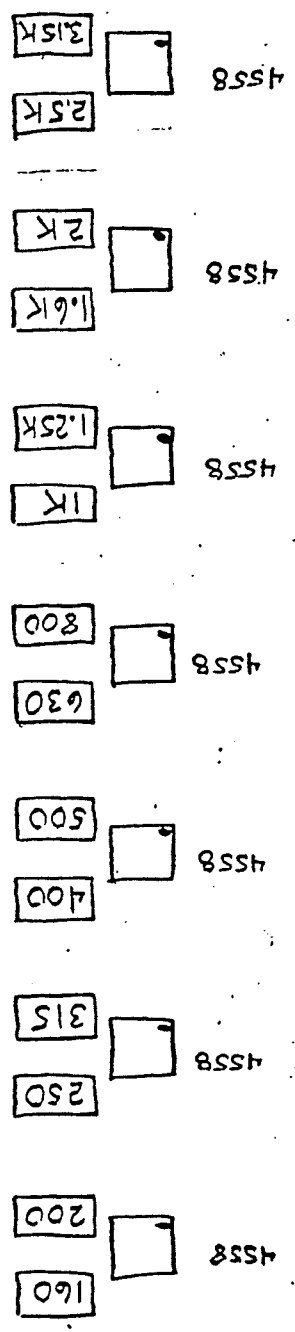
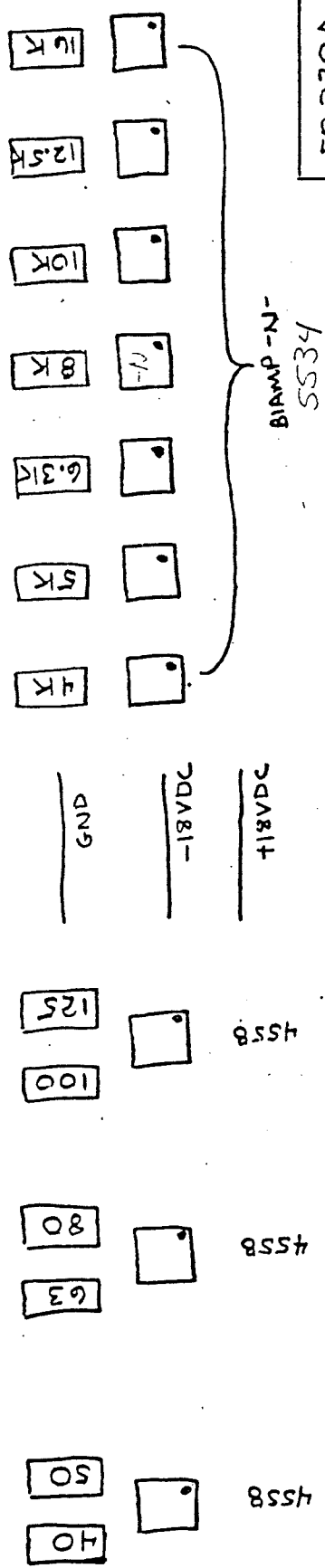
FILTERS



BIAMP EQ/270A

1-17-77
H2

EQ 270A
 LAYOUT DIAGRAM
 JTDUNN
 5-8-80



12-11-78 H²

POWER

