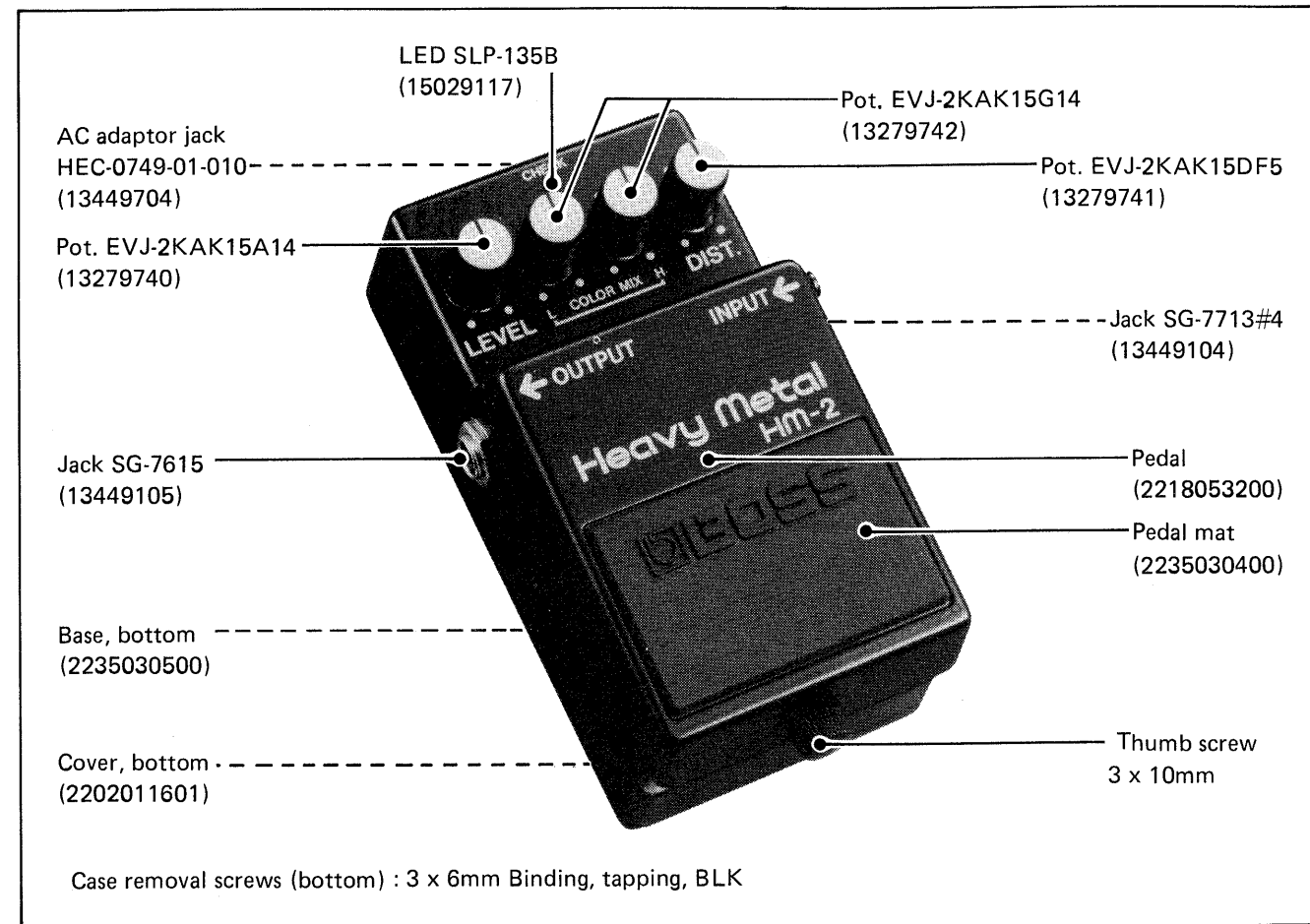


BOSS HM-2 SERVICE NOTES

First Edition

SPECIFICATIONS

Power : 9V DC (battery or AC adaptor)
 Current draw : 10mA @9V
 Input Impedance : 1MΩ
 Dimensions : 70(W) x 55(H) x 125(D) mm
 2-3/4(W) x 2-3/16(H) x 4-15/16(D) in
 Weight : 400g 14 oz.



PARTS LIST

2201016900 Case
 2218053200 Pedal
 2202011601 Cover bottom
 2235030500 Base bottom
 2235030400 Base (pedal mat)
 2215070201 Guide bushing
 2226033300 Cushion
 2216050201 Spacer pcb-bottom cover
 2217010900 Coil spring
 2247025900 Knob
 2341041400 Battery snap

JACK
 13449104 SG-7713#4 input
 13449105 SG-7615 output
 13449704 HEC-0749-01-010 AC adaptor

SWITCH
 13129710 JM-0404 KEY

POTENTIOMETER
 13279740 EVJ-2KAK15A14 LEVEL
 13279742 EVJ-2KAK15G14 COLOR MIX
 13279741 EVJ-2KAK15DF5 DISTORTION

PCB
 7522354001 (pcb 2291085902-1/2) MAIN SN362100-up
 7522351000 (pcb 2291085900-1) MAIN
 7522353000 (pcb 2291085902-2/2) VOLUME SN362100-up
 7522351000 (pcb 2291085900-2) VOLUME

SEMICONDUCTOR
 15189136 M5218L Dual OP amp
 15139101 2SK30A-Y FET
 15129104 2SC732TM-GR Transistor
 15119111 2SA970-GR Transistor
 15129108 2SC945-P Transistor
 15129120 2SC2240-GR Transistor
 15019122 1S188FM Diode
 15019103 1S2473 Diode
 15019209 S5500G Diode
 15029117 SLP135B LED
 15019523 RD5.1EB-3 Zener

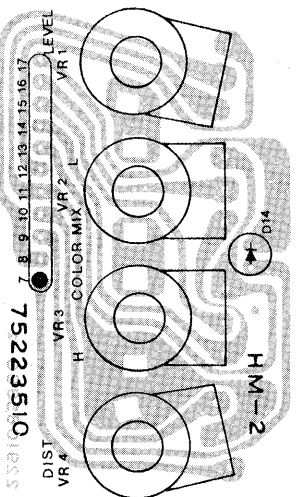
WAVEFORM CHECK

1. Feed the test signal to INPUT of the HM-2.
2. Connect the scope to OUTPUT of the HM-2.
3. Push Pedal once if the LED is unlit (EFFECT OFF).

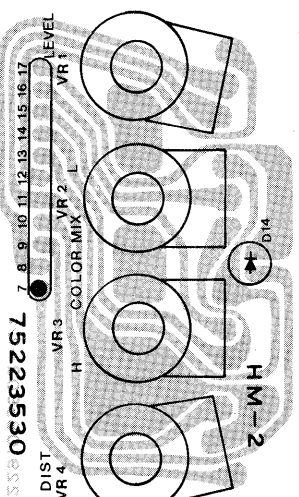
NOTE: The indicator fails to light when the DC is below 6V.
 The amplitudes in the table are taken with accurate 9V source and will vary as voltage fluctuates.

CHECK	INPUT	SET CONTROLS	WAVEFORM & REMARK
1. DISTORTION	200Hz 20mVp-p	LEVEL, COLOR MIX, H, DIST.	500mVp-p
2. COLOR MIX H		LEVEL, COLOR MIX, H, DIST.	2.2Vp-p
3. COLOR MIX L		LEVEL, COLOR MIX, H, DIST.	500mVp-p
		LEVEL, COLOR MIX, H, DIST.	800mVp-p
		LEVEL, COLOR MIX, H, DIST.	500mVp-p
If one or more waveforms seem wrong, proceed to the following steps.			
The unit will show a peak at three frequencies (fL, fH1 and fH2). Check each peak for conformity with specifications.			
4. COLOR MIX L, H	70Hz-1.6kHz -40dBm	LEVEL, COLOR MIX, H, DIST.	fL : 90 ± 10Hz Level : boosted by 21 + 2/- 3dB when L pot travels from the center to FCW. fH1 : 950 ± 50Hz fH2 : 1.3K ± 200Hz Level : boosted by 21 + 2/- 3dB when H pot travels from the center to FCW.
5. GAIN	1kHz -70dBm	LEVEL, COLOR MIX, H, DIST.	-25 ± 1dB -57 ± 2dB

VOLUME BOARD
7522351000
(pcb 2291085900-2)

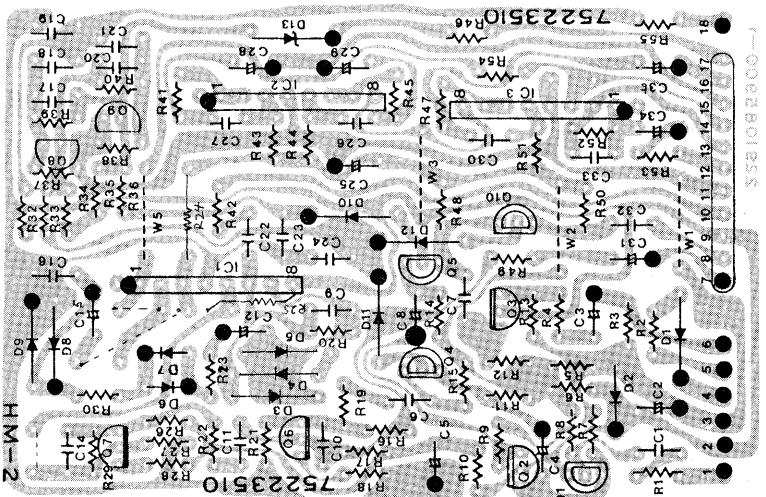


VOLUME BOARD
7522353000
(pcb 2291085902 2/2)

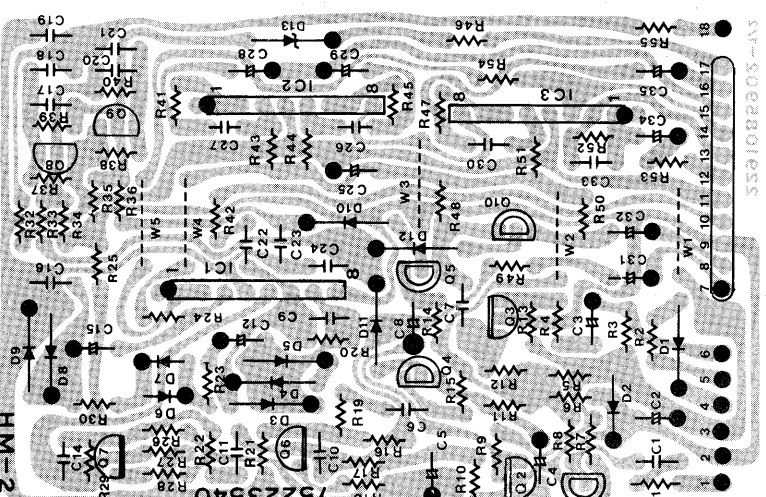


SN 362100-up

MAIN BOARD
7522351000
(pcb 2291085900-1)



MAIN BOARD
7522354001
(pcb 2291085902 1/2)



Although assembly number is skip-
ped, Components remain un-
changed but some parts on MAIN
board are rearranged.

CIRCUIT DIAGRAM

