

**CAUTION**  
THIS SCHEMATIC IS PROVIDED FOR USE BY QUALIFIED PERSONNEL.  
TO AVOID RISK OF ELECTRIC SHOCK, REFER SERVICING TO QUALIFIED  
SERVICE PERSONNEL. DO NOT PERFORM ANY SERVICING BEYOND  
THAT EXPLAINED IN THE OPERATING INSTRUCTIONS.

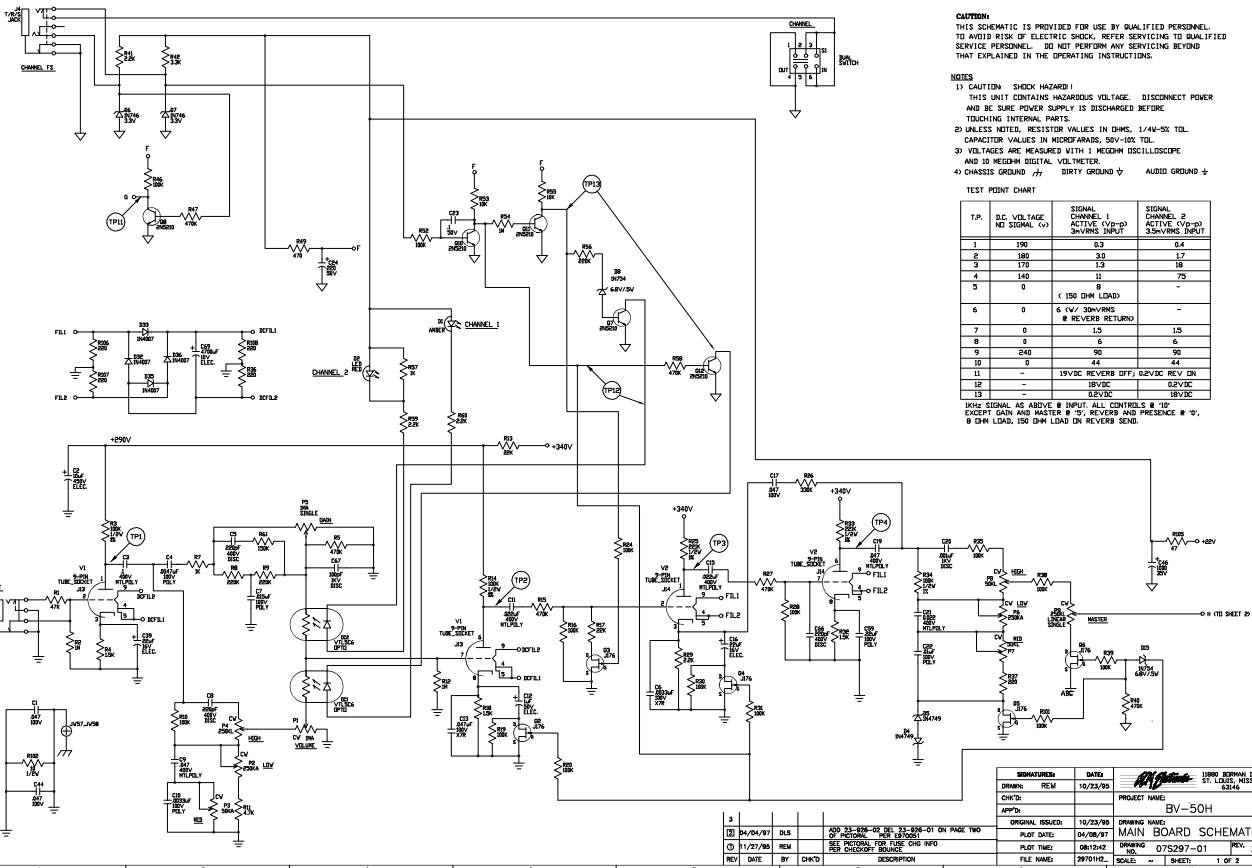
- NOISE**
- 1) CAUTION: SHOCK HAZARD!  
THIS UNIT CONTAINS HAZARDOUS VOLTAGE. DISCONNECT POWER  
AND BE SURE POWER SUPPLY IS DISCHARGED BEFORE  
TOUCHING INTERNAL PARTS.
  - 2) UNLESS NOTED, RESISTOR VALUES IN OHMS, 1/4W-5% TOL.  
CAPACITOR VALUES IN MICROFARADS, 50V-10% TOL.
  - 3) VOLTAGES ARE MEASURED WITH 1 MEGOHM OSCILLOSCOPE  
AND 10 MEGOHM DIGITAL VOLTMETER.
  - 4) CHASSIS GROUND  $\text{///}$  DIRTY GROUND  $\text{◇}$  AUDIO GROUND  $\text{+}$

SEE REVISIONS ON PAGE ONE

REVISIONS	DATE	BY	APP'D
0001	10/23/95	[Signature]	[Signature]
0002	04/08/97	[Signature]	[Signature]

DRAWING NO. 081242  
 PLOT DATE: 08/12/42  
 FILE NAME: 297012

PROJECT NAME: BV-50H  
 DRAWING NAME: MAIN BOARD SCHEMATIC  
 DRAWING NO. 075297-01  
 SCALE: ~ SHEET: 2 OF 2



**CAUTION:**  
THIS SCHEMATIC IS PROVIDED FOR USE BY QUALIFIED PERSONNEL TO AVOID RISK OF ELECTRIC SHOCK. REFER SERVICING TO QUALIFIED SERVICE PERSONNEL. DO NOT PERFORM ANY SERVICING BEYOND THAT EXPLAINED IN THE OPERATING INSTRUCTIONS.

- NOTES**
- 1) CAUTION - CHECK HAZARD! THIS UNIT CONTAINS HAZARDOUS VOLTAGE. DISCONNECT POWER AND BE SURE POWER SUPPLY IS DISCHARGED BEFORE TOUCHING INTERNAL PARTS.
  - 2) UNLESS NOTED, RESISTOR VALUES IN OHMS; 1/4W-50C TOL. CAPACITOR VALUES IN MICROFARADS; 50V-100C TOL.
  - 3) VOLTAGES ARE MEASURED WITH 1 MEGOHM OSCILLOSCOPE AND 10 MEGOHM DIGITAL VOLTMETER.
  - 4) CHASSIS GROUND  $\text{ch}$  DIRTY GROUND  $\text{ch}$  AUDIO GROUND  $\text{ch}$

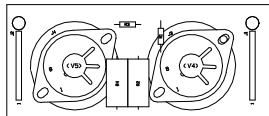
TEST POINT CHART

T.P.	D.C. VOLTAGE NO SIGNAL (V)	SIGNAL CHANNEL 1 ACTIVE (V <sub>p-p</sub> ) 3 $\times$ V <sub>RMS</sub> INPUT	SIGNAL CHANNEL 2 ACTIVE (V <sub>p-p</sub> ) 3 $\times$ V <sub>RMS</sub> INPUT
1	190	0.3	0.4
2	160	3.0	1.7
3	170	1.3	1.8
4	140	1.1	7.5
5	0	0	-
6	0	6 (V <sub>R</sub> /30 $\times$ V <sub>RMS</sub> )	-
7	0	0	1.5
8	0	6	6
9	240	90	90
10	0	44	44
11	-	18V <sub>DC</sub> REVERSE OFF; 0.2V <sub>DC</sub> REV. ON	-
12	-	18V <sub>DC</sub>	0.2V <sub>DC</sub>
13	-	0.2V <sub>DC</sub>	18V <sub>DC</sub>

100 $\mu$  SIGNAL AS ABOVE.  $\text{ch}$  INPUT. ALL CONTROLS @ 10% EXCEPT GAIN AND MASTER @ 0V. REVERSE AND PRESENCE @ 0V. 0 OHM LOAD, 150 OHM LOAD ON REVERSE SEND.

SIGNATURE:	DATE:	1190 BORNAN DR ST. LOUIS, MISSOURI 63144
DRW'n: REM	10/23/70	
CHK'D:		PROJECT NAME: BV-50H
APPROV'D:		
ORIGINAL ISSUED:	10/23/70	DRAWING NAME: MAIN BOARD SCHEMATIC
PLT DATE:	04/06/97	DRAWING NO: 075297-01
PLT TIME:	06:12:42	REV. 2
FILE NAME:	29701H2	SCALE: -- SHEET: 1 OF 2

3	04/04/97	DLB	200-23-006-02 REV. 31-006-01 ON PAGE TWO OF ORIGINAL
1	11/27/88	REM	SET PICTORIAL FOR USE CHG. INFO FOR CHANGE ORDERS
REV	DATE	BY	CH'D



DESIGNATOR PART NUMBER DESCRIPTION

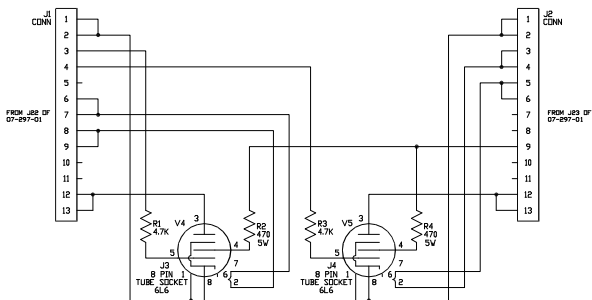
J1	17-101-13	13 PIN CONNECTOR
J2	17-101-13	13 PIN CONNECTOR
J3	17-450-08	8 PIN TUBE SOCKET
J4	17-450-08	8 PIN TUBE SOCKET
R1	76-472-01	4.7K
R2	78-471-05	470 5W
R3	76-472-01	4.7K
R4	78-471-05	470 5W
V4	97-916-02	TESTED 6L6GT TUBES
V5	97-916-02	TESTED 6L6GT TUBES
MISC.		
(1)	D6A296-11	PC BOARD
(8)	30-638-53	SCREW
(4)	85-133-01	HEX STAND-OFF

**CAUTION:**

THIS SCHEMATIC IS PROVIDED FOR USE BY QUALIFIED PERSONNEL. TO AVOID RISK OF ELECTRIC SHOCK, REFER SERVICING TO QUALIFIED SERVICE PERSONNEL. DO NOT PERFORM ANY SERVICING BEYOND THAT EXPLAINED IN THE OPERATING INSTRUCTIONS.

**NOTES**

- 1) CAUTION: SHOCK HAZARD!  
THIS UNIT CONTAINS HAZARDOUS VOLTAGE. DISCONNECT POWER AND BE SURE POWER SUPPLY IS DISCHARGED BEFORE TOUCHING INTERNAL PARTS.
- 2) UNLESS NOTED, RESISTOR VALUES IN OHMS, 1/4W-5% TOL. CAPACITOR VALUES IN MICROFARADS, 50V-10% TOL.
- 3) VOLTAGES ARE MEASURED WITH 1 MEGOHM OSCILLOSCOPE AND 10 MEGOHM DIGITAL VOLTMETER.
- 4) CHASSIS GROUND  $\nabla$  CIRCUIT GROUND  $\nabla$



<b>SIGNATURES:</b>		<b>DATE:</b>	1180 BIRMAN DR. ST. LOUIS, MISSOURI 63146
DRAWN:	REM	11/607/90	PROJECT NAME:
CHK'D:			BV-50H
APP'D:			DRAWING NAME:
ORIGINAL ISSUED:	11/07/98		PICT & SCHEMATIC
PLOT DATE:	11/06/95		DRAWING NO. 07P296-21
PLOT TIME:	02:00:14		REV. 0_
FILE NAME:	29621PO_		SCALE: 1:1
			SHEET: 1 OF 1