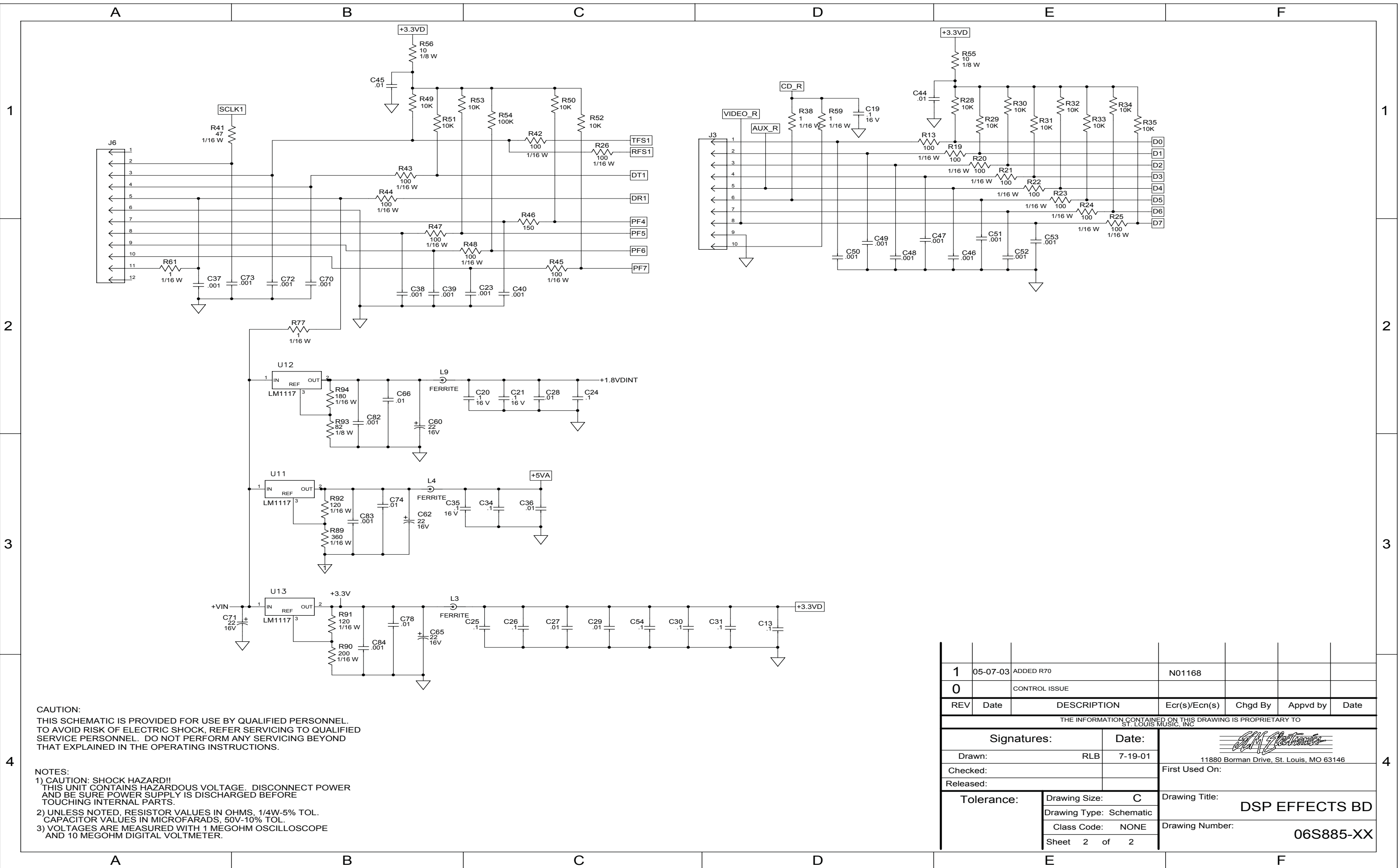


CAUTION:
 THIS SCHEMATIC IS PROVIDED FOR USE BY QUALIFIED PERSONNEL.
 TO AVOID RISK OF ELECTRIC SHOCK, REFER SERVICING TO QUALIFIED
 SERVICE PERSONNEL. DO NOT PERFORM ANY SERVICING BEYOND
 THAT EXPLAINED IN THE OPERATING INSTRUCTIONS.

- NOTES:**
- 1) CAUTION: SHOCK HAZARD!!
 THIS UNIT CONTAINS HAZARDOUS VOLTAGE. DISCONNECT POWER
 AND BE SURE POWER SUPPLY IS DISCHARGED BEFORE
 TOUCHING INTERNAL PARTS.
 - 2) UNLESS NOTED, RESISTOR VALUES IN OHMS, 1/4W-5% TOL.
 CAPACITOR VALUES IN MICROFARADS, 50V-10% TOL.
 - 3) VOLTAGES ARE MEASURED WITH 1 MEGOHM OSCILLOSCOPE
 AND 10 MEGOHM DIGITAL VOLTMETER.

Power Table						
Ref Des	Device(Type)	Package	+3.3V	+3.3VD	+1.8VDINT	D-GND
U1	37S18603_	TQFP100		90,67,36,15	59,18	92,80,71,66,60,41,28, 17,12,3
U4	37S18104_	SOT-23	3			1
U5	37S01101_32PLCC	32PLCC		32		16
U6	37S87202_	SOJ32_3		32		16

1	05-07-03	ADDED R70				N01168
0		CONTROL ISSUE				
REV	Date	DESCRIPTION	Ecr(s)/Ecn(s)	Chgd By	Appvd by	Date
THE INFORMATION CONTAINED ON THIS DRAWING IS PROPRIETARY TO ST. LOUIS MUSIC, INC.						
Signatures:			Date:			
Drawn: RLB		7-19-01		11880 Borman Drive, St. Louis, MO 63146		
Checked:			First Used On:			
Released:			Drawing Title: DSP EFFECTS BD			
Tolerance:		Drawing Size: C		Drawing Number: 06S885-XX		
		Drawing Type: Schematic				
		Class Code: NONE				
		Sheet 1 of 2				



CAUTION:
 THIS SCHEMATIC IS PROVIDED FOR USE BY QUALIFIED PERSONNEL. TO AVOID RISK OF ELECTRIC SHOCK, REFER SERVICING TO QUALIFIED SERVICE PERSONNEL. DO NOT PERFORM ANY SERVICING BEYOND THAT EXPLAINED IN THE OPERATING INSTRUCTIONS.

- NOTES:**
- 1) CAUTION: SHOCK HAZARD!! THIS UNIT CONTAINS HAZARDOUS VOLTAGE. DISCONNECT POWER AND BE SURE POWER SUPPLY IS DISCHARGED BEFORE TOUCHING INTERNAL PARTS.
 - 2) UNLESS NOTED, RESISTOR VALUES IN OHMS, 1/4W-5% TOL. CAPACITOR VALUES IN MICROFARADS, 50V-10% TOL.
 - 3) VOLTAGES ARE MEASURED WITH 1 MEGOHM OSCILLOSCOPE AND 10 MEGOHM DIGITAL VOLTMETER.

1	05-07-03	ADDED R70					N01168
0		CONTROL ISSUE					
REV	Date	DESCRIPTION	Ecr(s)/Ecn(s)	Chgd By	Appvd by	Date	
THE INFORMATION CONTAINED ON THIS DRAWING IS PROPRIETARY TO ST. LOUIS MUSIC, INC.							
Signatures:				Date:		 11880 Borman Drive, St. Louis, MO 63146	
Drawn: RLB		7-19-01		First Used On:			
Checked:				Drawing Title:		DSP EFFECTS BD	
Released:				Drawing Number:		06S885-XX	
Tolerance:		Drawing Size: C		Class Code: NONE		Sheet 2 of 2	