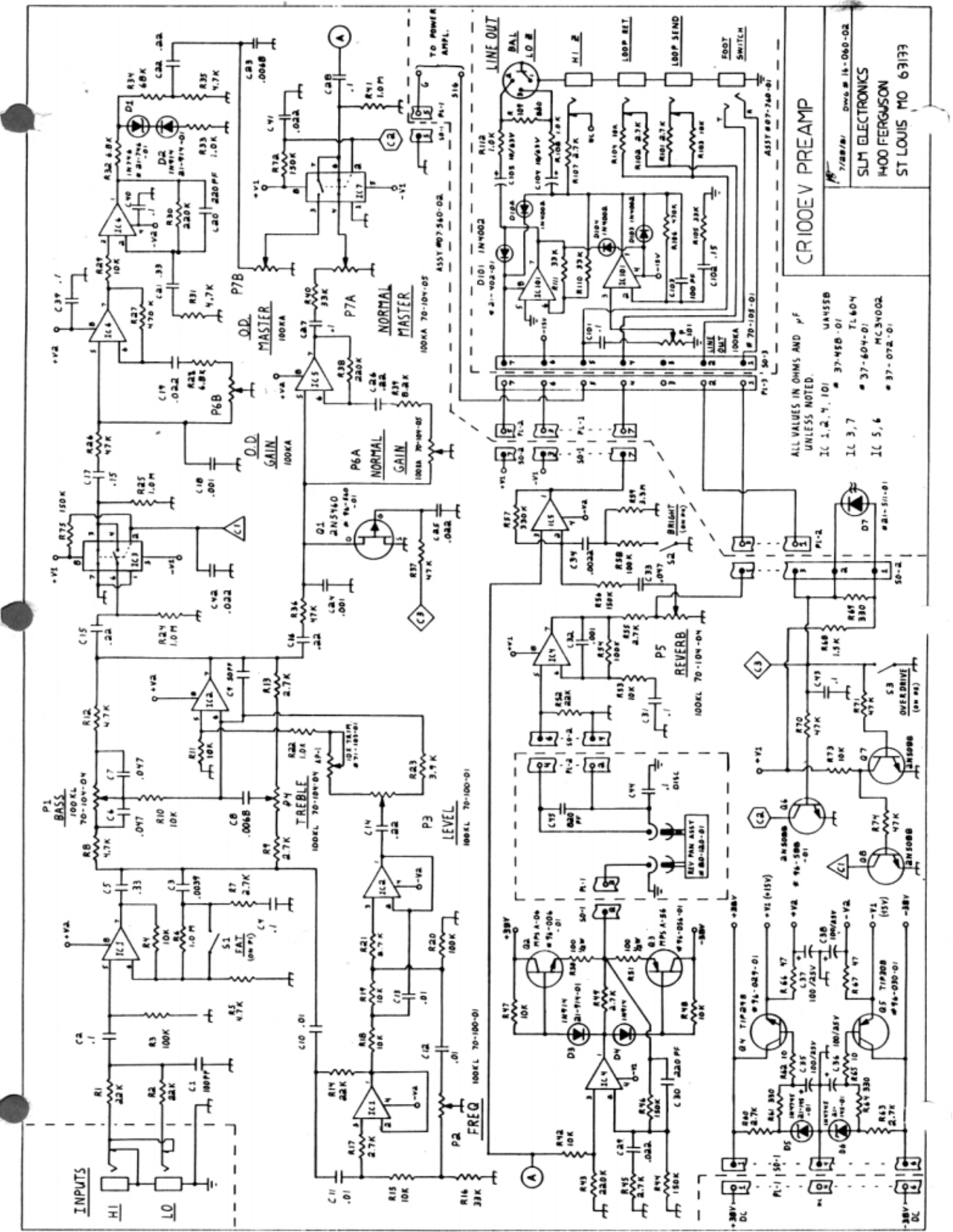




CRATE CONDOR SERIES

Model CR-100EV

90 watts RMS, 12" Electro Voice Speaker



CR100EV PREAMP

ALL VALUES IN OHMS AND pF UNLESS NOTED.
 IC 1, 2, 4, 101 MCV55B
 IC 3, 7 37-95B-01
 IC 5, 6 37-604-01
 MC34002
 37-072-01

Q1 2N5140
 Q2 2N5140
 Q3 2N5140
 Q4 2N5140
 Q5 2N5140
 Q6 2N5140
 Q7 2N5140
 Q8 2N5140
 Q9 2N5140
 Q10 2N5140
 Q11 2N5140
 Q12 2N5140
 Q13 2N5140
 Q14 2N5140
 Q15 2N5140
 Q16 2N5140
 Q17 2N5140
 Q18 2N5140
 Q19 2N5140
 Q20 2N5140
 Q21 2N5140
 Q22 2N5140
 Q23 2N5140
 Q24 2N5140
 Q25 2N5140
 Q26 2N5140
 Q27 2N5140
 Q28 2N5140
 Q29 2N5140
 Q30 2N5140
 Q31 2N5140
 Q32 2N5140
 Q33 2N5140
 Q34 2N5140
 Q35 2N5140
 Q36 2N5140
 Q37 2N5140
 Q38 2N5140
 Q39 2N5140
 Q40 2N5140
 Q41 2N5140
 Q42 2N5140
 Q43 2N5140
 Q44 2N5140
 Q45 2N5140
 Q46 2N5140
 Q47 2N5140
 Q48 2N5140
 Q49 2N5140
 Q50 2N5140
 Q51 2N5140
 Q52 2N5140
 Q53 2N5140
 Q54 2N5140
 Q55 2N5140
 Q56 2N5140
 Q57 2N5140
 Q58 2N5140
 Q59 2N5140
 Q60 2N5140
 Q61 2N5140
 Q62 2N5140
 Q63 2N5140
 Q64 2N5140
 Q65 2N5140
 Q66 2N5140
 Q67 2N5140
 Q68 2N5140
 Q69 2N5140
 Q70 2N5140
 Q71 2N5140
 Q72 2N5140
 Q73 2N5140
 Q74 2N5140
 Q75 2N5140
 Q76 2N5140
 Q77 2N5140
 Q78 2N5140
 Q79 2N5140
 Q80 2N5140
 Q81 2N5140
 Q82 2N5140
 Q83 2N5140
 Q84 2N5140
 Q85 2N5140
 Q86 2N5140
 Q87 2N5140
 Q88 2N5140
 Q89 2N5140
 Q90 2N5140
 Q91 2N5140
 Q92 2N5140
 Q93 2N5140
 Q94 2N5140
 Q95 2N5140
 Q96 2N5140
 Q97 2N5140
 Q98 2N5140
 Q99 2N5140
 Q100 2N5140

D101 IN4002
 D102 IN4002
 D103 IN4002
 D104 IN4002
 D105 IN4002
 D106 IN4002
 D107 IN4002
 D108 IN4002
 D109 IN4002
 D110 IN4002
 D111 IN4002
 D112 IN4002
 D113 IN4002
 D114 IN4002
 D115 IN4002
 D116 IN4002
 D117 IN4002
 D118 IN4002
 D119 IN4002
 D120 IN4002
 D121 IN4002
 D122 IN4002
 D123 IN4002
 D124 IN4002
 D125 IN4002
 D126 IN4002
 D127 IN4002
 D128 IN4002
 D129 IN4002
 D130 IN4002
 D131 IN4002
 D132 IN4002
 D133 IN4002
 D134 IN4002
 D135 IN4002
 D136 IN4002
 D137 IN4002
 D138 IN4002
 D139 IN4002
 D140 IN4002
 D141 IN4002
 D142 IN4002
 D143 IN4002
 D144 IN4002
 D145 IN4002
 D146 IN4002
 D147 IN4002
 D148 IN4002
 D149 IN4002
 D150 IN4002

ASSY M07540-02
 ASSY M07540-01
 ASSY M07540-03
 ASSY M07540-04
 ASSY M07540-05
 ASSY M07540-06
 ASSY M07540-07
 ASSY M07540-08
 ASSY M07540-09
 ASSY M07540-10
 ASSY M07540-11
 ASSY M07540-12
 ASSY M07540-13
 ASSY M07540-14
 ASSY M07540-15
 ASSY M07540-16
 ASSY M07540-17
 ASSY M07540-18
 ASSY M07540-19
 ASSY M07540-20
 ASSY M07540-21
 ASSY M07540-22
 ASSY M07540-23
 ASSY M07540-24
 ASSY M07540-25
 ASSY M07540-26
 ASSY M07540-27
 ASSY M07540-28
 ASSY M07540-29
 ASSY M07540-30
 ASSY M07540-31
 ASSY M07540-32
 ASSY M07540-33
 ASSY M07540-34
 ASSY M07540-35
 ASSY M07540-36
 ASSY M07540-37
 ASSY M07540-38
 ASSY M07540-39
 ASSY M07540-40
 ASSY M07540-41
 ASSY M07540-42
 ASSY M07540-43
 ASSY M07540-44
 ASSY M07540-45
 ASSY M07540-46
 ASSY M07540-47
 ASSY M07540-48
 ASSY M07540-49
 ASSY M07540-50

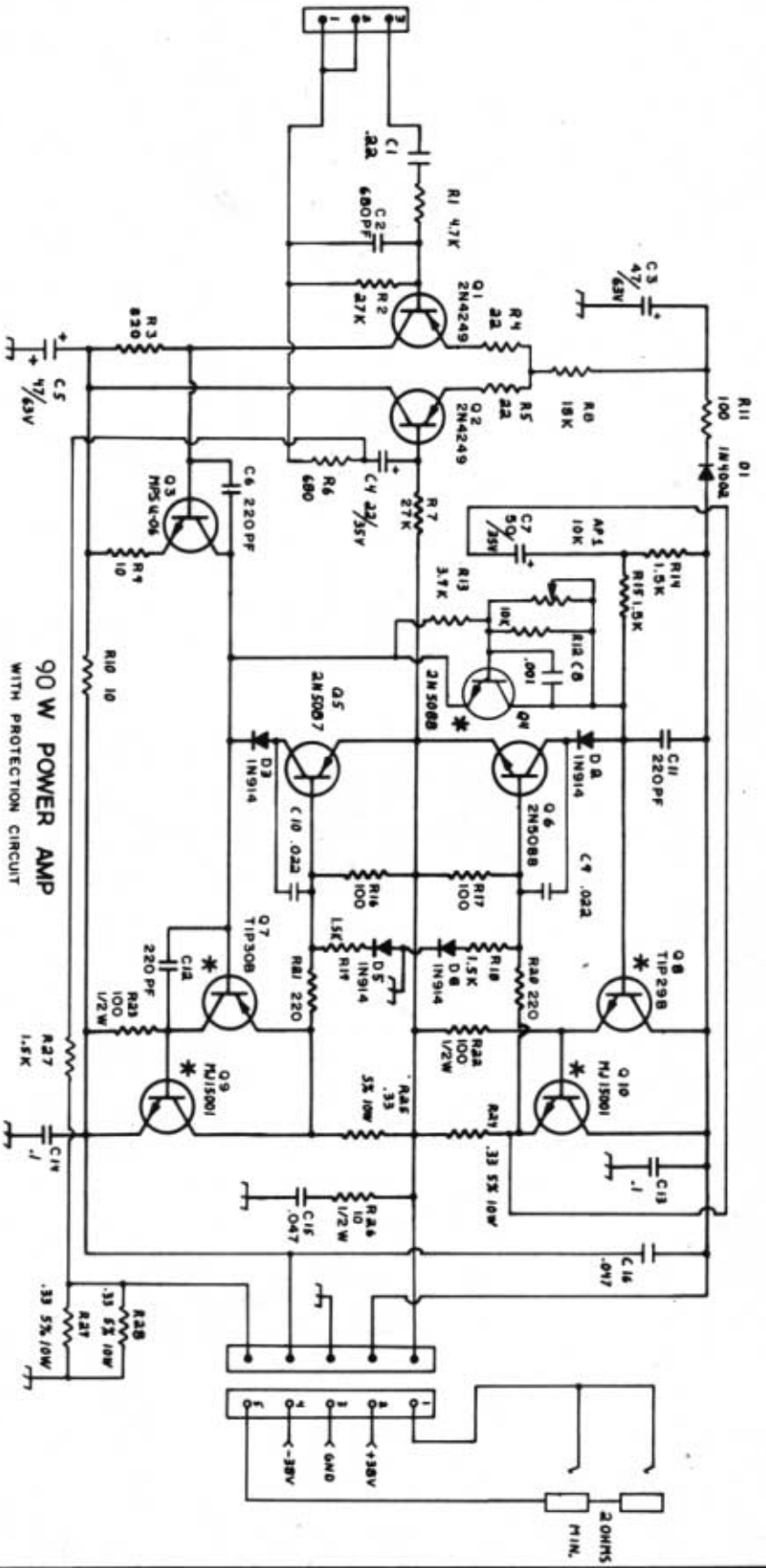
ASSY M07540-51
 ASSY M07540-52
 ASSY M07540-53
 ASSY M07540-54
 ASSY M07540-55
 ASSY M07540-56
 ASSY M07540-57
 ASSY M07540-58
 ASSY M07540-59
 ASSY M07540-60
 ASSY M07540-61
 ASSY M07540-62
 ASSY M07540-63
 ASSY M07540-64
 ASSY M07540-65
 ASSY M07540-66
 ASSY M07540-67
 ASSY M07540-68
 ASSY M07540-69
 ASSY M07540-70
 ASSY M07540-71
 ASSY M07540-72
 ASSY M07540-73
 ASSY M07540-74
 ASSY M07540-75
 ASSY M07540-76
 ASSY M07540-77
 ASSY M07540-78
 ASSY M07540-79
 ASSY M07540-80
 ASSY M07540-81
 ASSY M07540-82
 ASSY M07540-83
 ASSY M07540-84
 ASSY M07540-85
 ASSY M07540-86
 ASSY M07540-87
 ASSY M07540-88
 ASSY M07540-89
 ASSY M07540-90
 ASSY M07540-91
 ASSY M07540-92
 ASSY M07540-93
 ASSY M07540-94
 ASSY M07540-95
 ASSY M07540-96
 ASSY M07540-97
 ASSY M07540-98
 ASSY M07540-99
 ASSY M07540-100

ASSY M07540-101
 ASSY M07540-102
 ASSY M07540-103
 ASSY M07540-104
 ASSY M07540-105
 ASSY M07540-106
 ASSY M07540-107
 ASSY M07540-108
 ASSY M07540-109
 ASSY M07540-110
 ASSY M07540-111
 ASSY M07540-112
 ASSY M07540-113
 ASSY M07540-114
 ASSY M07540-115
 ASSY M07540-116
 ASSY M07540-117
 ASSY M07540-118
 ASSY M07540-119
 ASSY M07540-120
 ASSY M07540-121
 ASSY M07540-122
 ASSY M07540-123
 ASSY M07540-124
 ASSY M07540-125
 ASSY M07540-126
 ASSY M07540-127
 ASSY M07540-128
 ASSY M07540-129
 ASSY M07540-130
 ASSY M07540-131
 ASSY M07540-132
 ASSY M07540-133
 ASSY M07540-134
 ASSY M07540-135
 ASSY M07540-136
 ASSY M07540-137
 ASSY M07540-138
 ASSY M07540-139
 ASSY M07540-140
 ASSY M07540-141
 ASSY M07540-142
 ASSY M07540-143
 ASSY M07540-144
 ASSY M07540-145
 ASSY M07540-146
 ASSY M07540-147
 ASSY M07540-148
 ASSY M07540-149
 ASSY M07540-150

ASSY M07540-151
 ASSY M07540-152
 ASSY M07540-153
 ASSY M07540-154
 ASSY M07540-155
 ASSY M07540-156
 ASSY M07540-157
 ASSY M07540-158
 ASSY M07540-159
 ASSY M07540-160
 ASSY M07540-161
 ASSY M07540-162
 ASSY M07540-163
 ASSY M07540-164
 ASSY M07540-165
 ASSY M07540-166
 ASSY M07540-167
 ASSY M07540-168
 ASSY M07540-169
 ASSY M07540-170
 ASSY M07540-171
 ASSY M07540-172
 ASSY M07540-173
 ASSY M07540-174
 ASSY M07540-175
 ASSY M07540-176
 ASSY M07540-177
 ASSY M07540-178
 ASSY M07540-179
 ASSY M07540-180
 ASSY M07540-181
 ASSY M07540-182
 ASSY M07540-183
 ASSY M07540-184
 ASSY M07540-185
 ASSY M07540-186
 ASSY M07540-187
 ASSY M07540-188
 ASSY M07540-189
 ASSY M07540-190
 ASSY M07540-191
 ASSY M07540-192
 ASSY M07540-193
 ASSY M07540-194
 ASSY M07540-195
 ASSY M07540-196
 ASSY M07540-197
 ASSY M07540-198
 ASSY M07540-199
 ASSY M07540-200

ASSY M07540-201
 ASSY M07540-202
 ASSY M07540-203
 ASSY M07540-204
 ASSY M07540-205
 ASSY M07540-206
 ASSY M07540-207
 ASSY M07540-208
 ASSY M07540-209
 ASSY M07540-210
 ASSY M07540-211
 ASSY M07540-212
 ASSY M07540-213
 ASSY M07540-214
 ASSY M07540-215
 ASSY M07540-216
 ASSY M07540-217
 ASSY M07540-218
 ASSY M07540-219
 ASSY M07540-220
 ASSY M07540-221
 ASSY M07540-222
 ASSY M07540-223
 ASSY M07540-224
 ASSY M07540-225
 ASSY M07540-226
 ASSY M07540-227
 ASSY M07540-228
 ASSY M07540-229
 ASSY M07540-230
 ASSY M07540-231
 ASSY M07540-232
 ASSY M07540-233
 ASSY M07540-234
 ASSY M07540-235
 ASSY M07540-236
 ASSY M07540-237
 ASSY M07540-238
 ASSY M07540-239
 ASSY M07540-240
 ASSY M07540-241
 ASSY M07540-242
 ASSY M07540-243
 ASSY M07540-244
 ASSY M07540-245
 ASSY M07540-246
 ASSY M07540-247
 ASSY M07540-248
 ASSY M07540-249
 ASSY M07540-250

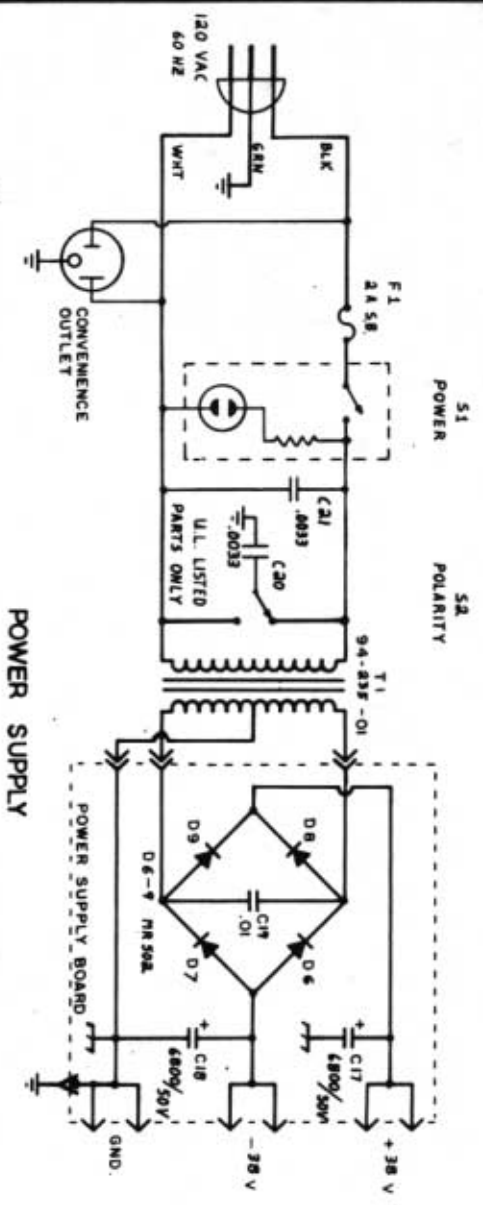
SLM ELECTRONICS
 1400 FERGUSON
 ST LOUIS MO 63133



90 W POWER AMP
WITH PROTECTION CIRCUIT

NOTES: Set bias with P-1 for 1.5 mv DC across R-24. No input, no load, cold. ZN4249 is replaced by 2N5087

* DEVICES MOUNTED ON HEAT SINK



POWER SUPPLY

CR-100EV
POWER AMP & POWER SUPPLY

DATE: 7/28/61

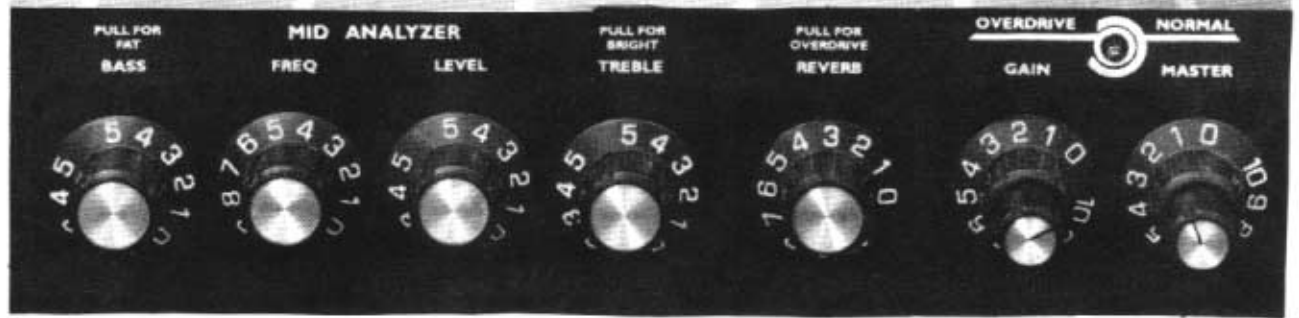
SLM ELECTRONICS
1400 FERGUSON
ST. LOUIS, MO. 63133

POWER 11-040-02



CR-60T

CR-60



CRATE

CONDOR

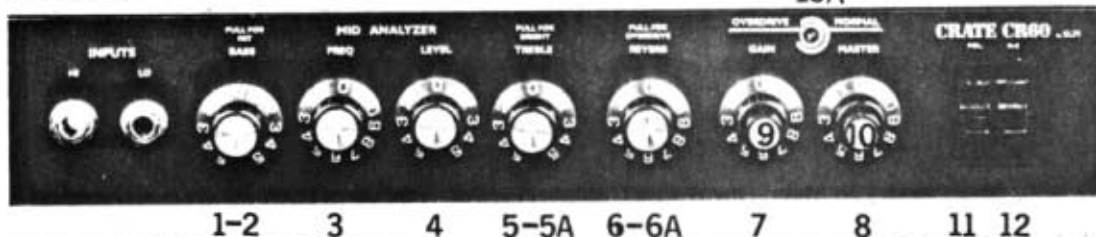
SERIES

Model CR-60

OPERATION and MAINTENANCE

Front Panel

10A



INPUTS:

A) HI GAIN (HI)

This input is to be used with most guitars.

B) LOW GAIN (LO)

If unwanted distortion is present, this may be remedied by using the lo input. the gain of the amp will be reduced by 6DB

EQUALIZATION:

1) BASS

The desired amount of bass or bottom may be increased or decreased with this control.

2) Fat switch (Pull bass control)

Hi mids are boosted when this switch is pulled. This will add punch or fullness to the sound.

3) FREQ

This controls selects the frequencies that the mid level (4) control will control. "0" being lower mids and "10" being high mids.

4) LEVEL

This control will boost or cut the mid frequencies selected by the FREQ (3) control.

5) TREBLE

This control boosts and cuts the treble or upper harmonics of the guitar adding more bite or crispness to the sound.

5A) BRITE (PULL TREBLE)

This switch when pulled will give an extra boost to the treble or hi harmonics of the guitar.

6) REVERB

This control allows the player to alter the apparent musical qualities of a sound. From a very dry affect at "0", to that of a concert hall at "10".

6A) OVERDRIVE SWITCH (PULL REVERB)

This switch when pulled manually selects the overdrive channel and it's related controls. When using the remote footswitch this switch must be in the in or off position for proper footswitch operation.

NORM OR CLEAN CHANNEL:

NOTE: The gain and master (7&8) will only operate when the o.d. switch (6A) or the foot pedal are in the off position.

7) GAIN (OUTER KNOB)

This control controls the amount of gain of the clean or normal channel. When using a hot guitar use smaller amounts, and larger amounts with weaker guitars.

8) MASTER (OUTER KNOB)

This control is the final volume control, and controls the amount of preamp signal being applied to the power amp.

OVERDRIVE CHANNEL

NOTE: the O.D. gain and master controls (9&10) will only operate when the O.D. switch (6A) or the Footswitch are in the on position.

9) GAIN (INNER KNOB)

This controls the amount of gain of the overdrive channel. By increasing this control the amount of distortion and sustain is increased with "0" being minimum and "10" being maximum.

10) MASTER (INNER KNOB)

This is the final volume controlling the amount of O.D. signal being applied to the power amp.

10A) O.D. Led

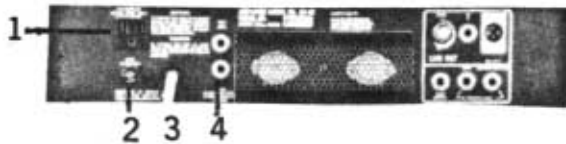
This led illuminates when the overdrive channel is in operation.

11) POLARITY

This switch reverses the polarity of the AC line. If hum or buzz is noticed in certain locations, flipping this switch may correct the problem.

12) AC (POWER)

This switch turns the unit on in the down position. This switch will also illuminate when the amp is on.



REAR PANEL

1) AC OUTLET

This outlet supplies additional power needs for external effects or amps. Be sure not to overload this outlet.

2) FUSE HOLDER

This is the safety valve of the amplifier. Should a problem occur, replace the fuse with same type. If problems persist, consult a repair station.

NOTE: Do not replace fuse with one of higher rating or bypass it in any way as fire and/or damage to the amp could occur.
NOTE: The AC light will not light when the fuse is blown.

3) AC CORD

Make sure this cord is plugged into a safely wired and grounded outlet.

ADDITIONAL INPUTS AND OUTPUTS.

4) SPEAKER JACKS

These jacks supply 60W RMS into 4 ohms. These jacks are in parallel and either jack may be used. However the amp should never be connected to less than 2 ohms total load.

5) LINE OUT LEVEL

This control controls the signal level appearing at the line out jacks (6&7)

6) HI Z LINE OUT

This jack supplies a high impedance buffered line level signal. This signal can be used for running external power amps or supplying signal to a PA or recording mixer.

7) BALANCED LO Z

This jack supplies a low impedance balanced line level signal. This line out can be used for any power amp or mixer requiring a low impedance balanced input.

(Mixer inputs with phantom power are safe to be connected to this jack.)
NOTE: Both these line out jacks (6&7) can supply a relatively larger signal than the preamp output being supplied to the power amp with the line out level (5) full. This enables you to supply a sufficient mixer signal with small speaker levels.

NOTE: Both of these jacks are equalized to simulate a speaker's rolloff characteristics thereby eliminating the need for miking.

8) FOOT SWITCH

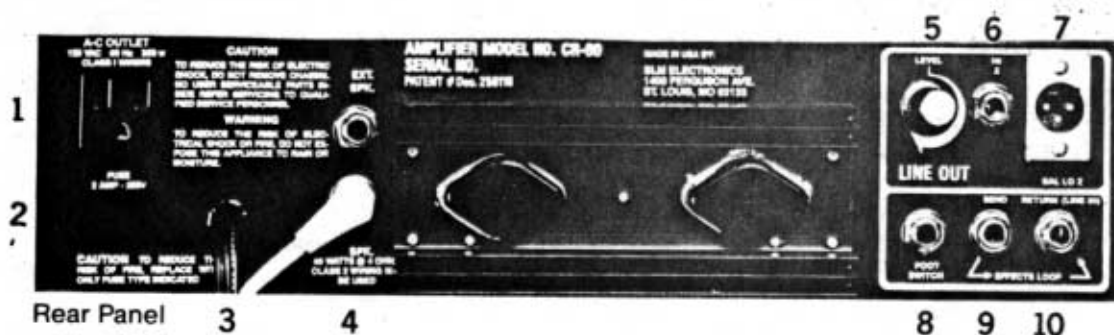
This jack is for connecting the dual foot pedal. Channel switching and reverb on/off are accomplished through this jack

9) EFFECTS SEND

This jack supplies a preamp output signal for connecting to external effects or amps.

10) EFFECTS RETURN (LINE IN)

This jack provides an input to power amp and can be used for an effects return or stacking the amp with another preamp.
NOTE: When both of these jacks are used simultaneously, the preamp is disconnected from the power amp and no sound will result unless an external effect is used. (Preamp output is sent to effects input and effects output is returned to power amp input which reconnects the preamp to the power amp through the effect.)



Rear Panel

REAR PANEL

1)AC OUTLET

This outlet supplies additional power needs for external effects or amps. Be sure not to overload this outlet.

2)FUSE HOLDER

This is the safety valve of the amplifier. Should a problem occur, replace the fuse with same type. If problems persist, consult a repair station.

NOTE: Do not replace fuse with one of higher rating or bypass it in any way as fire and/or damage to the amp could occur.

NOTE: The AC light will not light when the fuse is blown.

3)AC CORD

Make sure this cord is plugged into a safely wired and grounded outlet.

ADDITIONAL INPUTS AND OUTPUTS.

4)SPEAKER JACKS

These jacks supply 8 ohms RMS into 8 ohms. These jacks are in parallel and either jack may be used. However the amp should never be connected to less than 2 ohms load.

5)LINE OUT LEVEL

This control controls the signal level appearing at the line out jacks (6&7)

6)HI Z LINE OUT

This jack supplies a high impedance buffered line level signal. This signal can be used for running external power amps or supplying signal to a PA or recording mixer.

7)BALANCED LO Z

This jack supplies a low impedance balanced line level signal. This line out can be used for any power amp or mixer requiring a low impedance balanced input. (Mixer inputs with phantom power are safe to be connected to this jack.)

NOTE: Both these line out jacks (6&7) can supply a relatively larger signal than the preamp output being supplied to the power amp with the line out level (5) full. This enables you to supply a sufficient mixer signal with small speaker levels.

NOTE: Both of these jacks are equalized to simulate a speaker's rolloff characteristics thereby eliminating the need for miking.

8)FOOT SWITCH

This jack is for connecting the dual foot pedal. Channel switching and reverb on/off are accomplished through this jack

9)EFFECTS SEND

This jack supplies a preamp output signal for connecting to external effects or amps.

10)EFFECTS RETURN (LINE IN)

This jack provides an input to power amp and can be used for an effects return or staging the amp with another preamp. **NOTE:** When both of these jacks are used simultaneously, the preamp is disconnected from the power amp and no sound will result unless an external effect is used. (Preamp output is sent to effects input and effects output is returned to power amp input which reconnects the preamp to the power amp thru the effect.)