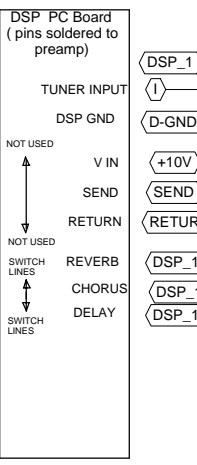


Power Table		
RefDes	-16V	+16V
IC1	4	8
IC2	4	8
IC3	4	8
IC4	4	8
IC5	4	8



Note Table

- CONDITION "A" : SOLO CHANNEL
GAIN & LEVEL @ '10', SHAPE @ '5'.
1kHz 130mV SINE WAVE INPUT
- CONDITION "B" : OVERDRIVE CHANNEL
GAIN & LEVEL @ '10', LOW, MID & HIGH @ '5'.
1kHz 130mV SINE WAVE INPUT
- CONDITION "C" : CLEAN CHANNEL
VOLUME @ 10, LOW, MID, HIGH @ 5.
1kHz 130mV SINE WAVE INPUT

* FOR TEST POINT 9, PUT A 150 OHM RESISTOR FROM J6 TO J7.

TP	CONDITION "A"	CONDITION "B"	CONDITION "C"
1	~.48Vpp	~.48Vpp	~.48Vpp
2	~18Vpp	~5.2Vpp	~5.2Vpp
3	~7.2Vpp	~6.2Vpp	~.18Vpp
4	~5Vpp	~5.2Vpp	---
5	~9.8Vpp	~8Vpp	---
6	~3.3Vpp	~3.2Vpp	~3.6Vpp
7	~9.8Vpp	~5Vpp	~3Vpp
8	~4.8Vpp	~2.5Vpp	~1.5Vpp
9*	~30Vpp	~30Vpp	~30Vpp

CAUTION:
THIS SCHEMATIC IS PROVIDED FOR USE BY QUALIFIED PERSONNEL TO AVOID RISK OF ELECTRIC SHOCK. REFER SERVICING TO QUALIFIED SERVICE PERSONNEL. DO NOT PERFORM ANY SERVICING BEYOND THAT EXPLAINED IN THE OPERATING INSTRUCTIONS.

NOTES:
1) CAUTION: SHOCK HAZARD!! THIS UNIT CONTAINS HAZARDOUS VOLTAGE. DISCONNECT POWER AND BE SURE POWER SUPPLY IS DISCHARGED BEFORE TOUCHING INTERNAL PARTS.
2) UNLESS NOTED, RESISTOR VALUES IN OHMS, 1/4W-5% TOL. CAPACITOR VALUES IN MICROFARADS, 50V-10% TOL.
3) VOLTAGES ARE MEASURED WITH 1 MEGOHM OSCILLOSCOPE AND 10 MEGOHM DIGITAL VOLTMETER.

REV	Date	DESCRIPTION	Ecr(s)/Ecn(s)	Chgd By	Appvd by	Date
F	12/13/06	ADD -05 ASSY	R01971	WFB		
E	07/14/06	-01 ASSY TO -03, -02 ASSY TO -04	R01961	WFB		
D	05/26/06	ADD CKT, CHG VALUES	R01940			

THE INFORMATION CONTAINED ON THIS DRAWING IS PROPRIETARY TO ST. LOUIS MUSIC, INC.

Signatures:	Date:
Drawn: REM	09/06/05
Checked:	
Released:	
Plot Date: Wed Dec 13, 2006	Drawing Size: C
Plot Time: 08:51:07	Drawing Type: Schematic
Tolerance:	Class Code: NONE
	Sheet 1 of 2

11880 Borman Drive, St. Louis, MO 63146

First Used On:

Drawing Title: **PWA - DSP GUITAR AMP**

Drawing Number: **07S181**

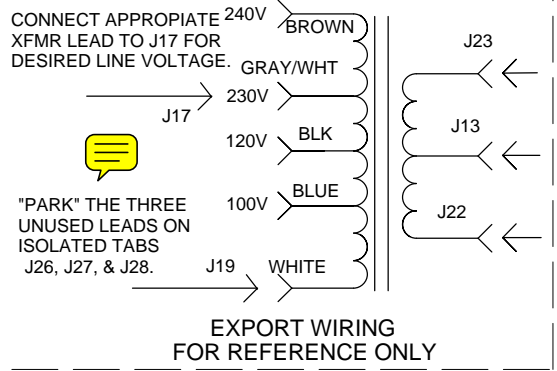
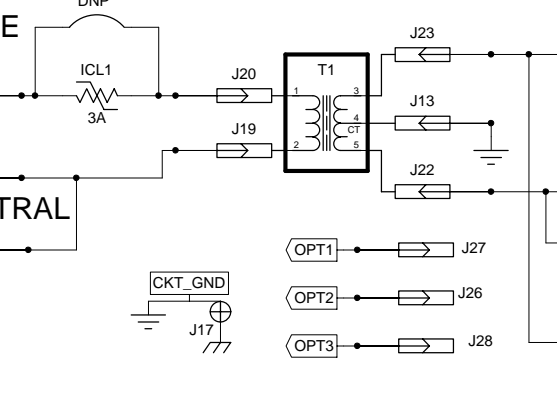
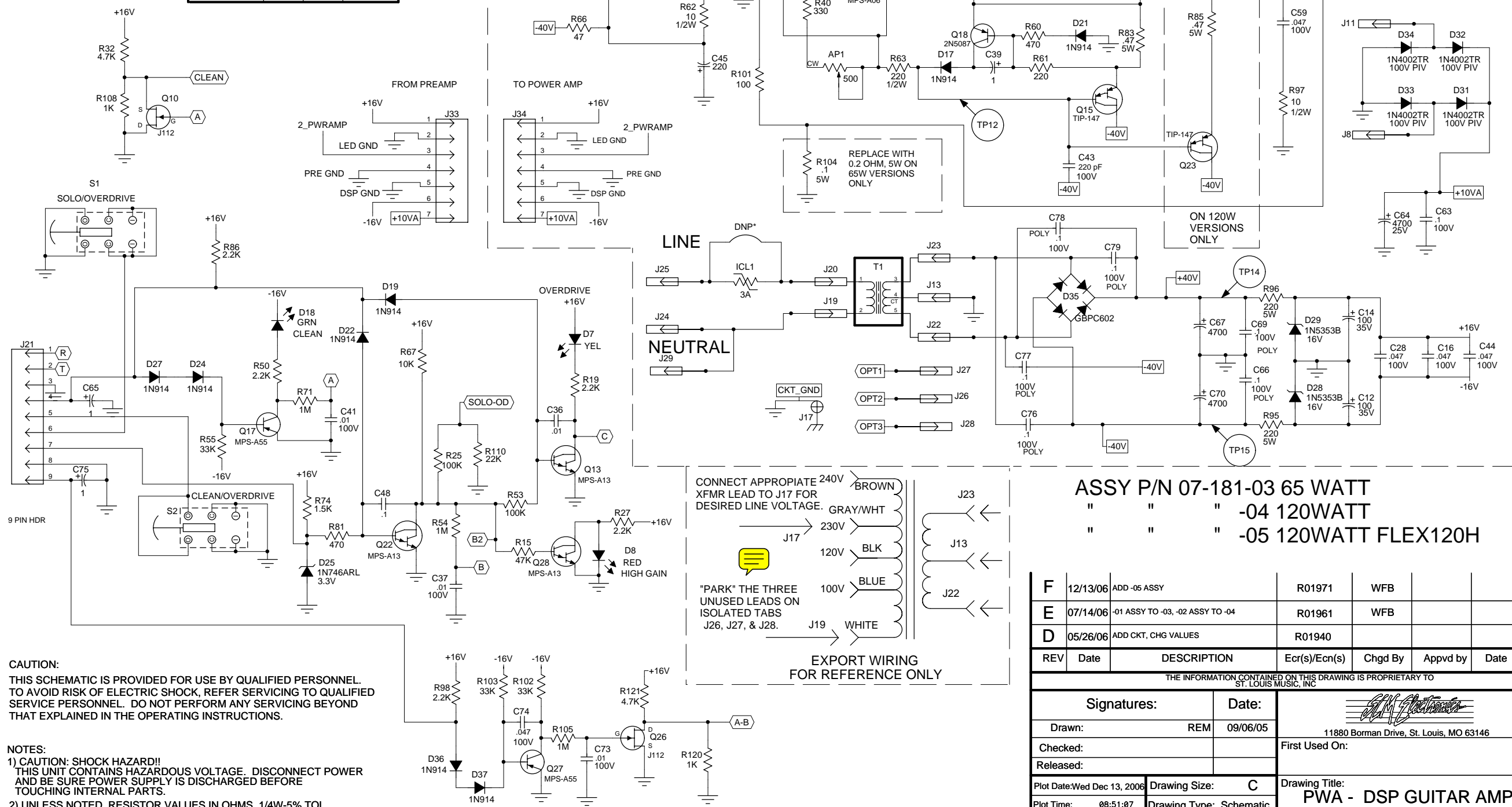
POWER AMP SECTION (ON BREAK-OFF)

TEST POINT CONDITIONS FOR POWER AMP:
 BIAS POWER AMP WITH 7 to 10mV ACROSS R33, R83, R23 AND R85
 WITH NO LOAD AND NO SIGNAL
 1.1Vpp 1kHz SINE WAVE INPUT INTO INSERT TIP, 4 OHM LOAD

TP	AC	DC
10	.65Vpp	.048V
11	35Vpp	1.4V
12	35Vpp	-.67V
13	32Vpp	.048V
14	1.8Vpp RIPPLE	34V
15	1.8Vpp RIPPLE	-34V

SWITCHING LOGIC

	A	B	C
HIGH GAIN	-10V	+10V	0V
OVERDRIVE	-10V	0V	+10V
CLEAN	0V	+10V	0V OR +10V



ASSY P/N 07-181-03 65 WATT
 " " " -04 120WATT
 " " " -05 120WATT FLEX120H

REV	Date	DESCRIPTION	Ecr(s)/Ecn(s)	Chgd By	Appvd by	Date
F	12/13/06	ADD -05 ASSY			R01971	WFB
E	07/14/06	-01 ASSY TO -03, -02 ASSY TO -04			R01961	WFB
D	05/26/06	ADD CKT, CHG VALUES			R01940	

THE INFORMATION CONTAINED ON THIS DRAWING IS PROPRIETARY TO ST. LOUIS MUSIC, INC.

Signatures:	Date:	 11880 Borman Drive, St. Louis, MO 63146
Drawn: REM	09/06/05	
Checked:		First Used On:
Released:		
Plot Date: Wed Dec 13, 2006	Drawing Size: C	Drawing Title: PWA - DSP GUITAR AMP
Plot Time: 08:51:07	Drawing Type: Schematic	Drawing Number: 07S181
Tolerance:	Class Code: NONE	
	Sheet 2 of 2	

CAUTION: THIS SCHEMATIC IS PROVIDED FOR USE BY QUALIFIED PERSONNEL. TO AVOID RISK OF ELECTRIC SHOCK, REFER SERVICING TO QUALIFIED SERVICE PERSONNEL. DO NOT PERFORM ANY SERVICING BEYOND THAT EXPLAINED IN THE OPERATING INSTRUCTIONS.

NOTES:
 1) CAUTION: SHOCK HAZARD!! THIS UNIT CONTAINS HAZARDOUS VOLTAGE. DISCONNECT POWER AND BE SURE POWER SUPPLY IS DISCHARGED BEFORE TOUCHING INTERNAL PARTS.
 2) UNLESS NOTED, RESISTOR VALUES IN OHMS, 1/4W-5% TOL. CAPACITOR VALUES IN MICROFARADS, 50V-10% TOL.
 3) VOLTAGES ARE MEASURED WITH 1 MEGOHM OSCILLOSCOPE AND 10 MEGOHM DIGITAL VOLTMETER.

* DO NOT PLACE