

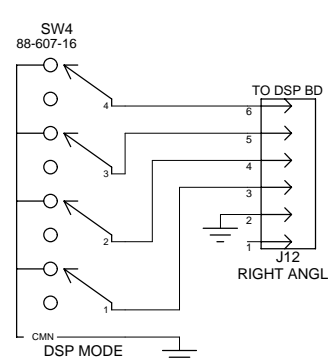
TP	CONDITION "A"	CONDITION "B"	CONDITION "C"
1	.16Vpp	.16Vpp	.54Vpp
2	6Vpp	6Vpp	6Vpp
3	6.4Vpp	5.5Vpp	—
4	5Vpp	5Vpp	—
5	14Vpp	8Vpp	—
6	—	—	5.5Vpp
7	6Vpp	8Vpp	4.5Vpp
8	6Vpp	8Vpp	2Vpp

TEST POINT CONDITIONS
 1] CONDITION "A": 'SOLO' SELECTED, GAIN 1 @ 10, 'SHAPE' @ 5, LEVEL @ 10, 1kHz 40mV SINE WAVE INPUT
 2] CONDITION "B": 'RHYTHM' SELECTED GAIN 2 @ 10, LOW & HIGH @ 5, LEVEL @ 10, 1kHz 40mV SINE WAVE INPUT
 3] CONDITION "C": 'CLEAN, LEVEL @ 10, LOW, MID, HIGH @ 5 1kHz 130mV SINE WAVE INPUT

RefDes	Part Number	+16V	-16V
IC1	37-072-01	8	4
IC2	37-072-01	8	4
IC3	37-072-01	8	4
IC4	37-072-01	8	4
IC5	37-072-01	8	4

CAUTION:
 THIS SCHEMATIC IS PROVIDED FOR USE BY QUALIFIED PERSONNEL. TO AVOID RISK OF ELECTRIC SHOCK, REFER SERVICING TO QUALIFIED SERVICE PERSONNEL. DO NOT PERFORM ANY SERVICING BEYOND THAT EXPLAINED IN THE OPERATING INSTRUCTIONS.

NOTES:
 1) CAUTION: SHOCK HAZARD!! THIS UNIT CONTAINS HAZARDOUS VOLTAGE. DISCONNECT POWER AND BE SURE POWER SUPPLY IS DISCHARGED BEFORE TOUCHING INTERNAL PARTS.
 2) UNLESS NOTED, RESISTOR VALUES IN OHMS, 1/4W-5% TOL. CAPACITOR VALUES IN MICROFARADS, 50V-10% TOL.
 3) VOLTAGES ARE MEASURED WITH 1 MEGOHM OSCILLOSCOPE AND 10 MEGOHM DIGITAL VOLTMETER.

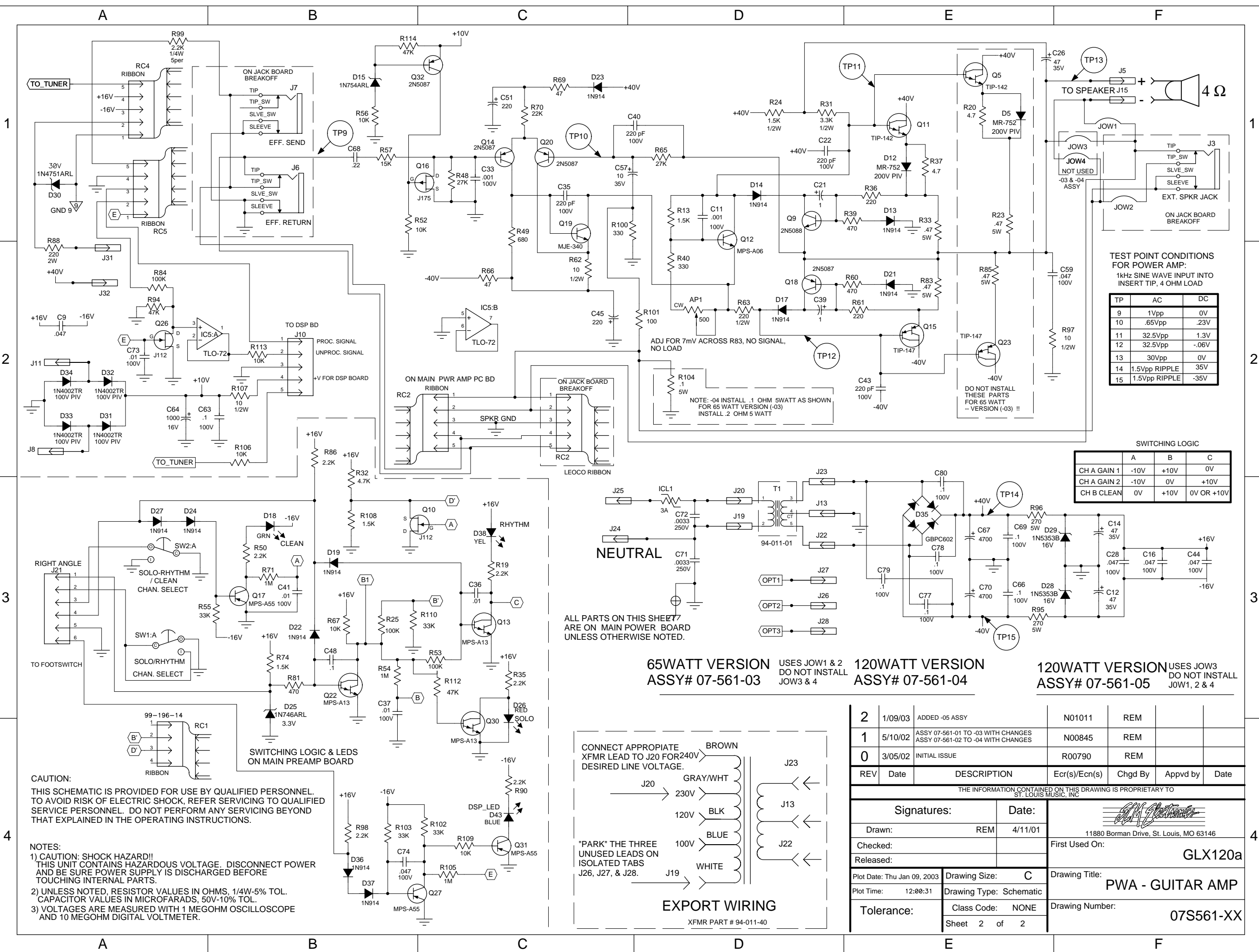


ALL PARTS ON THIS SHEET ARE ON MAIN PREAMP BOARD UNLESS OTHERWISE NOTED.

REV	Date	DESCRIPTION	Ecr(s)/Ecn(s)	Chgd By	Appvd by	Date
2	1/09/03	ADDED -05 ASSY		N01011	REM	
1	5/10/02	ASSY 07-561-01 TO -03 WITH CHANGES ASSY 07-561-02 TO -04 WITH CHANGES		N00845	REM	
0	3/05/02	INITIAL ISSUE		R00790	REM	

THE INFORMATION CONTAINED ON THIS DRAWING IS PROPRIETARY TO ST. LOUIS MUSIC, INC.

Signatures:	Date:	 11880 Borman Drive, St. Louis, MO 63146
Drawn: REM	4/11/01	
Checked:		First Used On:
Released:		GLX120a
Plot Date: Thu Jan 09, 2003	Drawing Size: C	Drawing Title:
Plot Time: 14:57:55	Drawing Type: Schematic	PWA - GUITAR AMP
Tolerance:	Class Code: NONE	Drawing Number:
	Sheet 1 of 2	07S561-XX



TEST POINT CONDITIONS FOR POWER AMP:
1kHz SINE WAVE INPUT INTO INSERT TIP, 4 OHM LOAD

TP	AC	DC
9	1Vpp	0V
10	.65Vpp	.23V
11	32.5Vpp	1.3V
12	32.5Vpp	-.06V
13	30Vpp	0V
14	1.5Vpp RIPPLE	35V
15	1.5Vpp RIPPLE	-35V

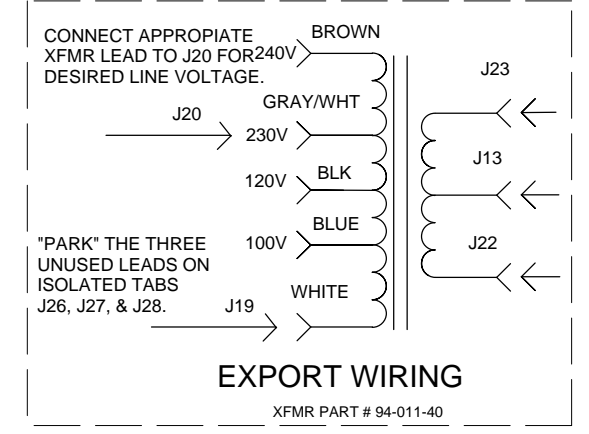
SWITCHING LOGIC

	A	B	C
CH A GAIN 1	-10V	+10V	0V
CH A GAIN 2	-10V	0V	+10V
CH B CLEAN	0V	+10V	0V OR +10V

65WATT VERSION ASSY# 07-561-03 USES JOW1 & 2 DO NOT INSTALL JOW3 & 4

120WATT VERSION ASSY# 07-561-04

120WATT VERSION ASSY# 07-561-05 USES JOW3 DO NOT INSTALL JOW1, 2 & 4



REV	Date	DESCRIPTION	Ecr(s)/Ecn(s)	Chgd By	Appvd by	Date
2	1/09/03	ADDED -05 ASSY	N01011	REM		
1	5/10/02	ASSY 07-561-01 TO -03 WITH CHANGES ASSY 07-561-02 TO -04 WITH CHANGES	N00845	REM		
0	3/05/02	INITIAL ISSUE	R00790	REM		

THE INFORMATION CONTAINED ON THIS DRAWING IS PROPRIETARY TO ST. LOUIS MUSIC, INC.

Signatures: _____ **Date:** 4/11/01

Drawn: REM
Checked: _____
Released: _____

Plot Date: Thu Jan 09, 2003
Plot Time: 12:00:31

Tolerance: _____

Class Code: NONE
Sheet 2 of 2

11880 Borman Drive, St. Louis, MO 63146
First Used On: _____
Drawing Title: **PWA - GUITAR AMP**
Drawing Number: **07S561-XX**

CAUTION:
THIS SCHEMATIC IS PROVIDED FOR USE BY QUALIFIED PERSONNEL. TO AVOID RISK OF ELECTRIC SHOCK, REFER SERVICING TO QUALIFIED SERVICE PERSONNEL. DO NOT PERFORM ANY SERVICING BEYOND THAT EXPLAINED IN THE OPERATING INSTRUCTIONS.

NOTES:
1) CAUTION: SHOCK HAZARD!! THIS UNIT CONTAINS HAZARDOUS VOLTAGE. DISCONNECT POWER AND BE SURE POWER SUPPLY IS DISCHARGED BEFORE TOUCHING INTERNAL PARTS.
2) UNLESS NOTED, RESISTOR VALUES IN OHMS, 1/4W-5% TOL. CAPACITOR VALUES IN MICROFARADS, 50V-10% TOL.
3) VOLTAGES ARE MEASURED WITH 1 MEGOHM OSCILLOSCOPE AND 10 MEGOHM DIGITAL VOLTMETER.