

1

2

3

4

REV	DATE	BY	CHK'D	DESCRIPTION
5	11-25-98	RLB	OK	J61,63,64 WERE 17-102-02 CHANGE PER ECO 980586
4	10-9-98	RLB	OK	CHANGE PS FROM 70-105-22 TO 70-105-26 CHANGE TO RADIAL PER ECO 980547 & 980536
3	7-1-98	RLB	OK	DELETED C5,C38 AND R57, C17 WAS .01uF CHANGE PER ECO 980427; ADDED HARDWARE QTY'S FOR -11 PER ECO 980274
2	3/02/98	REM	OK	ART TO REV 2 ,ADDED R111 & R112 PER EP80427.
1	2/03/98	REM	OK	ADDED GND WIRE, FIXED JW COUNT, REPLACED C1 ADDED H.S. ON IC2 & IC3, ADDED INSULATION PER E980150.

SIGNATURES:	DATE:
DRAWN: REM	1/15/98
CHK'D: OK	1/15/98
APP'D: OK	1/15/98
ORIGINAL ISSUED:	1/15/98
PLOT DATE:	1/15/98
PLOT TIME:	00:00
FILE NAME:	27101B5-

PROJECT NAME: VC-60/120_GUITAR_AMP	
DRAWING NAME: PICTORIAL	
DRAWING NO.:	07P271-01/-11
SCALE:	1:1
SHEET:	1_0F_3

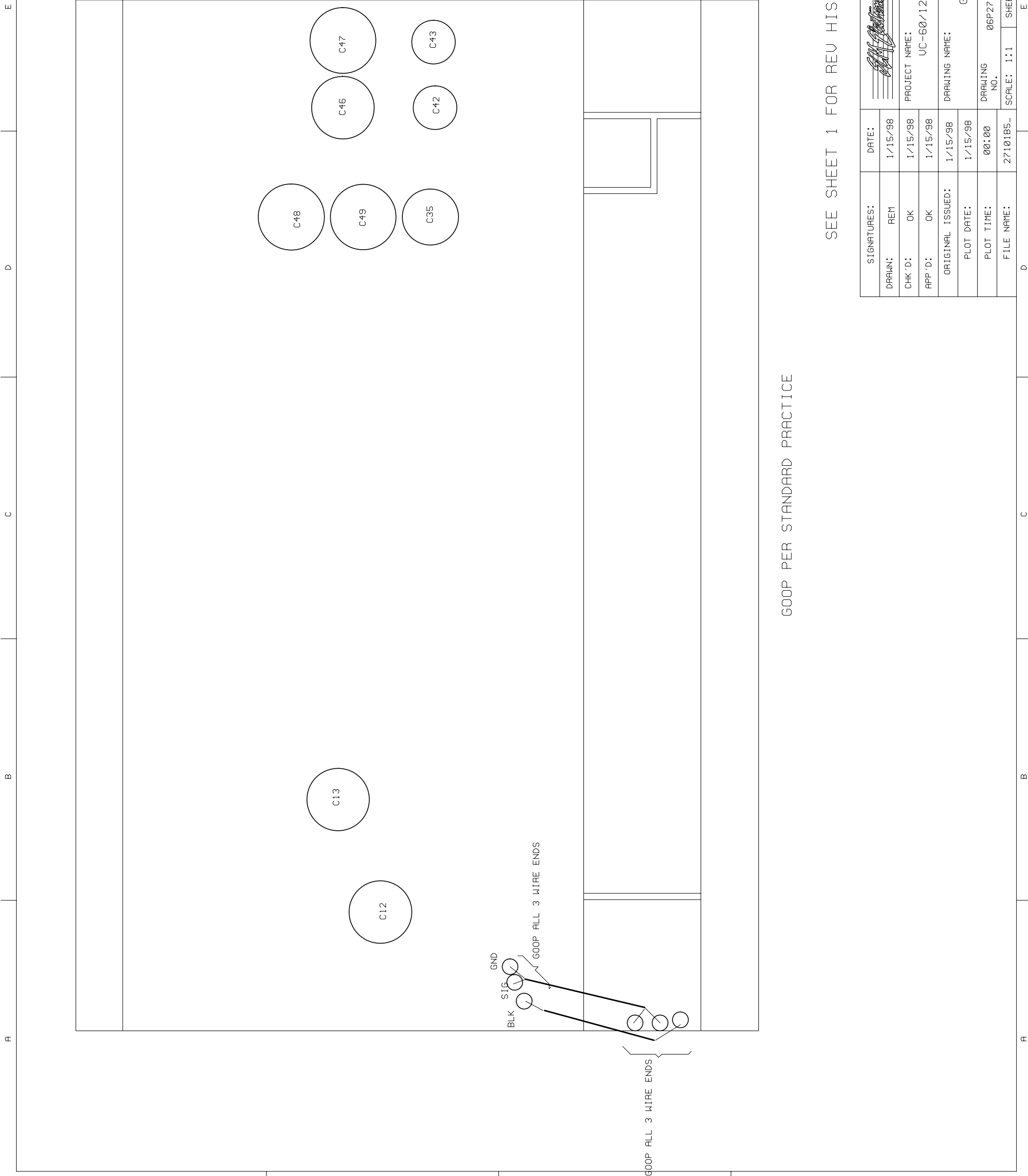
1

2

3

4

REF DES	PART #	DESCRIPTION	TRIM	REF DES	PART #	DESCRIPTION	REF DES	PART #	DESCRIPTION	REF DES	PART #	DESCRIPTION	REF DES	PART #	DESCRIPTION	REF DES	PART #	DESCRIPTION
AP1	71-253-50	25K		J1	39-012-01	112APC	R1	77-105-02	1M	R1	77-105-02	1M	R1	77-105-02	1M	R1	77-105-02	1M
C1	12R106-35	10uF	35U	J3	17-451-09	9-PIN	R2	77-683-02	68.1K	R2	77-683-02	68.1K	R2	77-683-02	68.1K	R2	77-683-02	68.1K
C2	10-223-10	.022uF	400U	J4	17-451-09	9-PIN	R3	77-152-02	1.5K	R3	77-152-02	1.5K	R3	77-152-02	1.5K	R3	77-152-02	1.5K
C3	10-222-10	.0022uF	500U	J5	17-451-09	9-PIN	R4	77-224-02	221K	R4	77-224-02	221K	R4	77-224-02	221K	R4	77-224-02	221K
C4	10-471-52	470pF	400U	J6	17-451-09	9-PIN	R5	77-105-02	1M	R5	77-105-02	1M	R5	77-105-02	1M	R5	77-105-02	1M
C5	10-103-10	.01uF	400U	J7	17-451-09	9-PIN	R6	77-224-02	221K	R6	77-224-02	221K	R6	77-224-02	221K	R6	77-224-02	221K
C6	12R225-50	2.2uF	500U	J8	17-451-09	9-PIN	R7	77-474-02	475K	R7	77-474-02	475K	R7	77-474-02	475K	R7	77-474-02	475K
C7	10-473-10	.047uF	400U	J9	17-451-09	9-PIN	R8	77-474-02	475K	R8	77-474-02	475K	R8	77-474-02	475K	R8	77-474-02	475K
C8	10-473-10	.047uF	400U	J10	17-450-04	8-PIN	R9	77-222-02	221K	R9	77-222-02	221K	R9	77-222-02	221K	R9	77-222-02	221K
C9	10-473-10	.047uF	400U	J11	17-450-04	8-PIN	R10	77-224-02	221K	R10	77-224-02	221K	R10	77-224-02	221K	R10	77-224-02	221K
C10	10-473-10	.047uF	400U	J12	17-836-01	TAB	R11	77-224-02	221K	R11	77-224-02	221K	R11	77-224-02	221K	R11	77-224-02	221K
C11	10-103-10	.01uF	400U	J13	17-894-01	TAB	R12	77-473-02	47.5K	R12	77-473-02	47.5K	R12	77-473-02	47.5K	R12	77-473-02	47.5K
C12	12-476-42	47uF	450U	J14	17-894-01	TAB	R13	77-224-02	221K	R13	77-224-02	221K	R13	77-224-02	221K	R13	77-224-02	221K
C13	12-476-42	47uF	450U	J15	17-894-01	TAB	R14	77-683-02	68.1K	R14	77-683-02	68.1K	R14	77-683-02	68.1K	R14	77-683-02	68.1K
C14	10R101-03	100pF	1KU	J16	17-836-01	TAB	R15	78-472-01	4.7K	R15	78-472-01	4.7K	R15	78-472-01	4.7K	R15	78-472-01	4.7K
C15	10-104-10	.1uF	400U	J17	17-836-01	TAB	R16	77-104-02	100K	R16	77-104-02	100K	R16	77-104-02	100K	R16	77-104-02	100K
C16	10-473-10	.047uF	400U	J18	17-836-01	TAB	R17	77-473-02	47.5K	R17	77-473-02	47.5K	R17	77-473-02	47.5K	R17	77-473-02	47.5K
C17	10R473-61	.047uF	600U	J19	17-836-01	TAB	R18	77-152-02	1.5K	R18	77-152-02	1.5K	R18	77-152-02	1.5K	R18	77-152-02	1.5K
C18	10R101-03	100pF	1KU	J20	17-836-01	TAB	R19	77-224-02	221K	R19	77-224-02	221K	R19	77-224-02	221K	R19	77-224-02	221K
C19	12R225-50	2.2uF	500U	J21	17-836-01	TAB	R20	77-224-02	221K	R20	77-224-02	221K	R20	77-224-02	221K	R20	77-224-02	221K
C20	10-223-10	.022uF	400U	J22	17-836-01	TAB	R21	77-224-02	221K	R21	77-224-02	221K	R21	77-224-02	221K	R21	77-224-02	221K
C21	10-223-10	.022uF	400U	J23	17-836-01	TAB	R22	77-474-02	475K	R22	77-474-02	475K	R22	77-474-02	475K	R22	77-474-02	475K
C22	10-104-10	.1uF	400U	J24	17-836-01	TAB	R23	77-152-02	1.5K	R23	77-152-02	1.5K	R23	77-152-02	1.5K	R23	77-152-02	1.5K
C23	10-104-10	.1uF	400U	J25	17-836-01	TAB	R24	77-105-02	1M	R24	77-105-02	1M	R24	77-105-02	1M	R24	77-105-02	1M
C24	10-471-52	470pF	500U	J26	17-836-01	TAB	R25	77-223-02	22.1K	R25	77-223-02	22.1K	R25	77-223-02	22.1K	R25	77-223-02	22.1K
C25	10-223-10	.022uF	400U	J27	17-836-01	TAB	R26	77-104-02	100K	R26	77-104-02	100K	R26	77-104-02	100K	R26	77-104-02	100K
C26	10-223-10	.022uF	400U	J28	17-836-01	TAB	R27	77-104-02	100K	R27	77-104-02	100K	R27	77-104-02	100K	R27	77-104-02	100K
C27	10-104-10	.1uF	400U	J29	17-836-01	TAB	R28	77-333-02	33.2K	R28	77-333-02	33.2K	R28	77-333-02	33.2K	R28	77-333-02	33.2K
C28	10-684-21	.68uF	250U	J30	17-836-01	TAB	R29	77-105-02	1M	R29	77-105-02	1M	R29	77-105-02	1M	R29	77-105-02	1M
C29	10-104-21	.1uF	250U	J31	17-836-01	TAB	R30	77-152-02	1.5K	R30	77-152-02	1.5K	R30	77-152-02	1.5K	R30	77-152-02	1.5K
C30	10-223-10	.022uF	400U	J32	17-836-01	TAB	R31	78-103-02	10K	R31	78-103-02	10K	R31	78-103-02	10K	R31	78-103-02	10K
C31	10-104-10	.1uF	400U	J33	17-836-01	TAB	R32	78-103-02	10K	R32	78-103-02	10K	R32	78-103-02	10K	R32	78-103-02	10K
C32	10-104-10	.1uF	400U	J34	17-836-01	TAB	R33	77-224-02	221K	R33	77-224-02	221K	R33	77-224-02	221K	R33	77-224-02	221K
C33	10-104-10	.1uF	400U	J35	17-836-01	TAB	R34	77-224-02	221K	R34	77-224-02	221K	R34	77-224-02	221K	R34	77-224-02	221K
C34	10-104-10	.1uF	400U	J36	17-836-01	TAB	R35	77-473-02	47.5K	R35	77-473-02	47.5K	R35	77-473-02	47.5K	R35	77-473-02	47.5K
C35	10-104-10	.1uF	400U	J37	17-836-01	TAB	R36	77-473-02	47.5K	R36	77-473-02	47.5K	R36	77-473-02	47.5K	R36	77-473-02	47.5K
C36	12-476-42	47uF	450U	J38	17-836-01	TAB	R37	77-473-02	47.5K	R37	77-473-02	47.5K	R37	77-473-02	47.5K	R37	77-473-02	47.5K
C37	10-222-10	.0022uF	400U	J39	17-836-01	TAB	R38	77-102-02	1K	R38	77-102-02	1K	R38	77-102-02	1K	R38	77-102-02	1K
C38	10R223-01	.022uF	50U	J40	17-836-01	TAB	R39	77-104-02	100K	R39	77-104-02	100K	R39	77-104-02	100K	R39	77-104-02	100K
C39	10R560-21	56pF	200U	J41	17-836-01	TAB	R40	77-474-02	475K	R40	77-474-02	475K	R40	77-474-02	475K	R40	77-474-02	475K
C40	12R475-20	4.7uF	200U	J42	17-836-01	TAB	R41	77-471-02	475	R41	77-471-02	475	R41	77-471-02	475	R41	77-471-02	475
C41	12R475-20	4.7uF	200U	J43	17-604-01	CONNECTOR	R42	77-105-02	1M	R42	77-105-02	1M	R42	77-105-02	1M	R42	77-105-02	1M
C42	12-228-26	2200uF	25U	J44	51-149-01	GNLUG	R43	77-103-02	10K	R43	77-103-02	10K	R43	77-103-02	10K	R43	77-103-02	10K
C43	12-228-26	2200uF	25U	J45	39-119-01	T/S	R44	77-472-02	4.75K	R44	77-472-02	4.75K	R44	77-472-02	4.75K	R44	77-472-02	4.75K
C44	12R106-35	10uF	35U	J46	39-119-01	T/S	R45	78-472-01	4.7K	R45	78-472-01	4.7K	R45	78-472-01	4.7K	R45	78-472-01	4.7K
C45	12R106-35	10uF	35U	J47	39-119-01	T/S	R46	77-823-02	82.5K	R46	77-823-02	82.5K	R46	77-823-02	82.5K	R46	77-823-02	82.5K
C46	12-107-94	100uF	350U	J48	39-120-01	T/R/S	R47	77-104-02	100K	R47	77-104-02	100K	R47	77-104-02	100K	R47	77-104-02	100K
C47	12-107-94	100uF	350U	J49	39-012-01	112APC	R48	77-104-02	100K	R48	77-104-02	100K	R48	77-104-02	100K	R48	77-104-02	100K
C48	12-107-94	100uF	350U	J50	17-450-04	8-PIN	R49	77-104-02	100K	R49	77-104-02	100K	R49	77-104-02	100K	R49	77-104-02	100K
C49	12-107-94	100uF	350U	J51	17-450-04	8-PIN	R50	78-472-01	4.7K	R50	78-472-01	4.7K	R50	78-472-01	4.7K	R50	78-472-01	4.7K
C50	10-332-01	.0033uF	UL	J52	17-836-01	GNLUG	R51	77-472-02	4.75K	R51	77-472-02	4.75K	R51	77-472-02	4.75K	R51	77-472-02	4.75K
C51	10-332-01	.0033uF	UL	J53	51-149-01	GNLUG	R52	77-472-02	4.75K	R52	77-472-02	4.75K	R52	77-472-02	4.75K	R52	77-472-02	4.75K
C52	10-471-52	470pF	500U	J54	17-105-02	HEADER	R53	78-102-05	1K	R53	78-102-05	1K	R53	78-102-05	1K	R53	78-102-05	1K
C53	10-471-52	470pF	500U	J55	17-105-02	HEADER	R54	78-102-05	1K	R54	78-102-05	1K	R54	78-102-05	1K	R54	78-102-05	1K
C54	10-102-10	.001uF	500U	J56	17-105-02	HEADER	R55	76-102-05	1K	R55	76-102-05	1K	R55	76-102-05	1K	R55	76-102-05	1K
C55	10-471-52	470pF	500U	J57	17-105-02	HEADER	R56	76-105-01	1M	R56	76-105-01	1M	R56	76-105-01	1M	R56	76-105-01	1M
C56	10F154-02	.15uF	100U	J58	17-105-08	HEADER	R57	77-223-02	22.1K	R57	77-223-02	22.1K	R57	77-223-02	22.1K	R57	77-22	



GOOP PER STANDARD PRACTICE

SEE SHEET 1 FOR REV HISTORY!

SIGNATURES:	DATE:	11880 BORMAN DR. ST. LOUIS, MISSOURI 63146
DRAWN: REM	1/15/98	
CHK'D: OK	1/15/98	PROJECT NAME: UC-60/120_GUITAR_AMP
APP'D: OK	1/15/98	DRAWING NAME: GOOP
ORIGINAL ISSUED:	1/15/98	
PLOT DATE:	1/15/98	
PLOT TIME:	00:00	DRAWING NO. 06P271-01/11
FILE NAME:	27101B5	REV. 5-
		SCALE: 1:1 SHEET: 3_OF_3