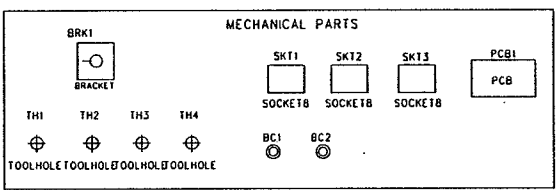
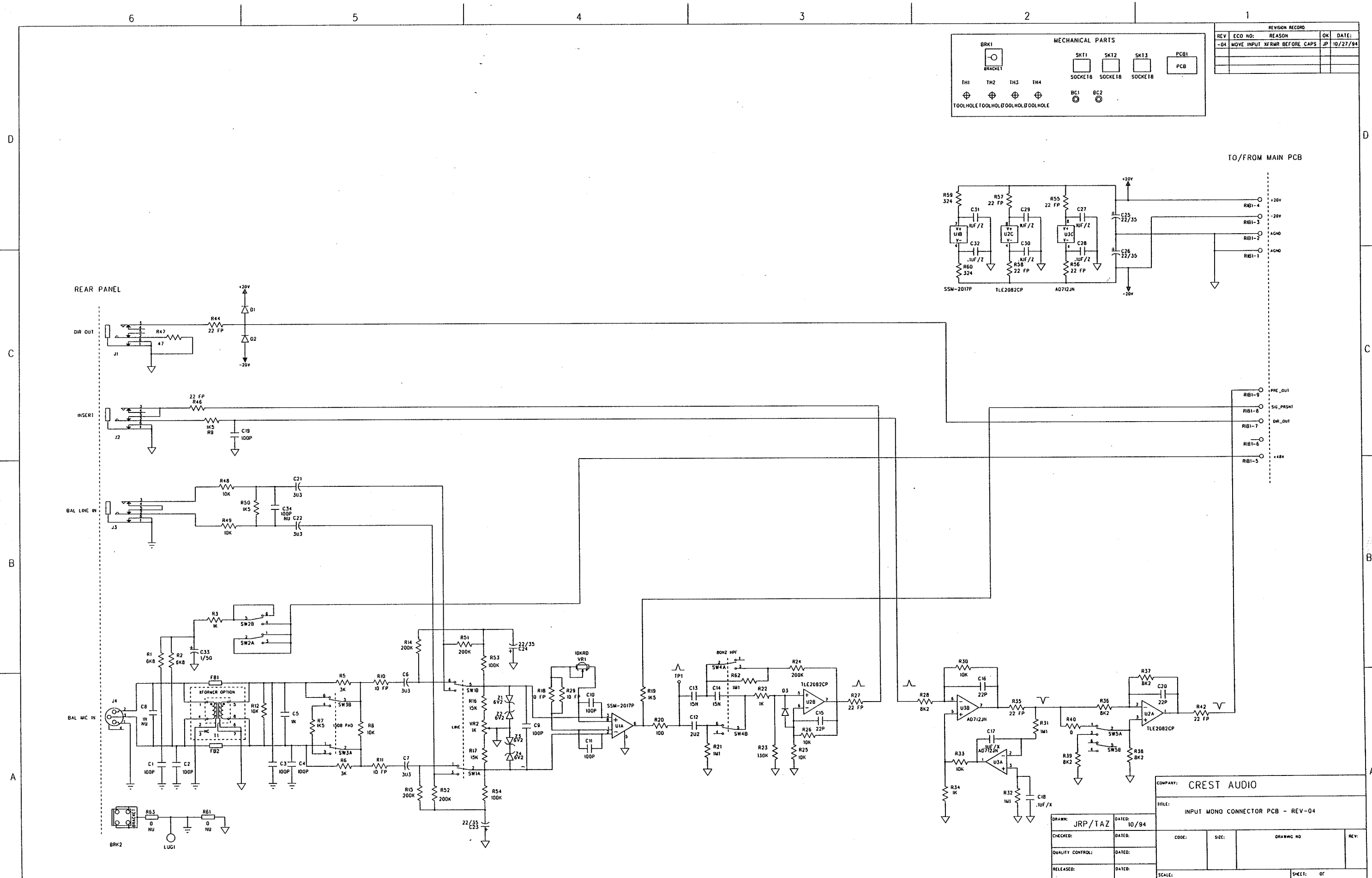


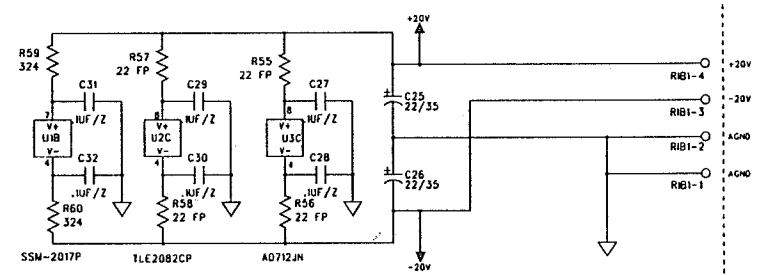


# CENTURY GT SCHEMATICS

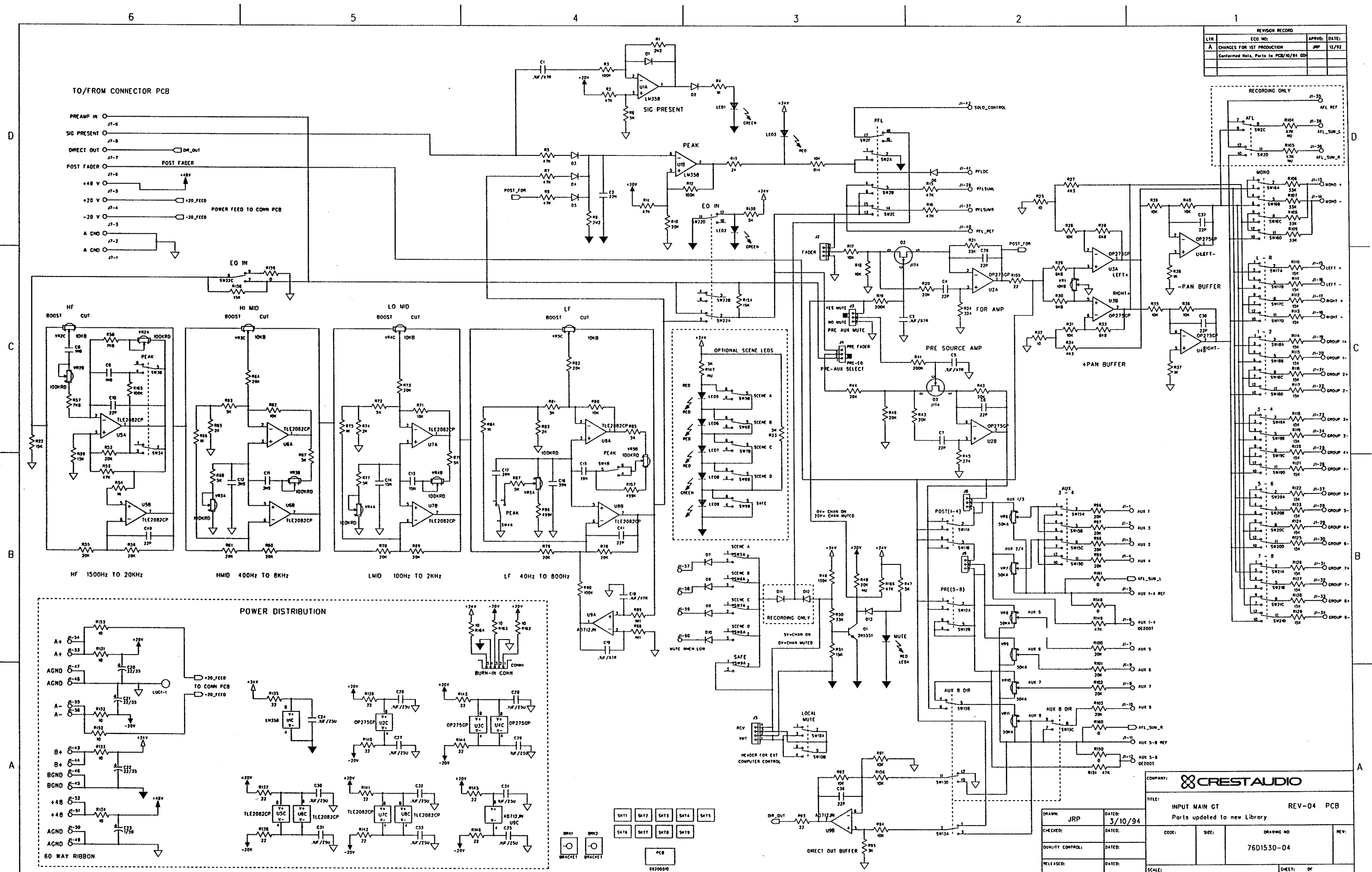
<b>LOCATION</b>	<b>DESCRIPTION</b>	<b>SCHEMATIC #</b>	<b>DWG #</b>	<b>REV #</b>
<b>STANDARD INPUT MODULE</b>	INPUT CONNECTOR PCB	1	N/A	04
	GT INPUT MAIN PCB	2	76D1530	04
	TC INPUT MAIN PCB	3	N/A	02
	SP INPUT MAIN PCB	4	N/A	02
<b>STEREO INPUT MODULE</b>	STEREO INPUT CONNECTOR	5	76D1920	02
	STEREO INPUT MAIN PCB (1 OF 2)	6	76D1919	01
	STEREO INPUT MAIN PCB (2 OF 2)	7	76D1919	01
<b>GROUP MODULE</b>	GROUP CONNECTOR PCB	8	N/A	01
	GROUP MAIN PCB	9	N/A	03
<b>LEFT / RIGHT OUTPUT MODULE</b>	LEFT / RIGHT CONNECTOR PCB	10	N/A	01
	L/R MAIN PCB	11	N/A	04
<b>MONO OUTPUT MODULE</b>	MONO CONNECTOR PCB	12	N/A	04
	MONO MAIN PCB	13	N/A	03
<b>MASTER CONTROL MODULE</b>	MASTER CONNECTOR PCB	14	N/A	04
	MASTER MAIN PCB	15	N/A	04
<b>MATRIX MODULE</b>	MATRIX CONNECTOR PCB	16	76D1922	02
	MATRIX MAIN PCB	17	76D1921	01
<b>RIBBON CABLE PIN OUT DIAGRAMS</b>	RIBBON PIN OUTS	18		



REVISION RECORD				
REV	ECO NO:	REASON	OK	DATE:
-04		MOVE INPUT XFRMR BEFORE CAPS	JP	10/27/94



Schematic #1



Schematic #2



