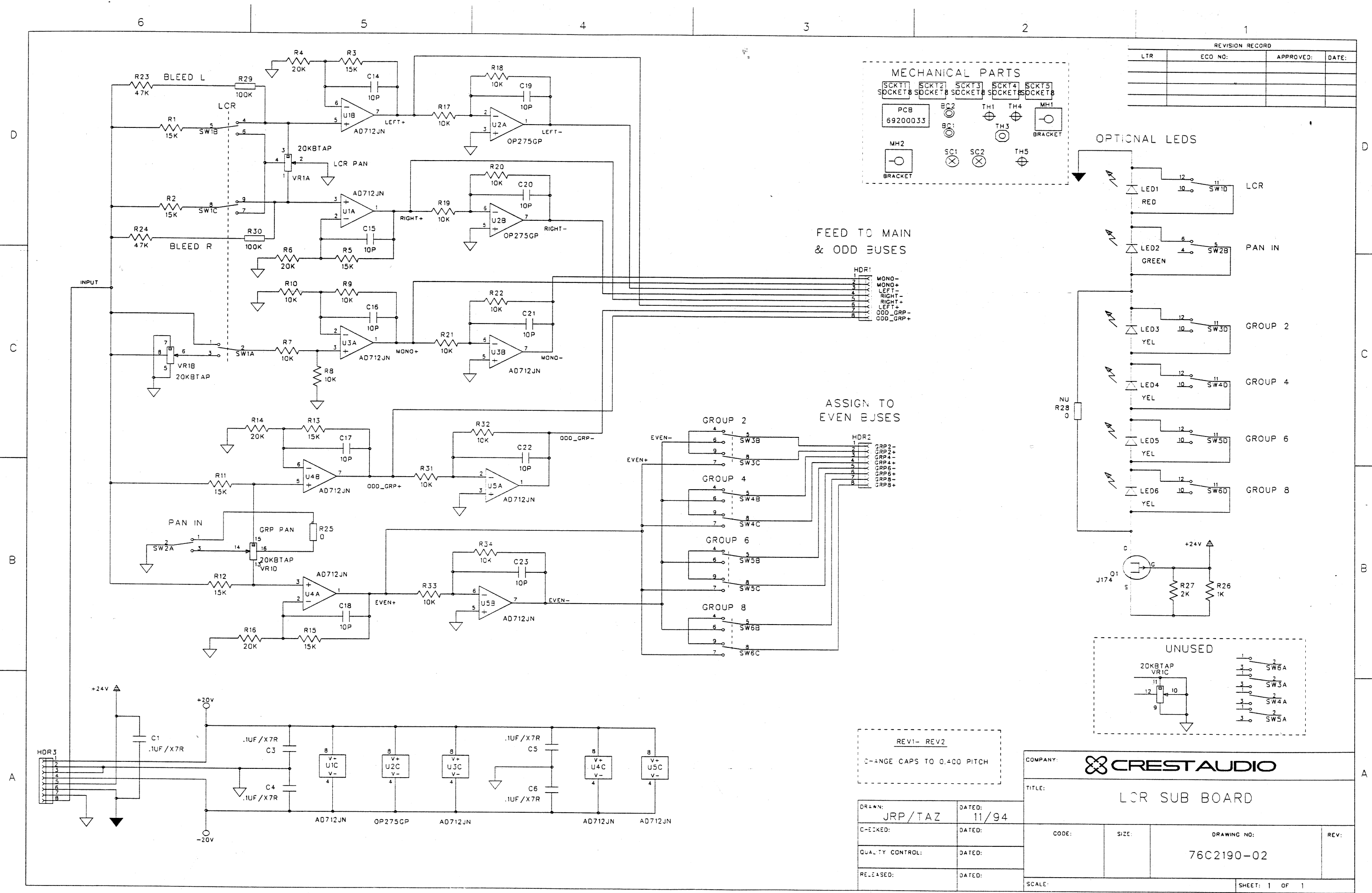


Schematic #2



REVISION RECORD			
LTR	ECO NO:	APPROVED:	DATE:

MECHANICAL PARTS

SCKT11	SCKT12	SCKT13	SCKT14	SCKT15
SOCKET 8	SOCKET 8	SOCKET 8	SOCKET 8	SOCKET 8
PCB 69200033	BC2	TH1	TH4	MH1
	BC1	TH3		BRACKET
MH2	SC1	SC2	TH5	
BRACKET				

OPTIONAL LEADS

LED1	RED	SW10	LCR
LED2	GREEN	SW2B	PAN IN
LED3	YEL	SW3D	GROUP 2
LED4	YEL	SW4D	GROUP 4
LED5	YEL	SW5D	GROUP 6
LED6	YEL	SW6D	GROUP 8

Power supply section:

+24V

J174 Q1

R27 2K

R26 1K

UNUSED

20KBTAP VR1C

SW6A

SW3A

SW4A

SW5A

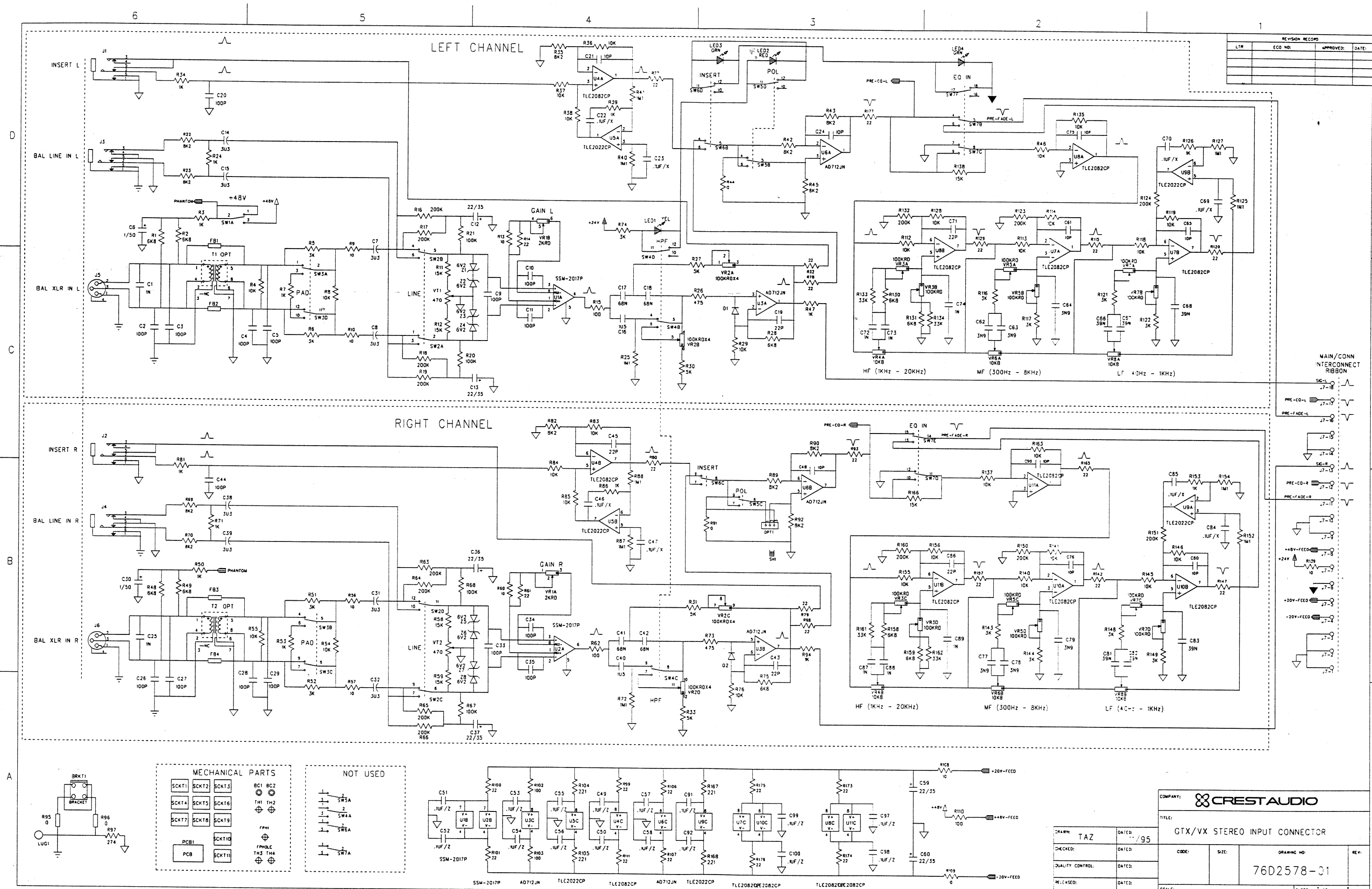
REV1- REV2

CHANGE CAPS TO 0.400 PITCH

DRAWN:	DATED:
JRP/TAZ	11/94
CHECKED:	DATED:
QUALITY CONTROL:	DATED:
RELEASED:	DATED:

COMPANY: CRESTAUDIO			
TITLE: LCR SUB BOARD			
CODE:	SIZE:	DRAWING NO:	REV:
		76C2190-02	
SCALE:		SHEET: 1 OF 1	

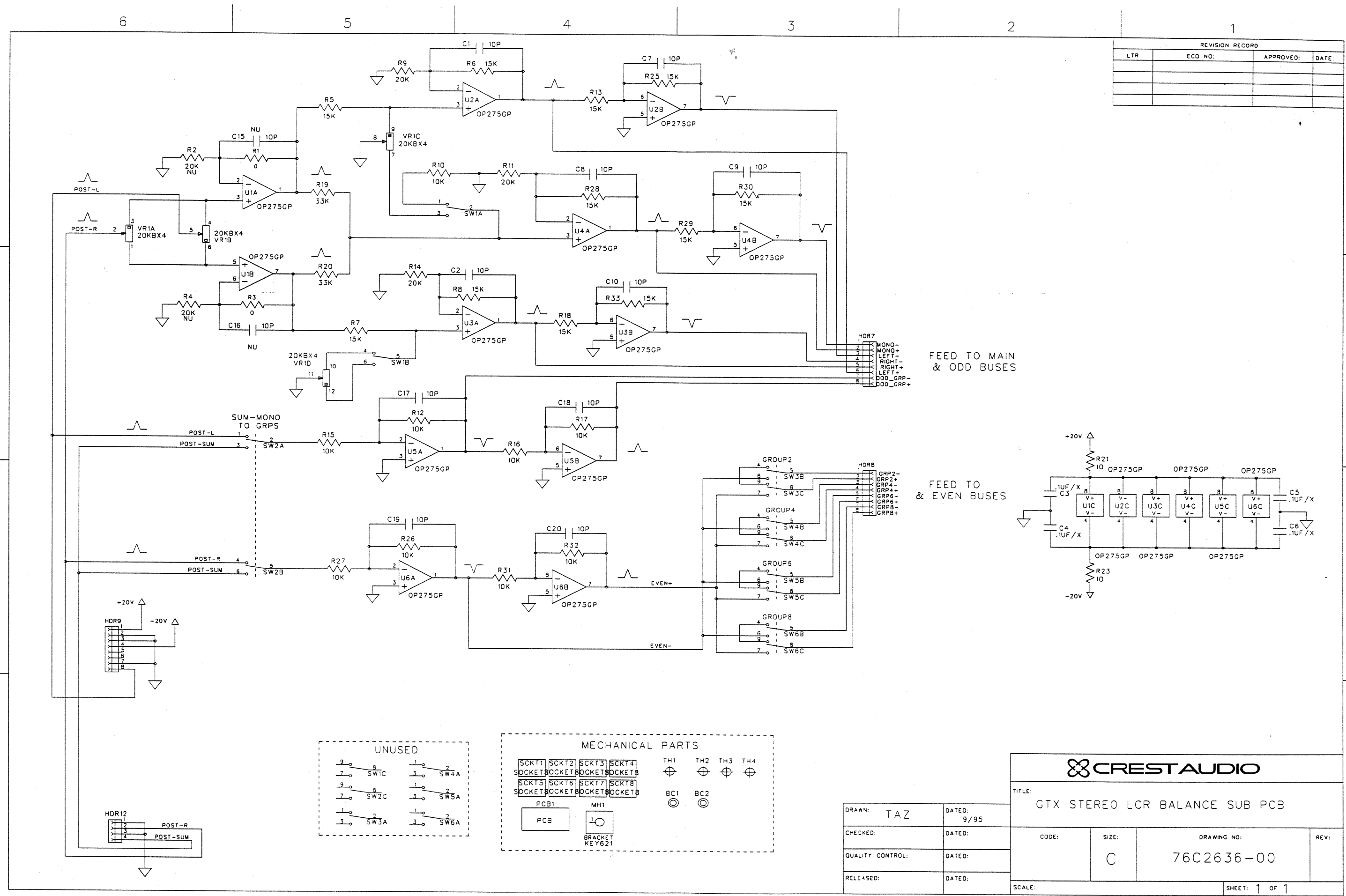
Schematic #3



REVISION RECORD			
LTR	ECO NO.	APPROVED	DATE

COMPANY: CREST AUDIO	
TITLE: GTX/VX STEREO INPUT CONNECTOR	
CODE: 76D2578-01	REV: 1
DATE: 11/95	SCALE: 1 OF 1

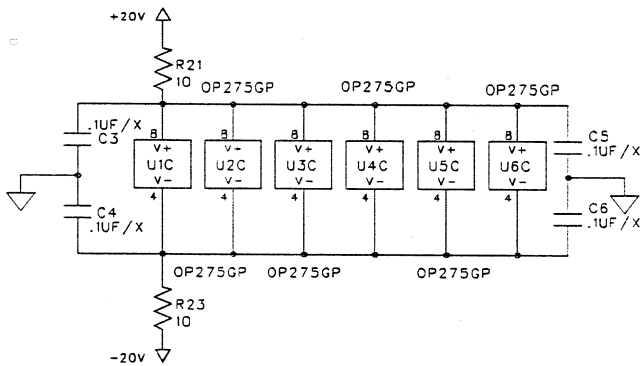
Schematic #4



REVISION RECORD			
LTR	ECO NO:	APPROVED:	DATE:

FEED TO MAIN
& ODD BUSES

FEED TO
& EVEN BUSES

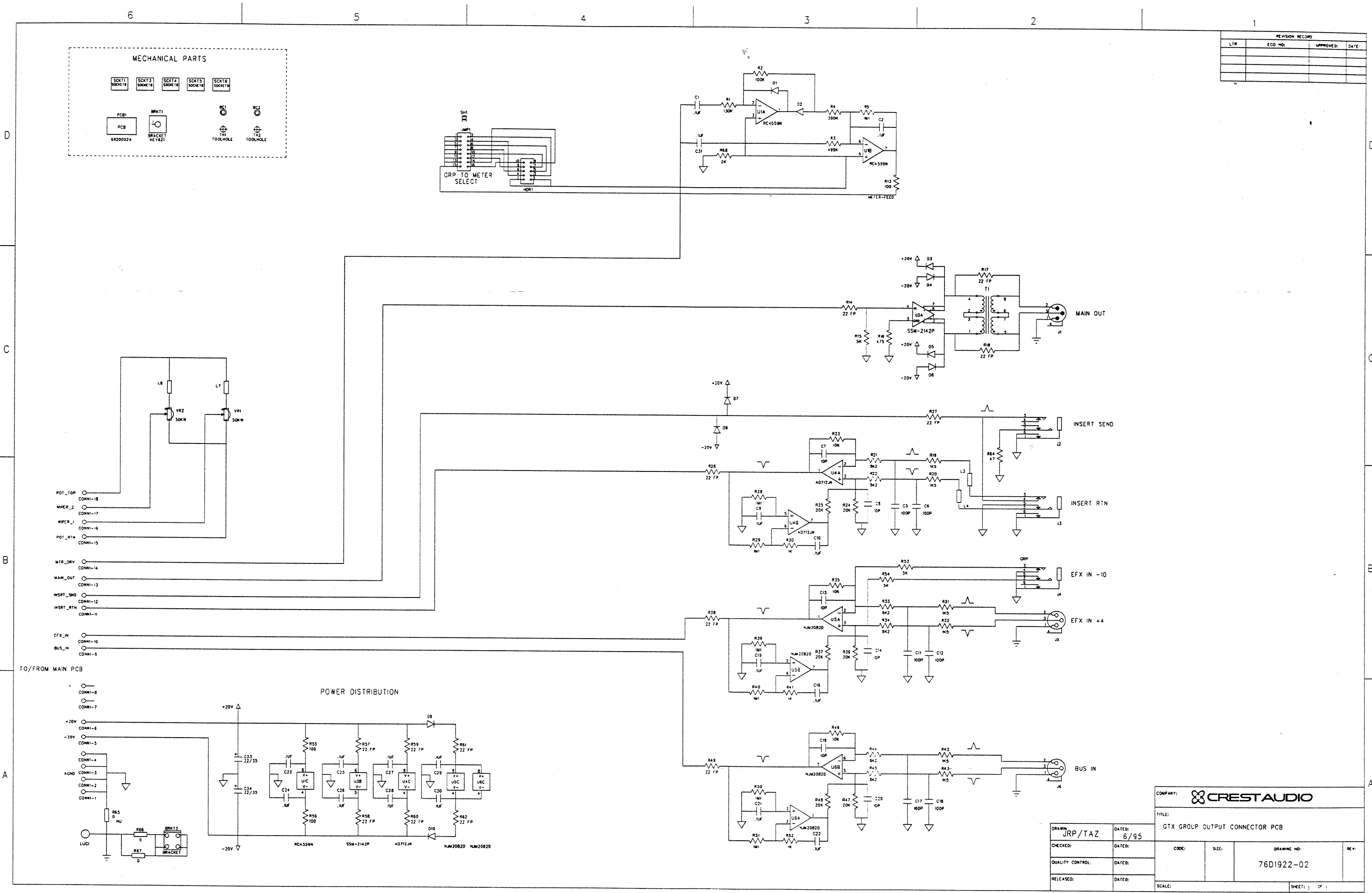


UNUSED			
9	8	1	2
7	SW1C	3	SW4A
9	8	1	2
7	SW2C	3	SW5A
1	2	1	2
3	SW3A	3	SW6A

MECHANICAL PARTS			
SCKT1	SCKT2	SCKT3	SCKT4
SOCKET	SOCKET	SOCKET	SOCKET
SCKT5	SCKT6	SCKT7	SCKT8
SOCKET	SOCKET	SOCKET	SOCKET
PCB1	MH1	TH1	TH2
PCB	BRACKET	TH3	TH4
	KEY621	BC1	BC2

CREST AUDIO			
TITLE: GTX STEREO LCR BALANCE SUB PCB			
CODE:	SIZE:	DRAWING NO:	REV:
	C	76C2636-00	
SCALE:		SHEET: 1 OF 1	

DRAWN:	TAZ	DATED:	9/95
CHECKED:		DATED:	
QUALITY CONTROL:		DATED:	
RELEASED:		DATED:	



REVISION RECORD			
LTR	ECO NO.	APPROVED	DATE

COMPANY: CREST AUDIO			
TITLE: GTX GROUP OUTPUT CONNECTOR PCB			
DRAWN: JRP/TAZ	DATED: 6/95	CODE:	SIZE:
CHECKED:	DATED:	QUALITY CONTROL:	DATED:
RELEASED:	DATED:	SCALE:	SHEET: 1 OF 1
DRAWING NO: 76D1922-02		REV:	

Schematic #7