

E.C.N.	REV.	DESCRIPTION	DATE	BY	CHKD.	APP'D.
J0444-04	0	CREATED CHANNEL 2 ON SHEET 3 OF 3	4-1-91	LCD		

**COMMON**

LAST USED	OBSOLETE
CB	CB
DB	
EB	
FB	
GB	
HB	
IB	
LB	
MB	

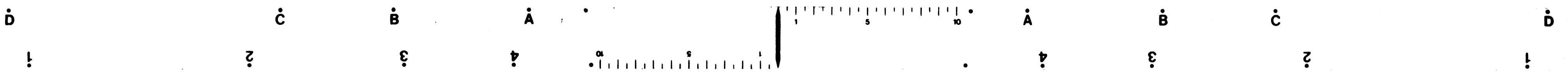
**CHANNEL 1**

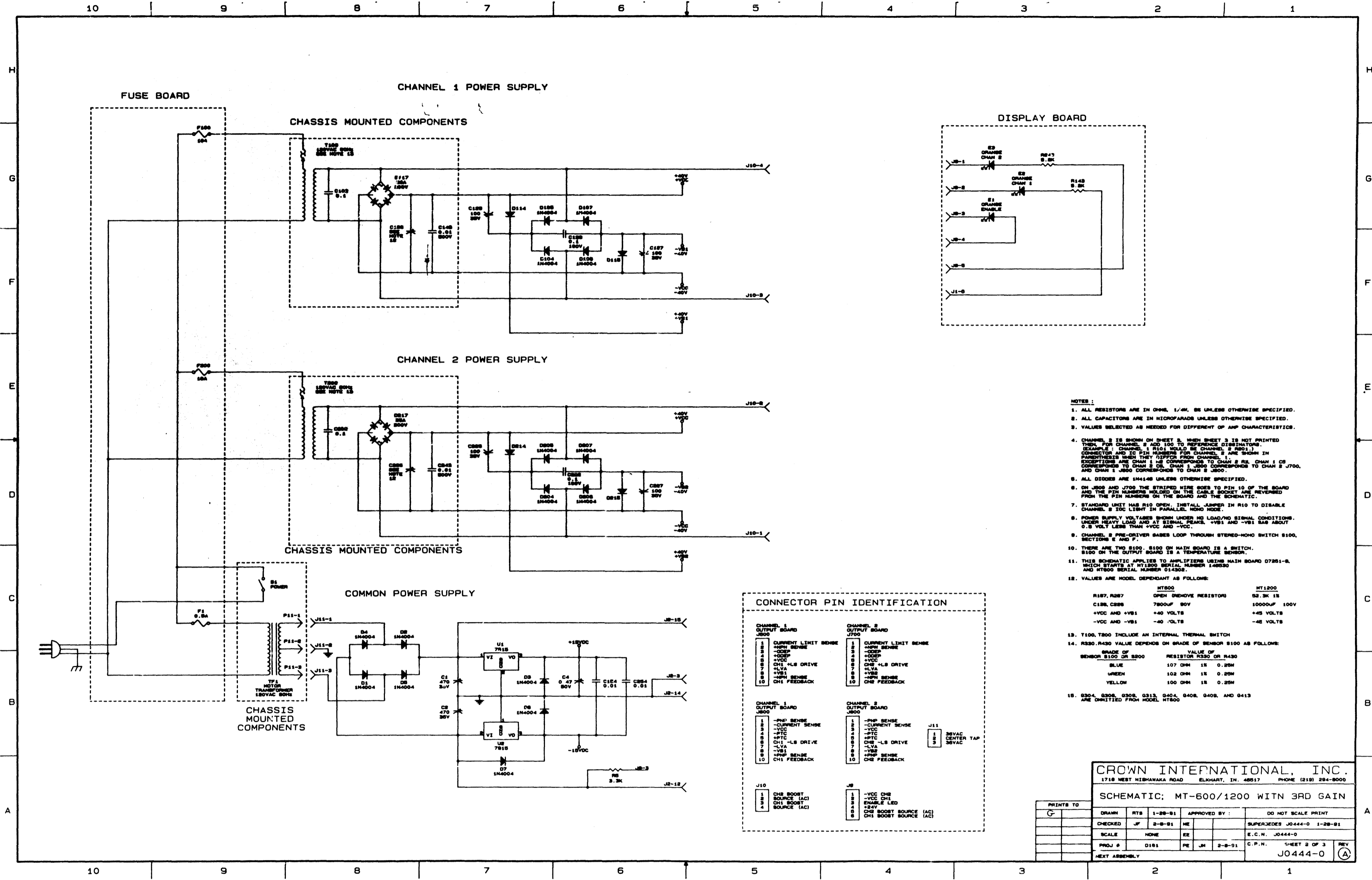
LAST USED	OBSOLETE
C153	C107, 109-111, 119-121, 129, 131, 132, 142
C309	C300
D124	D100-103, 116, 118, 119
D312	D300
L302	
PTC301	
Q122	Q114
Q316	Q300
R127	R143-145, 154, 156, 160, 163-166, 173, 177, 178, 184
R340	R329, 331-334
U101	U101, 102

**CROWN INTERNATIONAL, INC.**  
 1718 WEST WISHANAKA ROAD ELKHART, IN. 46517 PHONE (219) 294-8000

**SCHEMATIC: MT-600/1200 WITH 3RD GAIN**

PRINTS TO	DRAWN	RTS	1-28-91	APPROVED BY:	DO NOT SCALE PRINT
G					
CHECKED	✓	2-8-91	HE		SUPERSEDES J0444-0 1-28-91
SCALE	NONE	EE			E.C.N. J0444-0
PROJ. #	D149	PE	JM	2-8-91	C.P.N. SHEET 1 OF 3
NEXT ASSEMBLY					J0444-0 (A)





- NOTES:**
1. ALL RESISTORS ARE IN OHMS, 1/4W, 5% UNLESS OTHERWISE SPECIFIED.
  2. ALL CAPACITORS ARE IN MICROFARADS UNLESS OTHERWISE SPECIFIED.
  3. VALUES SELECTED AS NEEDED FOR DIFFERENT AMP CHARACTERISTICS.
  4. CHANNEL 2 IS SHOWN ON SHEET 3. WHEN SHEET 3 IS NOT PRINTED THEN FOR CHANNEL 2 ADD 100 TO REFERENCE DESIGNATIONS. (EXAMPLE: CHANNEL 1 R101 SHOULD BE CHANNEL 2 R201.) CONNECTOR AND IC PIN NUMBERS FOR CHANNEL 2 ARE SHOWN IN PARENTHESES. (EXAMPLE: J100 FOR CHANNEL 2 IS J200 IN PARENTHESES.)
  5. ALL DIODES ARE 1N4004 UNLESS OTHERWISE SPECIFIED.
  6. ON J100 AND J101 THE STRIPED WIRE GOES TO PIN 10 OF THE BOARD AND THE PIN NUMBERS MOLDED ON THE CABLE SOCKET ARE REVERSED FROM THE PIN NUMBERS ON THE BOARD AND THE SCHEMATIC.
  7. STANDARD UNIT HAS R10 OPEN. INSTALL .47MΩ IN R10 TO DISABLE CHANNEL 2 IDC LIGHT IN PARALLEL. MONO MODE.
  8. POWER SUPPLY VOLTAGES SHOWN UNDER NO LOAD/NO SIGNAL CONDITIONS. UNDER HEAVY LOAD AND AT SIGNAL PEAKS, +VBS AND +VBI MAY BE ABOUT 0.5 VOLT LESS THAN +VCC AND -VCC.
  9. CHANNEL 2 PRE-DRIVER BASES LOOP THROUGH STEREO-MONO SWITCH S100, SECTIONS E AND F.
  10. THERE ARE TWO S100, S101 ON MAIN BOARD IS A SWITCH. S100 ON THE OUTPUT BOARD IS A TEMPERATURE SENSOR.
  11. THIS SCHEMATIC APPLIES TO AMPLIFIERS USING MAIN BOARD 07201-B WHICH STARTS AT MT1000 SERIAL NUMBER 140530 AND MT800 SERIAL NUMBER 014325.
  12. VALUES ARE MODEL DEPENDENT AS FOLLOWS:
 

	MT800	MT1000
R187, R287	OPEN (REMOVE RESISTOR)	52.3K Ω
C128, C228	7800μF 50V	10000μF 100V
+VCC AND +VBI	+40 VOLTS	+45 VOLTS
-VCC AND -VBI	-40 VOLTS	-45 VOLTS
  13. T100, T200 INCLUDE AN INTERNAL THERMAL SWITCH. S100 ON THE OUTPUT BOARD IS A TEMPERATURE SENSOR.
  14. R330, R430 VALUE DEPENDS ON GRADE OF SENSOR S100 AS FOLLOWS:
 

GRADE OF SENSOR S100 OR S200	VALUE OF RESISTOR R330 OR R430
BLUE	107 OHMS 1% 0.25W
GREEN	102 OHMS 1% 0.25W
YELLOW	100 OHMS 1% 0.25W
  15. 0304, 0308, 0308, 0313, 0404, 0408, 0408, AND 0413 ARE OMITTED FROM MODEL MT800

**CONNECTOR PIN IDENTIFICATION**

CHANNEL 1 OUTPUT BOARD (J10)	CHANNEL 2 OUTPUT BOARD (J10)
1 -PSP SENSE	1 -PSP SENSE
2 -CURRENT SENSE	2 -CURRENT SENSE
3 +VCC	3 +VCC
4 -VCC	4 -VCC
5 -VBI	5 -VBI
6 -VBS	6 -VBS
7 -LVA	7 -LVA
8 -LVB	8 -LVB
9 -PSP SENSE	9 -PSP SENSE
10 -CH1 FEEDBACK	10 -CH2 FEEDBACK

CHANNEL 1 OUTPUT BOARD (J10)	CHANNEL 2 OUTPUT BOARD (J10)
1 -PSP SENSE	1 -PSP SENSE
2 -CURRENT SENSE	2 -CURRENT SENSE
3 +VCC	3 +VCC
4 -VCC	4 -VCC
5 -VBI	5 -VBI
6 -VBS	6 -VBS
7 -LVA	7 -LVA
8 -LVB	8 -LVB
9 -PSP SENSE	9 -PSP SENSE
10 -CH1 FEEDBACK	10 -CH2 FEEDBACK

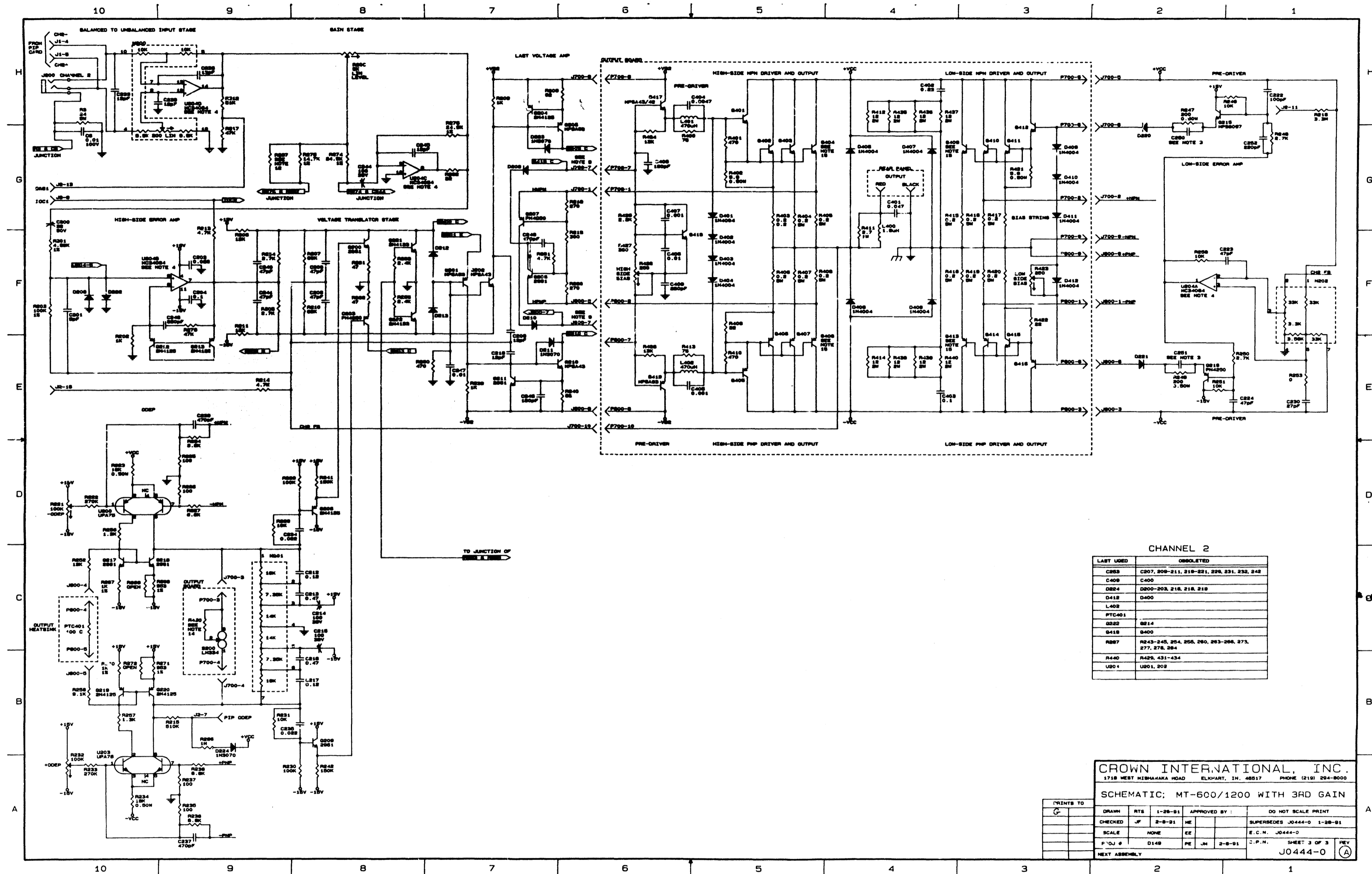
J10	J11
1 -CH2 BOOST SOURCE (AC)	1 -5VAC
2 -CH1 BOOST SOURCE (AC)	2 -5VAC
3 -SOURCE (AC)	3 -CENTER TAP
4 -SOURCE (AC)	4 -5VAC

**CROWN INTERNATIONAL, INC.**  
 1718 WEST HIGHWAY ROAD ELKHART, IN. 46517 PHONE (219) 294-8000

**SCHEMATIC: MT-600/1200 WITH 3RD GAIN**

PRINTS TO	
DRAWN	MTS 1-28-81
CHECKED	JF 2-9-81
SCALE	NONE
PROJ #	D181
NEXT ASSEMBLY	

APPROVED BY :	DO NOT SCALE PRINT
SUPERSEDES J0444-0 1-28-81	
E.C.H. J0444-0	
C.P.N. SHEET 2 OF 3	
J0444-0	REV (A)



CHANNEL 2

LAST USED	OBSOLETE
C823	C207, 209-211, 218-221, 229, 231, 232, 242
C409	C400
D224	D200-202, 216, 218, 219
D412	D400
L402	
PTC401	
Q222	Q214
Q418	Q400
R227	R243-245, 254, 255, 256, 263-266, 273, 277, 278, 284
R440	R429, 431-434
U204	U201, 202

CROWN INTERNATIONAL, INC.  
1718 WEST HISHAHARA ROAD ELKHART, IN. 46517 PHONE (219) 294-8000

SCHEMATIC; MT-600/1200 WITH 3RD GAIN

PRINTS TO	DRW	RTS	1-28-91	APPROVED BY:	DO NOT SCALE PRINT
C	JF	2-8-91	HE		SUPERSEDES J0444-0 1-28-91
			EE		E.C.N. J0444-0
			PE	JH	2-8-91
					C.P.N. SHEET 3 OF 3 REV
					J0444-0