

**SERVICE**

**MANUAL**

**PUBLIC ADDRESS POWER**

**AMPLIFIER**

**PA-9336**

**interM**

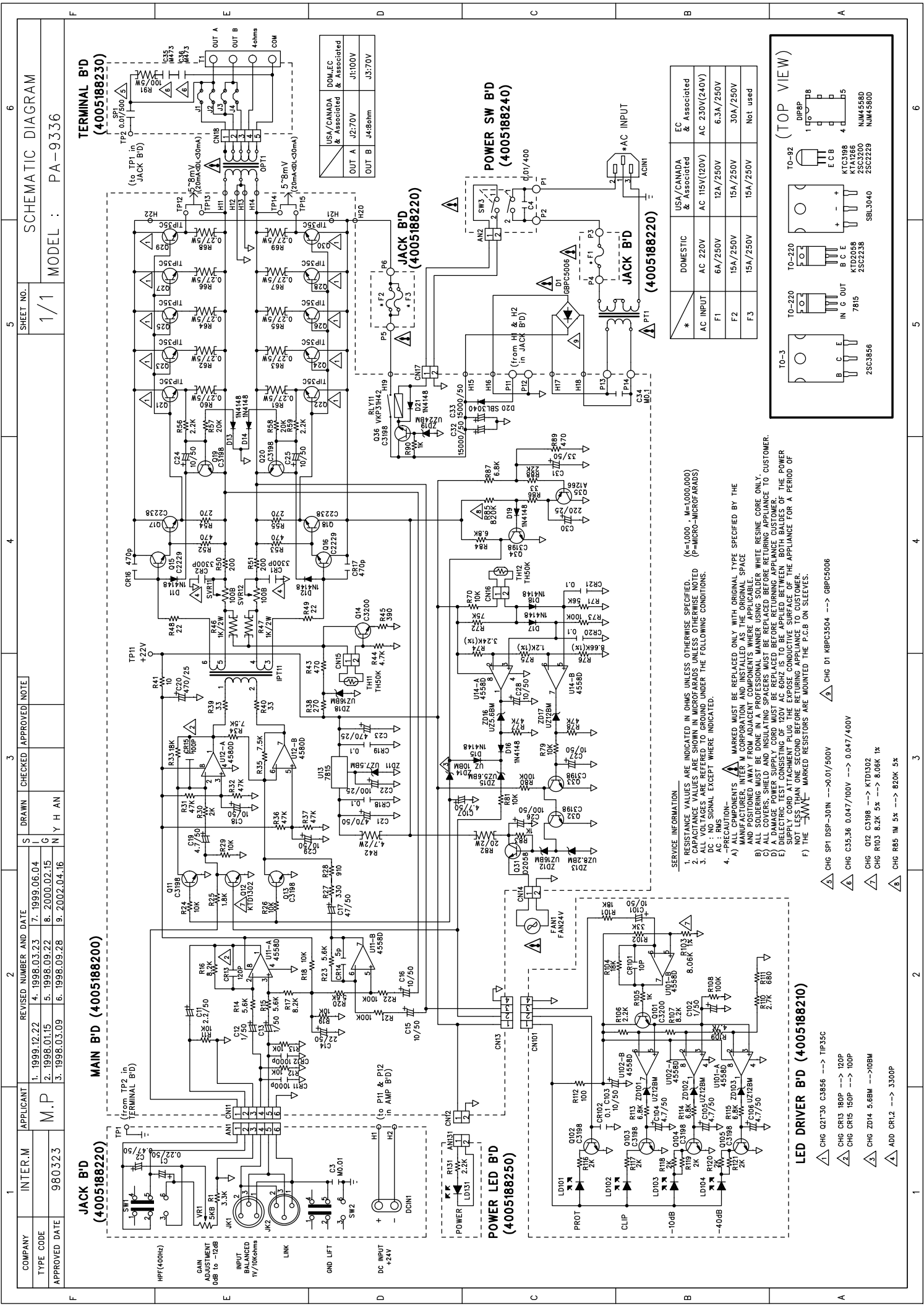
# ELECTRICAL PARTS LIST

Ref No.	Part No.	Description	Value
MAIN B'D (4005188200)			
Q11 Q13 Q19-20	2008606104-T	TR NPN KTC 3198Y	C3198
Q12	2008606104-T	TR NPN KTC 3198Y	KTD1302
Q35	2008606105-T	TR PNP KTA 1266Y	A1266
Q15-16	2008606107-T	TR NPN KTC 2229Y (KTC 3206Y)	C2229
Q14	2008606108-T	TR NPN KTC2240BL (KTC 3200BL)	C3200
Q31	2028406113	TR NPN KTC 3198Y	D2058
Q17-18	2028407118	TR NPN 2SC 2238Y	C2238
Q21-30	2028427998	TR 2SC 3856/WACC	TIP35C
D20	2058300997	DIODE SCHOTTKY SBL-3040PT	SBL3040
D11-19 D21	2058304100	DIODE 1N4148	1N4148
ZD11	2058501076	DIODE ZENER UZ-7.5BM	UZ7.5BM
ZD15-16	2058502056	DIODE ZENER UZ-5.6BM (5.4,5.8)	UZ5.6BM
ZD13	2058502082	DIODE ZENER 8.2BM (7.9,8.5)	UZ8.2BM
ZD17	2058502120	DIODE ZENER UZ-12BM(11.6,12.4)	UZ12BM
ZD12 ZD18	2058502160	DIODE ZENER UZ-16BM (15.6,16.9)	UZ16BM
ZD19	2058502240	DIODE ZENER UZ-24BM (23.1,25.5)	UZ24BM
U11 U14	2118010590	IC NJM4558D JRC	4558D
U12	2118010932	IC NJM 4556D	4580D
U13	2128610900	IC KA7815 COMMON	7815
TH11-12	2438209031	THERMISTOR YSG-503J L=100	TH50K
IPT11	2808098300	TRANSFORMER INPUT (PA-9324)	IPT
OPT1	2818088900	TRANSFORMER OUTPUT PA-9336	OUTPUT TRANS
R75	3003120953	RES CF 1.2K 1/5W F N	1.2K(1%)
R74	3003324953	RES CF 3.24K 1/5W F N	3.24K(1%)
R76	3003866953	RES CF 8.66K 1/5W F N	8.66K(1%)
R41	3009100973	RES CF 10 1/5W J N	10
R83 R90	3009102973	RES CF 1K 1/5W J N	1K
R11-13 R18-19 R24	3009103973	RES CF 10K 1/5W J N	10K
R26 R29 R70 R79 R81			
R21-22 R73 R80	3009104973	RES CF 100K 1/5W J N	100K
R85	3009105973	RES CF 1M 1/5W J N	820K
R25	3009182973	RES CF 1.8K 1/5W J N	1.8K
R33	3009183973	RES CF 18K 1/5W J N	18K
R50-51	3009201973	RES CF 200 1/5W J N	200
R30	3009202973	RES CF 2K 1/5W J N	2K
R57-58	3009203973	RES CF 20K 1/5W J N	20K
R48-49	3009220973	RES CF 22 1/5W J N	22
R56 R59	3009222973	RES CF 2.2K 1/5W J N	2.2K
R88	3009223973	RES CF 22K 1/5W J N	22K
R38 R54-55	3009271973	RES CF 270 1/5W J N	270

R39-40 R86	3009330973	RES CF 33 1/5W J N	33
R27	3009331973	RES CF 330 1/5W J N	330
R45	3009391973	RES CF 390 1/5W J N	390
R43 R52-53 R89	3009471973	RES CF 470 1/5W J N	470
R44	3009472973	RES CF 4.7K 1/5W J N	4.7K
R31-32 R36-37	3009473973	RES CF 47K 1/5W J N	47K
R77-78			
R20 R23	3009562973	RES CF 5.6K 1/5W J N	5.6K
R71	3009563973	RES CF 56K 1/5W J N	56K
R14-15	3009569973	RES CF 5.6K 1/5W J N	5.6K
R84 R87	3009682973	RES CF 6.8K 1/5W J N	6.8K
R34-35	3009752973	RES CF 7.5K 1/5W J N	7.5K
R72	3009753973	RES CF 75K 1/5W J N	75K
R17	3009822973	RES CF 8.2K 1/5W J N	8.2K
R16	3009829973	RES CF 8.2K 1/5W J N	8.2K
R28	3009911973	RES CF 910 1/5W J N	910
R46-47	3039102572-F	RES MO 1K 2W J N	1K/2W
R82	3039200572-F	RES MO 20 2W J N	20/2W
R42	3039479572-F	RES MO 4.7 2W J N	4.7/2W
R60-69	3059278783	RES CE 0.27 5W J T	0.27/5W
SVR11-12	3248310120	RES SEMI CS 100B 10/5	100B
C20 C23	3408247149	CAP AF SG 470UF 25V	470/25
C21	3408247171	CAP RSA 470UF 50V SNAP 13P	470/50
C15-16 C18 C24-25	3409210071-T	CAP AF RSG 10UF 50V 5P	10/50
C27-29			
C22	3409210141-T	CAP AF RSG 100UF 25V 6P	100/25
C26	3409210171-T	CAP AF RSG 100UF 50V 8P	100/50
C12-13	3409210971-T	CAP AF RSG 1UF 50V 5P	1/50
C14	3409222071-T	CAP AF RSG 22UF 50V 5P	22/50
C30	3409222141-T	CAP AF RSG 220UF 25V J 8P	220/25
C11	3409222971-T	CAP AF RSG 2.2UF 50V 5P	2.2/50
C31	3409233071-T	CAP AF RSG 33UF 50V 6P	33/50
C17	3409247071-T	CAP AF RSG 47UF 50V 6P	47/50
C19 C107	3409247971-T	CAP AF RSG 4.7UF 50V 5P	4.7/50
C32-33	3419515379	CAP E LPW 15000UF 50V JAMICON	15000/50
CR15	3509151231-A	CAP CE B 150PF 50V K AXIAL	100P
CR13	3509181231-A	CAP CE B 180PF 50V K AXIAL	120P
CR16-17	3509471231-A	CAP CE B 470PF 50V K AXIAL	470p
CR14	3529050311-A	CAP CE SL 5P 50V M AXIAL	5p
CR11-12	3539102231-A	CAP CE YP 1000PF 50V K AXIAL	1000p
CR18-21	3539104531-A	CAP CE YF 100000PF 50V Z AXIAL	0.1
C34	3609104122-T	CAP MA 0.1UF 100V J SMALL	M0.1
CN12	4428595002	5267-02A/2.5MM/MH5264	CON WAF 2P
CN14-17	4428595002	5267-02A/2.5MM/MH5264	CON WAF 2P

CN13	4428598304	WAFER LW-0640-4P	CON WAF 4P
CN11	4428598306	CONNECTOR WAFER LW-0640-6P	CON WAF 6P
P11-12	4465998210	TERMINAL (250) PCB TAB	250 TAP
P13-14	4465998210	TERMINAL (250) PCB TAB	250 TAP
TP11-15	4678699410	CNT PLUG 1P	CNT1P
RLY11	5528009810	RELAY VKP-31H42	VKP31H42
FAN1	7308998310	FAN (F9225M24B)	FAN24V
LED DRIVER B'D (4005188210)			
Q102-105	2008606104-T	TR NPN KTC 3198Y	C3198
Q101	2008606108-T	TR NPN KTC2240BL (KTC 3200BL)	C3200
ZD101-103	2058502120	DIODE ZENER UZ-12BM(11.6,12.4)	UZ12BM
U101-102	2118010590	IC NJM4558D JRC	4558D
LD101-102	2308257222-T	SLR 54URF 20	LED RED2
LD103-104	2308257262-T	SLR 54GGF 20	LED GREEN
R112	3009101973	RES CF 100 1/5W J N	100
R105	3009102973	RES CF 1K 1/5W J N	1K
R108	3009104973	RES CF 100K 1/5W J N	100K
R101 R104	3009183973	RES CF 18K 1/5W J N	18K
R116-121	3009202973	RES CF 2K 1/5W J N	2K
R106	3009222973	RES CF 2.2K 1/5W J N	2.2K
R110	3009272973	RES CF 2.7K 1/5W J N	2.7K
R102	3009333973	RES CF 33K 1/5W J N	33K
R109	3009472973	RES CF 4.7K 1/5W J N	4.7K
R111	3009681973	RES CF 680 1/5W J N	680
R113-115	3009682973	RES CF 6.8K 1/5W J N	6.8K
R103	3009822973	RES CF 8.2K 1/5W J N	8.06K 1%
R107	3009822973	RES CF 8.2K 1/5W J N	8.2K
C101 C103	3409210071-T	CAP AF RSG 10UF 50V 5P	10/50
C102	3409210971-T	CAP AF RSG 1UF 50V 5P	1/50
C104-106	3409247971-T	CAP AF RSG 4.7UF 50V 5P	4.7/50
CR101	3529100311-A	CAP CE SL 10PF 50V J AXIAL	10P
CR102	3539104531-A	CAP CE YF 100000PF 50V Z AXIAL	0.1
CN101	4428598704	CONNECTOR WAFER LW-0640-4P	CON WAF 4P
JACK B'D (4005188220)			
R1	3009332973	RES CF 3.3K 1/5W J N	3.3K
VR1	3228078510	VR RK09K1110203 52B (ROM81)	5KB
C1	3409222871-T	CAP AF RSG 0.22UF 50V 5P	0.22/50
C2	3409247871-T	CAP AF RSG 0.47UF 50V 5P	0.47/50
C3	3609103120-T	CAP MA 0.01UF 100V	M0.01
AN1	4355818411	CON ASS'Y 6P	ASS'Y 6P
JK2	4408194610	XLR JACK (M) (E403A0090N)	E403A0090N
DCIN1	4438094610	DC TERMINAL 2P	TERMINAL/DC
JK1	4438193710	XLR JACK(F) 3P(E303A0070N)	E303A0070N
SW1-2	4618001110	SW SLIDE SSP322SB011(SSH78)	SLIDE SW

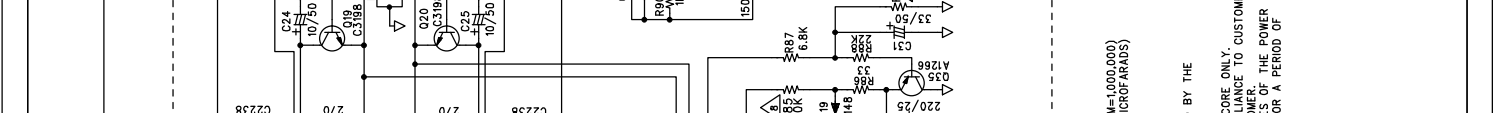
TP1	4678699411	CNT PLUG 1P	CNT PLUG 1P
P5-6	4465998210	TERMINAL (250) PCB TAB	250 TAP
F2-3	5508424230	FUSE TS 31.8MM 15A/250V KS	15A/250V
TERMIANL B'D (4005188230)			
J1-4		JUMPER	
C35-36		CAP MA 0.047UF 400V	M473
OPT1	2818088900	TRANSFORMER OUTPUT PA-9336	OUTPUT TRANS
R91	3059101776	RES WWCE 100 5W J T	100/5W
CN18	4355923805	WAFER LW(3.96) 5P JIS	CON WAF 5P
T1	4465997704	SCREW TRERMINAL 4P	TRERMINAL 4P
TP2	4678699411	CNT PLUG 1P	CNT PLUG 1P
SP1	5410000300	SURGE PROTECTOR DSP-301N	0.01/500
POWER SW B'D (4005188240)			
C4	3549103107	CAP CE DE7150F 223MVAI	0.01/400
AN2	4355818817	CON ASS'Y 2P	CON ASS'Y 2P
SW3	4648099010	POWER SWITCH ESB-998	ESB-998
POWER LED B'D (4005188250)			
LD131	2308252222-T	SLR-54URA 49	LED RED1
R131	3009222973	RES CF 2.2K 1/5W J N	2.2K
AN131	4353986914	CON ASS'Y 2P	CON ASS'Y 2P



COMPANY	INTER-M	APPLICANT	REVISED NUMBER AND DATE	S	DRAWN	CHECKED	APPROVED	NOTE
		M.P	1. 1999.12.22 4. 1998.03.23 5. 1998.09.22 6. 2000.02.15 7. 1999.06.04 8. 2000.02.15 9. 2002.04.16		N	Y	H	A
			3. 1998.03.09 6. 1998.09.28 9. 2002.04.16					

USA/CANADA & Associated	DOM. EC	JAPAN
OUT A	J2:70V	J1:100V
OUT B	J4:8ohm	J3:70V

USA/CANADA & Associated	EC Associated
DOMESTIC	AC 220V
F1	AC 115V(120V)
F2	AC 230V(240V)
F3	12A/250V
	6.3A/250V
	15A/250V
	30A/250V
	15A/250V
	15A/250V
	Not used



HPF(400Hz)  
GAIN ADJUSTMENT  
0dB to -20dB  
INPUT BALANCED  
1V/100ohms  
LINK  
GND LFT  
DC INPUT  
+24V

HPF(400Hz)  
GAIN ADJUSTMENT  
0dB to -20dB  
INPUT BALANCED  
1V/100ohms  
LINK  
GND LFT  
DC INPUT  
+24V

POWER LED B'D (4005188250)  
POWER SW B'D (4005188240)  
JACK B'D (4005188220)

LED DRIVER B'D (4005188210)  
JACK B'D (4005188220)  
POWER SW B'D (4005188240)  
JACK B'D (4005188220)

TERMINAL B'D (4005188230)

RESISTANCE VALUES ARE INDICATED IN OHMS UNLESS OTHERWISE SPECIFIED.  
CAPACITANCE VALUES ARE SHOWN IN MICROFARADS UNLESS OTHERWISE NOTED.  
ALL VOLTAGES ARE REFERRED TO GROUND UNDER THE FOLLOWING CONDITIONS.  
DC : NO SIGNAL EXCEPT WHERE INDICATED.  
AC : PRECAUTION-

MARKED MUST BE REPLACED ONLY WITH ORIGINAL TYPE SPECIFIED BY THE MANUFACTURER, INTER M CORPORATION AND INSTALLED AS THE ORIGINAL SPACE AND POSITIONED AWAY FROM ADJACENT COMPONENTS WHERE APPLICABLE.  
ALL SOLDERING MUST BE DONE USING LEAD-FREE SOLDER. WHITE REFINE CORE ONLY.  
ALL COILS SHOULD BE DESIGNED TO BE REPLACED BEFORE RETURNING APPLIANCE TO CUSTOMER.  
DIELECTRIC TEST CONSISTING OF 120V AC 60HZ IS TO BE APPLIED BETWEEN BOTH BALDES OF THE POWER SUPPLY CORD ATTACHMENT PLUG THE EXPOSE CONDUCTIVE SURFACE OF THE APPLIANCE FOR A PERIOD OF NOT LESS THAN ONE SECOND BEFORE RETURNING APPLIANCE TO CUSTOMER.  
THE 3WV MARKED RESISTORS ARE MOUNTED THE P1.0 ON SOLDER.

RESISTANCE VALUES ARE INDICATED IN OHMS UNLESS OTHERWISE SPECIFIED.  
CAPACITANCE VALUES ARE SHOWN IN MICROFARADS UNLESS OTHERWISE NOTED.  
ALL VOLTAGES ARE REFERRED TO GROUND UNDER THE FOLLOWING CONDITIONS.  
DC : NO SIGNAL EXCEPT WHERE INDICATED.  
AC : PRECAUTION-

MARKED MUST BE REPLACED ONLY WITH ORIGINAL TYPE SPECIFIED BY THE MANUFACTURER, INTER M CORPORATION AND INSTALLED AS THE ORIGINAL SPACE AND POSITIONED AWAY FROM ADJACENT COMPONENTS WHERE APPLICABLE.  
ALL SOLDERING MUST BE DONE USING LEAD-FREE SOLDER. WHITE REFINE CORE ONLY.  
ALL COILS SHOULD BE DESIGNED TO BE REPLACED BEFORE RETURNING APPLIANCE TO CUSTOMER.  
DIELECTRIC TEST CONSISTING OF 120V AC 60HZ IS TO BE APPLIED BETWEEN BOTH BALDES OF THE POWER SUPPLY CORD ATTACHMENT PLUG THE EXPOSE CONDUCTIVE SURFACE OF THE APPLIANCE FOR A PERIOD OF NOT LESS THAN ONE SECOND BEFORE RETURNING APPLIANCE TO CUSTOMER.  
THE 3WV MARKED RESISTORS ARE MOUNTED THE P1.0 ON SOLDER.

RESISTANCE VALUES ARE INDICATED IN OHMS UNLESS OTHERWISE SPECIFIED.  
CAPACITANCE VALUES ARE SHOWN IN MICROFARADS UNLESS OTHERWISE NOTED.  
ALL VOLTAGES ARE REFERRED TO GROUND UNDER THE FOLLOWING CONDITIONS.  
DC : NO SIGNAL EXCEPT WHERE INDICATED.  
AC : PRECAUTION-

MARKED MUST BE REPLACED ONLY WITH ORIGINAL TYPE SPECIFIED BY THE MANUFACTURER, INTER M CORPORATION AND INSTALLED AS THE ORIGINAL SPACE AND POSITIONED AWAY FROM ADJACENT COMPONENTS WHERE APPLICABLE.  
ALL SOLDERING MUST BE DONE USING LEAD-FREE SOLDER. WHITE REFINE CORE ONLY.  
ALL COILS SHOULD BE DESIGNED TO BE REPLACED BEFORE RETURNING APPLIANCE TO CUSTOMER.  
DIELECTRIC TEST CONSISTING OF 120V AC 60HZ IS TO BE APPLIED BETWEEN BOTH BALDES OF THE POWER SUPPLY CORD ATTACHMENT PLUG THE EXPOSE CONDUCTIVE SURFACE OF THE APPLIANCE FOR A PERIOD OF NOT LESS THAN ONE SECOND BEFORE RETURNING APPLIANCE TO CUSTOMER.  
THE 3WV MARKED RESISTORS ARE MOUNTED THE P1.0 ON SOLDER.

RESISTANCE VALUES ARE INDICATED IN OHMS UNLESS OTHERWISE SPECIFIED.  
CAPACITANCE VALUES ARE SHOWN IN MICROFARADS UNLESS OTHERWISE NOTED.  
ALL VOLTAGES ARE REFERRED TO GROUND UNDER THE FOLLOWING CONDITIONS.  
DC : NO SIGNAL EXCEPT WHERE INDICATED.  
AC : PRECAUTION-

MARKED MUST BE REPLACED ONLY WITH ORIGINAL TYPE SPECIFIED BY THE MANUFACTURER, INTER M CORPORATION AND INSTALLED AS THE ORIGINAL SPACE AND POSITIONED AWAY FROM ADJACENT COMPONENTS WHERE APPLICABLE.  
ALL SOLDERING MUST BE DONE USING LEAD-FREE SOLDER. WHITE REFINE CORE ONLY.  
ALL COILS SHOULD BE DESIGNED TO BE REPLACED BEFORE RETURNING APPLIANCE TO CUSTOMER.  
DIELECTRIC TEST CONSISTING OF 120V AC 60HZ IS TO BE APPLIED BETWEEN BOTH BALDES OF THE POWER SUPPLY CORD ATTACHMENT PLUG THE EXPOSE CONDUCTIVE SURFACE OF THE APPLIANCE FOR A PERIOD OF NOT LESS THAN ONE SECOND BEFORE RETURNING APPLIANCE TO CUSTOMER.  
THE 3WV MARKED RESISTORS ARE MOUNTED THE P1.0 ON SOLDER.

**interM**

[www.inter-m.com](http://www.inter-m.com)  
MADE IN KOREA  
2003.6