

# I/O and FX options



## UM-8PO Universal Analog, AES/EBU and ADAT® Output Module

- Compatible with Eclipse, Sy48 and Sy80
- Suitable for DioCore and local Mix Rack
- Analog, AES/EBU and ADAT® on one module
- Analog or AES switchable in pairs
- Additional Tos-Link fibre optic ADAT® connector
- 8 balanced XLR outputs

### Extensive onboard processing

- 31-band graphic EQ
- 8-band parametric EQ
- Compressor/Limiter
- Gate/Expander
- Delay
- Level and Phase



## FM-8VB 8 In/8 Out VB-Audio Effects Module

- Compatible with Eclipse, Sy48 and Sy80
- 32 effects engines (8x4)
- 4 engines between each I/O
- User defined stereo or mono engines
- Routing to input inserts, mixbusses or aux feed



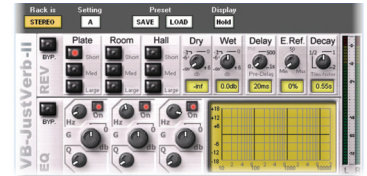
### Modulated delay and phasing

This plug-in allows different variations of Chorus, Flanger and Modulation



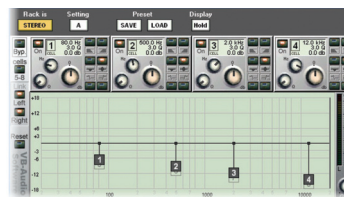
### DeEsser / Ducker

A DeEsser with a BP and HPF filter, will be switchable to a Ducker on a next release



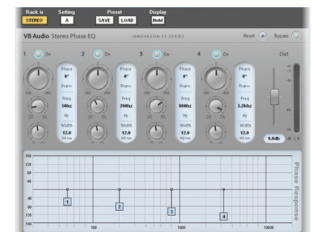
### Just-Verb<sup>2</sup>

The Reverb using the famous algorithms of the VB-Audio Aphro reverb



### EQ-Pro-G8

8 band full parametric EQ each as Parametric, Shelf, Notch, HPF or LPF filter



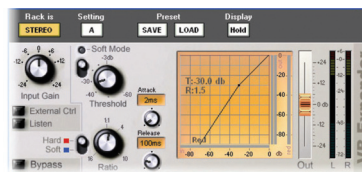
### Stereo Phase Eq

This unique plug-in allows to adjust the phase (+/-180°) at 4 different frequencies



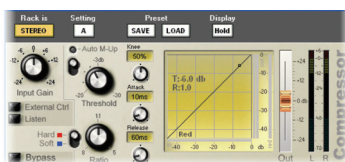
### C-Limiter

A Brick Wall Limiter, generating a nice distortion for the high levels



### Expander

An Expander with a Hard and Soft mode behaviour



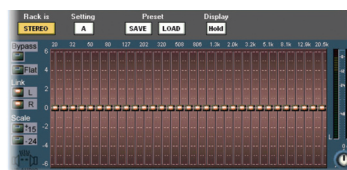
### Compressor

A very efficient Compressor, with a Hard or Soft behaviour



### MultiTap Delay

A Multitap Delay allowing all variations of Echoes, Ping-Pong, ...etc A tap Tempo is integrated. Each Tap has its Level and Panoramic adjustable.



### GEQ-31

A complete Graphic Eq offering several dB scales

# DioMadiES

## EtherSound to MADI Media Converter

- Compatible with Eclipse, Sy48 and Sy80
- Stand alone unit 1U
- Redundant power supply
- MADI: 56 or 64 channel In/Out
- BNC coax or ST fibre optic connectors
- EtherSound 64 channel bidirectional
- RJ45 EtherCon connectors
- Internal Clock 44.1/48 kHz
- Output sync to internal, external, MADI or ES
- Matrix configuration via network manager software



DioMadiES can be used with all equipment using EtherSound or MADI to transport and convert digital audio.

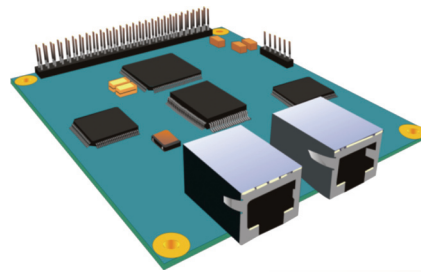
**Applications:** PC Audio Cards, Multitrack Recorder, Broadcast



# DioAv

## Dio Module for AVIOM A-Net

- Compatible with Eclipse, Sy48 and Sy80
- Supplying two 16-channel A-Net networks
- 2x RJ45 connector
- Max. 150 m CAT5 cable
- Mounted on the DSP board
- 24 Bit / 44.1 – 48 kHz
- Stereo link per channel
- 0,880 ms latency



Assign any audio bus or direct output to any of the two 16-channel A-Net busses.

**Applications:** Individual 16-channel monitor mix for each band member provided by Aviom's personal mixers.

# Dio8Out

## EtherSound D/A Converter

- 8 analog balanced XLR outputs
- Local or remote EtherSound channel attribution
- Sync to internal or EtherSound clock
- Dual color level LED per channel
- Dynamic range > 104 dB
- 2 EtherCon network connectors
- 4x GPIO opto/relay contacts
- 1x RS232 serial port
- Simple and easy setup

Select any 8 out of the 64 distributed network channels and send the balanced audio signal to PA systems, amplifiers, In Ear Monitor systems or other analog audio devices. Multiple Dio8Out can be used in an EtherSound network.



**FRANCE**  
Innovason • Zone du Kenyah • 56400 Plougoumelen  
Phone +33 297 243 434 • info@innovason.com  
www.innovason.com

**GERMANY**  
Lawo AG • Am Oberwald 8 • 76437 Rastatt  
Phone +49 7222 1002 0 • innovason@lawo.de  
www.innovason.com