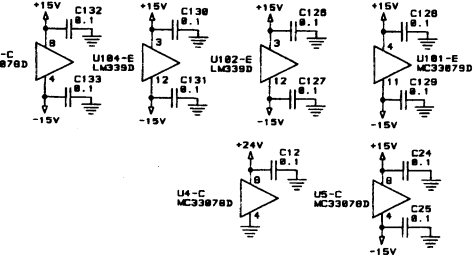
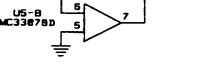


BYPASS CAPACITORS



UNUSED ELEMENTS



- NOTES:
- 1. UNLESS OTHERWISE SPECIFIED: ALL RESISTORS ARE IN OHMS. 1/10W, 5%.
 - 2. UNLESS OTHERWISE SPECIFIED: ALL CAPACITORS ARE IN MICROFARADS.

B

7

6

5

4

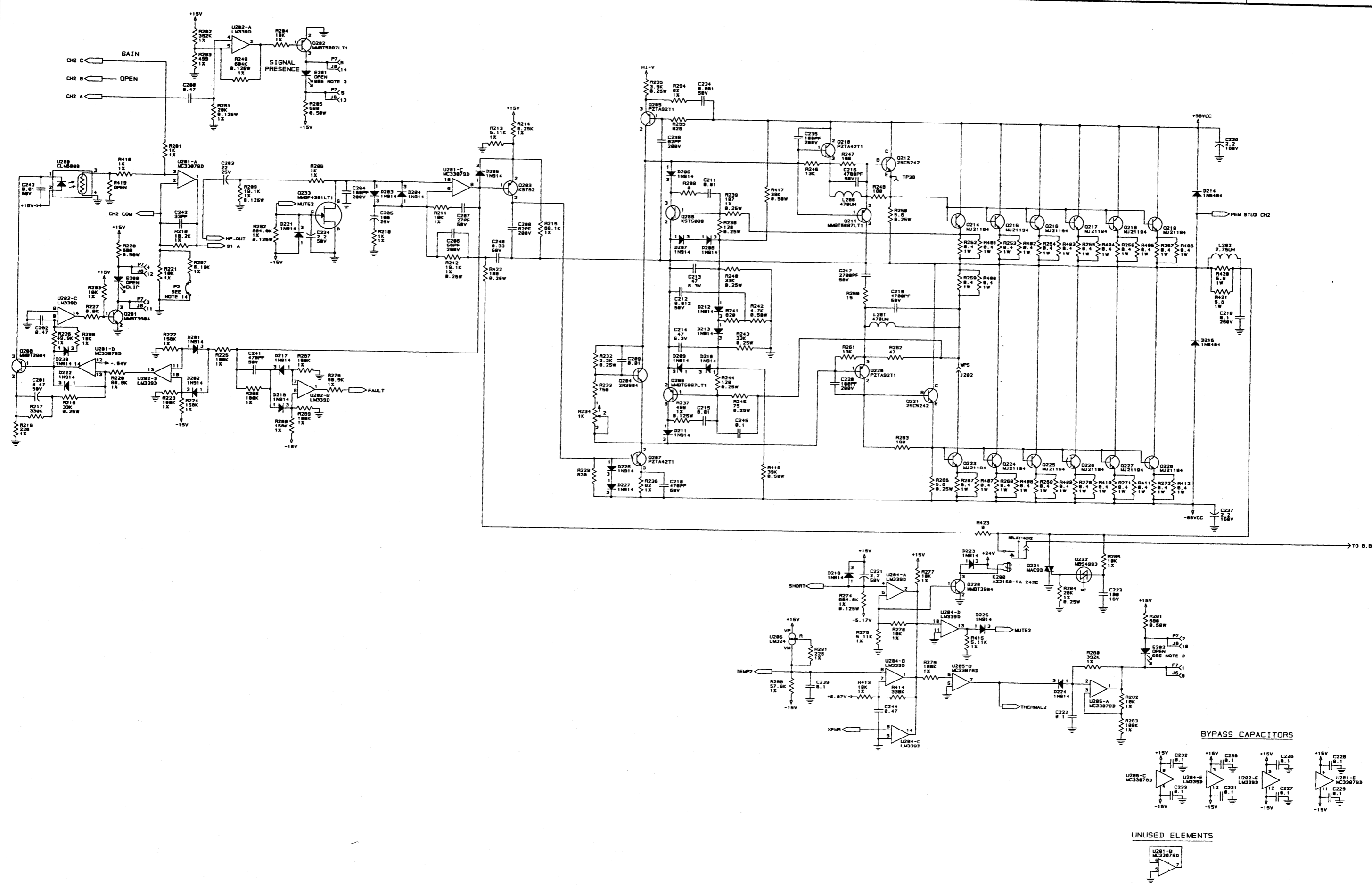
3

D

C

B

A



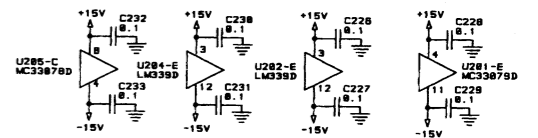
D

C

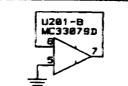
B

A

BYPASS CAPACITORS



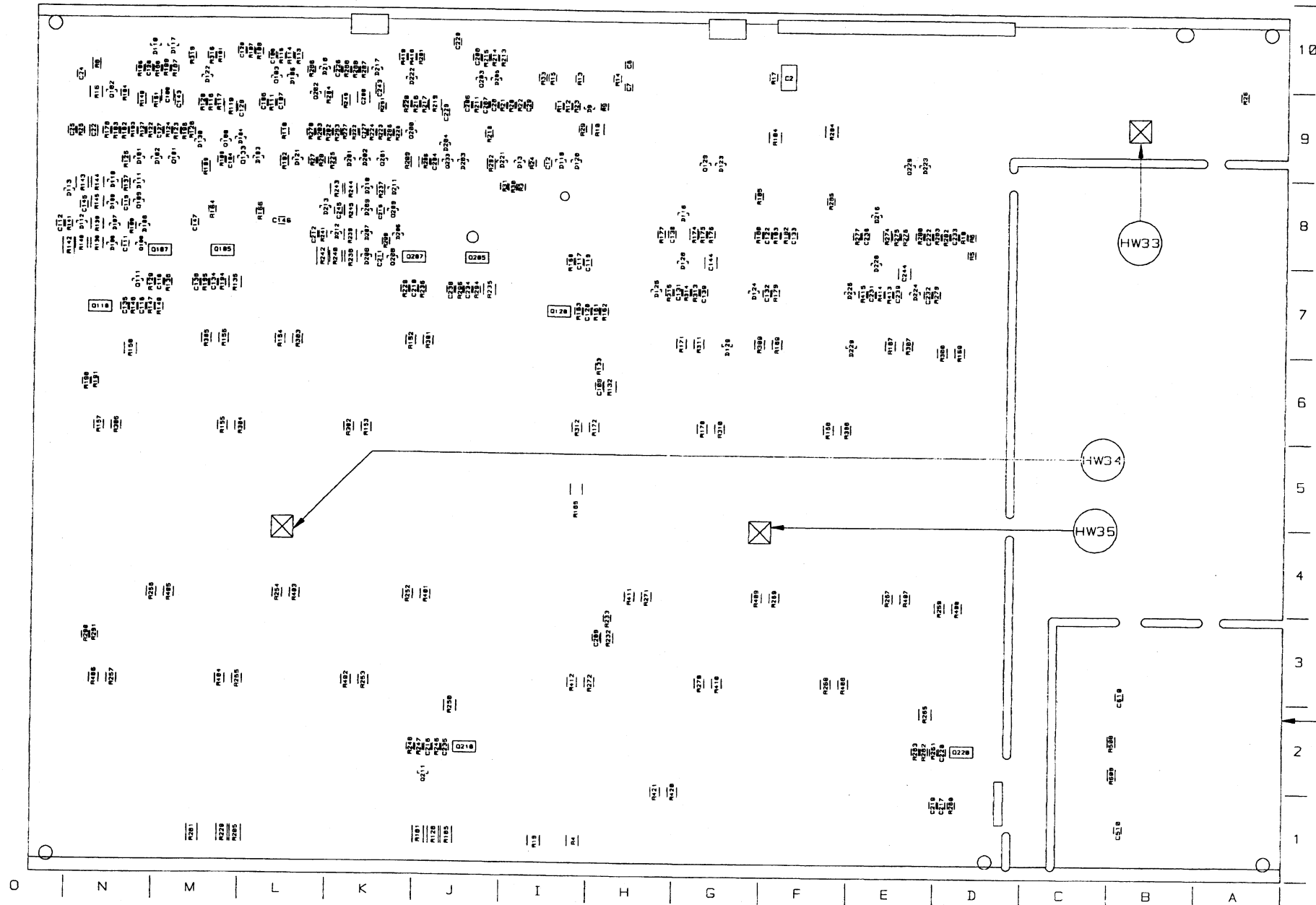
UNUSED ELEMENTS



4

3

2

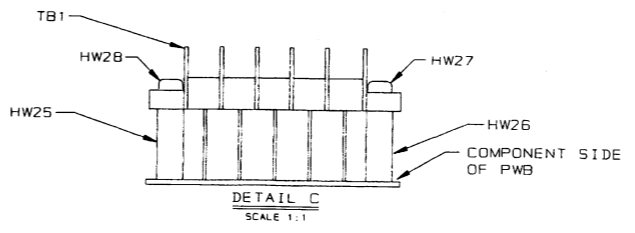
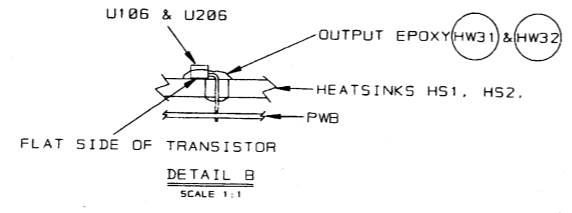
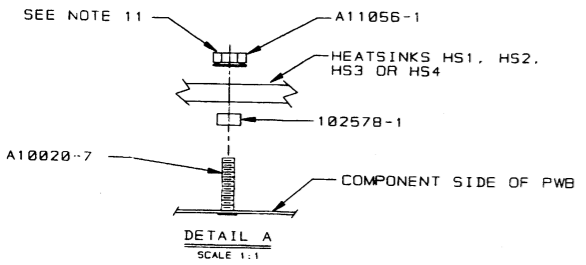
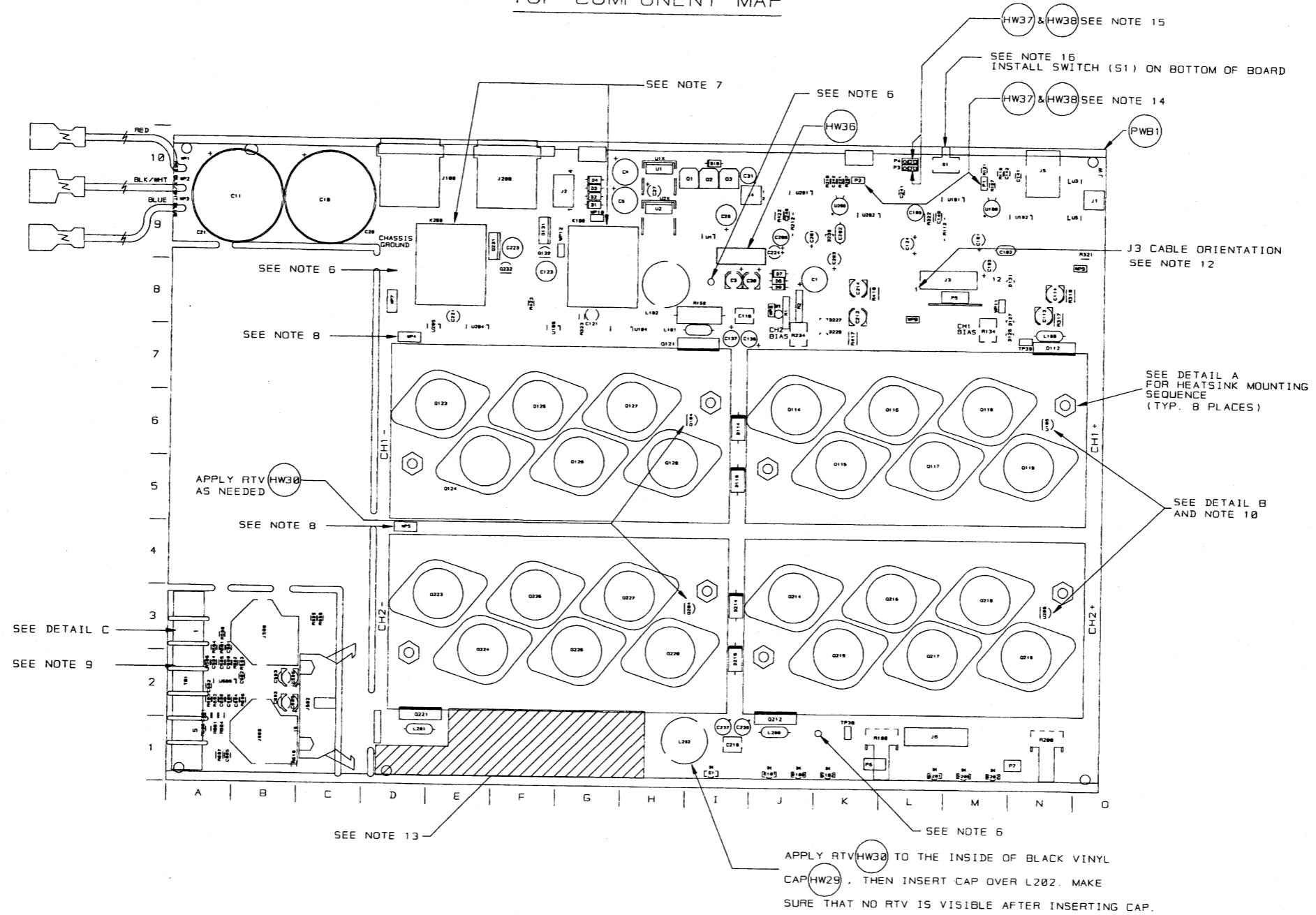


UNCONTROLLED
 UNLESS OTHERWISE MARKED IN RED INK BY CM AS A CONTROLLED COPY. COPIES OF THESE DOCUMENTS INCLUDING ASSOCIATED ELECTRONIC REPRODUCTIONS ARE FOR REFERENCE ONLY.

THESE DRAWINGS AND SPECIFICATIONS ARE THE PROPERTY OF CROWN INTERNATIONAL, INC. AND SHALL NOT BE REPRODUCED, COPIED, OR USED AS THE BASIS FOR THE MANUFACTURE OR SALE OF APPARATUS OR DEVICES WITHOUT PERMISSION.

SIZE	DWG NO.	REV
C	131934-1	2
SCALE	PROJ. NO.	SHEET
NONE	UNIFORM	2 OF 2

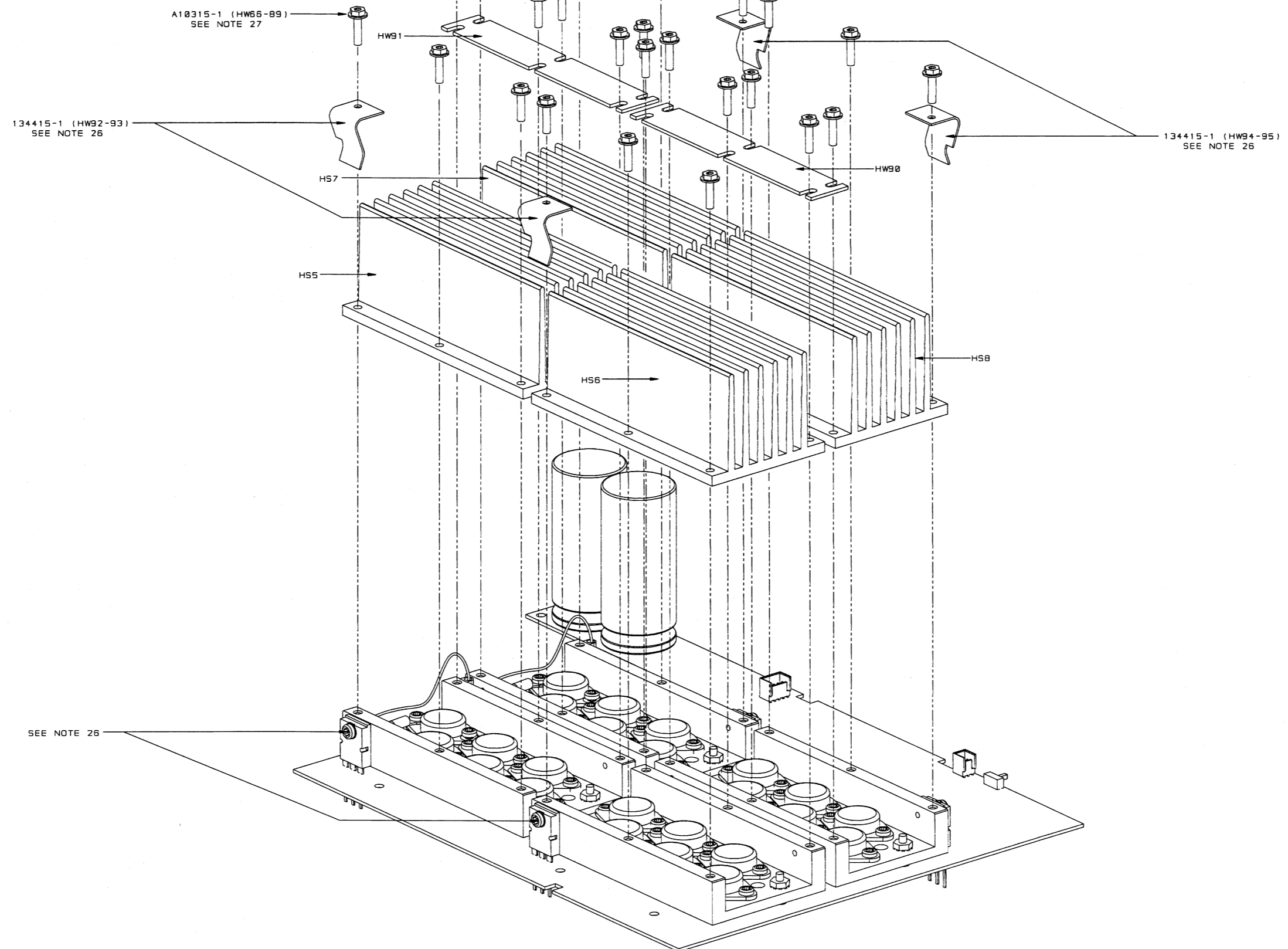
TOP COMPONENT MAP



8 7 6 5 4 3 2 1

D

D



C

C

B

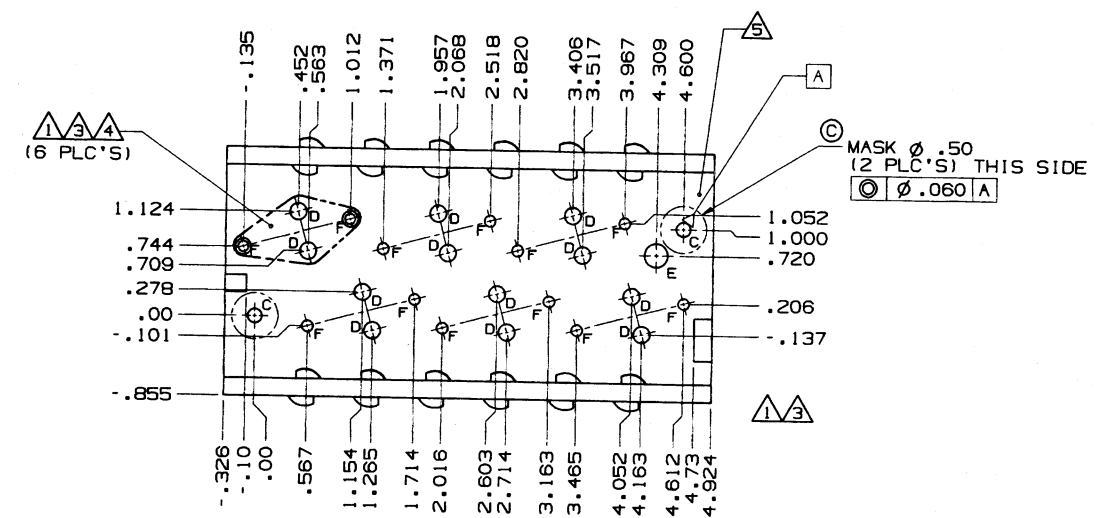
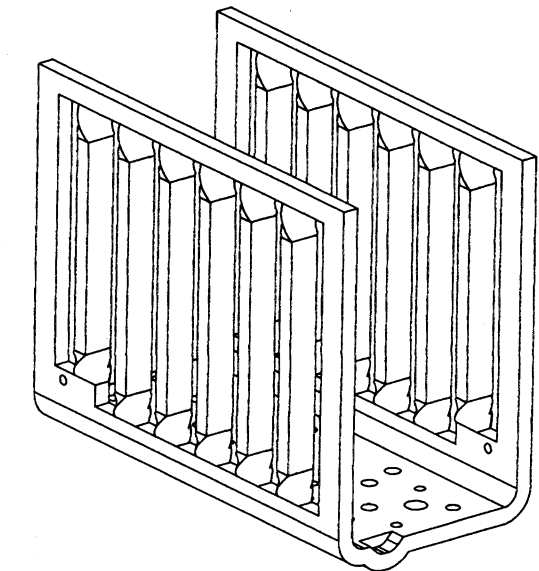
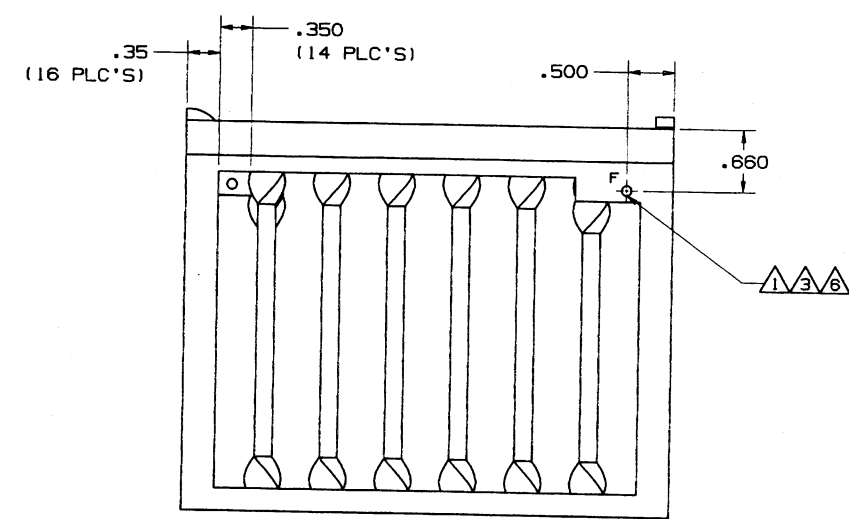
B

A

A

FIG. 2

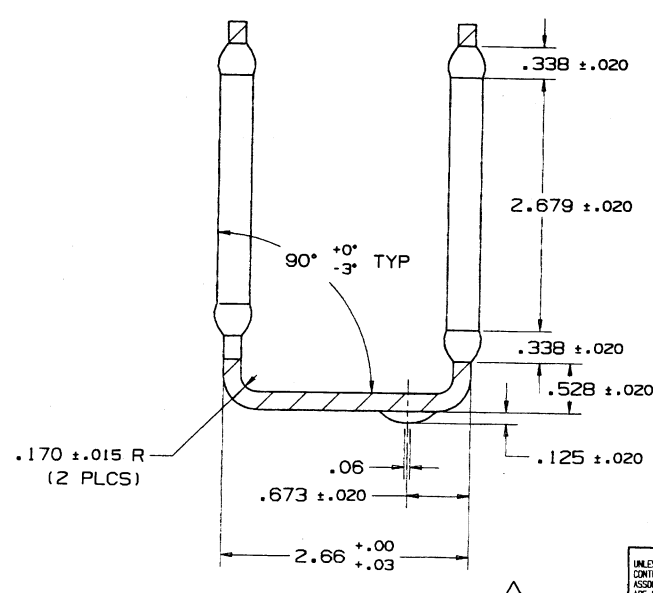
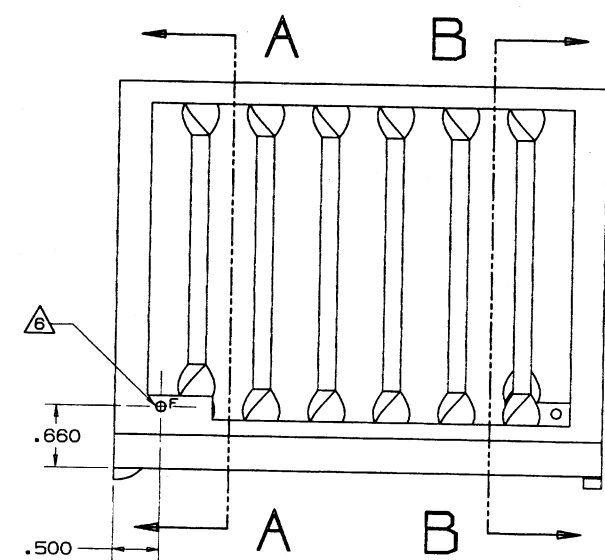
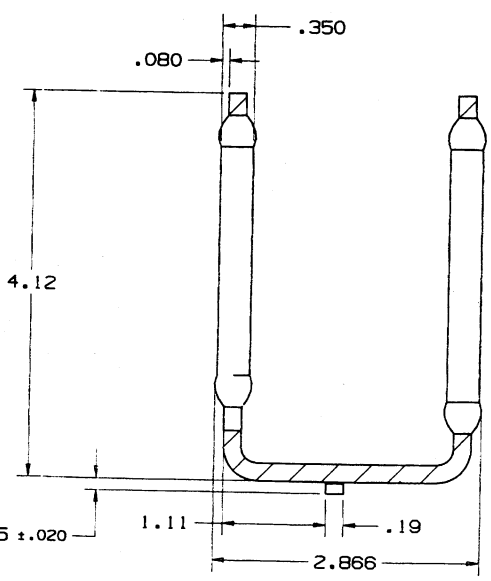
REVISIONS					APPROVALS			
E.C.N.	ZONE	REV	DESCRIPTION	DATE	DWN	CHK	CM	PE
		①	INITIAL RELEASE FOR PROTOTYPE	12-8-00	JOW			
	A7, A4	②	ADD 2.866 AND 90° DIMENSION	2/2/01	TPM			



MATERIAL:
.190 ALUMINUM (3003-H14)

HOLE SIZES:
 A = .172 Ø +.003 -.000 - - - 2 HOLES
 B = .122 Ø +.001 -.004 - - - 10 HOLES
 C = .155 Ø - - - - - 2 HOLES
 D = .178 Ø - - - - - 12 HOLES
 E = .250 - - - - - 1 HOLE
 F = .108 Ø +.001 -.002 - - - 2 HOLES

- NOTES:
- ① DIMENSIONS OR NOTES DENOTED ARE CRITICAL.
 - ② DIMENSIONS ARE FOR LANCES LOCATED ABOVE (2) "F" HOLES AS SHOWN IN FRONT & BACK VIEWS.
 - ③ "B & F" HOLES MUST HAVE THE DIA. HELD, WITHIN TOLERANCE, FOR A MINIMUM OF 70% MATERIAL THICKNESS.
 - ④ IN THIS AREA, FLATNESS TO BE HELD UNDER 2 MILS TOTAL INDICATOR READING. A MAXIMUM OF FIVE (5) ALLOWABLE CRATERS OF .090 L MAX. x .045 W MAX. x .030 DP. MAX.
 - ⑤ ALL CIRCULAR HOLES MUST BE FLUSH FROM THIS SIDE.
 - ⑥ DUE TO PUNCH ENTRY SIDE, (2) "F" HOLES MUST BE DEBURRED ON SIDES SHOWN.
 - 7) PART TO BE DEBURRED WITH EXCEPTION OF (10) "B" HOLES REPRESENTED IN SECTION B-B & (2) "F" HOLES REPRESENTED IN SECTION C-C.
 - 8) WHEN GAGING HOLES AFTER DEBURRING, REMOVE ANY BURR FROM INSIDE OF HOLES.



DISTRIBUTION	DWN	JOW	12-8-00	 1718 WEST WISAWAKA RD. ELKHART, IN 46517 PHONE (219) 294-0200 WWW.CROWNINTL.COM
ND	CHK			
CROWN/MD458	CM			TITLE
DWG 131849-1.PRT	PE			HEAT SINK, JBL CJ2000
TOLERANCE UNLESS				

UNCONTROLLED
UNLESS OTHERWISE MARKED IN RED INK BY CM AS A CONTROLLED COPY. COPIES OF THESE DOCUMENTS AND ASSOCIATED ELECTRONIC FILES ARE UNCONTROLLED AND ARE NOT APPROVED FOR USE.


REVISION HISTORY

E.C.N.	REV	DESCRIPTION	DATE	APPROVED			
				DWN	CHK	CM	PE
01N0569	A	PRODUCTION RELEASE	05-10-01	TRW	JUM	MMG	JK

UNLESS OTHERWISE SPECIFIED, THIS PRINTED WIRING ASSEMBLY SHALL MEET THE SPECIFICATION DESCRIBED IN IPC-A-610 CLASS 2 STANDARDS.

NOTES:

1. PRINTED WIRING BOARD PART NUMBER 132158-2.
2. SWITCHES S1 AND S2 MUST BE PLACED IN THE ORIENTATION SHOWN ON THE COMPONENT MAP WITH THE CENTER RIDGE ON TOP.
3. ALL LEADS SHALL BE TRIMMED TO 0.093" OR LESS.
4. POSITION COMPONENTS AS SHOWN ON COMPONENT MAPS.
5. THE PRINTED WIRING ASSEMBLY PART NUMBER FOR THIS ASSEMBLY SHALL BE MARKED ON THE PRINTED WIRING BOARD AND SHALL BE PERMANENT.



CAUTION

STATIC CAN DAMAGE COMPONENTS!


DO NOT HANDLE

UNLESS WRIST STRAP IS WORN

THESE DRAWINGS AND SPECIFICATIONS ARE THE PROPERTY OF CROWN INTERNATIONAL, INC. AND SHALL NOT BE REPRODUCED, COPIED, OR USED AS THE BASIS FOR THE MANUFACTURE OR SALE OF APPARATUS OR DEVICES WITHOUT PERMISSION.

UNCONTROLLED

UNLESS OTHERWISE MARKED IN RED INK BY CM AS A CONTROLLED COPY, COPIES OF THESE DOCUMENTS INCLUDING ASSOCIATED ELECTRONIC REPRODUCTIONS ARE FOR REFERENCE ONLY.

DISTRIBUTION		DWN	TRW	05-10-01	 CROWN INTERNATIONAL, INC. 1718 W. MISHAWAKA RD. ELKHART IN. 46517 PHONE (219) 294-8000 WWW.CROWNINTL.COM
K		CHK	JUM	5-10-01	
FILENAME		CM	MMG	5-10-01	
132157-2_A_01.PCB		PE	JK	5-10-01	TITLE
TOLERANCE UNLESS OTHERWISE SPECIFIED					PWA, MRX INPUT
.00 - ±.02"					SIZE DWG NO.
.000 - ±.010"					A 132157-2
DRILLS - ±.003"					REV
DO NOT SCALE DRAWING					A
		SCALE NONE			PROJ NO. MD455PR
					SHEET 1 OF 8