

REV.	DESCRIPTION	DATE	APPROVED
1	DELETE SPADE LUGS AND COVERS FROM BLACK UL AND WHITE UL WIRES	11-16-79	me/a.r.
2	ADD MOLEX CONNECTOR. RELOCATE FAN PLUG. ADD JCR CHECKED	4-12-85	9/19/83

**REVISIONS**

1. INFORMATION CONTAINED IN THIS DOCUMENT IS PROPRIETARY TO LEXICON, INC. AND IS FURNISHED SOLELY FOR MAINTENANCE PURPOSES. REPRODUCTION, DISTRIBUTION OR USE FOR ANY OTHER PURPOSE IS EXPRESSLY PROHIBITED.

Document Control No. 1290

**NOTES**

- REFER TO BOM NO. 020-01337 AND ASSEMBLY NOTES FOR POWER SUPPLY BDS. DOC# 080-01802.
- SOLDER JOINTS OF CONN. PINS MUST BE HOT, USE FLUX AND HIGH WATTAGE SOLDERING IRON.
- BEND LED LEADS ON LEXICON LED BENDING JIG. JIG IS INSCRIBED WITH THE LED PART NO., 430-00904.
- MOUNT MOMENTARY SWITCH SO THAT THE SWITCH PUSHING IS PARALLEL TO THE P.C. BOARD SURFACE.
- STRIP WIRE 1/8" FOR HARDWARE CONNECTIONS.
- STRIP TIN WIRE 1/4" FOR SOLDER CONNECTIONS.
- BLACK OUT VOLTAGE CHANGEOVER SWITCHES (#451-02230) WITH BLACK INDELIBLE FELT-TIPPED MARKER (02230) WITH BLACK INDELIBLE FELT-TIPPED MARKER.
- ALL UL WIRE IS UL #1015, 18AWG, INSUL. .032" THK., RATED FOR 600V, MAX. AMBIENT TEMP 105°C.
- TORQUE SPEC:
- 2-56 PNH. M6. PWRK. SWITCH 4 IN. LBS.
- 4-40 " DIODE BRIDGE 8 "
- 6-32 " STANDOFFS, KEYSTONE } 18 "
- 10-32 " M6. L6. ELEC. CAP 28 "

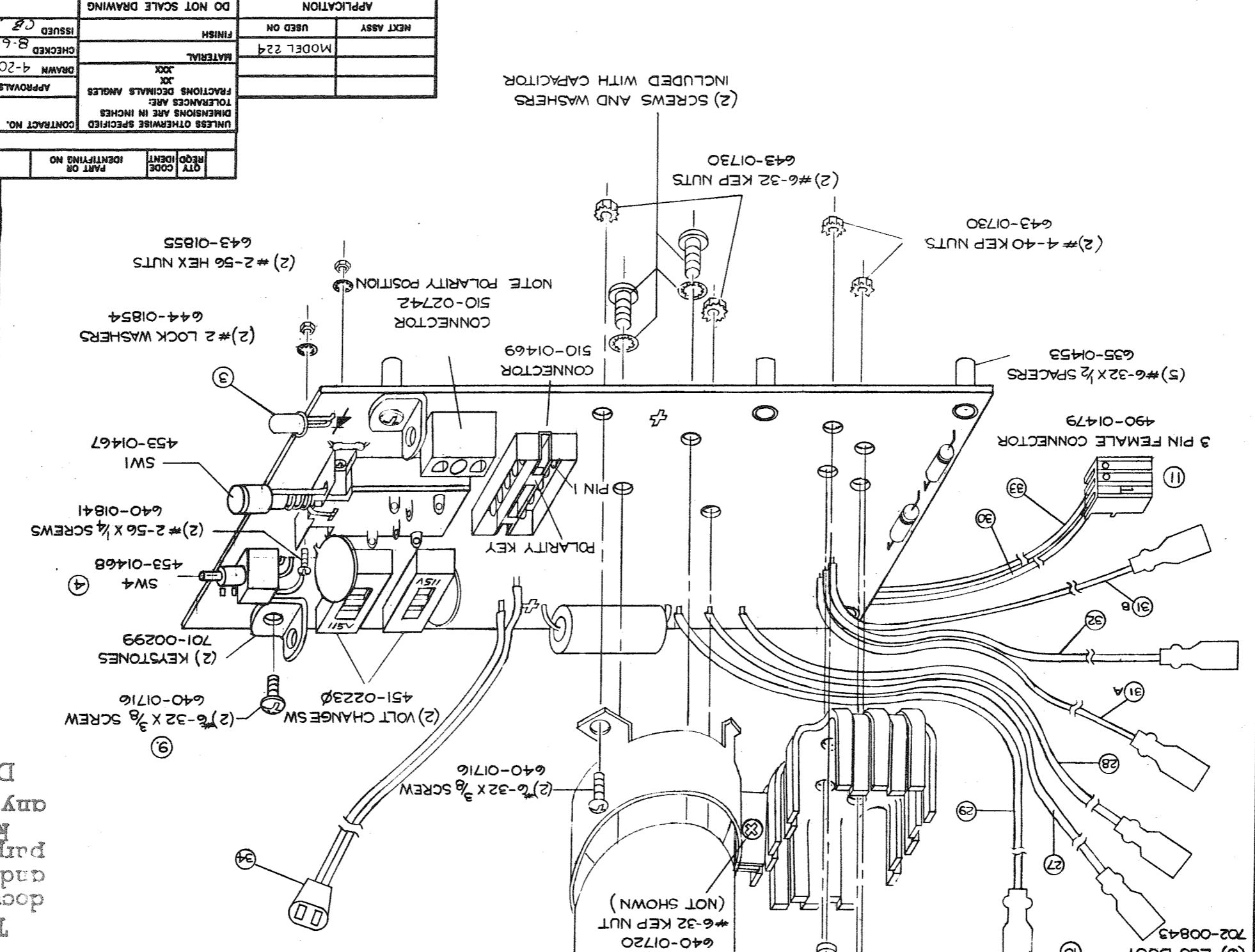
- CRIMP TOOL: MOLEX #11-20-0340.
- CRIMP TOOL: AMP #18-14 TYPE F.
- ADD A DROP OF LOC-TITE #242 TO THE 2 KEYSTONE
- BRACKET MTS. SCREWS

REV.	SIZE	ISSUED	SCALE	SHEET
2	C	8-6-79	1:1	1011
1	B	4-20-79		

ASS'Y DWG., POWER SUPPLY BD. #1

EXICON

WIRE	TO	FROM	COLOR	LENGTH
27	PS3	PS1	RED	10"
28	PS3	GND	BLK	10"
29	FUSE BD.	-5V UNREG	YEL	10"
30	BACKPLANE/	RESET SW	BLK	18"
31A	FUSE BD	J10-1	RED	7 1/2"
31B	FUSE BD	J10-3	RED	7 1/2"
32	FUSE BD	J10-2	RED/YEL	7 1/2"
33	BACKPLANE/	RESET SW	GRN	18"
34	FAN	PS1, J18	BLK	7 1/2"



REV.	DATE	APPROVALS	MATERIAL	FINISH	APPLICATION
2	8-6-79	CB	ISSUED	USED ON	
1	4-20-79	JH	DRAWN	MODEL 224	

UNLESS OTHERWISE SPECIFIED DIMENSIONS ARE IN INCHES. FRACTIONS DECIMALS ANGLES XXX

DO NOT SCALE DRAWING

REV.	DESCRIPTION	DATE	APPROVED
2	ADD MOLEX CONNECTOR. RELOCATE FAN PLUG. ADD JCR CHECKED	4-12-85	9/19/83
1	DELETE SPADE LUGS AND COVERS FROM BLACK UL AND WHITE UL WIRES	11-16-79	me/a.r.

ASS'Y DWG., POWER SUPPLY BD. #1

EXICON

REV.	DESCRIPTION	DATE	APPROVED
2	ADD MOLEX CONNECTOR. RELOCATE FAN PLUG. ADD JCR CHECKED	4-12-85	9/19/83
1	DELETE SPADE LUGS AND COVERS FROM BLACK UL AND WHITE UL WIRES	11-16-79	me/a.r.

**REVISIONS**

1. INFORMATION CONTAINED IN THIS DOCUMENT IS PROPRIETARY TO LEXICON, INC. AND IS FURNISHED SOLELY FOR MAINTENANCE PURPOSES. REPRODUCTION, DISTRIBUTION OR USE FOR ANY OTHER PURPOSE IS EXPRESSLY PROHIBITED.

Document Control No. 1290

**NOTES**

- REFER TO BOM NO. 020-01337 AND ASSEMBLY NOTES FOR POWER SUPPLY BDS. DOC# 080-01802.
- SOLDER JOINTS OF CONN. PINS MUST BE HOT, USE FLUX AND HIGH WATTAGE SOLDERING IRON.
- BEND LED LEADS ON LEXICON LED BENDING JIG. JIG IS INSCRIBED WITH THE LED PART NO., 430-00904.
- MOUNT MOMENTARY SWITCH SO THAT THE SWITCH PUSHING IS PARALLEL TO THE P.C. BOARD SURFACE.
- STRIP WIRE 1/8" FOR HARDWARE CONNECTIONS.
- STRIP TIN WIRE 1/4" FOR SOLDER CONNECTIONS.
- BLACK OUT VOLTAGE CHANGEOVER SWITCHES (#451-02230) WITH BLACK INDELIBLE FELT-TIPPED MARKER (02230) WITH BLACK INDELIBLE FELT-TIPPED MARKER.
- ALL UL WIRE IS UL #1015, 18AWG, INSUL. .032" THK., RATED FOR 600V, MAX. AMBIENT TEMP 105°C.
- TORQUE SPEC:
- 2-56 PNH. M6. PWRK. SWITCH 4 IN. LBS.
- 4-40 " DIODE BRIDGE 8 "
- 6-32 " STANDOFFS, KEYSTONE } 18 "
- 10-32 " M6. L6. ELEC. CAP 28 "

- CRIMP TOOL: MOLEX #11-20-0340.
- CRIMP TOOL: AMP #18-14 TYPE F.
- ADD A DROP OF LOC-TITE #242 TO THE 2 KEYSTONE
- BRACKET MTS. SCREWS

REV.	SIZE	ISSUED	SCALE	SHEET
2	C	8-6-79	1:1	1011
1	B	4-20-79		

ASS'Y DWG., POWER SUPPLY BD. #1

EXICON

SHEET 1 OF 1		SCALE NA		DO NOT SCALE DRAWING	
REV. 8		ISSUED		APPLICATION	
REV. 7		CHECKED		NEXT ASSEMBLY	
REV. 6		DRAWN		USED ON	
REV. 5		DATE		224X	
REV. 4		APPROVALS		224X (ALL)	
REV. 3		PARTS LIST		1200 (ALL)	
REV. 2		NOMENCLATURE OR DESCRIPTION		224X	
REV. 1		MATERIAL		224X	

**LEXICON**  
 SCHEMATIC, POWER SUPPLY  
 060-01524-D  
 6-20-73  
 P/H6  
 6-18-73  
 224X

UNLESS OTHERWISE SPECIFIED DIMENSIONS ARE IN INCHES FRACTIONS DECIMALS ANGLES

APPROVALS

DATE

DESCRIPTION

DATE

APPROVED

REVISIONS

1 WAS 315-2, NOW 315-1; WAS 315-1, NOW 315-2; 15V WIRE WAS BLU, NOW GRAY; 15V WIRE WAS GRAY, NOW BLU

2 CORRECT POLARITY ON CR3

3 CORRECT FAN PLUG CONN.

4 OMIT CR7, CR10, NOW CR2;

5 ADD VOLTAGE NOTATIONS; 5-20-82 JC

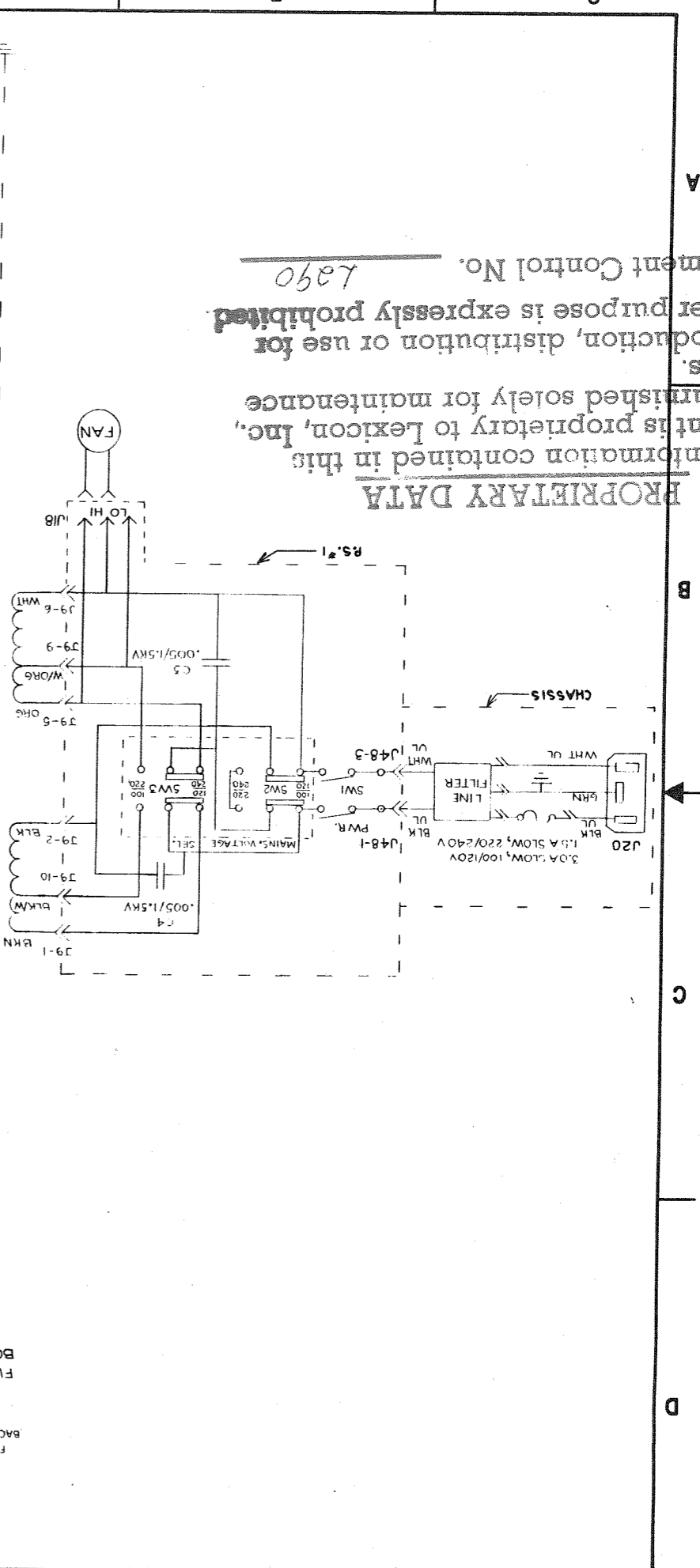
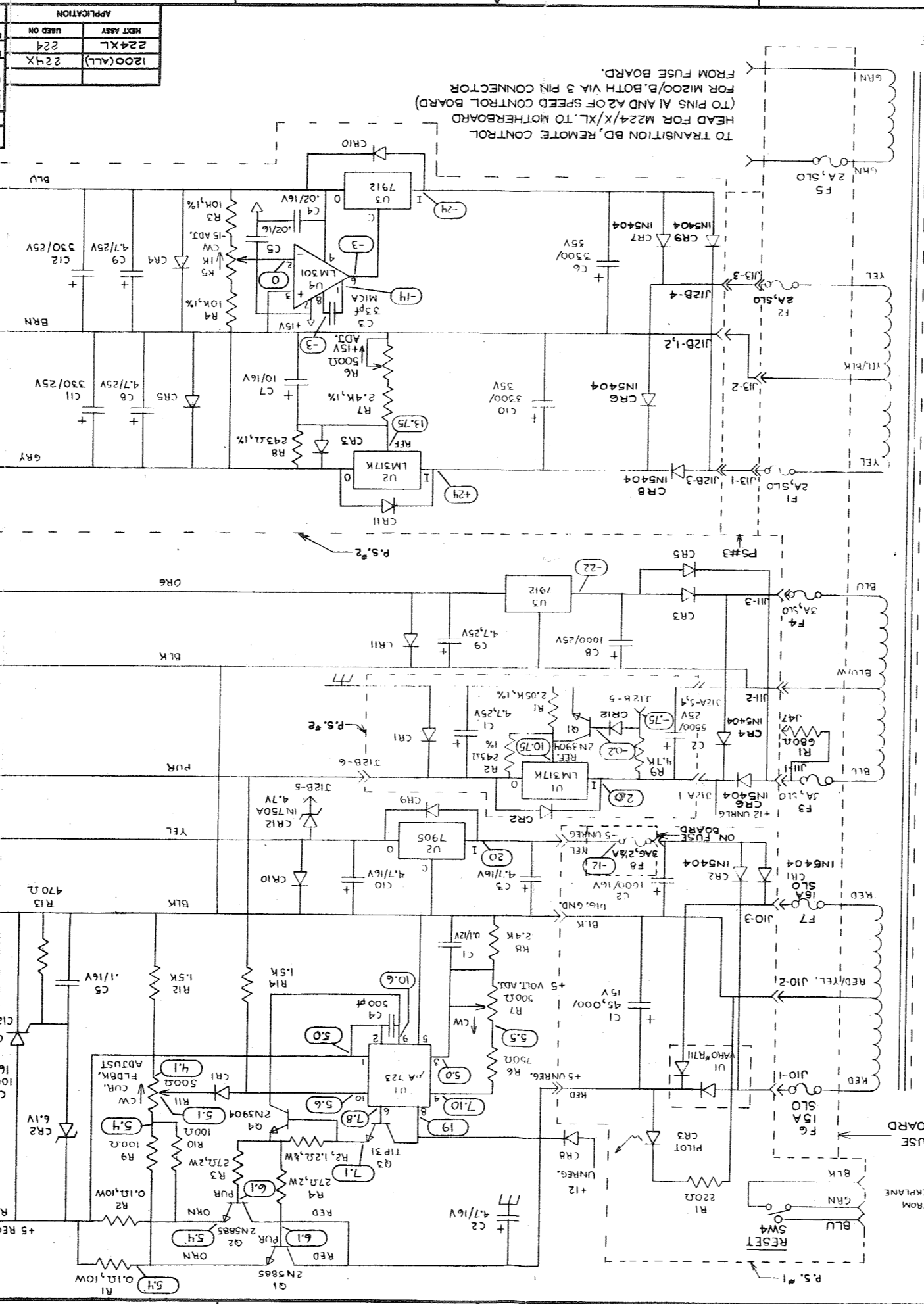
6 ADDED FUSE BOARD AND JB

7 REVISED PS#3

8 REVISED AS PER ECO

9 UPDATE NOTES

REV.	DESCRIPTION	DATE	APPROVED
1	WAS 315-2, NOW 315-1; WAS 315-1, NOW 315-2; 15V WIRE WAS BLU, NOW GRAY; 15V WIRE WAS GRAY, NOW BLU	7-18-79	
2	CORRECT POLARITY ON CR3	8-5-79	
3	CORRECT FAN PLUG CONN.	8-16-79	
4	OMIT CR7, CR10, NOW CR2;	2-25-82	
5	ADD VOLTAGE NOTATIONS; 5-20-82 JC		
6	ADDED FUSE BOARD AND JB	4-21-83	
7	REVISED PS#3	12-23-83	
8	REVISED AS PER ECO	2-23-84	
9	UPDATE NOTES	2-23-84	



**PROPRIETARY DATA**

The information contained in this document is proprietary to Lexicon, Inc., and is furnished solely for maintenance purposes. Any other production, distribution or use for any other purpose is expressly prohibited.

Document Control No. 1490

LEXICON Inc.		TOLERANCES UNLESS OTHERWISE SPECIFIED	
APPROVALS	DATE	DRAWN	DATE
		PN6	6-14-79
CHECKED		SCALE	REV.
CB		1:1	2
DRAWING NO.		SIZE	8-31-79
030-01424-C		C	224
SHEET		RECORD OF CHANGES	
1 of 1			

ASSY DWG., POWER SUPPLY #2

Document Control No. 7290

any other purpose is expressly prohibited

Reproduction, distribution or use for purposes.

and is furnished solely for maintenance

document is proprietary to Lexicon, Inc.

The information contained in this

PROPRIETARY DATA

6 PIN FEMALE CONN. #490-02712

POWER SUPPLY BOARD #2/ (USE CRIMP TOOL

670-01686 670-01688 670-01687

WIRE COLOR LENGTH PART NO. FROM/ TO/ TYPE OF CONN. TYPE OF CONN.

GRAY TIN 1/4" STRIP 12" 670-01686

BLUE SUPPLY 670-01688

GRAY SOLDER CONN. #11-20-0340 670-01687

5500 $\mu$ /25V

COPIES WITH 2 - #8-32 SCREWS AND 2 - #8 INT. STAR WASHERS)

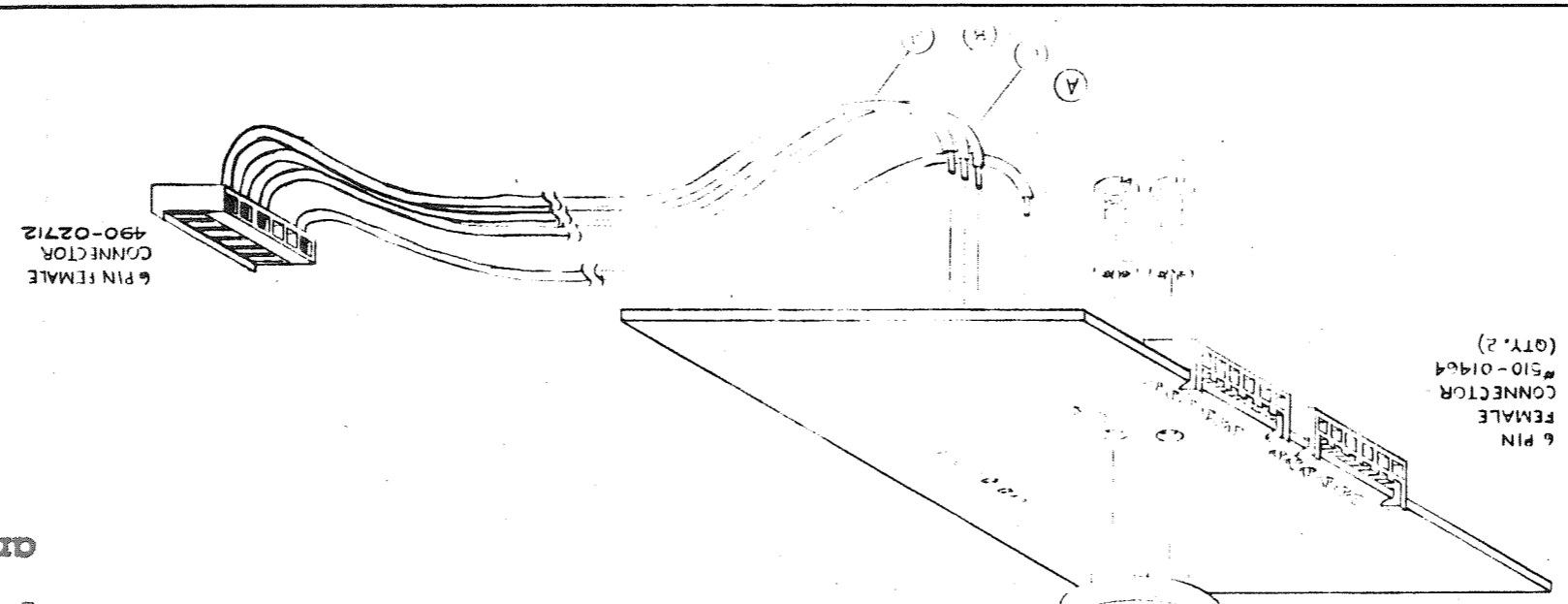
R.C. BOAHU #710-01438

6 PIN FEMALE CONNECTOR #S10-01464 (QTY. 2)

1. USE THIS ASSY DWG. ALONG WITH PARTS LIST #020-01338.

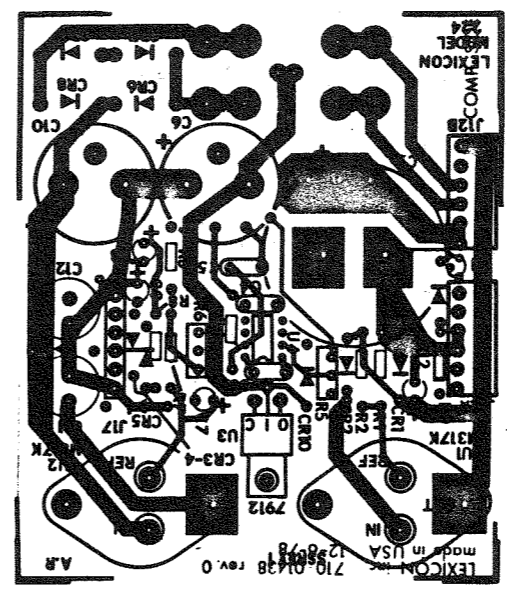
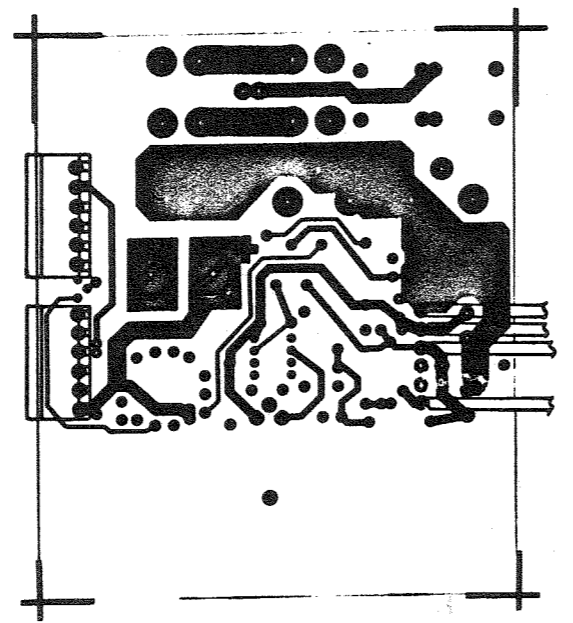
2. TORQUE SPEC: #8-32 PNH M16. C2 .5 IN. LBS.

NOTES



WIRE COLOR	LENGTH	PART NO.	FROM/ TO/ TYPE OF CONN.	TYPE OF CONN.
BROWN	12"	670-01686	6 PIN FEMALE CONN. #490-02712	6 PIN FEMALE
BLUE	TIN 1/4"	670-01688	POWER SUPPLY BOARD #2/ (USE CRIMP TOOL	670-01688
GRAY		670-01687	SOLDER CONN. #11-20-0340	670-01687

EACH SIDE - SHOWING BOTTOM VIEW OF COMPONENTS DRAWN BELOW.



LTR	DATE	DESCRIPTION	APPROVED
1	8-31-79	REVERSE BLUE & GRAY WIRE LOCATIONS	MRH, 8/23/79
2	4-12-83	REMOVE FUSES. ADD 6 PIN CONN.	CB 9/16/83

REV.	DESCRIPTION	DATE	APPROVED
1	ADDED FUSE BOARD	4-18-83	JB
		6-23-83	Checked
			C 4 7/83

REV.	DESCRIPTION	DATE	APPROVED
1	ADDED FUSE BOARD	4-18-83	JB
		6-23-83	Checked
			C 4 7/83

REV.	DESCRIPTION	DATE	APPROVED
1	ADDED FUSE BOARD	4-18-83	JB
		6-23-83	Checked
			C 4 7/83

REVISIONS

1. OBSERVE POLARITY ON ALL CONNECTORS.  
2. CONNECTOR ATTACHES TO MOTHERBOARD ON MODEL 1200.

NOTES

PROPRIETARY DATA  
The information contained in this document is proprietary to Lexicon, Inc. and is furnished solely for maintenance purposes. Reproduction, distribution or use for any other purpose is expressly prohibited. Document Control No. 1590

any other purpose is expressly prohibited. Reproduction, distribution or use for any other purpose is expressly prohibited. Document Control No. 1590

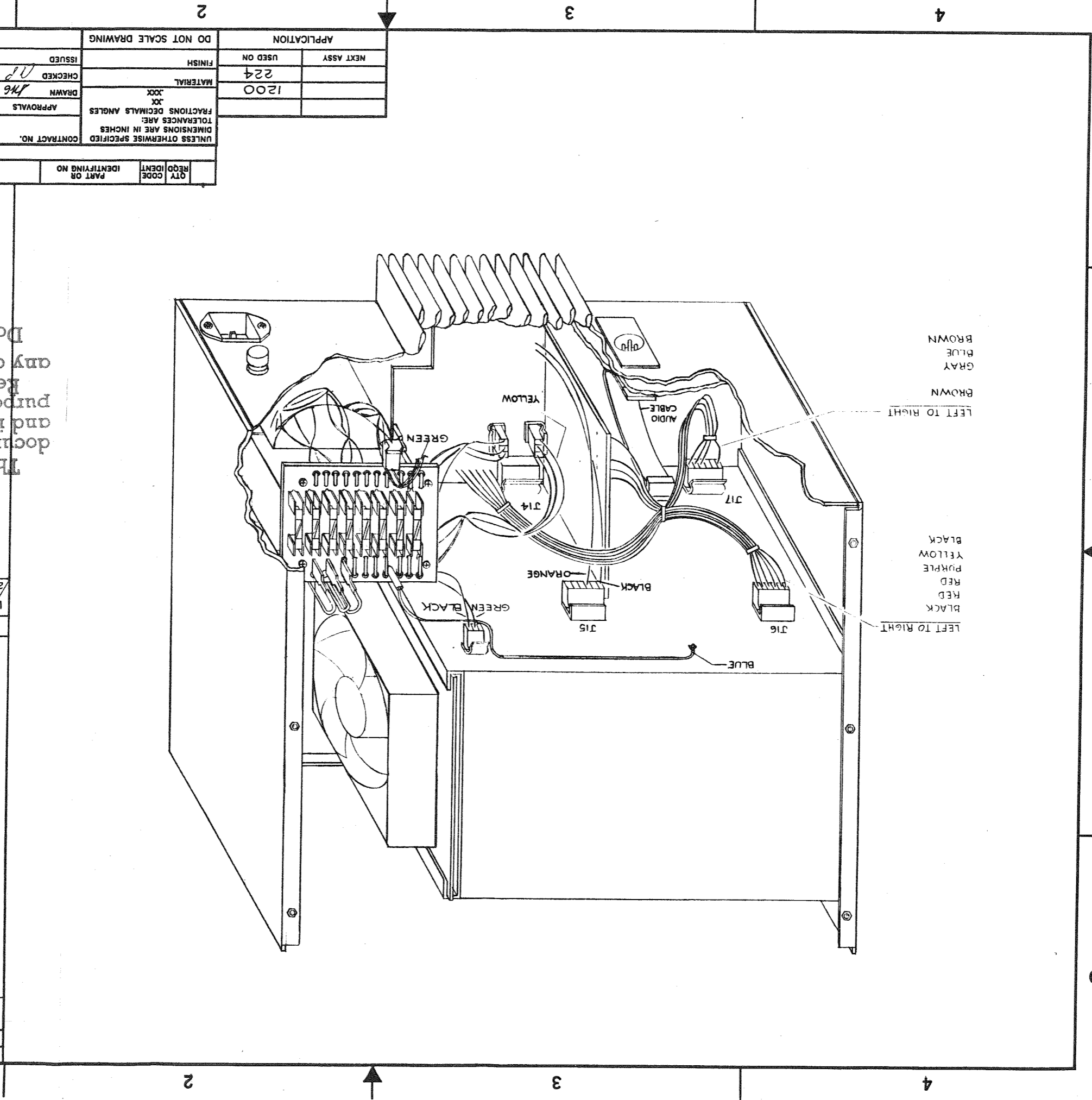
QTY	REQD	CODE	PART OR IDENTIFYING NO.	NOMENCLATURE OR DESCRIPTION	MATERIAL SPECIFICATION

QTY	REQD	CODE	PART OR IDENTIFYING NO.	NOMENCLATURE OR DESCRIPTION	MATERIAL SPECIFICATION

PARTS LIST

UNLESS OTHERWISE SPECIFIED	TOLERANCES ARE IN INCHES	FRACTIONS DECIMALS ANGLES	MATERIAL	DATE	APPROVALS	DATE	APPROVALS	DATE	APPROVALS

CONTRACT NO.	ISSUED	CHECKED	DRAWN	SCALE	SHEET
				1:2	1 OF 1



APPLICATION	USED ON	FINISH	ISSUED	SCALE	SHEET
				1:2	1 OF 1

UNLESS OTHERWISE SPECIFIED	TOLERANCES ARE IN INCHES	FRACTIONS DECIMALS ANGLES	MATERIAL	DATE	APPROVALS	DATE	APPROVALS	DATE	APPROVALS

PARTS LIST

QTY	REQD	CODE	PART OR IDENTIFYING NO.	NOMENCLATURE OR DESCRIPTION	MATERIAL SPECIFICATION

PARTS LIST

QTY	REQD	CODE	PART OR IDENTIFYING NO.	NOMENCLATURE OR DESCRIPTION	MATERIAL SPECIFICATION

PARTS LIST

QTY	REQD	CODE	PART OR IDENTIFYING NO.	NOMENCLATURE OR DESCRIPTION	MATERIAL SPECIFICATION

PARTS LIST

QTY	REQD	CODE	PART OR IDENTIFYING NO.	NOMENCLATURE OR DESCRIPTION	MATERIAL SPECIFICATION

PARTS LIST

QTY	REQD	CODE	PART OR IDENTIFYING NO.	NOMENCLATURE OR DESCRIPTION	MATERIAL SPECIFICATION

PARTS LIST

QTY	REQD	CODE	PART OR IDENTIFYING NO.	NOMENCLATURE OR DESCRIPTION	MATERIAL SPECIFICATION

PARTS LIST

QTY	REQD	CODE	PART OR IDENTIFYING NO.	NOMENCLATURE OR DESCRIPTION	MATERIAL SPECIFICATION

PARTS LIST

QTY	REQD	CODE	PART OR IDENTIFYING NO.	NOMENCLATURE OR DESCRIPTION	MATERIAL SPECIFICATION

PARTS LIST

QTY	REQD	CODE	PART OR IDENTIFYING NO.	NOMENCLATURE OR DESCRIPTION	MATERIAL SPECIFICATION

PARTS LIST

QTY	REQD	CODE	PART OR IDENTIFYING NO.	NOMENCLATURE OR DESCRIPTION	MATERIAL SPECIFICATION

PARTS LIST

QTY	REQD	CODE	PART OR IDENTIFYING NO.	NOMENCLATURE OR DESCRIPTION	MATERIAL SPECIFICATION

PARTS LIST

QTY	REQD	CODE	PART OR IDENTIFYING NO.	NOMENCLATURE OR DESCRIPTION	MATERIAL SPECIFICATION

PARTS LIST

QTY	REQD	CODE	PART OR IDENTIFYING NO.	NOMENCLATURE OR DESCRIPTION	MATERIAL SPECIFICATION

PARTS LIST

QTY	REQD	CODE	PART OR IDENTIFYING NO.	NOMENCLATURE OR DESCRIPTION	MATERIAL SPECIFICATION

PARTS LIST

QTY	REQD	CODE	PART OR IDENTIFYING NO.	NOMENCLATURE OR DESCRIPTION	MATERIAL SPECIFICATION

PARTS LIST

QTY	REQD	CODE	PART OR IDENTIFYING NO.	NOMENCLATURE OR DESCRIPTION	MATERIAL SPECIFICATION

PARTS LIST

QTY	REQD	CODE	PART OR IDENTIFYING NO.	NOMENCLATURE OR DESCRIPTION	MATERIAL SPECIFICATION

PARTS LIST

QTY	REQD	CODE	PART OR IDENTIFYING NO.	NOMENCLATURE OR DESCRIPTION	MATERIAL SPECIFICATION

PARTS LIST

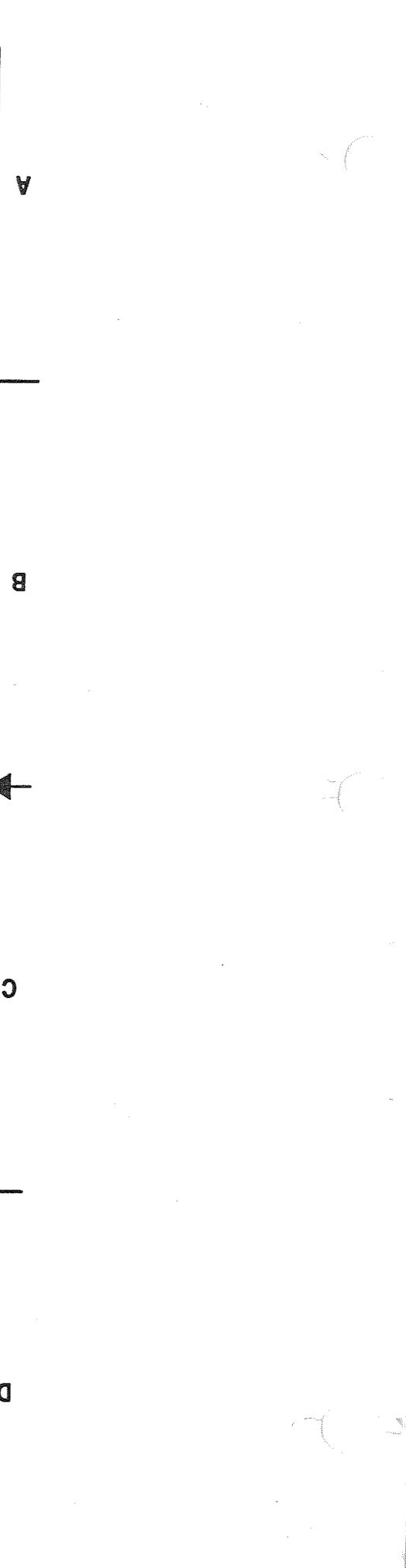
QTY	REQD	CODE	PART OR IDENTIFYING NO.	NOMENCLATURE OR DESCRIPTION	MATERIAL SPECIFICATION

PARTS LIST

QTY	REQD	CODE	PART OR IDENTIFYING NO.	NOMENCLATURE OR DESCRIPTION	MATERIAL SPECIFICATION

PARTS LIST

QTY	REQD	CODE	PART OR IDENTIFYING NO.	NOMENCLATURE OR DESCRIPTION	MATERIAL SPECIFICATION



1

2

3

4

A

B

C

D

1

2

3

4

A

B

C

D

1

2

3

4