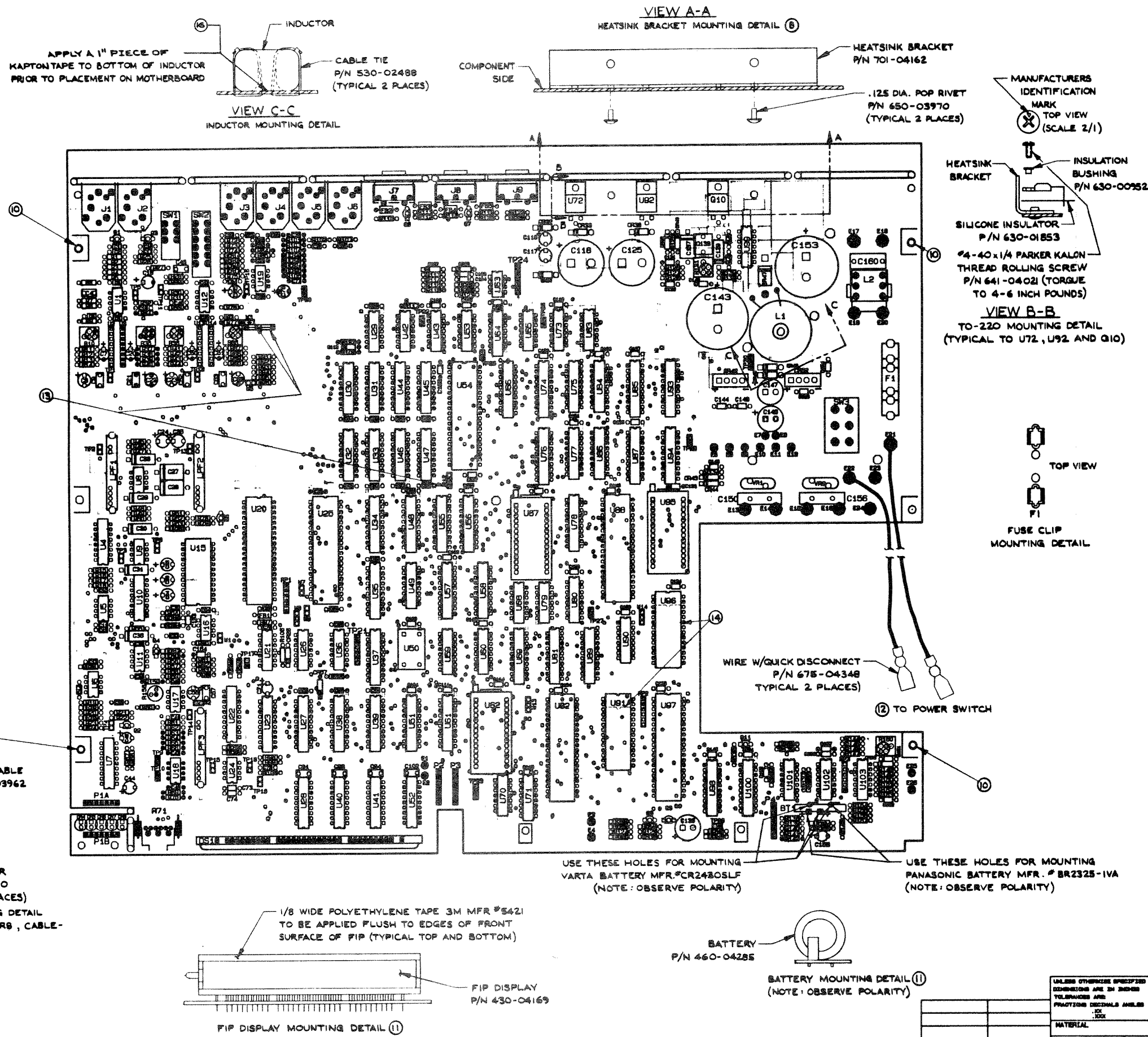


REVISIONS			
REV.	DESCRIPTION	DATE	APPROVED
0	RELEASE FOR PROT.	2 APR 65	[Signature]
1	RELEASE FOR PROD.	25 JUN 65	[Signature]
2	CORRECT ANALOG PMR GND AND C142 TO 100 PF ECO 850819-0	11/11/65	[Signature]
3	ADDED CR58 AT E7 H.V. PER ECO # 851107-00	11/11/65	[Signature]

QTY REQD	CODE IDENT	PART OR IDENTIFYING NO	NOMENCLATURE OR DESCRIPTION	MATERIAL SPECIFICATION
PARTS LIST				
UNLESS OTHERWISE SPECIFIED DIMENSIONS ARE IN INCHES FRACTIONS DECIMALS ANGLES TOLERANCES ARE:				
CONTRACT NO.				
APPROVALS				
DATE				
DRAWN JZ, SH 3/15/65				
CHECKED PG 4/13/65				
ISSUED [Signature]				
MATERIAL				
FINISH				
NEXT ASSY				
USED ON				
APPLICATION				
DO NOT SCALE DRAWING				

SCHEMATIC MOTHERBOARD, POWER SUPPLY, PCM70	
ISSUED [Signature]	DATE 11/11/65
SCALE ~	SHEET 10 OF 10

FORMAL, INC. 05840



REVISIONS			
REV.	DESCRIPTION	DATE	APPROVED
0	RELEASE FOR PROTOTYPE	3/8/85	DHS
1	RELEASE FOR PRODUCTION	8/12/85	DHS
2	ADDED NOTES 13 AND 14, CHANGED CABLE TIE P/N PER ECO NO. 850819-00	AV 8/23/75 CHK DHS 8/28/85	DC DHS 8/28/85 PE DHS 8/28/85
3	ADDED C163-165, C113, CR67 AND (1) JUMPER WIRE. CHANGED NOTE 13 AND POSITION OF C113 AND R12 PER ECO NO. 850925-00	AV 9/27/85 CHK DHS 9/30/85	DC JAZ 9/30/85 PE DHS 9/30/85
4	REDRAWN WITH CHANGES PER ECO #850925-00	AV 10/28/85 CHK 23 OCT 85	DC 21 OCT 85 PE 21 OCT 85
5	ADDED NOTES 15 AND 16 PER ECO #851219-00	AV 1/24/86 CHK 27 FEB 86	DC 27 FEB 86 PE 27 FEB 86

NOTES

- REFER TO LEXICON BOM NO. 024-04224 AND 025-04225
- ALL COMPONENTS TO BE INSTALLED FROM COMPONENT SIDE OF P.C.B. EXCEPT SHAGGED STANDOFFS AND P1 RIBBON CABLE.
- MASKING FOR POST-SOLDER ASSEMBLY IS INDICATED BY SOLID AREAS (●)
- COMPONENT HEIGHT 1.00" MAXIMUM
- LEAD PROTRUSIONS .080" MAXIMUM FROM CIRCUIT SIDE OF P.C.B.
- SOCKET IC POSITIONS U4, U10, U15, U20, U22, U23, U25, U30, 31, U44, 45, U54, U62, U67, U73, U77, U82, U84, U85, U88, U91, U95-97 ONLY.
- SQUARE PAD (□) DENOTES, PIN ONE OF IC, CATHODE OF DIODE, ANODE OF CAPACITOR, EMITTER OF TRANSISTOR.
- HEATSINK BRACKET TO BE SECURED TO PCB WITH (2) .125 DIA. POP RIVETS. THIS IS TO BE DONE BEFORE THE INSTALLATION OF U72, U92, AND Q10.
- LEXICON SUPPLIED JIG TO BE USED FOR LED MOUNTING TO ENSURE PROPER ALIGNMENT.
- INSTALL SHAG STANDOFFS (QTY. 4) P/N 635-03633 FROM CIRCUIT SIDE.
- TO BE ASSEMBLED AT CHASSIS KIT LEVEL, AFTER MOTHERBOARD ASSEMBLY.
- TWIST LOOSELY AND ROUTE THRU TRANSFORMER BRACKET.
- INSTALL W3, W4 JUMPER WIRES AND W12 JUMPER BLOCK P/N 490-02956. DO NOT INSTALL W2.
- INSTALL U91 AND U95 IN PIN 3 LOCATION AS SHOWN WHEN 24 PIN I.C.'S ARE USED.
- ADD DIODES CR69-62 TO J1 AND J2 PER ECO NO. 851219-00.
- INSTALL 1" PIECE OF KAPTON TAPE UNDER L1 PER LEXICON P/N 720-05571.

APPROVALS		DATE	CONTRACT NO.	
DRAWN	SNH	8/10/85	LEXICON	
CHECKED	WSN	8/11/85	PC, MOTHERBOARD, M70	
ISSUED	DHS	8/12/85	ASSEMBLY DRAWING	
NEXT ASBY	USED ON	FINISH	SIZE	FORM NO.
APPLICATION	DO NOT SCALE DRAWING		DWG. NO.	060-04145
			REV	5
			SCALE	1:1
			SHEET	1 OF 1

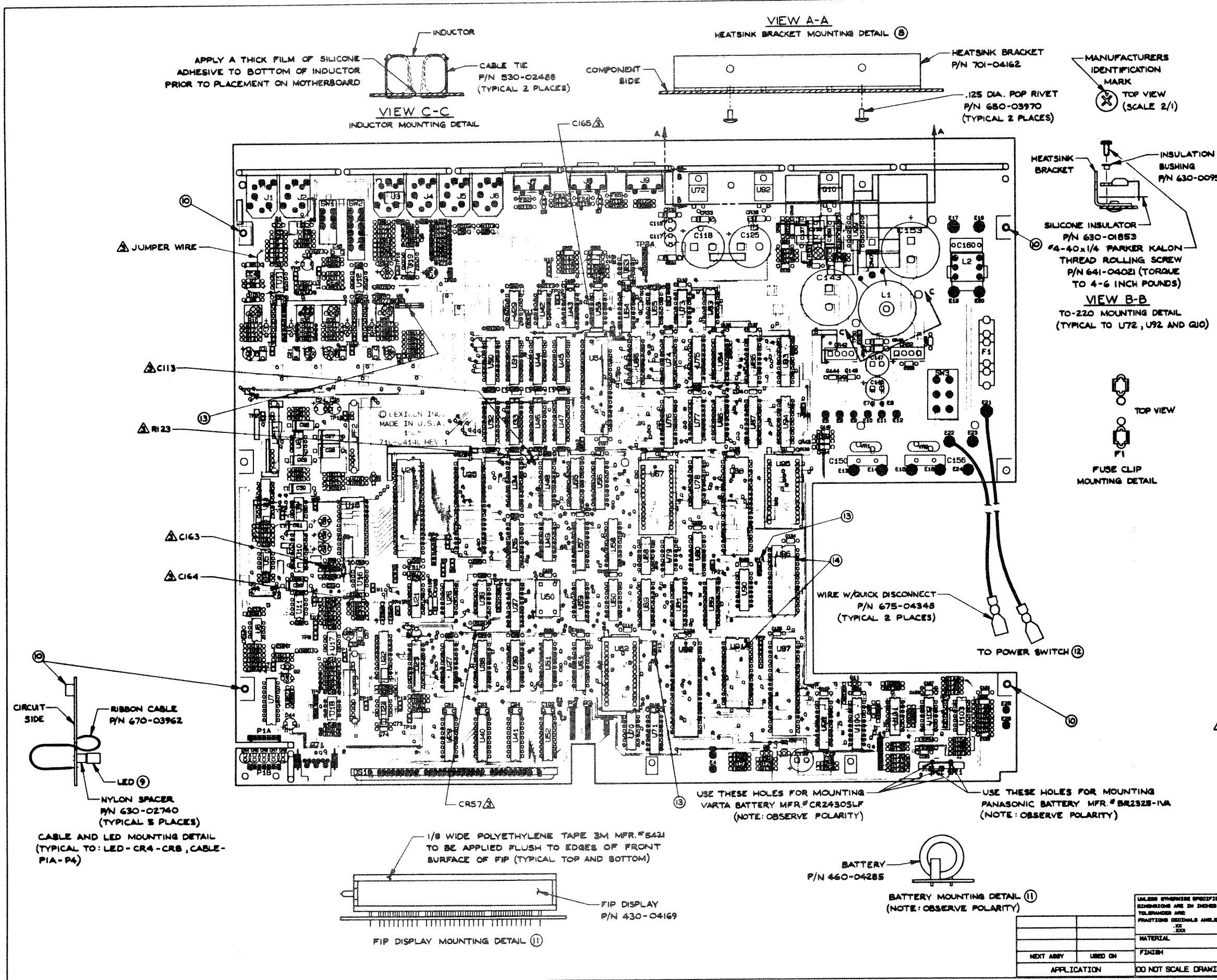
UNLESS OTHERWISE SPECIFIED DIMENSIONS ARE IN INCHES TOLERANCES ARE FRACTIONS DECIMALS ANGLES .XX .XXX

MATERIAL

FINISH

SCALE 1:1

SHEET 1 OF 1



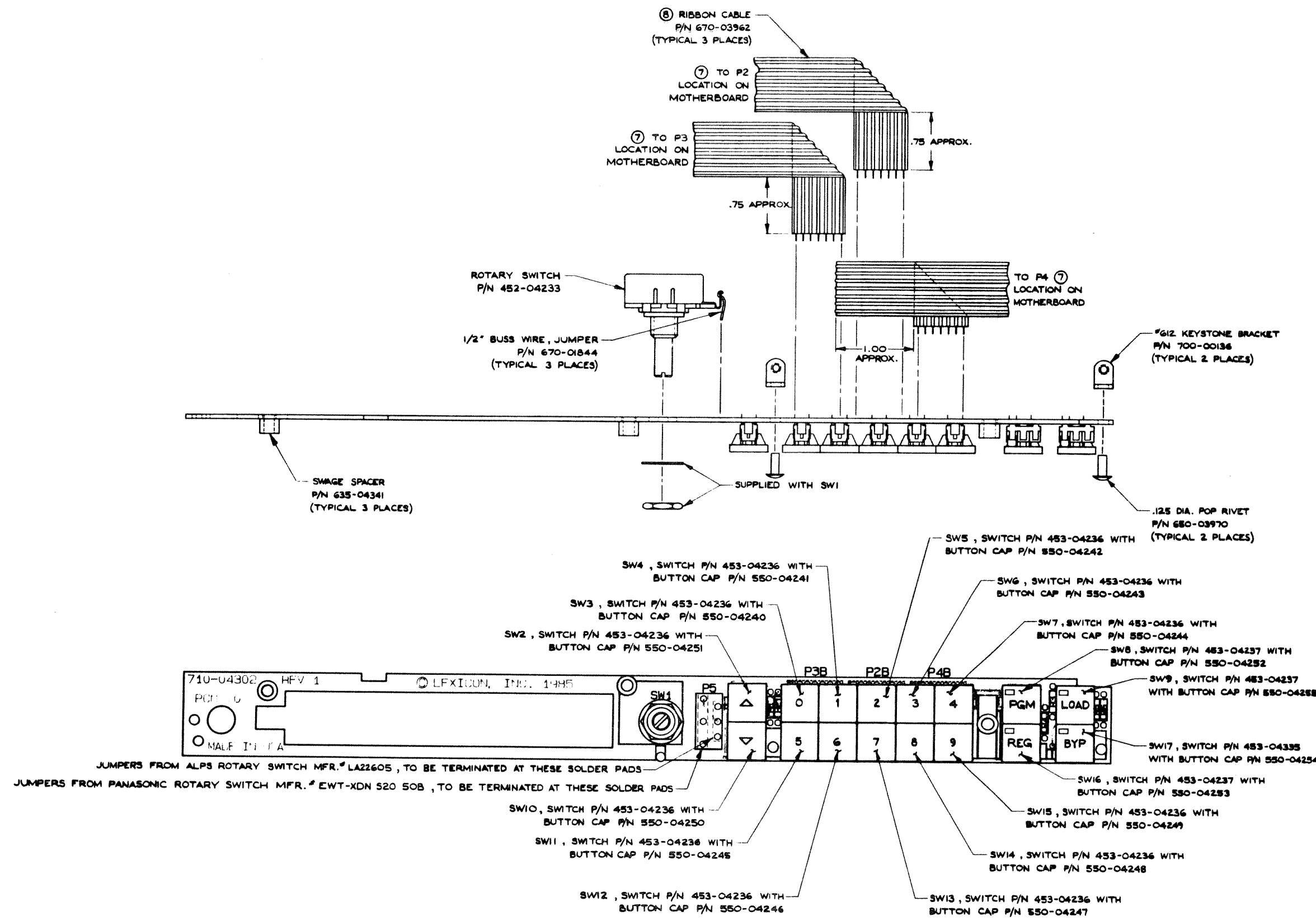
REVISIONS			
REV.	DESCRIPTION	DATE	APPROVED
0	RELEASE FOR PROTOTYPE	3/8/85	DHS
1	RELEASE FOR PRODUCTION	8/17/85 26 JUNE 85	DHS
2	ADDED NOTES 13 AND 14, CHANGED CABLE TIE P/N PER ECO #850819-00	DWN N 8/23/85 CHK DMS 8/26/85 PE DMS 8/28/85	DMS
3	ADDED C163-C165, C113, CR57 AND (1) JUMPER WIRE. CHANGED NOTE 13 AND POSITION OF C113 AND R123. PER ECO # 850925-00	DWN N 9/27/85 CHK DMS 30 Sept 85 PE DMS 30 Sept 85	DMS

- NOTES**
- REFER TO LEXICON BOM NO. 024-04224 AND 025-04225
 - ALL COMPONENTS TO BE INSTALLED FROM COMPONENT SIDE OF P.C.B. EXCEPT SHAGGED STANDOFFS AND P1 RIBBON CABLE.
 - MASKING FOR POST-SOLDER ASSEMBLY IS INDICATED BY SOLID AREAS (■)
 - COMPONENT HEIGHT 1.00" MAXIMUM
 - LEAD PROTRUSIONS .080" MAXIMUM FROM CIRCUIT SIDE OF P.C.B.
 - SOCKET IC POSITIONS U4, U10, U15, U20, U22, U23, U25, U30-33, U44-49, U54, U52, U57, U72, U77, U82, U84, U88, U89, U91, U95-97 ONLY.
 - SQUARE PAD (□) DENOTES, PIN ONE OF IC, CATHODE OF DIODE, ANODE OF CAPACITOR, EMITTER OF TRANSISTOR.
 - HEATSINK BRACKET TO BE SECURED TO PCB WITH (2) .125 DIA. POP RIVETS. THIS IS TO BE DONE BEFORE THE INSTALLATION OF U72, U92 AND Q10.
 - LEXICON SUPPLIED J16 TO BE USED FOR LED MOUNTING TO ENSURE PROPER ALIGNMENT.
 - INSTALL SWAGE STANDOFFS (QTY. 4) P/N 635-03638 FROM CIRCUIT SIDE.
 - TO BE ASSEMBLED AT CHASSIS KIT LEVEL, AFTER MOTHERBOARD ASSEMBLY.
 - TWIST LOOSELY AND ROUTE THRU TRANSFORMER BRACKET.
 - INSTALL W2, W6, W12, W13 AND W14 AS SHOWN. DO NOT INSTALL W2 AND W6.
 - INSTALL U91 AND U96 IN PIN 3 LOCATION AS SHOWN WHEN 24 PIN I.C.'S ARE USED.

CONTRACT NO.		lexicon	
APPROVALS	DATE	PC, MOTHERBOARD, M70	
DRAWN SNH	6/10/85	ASSEMBLY DRAWING	
CHECKED WSN	6/11/85	SIZE	PROJ. NO.
ISSUED DHS	6/12/85	DWG. NO.	080-04145
APPLICATION		SCALE	1:1
DO NOT SCALE DRAWING		SHEET 1 OF 1	

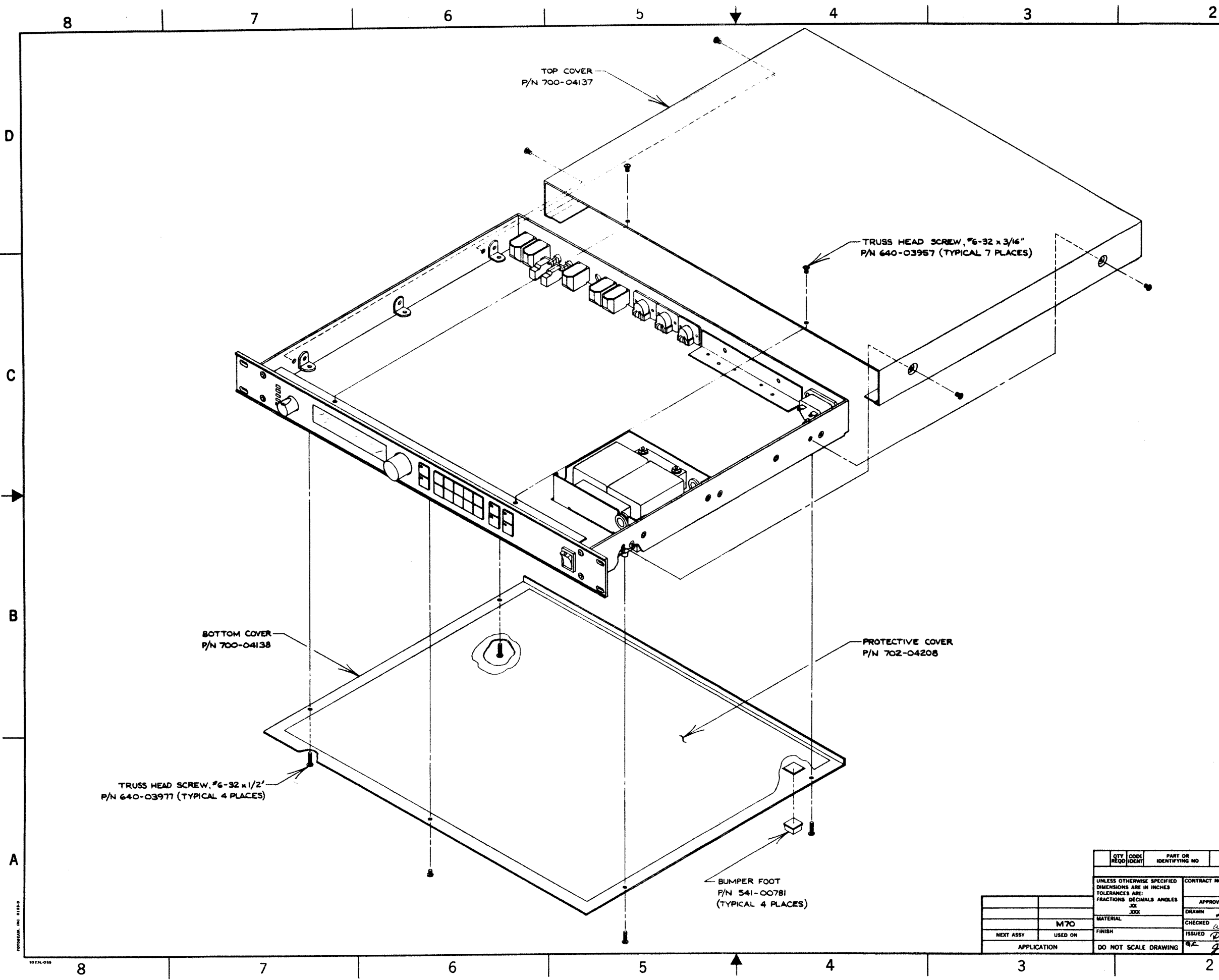
REV.	DESCRIPTION	DATE	APPROVED
0	RELEASED FOR PROD.	30 July 85	<i>[Signature]</i>
1	REVERSED MOUNTING DIRECTION OF RIVETS AND CHANGED BUTTON CAP P/N'S PER ECO# 850819-00	DWN 11/8/23/85 CHK 1/16/85	DC <i>[Signature]</i> PC <i>[Signature]</i>

- NOTES**
- REFER TO LEXICON BOM NO. 023-04220 .
 - ALL COMPONENTS TO BE INSTALLED FROM COMPONENT SIDE OF P.C.B. EXCEPT P2B, P3B, P4B, P5, SW1 AND KEYSTONE BRACKET WITH RIVETS, AS SHOWN.
 - COMPONENT HEIGHT 1.00" MAXIMUM.
 - LEAD PROTRUSIONS .080" MAXIMUM FROM CIRCUIT SIDE OF P.C.B.
 - SQUARE PAD (□) DENOTES PIN ONE.
 - OBSERVE PIN ONE POLARITY ON ALL RIBBON CABLE CONNECTIONS TO MOTHERBOARD.
 - CONNECT AS SHOWN AND FOLD PRIOR TO CONNECTING TO MOTHERBOARD AS SHOWN . ROUTE P2 RIBBON CABLE ABOVE P3 RIBBON CABLE FOR PROPER CONNECTING .



JUMPERS FROM ALPS ROTARY SWITCH MFR. # LA22605 , TO BE TERMINATED AT THESE SOLDER PADS
 JUMPERS FROM PANASONIC ROTARY SWITCH MFR. # EWT-XDN S20 50B , TO BE TERMINATED AT THESE SOLDER PADS

UNLESS OTHERWISE SPECIFIED DIMENSIONS ARE IN INCHES TOLERANCES ARE FRACTIONS DECIMALS ANGLES .XX .XXX		CONTRACT NO.		lexicon	
APPROVALS		DATE	PC, FRONT PANEL BOARD, M70		
DRAWN SNH		6/26/85	ASSEMBLY DRAWING		
CHECKED <i>[Signature]</i>		7/9/85	SIZE FROM NO.	DWG. NO.	REV
ISSUED <i>[Signature]</i>		7/9/85	D	OBO-04307	1
APPLICATION		DO NOT SCALE DRAWING	SCALE 1.5	SHEET 1 OF 1	



REVISIONS			
REV.	DESCRIPTION	DATE	APPROVED
0	RELEASE FOR PRODUCTION	19 Aug 85	<i>[Signature]</i>
1	UPDATED DOCUMENT CONTROL BLOCK PER ECO # 851107-00	11/11/85 CHK: <i>[Signature]</i> APP: <i>[Signature]</i>	<i>[Signature]</i>

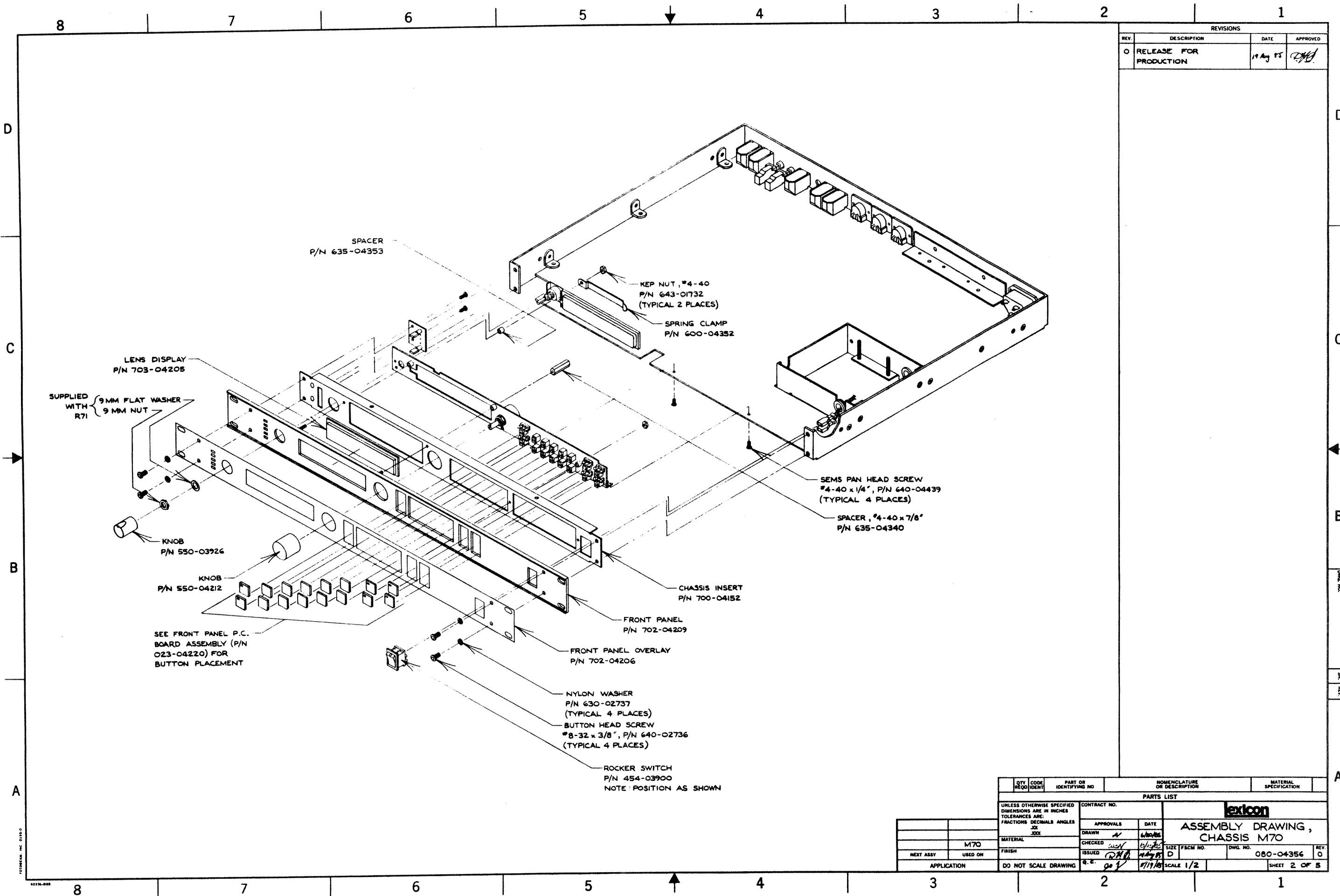
- NOTES**
- TORQUE ALL SCREWS AS FOLLOWS:
 #4-40 TO 4-6 INCH/POUNDS
 #6-32 TO 6-8 INCH/POUNDS
 #8-32 TO 8-10 INCH/POUNDS
 - TOP COVER INSTALLATION TO BE MADE PRIOR TO BOTTOM COVER INSTALLATION.
 - PROTECTIVE COVER TO BE GLUED TO BOTTOM COVER, AS SHOWN, USING 3M #77 SPRAY ADHESIVE, APPLIED TO PROTECTIVE COVER ONLY. POSITIONING TO BE ACHIEVED BY USE OF A JIG.
 - THE USE OF MANUFACTURING FIXTURES MAY BE REQUIRED FOR PROPER ALIGNMENT OF CERTAIN ITEMS DURING ASSEMBLY.

DOCUMENT CONTROL BLOCK: 080-04356	
SHEET	REVISION
1 OF 5	1
2 OF 5	0
3 OF 5	0
4 OF 5	0
5 OF 5	1

QTY REQD	CODE IDENT	PART OR IDENTIFYING NO	NOMENCLATURE OR DESCRIPTION	MATERIAL SPECIFICATION
PARTS LIST				
UNLESS OTHERWISE SPECIFIED DIMENSIONS ARE IN INCHES TOLERANCES ARE FRACTIONS DECIMALS ANGLES .XX .XXX .XXX			CONTRACT NO.	
APPROVALS		DATE		
DRAWN	<i>[Signature]</i>	6/20/85		
CHECKED	<i>[Signature]</i>	6/10/85		
ISSUED	<i>[Signature]</i>	19 Aug 85		
MATERIAL		FINISH		
M70		DO NOT SCALE DRAWING		
NEXT ASSY		USED ON		
APPLICATION		DO NOT SCALE DRAWING		

lexicon
 ASSEMBLY DRAWING,
 CHASSIS M70
 DWG NO. 080-04356
 SHEET 1 OF 5

1977A-018

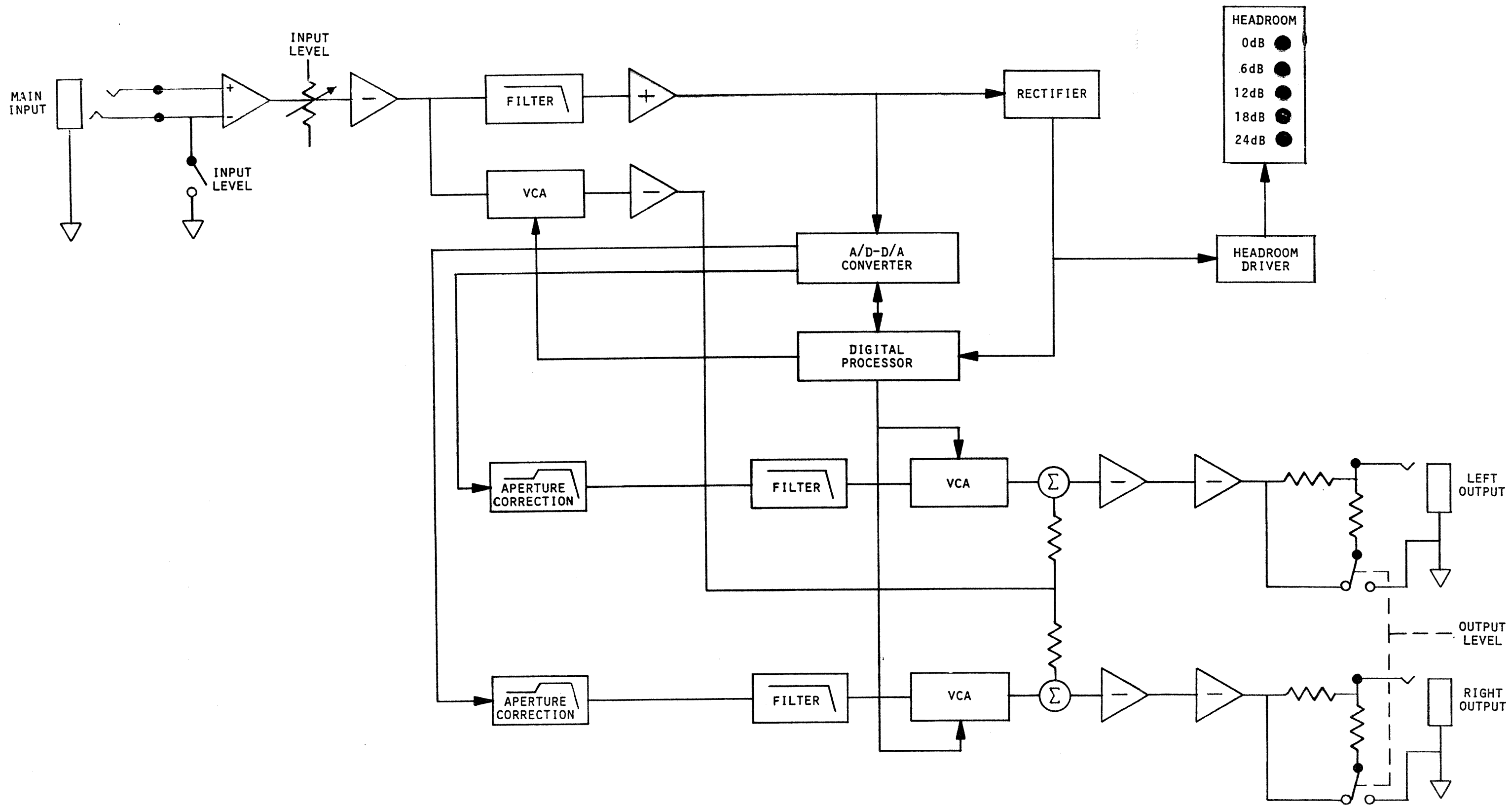


REVISIONS			
REV.	DESCRIPTION	DATE	APPROVED
0	RELEASE FOR PRODUCTION	19 Aug 75	<i>[Signature]</i>

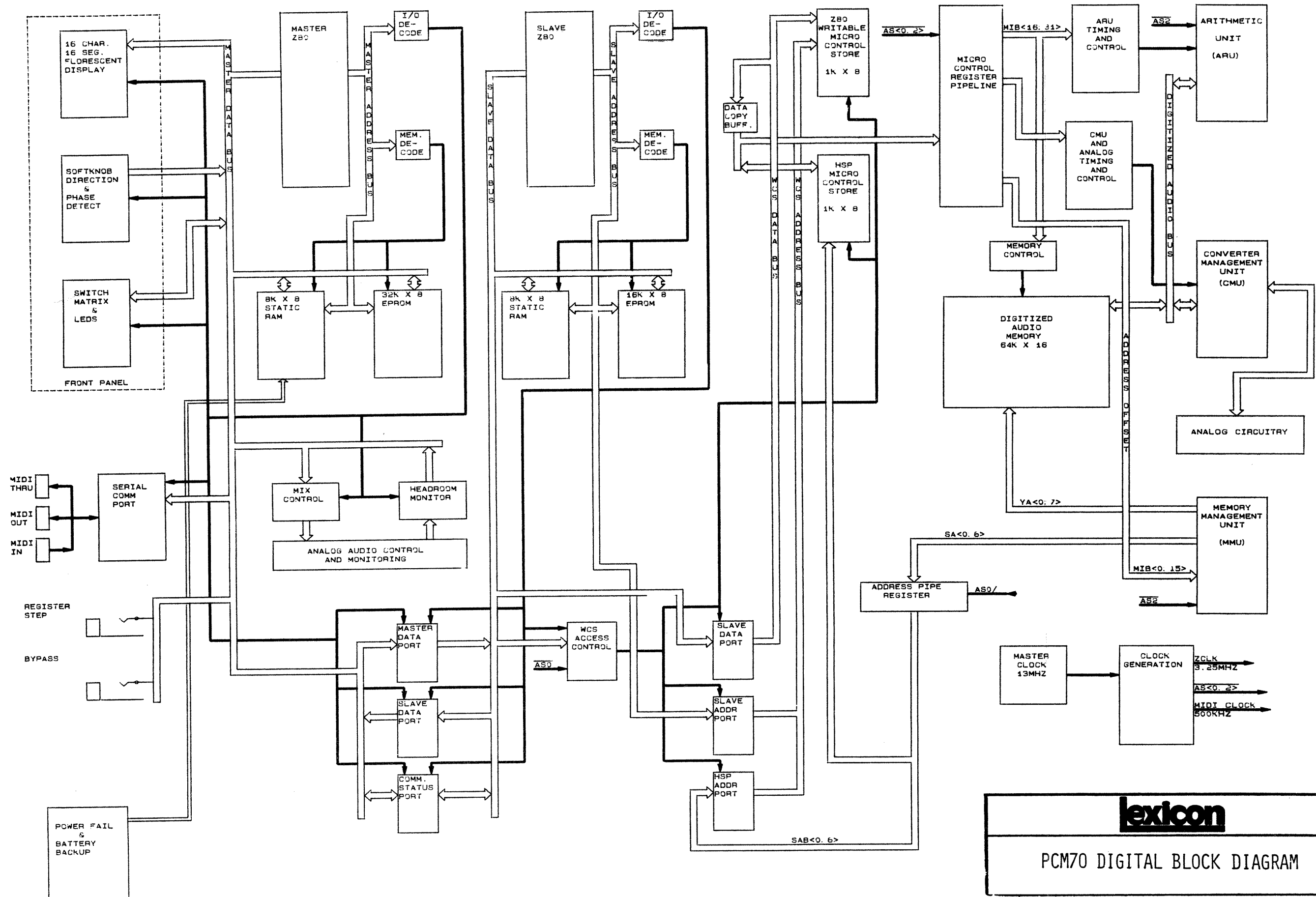
QTY	CODE	PART OR	NOMENCLATURE	MATERIAL
REQD	IDENT	IDENTIFYING NO	OR DESCRIPTION	SPECIFICATION
PARTS LIST				
UNLESS OTHERWISE SPECIFIED DIMENSIONS ARE IN INCHES TOLERANCES ARE: FRACTIONS DECIMALS ANGLES 30X		CONTRACT NO.		
APPROVALS		DATE		
DRAWN <i>[Signature]</i>		6/30/75		
CHECKED <i>[Signature]</i>		6/1/75		
ISSUED <i>[Signature]</i>		11/1/75		
MATERIAL		SIZE / FSCM NO.		
FINISH		DWG. NO.		
NEXT ASSY		REV.		
USED ON		080-04356 0		
APPLICATION		SCALE 1/2 SHEET 2 OF 5		

lexicon
ASSEMBLY DRAWING,
CHASSIS M70

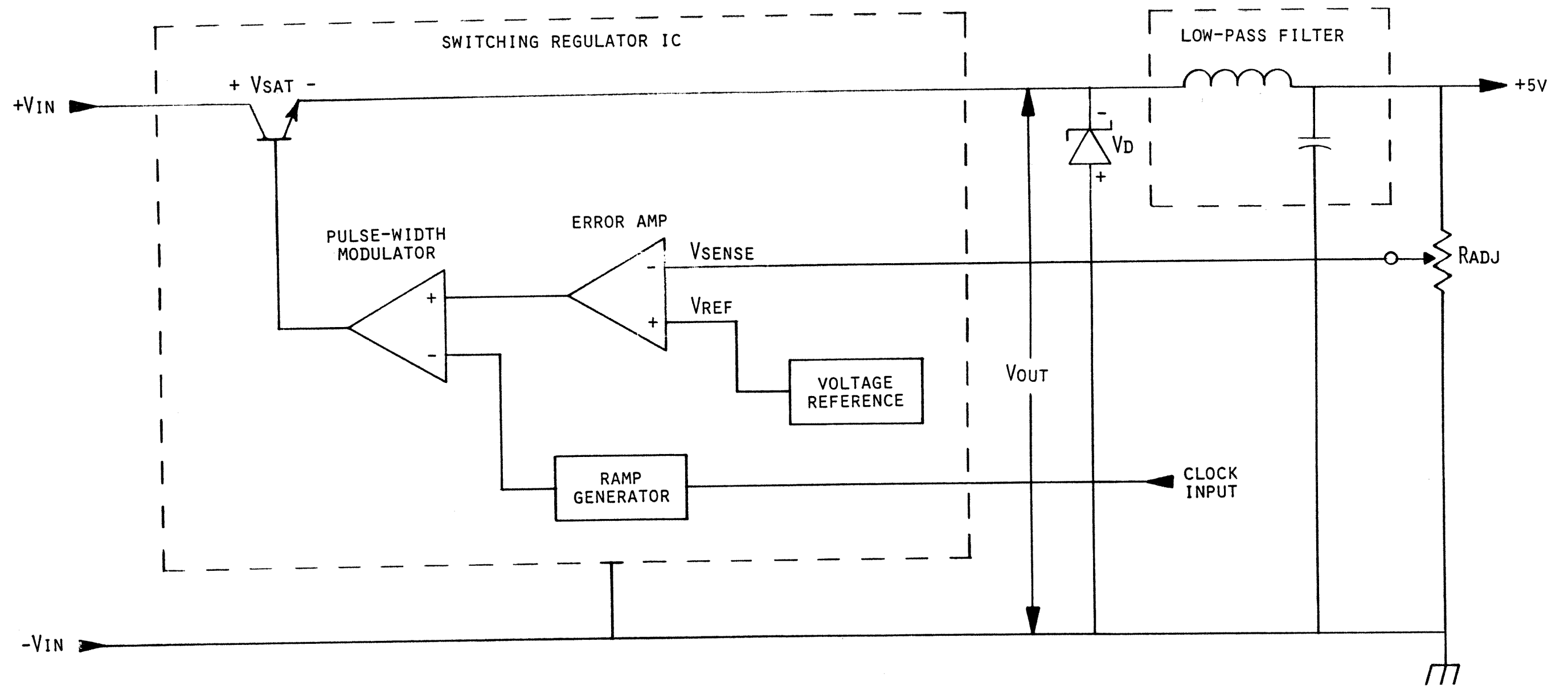
STANDARD INC. 011110



lexicon
PCM70 ANALOG BLOCK DIAGRAM



lexicon
PCM70 DIGITAL BLOCK DIAGRAM

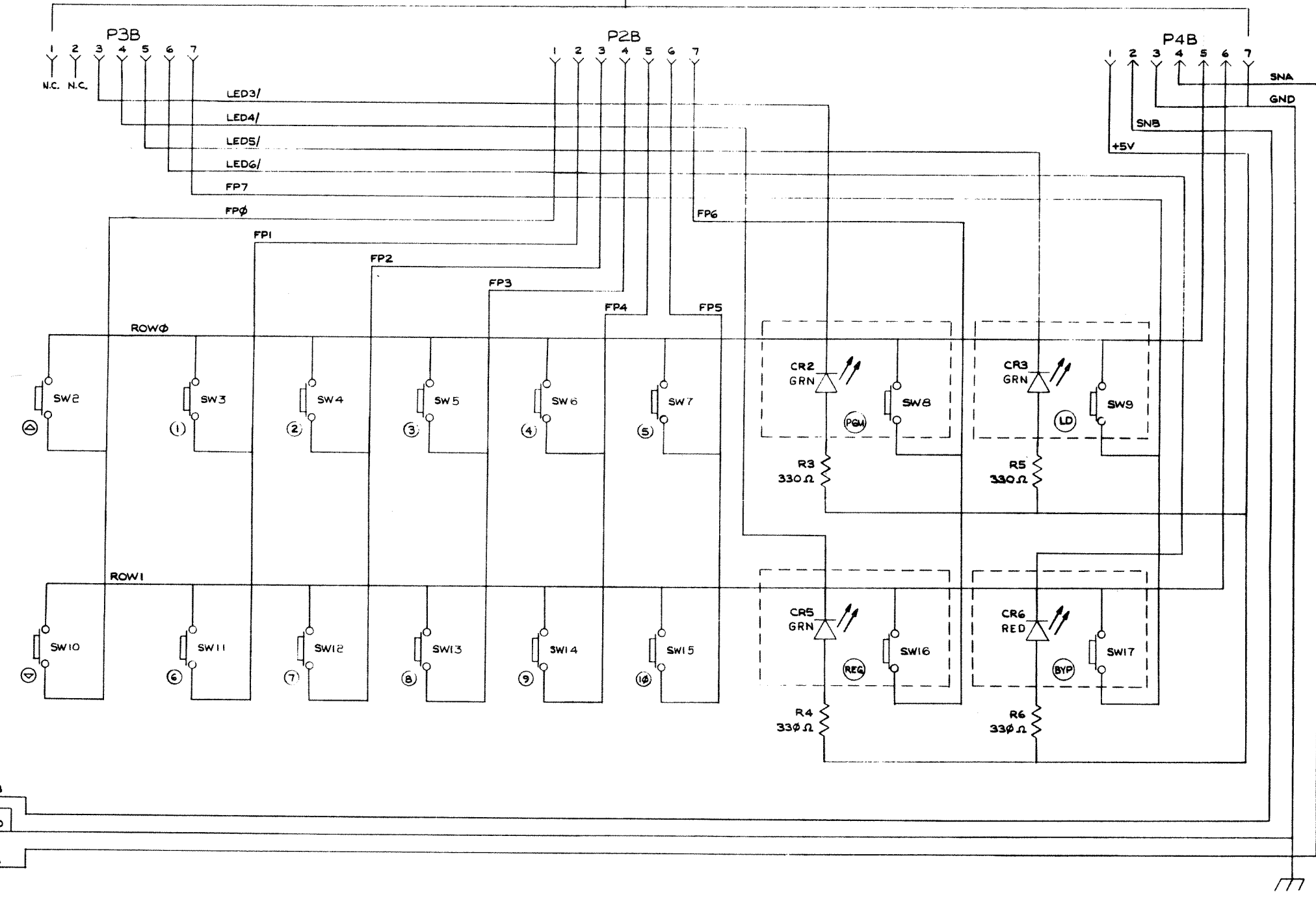


lexicon
 SWITCHING SUPPLY
 SIMPLIFIED BLOCK DIAGRAM

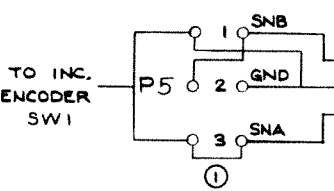
8 7 6 5 4 3 2 1

FROM MOTHER BOARD
SCHEMATIC #060-04146

REVISIONS			
REV.	DESCRIPTION	DATE	APPROVED
0	RELEASE FOR PROTOTYPE	5 APR 85	D.A.P.
1	RELEASE FOR PRODUCTION	2 JUL 85	D.A.P.
2	DELETED CR1, CR4, R1, AND R2, TO BE OPTIONAL, ALSO SWITCHED P2B AND P3B DESIGNATIONS, PER ECO #850724-00	7/29/85	D.A.P. 1 AUG 85
3	DELETED NOTE 1 AND FIXED SW6 AND SW7 PER ECO #850819-00	8/23/85	D.A.P. 8/23/85



NOTES
① LEFT 3 PADS ARE FOR PANASONIC ENCODER AND RIGHT 3 PADS ARE FOR ALPS ENCODER.



QTY	CODE	PART OR IDENTIFYING NO	NOMENCLATURE OR DESCRIPTION	MATERIAL SPECIFICATION
PARTS LIST				
UNLESS OTHERWISE SPECIFIED DIMENSIONS ARE IN INCHES TOLERANCES ARE: FRACTIONS DECIMALS ANGLES		CONTRACT NO.		
MATERIAL		APPROVALS	DATE	lexicon SCHEMATIC, FRONT PANEL BD., PCM70
NEXT ASSY USED ON		DRAWN	3/2/85	
FINISH		CHECKED	3/22/85	
APPLICATION		ISSUED	7/2/85	REV. 3
DO NOT SCALE DRAWING		SCALE		DWG. NO. 060-04308
				SHEET 1 OF 1

8 7 6 5 4 3 2 1

8

7

6

5

4

3

2

1

REVISIONS			
REV.	DESCRIPTION	DATE	APPROVED
0	RELEASE FOR PRODUCTION	11 Aug 85	<i>[Signature]</i>

D

D

C

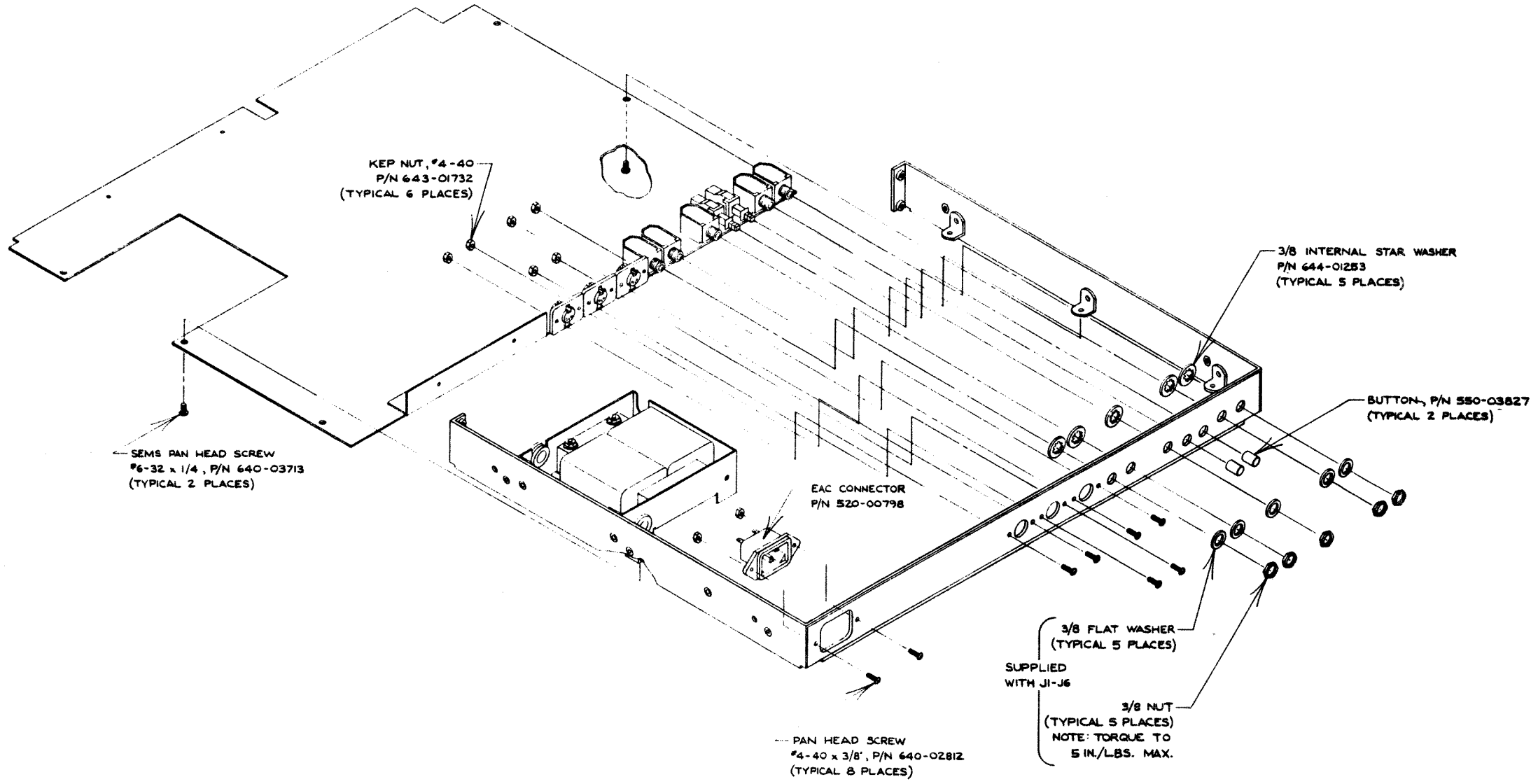
C

B

B

A

A

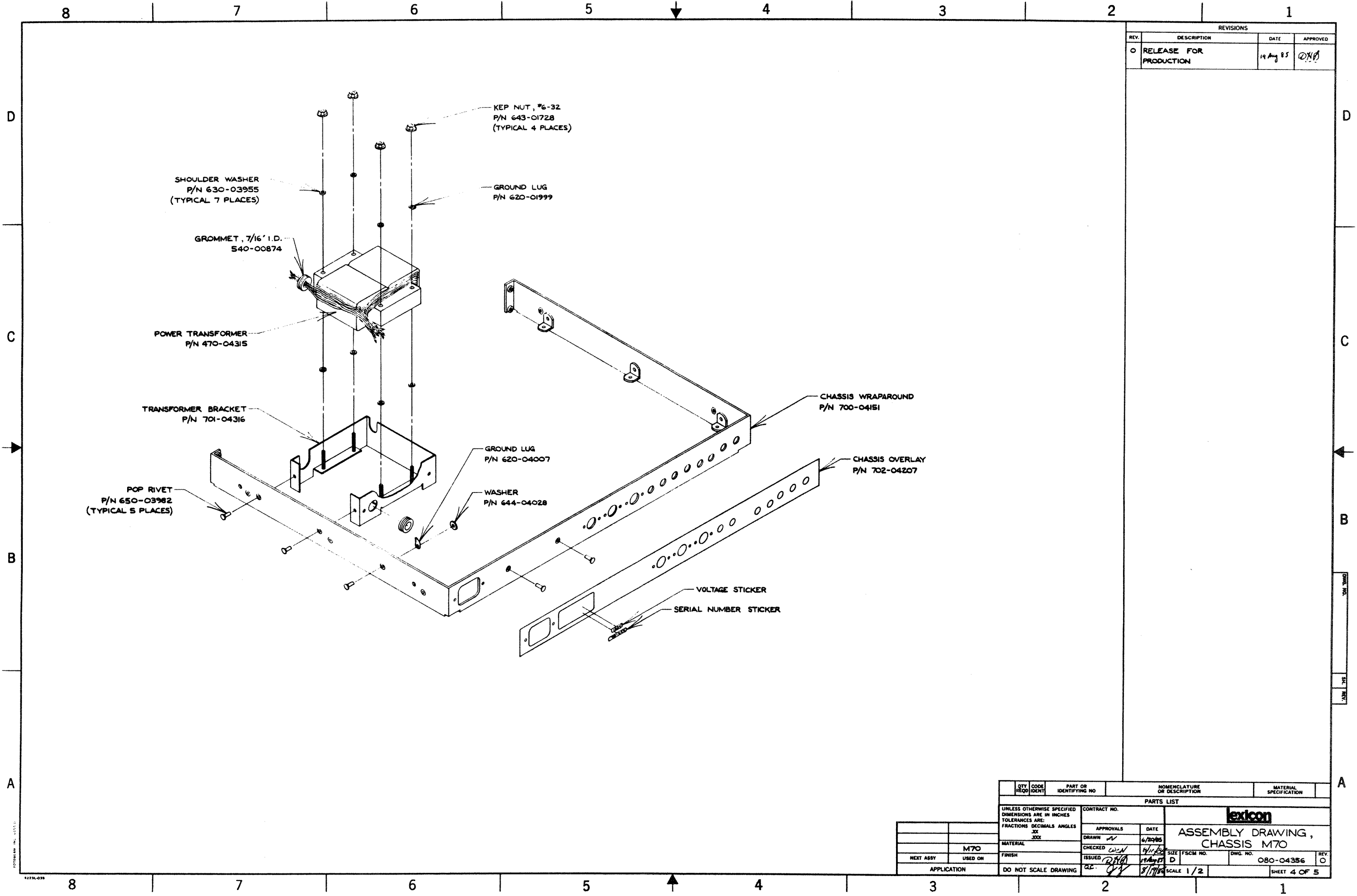


QTY	CODE	PART OR IDENTIFYING NO	NOMENCLATURE OR DESCRIPTION	MATERIAL SPECIFICATION
PARTS LIST				
UNLESS OTHERWISE SPECIFIED DIMENSIONS ARE IN INCHES TOLERANCES ARE:		CONTRACT NO.		
FRACTIONS	DECIMALS	ANGLES	APPROVALS	DATE
			<i>[Signature]</i>	6/20/85
MATERIAL		DRAWN		
M70		<i>[Signature]</i>		
NEXT ASSY USED ON		CHECKED		
		<i>[Signature]</i>		
APPLICATION		ISSUED		
DO NOT SCALE DRAWING		<i>[Signature]</i>		
		G. C. <i>[Signature]</i>		
		SCALE 1/2		
		SHEET 3 OF 5		

lexicon
 ASSEMBLY DRAWING,
 CHASSIS M70

SIZE FSCM NO. DWG NO. 080-04356 REV. 0

9224L 035



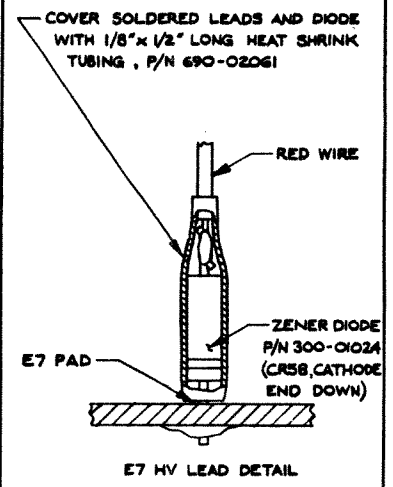
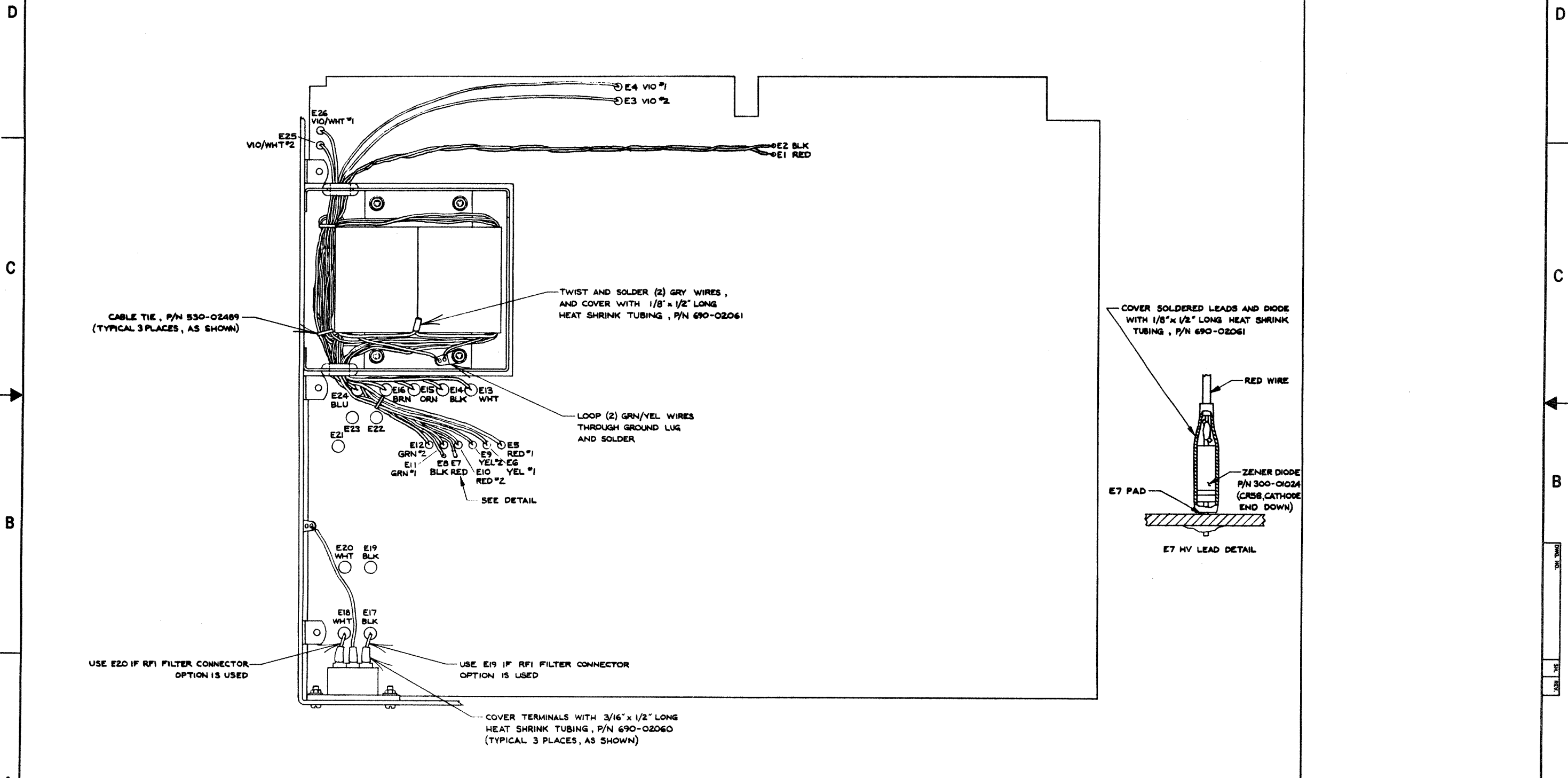
REVISIONS			
REV.	DESCRIPTION	DATE	APPROVED
0	RELEASE FOR PRODUCTION	19 Aug 85	<i>DNB</i>

QTY	CODE	PART OR	NOMENCLATURE	MATERIAL
REQD	IDENT	IDENTIFYING NO	OR DESCRIPTION	SPECIFICATION
PARTS LIST				
UNLESS OTHERWISE SPECIFIED DIMENSIONS ARE IN INCHES		CONTRACT NO.		
FRACTIONS DECIMALS ANGLES		lexicon		
XX XXX		APPROVALS	DATE	ASSEMBLY DRAWING, CHASSIS M70
		<i>WJ</i>	6/20/85	
MATERIAL		CHECKED	DATE	SIZE FSCM NO. DWG. NO.
M70		<i>WJ</i>	6/11/85	D O80-04356
NEXT ASSY USED ON		ISSUED	DATE	REV. O
		<i>WJ</i>	6/11/85	
APPLICATION		SCALE	SCALE 1/2	SHEET 4 OF 5
DO NOT SCALE DRAWING		DATE	8/17/85	

FORMER INC. 1272L-028

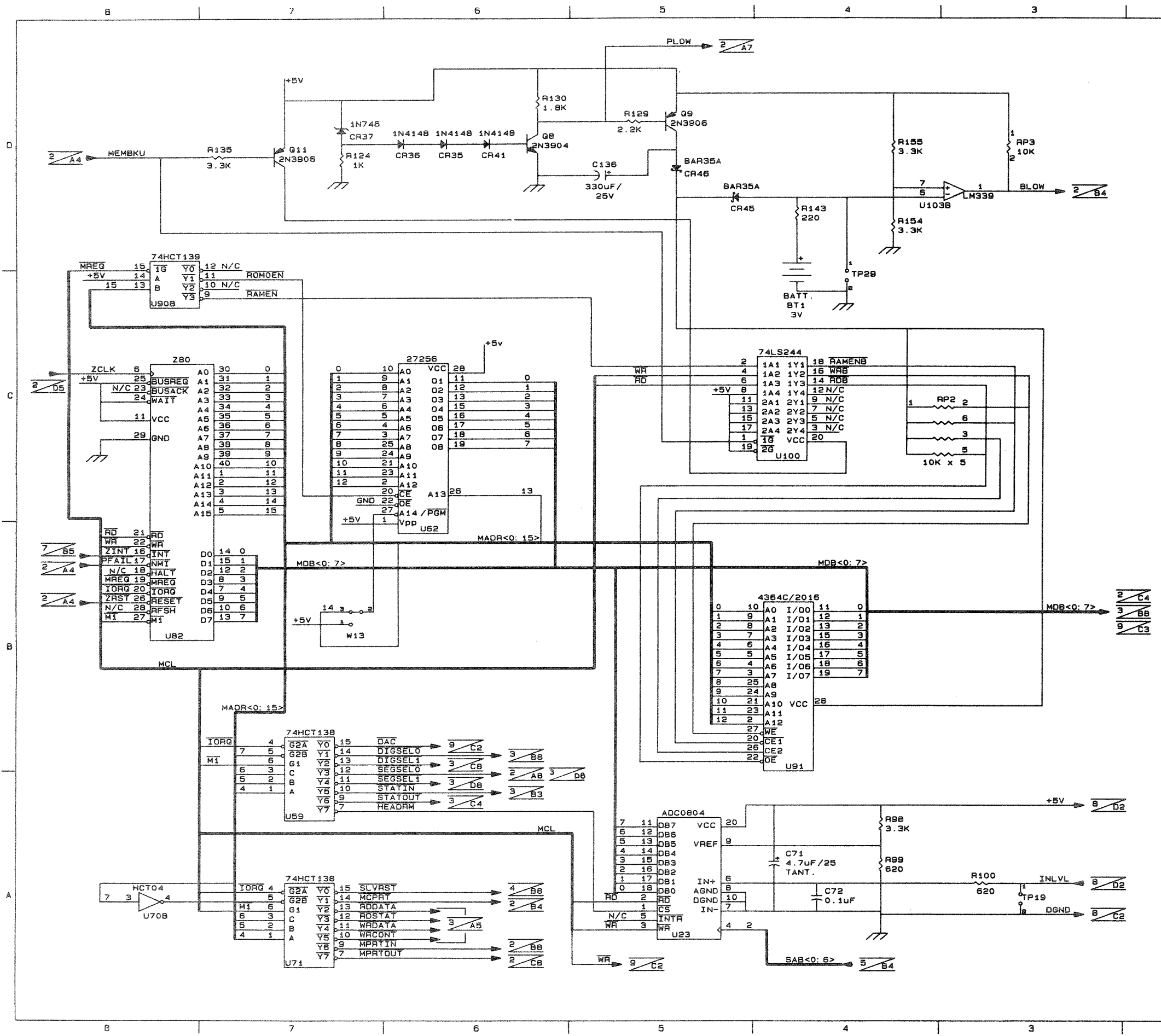
8 7 6 5 4 3 2 1

REVISIONS			
REV.	DESCRIPTION	DATE	APPROVED
0	RELEASE FOR PRODUCTION	15 Aug 55	<i>[Signature]</i>
1	ADDED E7 CRSS LEAD DETAIL PER ECO # 85107-00	DWN 11/12/55 G.C. # 11/12/55	<i>[Signature]</i>



QTY	CODE	PART OR	NOMENCLATURE	MATERIAL
REQD	IDENT	IDENTIFYING NO	OR DESCRIPTION	SPECIFICATION
PARTS LIST				
UNLESS OTHERWISE SPECIFIED DIMENSIONS ARE IN INCHES. TOLERANCES ARE: FRACTIONS DECIMALS ANGLES .XX .XXX		CONTRACT NO.		
M70		lexicon		
NEXT ASSY USED ON		ASSEMBLY DRAWING, CHASSIS M70		
APPLICATION		DO NOT SCALE DRAWING		
		SCALE 1/1		
		SHEET 5 OF 5		

8 7 6 5 4 3 2 1

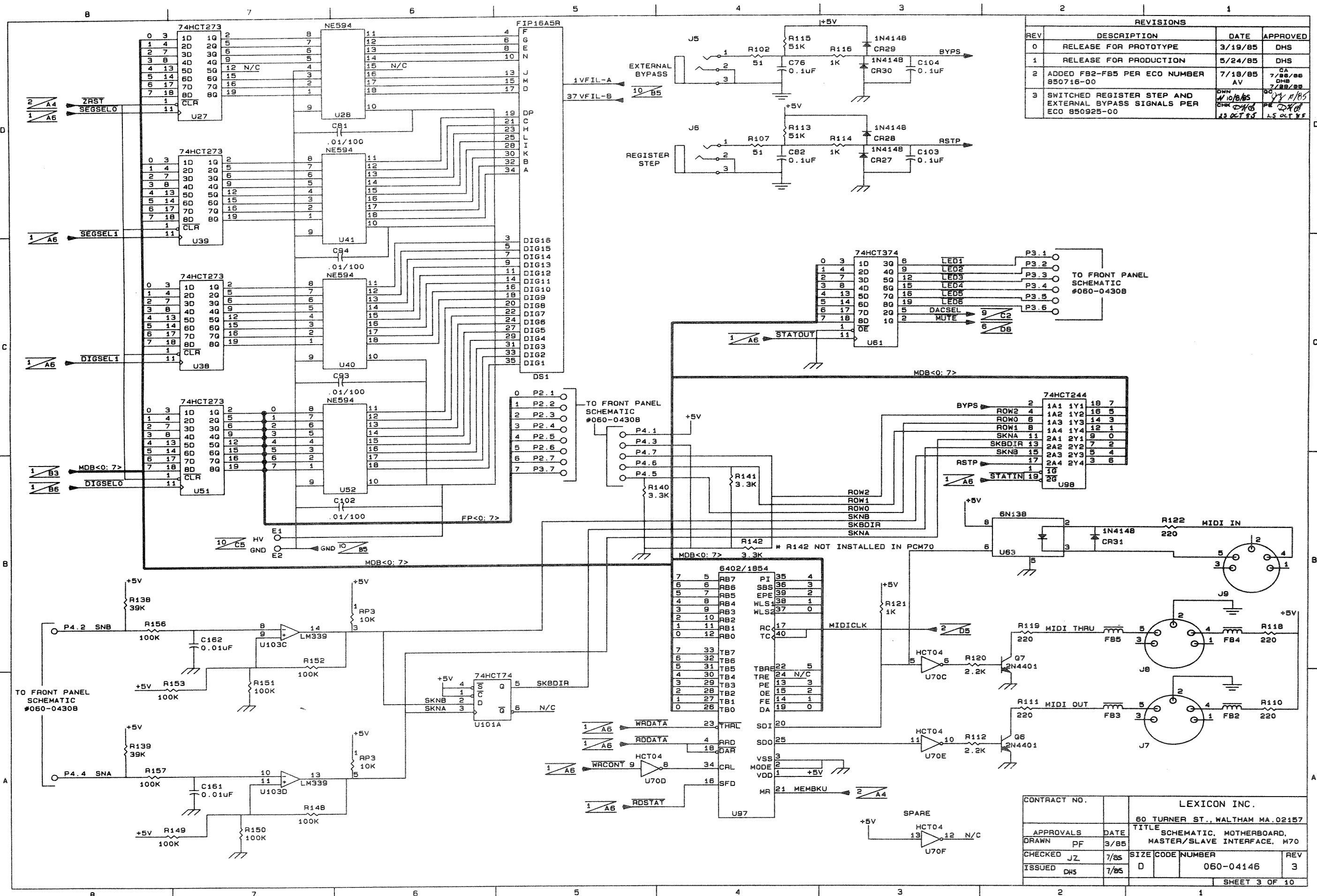


REVISIONS			
REV	DESCRIPTION	DATE	APPROVED
0	RELEASE FOR PROTOTYPE	3/19/85	DHS
1	RELEASE FOR PRODUCTION	5/24/85	
2	CHANGED U62 FROM 2764 TO 27256 AND CONNECTED PINS 2 AND 3 OF W13. ALSO UPDATED DOCUMENT CONTROL BLOCK PER ECO NUMBER 850216-00	7/18/85 8/23/85	CA 8/27/85 DHS 8/28/85
3	ADDED BATTERY VOLTAGE AND ANALOG POWER GROUND TO NOTES. CHANGED VALUES OF R154 AND C71. UPDATED DOCUMENT CONTROL BLOCK PER ECO 850819-00	DWN AV 8/23/85	GC JZ 8/27/85
4	UPDATED DOCUMENT CONTROL BLOCK. SHEETS 1-3, 5-9 PER ECO 850925-00	DWN 10/6/85	GC 10/6/85
5	UPDATED DOCUMENT CONTROL BLOCK PER ECO 851107-00	DWN 11/11/85	GC 11/11/85
6	UPDATED DOCUMENT CONTROL BLOCK, SHEET 9, PER ECO 851219-00	DWN 12/12/85	GC 12/12/85

- NOTES**
- UNLESS OTHERWISE INDICATED, RESISTORS ARE 5%, 1/4W.
 - UNLESS OTHERWISE INDICATED, CAPACITORS ARE UF/V.
 - UNLESS OTHERWISE INDICATED, DIODES ARE IN4148.
 - ANALOG GROUND DIGITAL GROUND CHASSIS GROUND ANALOG PWR GND
 - 1 DENOTES SHEET NUMBER AND A2 INTERSECT COORDINATE.
 - ON BOARD CONNECTION-TO
ON BOARD CONNECTION-FROM
SOLDER CONNECTION

DOCUMENT CONTROL BLOCK: #060-04146	
SHEET NUMBER	REVISION NUMBER
1 OF 10	6
2 OF 10	3
3 OF 10	3
4 OF 10	3
5 OF 10	3
6 OF 10	3
7 OF 10	2
8 OF 10	3
9 OF 10	4
10 OF 10	3

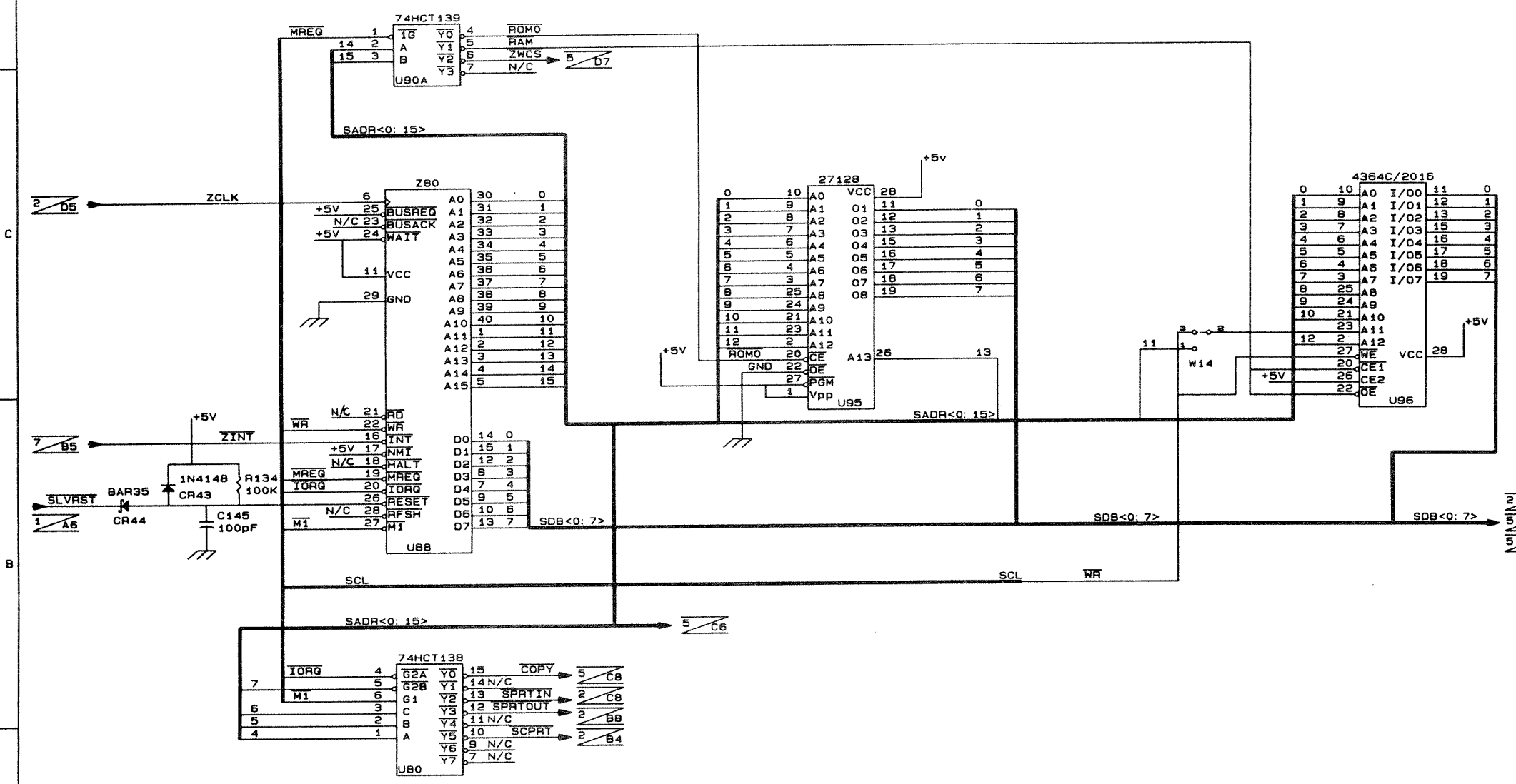
CONTRACT NO.		LEXICON INC.	
60 TURNER ST., WALTHAM MA 02157			
APPROVALS	DATE	TITLE	
DRAWN PF	3/85	SCHEMATIC, MOTHERBOARD,	
CHECKED JZ	1/85	MASTER PROCESSOR, M70	
ISSUED DHS	7/85	SIZE CODE NUMBER	REV
		D	060-04146 6
SHEET 1 OF 10			



REVISIONS			
REV	DESCRIPTION	DATE	APPROVED
0	RELEASE FOR PROTOTYPE	3/19/85	DHS
1	RELEASE FOR PRODUCTION	5/24/85	DHS
2	ADDED FB2-FB5 PER ECO NUMBER B50716-00	7/18/85	AV
3	SWITCHED REGISTER STEP AND EXTERNAL BYPASS SIGNALS PER ECO B50925-00	10/10/85	AV

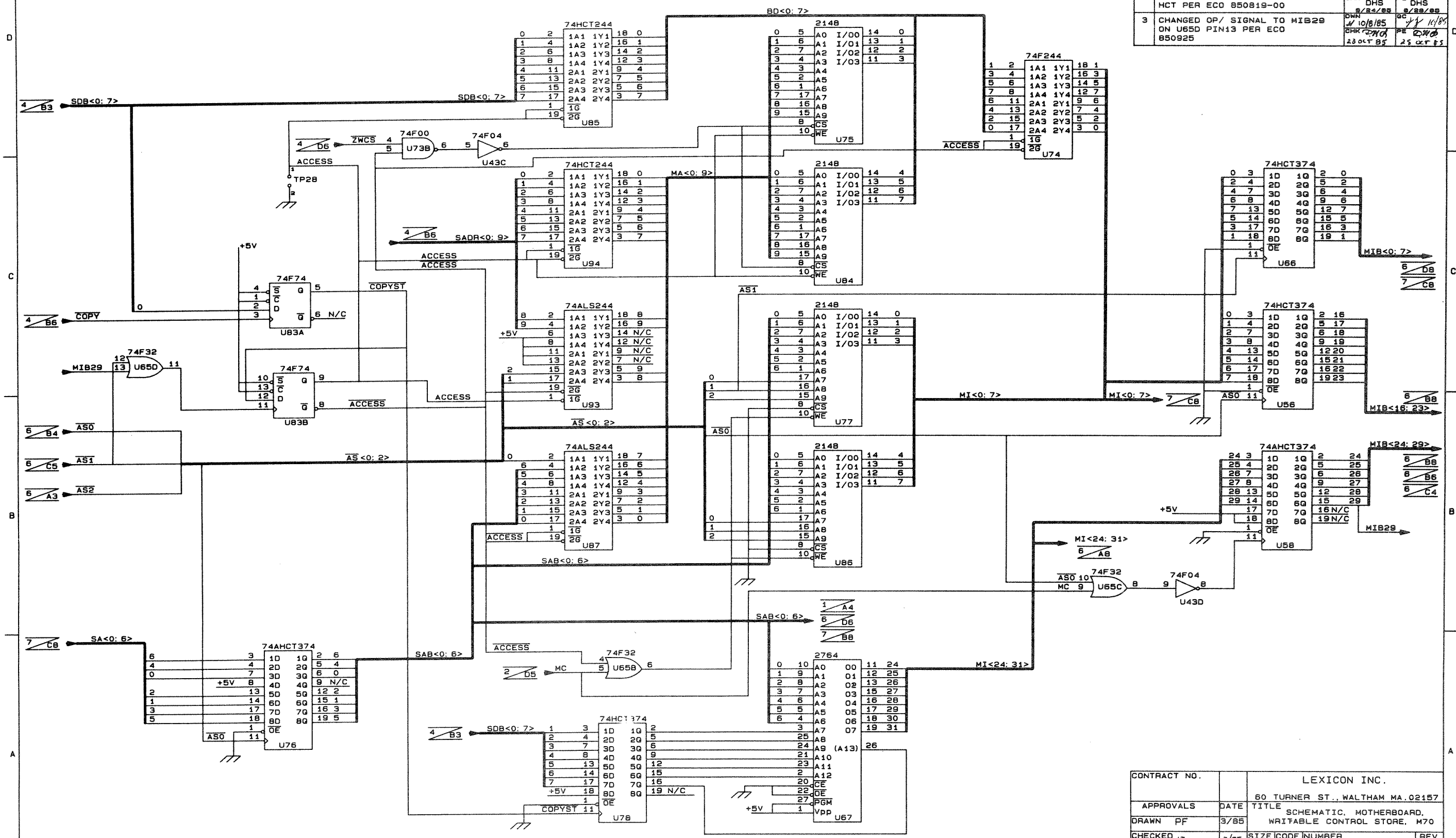
CONTRACT NO.		LEXICON INC.	
		60 TURNER ST., WALTHAM MA. 02157	
APPROVALS	DATE	TITLE	
DRAWN PF	3/85	SCHEMATIC, MOTHERBOARD, MASTER/SLAVE INTERFACE, M70	
CHECKED JZ	7/85	SIZE	CODE NUMBER
ISSUED DHS	7/85	D	060-04146
			REV 3
SHEET 3 OF 10			

REVISIONS			
REV	DESCRIPTION	DATE	APPROVED
0	RELEASE FOR PROTOTYPE	3/19/85	DHS
1	RELEASE FOR PRODUCTION	5/28/85	DHS
2	CHANGED U95 FROM 2764 TO 27128 PER ECO NUMBER 850716-00	7/18/85	CA 7/28/85 DHS AV 7/28/85
3	ADDED PIN 28 TO U96 AND CONNECTED PINS 2 AND 3 OF W14 PER ECO 850819-00	8/23/85	OWN AV 8/23/85 DHS DHS 8/23/85 8/23/85

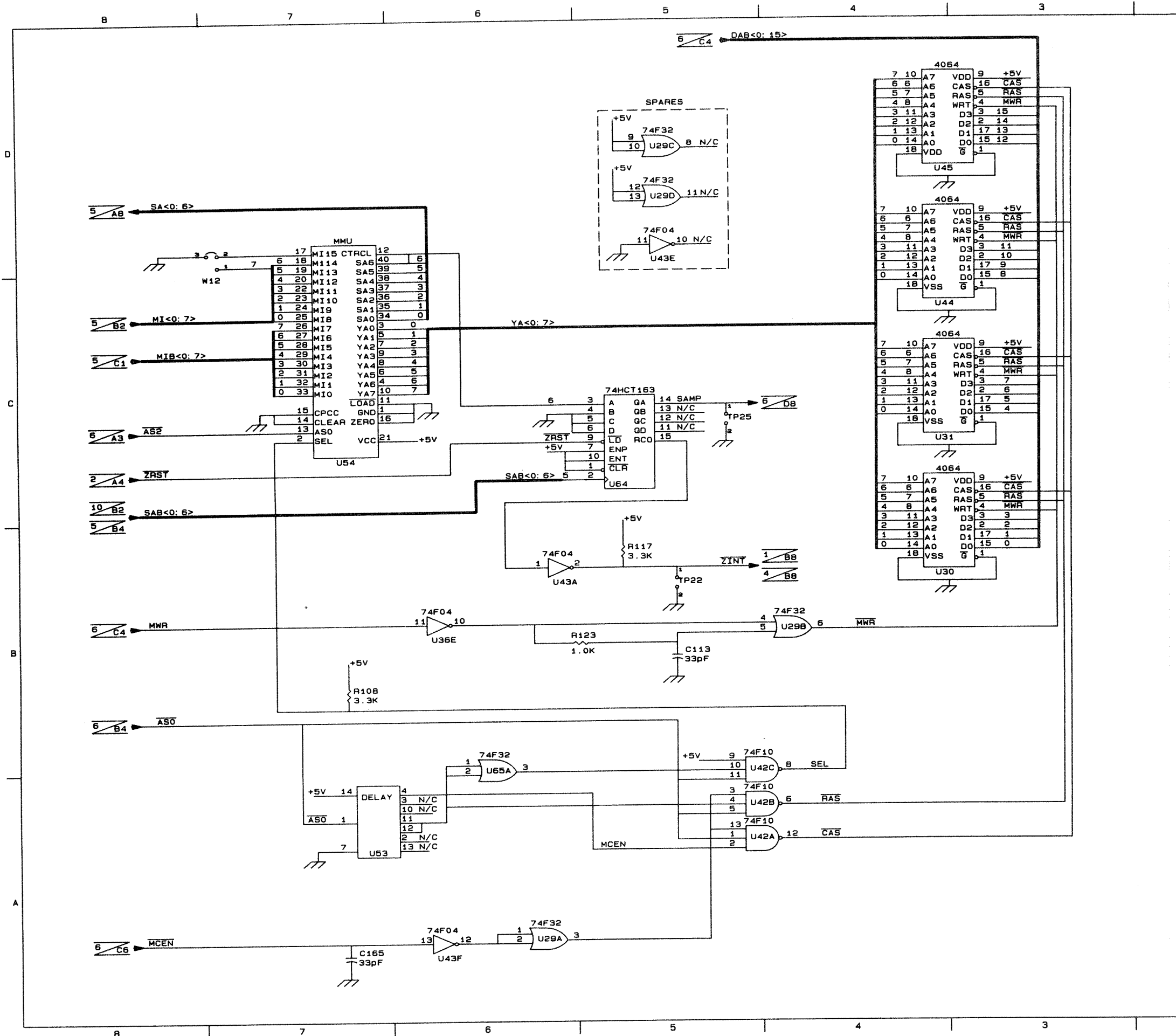


CONTRACT NO.		LEXICON INC.	
		80 TURNER ST., WALTHAM MA. 02157	
APPROVALS	DATE	TITLE	
DRAWN PF	3/85	SCHEMATIC, MOTHERBOARD, SLAVE PROCESSOR, M70	
CHECKED	7/85	SIZE	CODE NUMBER
ISSUED		D	060-04146
			REV 3
SHEET 4 OF 10			

REVISIONS			
REV	DESCRIPTION	DATE	APPROVED
0	RELEASE FOR PROTOTYPE	3/18/85	DHS
1	RELEASE FOR PRODUCTION	6/25/85	DHS
2	CHANGED U58, U76 FROM ALS TO AHCT AND U85, U84 FROM ALS TO HCT PER ECO 850819-00	8/23/85	DHS
3	CHANGED OP/ SIGNAL TO MIB29 ON U65D PIN13 PER ECO 850925	10/10/85	DHS



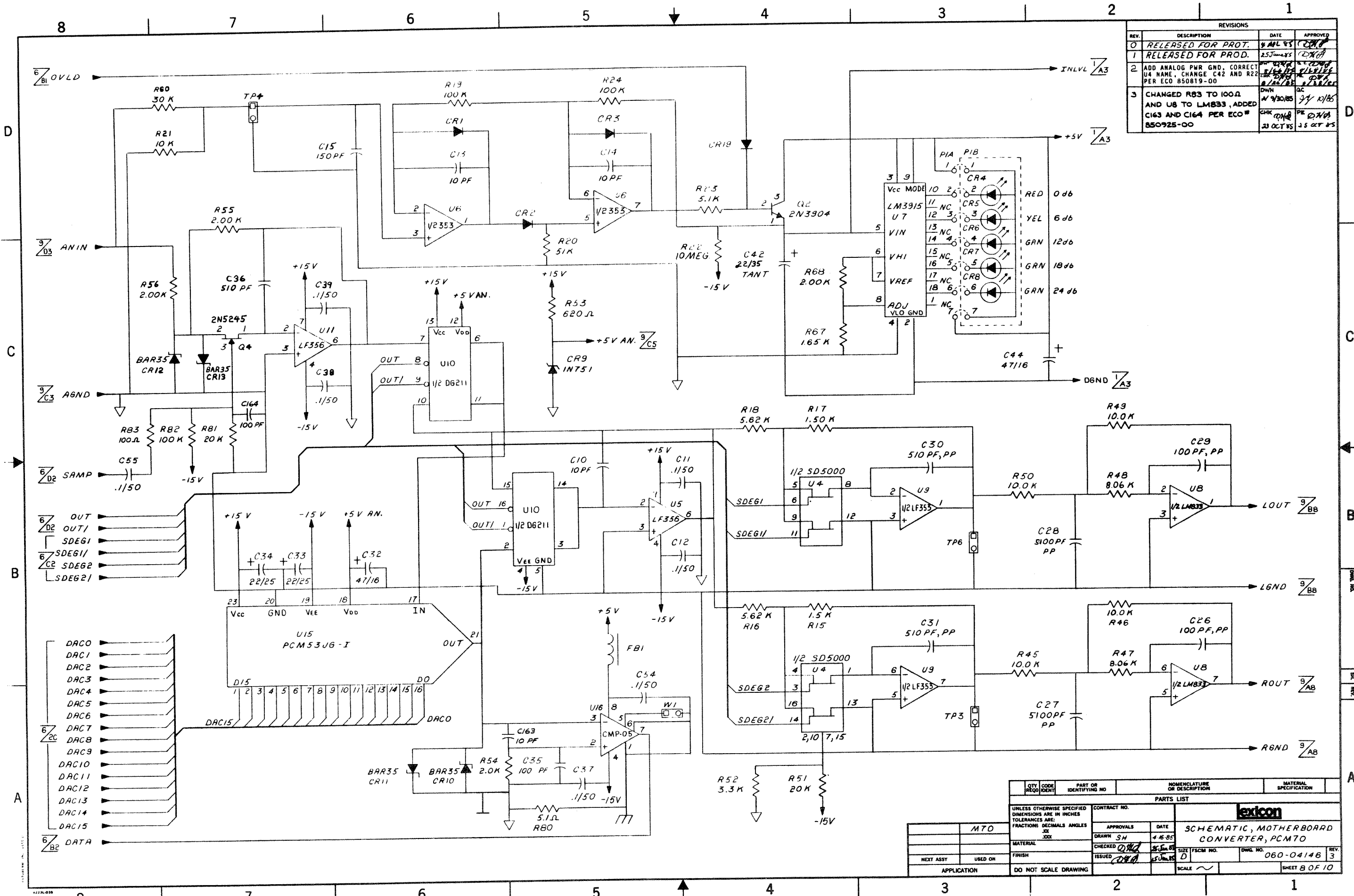
CONTRACT NO.		LEXICON INC.		
		60 TURNER ST., WALTHAM MA. 02157		
APPROVALS	DATE	TITLE		
DRAWN PF	3/85	SCHEMATIC, MOTHERBOARD, WRITABLE CONTROL STORE, M70		
CHECKED JZ	7/85	SIZE	CODE	NUMBER
ISSUED DHS	7/85	D		060-04146
				REV 3
SHEET 5 OF 10				



REVISIONS			
REV	DESCRIPTION	DATE	APPROVED
0	RELEASE FOR PROTOTYPE	3/19/85	DHS
1	RELEASE FOR PRODUCTION	5/28/85 JWZ 8/24/85	DHS 6/25/85
2	REDRAWN WITH CHANGES. DELETED U32, U33, U46, U47, W10 AND W11. CHANGED U30, U31, U44 AND U45 TO 4064. ADDED C165 AND SPARES PER ECO NUMBER 850925-00	10/8/85 DHS 23 OCT 85	9/14/85 DHS 25 OCT 85

CONTRACT NO.		LEXICON INC.	
		60 TURNER ST., WALTHAM MA. 02157	
APPROVALS	DATE	TITLE SCHEMATIC, MOTHERBOARD, HIGH SPEED PROCESSOR-MMU, M70	
DRAWN PF	3/85		
CHECKED JWZ	7/85	SIZE	CODE NUMBER
ISSUED DHS	7/85	D	060-04146
			REV 2
SHEET 7 OF 10			

REVISIONS			
REV.	DESCRIPTION	DATE	APPROVED
0	RELEASED FOR PROT.	8 JUL 85	(Signature)
1	RELEASED FOR PROD.	25 JUN 85	(Signature)
2	ADD ANALOG PWR GND, CORRECT U4 NAME, CHANGE C42 AND R22 PER ECO 850819-00	8/16/85	(Signature)
3	CHANGED R83 TO 100Ω AND U8 TO LM833, ADDED C163 AND C164 PER ECO # 850925-00	11/30/85	(Signature)



QTY REQD	CODE IDENT	PART OR IDENTIFYING NO	NOMENCLATURE OR DESCRIPTION	MATERIAL SPECIFICATION
PARTS LIST				
UNLESS OTHERWISE SPECIFIED DIMENSIONS ARE IN INCHES TOLERANCES ARE: FRACTIONS DECIMALS ANGLES .XX .XXX .XXX				
MATERIAL		CONTRACT NO.		
FINISH		APPROVALS		
NEXT ASSY		DATE		
APPLICATION		DRAWN SH 4-8-85		
DO NOT SCALE DRAWING		CHECKED DWA 8/16/85		
		ISSUED DWA 8/16/85		
		SIZE 15CM NO.		
		DWG. NO. 060-04146		
		REV. 3		
		SHEET 8 OF 10		

