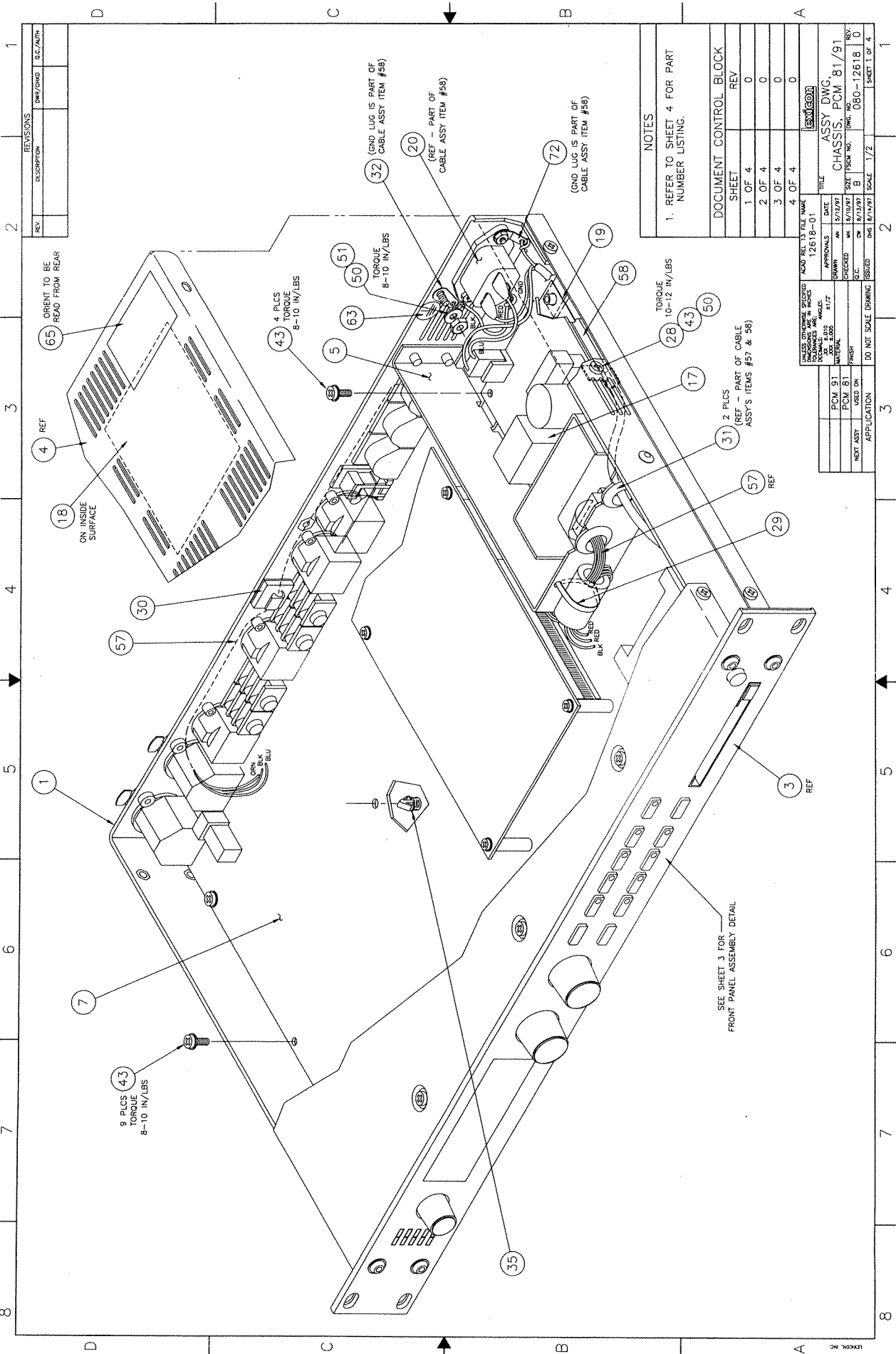


X I C O N
PCB NO. PCM-61/91 REV. 3
COMPONENT LAYOUT
SCALE: 1:1 SHEET 1 OF 1



REV.	DESCRIPTION	DWG/CHG	O.C./AUTH

NOTES
1. REFER TO SHEET 4 FOR PART NUMBER LISTING.

DOCUMENT CONTROL BLOCK		
SHEET	REV	
1 OF 4	0	
2 OF 4	0	
3 OF 4	0	
4 OF 4	0	

UNLESS OTHERWISE SPECIFIED	APPROVALS	DATE
ASSEMBLY		
TESTING		
FINISH		

FILE NAME	SCALE	SCALE
12618-01	1/2"	1/2"

APPLICATION	USED ON	DO NOT SCALE DRAWING

FILE NAME	SCALE	SCALE
12618-01	1/2"	1/2"

FILE NAME	SCALE	SCALE
12618-01	1/2"	1/2"

ON INSIDE SURFACE

ON BLACK BLU

ON GRAY TO BE REAR FROM REAR

SEE SHEET 3 FOR FRONT PANEL ASSEMBLY DETAIL

2 PICS (REF) - PART OF CABLE ASSY'S ITEMS #57 & 58

4 PICS TORQUE 8-10 IN/LBS

8 PICS TORQUE 8-10 IN/LBS

4 PICS TORQUE 8-10 IN/LBS

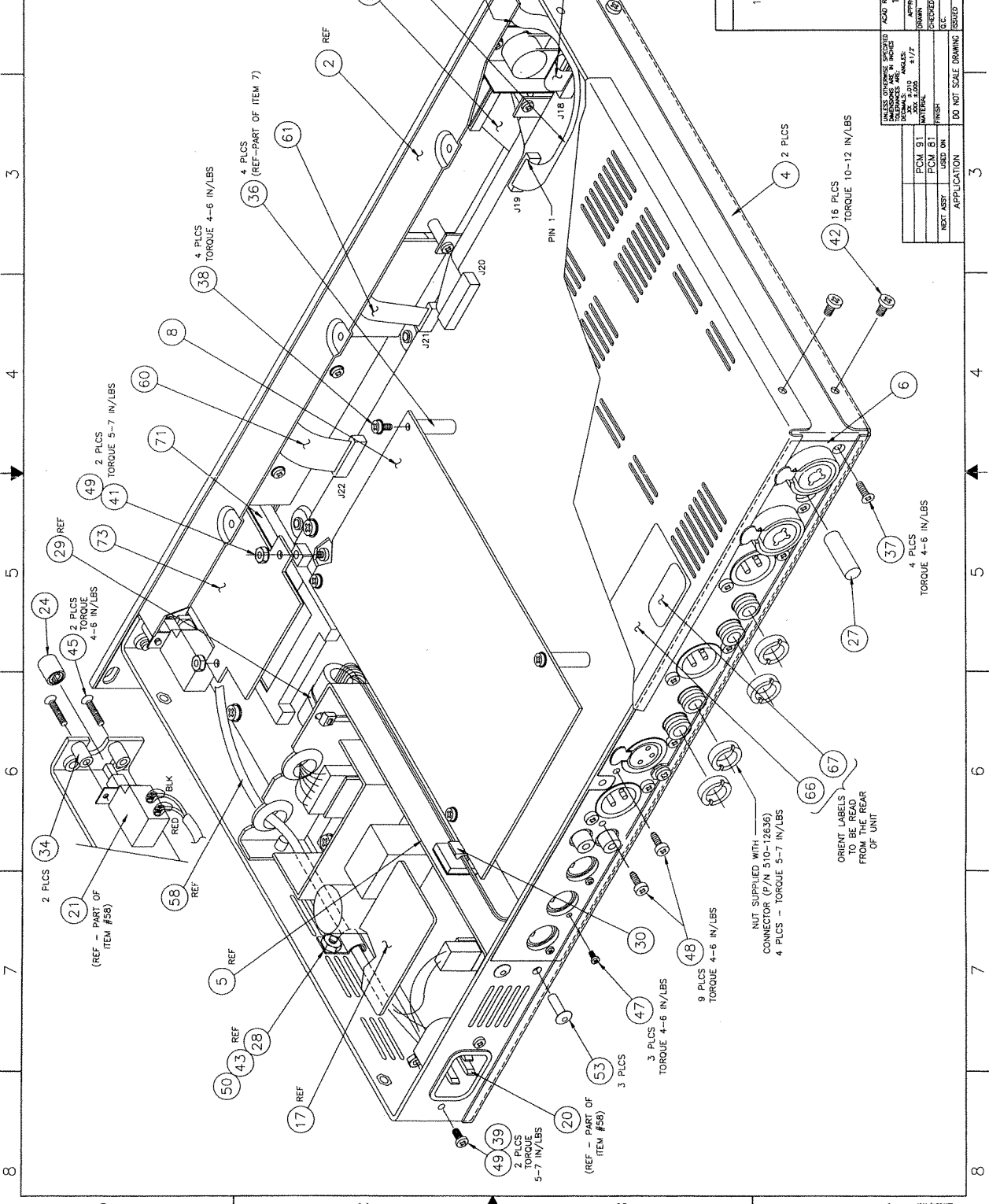
2 PICS TORQUE 10-12 IN/LBS

(GND LUG IS PART OF CABLE ASSY ITEM #58)

(GND LUG IS PART OF CABLE ASSY ITEM #58)

2 PICS TORQUE 10-12 IN/LBS

REV.	DESCRIPTION	DWG/CMO	DWG/ACTN



NOTES
1. REFER TO SHEET 4 FOR PART NUMBER LISTING.

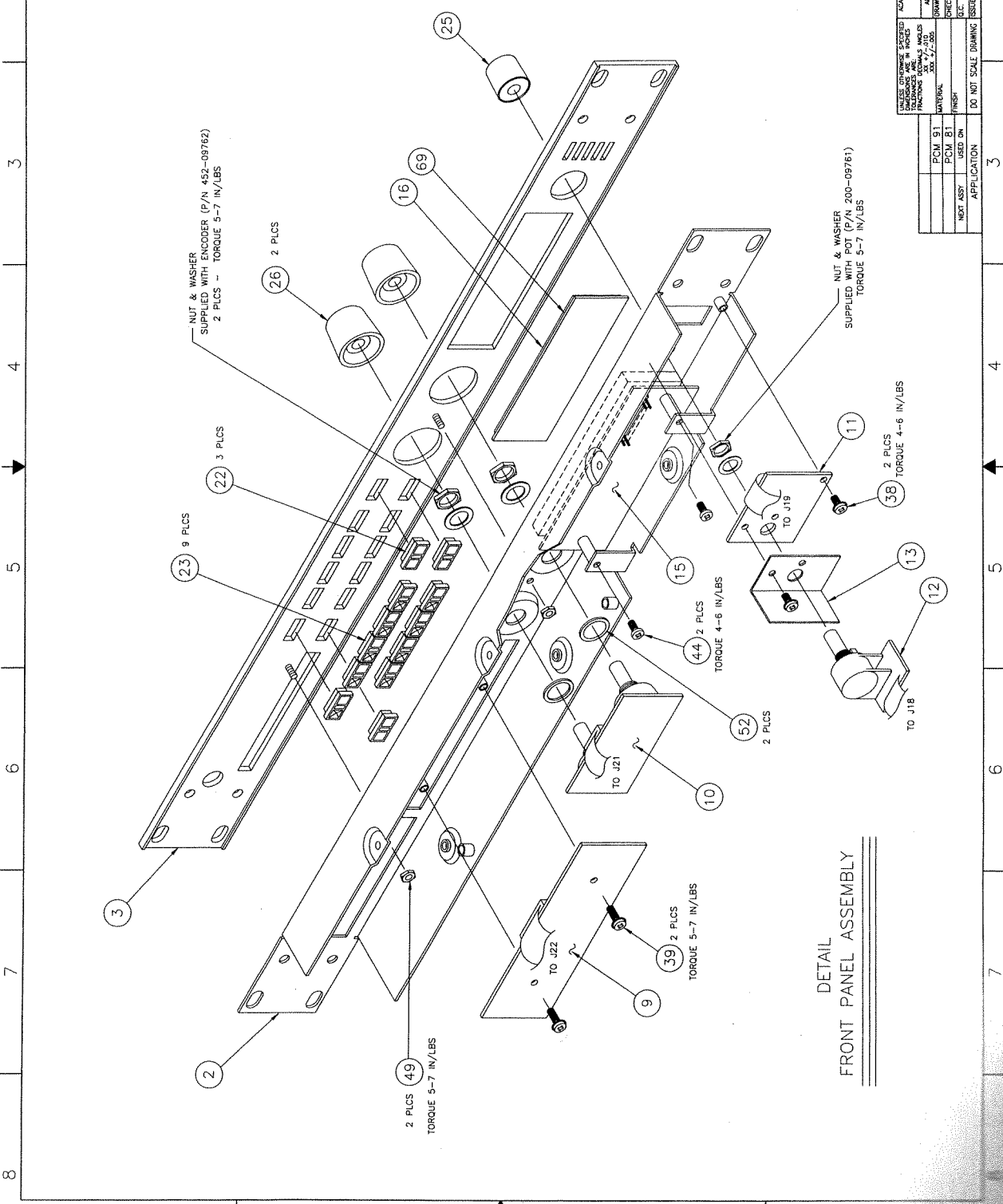
UNLESS OTHERWISE SPECIFIED DIMENSIONS ARE IN INCHES	SCALE: 1/1"
DATE: 12/18/02	FILE NAME: 12618-02
APPROVALS:	TITLE: ASSY DWG
DRAWN: AN 12/18/02	CHASSIS: PCM 81/91
CHECKED: MK 12/18/02	SIZE: 11x17
DESIGNED: CW 12/18/02	FORM NO: 080-12618-0
ISSUED: DMS 12/18/02	SCALE: 1/1"
DO NOT SCALE DRAWING	SHEET 2 OF 4

PCM 91	APPLICATION
PCM 81	
NEXT ASSY	
USED ON	

NUT SUPPLIED WITH CONNECTOR (P/N 510-12636)
4 PLCS - TORQUE 5-7 IN/LBS

ORIENT LABELS TO BE READ FROM THE REAR OF UNIT

REV.	DESCRIPTION	DATE	BY



NOTES

- REFER TO SHEET 4 FOR PART NUMBER LISTING.

DETAIL
FRONT PANEL ASSEMBLY

REV.	DESCRIPTION	DATE	BY

APPROVED	DATE

APPROVED	DATE

APPROVED	DATE

APPROVED	DATE

APPROVED	DATE

APPROVED	DATE

APPROVED	DATE

APPROVED	DATE

APPROVED	DATE

APPROVED	DATE

APPROVED	DATE

TITLE	ASSY DWG, CHASSIS, PCM 81/91
DATE	5/19/91
DESIGNED	BY
CHECKED	BY
SCALE	1/2
SHEET	3 OF 4

APPROVALS	DATE

APPROVALS	DATE

APPROVALS	DATE

APPROVALS	DATE

APPROVALS	DATE

APPROVALS	DATE

12618-10.5

DO NOT SCALE DRAWING

PCB 91
PCM 81
NEXT ASSY USED ON

APPLICATION

SCALE 1/2

SHEET 3 OF 4

EXCEL

ASSY DWG, CHASSIS, PCM 81/91

DATE 5/19/91

DESIGNED BY

CHECKED BY

SCALE 1/2

SHEET 3 OF 4

EXCEL

ASSY DWG, CHASSIS, PCM 81/91

DATE 5/19/91

DESIGNED BY

CHECKED BY

SCALE 1/2

SHEET 3 OF 4

EXCEL

ASSY DWG, CHASSIS, PCM 81/91

DATE 5/19/91

DESIGNED BY

CHECKED BY

SCALE 1/2

SHEET 3 OF 4

EXCEL

ASSY DWG, CHASSIS, PCM 81/91

DATE 5/19/91

DESIGNED BY

ITEM#	PART#	DESCRIPTION	QTY	WHERE USED
-------	-------	-------------	-----	------------

1.	700-12646	CHASSIS, WRAP	1	
2.	700-09856	CHASSIS, INSERT, FP	1	
3.	702-12640	PANEL, FRONT, PCM 81	1	
4.	700-12642	PANEL, FRONT, PCM 91	1	
5.	700-12647	COVER, TOP/BOTTOM	2	
6.	700-09859	BRACKET, PWR SUP	1	
7.	703-12644	PANEL, OVLX, REAR	1	
8.	022-12611	PL, HOST BD ASSY, PCM 81	1	
9.	022-12661	PL, HOST BD ASSY, PCM 91	1	
10.	022-12613	PL, DSP BD ASSY, PCM 81	1	
11.	022-10361	PL, DSP BD ASSY, PCM 91	1	
12.	024-09840	PL, SWITCH BD ASSY	1	
13.	024-09841	PL, ENCODER BD ASSY	1	
14.	024-10964	PL, HEADROOM BD ASSY	1	
15.	024-10963	PL, LVL POT BD ASSY	1	
16.	701-09860	BRACKET, POT SHIELD	1	
17.	430-09785	DISPLAY, VF, 20X2 CHAR, 5X7 DOT	1	
18.	703-09862	LENS, DISPLAY	1	
19.	750-11396	PWR SUP, +5V, +/-15V, 40W	1	
20.	702-09858	COVER, PROTECTIVE, TOP PS	1	
21.	702-09861	COVER, PROTECTIVE, BOT PS	1	
22.	490-00798	CONN, AC, 3MC, BULKHD, IEC, 6A	1	
23.	453-09868	SW, FBPLP, 1PIT, PCRA, 2.5MM TRAV	1	
24.	550-09759	BUTTON, .20X.50, BLK	3	
25.	550-03827	BUTTON, .346RD, BLK	9	
26.	550-09087	KNOB, 15MM, 6MM/FLAT, BLK	2	
27.	550-12351	CAP, SW, 7.5MM RD, X, 22.5MML, BLK	1	
28.	530-09797	CLAMP, CABLE, .169", ZN	1	
29.	530-02488	TIE, CABLE, NYL, .14 X 5/8"	1	
30.	530-09382	CLIP, WIRE HRNS, .15DIA, ADH BAK	2	
31.	540-00874	GROMMET, 9/16 OD, 7/16 ID	2	
32.	620-01999	LUG, SOLDER, LCKNG, #6, .020THK	2	
33.	630-02737	WSHR, FL, #8CLX.02 THK, BLK, NYL	4	
34.	630-03669	SPCR, #4CLX3/8, 3/16RD, NYL	1	
35.	630-09709	SPCR, PCB/FOOT, 1.88, NYL	2	
36.	635-09770	SPCR, SWAGE, 4-40X7/8, 1/4RD, BR	4	
37.	640-11284	SCRW, M3X8MM, FH, PH, BZ	6	
38.	640-04339	SCRW, 4-40X1/4, PNH, PH, SEMS, ZN	6	
39.	640-01706	SCRW, 4-40X3/8, PNH, PH, ZN	4	
40.	640-02034	SCRW, 4-40X5/8, PNH, PH, ZN	2	
41.	640-03957	SCRW, 6-32X3/16, TH, PH, BLK	16	
42.	640-09987	SCRW, 6-32X5/16, PNH, PH, SEMS, ZN	14	
43.				
44.	640-07696	SCRW, M3X8MM, PNH, PH, ZN	2	
45.	640-09758	SCRW, M3X16MM, FH, PH, ZN	2	
46.	640-02736	SCRW, 8-32X3/8, BH, SCKT, BLK	4	
47.	641-09699	SCRW, TAP, AB, #2 X 5/16, PNH, PH, ZN	3	
48.	641-11466	SCRW, TAP, #4 X 3/8, PNH, PH, BZ, TRI	9	
49.	643-01732	NUT, 4-40, KEP, ZN	6	
50.	643-01728	NUT, 6-32, KEP, ZN	2	
51.	644-01735	WSHR, FL, #6CLX3/8 ODX1/32 THK	1	
52.	644-07893	WSHR, FL, #42IDX.550 ODX .035THK, ZN	2	
53.	650-05899	POPRVT, 5/32X1/4, REG PROT HD, AL	3	

ITEM#	PART#	DESCRIPTION	QTY	WHERE USED
-------	-------	-------------	-----	------------

54.	680-10885	CABLE, RIB, 24-26G, 7CX, 1, 1" L	1	LVL POT BD TO HOST BD
55.	680-12718	CABLE, HSG/ST&T, 6C, 25/8.5, SLV	1	PS TO HOST BD
56.	680-11709	CABLE, AC PWR, SHLD, 14	1	AC CONN TO PS & PWR SW
57.	680-09757	CABLE, XITION/SCKT, 20C, 6.0"	1	DISPLAY TO HOST BD
58.	680-09763	CABLE, .079, SCKT/SCKTRA, 10C, 2.0"	1	SWITCH BD TO HOST BD
59.	680-09764	CABLE, .079, SCKT/SCKTRA, 6C, 2.0"	1	ENCODER BD TO HOST BD
60.	680-10886	CABLE, RIB, 24-26G, 7C X 1", 5.5"	1	HEADROOM BD TO HOST BD
61.	740-08556	LABEL, GROUND SYMBOL, 0.5" DIA	1	CHASSIS GND
62.				
63.	740-12629	LABEL, PRODUCT ID, PCM 81	1	TOP COVER
64.	740-12665	LABEL, PRODUCT ID, PCM 91	1	TOP COVER
65.	740-11482	LABEL, WARN/APP, FCC/C-UL/CE, PRO	1	TOP COVER
66.	740-08558	LABEL, TUV CERTIFIED, BAYERN	1	TOP COVER
67.				
68.	120-09571	ADHESIVE, CONTACT CEMENT	0.03oz	DISPLAY LENS TO FRONT PANEL
69.				
70.	510-09985	CONN, MEM CARD, 68 PIN, EJECTOR	1	HOST BD
71.	620-06638	LUG, SOLDER, LCKNG, #4	1	AC CABLE GND (PART OF ITEM 58)
72.	710-10190	PC BD, MEM CD CONN CVR	1	HOST BD
73.				
74.				
75.				
76.				
77.				
78.				
79.				
80.				
81.				
82.				
83.				
84.				
85.				
86.				
87.				
88.				
89.				
90.				
91.				
92.				
93.				
94.				
95.				
96.				
97.				
98.				
99.				
100.				

NOTES

1. PART NUMBER LISTING IS FOR REFERENCE ONLY AND DOES NOT SUPERSEDE THE BILL OF MATERIAL:
PCM 81 - #021-12610
PCM 91 - #021-12660

REV	DESCRIPTION	DATE	BY

ISSUED	CHK	BY	DATE

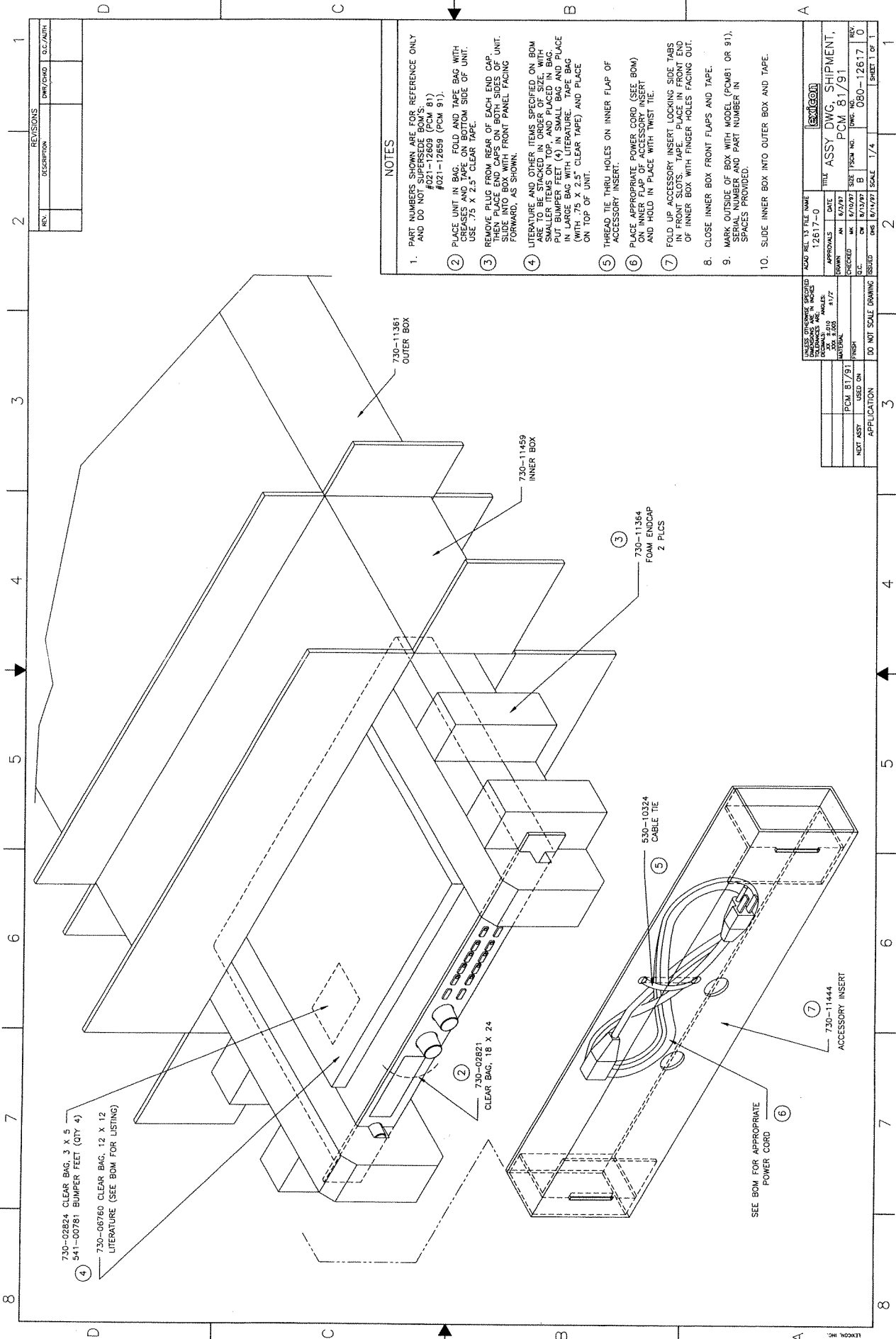
APPROVALS	DATE

PCB	PCB	PCB	PCB

DO NOT SCALE DRAWING	SCALE

ASSY DWG
CHASSIS, PCM 81/91
REV 1
REV 0
REV 0

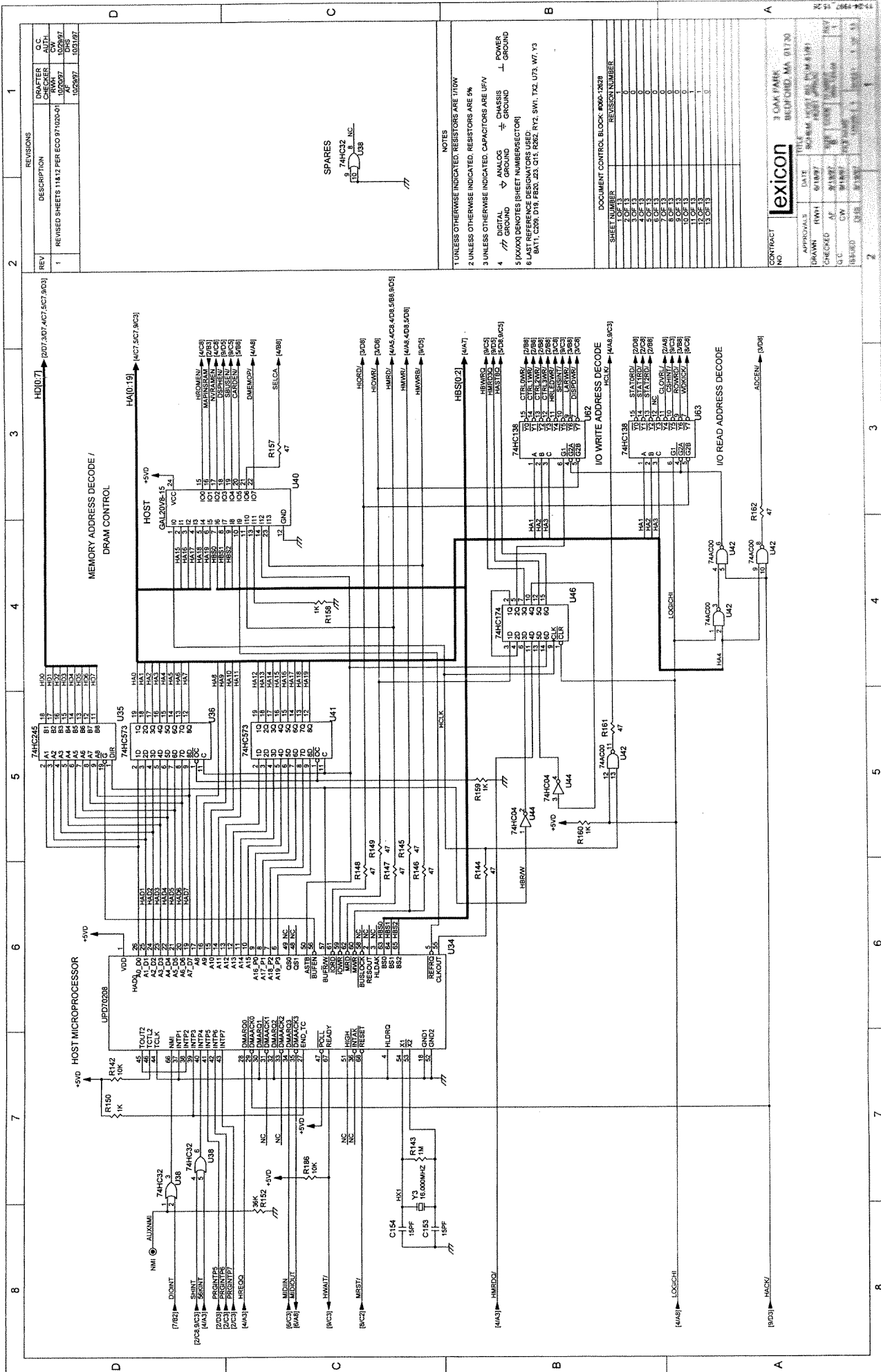
EXTREME



- NOTES**
1. PART NUMBERS SHOWN ARE FOR REFERENCE ONLY AND DO NOT SUPERSEDE BOM'S: #021-12609 (PCM 81) #021-12659 (PCM 91).
 2. PLACE UNIT IN BAG. FOLD AND TAPE BAG WITH CREASES AND TAPE ON BOTTOM SIDE OF UNIT. USE .75 X 2.5" CLEAR TAPE.
 3. REMOVE PLUG FROM REAR OF EACH END CAP. THEN PLACE END CAPS ON BOTH SIDES OF UNIT. SLIDE INTO BOX WITH FRONT PANEL FACING FORWARD, AS SHOWN.
 4. LITERATURE AND OTHER ITEMS SPECIFIED ON BOM ARE TO BE STACKED IN ORDER OF SIZE, WITH THE LARGEST ITEM AT THE BOTTOM. PUT BUMPER FEET (3) IN SMALL BAG AND PLACE IN LARGE BAG WITH LITERATURE. TAPE BAG (WITH .75 X 2.5" CLEAR TAPE) AND PLACE ON TOP OF UNIT.
 5. THREAD TIE THRU HOLES ON INNER FLAP OF ACCESSORY INSERT.
 6. PLACE APPROPRIATE POWER CORD (SEE BOM) ON INNER FLAP OF ACCESSORY INSERT AND HOLD IN PLACE WITH TWIST TIE.
 7. FOLD UP ACCESSORY INSERT LOCKING SIDE TABS IN FRONT SLOTS. TAPE. PLACE IN FRONT END OF INNER BOX WITH FINGER HOLES FACING OUT.
 8. CLOSE INNER BOX FRONT FLAPS AND TAPE.
 9. MARK OUTSIDE OF BOX WITH MODEL (PCM81 OR 91), SERIAL NUMBER AND PART NUMBER IN SPACES PROVIDED.
 10. SLIDE INNER BOX INTO OUTER BOX AND TAPE.

UNLESS OTHERWISE SPECIFIED DIMENSIONS ARE IN INCHES TOLERANCES ARE: FRACTIONS DECIMALS .0001 .0005 .0125 .0150 .0175	REV. TO FILE NAME 12617-0	TITLE ASSY DWG. SHIPMENT, PCM 81/91
APPROVALS DRAWN BY: 8/1/97 CHECKED BY: 8/1/97 DATE: 8/1/97	SIZE: 11x17 SHEET NO.: 080-12617-0	REV. BY: 8/1/97
PCB: 81/91 USED ON: NEXT ASSY:	SCALE: 1/4"	SHEET 1 OF 1

DO NOT SCALE DRAWING	APPLICATION:
----------------------	--------------

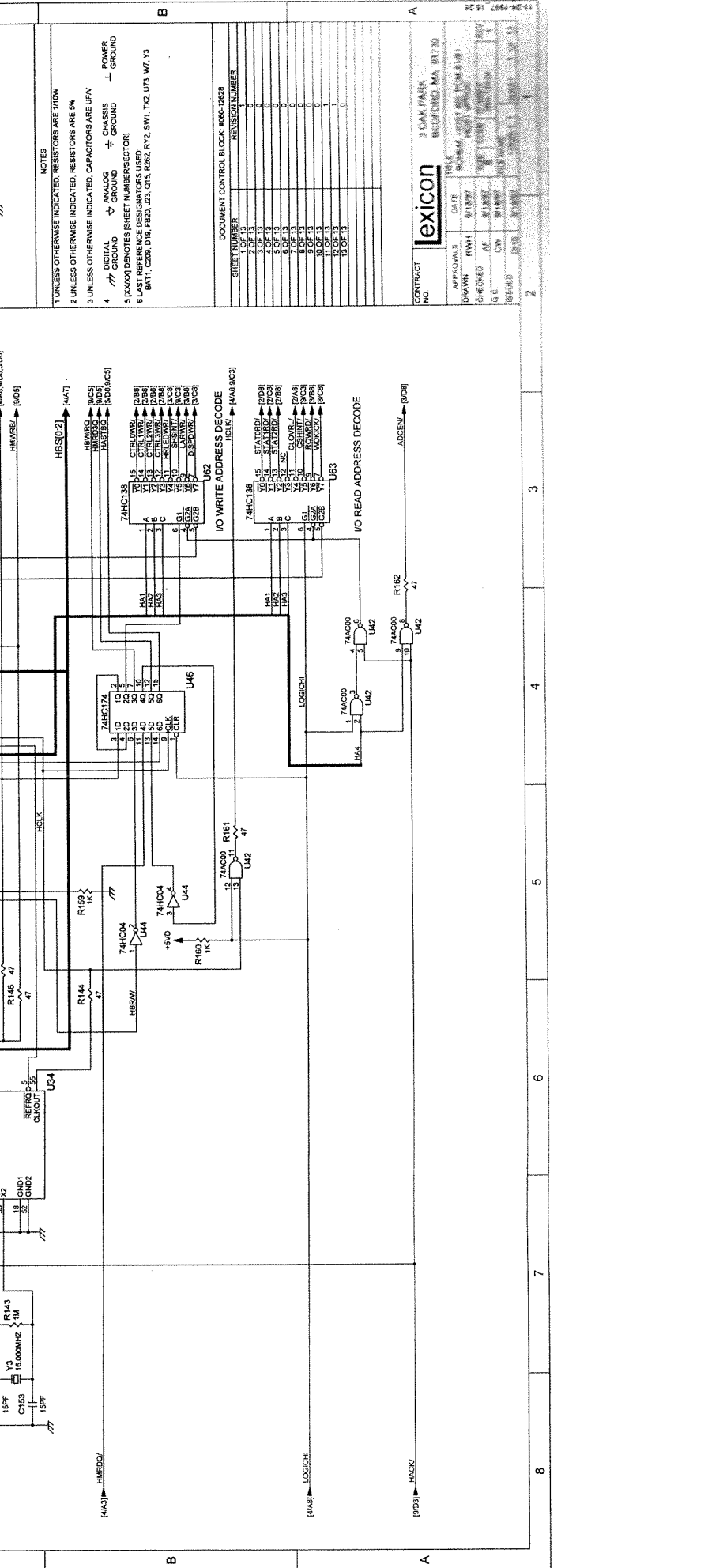


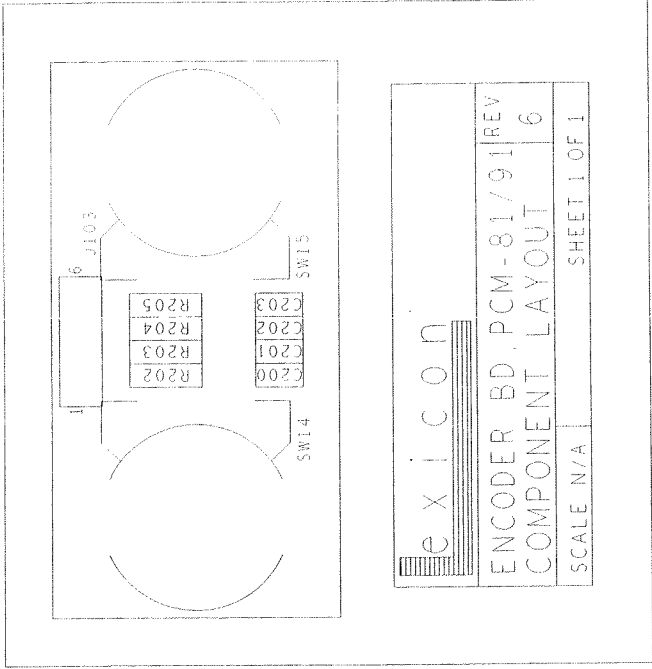
REV	DESCRIPTION	REVISIONS	DRAWN	C.C.
1	REVISED SHEETS 11417 PER ECO 971020-01		10/29/97	10/29/97
			10/29/97	10/29/97
			10/29/97	10/29/97

1 UNLESS OTHERWISE INDICATED, RESISTORS ARE 100W
 2 UNLESS OTHERWISE INDICATED, RESISTORS ARE 5%
 3 UNLESS OTHERWISE INDICATED, CAPACITORS ARE 10V
 4 ∇ GROUND ∇ ANALOG ∇ CHASSIS ∇ POWER ∇ GROUND ∇ GROUND
 5 (X) DENOTES (SHEET NUMBER/SECTION)
 6 LAST REFERENCE DESIGNATORS USED.
 BATT, C209, D18, F20, J23, Q15, R262, R12, SW1, T22, U73, W7, Y3

SHEET NUMBER	REVISION NUMBER
2 OF 13	0
3 OF 13	0
4 OF 13	0
5 OF 13	0
6 OF 13	0
7 OF 13	0
8 OF 13	0
9 OF 13	0
10 OF 13	0
11 OF 13	0
12 OF 13	0
13 OF 13	0

CONTRACT NO. 3 OAK PARK
 3 OAK PARK
 BELMONT, MA 01710
 APPROVALS: DATE
 DRAWN: 10/18/97
 CHECKED: 10/18/97
 C.C.: 10/29/97
 DESIGNED: 10/29/97
 REVISIONS: 10/29/97



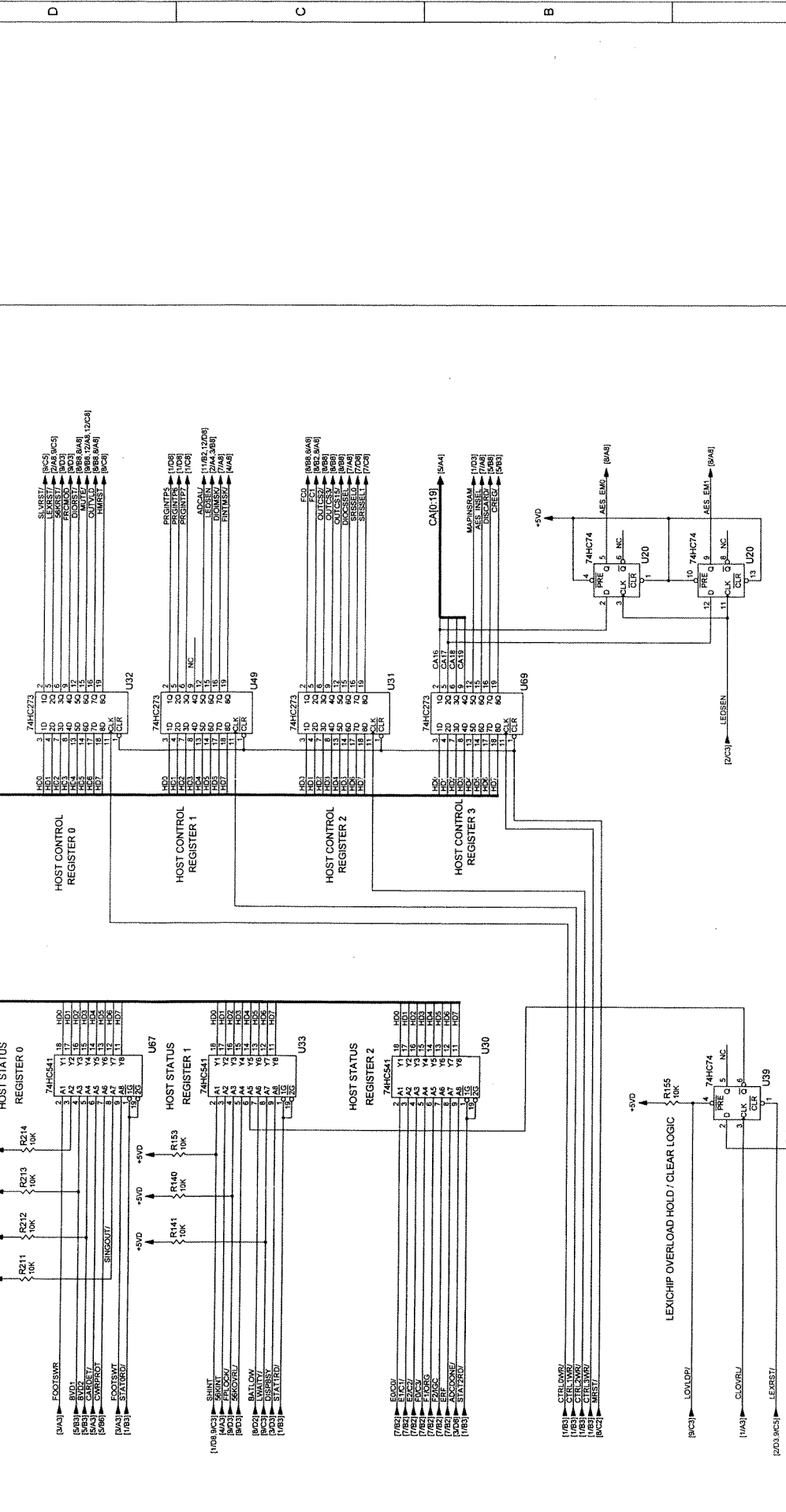




 e x i c o n

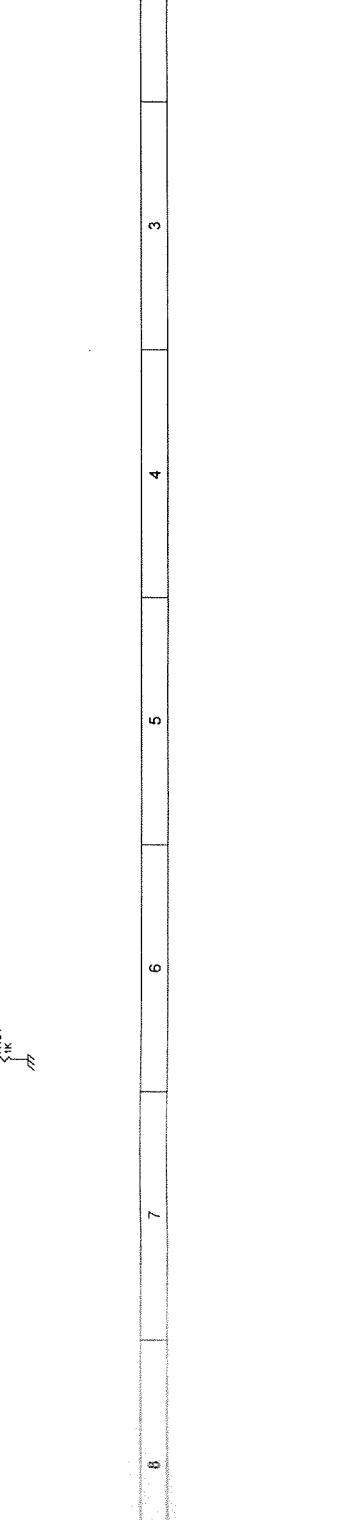
ENCODER BD. PCM-81/91 REV 6
 COMPONENT LAYOUT

SCALE N/A SHEET 1 OF 1

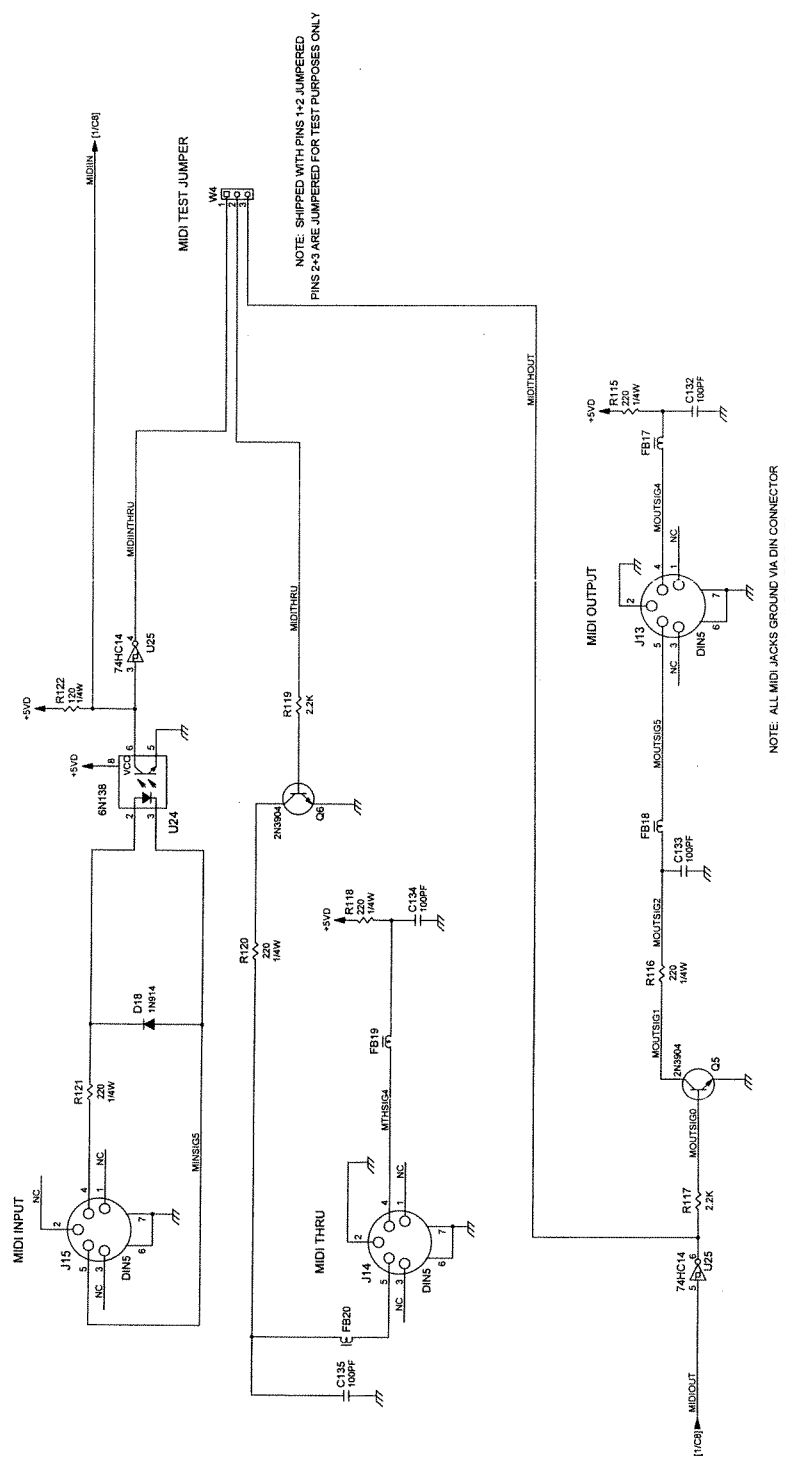


REV	DESCRIPTION	REVISIONS	DRAWN	CHECKER	AUTH
1					
2					
3					
4					
5					
6					
7					
8					

CONTRACT NO.		3 OAK PARK	
APPROVALS		BEDFORD, MA 01730	
DRAWN	DATE	TITLE	REV
RWH	6/1/97	SCHEM HOST RD, FCMA4101	0
CHECKED	AF	CONTROL & STATUS REGS	0
Q.C.	CW	SIZE	NUMBER
ISSUED	DHS	FILE NAME	2 OF 13
		1222-0.2	



CONTRACT NO.		3 OAK PARK BEDFORD, MA 01730	
TITLE	DATE	SCHEM HOST	REV
EXICON	6/18/97	BD.	0
DRAWN	RMH	MIDI	
CHECKED	AF	SIZE	0
Q.C.	CV	CODE NUMBER	0
ISSUED	DHS	FILE NAME	0
		1282-0.6	6 OF 13



REVISIONS		DRAFTER	Q.C.
REV	DESCRIPTION	CHECKER	AUTH

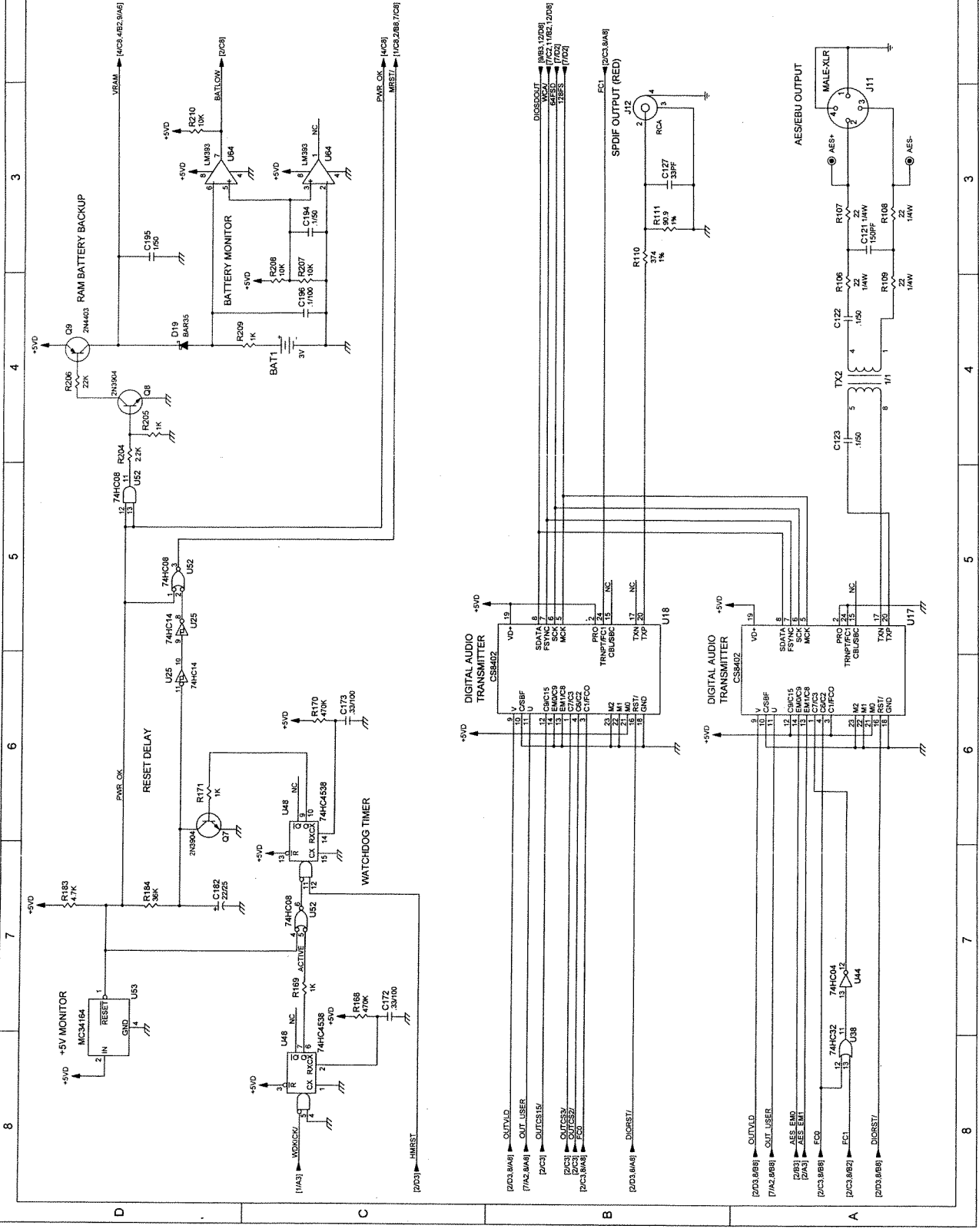
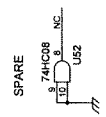
1 2 3 4 5 6 7 8

D C B A

9-19-1997 12:40

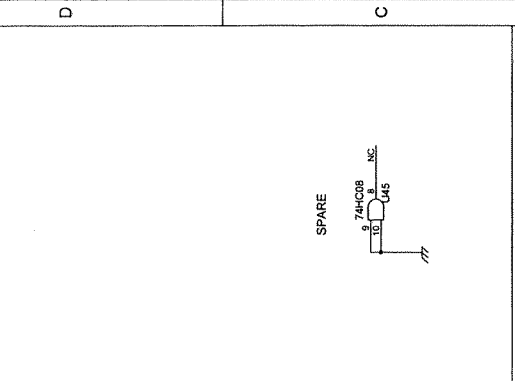
REV	DESCRIPTION	REVISIONS	CHAPTER	DATE	DRAWN	CHECKED	ISSUED	DATE	FILE NAME	SIZE	CODE	NUMBER	REV
1													0

CONTRACT NO.		3 OAK PARK	
TITLE		BEDFORD, MA 01730	
APPROVALS	DATE	FILE	SCHEM. HOST BD. POM-81/81
DRAWN	RWH	8/18/97	RESET/DIGITAL AUDIO OUTPUTS
CHECKED	AF	9/19/97	B
Q.C.	CW	9/19/97	FILE NAME
ISSUED	DNS	9/19/97	12829-0-8
			SHEET 8 OF 13



[2]03.8(A)1	OUT_VLD	[2]03.8(A)8	OUT_VLD
[7]A2.8(A)1	OUT_USER	[7]A2.8(A)8	OUT_USER
[2]C3	OUT_CS15	[2]C3	AES_EMO
[2]C3	OUT_CS17	[2]C3	AES_EMT
[2]C3.8(A)1	FSO	[2]C3.8(A)8	FSO
[2]03.8(A)8	DIGRST1	[2]03.8(A)1	OUT_VLD
		[2]03.8(A)8	OUT_USER
		[2]03	AES_EMO
		[2]03	AES_EMT
		[2]C3.8(A)1	FSO
		[2]C3.8(A)2	F_C1
		[2]C3.8(A)8	DIGRST1

REV	DESCRIPTION	DRAWN	C.C.
		CHECKER	AUTL

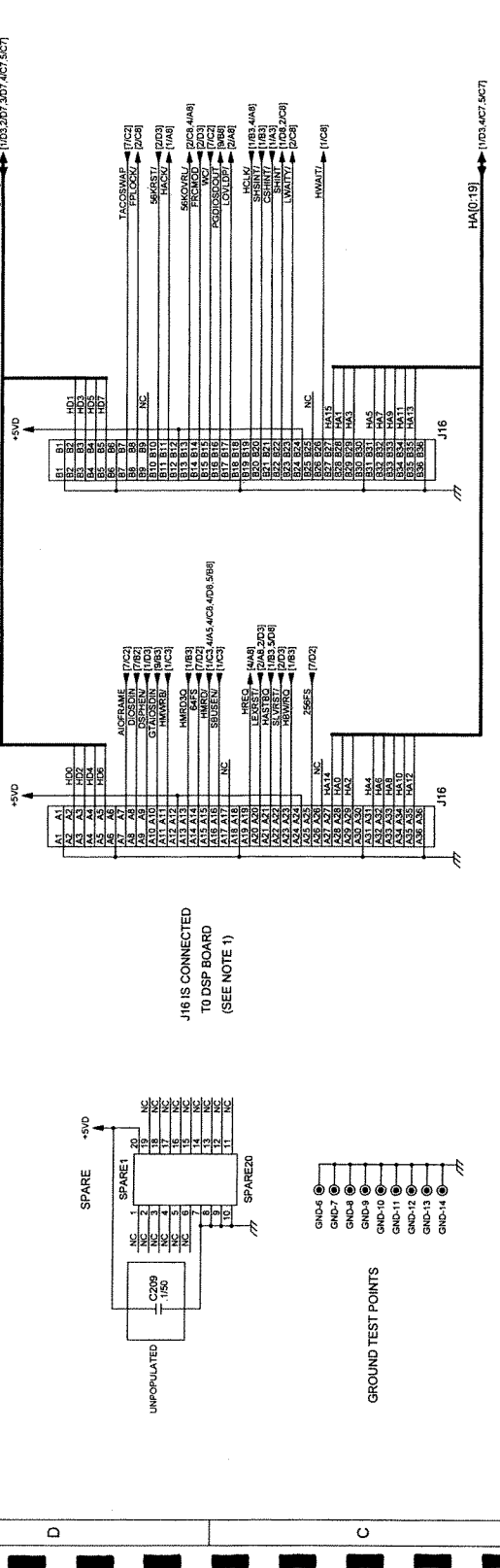


NOTES
 1. SIGNAL NAMES SHOWN ON J16 REPRESENT THE CIRCUIT CONNECTIONS ON THE HOST BOARD. THE DSP BOARD SIGNALS TO WHICH THEY ARE CONNECTED ARE LISTED IN THE TABLE BELOW

PCMR40 DSP SIGNAL NAME	PCMR40 DSP SIGNAL NAME
A9	DSPHEN
A10	HMRDQ
A11	HREQ
A12	SLVST/
A13	SLVSTX
A14	NC
A15	NC
A16	FMRGB/
A17	TACOSWAP
A18	NC
A19	PHLOS/
A20	PHLOSX
A21	NC
A22	SHNTY
A23	SHNTY
A24	SHNTY
A25	SHNTY
A26	SHNTY
A27	SHNTY
A28	SHNTY
A29	SHNTY
A30	SHNTY
A31	SHNTY
A32	SHNTY
A33	SHNTY
A34	SHNTY
A35	SHNTY
A36	SHNTY
A37	SHNTY
A38	SHNTY
A39	SHNTY
A40	SHNTY
A41	SHNTY
A42	SHNTY
A43	SHNTY
A44	SHNTY
A45	SHNTY
A46	SHNTY
A47	SHNTY
A48	SHNTY
A49	SHNTY
A50	SHNTY
A51	SHNTY
A52	SHNTY
A53	SHNTY
A54	SHNTY
A55	SHNTY
A56	SHNTY
A57	SHNTY
A58	SHNTY
A59	SHNTY
A60	SHNTY
A61	SHNTY
A62	SHNTY
A63	SHNTY
A64	SHNTY
A65	SHNTY
A66	SHNTY
A67	SHNTY
A68	SHNTY
A69	SHNTY
A70	SHNTY
A71	SHNTY
A72	SHNTY
A73	SHNTY
A74	SHNTY
A75	SHNTY
A76	SHNTY
A77	SHNTY
A78	SHNTY
A79	SHNTY
A80	SHNTY
A81	SHNTY
A82	SHNTY
A83	SHNTY
A84	SHNTY
A85	SHNTY
A86	SHNTY
A87	SHNTY
A88	SHNTY
A89	SHNTY
A90	SHNTY
A91	SHNTY
A92	SHNTY
A93	SHNTY
A94	SHNTY
A95	SHNTY
A96	SHNTY
A97	SHNTY
A98	SHNTY
A99	SHNTY
A100	SHNTY

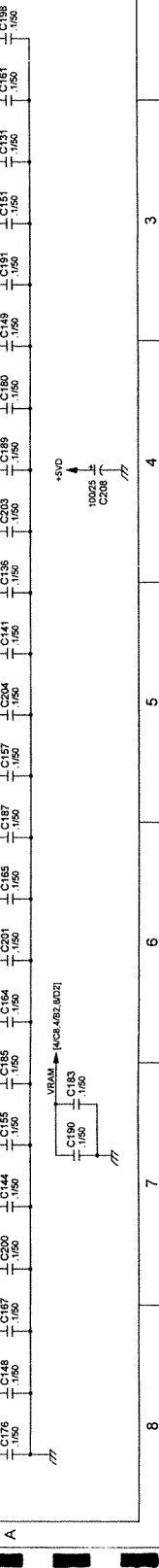
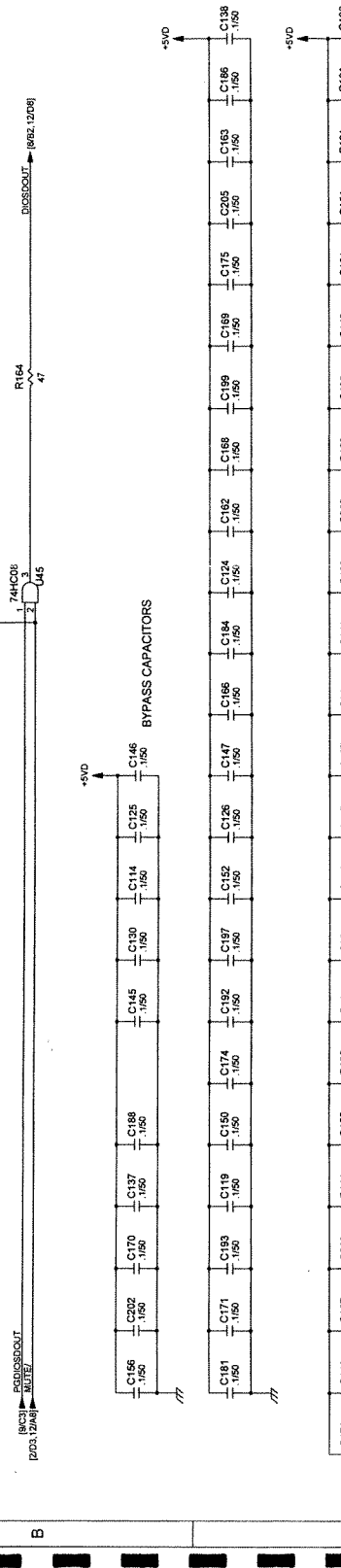
lexicon
 3 OAK PARK
 BEDFORD, MA 01730

APPROVALS	DATE	TITLE
DRAWN	6/1/97	SCHM. HOST BD. PCMR40
CHECKED	AF	DSP BD CONN/BYPASS CAPS
C.C.	CW	SIZE CODE NUMBER
ISSUED	DHS	FILE NAME



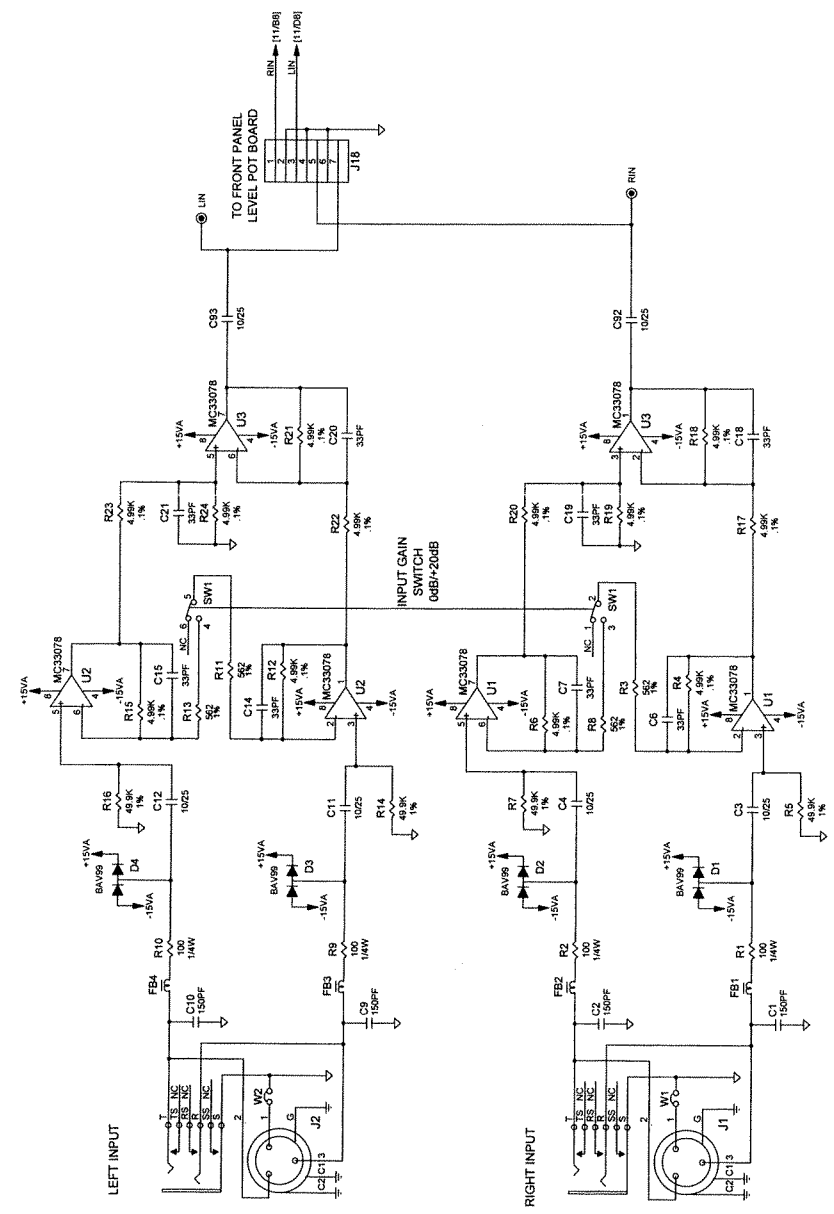
GROUND TEST POINTS
 GND-5
 GND-7
 GND-8
 GND-9
 GND-10
 GND-11
 GND-12
 GND-13
 GND-14

SERIAL I/O MUTING LOGIC
 U45 74HC08
 U46 74HC08



CONTRACT NO.	3 OAK PARK BEDFORD, MA 01730
APPROVALS	DATE
DRANN RWH	6/1997
CHECKED AF	9/1997
QC CW	9/1997
ISSUED DHS	9/1997
TITLE	SCHEM, HOST BD, PCM-8/8/81 ANALOG INPUTS
SIZE	CODE NUMBER
FILE NAME	88-14228
REV	D
SHEET	10 OF 13

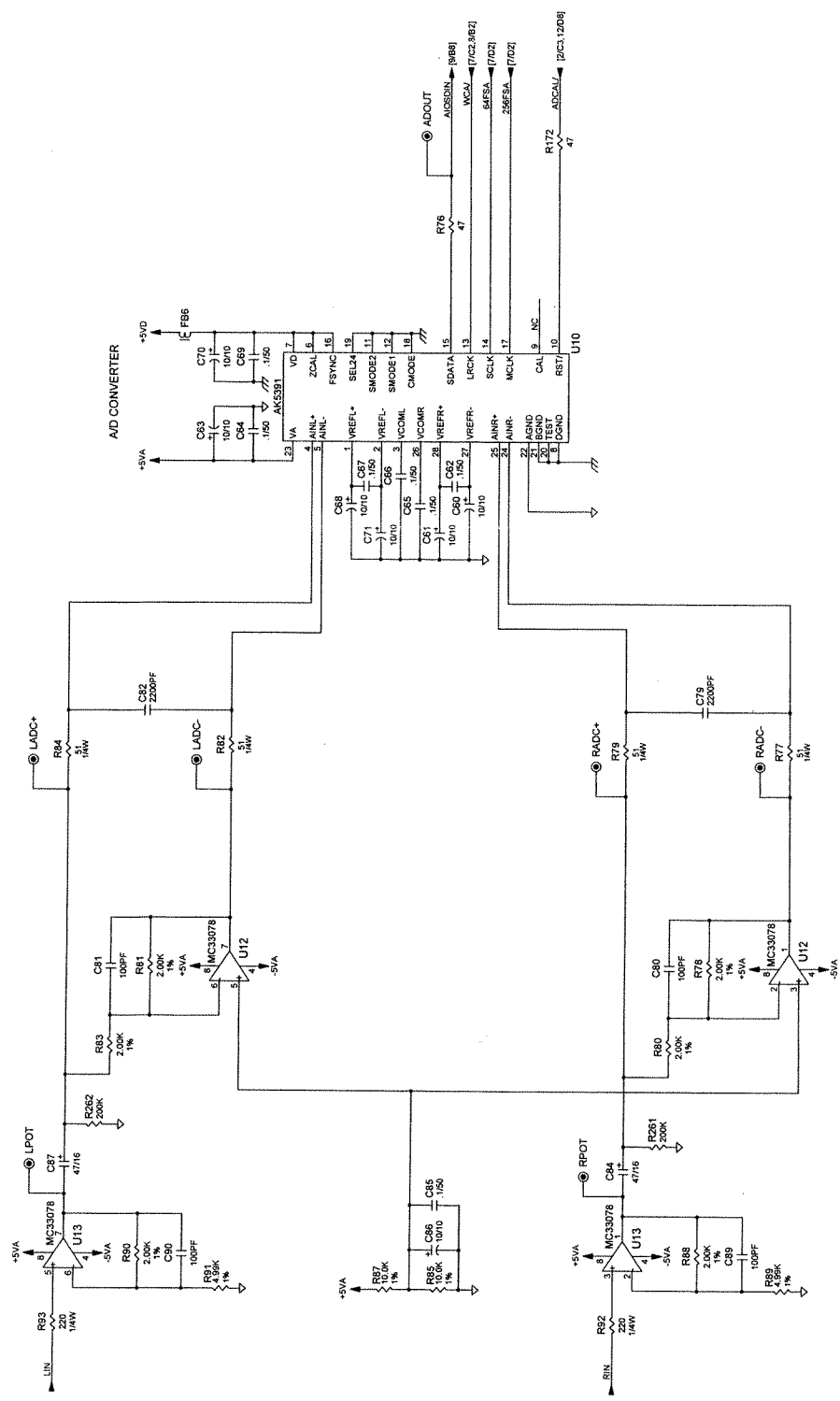
REV	DESCRIPTION	DATE
1		06/11/97



Grid lines: 1-8 (vertical), A-D (horizontal)

CONTRACT NO.		3 OAK PARK	
DATE		DATE	
APPROVALS	DATE	DATE	DATE
DRAWN RWH	6/18/97	SCHEM. HOST BD. POINB/RS1	
CHECKED AF	9/1/97	A.T.O.D CONVERSION	
Q.C. CW	9/18/97	SIZE CODE NUMBER	REV
ISSUED DHS	9/18/97	B	1
		FILE NUMBER	11
		1060-12628	11
		10626-1.11	11
		SHEET	11 OF 13

REVISIONS	
REV	DESCRIPTION
1	ADDED R21 & R22 DELETED R46 PER ECG 971029-01



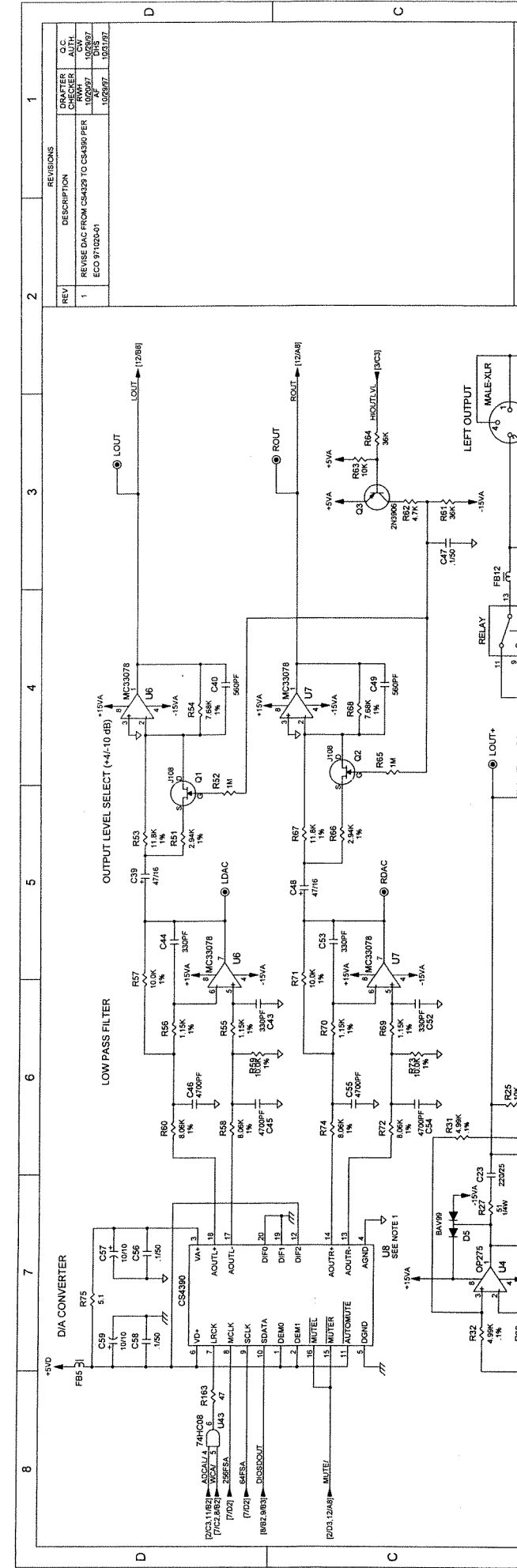
1 2 3 4 5 6 7 8

D C B A

CONTRACT NO.		3 OAK PARK, BEDFORD, MA. 01730	
APPROVALS	DATE	FILE NO.	PCB-SEM-HOST BD, PCM-8191
DRAWN: RWH	6/18/97	SIZE	DAC & OUTPUTS
CHECKED: AF	9/19/97	NUMBER	060-12528
DWG	9/19/97	FILE NAME	12528-1.12
ISSUED	DHS	9/19/97	12528-1.12 SHEET 12 OF 13

REV	DESCRIPTION	REVISIONS	DRAFTER	C.C.
1	REVISE DAC FROM CS4329 TO CS4390 PER ECO 9/12/2001	10/20/97	RWH	OW
		10/28/97		
		10/28/97		
		10/28/97		

NOTES
1 CS4329 DAC MAY BE INSTALLED AT LOCATION US



8 7 6 5 4 3 2 1

DIA CONVERTER

LOW PASS FILTER

BALANCED OUTPUT DRIVERS

LEFT OUTPUT

RIGHT OUTPUT

CONTRACT NO.		3 OAK PARK	
APPROVALS		DATE	
DRAWN	RWH	6/18/97	
CHECKED	AF	8/19/97	
Q.C.	CW	SIZE	B
ISSUED	DHS	CODE NUMBER	000-12628
		FILE NAME	12628-1.13
		SHEET	13 OF 13

lexicon

TITLE
SCHEMATIC FOR POWER SUPPLY

3 OAK PARK
BEDFORD, MA 01730

REV
0

REV
0

REV
0

REV
0

REV
0

REV
0

REV
0

REV
0

REV
0

REV
0

REV
0

REV
0

REV
0

REV
0

REV
0

REV
0

REV
0

REV
0

REV
0

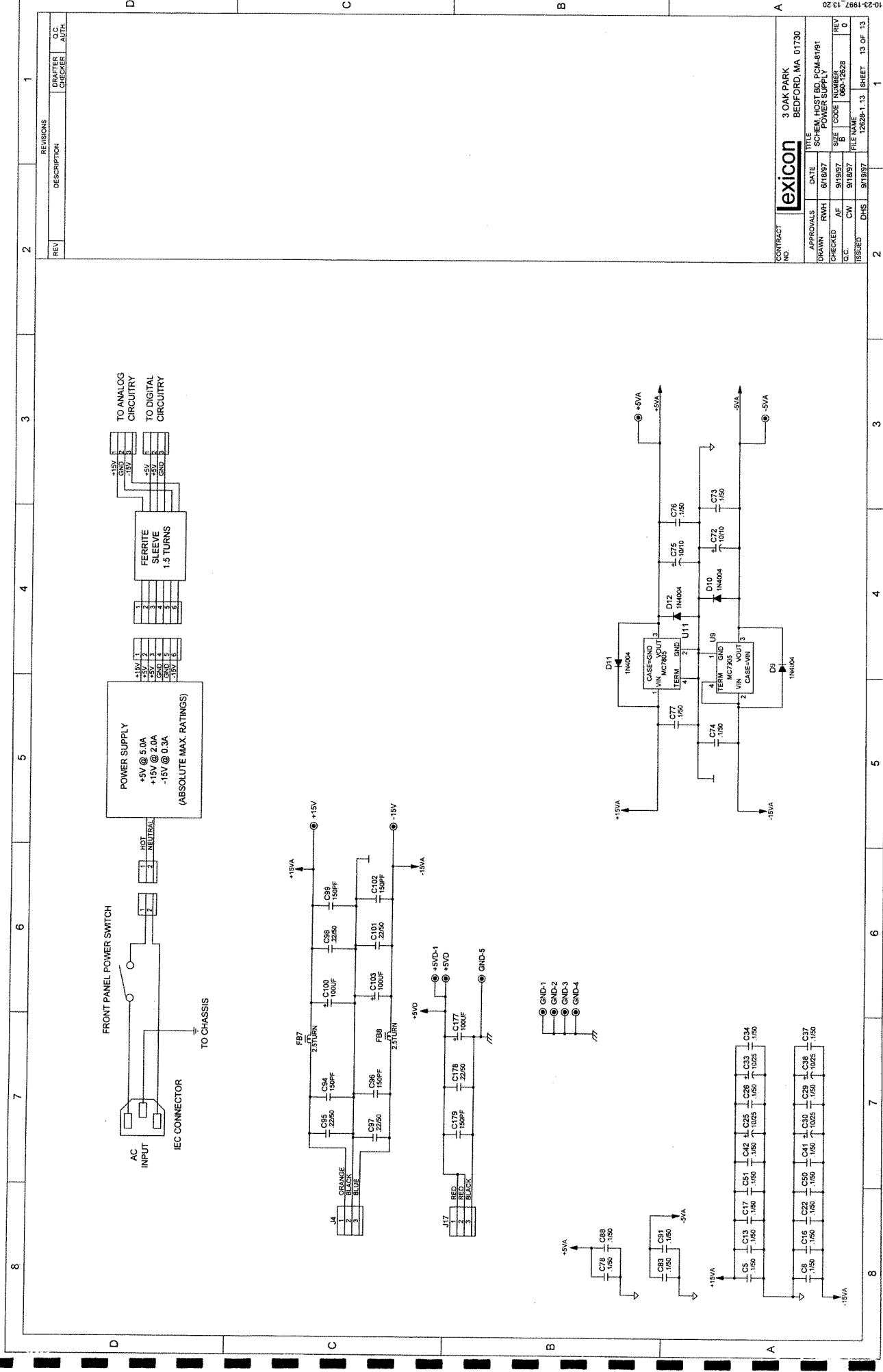
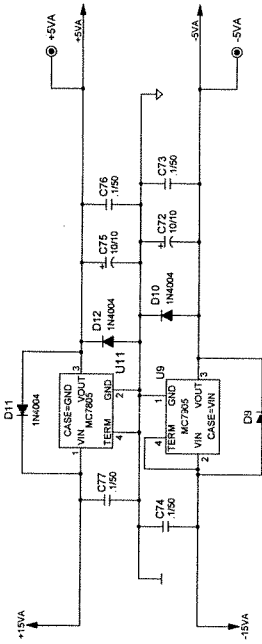
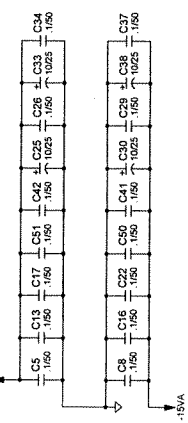
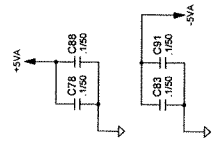
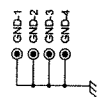
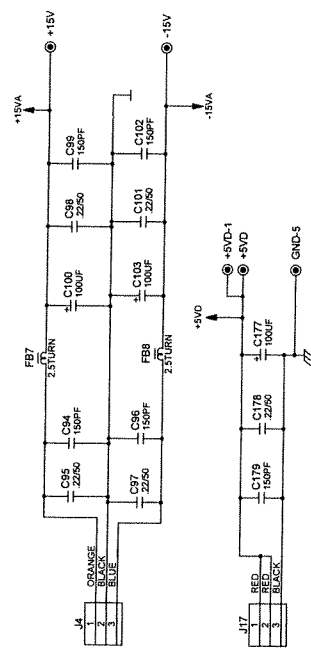
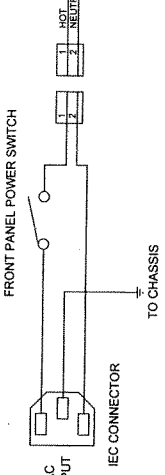
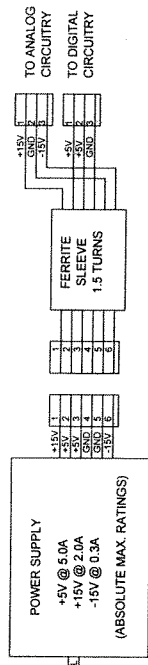
REV
0

REV
0

REV
0

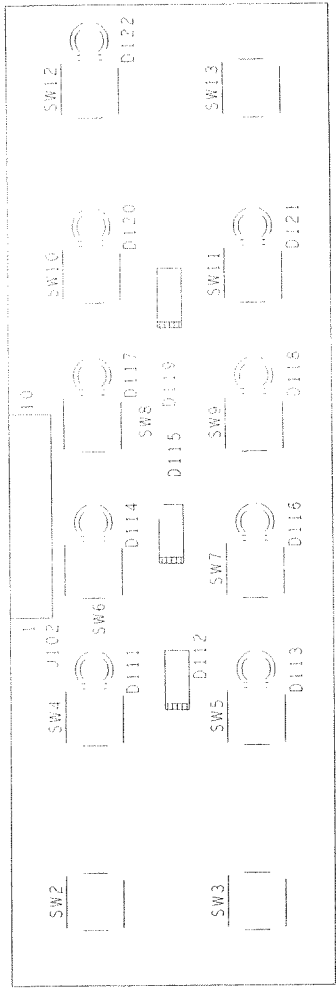
REV
0


REV
0

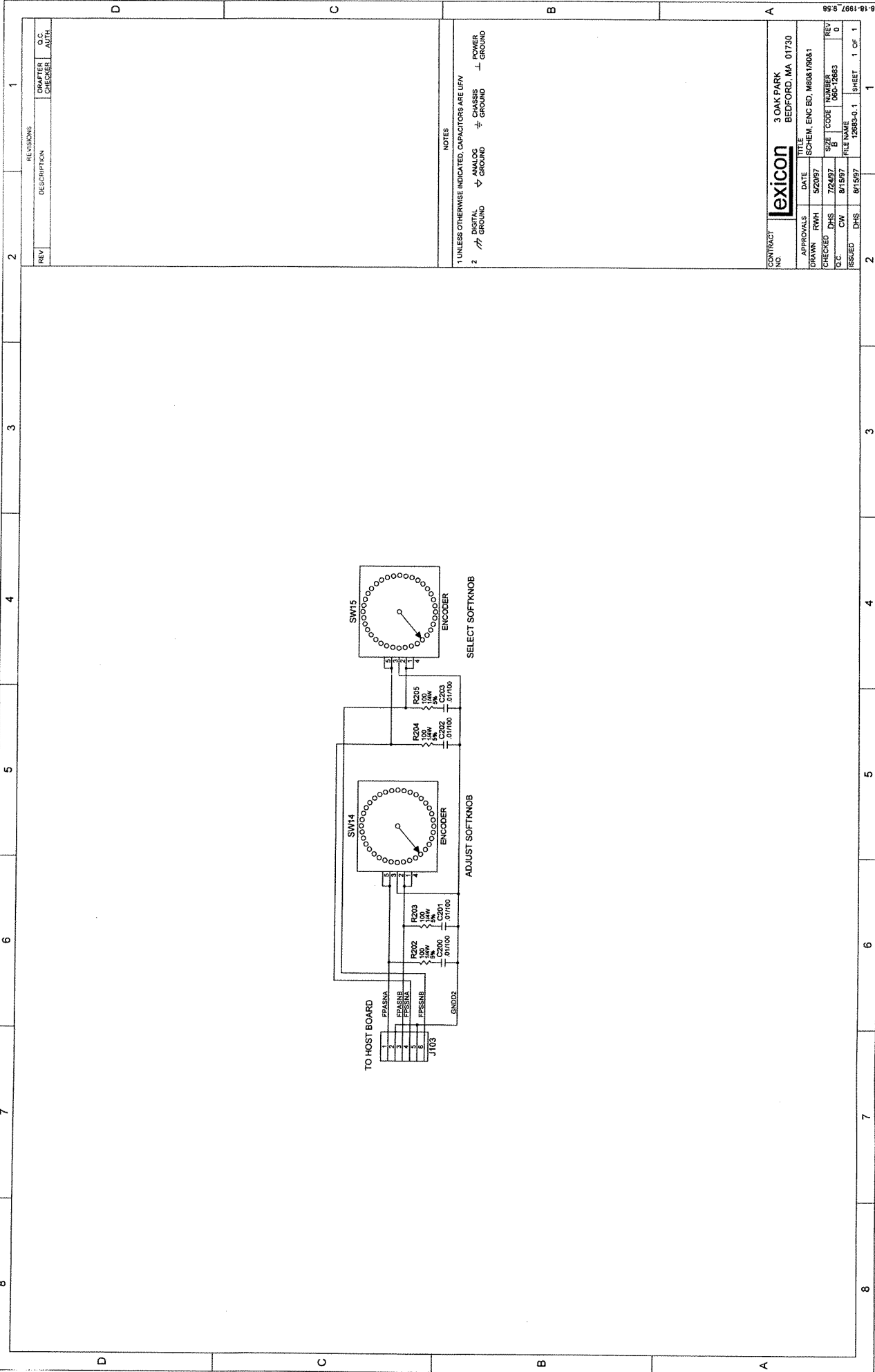


10-23-1997 13 20

REV	DESCRIPTION	DRAFTER	CHECKER	Q.C.	AUTH.
1					
2					
3					
4					
5					
6					
7					
8					



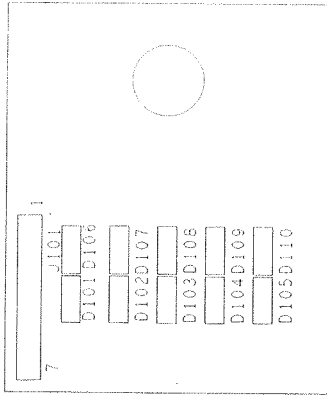
	
SWITCH BD, PCM-81/91 COMPONENT LAYOUT	REV 4
SCALE N/A	SHEET 1 OF 1




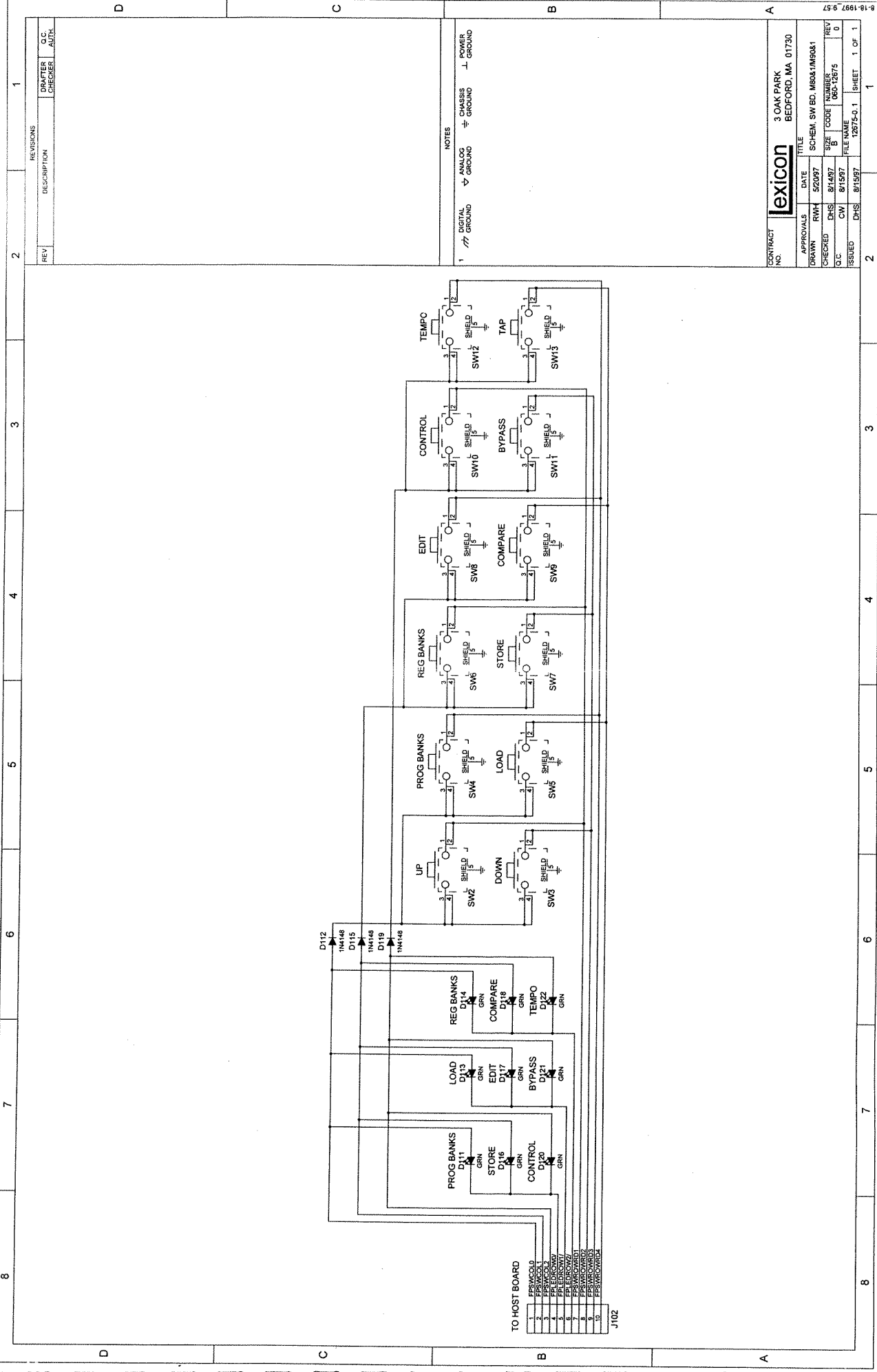
NOTES
 1 UNLESS OTHERWISE INDICATED, CAPACITORS ARE UFV
 2 \rightarrow DIGITAL GROUND \leftrightarrow ANALOG GROUND \oplus CHASSIS GROUND \perp POWER GROUND

REVISIONS		DRAFTER	Q.C.
REV	DESCRIPTION	CHECKER	AUTH

lexicon		3 OAK PARK BEDFORD, MA 01730	
CONTRACT NO.	APPROVALS	DATE	TITLE
	DRAWN RWH	5/20/97	SCHEM. ENC BD. M806/150&1
	CHECKED DHS	7/24/97	SIZE
	ISSUED DHS	8/15/97	CODE NUMBER
			060-12663
			REV
			0
			FILE NAME
			12663-0.1
			SHEET 1 OF 1



	
HDRM BD, PCM-31/91	REV 5
COMPONENT LAYOUT	
SCALE: N/A	SHEET 1 OF 1



- TO HOST BOARD
1. FFSW00L0
 2. FFSW00L1
 3. FFSW00L2
 4. FFSW00L3
 5. FFSW00L4
 6. FFSW00L5
 7. FFSW00L6
 8. FFSW00L7
 9. FFSW00L8
 10. FFSW00L9
- J102

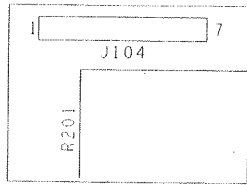
NOTES

DIGITAL GROUND ANALOG GROUND CHASSIS GROUND POWER GROUND

⏏ ⤴ ⚡ ⊥

CONTRACT NO.		3 OAK PARK	
DRAWN		BEDFORD, MA 01730	
APPROVALS	DATE	TITLE	
RWH	5/29/97	SCHEM. SW BD. M80X1M90&1	
CHECKED	DHS	SIZE	REV
CW	8/15/97	B	0
ISSUED	DHS	FILE NAME	1 OF 1
		12675-0.1	

REV	DESCRIPTION	DRAFTER	C.C.
		CHECKER	AUTH

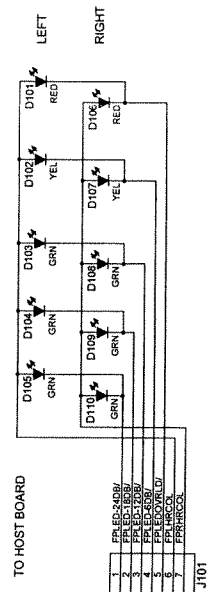


e x i c o n	
POT BD_PCM-81/91	REV
COMPONENT LAYOUT	3
SCALE N/A	SHEET 1 OF 1

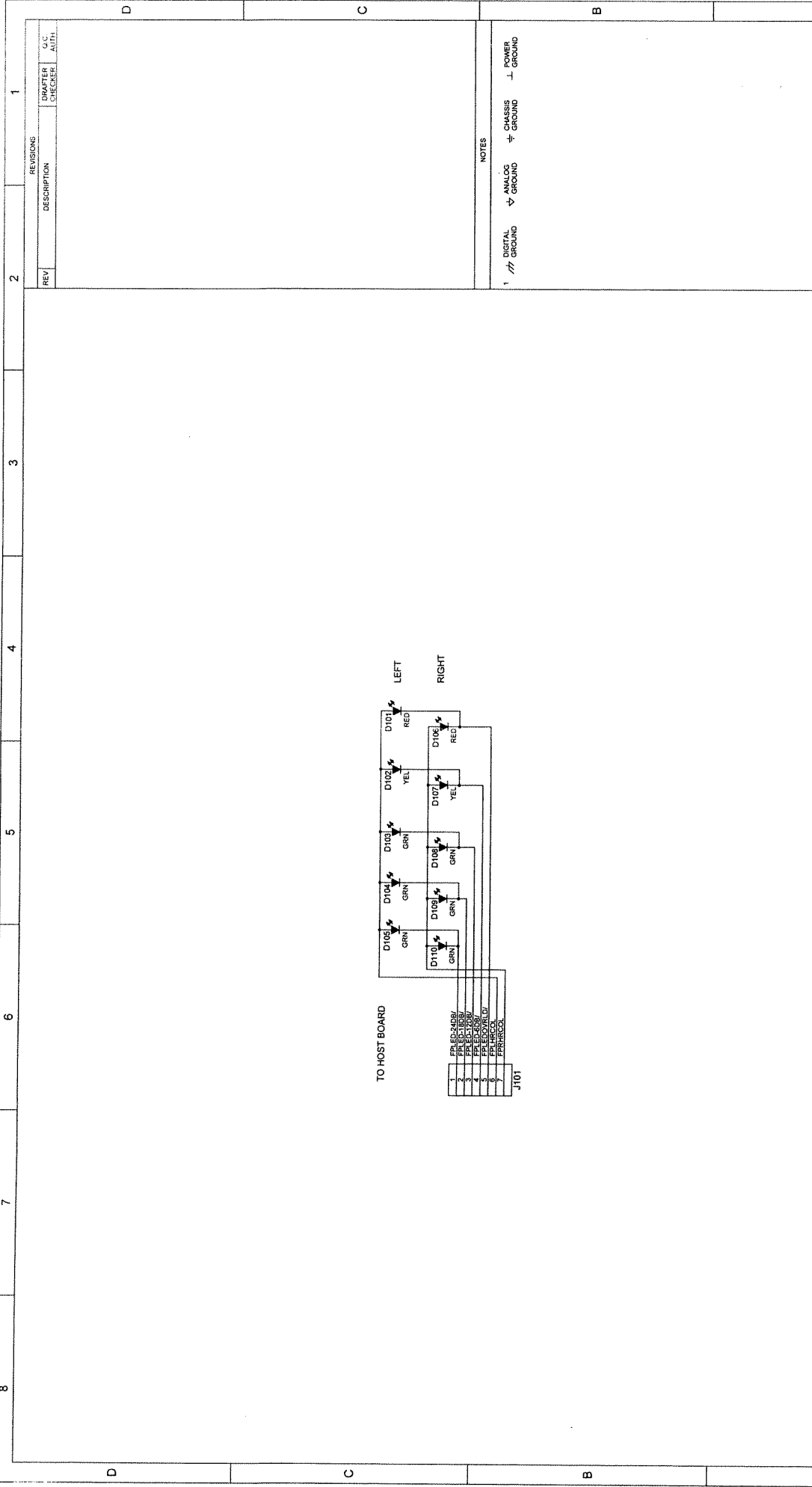
CONTRACT NO.		3 OAK PARK BEDFORD, MA 01730	
APPROVALS		DATE	
DRAWN	RWH	5/20/97	
CHECKED	DHS	8/14/97	
G.C.	CW	8/15/97	
ISSUED	DHS	8/15/97	
TITLE		SCHEM. HDRM BD. M80&190&1	
REV		SIZE	NUMBER
D		8 1/2	0
FILE NAME		800-12691	
PROJECT		12691-0-1	
SHEET		1 OF 1	

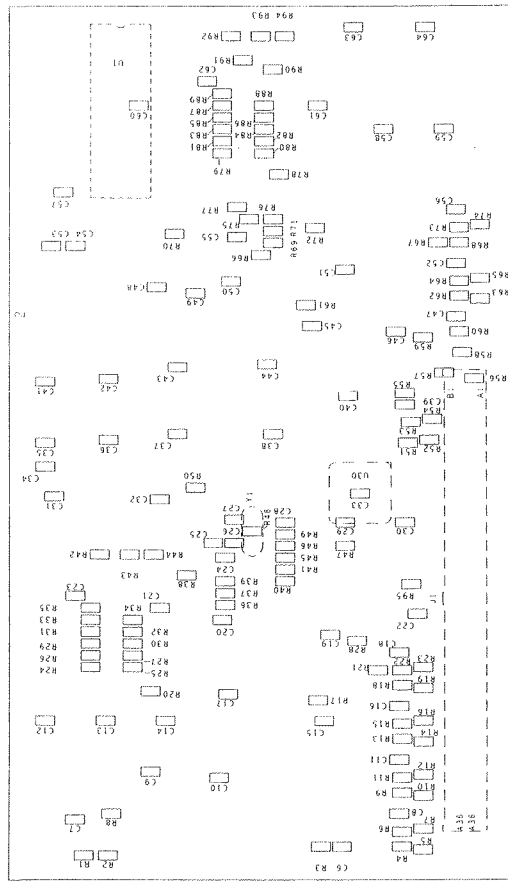
NOTES

1 // DIGITAL GROUND ANALOG GROUND CHASSIS GROUND POWER GROUND

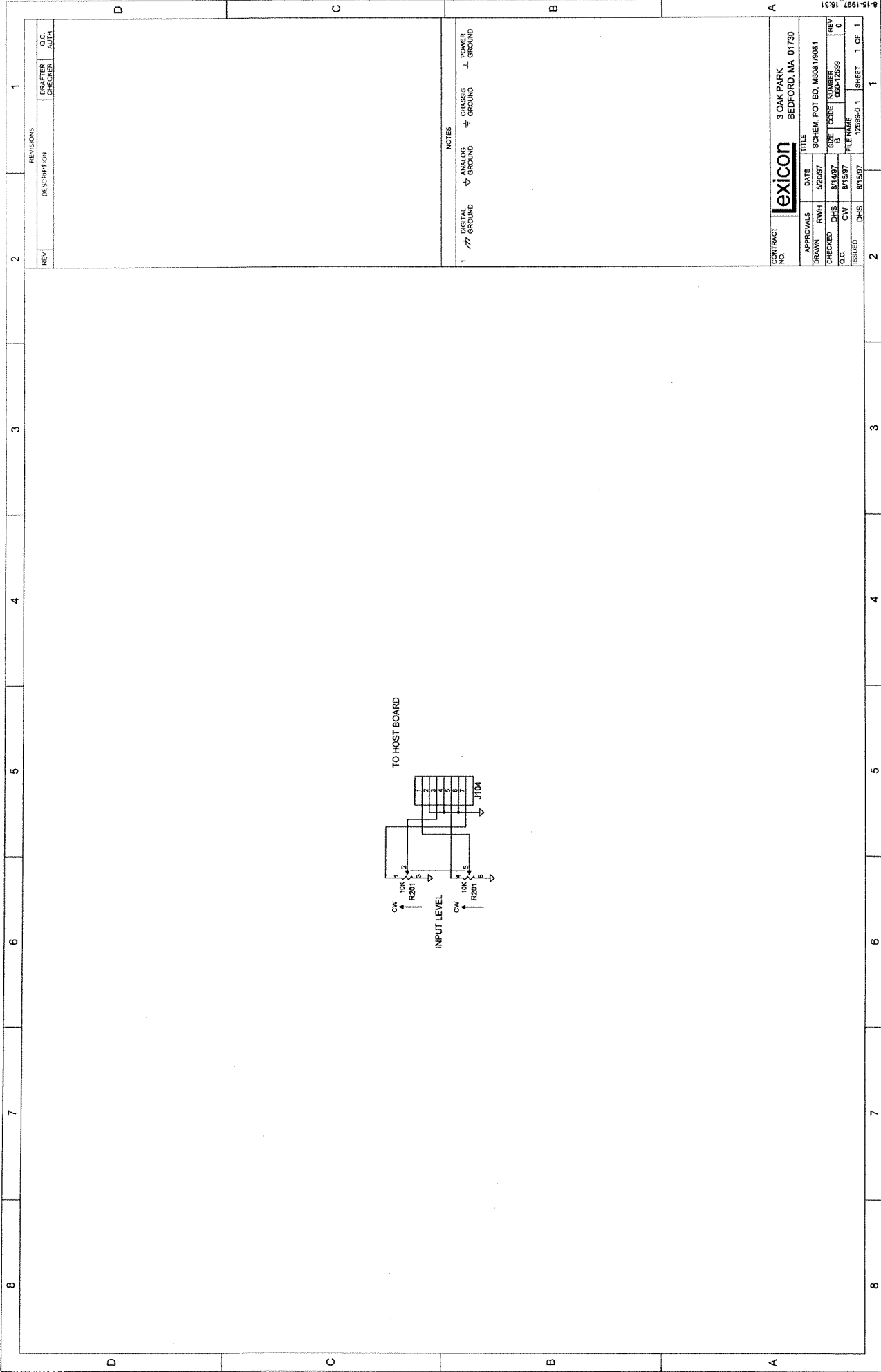


REVISIONS		DRAWN		G.C.	
REV	DESCRIPTION	DATE	BY	NO.	DATE
1					





EXICON
 PC BD. DSP. PCM-91
 REV 3
 COMPONENT LAYOUT
 SCALE: N/A
 SHEET 2 OF 2

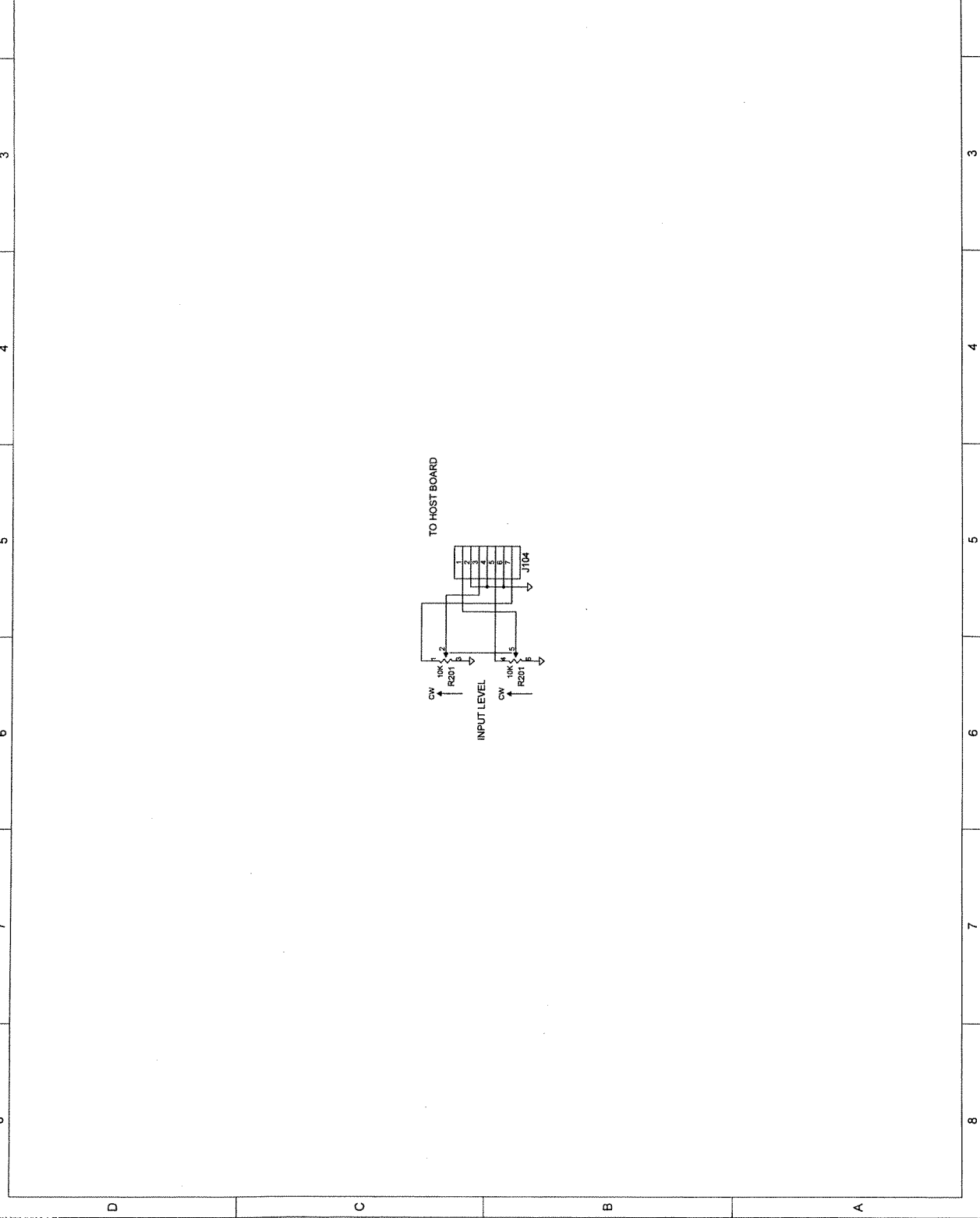


15-1991-13:3

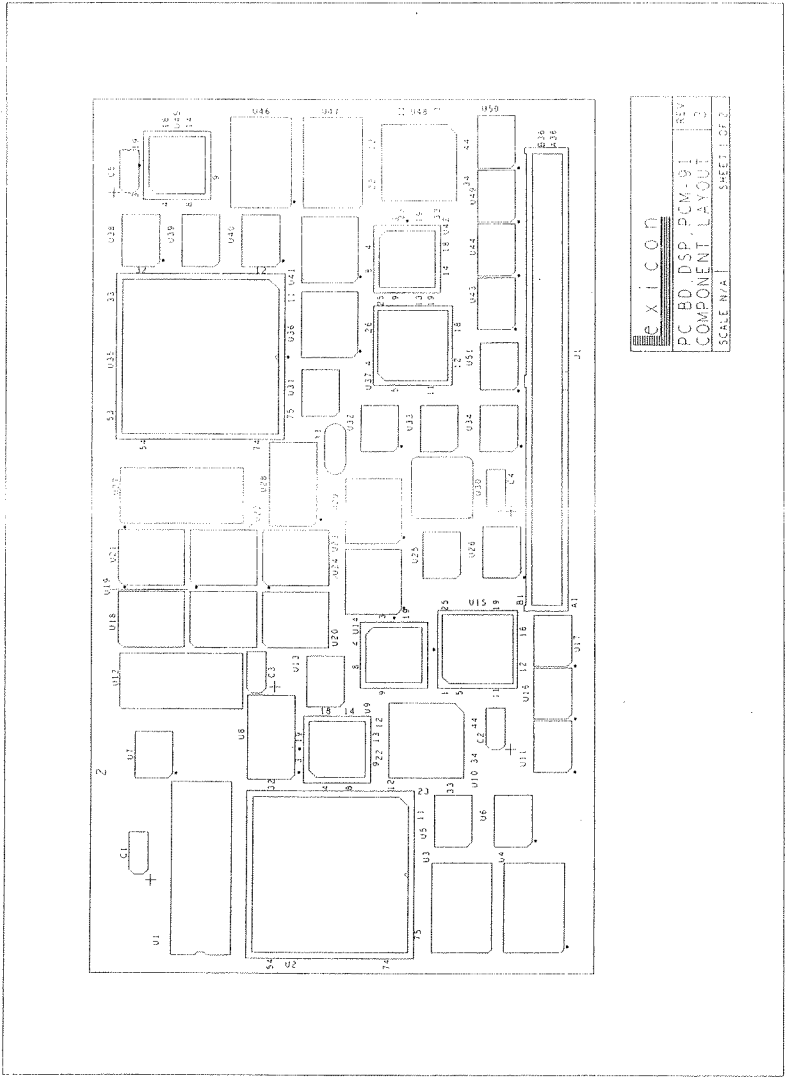
REVISIONS		DRAFTER		O.C.	
REV.	DESCRIPTION	CHECKED	DATE	APPROVALS	TITLE
1					3 CAY PARK BEDFORD, MA 01730
					lexicon
					CONTRACT NO.
					APPROVALS
					DRAWN RWH
					CHECKED DHS
					O.C. CW
					ISSUED DHS
					DATE 5/20/87
					SCHEM. POT. NO. M80&1/50&1
					SIZE CODE NUMBER
					FILE NAME
					1285P-0.1
					SHEET 1 OF 1

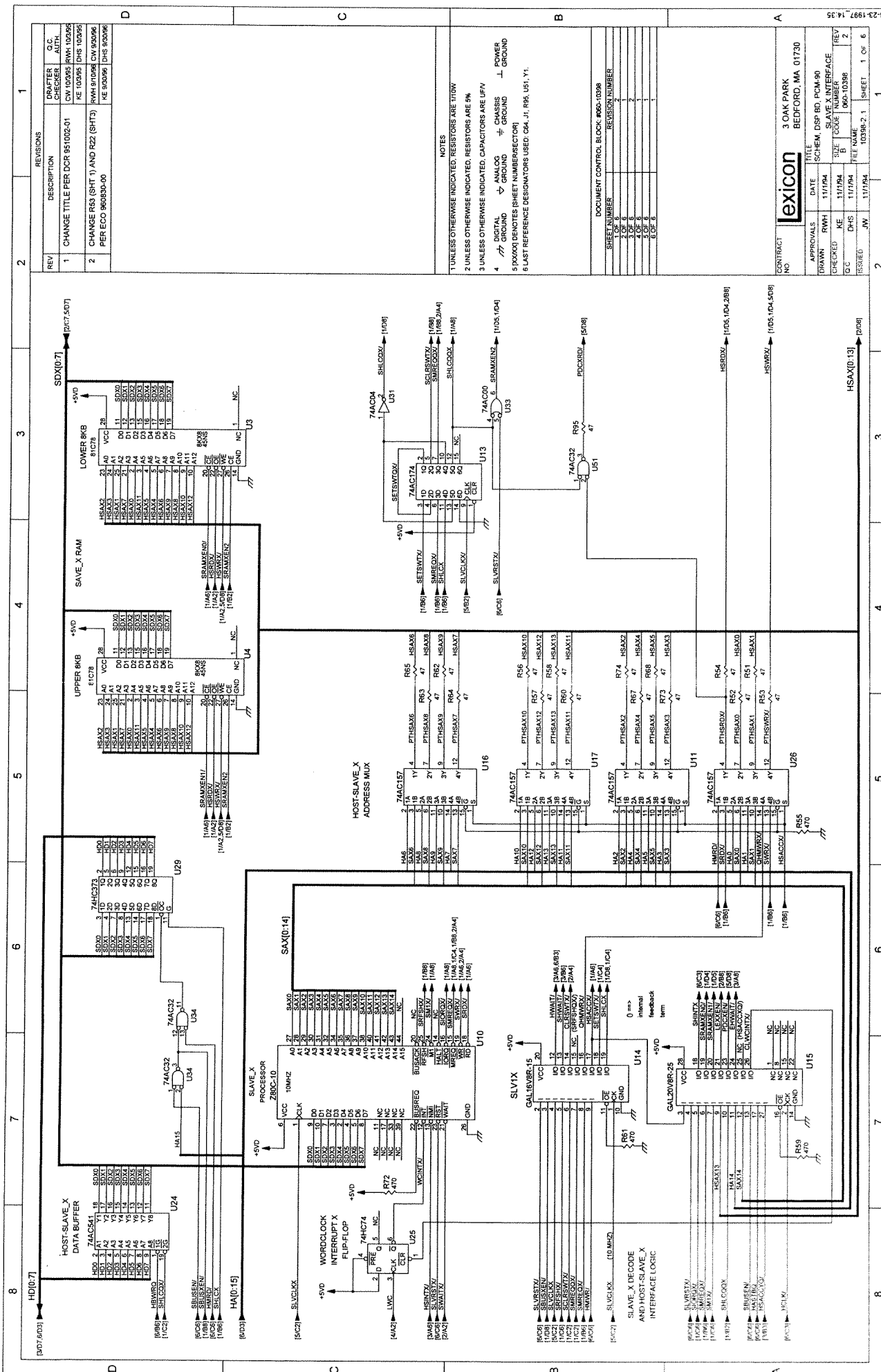
NOTES

1 // DIGITAL GROUND ANALOG GROUND CHASSIS GROUND POWER GROUND



1 2 3 4 5 6 7 8





REV	DESCRIPTION	REVISIONS	DRAFTER	Q.C.
1	CHANGE TITLE PER DCR 851002-01		CV 10095 RWH 10095	AUTH.
2	CHANGE R63 (SHT 1) AND R22 (SHT 3) PER ECO 960930-00		RWH 97098 DW 92096	
			KE 92096	DHS 92096

- NOTES
- UNLESS OTHERWISE INDICATED, RESISTORS ARE 1/16W
 - UNLESS OTHERWISE INDICATED, CAPACITORS ARE 10% TOL
 - UNLESS OTHERWISE INDICATED, CAPACITORS ARE 5% TOL
 - RESISTOR TOLERANCE: 5% UNLESS OTHERWISE INDICATED
 - RESISTOR VALUE: 5% UNLESS OTHERWISE INDICATED
 - RESISTOR VALUE: 5% UNLESS OTHERWISE INDICATED

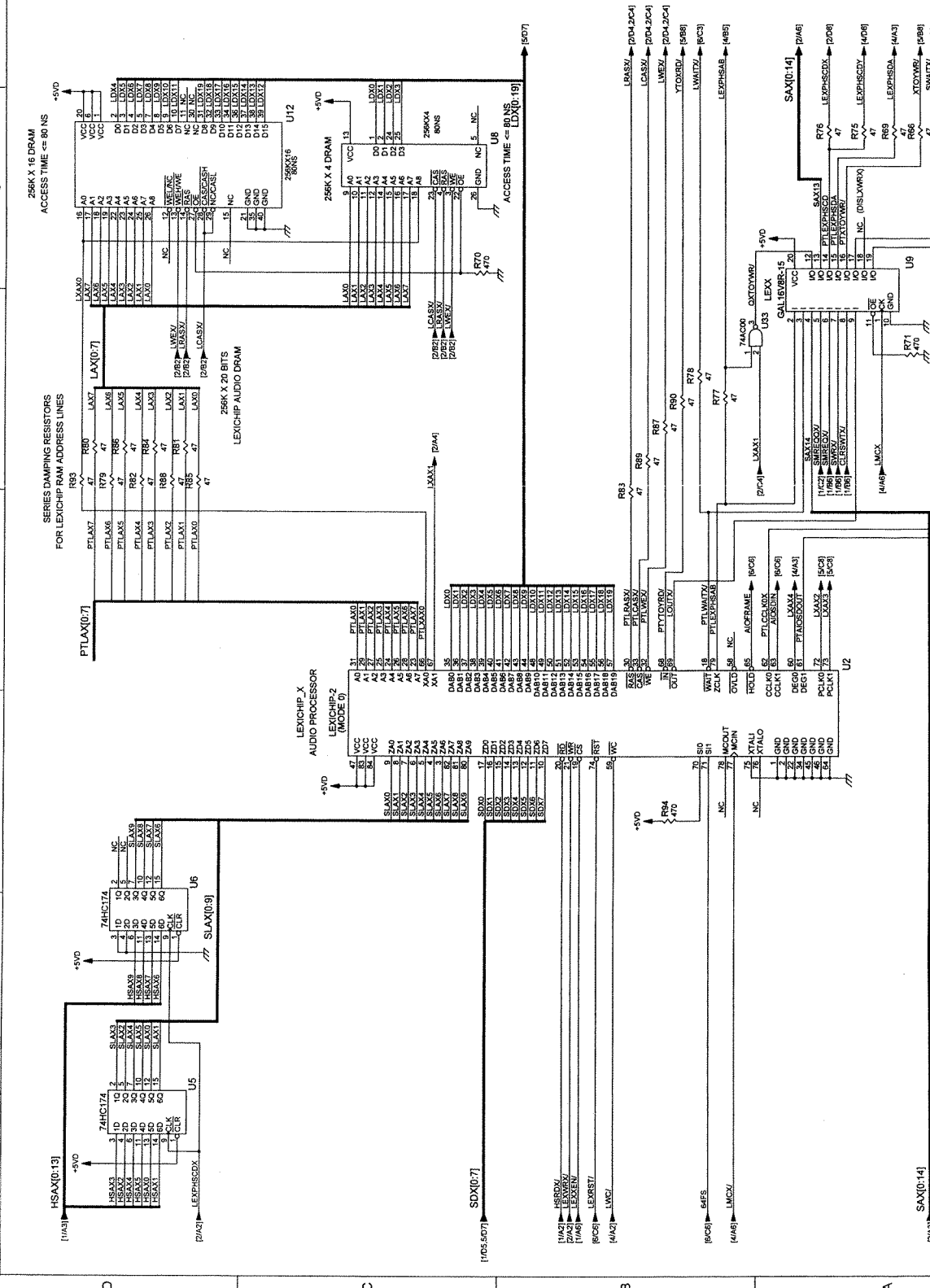
SHEET NUMBER	REVISION NUMBER
1 OF 6	1
2 OF 6	2
3 OF 6	3
4 OF 6	4
5 OF 6	5
6 OF 6	6

APPROVALS		DATE		TITLE	
DRAWN	RWH	11/17/94		SCHEM. DSP BD. PCM-90	
CHECKED	KE	11/17/94		SLAVE X INTERFACE	
DESIGNED	DHS	11/17/94		3 OAK PARK	
RESERVED	JW	11/17/94		BEDFORD, MA 01730	

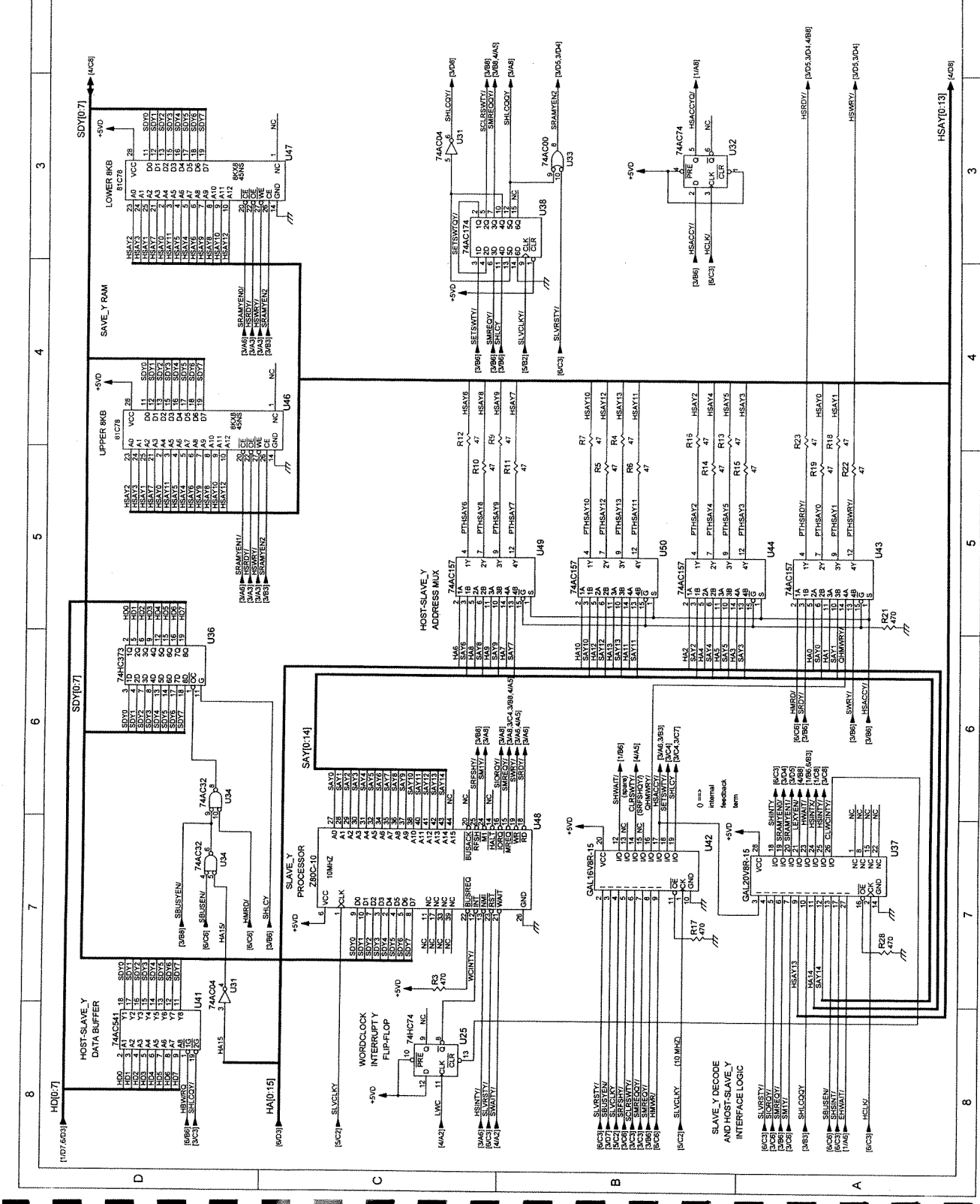
REV	DESCRIPTION	REVISIONS	DATE	BY	CHKD	APP'D	REV
1	CHANGE TITLE PER DCR 85-002-01		11/17/94	KE	KE		1

REV	DESCRIPTION	REVISIONS	DATE	BY	CHKD	APP'D	REV
1	CHANGE TITLE PER DCR 85-002-01		11/17/94	KE	KE		1

REV	DESCRIPTION	REVISIONS	DATE	BY	CHKD	APP'D	REV
1	CHANGE TITLE PER DCR 85-002-01		11/17/94	KE	KE		1

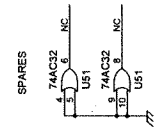
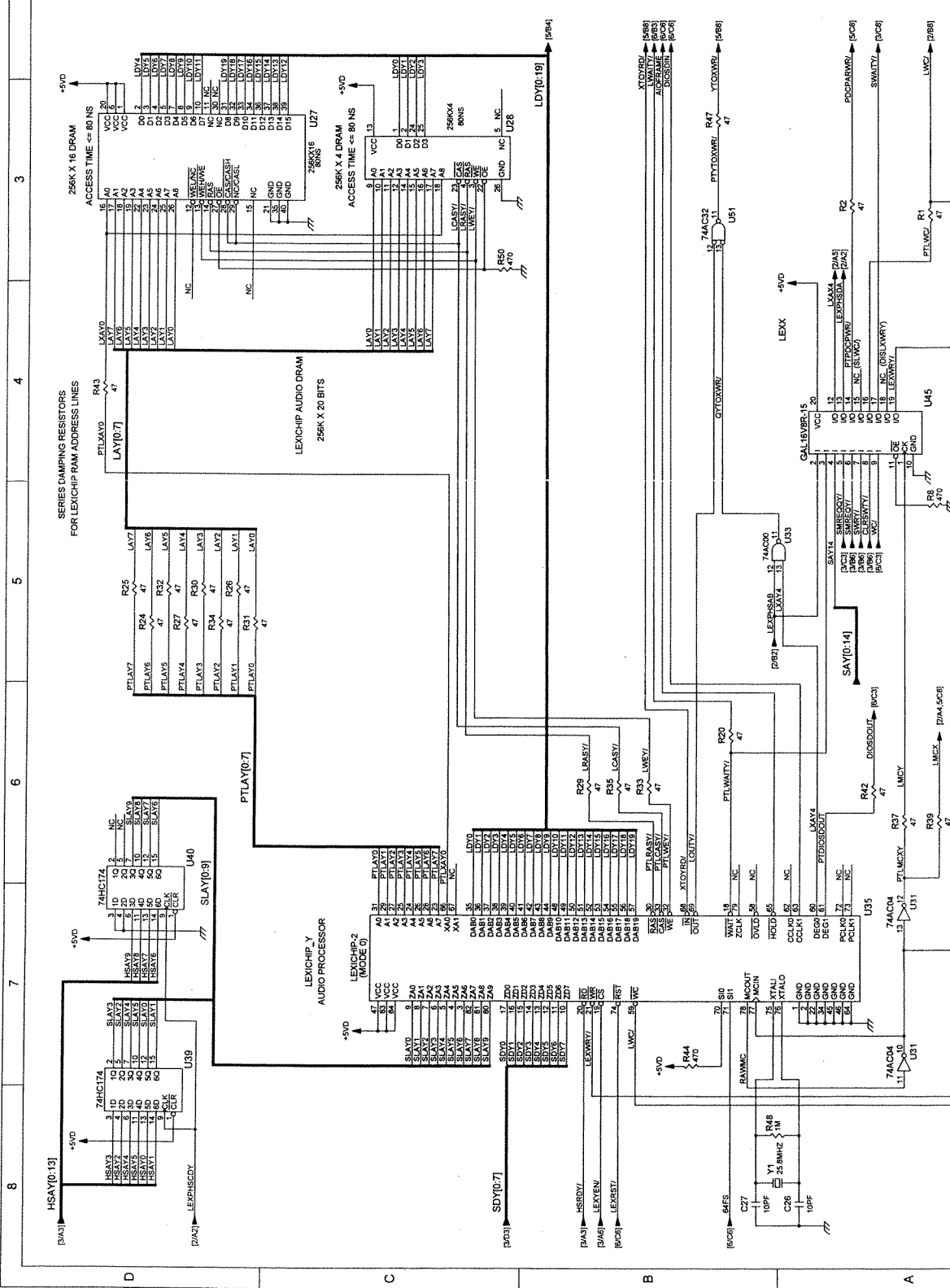


REV	DESCRIPTION	REVISIONS	DRAFTER	C.C. AUTH.
1	CHANGE TITLE PER DCR 95102-01		CW 10095	RHW 10095
2	CHANGE R22 (PER ECO 960330-00)		RHW 97006	CW 97006



REVISIONS		DRAFT		O.C. CONTROL	
REV	DESCRIPTION	DATE	BY	REVISED	BY
1	CHANGE TITLE PER DCR 951002-01	11/1/84	KE	10898	10898

CONTRACT NO.	3 OAK PARK
TITLE	BEDFORD, MA 01730
DATE	11/1/84
DRAWN	RWH
CHECKED	KE
DHS	DHS
ISSUED	3W
FILE NO.	10398-2.4
SIZE	11/1/84
REV	1
SHEET	4 OF 6



lexicon

3 OAK PARK
BEDFORD, MA 01730

DATE 11/1/84
DRAWN RWH
CHECKED KE
DHS DHS

SCHEM. DSP BD, PCM-80
LEXICHP-1
LEXICHP-2

10398-2.4

11/1/84

1

4 OF 6

SHEET

4 OF 6

10398-2.4

11/1/84

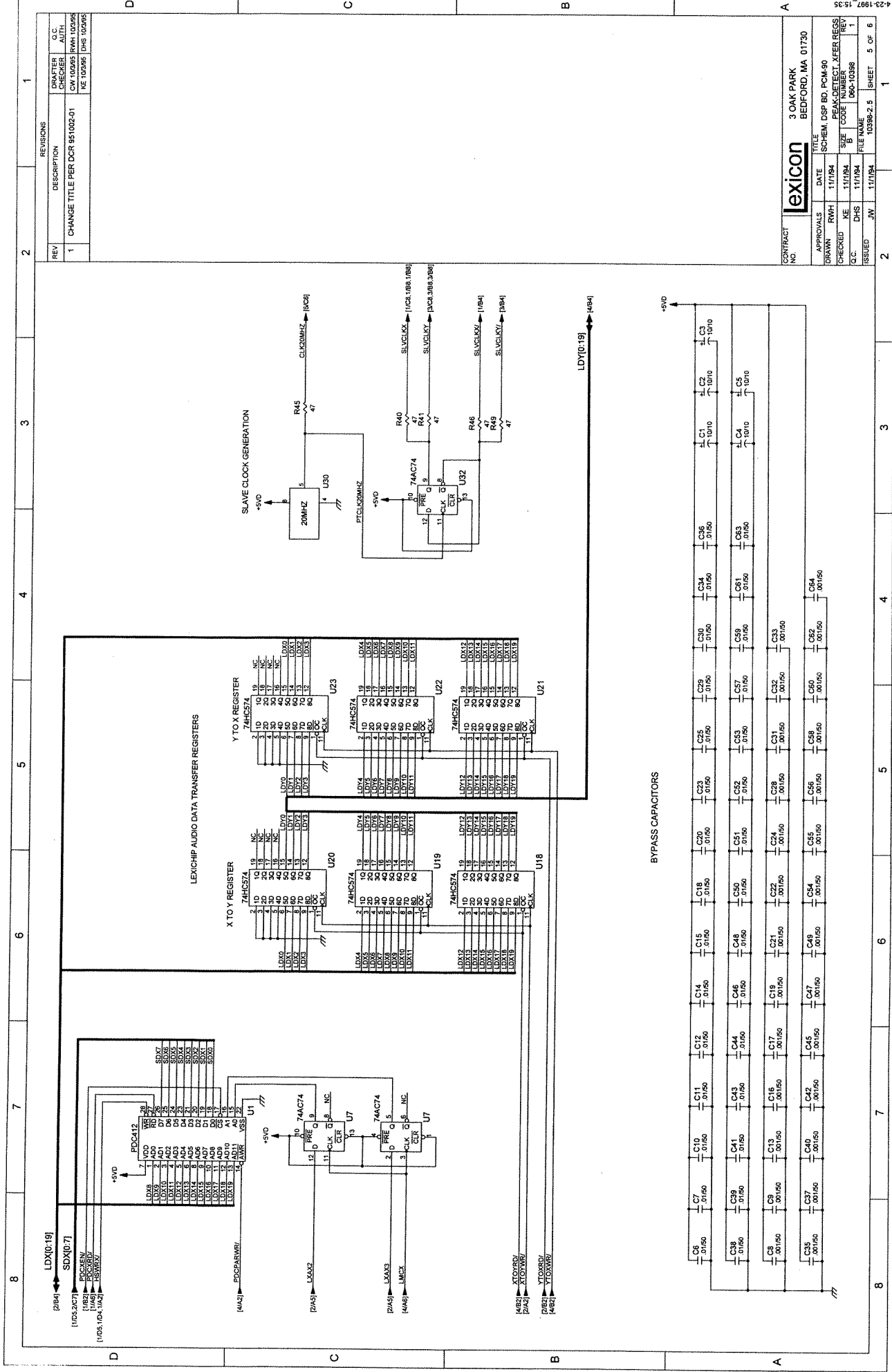
1

4 OF 6

SHEET

4 OF 6

10398-2.4



REV	DESCRIPTION	REVISIONS	DRAWN	CHECKED	DATE
1	CHANGE TITLE PER DCR 851002-01				

REV	DESCRIPTION	REVISIONS	DRAWN	CHECKED	DATE
1	CHANGE TITLE PER DCR 851002-01				

REV	DESCRIPTION	REVISIONS	DRAWN	CHECKED	DATE
1	CHANGE TITLE PER DCR 851002-01				

REV	DESCRIPTION	REVISIONS	DRAWN	CHECKED	DATE
1	CHANGE TITLE PER DCR 851002-01				

REV	DESCRIPTION	REVISIONS	DRAWN	CHECKED	DATE
1	CHANGE TITLE PER DCR 851002-01				

REV	DESCRIPTION	REVISIONS	DRAWN	CHECKED	DATE
1	CHANGE TITLE PER DCR 851002-01				

REV	DESCRIPTION	REVISIONS	DRAWN	CHECKED	DATE
1	CHANGE TITLE PER DCR 851002-01				

REV	DESCRIPTION	REVISIONS	DRAWN	CHECKED	DATE
1	CHANGE TITLE PER DCR 851002-01				

REV	DESCRIPTION	REVISIONS	DRAWN	CHECKED	DATE
1	CHANGE TITLE PER DCR 851002-01				

CONTRACT NO.	TITLE
3 OAK PARK	BEDFORD, MA 01730

APPROVALS	DATE	BY
DRW	11/18/84	SOHEM, DSS RD, DCM, RD
CHEK	11/18/84	ME, 11/18/84
ISS	11/18/84	DHS, 11/18/84

FILE NAME	SIZE	DATE
060-10398	1	11/18/84
060-10398	1	11/18/84

ISSUED	BY	DATE	SHEET	OF
10398-2.5	JW	11/18/84	5	6

