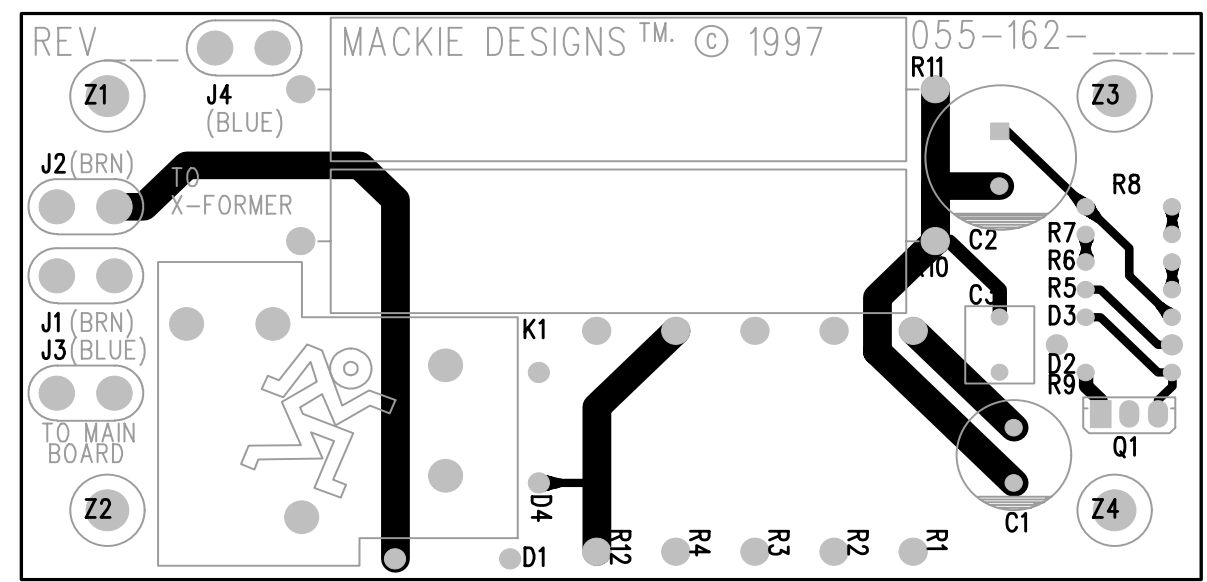
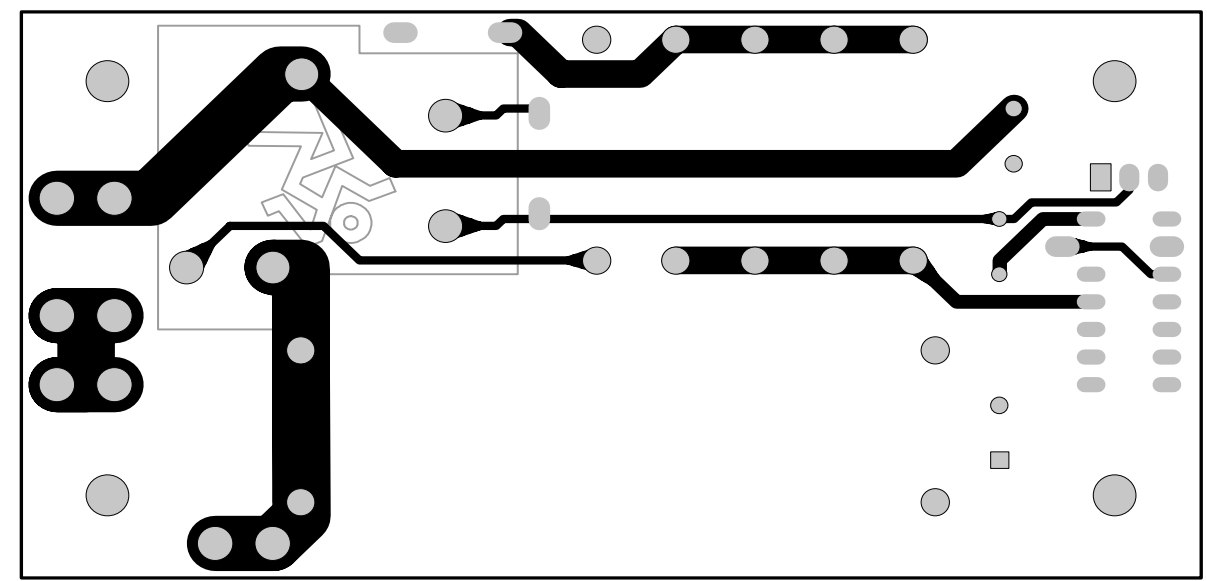


- NOTE: SCHEMATIC IS SHOWN WITH 240VAC VALUES
- **NO STUFF R2-R4 FOR 100VAC OR 120VAC VERSIONS**
XXX
 - **REPLACES R10-R11 FOR 120VAC VERSION**
82 15W
 - **REPLACES R1 FOR 120VAC VERSION**
330 3W
 - **REPLACES R10-R11 FOR 100VAC VERSION**
68 15W
 - **REPLACES R1 FOR 100VAC VERSION**
20 3W
 - PCB, M-1200/M-1400 SOFT START

Solder side



Component side

UNLESS OTHERWISE SPECIFIED DIMENSIONS ARE IN INCHES TOLERANCES ARE: FRACTIONS: DECIMALS: ANGLES: ±NA .XX ±.01 ±MA .XXX ±.005	APPROVALS	DATE	 Mackie Designs Inc. Woodinville, Wa.
	CHECKED: Chuck J	4-15-97	
MATERIAL: SEE NOTES	NP ENG:	DATE	SCHEMATIC, M1400 SOFT START
	Cameron Jones	4-25-97	
FINISH: SEE NOTES	MFG:		SIZE: D SCALE: NONE DWG. NO. 990-162-00 REV. A
	MFG ENG:		
DO NOT SCALE DRAWING	ISSUED:		DWG FILE: SHEET 1 OF 1