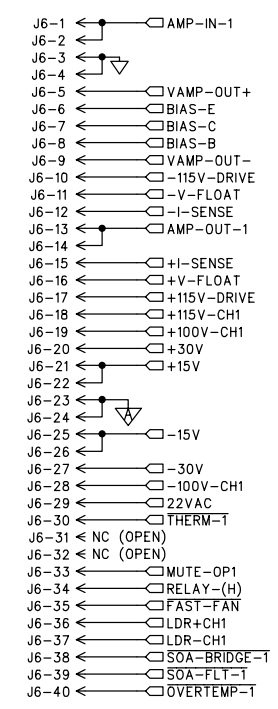
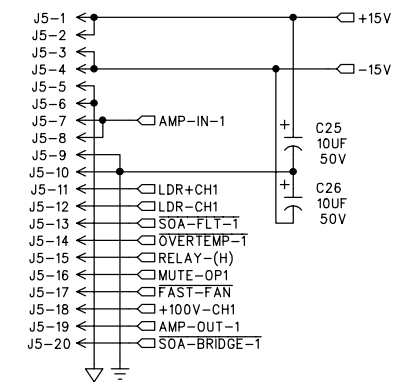


ECO#	REV:	DESCRIPTION	REV. BY:	APP. BY:	DATE
A		RELEASE TO PRODUCTION	TH		9-16-98

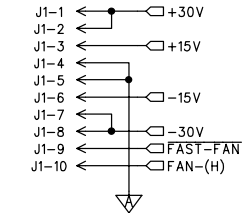
TO V-AMP / PROTECTION PCB
(055-170-00)



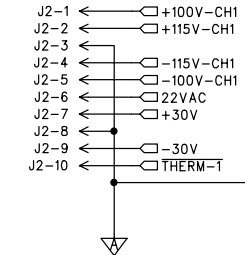
TO INPUT BOARD
(055-131-00)



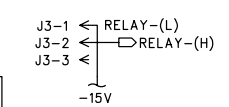
TO +/- 15V / FAN-DRIVE PCB
(055-186-00)



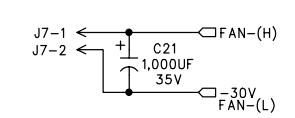
TO SUPPLY PCB
(055-171-XX)



TO PWR DISTR PCB
(055-133-XX)



TO FAN




- J4 TO INPUT PCB (055-131-00)
040-265-00
DIS 14GA BLK/ WHT 4.5IN OD
- J12 TO CH-2 BOARD (055-130-00)
AMP-IN (BLK/WHT)
CH1-CH2 HI CURRENT GND
040-266-00
- J13 TO CH-2 BOARD (055-130-00)
(PCB RING MATING WITH STANDOFF
ON CH-2 BOARD)
CH1-CH2 HI CURRENT GND

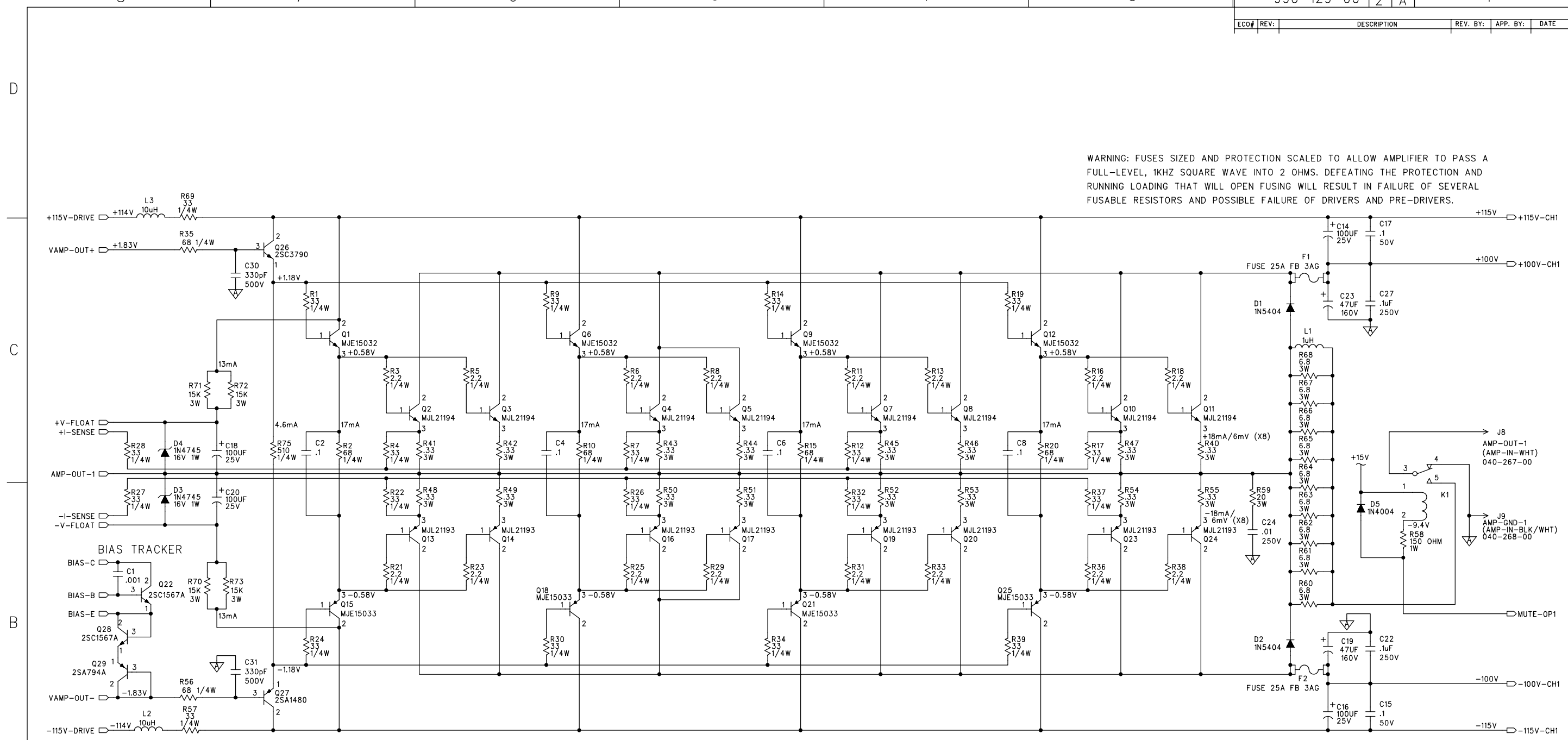
- 490-021-00 MAGNET, .2THK .5DIA
- 450-129-00 PCB, M2600 CH-1 AMP
- 400-129-00 FUSE CLIP 0.25 DIA PC MNT

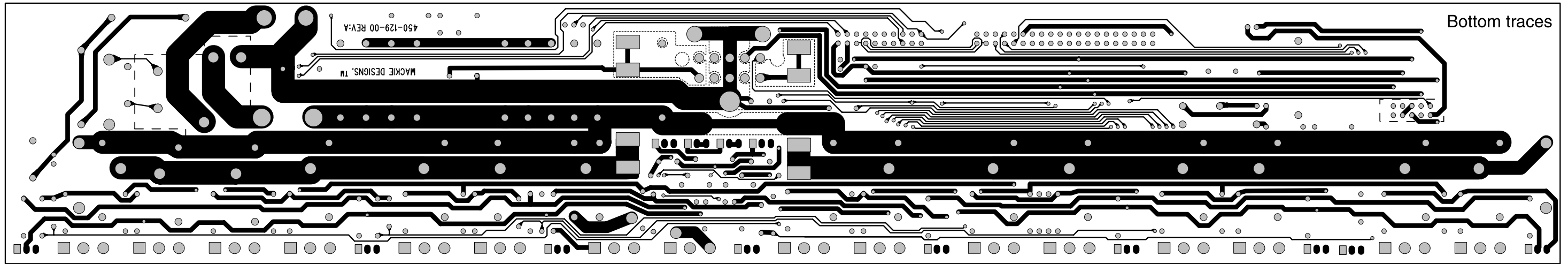
UNLESS OTHERWISE SPECIFIED DIMENSIONS ARE IN INCHES TOLERANCES ARE: FRACTIONS: .XX ±.01 ±.01 DECIMALS: .XXX ±.005 ANGLES: ±NA MATERIAL: SEE NOTES FINISH: SEE NOTES DO NOT SCALE DRAWING	APPROVALS DRAWN: Cameron Jones CHECKED: NP ENG: MFG: MFG ENG: ISSUED:	DATE 1-1-98	 Mackie Designs Inc. Woodinville, Wa. M2600 CHANNEL-1 AMPLIFIER	SIZE: D SCALE: NONE DWG. NO.: 990-129-00 DWG FILE: 1291LAST.SCH	REV. A SHEET 1 OF 2
	MACKIE Mackie Designs Inc. Woodinville, Wa.				
	M2600 CHANNEL-1 AMPLIFIER				
	SIZE: D SCALE: NONE DWG. NO.: 990-129-00 REV. A DWG FILE: 1291LAST.SCH SHEET 1 OF 2				

WARNING: FUSES SIZED AND PROTECTION SCALED TO ALLOW AMPLIFIER TO PASS A FULL-LEVEL, 1KHZ SQUARE WAVE INTO 2 OHMS. DEFEATING THE PROTECTION AND RUNNING LOADING THAT WILL OPEN FUSING WILL RESULT IN FAILURE OF SEVERAL FUSABLE RESISTORS AND POSSIBLE FAILURE OF DRIVERS AND PRE-DRIVERS.

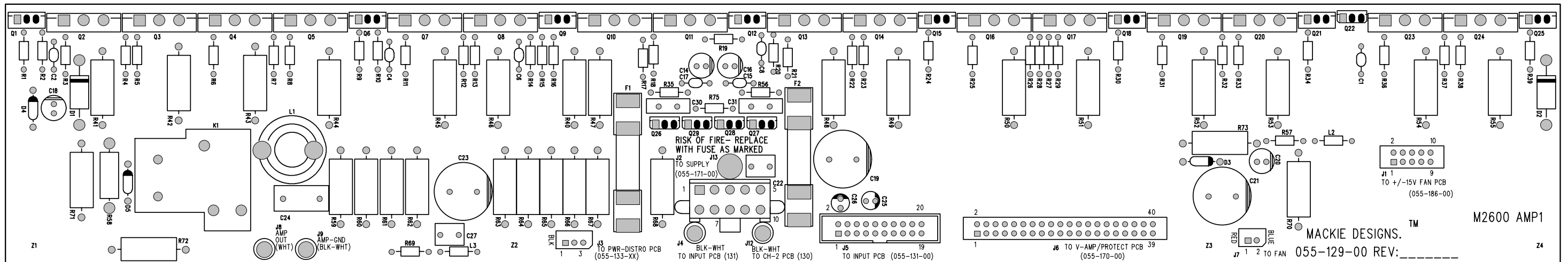
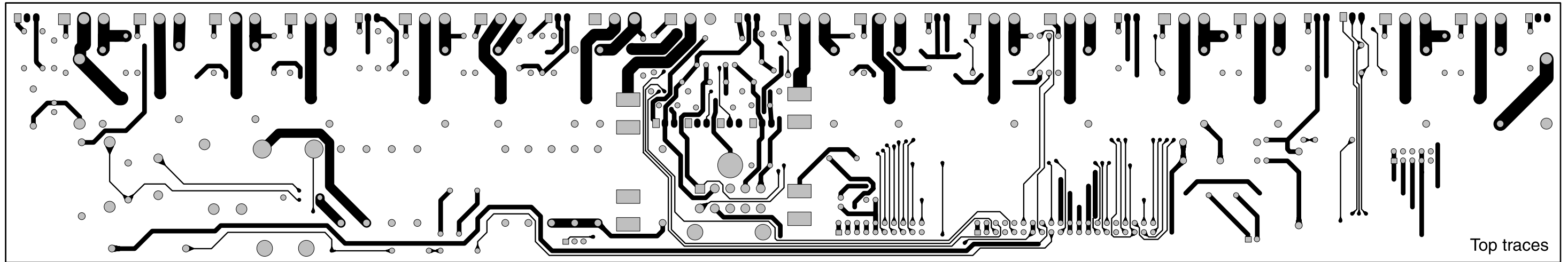
WARNING: FUSES SIZED AND PROTECTION SCALED TO ALLOW AMPLIFIER TO PASS A FULL-LEVEL, 1KHZ SQUARE WAVE INTO 2 OHMS. DEFEATING THE PROTECTION AND RUNNING LOADING THAT WILL OPEN FUSING WILL RESULT IN FAILURE OF SEVERAL FUSABLE RESISTORS AND POSSIBLE FAILURE OF DRIVERS AND PRE-DRIVERS.

UNLESS OTHERWISE SPECIFIED DIMENSIONS ARE IN INCHES TOLERANCES ARE: FRACTIONS: DECIMALS: ANGLES: ±NA .XX ±.01 ±NA .XXX ±.005	APPROVALS	DATE	 Mackie Designs Inc. Woodinville, Wa. M2600 CHANNEL-1 AMPLIFIER
	DRAWN: Cameron Jones	1-1-98	
	CHECKED:		
	NP ENG:		
MATERIAL: SEE NOTES	MATERIAL:		SIZE SCALE: DWG. NO. 990-129-00 REV. A D NONE DWG FILE: 129ILAST.SCH SHEET 2 OF 2
FINISH: SEE NOTES	MFG:		
DO NOT SCALE DRAWING	MFG ENG:		
	ISSUED:		



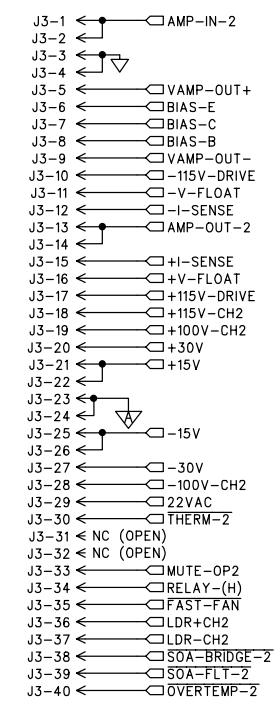


(finely dotted lines represent the copper pour boundaries)

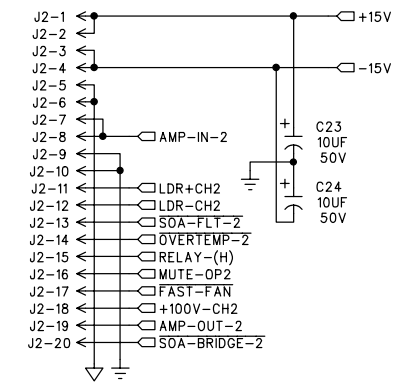


ECO#	REV:	DESCRIPTION	REV. BY:	APP. BY:	DATE
	A	RELEASE TO PRODUCTION	TRH		9-16-98

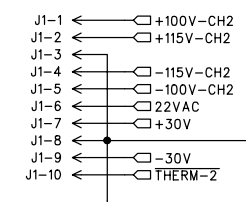
TO V-AMP / PROTECTION PCB
(055-170-00)



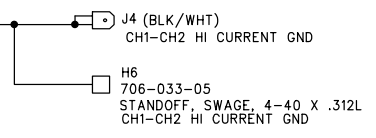
TO INPUT BOARD
(055-131-00)



TO SUPPLY PCB
(055-171-XX)



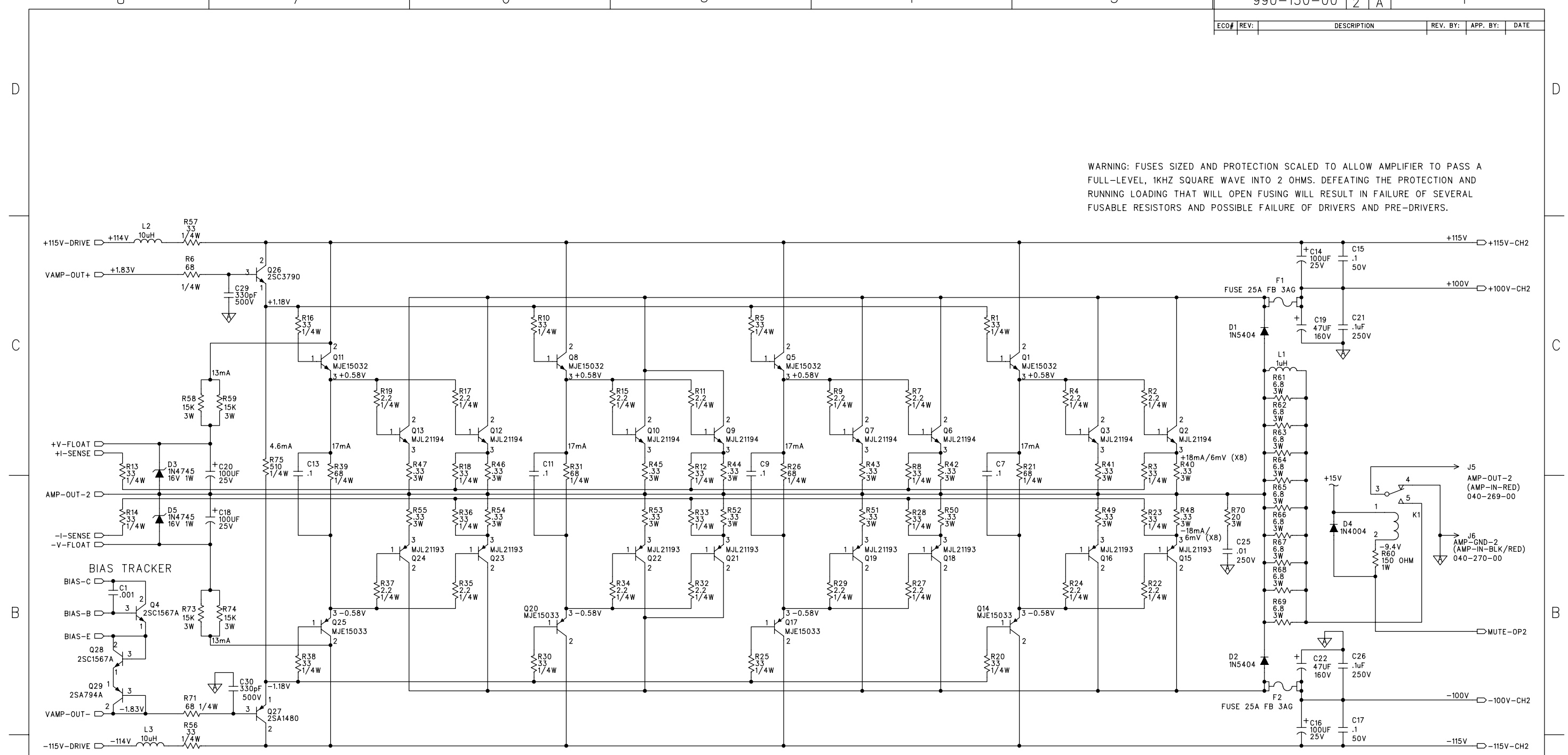
TO AMP-1 PCB
(055-129-00)



- 490-021-00
MAGNET .200 THK X .50 DIA
- 706-033-05
STANDOFF, SWAGE, 4-40 X .312L
- 450-130-00
PCB M2600 CH-2 AMP
- 400-129-00
FUSE CLIP 0.25 DIA PC MNT

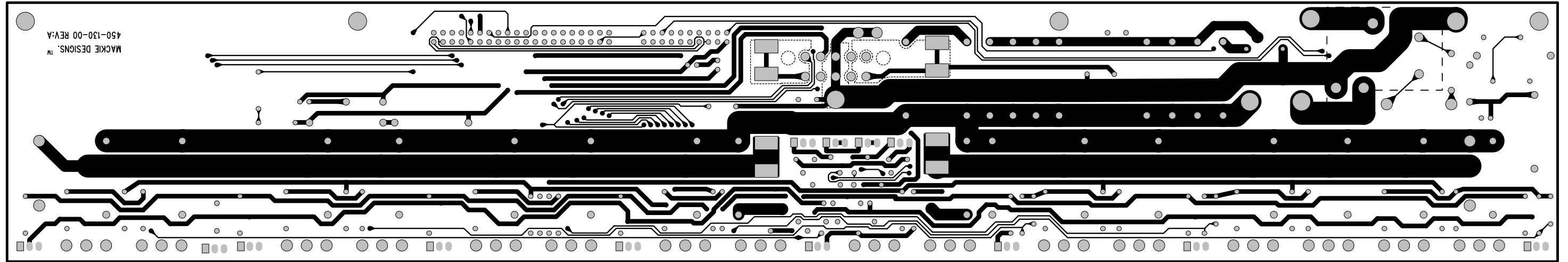
UNLESS OTHERWISE SPECIFIED DIMENSIONS ARE IN INCHES TOLERANCES ARE: FRACTIONS: DECIMALS: ANGLES: ±NA .XX ±.01 ±NA .XXX ±.005	APPROVALS	DATE	 Mackie Designs Inc. Woodinville, Wa.
	DRAWN: Cameron Jones	1-1-98	
	CHECKED:		
	NP ENG:		
MATERIAL: SEE NOTES	MATERIAL:		M2600 CHANNEL-2 AMPLIFIER
FINISH: SEE NOTES	MFG:		
DO NOT SCALE DRAWING	MFG ENG:		
	ISSUED:		SIZE: D SCALE: NONE DWG. NO. 990-130-00 REV. A DWG FILE: SHEET 1 OF 2

WARNING: FUSES SIZED AND PROTECTION SCALED TO ALLOW AMPLIFIER TO PASS A FULL-LEVEL, 1KHZ SQUARE WAVE INTO 2 OHMS. DEFEATING THE PROTECTION AND RUNNING LOADING THAT WILL OPEN FUSING WILL RESULT IN FAILURE OF SEVERAL FUSABLE RESISTORS AND POSSIBLE FAILURE OF DRIVERS AND PRE-DRIVERS.



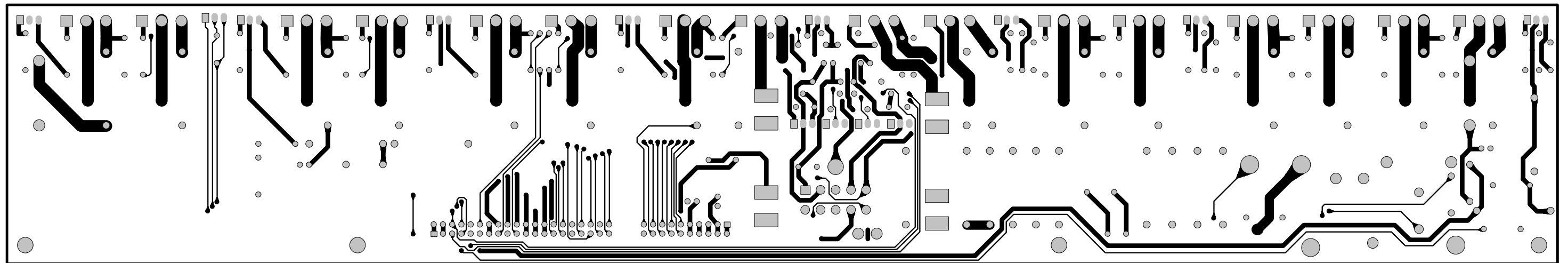
WARNING: FUSES SIZED AND PROTECTION SCALED TO ALLOW AMPLIFIER TO PASS A FULL-LEVEL, 1KHZ SQUARE WAVE INTO 2 OHMS. DEFEATING THE PROTECTION AND RUNNING LOADING THAT WILL OPEN FUSING WILL RESULT IN FAILURE OF SEVERAL FUSABLE RESISTORS AND POSSIBLE FAILURE OF DRIVERS AND PRE-DRIVERS.

UNLESS OTHERWISE SPECIFIED DIMENSIONS ARE IN INCHES. TOLERANCES ARE: FRACTIONS: DECIMALS: ANGLES: ±NA .XX ±.01 ±NA .XXX ±.005	APPROVALS	DATE			
	DRAWN: Cameron Jones	1-1-98			
	CHECKED:				
	NP ENG:				
MATERIAL:	MATERIAL:		M2600 CHANNEL-2 AMPLIFIER		
SEE NOTES	MFG:				
SEE NOTES	MFG ENG:				
DO NOT SCALE DRAWING	ISSUED:				
		SIZE: D	SCALE: NONE	DWG. NO. 990-130-00	REV. A
		DWG FILE:			SHEET 2 OF 2

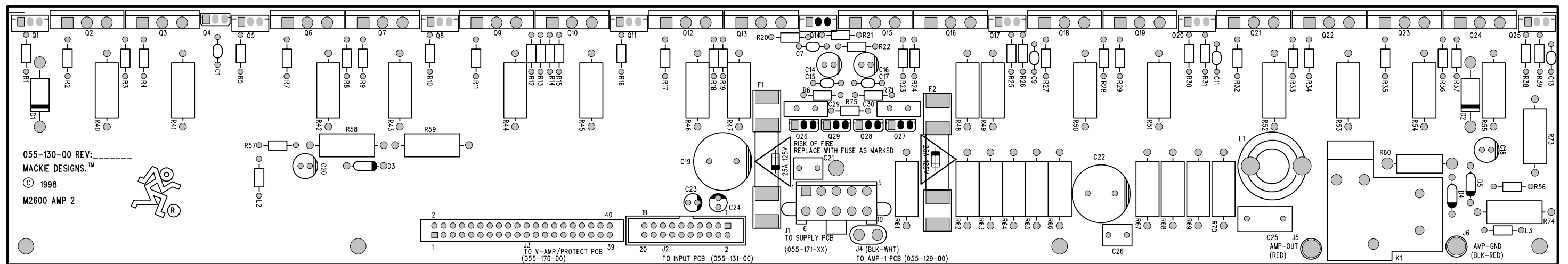


(finely dotted lines represent the copper pour boundaries)

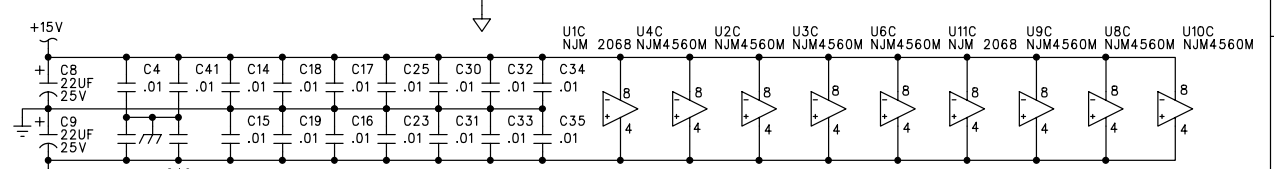
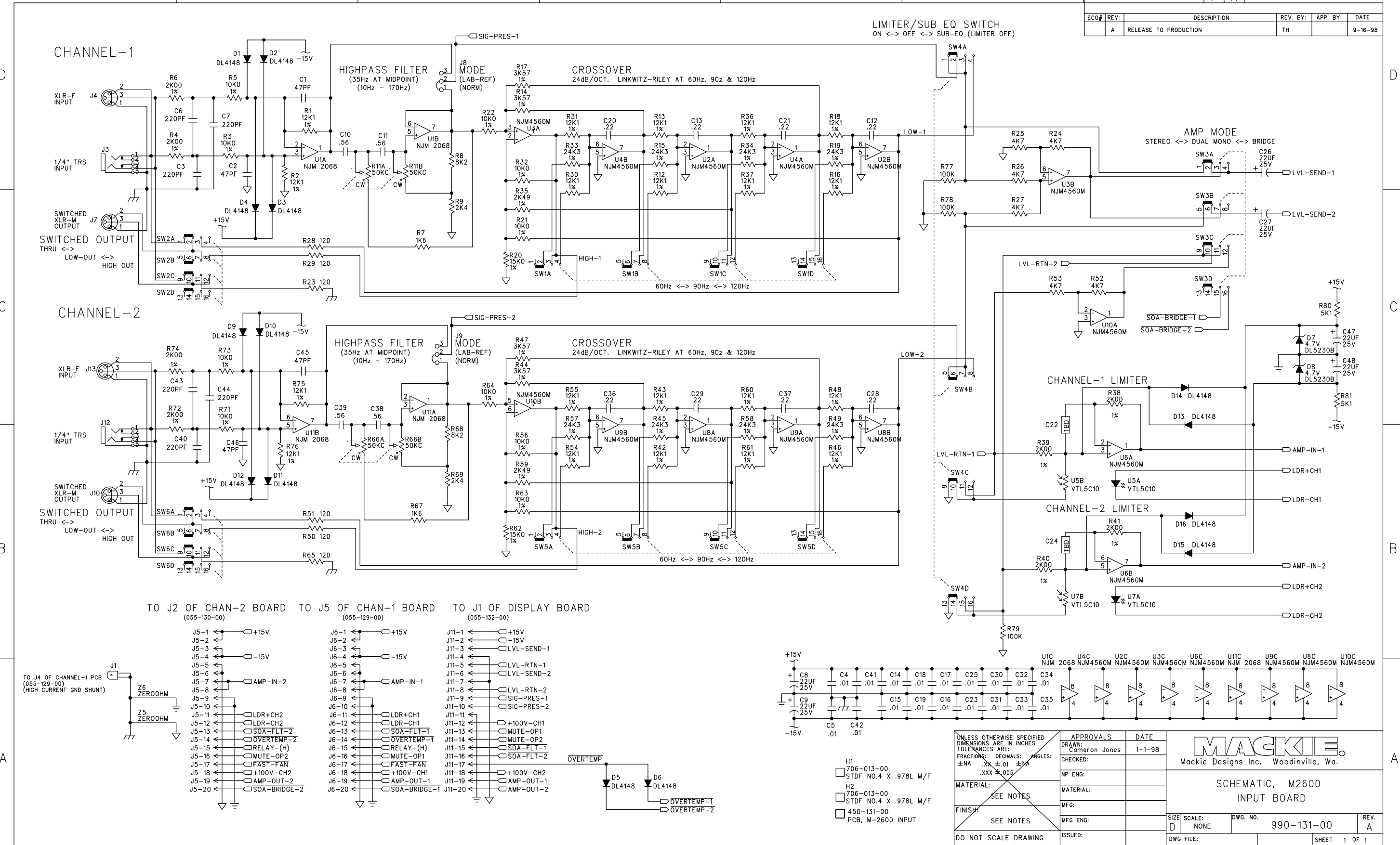
Bottom traces



Top traces



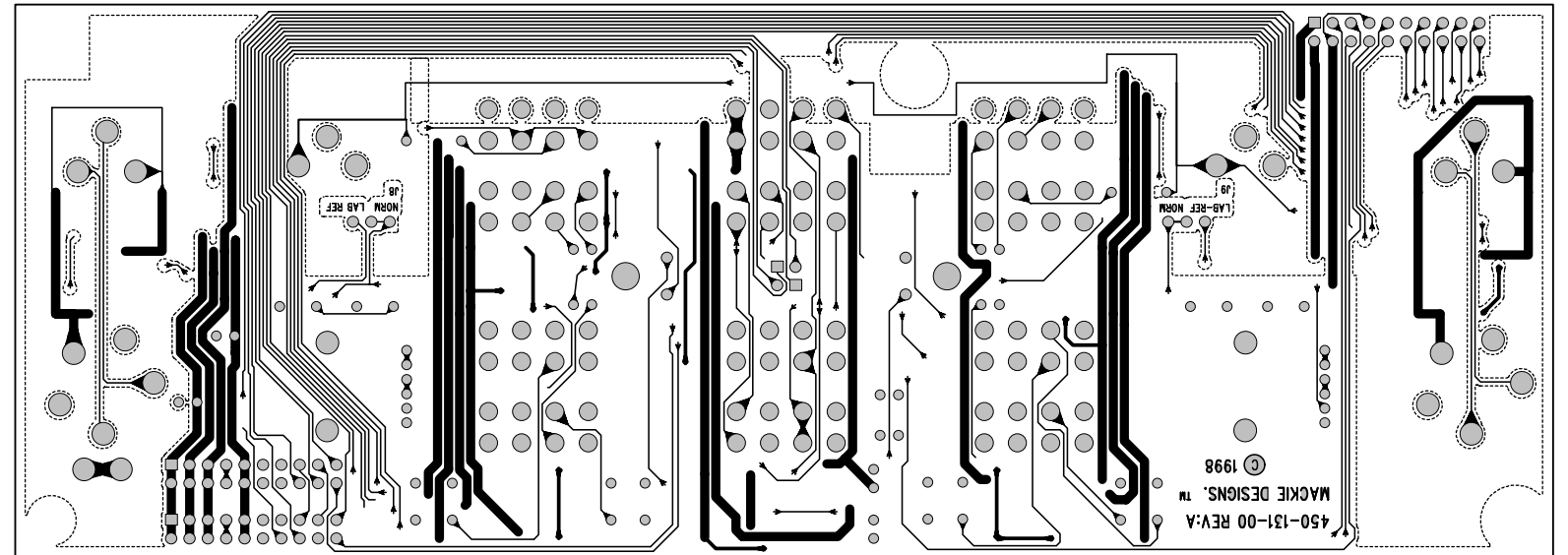
ECO#	REV:	DESCRIPTION	REV. BY:	APP. BY:	DATE
A	1	RELEASE TO PRODUCTION	TH		9-16-98



APPROVALS		DATE
DRAWN: Cameron Jones		1-1-98
CHECKED:		
NP ENG:		
MATERIAL:		
MFG:		
MFG ENG:		
ISSUED:		

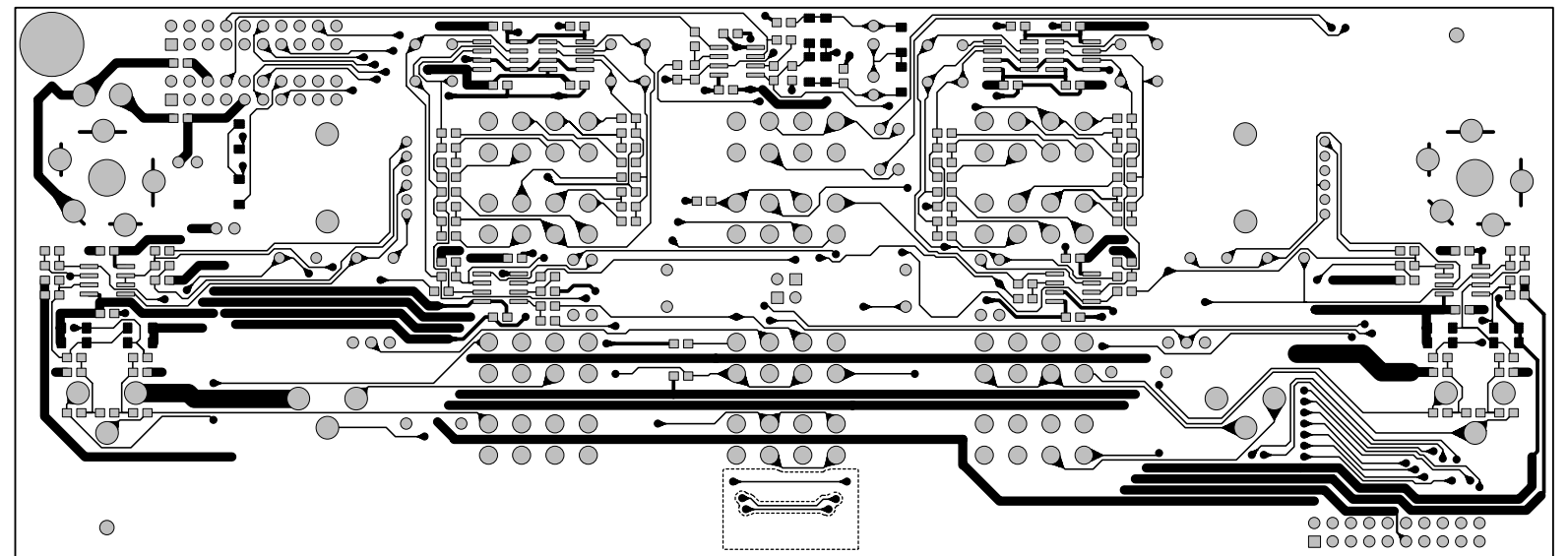
SIZE	SCALE:	DWG. NO.	REV.
D	NONE	990-131-00	A

MACKIE	
Mackie Designs Inc. Woodinville, Wa.	
SCHEMATIC, M2600 INPUT BOARD	
DWG FILE:	SHEET 1 OF 1

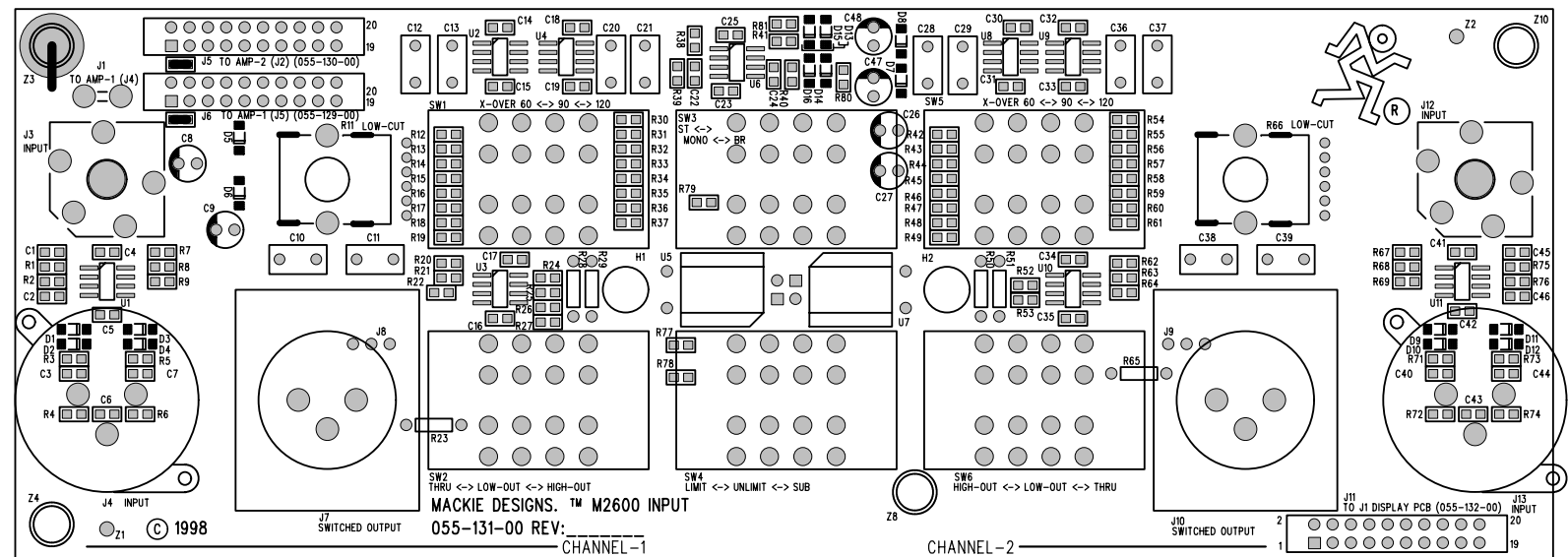


(finely dotted lines show the copper pour boundaries)

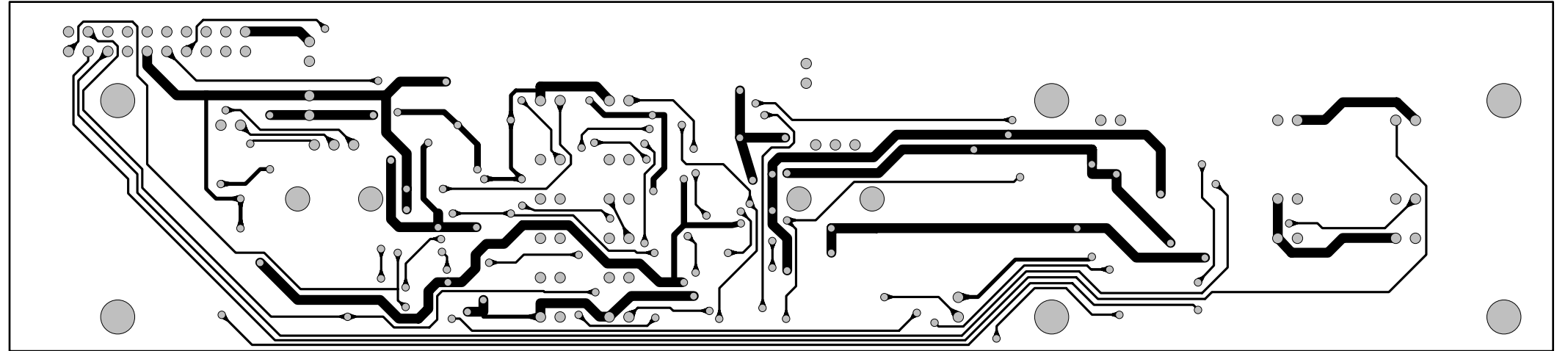
Bottom traces



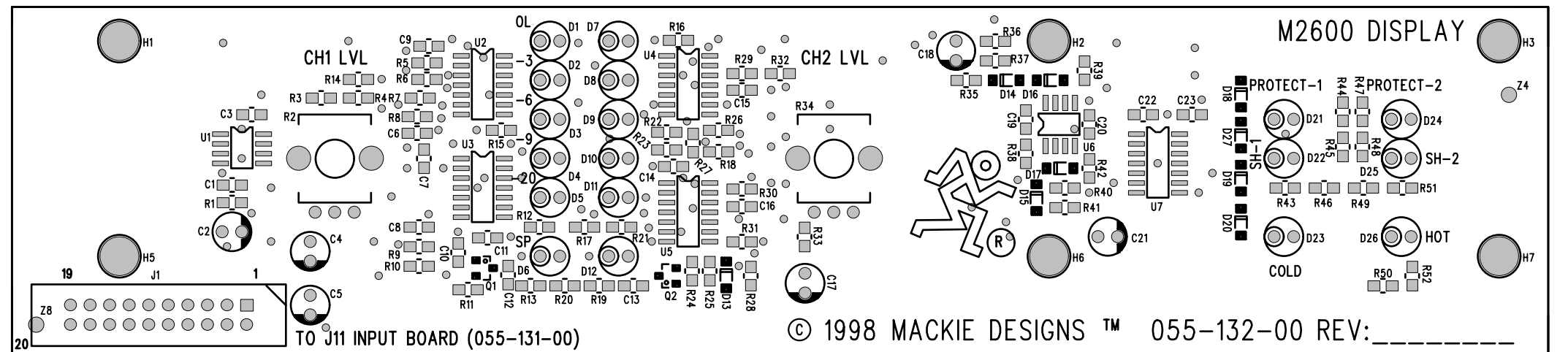
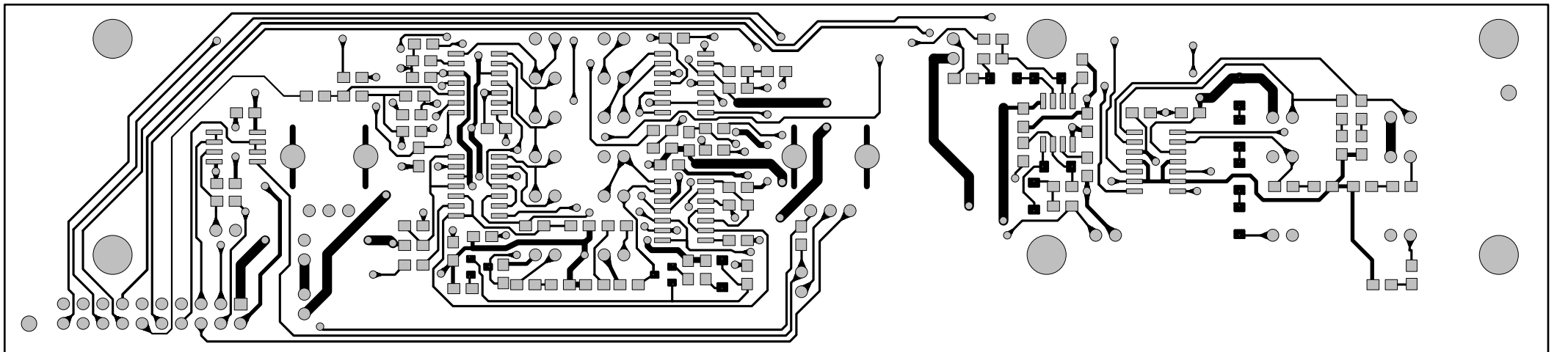
Top traces



Bottom
Traces

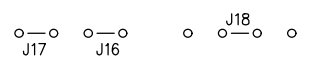


Top
Traces



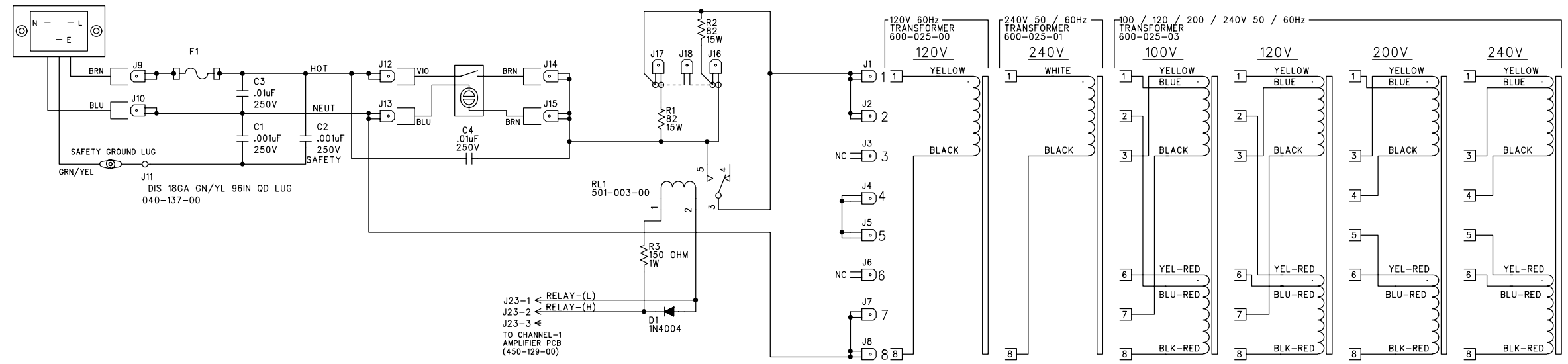
ECO#	REV:	DESCRIPTION	REV. BY:	APP. BY:	DATE
A		RELEASE TO PRODUCTION	TH		9-22-98

INRUSH LIMIT JUMPERS:
100V-120V 200V-240V



DASH	VERSION	QUICK DISC USED
-00	120VAC	J16 AND J17
-01	200 - 240VAC	J18
-02	100VAC	J16 AND J17

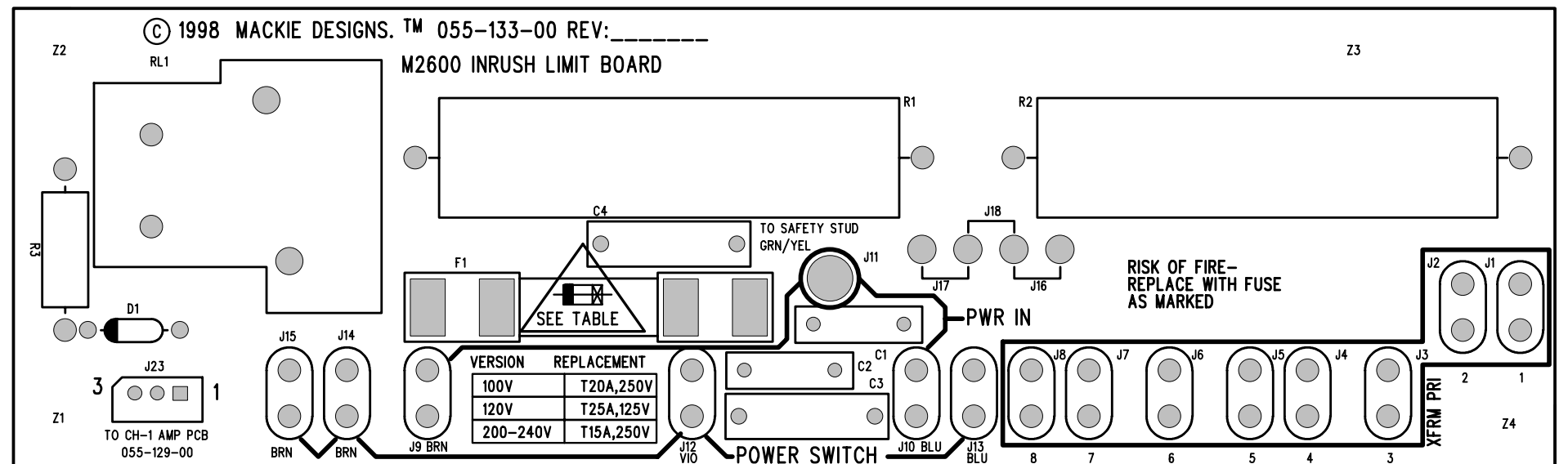
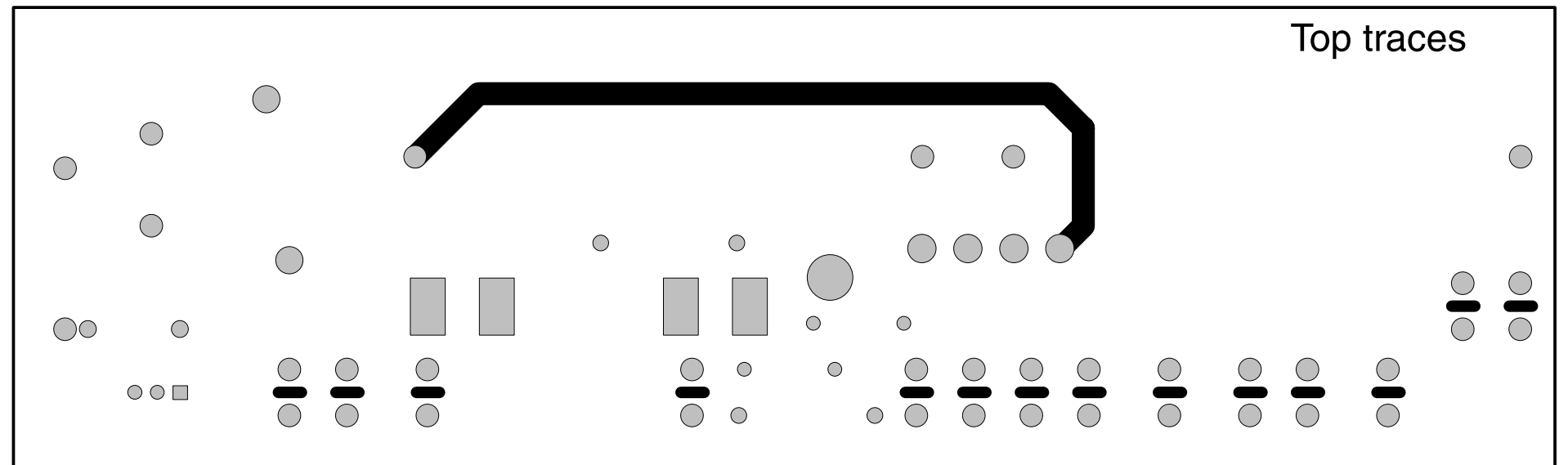
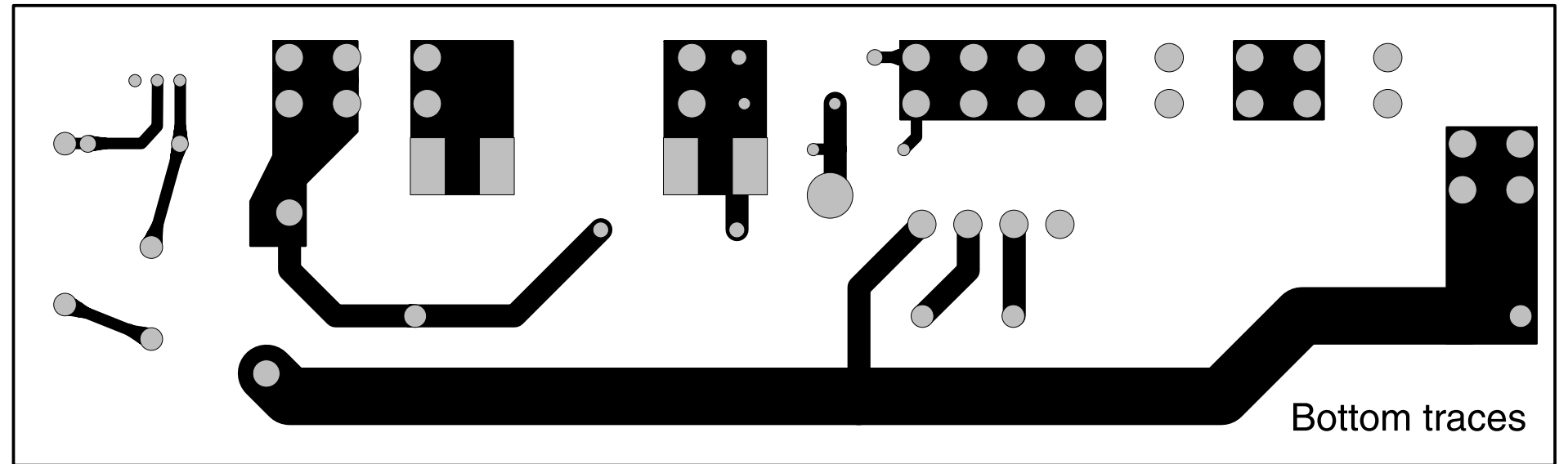
DASH	VERSION	FUSE USED (F1)
-00	120VAC	25A SLO-BLO 510-033-00
-01	200 - 240VAC	15A SLO-BLO 510-018-00
-02	100VAC	20A SLO-BLO 510-017-00



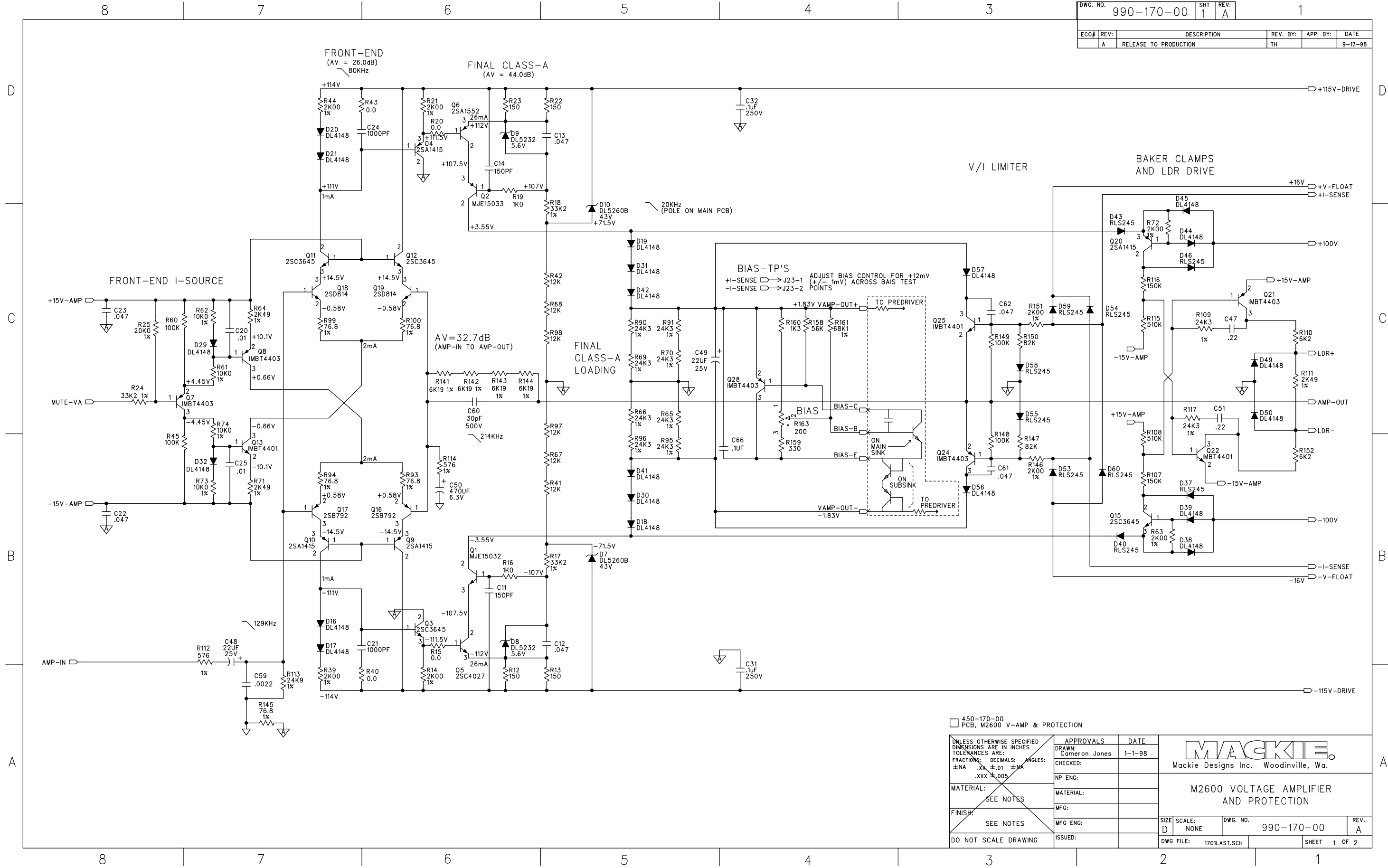
J23-1 ← RELAY-(L)
J23-2 ← RELAY-(H)
J23-3 ←
TO CHANNEL-1
AMPLIFIER PCB
(450-129-00)

- 510-033-00
FUSE 25A SLO-BLO -00 ASSY ONLY
- 510-018-00
FUSE 15A SLO-BLO -01 ASSY ONLY
- 510-017-00
FUSE 20A SLO-BLO -02 ASSY ONLY
- 450-133-00
PCB, M2600 PWR DISTRO & AC-INRUSH
- 400-129-00
FUSE CLIP 0.25 DIA PC MNT

UNLESS OTHERWISE SPECIFIED DIMENSIONS ARE IN INCHES TOLERANCES ARE: FRACTIONS: DECIMALS: ANGLES: ±.NA .XX ±.01 ±NA .XXX ±.005	APPROVALS	DATE	MACKIE. Mackie Designs Inc. Woodinville, Wa.
	DRAWN: Cameron Jones	1-1-98	
MATERIAL: SEE NOTES	CHECKED:		M2600 PWR DISTRO & INRUSH LIMIT
	NP ENG: Cameron Jones	1-1-98	
FINISH: SEE NOTES	MATERIAL:		SIZE SCALE: DWG. NO. REV. D NONE 990-133-00 A
DO NOT SCALE DRAWING	MFG ENG:		
	ISSUED:		DWG FILE: SHEET 1 OF 1



ECO#	REV:	DESCRIPTION	REV. BY:	APP. BY:	DATE
A		RELEASE TO PRODUCTION	TH		9-17-98



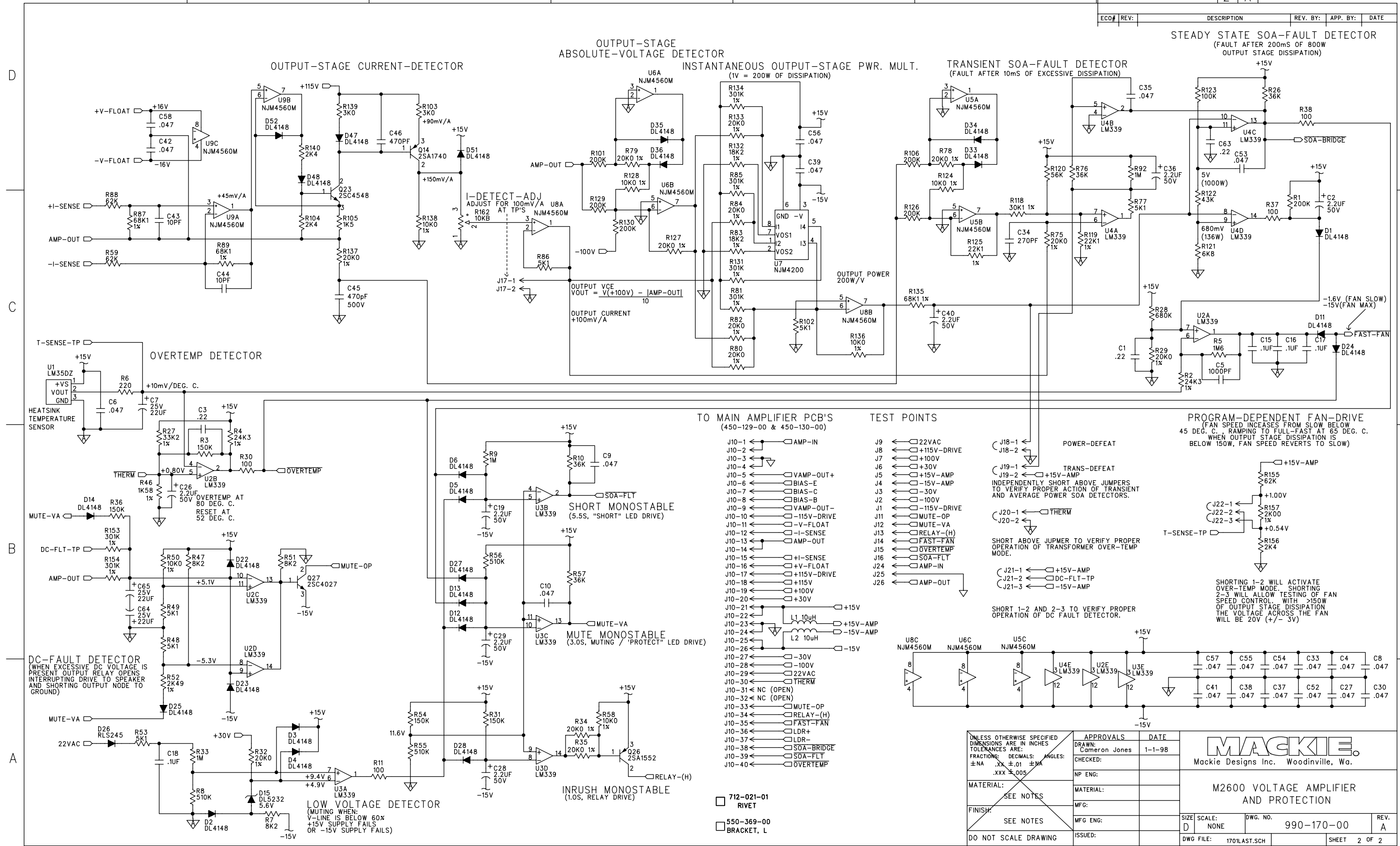
450-170-00
PCB, M2600 V-AMP & PROTECTION

UNLESS OTHERWISE SPECIFIED DIMENSIONS ARE IN INCHES TOLERANCES ARE:	APPROVALS	DATE
FRACTIONS: DECIMALS: ANGLES: ±.NA .XX ±.01 ±NA .XXX ±.005	DRAWN: Cameron Jones	1-1-98
MATERIAL: SEE NOTES	CHECKED:	
FINISH: SEE NOTES	NP ENG:	
DO NOT SCALE DRAWING	MATERIAL:	
	MFG:	
	MFG ENG:	
	ISSUED:	

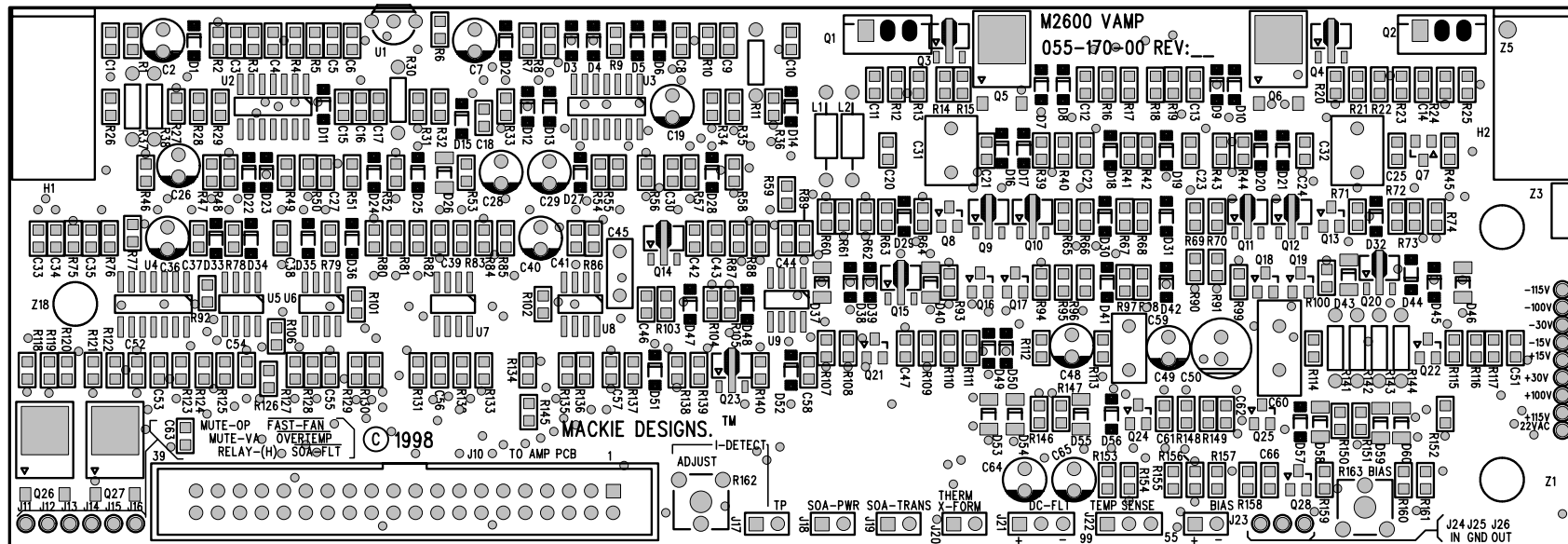
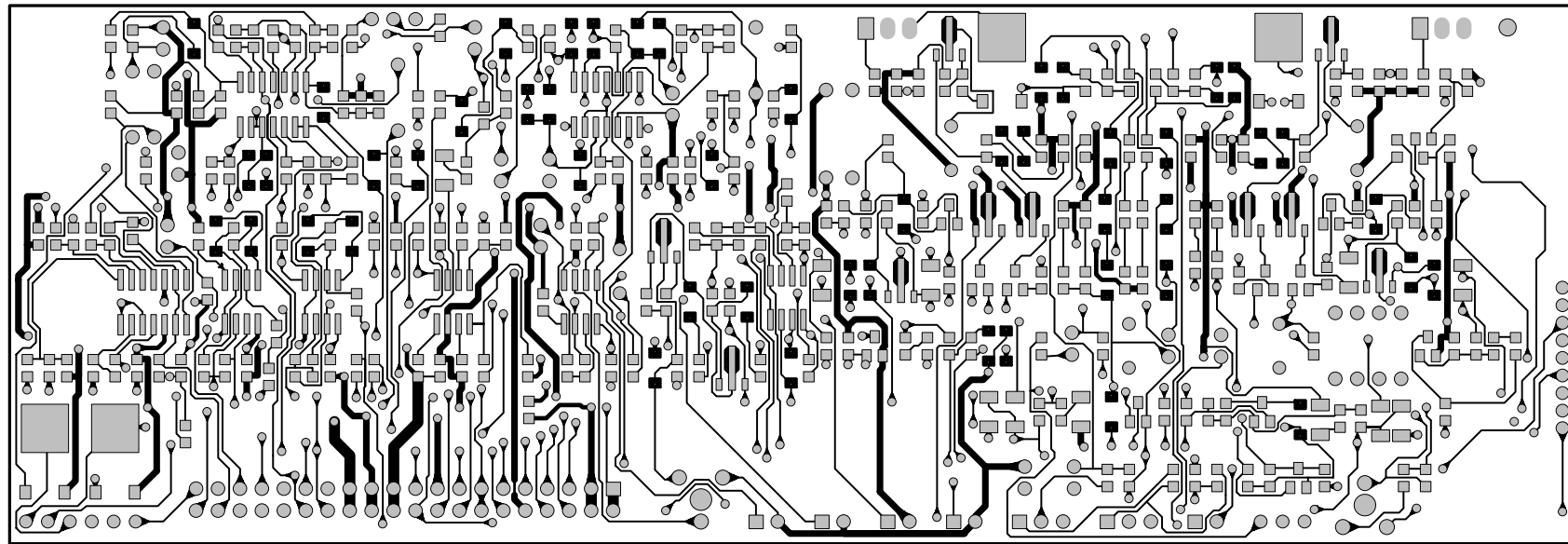
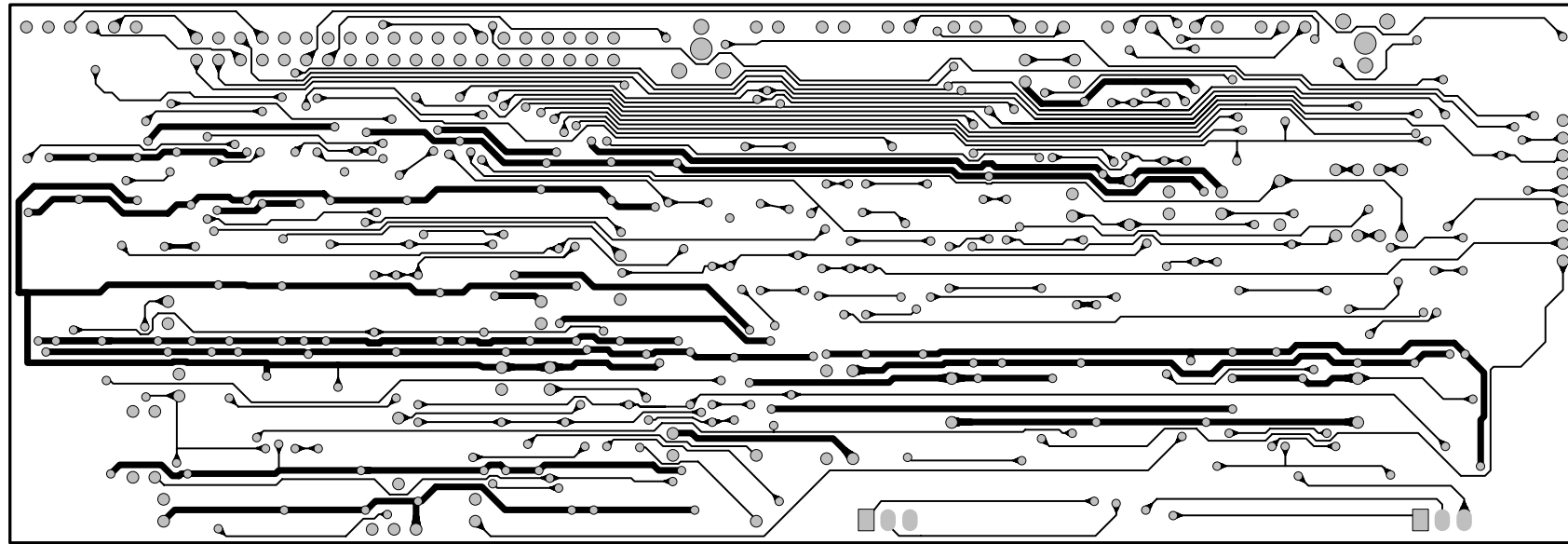
MACKIE
Mackie Designs Inc. Woodinville, Wa.

M2600 VOLTAGE AMPLIFIER AND PROTECTION

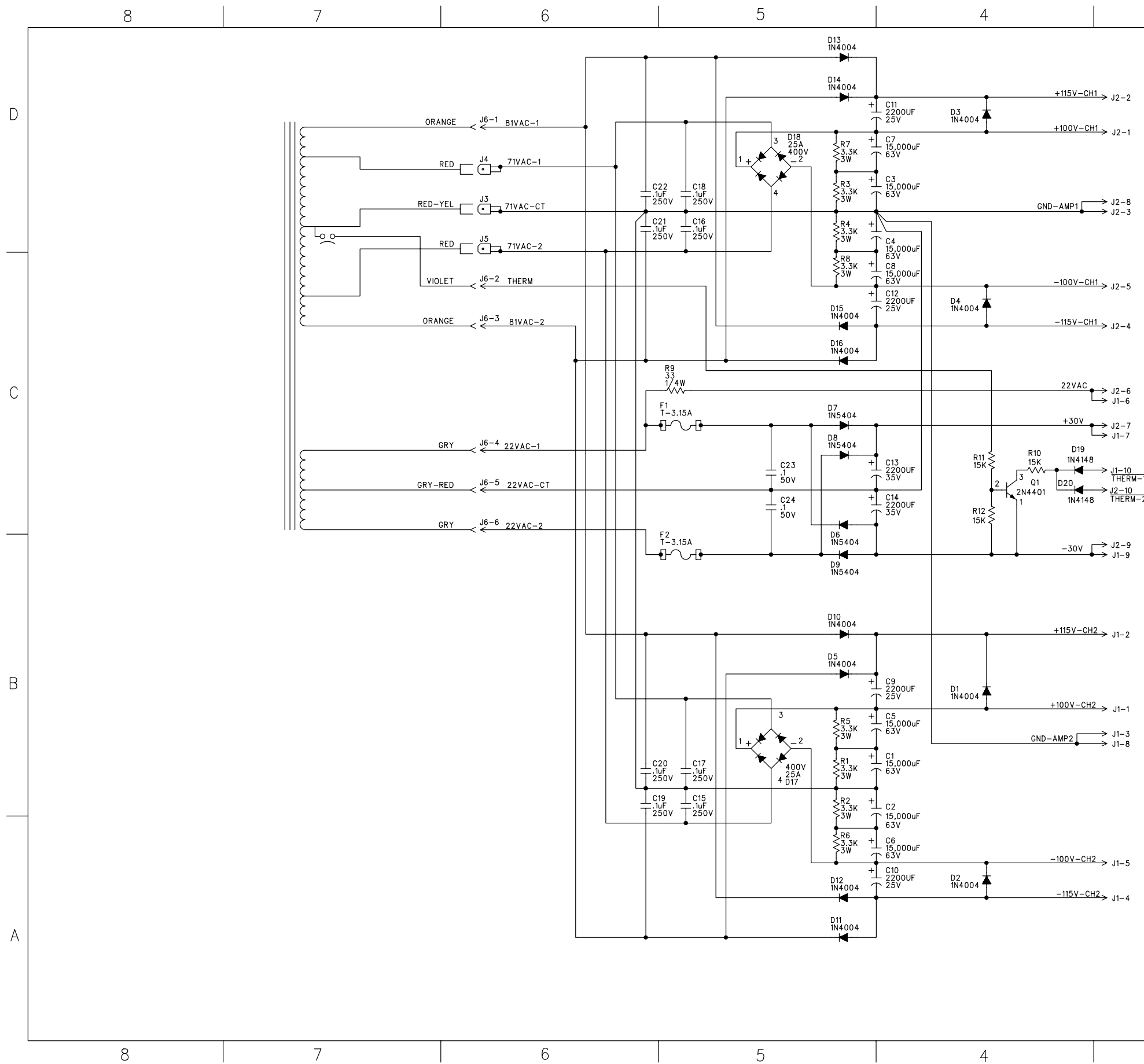
SIZE: D	SCALE: NONE	DWG. NO. 990-170-00	REV. A
DWG FILE: 170LAST.SCH		SHEET 1 OF 2	



UNLESS OTHERWISE SPECIFIED DIMENSIONS ARE IN INCHES TOLERANCES ARE: FRACTIONS: DECIMALS: ANGLES: ±NA .XX ±.01 ±NA .XXX ±.005	APPROVALS	DATE	<p>Mackie Designs Inc. Woodinville, Wa.</p>
	DRAWN: Cameron Jones	1-1-98	
MATERIAL: SEE NOTES	NP ENG:		<p>M2600 VOLTAGE AMPLIFIER AND PROTECTION</p>
	MATERIAL:		
FINISH: SEE NOTES	MFG:		<p>SIZE SCALE: DWG. NO. 990-170-00 REV. A</p>
	MFG ENG:		
DO NOT SCALE DRAWING	ISSUED:		<p>SIZE SCALE: NONE DWG. NO. 990-170-00 REV. A</p> <p>DWG FILE: 170LAST.SCH SHEET 2 OF 2</p>



DWG. NO.	990-171-00	SHT	1	REV.	A
ECO#	REV.	DESCRIPTION	REV. BY:	APP. BY:	DATE
	A	RELEASE TO PRODUCTION	TH		9-21-98



NOTE:
 ALL MAIN FILTER CAPACITOR VALUES SHOWN ARE FOR 60Hz UNITS (15,000uF / 63V)
 50Hz UNITS USE 18,000uF / 63V PARTS (MACKIE PART # 220-042-00)

- 450-171-00 PCB, M2600, POWER SUPPLY
- 400-060-00 FUSE CLIP PCMT 5MM DIA

UNLESS OTHERWISE SPECIFIED DIMENSIONS ARE IN INCHES TOLERANCES ARE: FRACTIONS: DECIMALS: ANGLES: ±NA .XX ±.01 ±NA .XXX ±.005	APPROVALS	DATE
	DRAWN: Cameron Jones	1-1-98
	CHECKED:	
	NP ENG:	
MATERIAL:	MATERIAL:	
FINISH:	MFG:	
DO NOT SCALE DRAWING	MFG ENG:	
	ISSUED:	

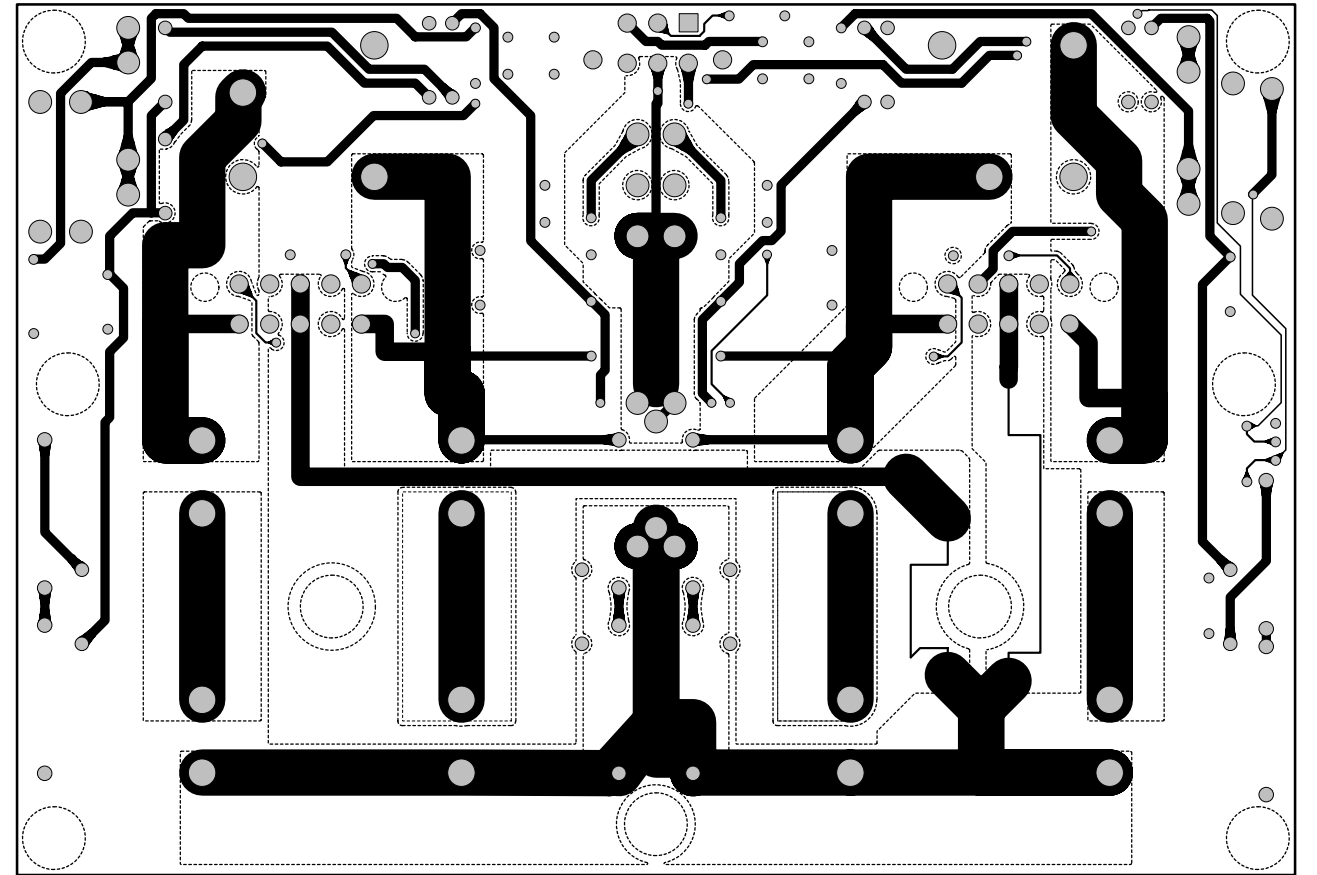
MACKIE
 Mackie Designs Inc. Woodinville, Wa.

M2600 POWER SUPPLY

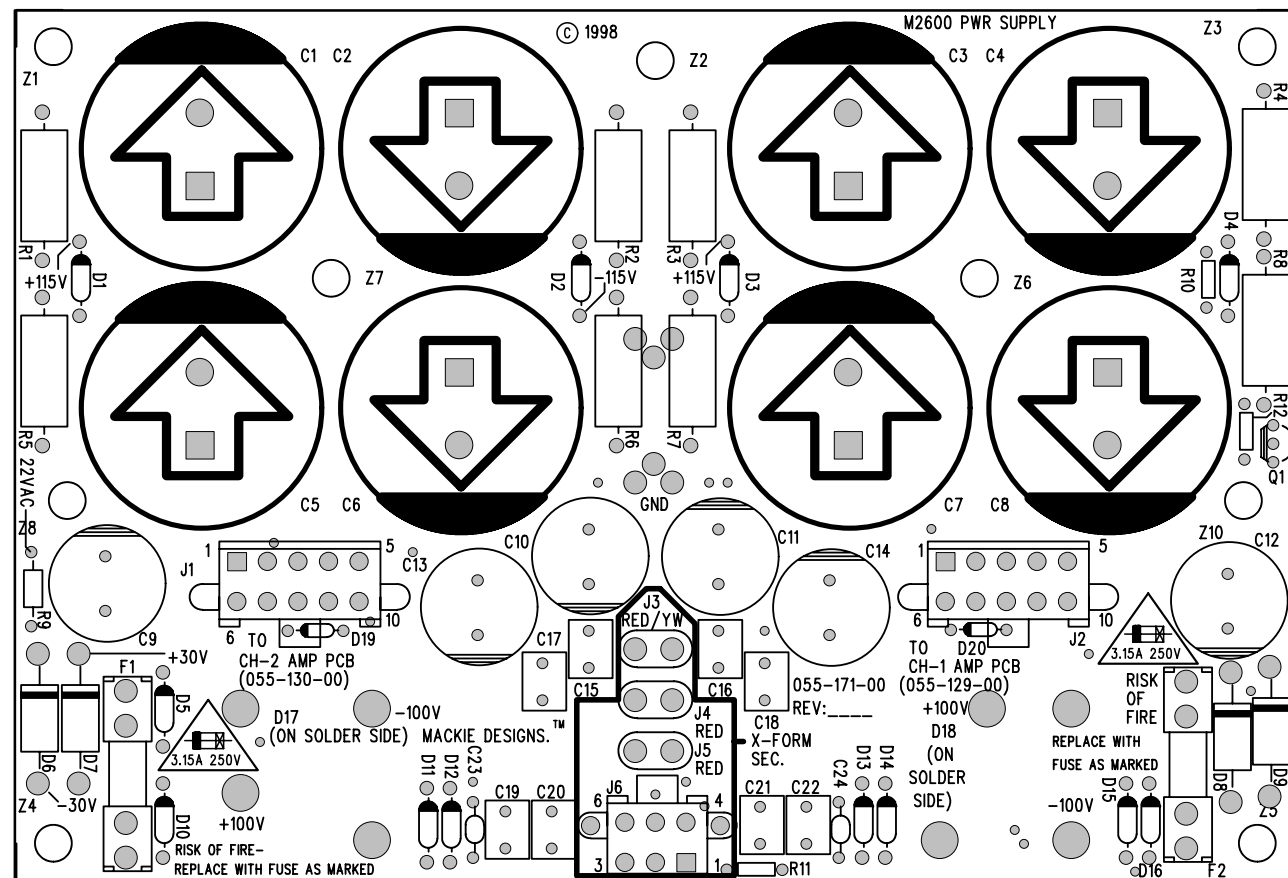
SIZE	SCALE:	DWG. NO.	REV.
D	NONE	990-171-00	A
DWG. FILE:		SHEET 1 OF 1	

Bottom traces

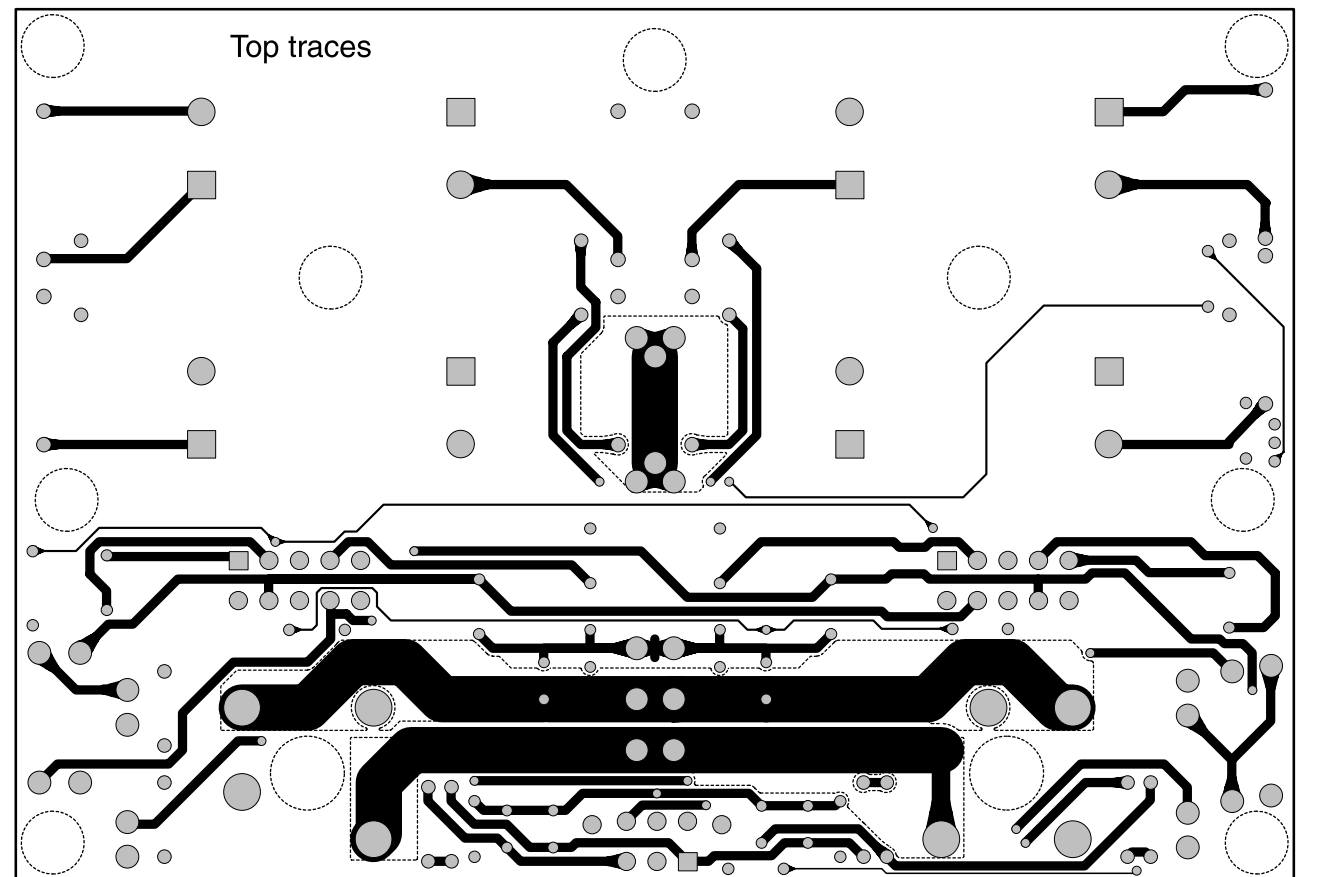
(dotted lines represent the copper pour boundaries)



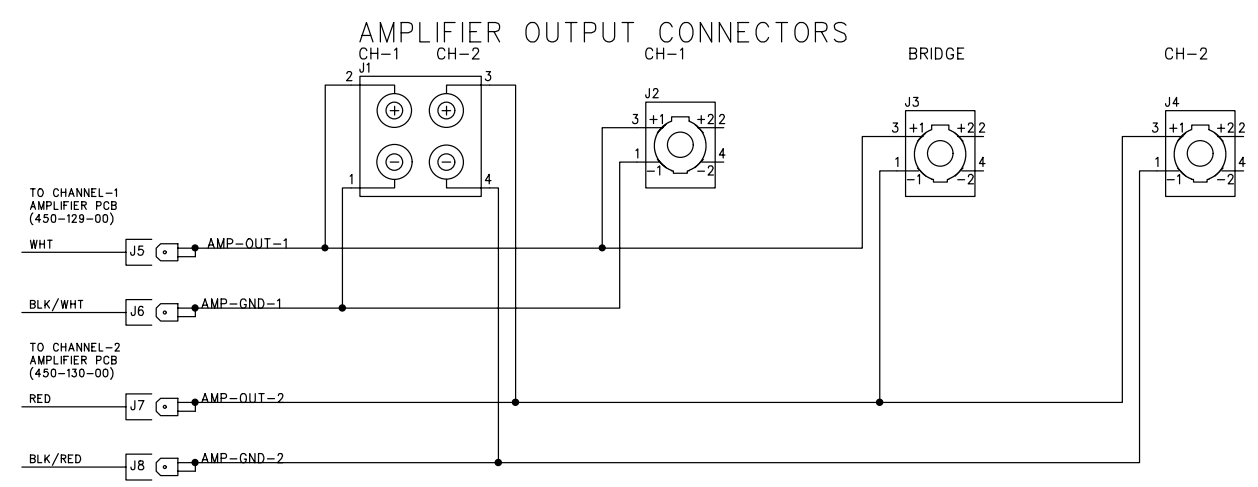
THESE MUST ALSO BE GLUED ON THE UNDERSIDE TO PCB.



Top traces



DWG. NO.	990-172-00	SHT	1	REV:	A	1
ECO#	REV:	DESCRIPTION	REV. BY:	APP. BY:	DATE	
A		RELEASE TO PRODUCTION	TH		9-22-98	

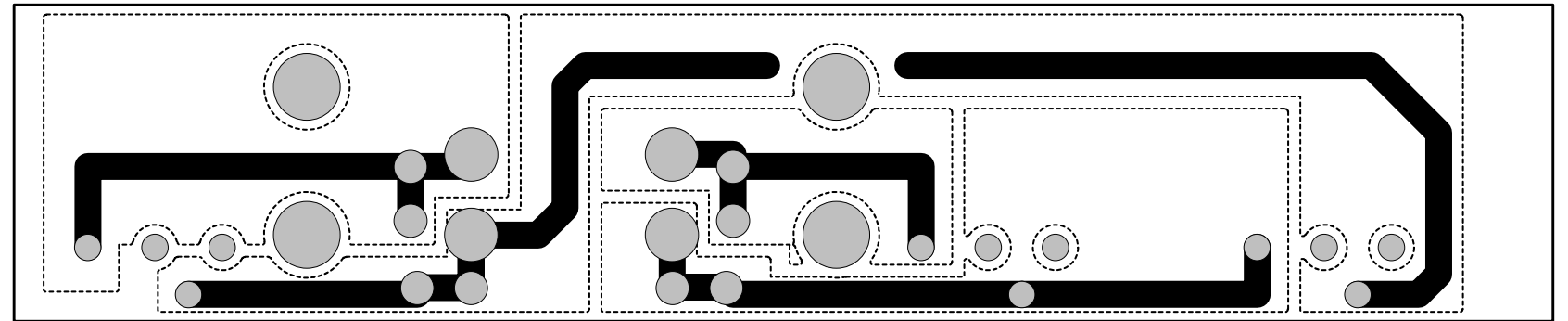


□ 450-172-00
PCB, M2600, OUTPUT

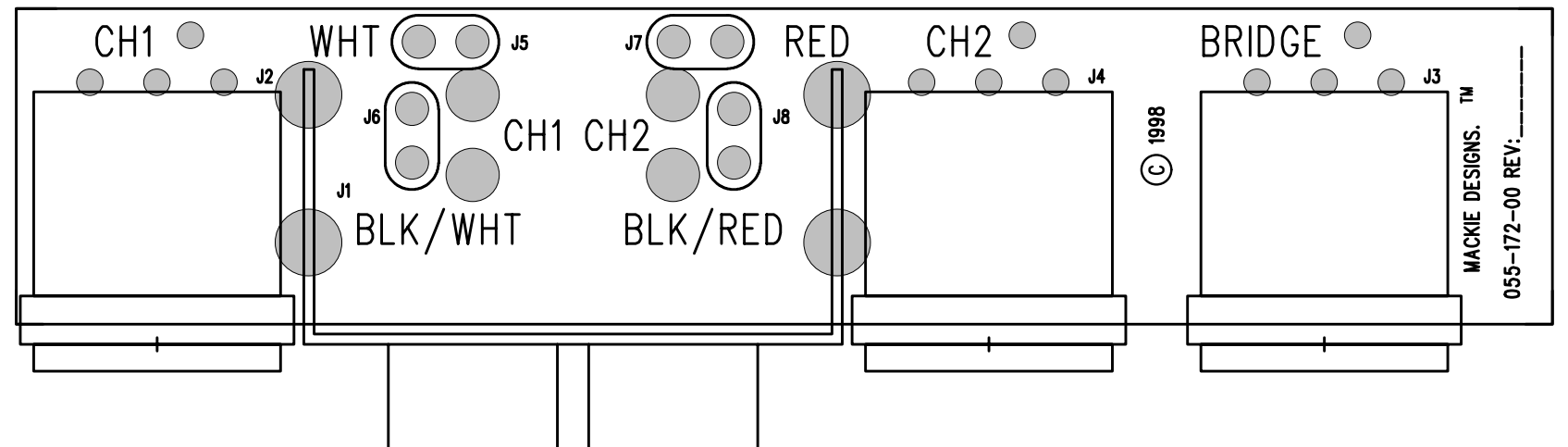
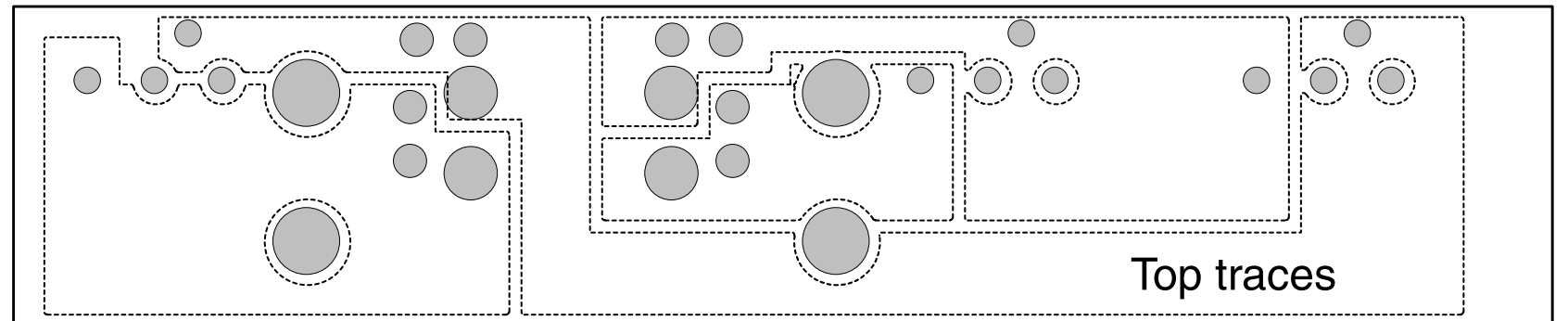
UNLESS OTHERWISE SPECIFIED DIMENSIONS ARE IN INCHES TOLERANCES ARE: FRACTIONS: DECIMALS: ANGLES: ±NA .XX ±.01 ±NA .XXX ±.005	APPROVALS	DATE	 Mackie Designs Inc. Woodinville, Wa. M2600 SPEAKER OUTPUTS
	DRAWN: Cameron Jones	1-1-98	
	CHECKED:		
	NP ENG:		
MATERIAL: SEE NOTES	MATERIAL:		SIZE SCALE: DWG. NO. REV. D NONE 990-172-00 A
FINISH: SEE NOTES	MFG:		
DO NOT SCALE DRAWING	MFG ENG:		
	ISSUED:		DWG FILE: SHEET 1 OF 1

(dotted lines represent the copper pour boundary)

Bottom traces

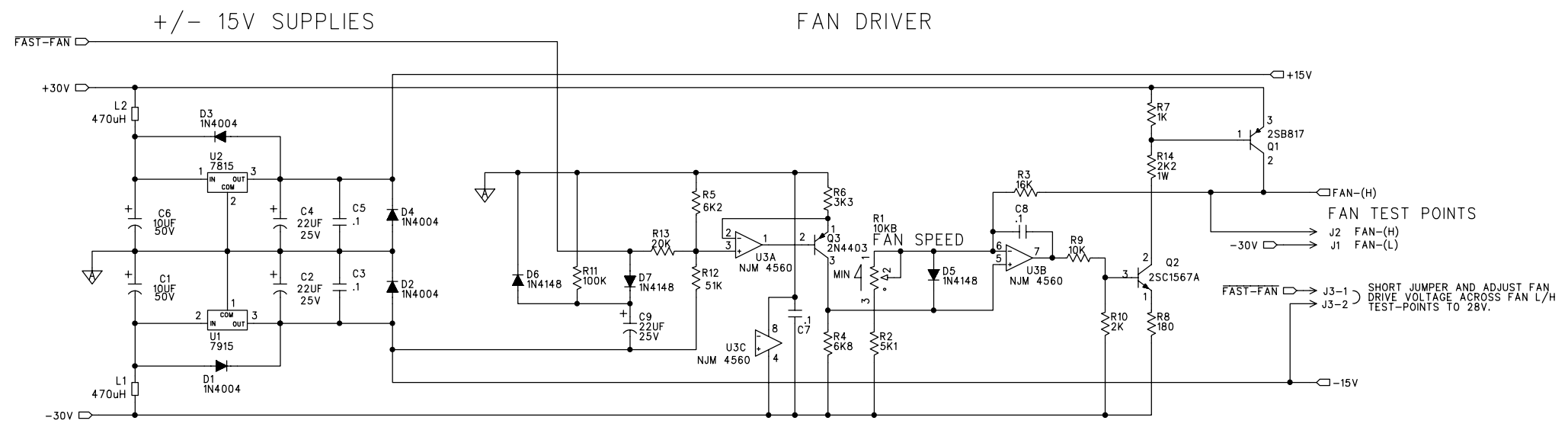


Top traces

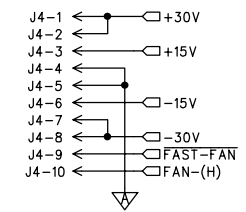


DWG. NO.	990-186-00	SHT	1	REV.	A	1
----------	------------	-----	---	------	---	---

ECO#	REV.	DESCRIPTION	REV. BY:	APP. BY:	DATE
A		RELEASE TO PRODUCTION	TH		9-21-98



TO CH-1 AMPLIFIER PCB
(055-129-00)



- 712-021-01 RIVET
- 550-369-00 BRACKET, L
- 450-186-00 PCB, M2600, +/-15V SUPPLY & FAN DRIVE

UNLESS OTHERWISE SPECIFIED DIMENSIONS ARE IN INCHES. TOLERANCES ARE: FRACTIONS: DECIMALS: ANGLES: ±.NA .XX ±.01 ±NA .XXX ±.005	APPROVALS	DATE	MACKIE Mackie Designs Inc. Woodinville, Wa.
	DRAWN: Cameron Jones	1-1-98	
	CHECKED:		
	NP ENG:		
MATERIAL: SEE NOTES	MATERIAL:		M2600 +/-15V SUPPLY / FAN DRIVE
FINISH: SEE NOTES	MFG:		
DO NOT SCALE DRAWING	MFG ENG:		SIZE: D
	ISSUED:		SCALE: NONE
			DWG. NO. 990-186-00
			REV. A
			DWG FILE:
			SHEET 1 OF 1

