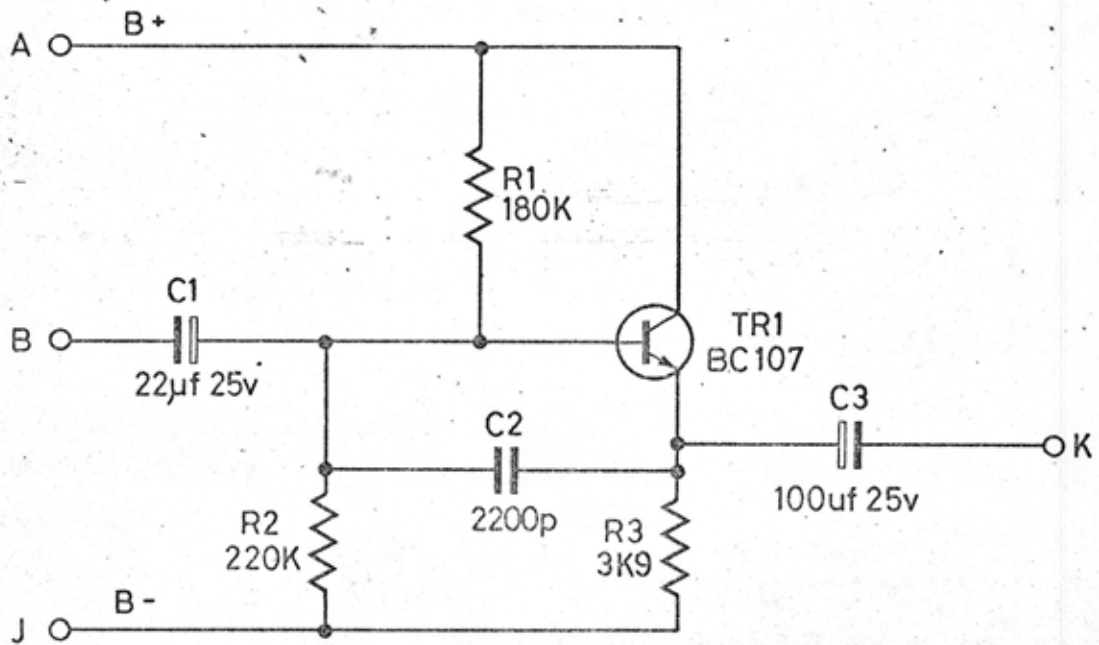




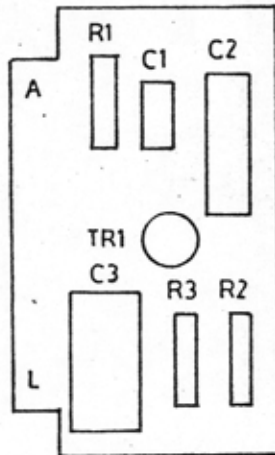
Rupert Neve & Company Ltd. own the copyright of this drawing which is not to be copied reproduced or disclosed, in part or whole, to a third party without written permission.



2	ISSUE	FIRST USED ON	MATL.	TOL. UNLESS OTHERWISE STATED			
	10.12.74.	DATE	DRN.	FINISH	LINEAR ±	ANGULAR	HOLES +0.05 -0.000
11074	CHANGE NOTE NO	TRACED C.K.	TITLE	3RD ANGLE PRJ.	DIMS IN	SCALE	
	CHECKED	CHECKED	B106 EMITTER FOLLOWER.	DRG. NO	D/10,007		
	CHECKED	Rupert Neve & Company Ltd.			1974	©	A4

PRINTED CIRCUIT BOARD ASSEMBLY BA106B

COMPONENT LAYOUT



PARTS LIST

<i>Ref</i>	<i>Description</i>	<i>Part No.</i>
R1	180K TR5 5%	R5 180K
R2	220K " "	R5 220K
R3	1K2 " "	R5 1K2
C1	22 μ F, 25V	C0300
C2	2200 pF	C0003
C3	100 μ F, 25V	C0298
TR1	BC107	T0042
	Printed Circuit Board Assembly	BA106