

CUBE 15

SERVICE NOTES *Issued by RJA*

TABLE OF CONTENTS

SPECIFICATIONS.....	2	EXPLODED VIEW(CHASSIS).....	6
LOCATION OF CONTROLS	3	EXPLODED VIEW PARTS LIST(CHASSIS).....	7
LOCATION OF CONTROLS PARTS LIST	3	PARTS LIST.....	8
EXPLODED VIEW(CABINET).....	4	CAUTIONS FOR THE REPLACEMENT OF	
EXPLODED VIEW PARTS LIST(CABINET)	5	DAMAGED POWER SUPPLY CORD.....	10



Copyright © 2002 ROLAND CORPORATION

All rights reserved. No part of this publication may be reproduced in any form without the written permission of ROLAND CORPORATION.

SPECIFICATIONS

CUBE-15 GUITAR AMPLIFIER SPECIFICATIONS

Rated Power Output

15W

Nominal Input Level (1kHz)

INPUT (CLEAN Channel) -10dBu/1Mohms
AUX IN -10dBu

Speaker

20cm (8inch) x1

Controls

CLEAN Channel
VOLUME Knob
LEAD Channel
TYPE Switch (OVERDRIVE, DISTORTION, METAL, METAL STACK)
GAIN Knob
VOLUME Knob
EQUALIZER
BASS Knob
MIDDLE Knob
TREBLE Knob

SELECT Switch
POWER Switch

Indicators

CLEAN Channel
LEAD Channel

Connectors

INPUT Jack (1/4" phone type)
AUX IN Jack (Stereo 1/4" phone type)
RECORDING OUT/HEADPHONE Jack (Stereo 1/4" phone type)

Power Supply

AC117V, 230V or 240V

Power Consumption

18W

Dimension

335 (W)x240 (D) x330 (H) mm
13"-3/16 (W) x9"-1/2 (D) x13" (H) inches

Weights

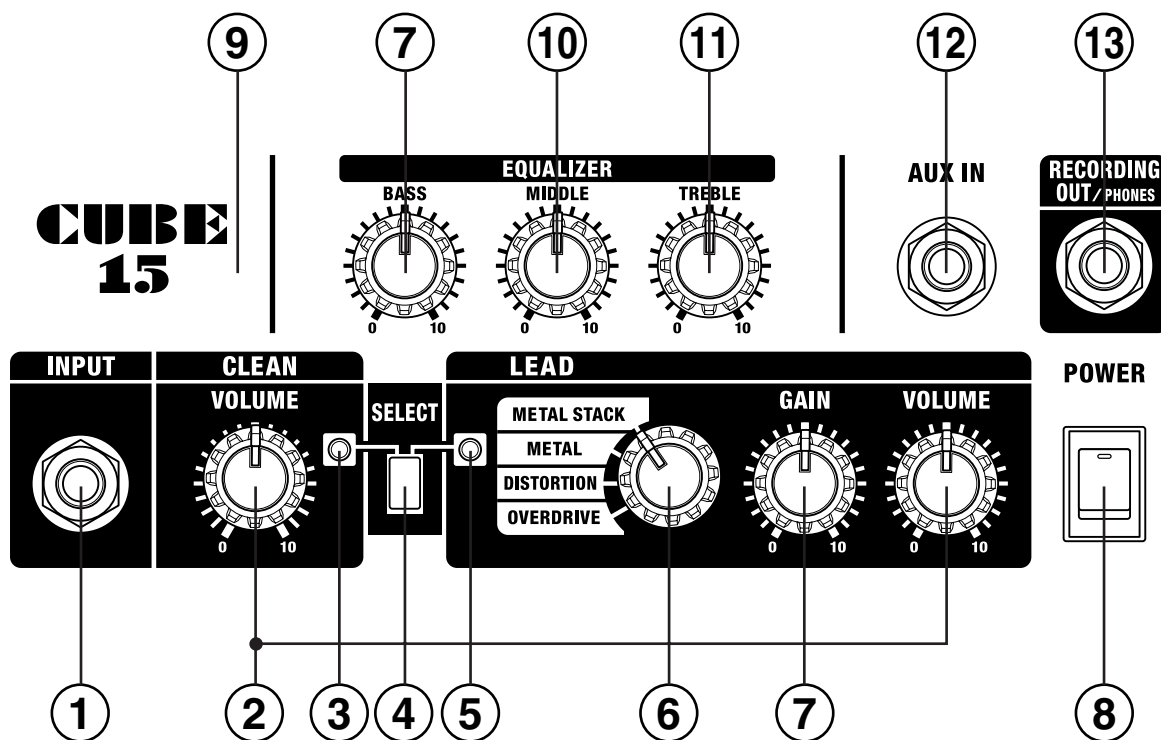
6.9kg/15lbs 4oz

Accessories

Owner's Manual English(#SD000006)
Japanese(#SD000005)

* 0dBu = 0.775Vrms

LOCATION OF CONTROLS



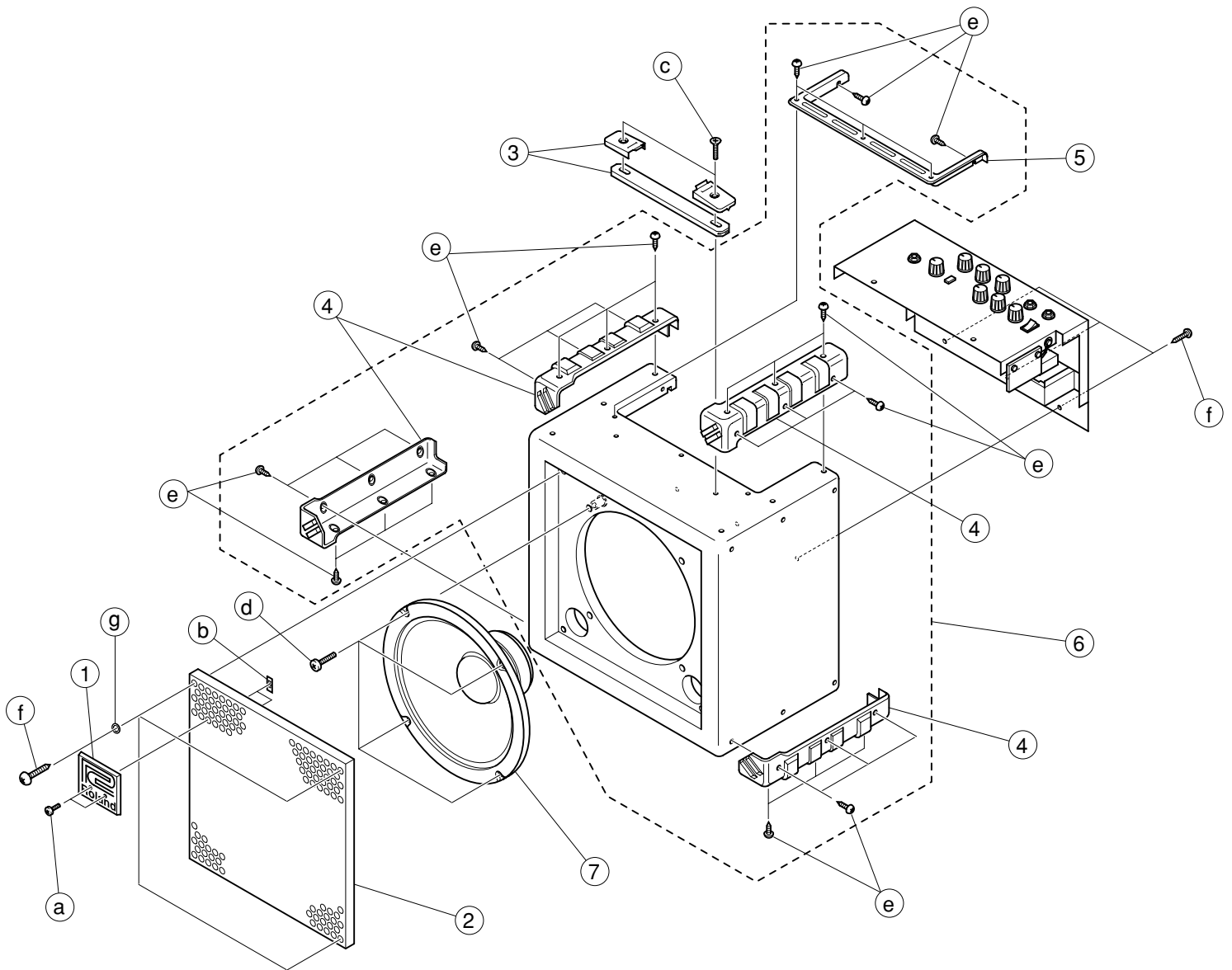
LOCATION OF CONTROLS PARTS LIST

all JACK NUT : SD000042 JACK NUT

all KNOB : SD000043 KNOB

No	Part Code	Part Name	Description	Q'ty
1	13449146	6.5MM JACK	YKB21-5012 (W/SW)	1
2	SD000055	9MM ROTARY	RK09L1120 10KB	2
3	SD000044	LED GREEN		1
4	SD000059	PUSH SWITCH	SPUP128100	1
4	2249752100	PUSH BUTTON	BLACK #521	1
5	SD000045	LED RED		1
6	SD000060	ROTARY SWITCH	SRBM14	1
7	SD000057	9MM ROTARY	RK09L1120 250KA	2
8	02897801	SEESAW SWITCH	SDDJE13200 94V-0	1
9	SD000025	CHASSIS		1
10	SD000056	9MM ROTARY	RK09L1120 20KB	1
11	SD000054	9MM ROTARY	RK09L1120 100KB	1
12	13449145	6.5MM JACK	YKB21-5010	1
13	13449252	6.5MM JACK	YKB21-5006 (STEREO W/SW)	1

EXPLODED VIEW(CABINET)



NOTE

Don't keep a speaker cable from contact a Heatsink and a primary power supply unit when equipping with a chassis.

EXPLODED VIEW PARTS LIST(CABINET)

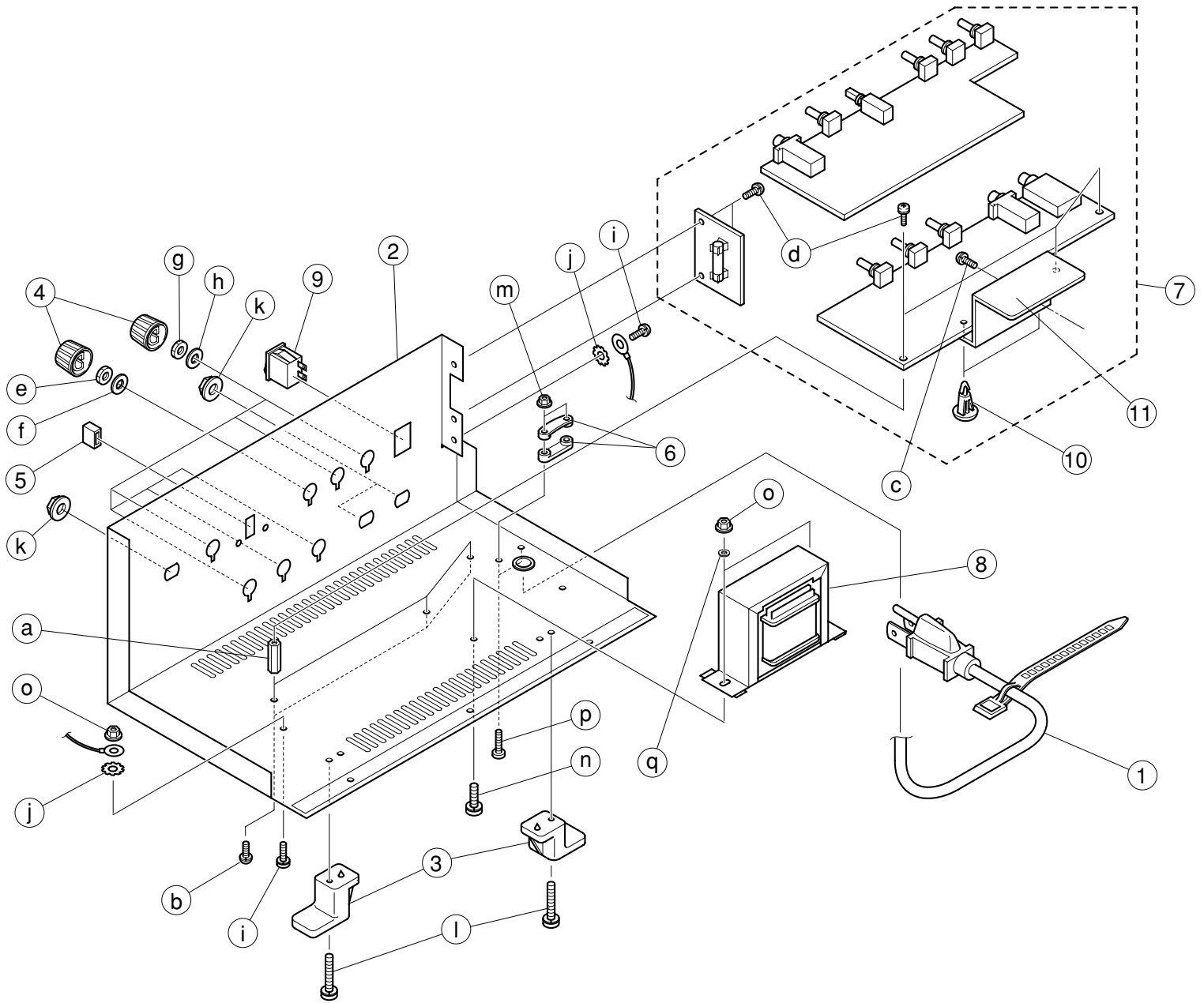
[PART]

No	Part Code	Part Name	Description	Q'ty
1	SD000017	BADGE		1
2	SD000021	GRILL		1
3	SD000035	HANDLE WITH ESCUTHEON		1
4	SD000031	CORNER PROTECTOR		4
5	SD000027	TRIM		1
6	SD000024	CABINET ASSY		1
		CABINET ASSY include the following parts.		
		SD000031 CORNER PROTECTOR		
		SD000027 TRIM		
7	SD000032	SPEAKER 364509		1

[SCREW]

No	Part Code	Part Name	Description	Q'ty
a	SD000047	SCREW 3X8	OVALHEAD MACHINE BZC	2
b	40011689	SPEED NUT M3	F-TYPE	2
c	SD000048	SCREW 5X35	OVALHEAD MACHINE BZC	2
d	SD000019	SCREW 4X25	BINDING MACHINE BZC	4
e	SD000067	SCREW 3X12	TRUSS TAPTITE A1 BZC	29
f	SD000068	SCREW 4X25	TRUSS TAPTITE A1 BZC	7
g	SD000069	WASHER M4 11FAI	ADDITIONAL PLASTIC WASHER	4

EXPLODED VIEW(CHASSIS)



EXPLODED VIEW PARTS LIST(CHASSIS)

[PART]

No.	Part Code	Part Name	Description	Q'ty
1	SD000015	AC CORD	SP-502B 240V	1
1	SD000014	AC CORD	SP-301 117V	1
1	SD000016	AC CORD	SP-60 230VE	1
1	SD000012	AC CORD	SP-023 230V	1
2	SD000025	CHASSIS		1
3	22360705	AC CORD HOOK		2
4	SD000043	KNOB		7
5	2249752100	BUTTON		1
6	12369410RT	AC CORD HOLDER	1702B	2
7	SD000002	PCB ASSY*	100/117V	1
8	SD000063	TRANSFORMER	ST-11543 100V/117V	1
8	SD000062	TRANSFORMER	ST-11542 230V/240V	1
9	02897801	SEESAW SWITCH	SDDJE13200 94V-0	1
10	SD000053	PCB SPACER	SCC-6 94V-0	3
11	SD000026	HEATSINK		1

* d SCREW M3X6 is not included in PCB ASSY.

[SCREW]

No.	Part Code	Part Name	Description	Q'ty
a	22150518	STANDOFF	HEX.BOSS 5.5X15 M3	3
b	40012945	SCREW M3X6	PAN MACHINE W/SW+PW BZC	3
c	40012878	SCREW M3X10	PAN MACHINE W/SW+PW ZC	1
d	40017934	SCREW M3X6	PAN MACHINE W/SW+PW FE ZC	5
e	40128923	HEX NUT M7		1
f	17048651	VR ACCESSORY WASHER M7		1
g	17048630	VR ACCESSORY NUT M9		6
h	17048631	VR ACCESSORY WASHER M9		6
i	SD000052	SCREW 4X8	PAN MACHINE BZC	2
j	40011889	EXTERNAL TOOTH WASHER M4	FECM	2
k	SD000042	JACK NUT		3
l	40345534	SCREW M4X25	PAN MACHINE W/SW+PW BZC	2
m	40011756	FLANGE HEX NUT M3	ZC	2
n	SD000018	SCREW 4X12	BINDING MACHINE BZC	2
o	40011767	FRANGE HEX NUT M4	FE CM	3
p	40010301	SCREW M3X20	BINDING MACHINE BZC	2
q	40347534	M4 SPRING WASHER	BZC	2

PARTS LIST

SAFETY PRECAUTIONS:

The parts marked Δ have safety-related characteristics. Use only listed parts for replacement.

CONSIDERATION ON PARTS ORDRING

When ordering any parts listed in the parts list, please specify the following items in the order sheet.

	QTY	PART NUMBER	DESCRIPTION	MODEL NUMBER
Ex.	10	22575241	Sharp Key	C-20/50
	15	2247017300	Knob (orange)	DAC-15D

Failure to completely fill the above items with correct number and description will result in delayed or even undelivered replacement.

NOTE: The parts marked # are new. (initial parts)



NOTE
Safety Precautions

The method of replacing the damaged power supply cord vary with serial numbers.
Please refer to followings.

- Up to serial No.ZP90419(100V),ZQ00619(117V,230V,240V)
Replace power supply cord and PS-1 BOARD when replacing the damaged power supply cord.
Do not replace only power supply cord due to preventing the damage of the traces of the PS-1 BOARD by heating of the soldering iron.

NOTE: Use only the power supply cord and PS-1 BOARD served by Roland Service Center Japan.

Please order the components to Roland Service Center Japan.

PCB ASSY (P/No.SD000002) includes the PS-1 BOARD.

- From serial No.ZQ00620(100V),ZQ00620(117V,230V,240V)
Please replace only the damaged power supply cord according to "Cautions for the replacement of damaged power supply cord."

CASING					Q'ty
#	SD000017	BADGE			1
#	SD000021	GRILL			1
#	SD000035	HANDLE WITH ESCUTHEON			1
#	SD000024	CABINET ASSY			1
NOTE:CABINET ASSY includes the following parts.					
#	SD000031	CORNER PROTECTOR			4
#	SD000027	TRIM			1
CHASSIS					
#	22360705	AC CORD HOOK			2
#	SD000025	CHASSIS			1
KNOB,BUTTON					
#	2249752100	PUSH BUTTON	BLACK #521		1
#	SD000043	KNOB			7
SWITCH					
Δ	02897801	SDDJE13200 94V-0	SEESAW SWITCH	SW1	1
#	SD000060	SRBM14	ROTARY SWITCH	SW3 on PB	1
#	SD000059	SPUP128100	PUSH SWITCH	SW2 on PB	1
JACK,EXT TERMINAL					
	13449252	YKB21-5006 (STEREO W/SW)	6.5MM JACK	JK2 on MB	1
	13449145	YKB21-5010	6.5MM JACK	JK3 on MB	1
	13449146	YKB21-5012 (W/SW)	6.5MM JACK	JK1 on MB	1
SPEAKER,BUZZER					
#	Δ SD000032	364509	SPEAKER		1
PWB ASSY					
#	SD000002	PCB ASSY	100/117V		1
NOTES:PCB ASSY include the following parts.					
#	SD000026	HEATSINK			1
#	Δ SD000053	PCB SPACER	SCC-6 94V-0	HEATSINK	3
	*****	PS-1 BOARD			1
PCB ASSY 100/117V is exclusively for 100/117V use. For 230/240V, make the following modifications to this "Low Voltage PWB". 1.Replace fuse to specific one. 2.Write the mark in the specification voltage(230/240V) table of PCB ASSY. See Table A.					

PWB ASSY

Table A

100 / 117V	SB 500mA 250V	→	100 / 117V	CB 500mA 250V
230 / 240V	T 250mAAL 250V		230 / 240V	T 250mAAL 250V

DIODE

#	SD000044	LED GREEN		LED1 on PB	1
#	SD000045	LED RED		LED2 on PB	1

POTENTIOMETER

#	SD000054	RK09L1120 100KB	9MM ROTARY	VR6 on MB	1
#	SD000055	RK09L1120 10KB	9MM ROTARY	VR 1,VR3 on MB	2
#	SD000056	RK09L1120 20KB	9MM ROTARY	VR5 on MB	1
#	SD000057	RK09L1120 250KA	9MM ROTARY	VR2,VR4 on MB	2

FUSE,FUSE HOLDER

#	△	SD000007	5ST 250MA/250V	FUSE	F1 on PS1B	1
---	---	----------	----------------	------	------------	---

TRANSFORMER

#	△	SD000062	ST-11542 230V/240V	TRANSFORMER		1
#	△	SD000063	ST-11543 100V/117V	TRANSFORMER		1

AC CORD ASSY (Installed)

#	△	SD000012	SP-023 230V	AC CORD		1
#	△	SD000014	SP-301 117V	AC CORD		1
#	△	SD000015	SP-502B 240V	AC CORD		1
#	△	SD000016	SP-60 230VE	AC CORD		1

SCREWS

#		40011756	FLANGE HEX NUT M3	ZC	AC CORD BUSH	2
#		SD000067	SCREW 3X12	TRUSS TAPTITE A1 BZC	CORNER PROTECTOR	29
#		SD000068	SCREW 4X25	TRUSS TAPTITE A1 BZC	GRILL, CHASSIS	7
		40012878	SCREW M3X10	PAN MACHINE W/SW+PW ZC	POWER IC	1
		40017934	SCREW M3X6	PAN MACHINE W/SW+PW FE ZC	PCB	5
		40012945	SCREW M3X6	PAN MACHINE W/SW+PW BZC	STAND OFF NUT	3
		40345534	SCREW M4X25	PAN MACHINE W/SW+PW BZC	AC CORD HOOK	2
#		SD000052	SCREW 4X8	PAN MACHINE BZC	AC CORD GND,WIRING GND	2
#		SD000047	SCREW 3X8	OVALHEAD MACHINE BZC	BADGE	2
#		SD000048	SCREW 5X35	OVALHEAD MACHINE BZC	HANDLE	2
		22150518	STANDOFF	HEX.BOSS 5.5X15 M3	PCB	3
		40011889	EXTERNAL TOOTH WASHER M4	FECM	AC CORD GND,WIRING GND	2
		40011767	FRANGE HEX NUT M4	FE CM	TRANSFORMER PCB WIRING	3
		40011689	SPEED NUT M3	F-TYPE	BADGE	2
		40010189	SCREW 3X8	BINDING ZC	AC CORD BUSH	2
#		SD000018	SCREW 4X12	BINDING MACHINE BZC	TRANSFORMER	2
#		SD000019	SCREW 4X25	BINDING MACHINE BZC	SPEAKER	4
		40128923	HEX NUT M7		ROTARY SW	1
#		SD000042	JACK NUT		JACK	3
		17048630	VR ACCESSORY NUT M9		VR	6
		17048651	VR ACCESSORY WASHER M7		ROTARY SW	1
		17048631	VR ACCESSORY WASHER M9		VR	6
		SD000069	WASHER M4 11FAI	ADDITIONAL PLASTIC WASHER	GRILL	4
		40347534	M4 SPRING WASHER	BZC	TRANSFORMER	2
		40010301	SCREW M3X20	BINDING MACHINE BZC		2

PACKING

#		SD000046	MIRAMIT SHEET			1
#		SD000022	PACKING BAG			1
#		SD000023	PACKING CASE			1
#		SD000051	PACKING INNER			4

MISCELLANEOUS

#	△	SD000053	PCB SPACER	SCC-6 94V-0	HEATSINK	3
#	△	SD000058	ADHESIVE	SC608LVZ	Wring for primary power transformer and PS1 BOARD.	
	△	12369410RT	AC CORD HOLDER	1702B	AC CORD	2
#		SD000029	CABLE TIE			7
#		SD000026	HEATSINK			1

ACCESSORIES (Standard)

#		SD000005	OWNER'S MANUAL	JAPANESE		1
#		SD000006	OWNER'S MANUAL	ENGLISH		1

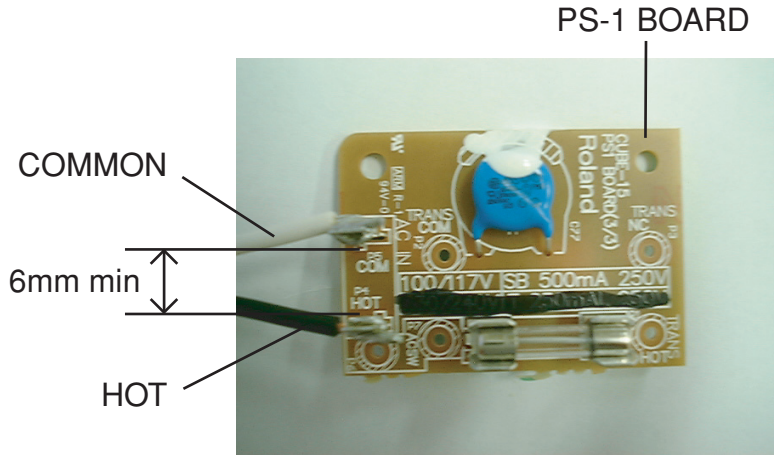
CAUTIONS FOR THE REPLACEMENT OF DAMAGED POWER SUPPLY CORD

Please refer to the following "Notes" and confirm the Serial number when you replace the power supply cord.

Notes

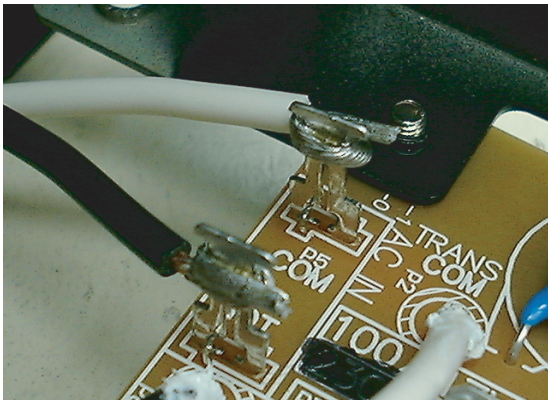
100V	ZP90420--
117V,230V,230VE,240VA	ZQ00620--

1. The distance between terminal (included the part of winding the wire) is more than 6mm (refer to Fig.1) .



POWER SUPPLY CORD	WIRING COLOR	
	HOT	COMMON
117V	BLACK	WHITE
230V	BROWN	BLUE
230VE	BROWN	BLUE
240V	BROWN	BLUE

2. Please wind the wire around the terminal 1.5 times before soldering wire to terminal.(refer to FIG.2)



3. When you remove the power supply cord from PS-1 BOARD, the dregs of a wire should not remain on a terminal.

