

TB-303 SERVICE NOTES

First Edition

SPECIFICATIONS

PATTERN MEMORY CAPACITY
 64: 8 (PATTERN) x 2 (PATT. SECTION) x 4 (PATT. GROUP I, II, III, IV)
 Contents: Pitch, Value, Accent, Slide
MINIMUM STEP

STEPS/measure

→ 1 to 16 steps (2, 3 or 4 meter)
 → 1 to 15 steps (2, 3, 4 or 5 meter)
 Scale

3 octaves (PATTERN) w/TRANPOSE
 4 octaves (TRACK) w/Key shift

TRACK MEMORY CAPACITY
 64 measures/TRACK Total 256 measures (64 x 7 TRACKS)
 Contents: Pattern Order, TRANPOSE, D.C. #
TUNING Control: approx. ±700 cents (perfect fifth)
TEMPO Control: $\text{♩} = 40$ to 300

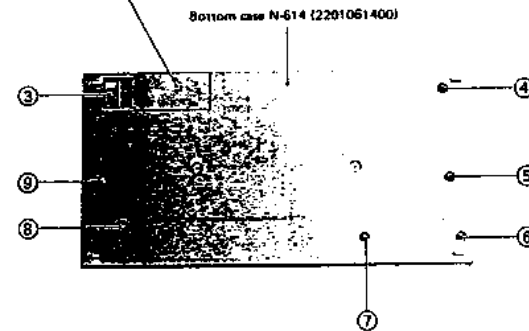
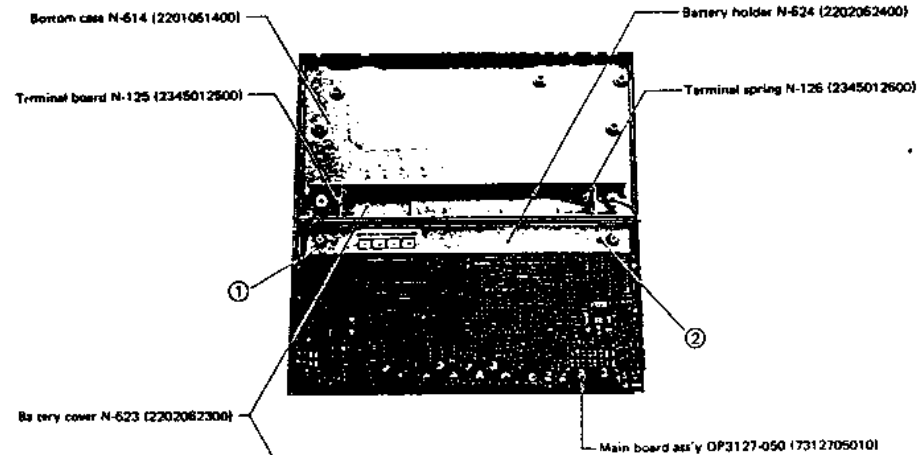
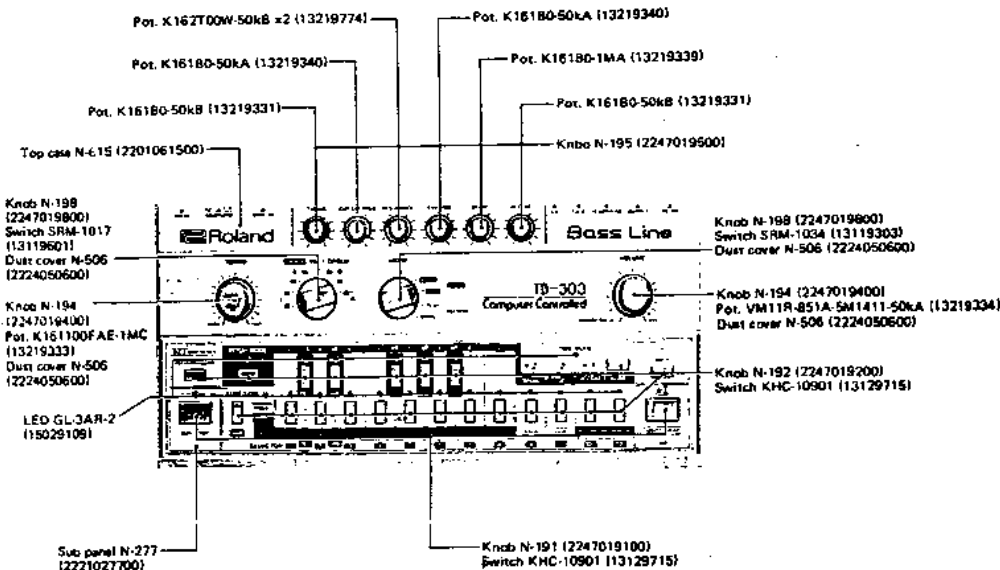
CONNECTIONS

Output: Impedance 10kΩ
 Headphone: Impedance 8Ω to 30Ω
 Gate Out: OFF: 0V; ON: +12V
 CV Out: +1V to +5V (1 volt/oct)
 SYNC In: DIN connector
 MIX In: Impedance 100kΩ
 Gain: Unity

POWER

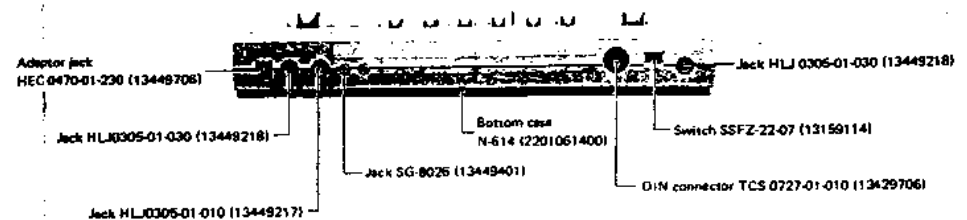
6V: 1.5V battery x 4
 9V: AC adaptor
 80mA to 120mA
 Dimensions: 300(W) x 146(D) x 55(H) mm
 Weight: 1.0 kg

READ "PRELIMINARY DIAGNOSIS" ON PAGE 7 BEFORE STARTING TROUBLESHOOTING

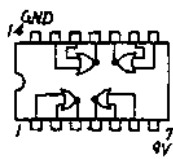


SCREWS ①-④ 3 x 10mm B₁, Fe, Cr, Binding, Self tapping
 SCREWS ⑤-⑨ 3 x 18mm B₁, Fe, Ni, Binding, Self tapping

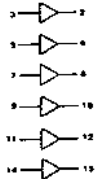
BOTTOM CASE REMOVAL SCREWS: ③-⑨



MC14001B CP
Quad 2-Input NOR Gate

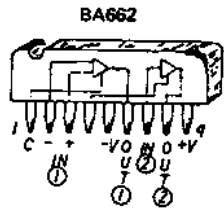
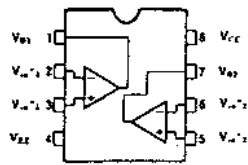


MC14050B
HEX BUFFERS

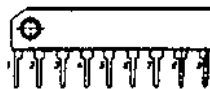
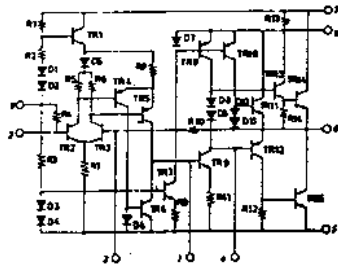


MC = Pin 12, 16
Vcc = Pin 8
Vcc = Pin 1

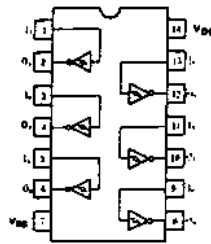
AN6562



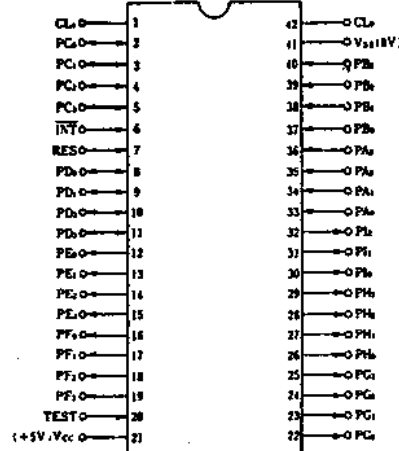
LA4140



HD14584B
Hex Schmitt Trigger



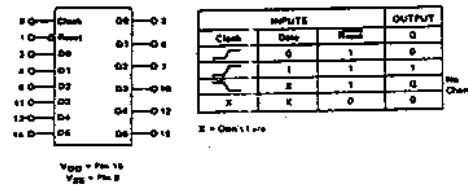
μPD650C
(Top View)



μPD650C-085 FUNCTIONAL DESCRIPTION

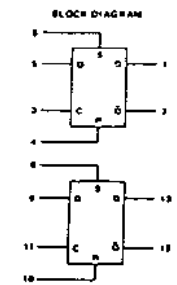
No.	No.	
PH (Part H)	0, 1, 2, 3	Scanning signal outputs to switches Switching signal outputs to STATUS BUFFER & GATE
PA (Part A)	1, 2, 3	Switch scanning signal inputs STATUS (TEMPO CLOCK, START/STOP, TAP) inputs
PB (Part B)	1, 2, 3	Inputs from switch board switches
PG (Part G)	1, 2, 3	Drive signals to switch board LEDs
PE (Part E)	1, 2, 3	MEMORY ADDRESS PITCH DATA
PD (Part D)	1, 2, 3	
PF (Part F)	1, 2, 3	
PC (Part C)	1, 2, 3	Data In/Out/Outputs
PI (Part I)	1, 2	Memory WE Pitch data latch strobe Gate signal

MC14174B
HEX TYPE D FLIP-FLOP



MC14013B

DUAL TYPE D FLIP-FLOP

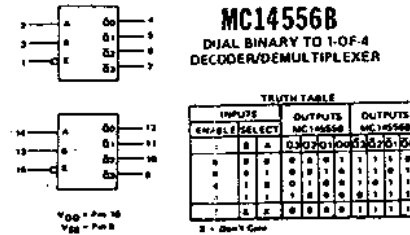


TRUTH TABLE

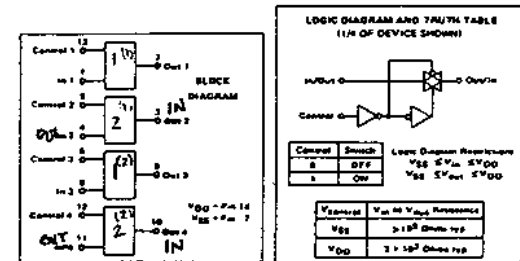
CLOCK	INPUTS			OUTPUTS	
	DATA	RESET	SET	Q	Q-bar
0	X	0	0	1	0
0	X	0	1	0	1
0	X	1	0	0	0
0	X	1	1	1	1
1	X	X	X	Q	Q-bar

MC14556B

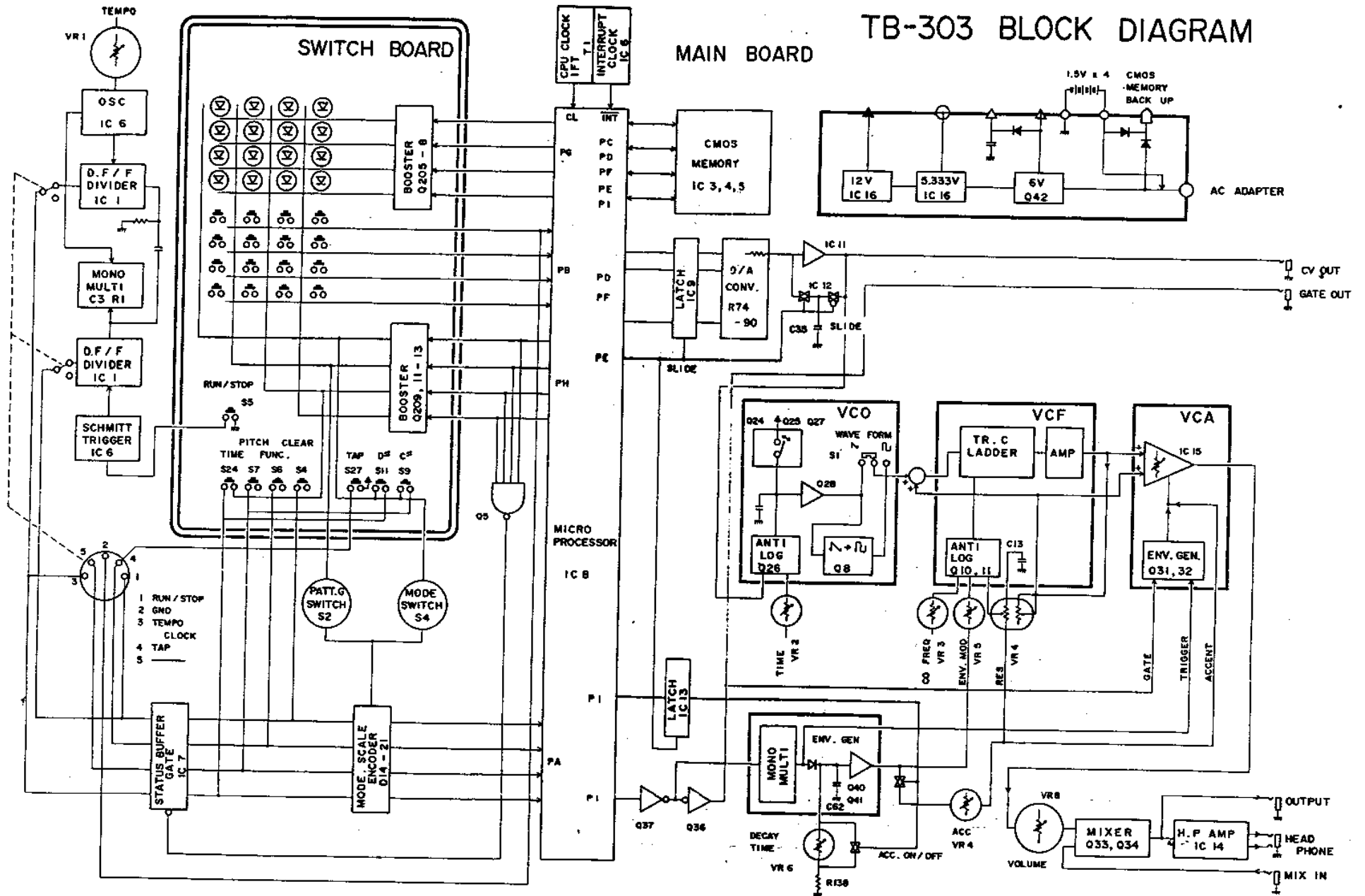
DUAL BINARY TO 1-OF-4 DECODER/DEMULTIPLEXER

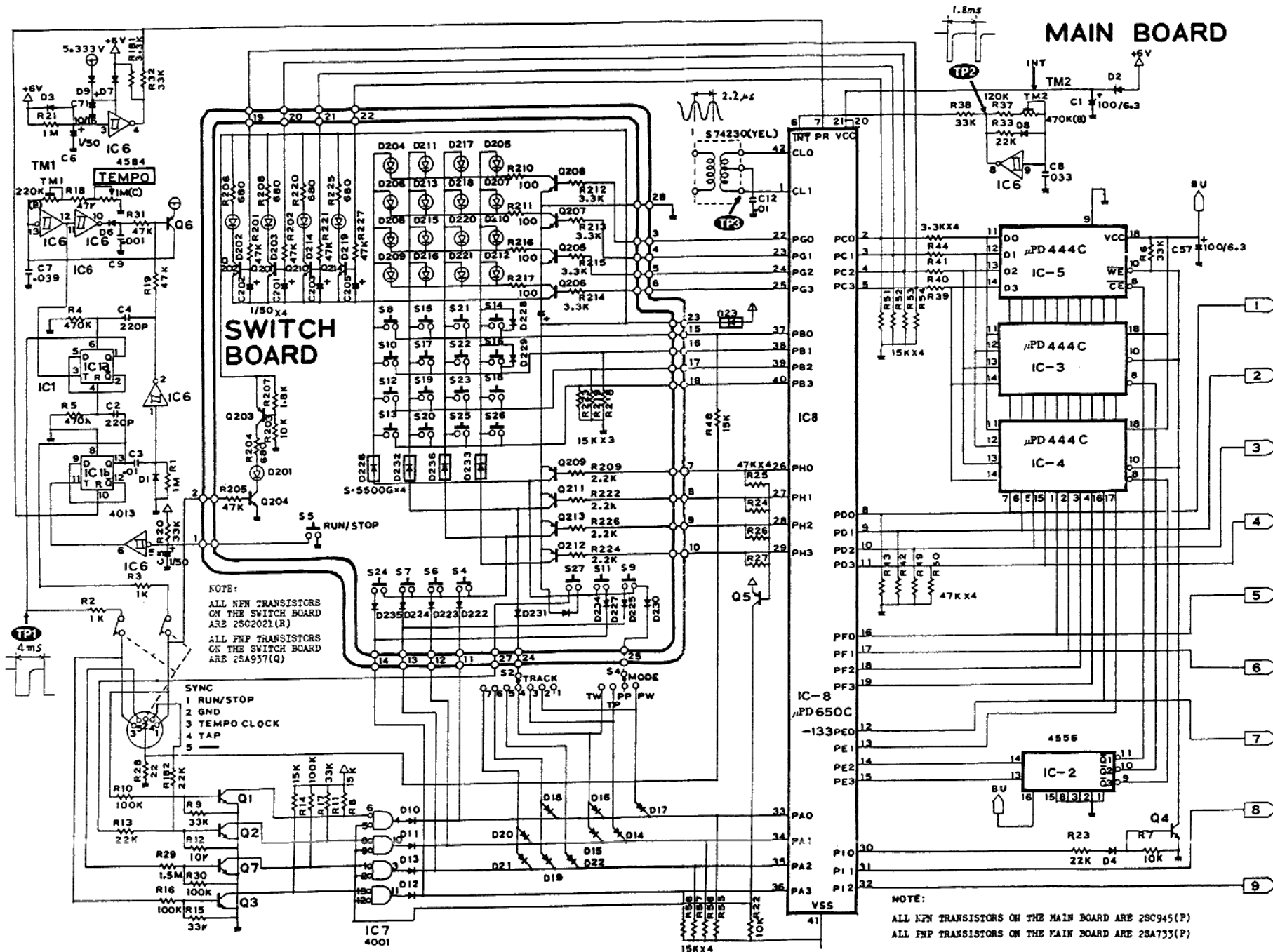


MC14066B
QUAD ANALOG SWITCH
QUAD MULTIPLEXER



TB-303 BLOCK DIAGRAM

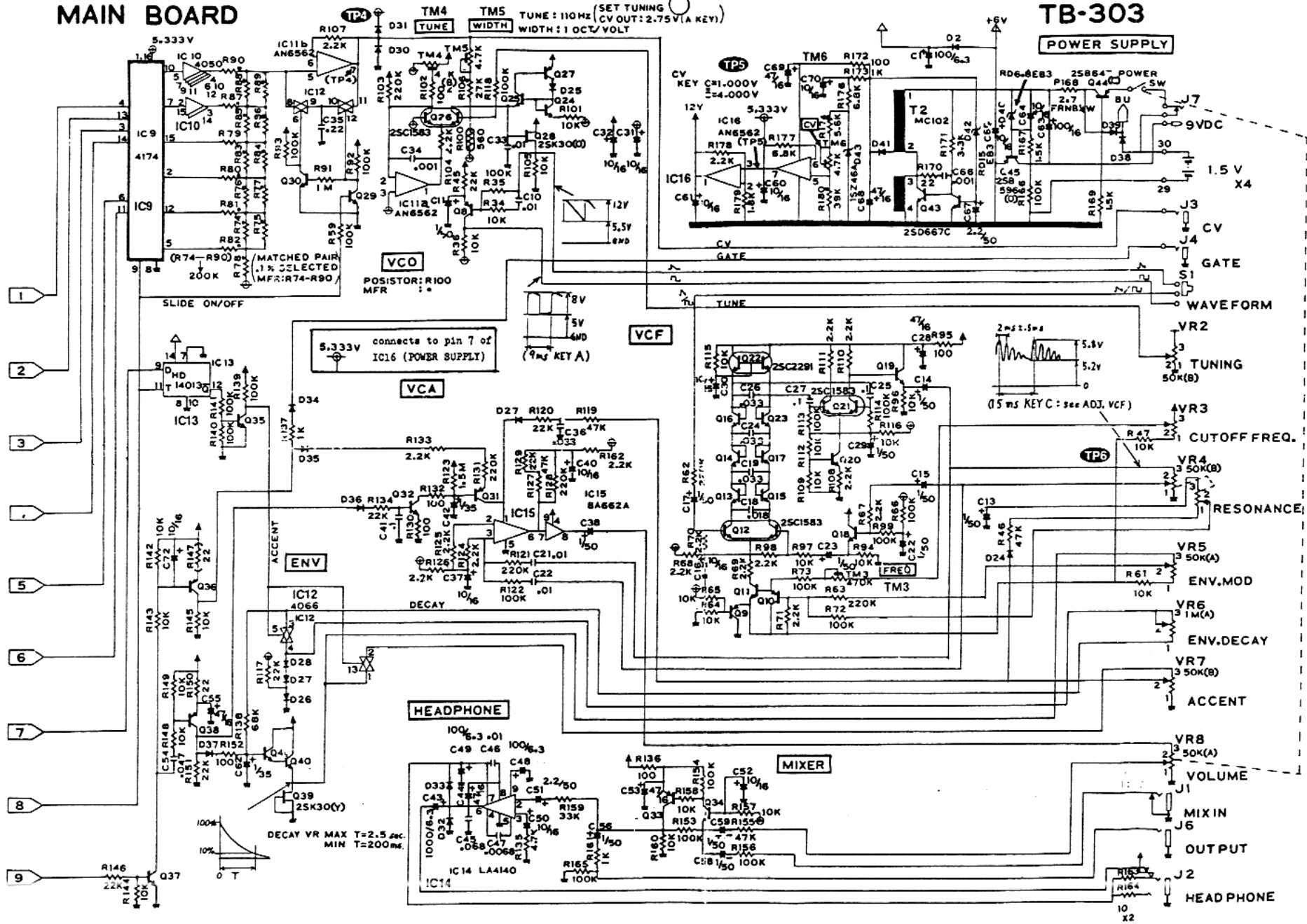




MAIN BOARD

TB-303

POWER SUPPLY

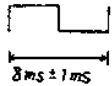


ADJUSTMENT

Adjustments should be done from the component side.
Use digital voltmeter or oscilloscope, as appropriate.

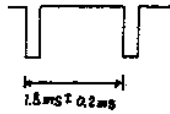
TEMPO

Check point: TP1
Turn TEMPO full clockwise.
Adjust TM1 for:



INT CLOCK

Check point: TP2
Adjust TM2 for:



CAUTION:

The following adjustments will be done in PATTERN WRITE mode.
If existing rhythm patterns need to be restored, locate a PATTERN that contains no rhythms or the easiest ones to copy and write it down.

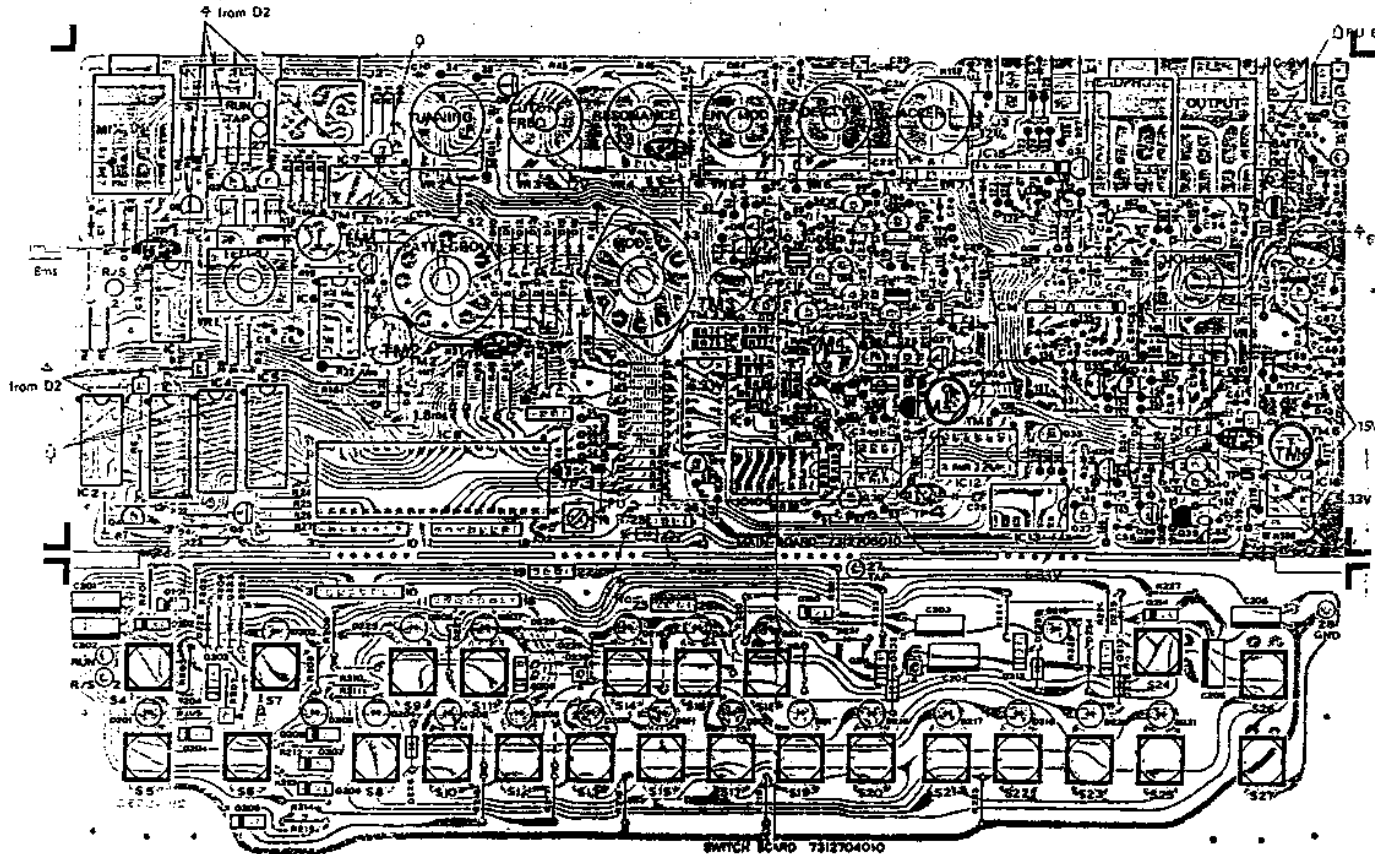
CV

Check point: CV out jack
With PITCH mode, press low C key and note the reading - CVL.
Press high C key, adjust TM6 for CVL+1.000V±3mV - CVM.
While holding down TRANSPOSE UP, press high C key, confirm that the reading is CVM+1.000±3mV.

View from component side

MAIN BOARD

OP3127-050
(7312705010)
(pcb 291-502C)

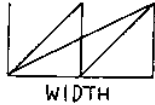


SWITCH BOARD

OP3127-040
(7312704010)
(pcb 291-503C)

VCO

Check point: Q28 source or S1 WAVEFORM terminal.
Set TUNE in its middle position.
With PITCH mode. While tapping CL and CH keys alternately, adjust TM5 WIDTH for 2:1 waveforms:

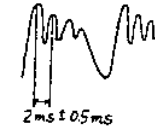


Press A key and adjust TM4 for 110Hz.
Confirm 4:1±0.5% with CL and CH + TRANSPOSE UP.

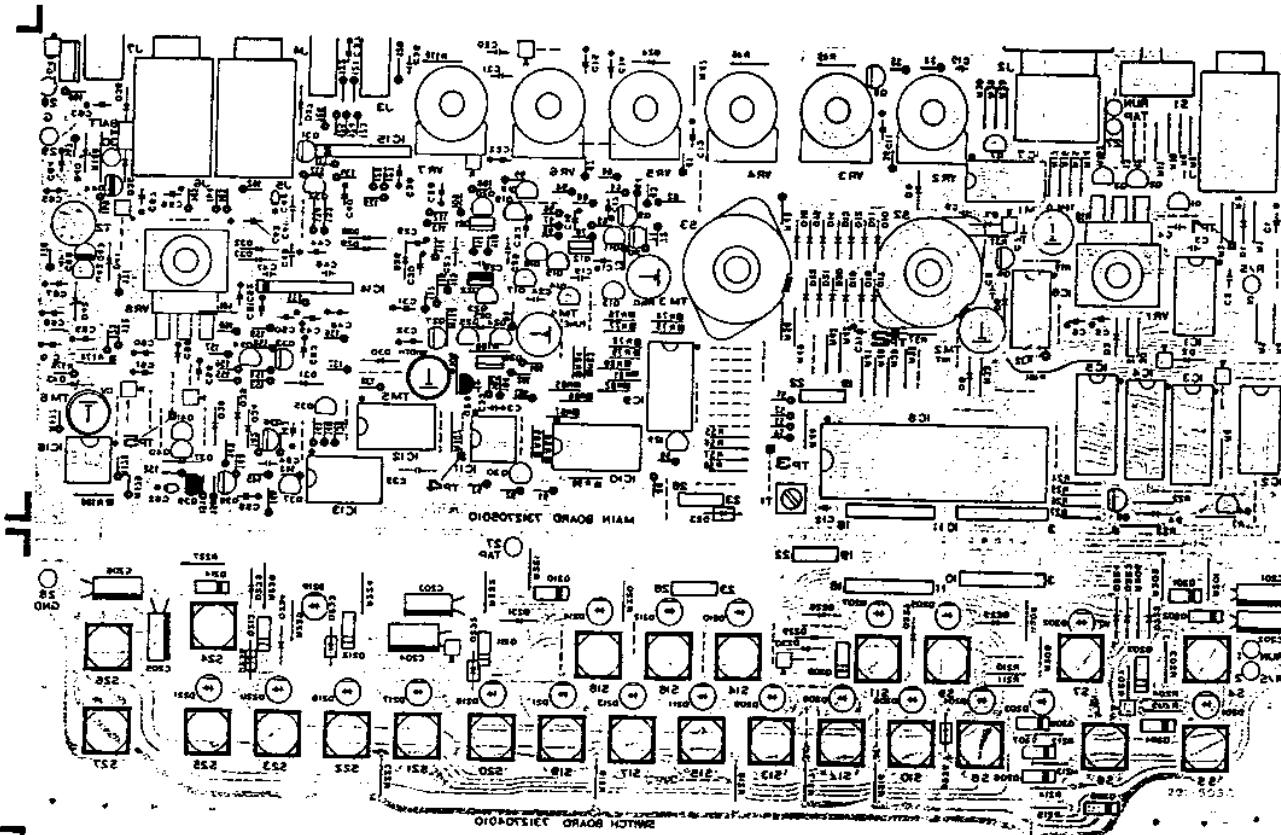
VCF

Check point: TP6
Panel settings:
CUTOFF FREQ : center
WAVEFORM : SAWTOOTH
RES : Full clockwise
ENV MOD,
DECAY, ACC : Full counterclockwise

Adjust TM3 for:



View from foil side



PRELIMINARY DIAGNOSIS



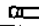

BATTERY

First check the DC voltage.
Most users are not so familiar with battery operated equipment as to suspect aged dry cells in the malfunctioning (silent) TB-303 when LEDs other than RUN/BATTERY are lit up.

MISOPERATION

The versatile TB-303 inevitably needs to be manipulated according to what is instructed in the TB-303 Owner's manual.
Symptoms listed below are likely to be found (by the user) in a unit which will be returned for servicing, as an evidence of defect.
Confirm the operation following to the steps described in the manual - on the page(s) referenced.

- Patterns (especially note value) are not reproduced as they should be.
" 4 TO WRITE YOUR OWN BASS LINE" PP. 49-64
- Incorrect PATTERN selection
"IMPORTANT NOTES" P. 3
- The LED above the selected PATTERN switch does not flush
" 2 Setting the STEP number" P. 53
"b. WRITING A BASS PATTERN IN 3/4" PP. 55-57
- TRACK fails to store data being written into it.
- Phrases do not repeat in order in TRACK PLAY mode.
"SELECTING THE TRACK" PP. 23-32
"B. TO WRITE YOUR OWN BASS LINE" PP. 64-68
- Melody does not run at the beginning of the 1st measure in TRACK PLAY mode.
" 4 LET'S PLAY THE TRACK" PP. 31-32

	2SC536P
	2SA733P
	2SC2021R
	2SA937Q

VCF ENVELOPE MODULATION

In the conventional VCF configuration, envelope modulation voltages applied to modulation control voltage input of VCF rise from a fixed potential to their values regardless of shape and amount of envelope and fall back to the same potential. Fig. 1. In this setup, an attempt to deepen envelope modulation is increment of control voltage in one direction, only to open up filter. Resultants are; higher the control voltage input, longer the period of time cutoff point travels through higher frequency range in which significant aural sound characteristic changes do not occur, whereas notes are brightened.

To compensate for the limitation this impose, there is a gimmick in the TB-303 VCF circuit. The Q9 has a key role in this arrangement. See Fig. 2. It develops bias for Q10 and Q11 to set initial cutoff point at the center of frequency range. Within the range even a small amount of voltage change can create a appreciable modulation.



Fig. 1

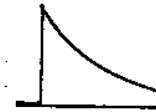
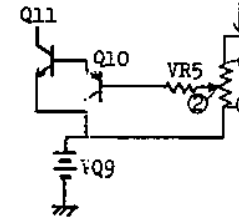


Fig. 2



Fig. 3



Rotating wiper ② of VR5 closer to terminal ③ increases ENV MOD voltage being fed to base of Q10 while changing the bias which in turn lowers VCF cutoff frequency. See Fig. 3. This is equal to turning CUTOFF knob counterclockwise and, since Q10 and Q11 in combination convert control voltage to the current in anti-log fashion, the cutoff point stays in an effective frequency range for the most portion of envelope sweeping duration.

PARTS LIST

PANEL

2201061500	Top case	N615	top
2201061400	Bottom case	N-614	bottom
2202062300	Battery cover	N-623	
2202062400	Battery holder	N-624	
2221027700	Sub panel	N-277	

SOCKET

13429706	DIN connector	TCS0737-01-010	Sync
13448218	Jack	HLJ0305-01-030	MONO
13449217	Jack	HLJ0305-01-010	STEREO
13449401	Jack	SG8026	MINI
13449706	Adaptor jack	HEC0470-01-230	AC adaptor

TRANSFORMER COIL

12449217	IFT coil	S74230 (yellow)	CPU clock
12449507		MC102C	DC-DC converter

SWITCH

13119601	SRM1017	rotary	TRACK, INSTRUMENT
13119303	SRM1034	rotary	MODE
13129715	KHC10901	push	All switches on the switch board
13159114	SSF2-22-07	slide	SYNC in/out

SEMICONDUCTOR

LSI			
15179128	μPCD650C-133	CMOS CPU	
15179305	μPD444C	CMOS RAM	
IC			
15159101H0	HD14001BP	Quad 2-input NOR gate	
15159105	HD14013BP or MN4013B	Dual type D flip-flop	
15129128	HD14050BP	Hex buffers	

15159115	HD14066BP	Quad analog switch
		Quad multiplexer
15159133	HD14174BP	Hex type D flip-flop
15159308	HD14566BP	Dual binary to 1-of-4 Decoder/Demultiplexer
15189138	AN6562	Dual op amp
15229802	BA962(A)	Vari-conductance amp
15159303H0	HD14584B	Hex Schmitt trigger
15199509	LA4140	AF Power amp

TRANSISTOR

15119105	2SA733(P)	
15119602	2S8647(C)	
15119806	2S8596(O)	
15129602	2SD667(C)	
15129121	2SC2021(R)	
15129130	2SC1583(F)	Dual Tr
15129131	2SC2291(F)	Dual Tr

FET

15139101	2SK30TM(Y)	
15139102	2SK30TM(O)	

LED

15029109	GL3AR2	
----------	--------	--

DIODE

15019120	1S2473	Si diode
15019209	S-5500G	
15019122	1S-188FM	Ge diode
15019655	RD6.8EB-3 or 15019656	RD6.8EB2-T
15019653	RD15EB-3	
15019128	1S-133	Si diode
15019630	1S8-46A	

POTENTIOMETER

13219333	K161100FAE-1MC	tempo
13219334	VM11R851A-5M1411-50KA	master vol. & power switch
13219331	K161B0-50KB	TUNING, ACCENT
13219340	K161B0-50kA	CUT OFF FREQ, ENV MOD
13219339	K161B0-1MA	DECAY
13219774	K162T00W-50k8 x 2	RESONANCE
13299116	H1051A016-47kB	trimmer
13299118	H1051A021-220kB	trimmer
13299122	H1051A023-470kB	trimmer
13299543	H1021A011-4.7kB	trimmer

RESISTOR

12559708	FRN8 2.7Ω	Fuse resistor
----------	-----------	---------------

CIRCUIT BOARD ASSEMBLY

7312705010	MAIN BOARD	OP3127-050	(PCB 291 502C)
7312704010	SWITCH BOARD	OP3127-040	(PCB 291 503C)

KNOB

2247019400	Knob	N-194	master VR & TEMPO
2247019500	Knob	N-195	instrument level
2247019100	Knob	N-191	RUN/STOP, TAP
2247019200	Knob	N-192	step number
2247019800	Knob	N-198	rotary switch

OTHERS

1299503	PCB Holder	LCBS-12NS	
2219028700	Holder	N-287	Potentiometer for master vol. & tempo
2343097600	Flat cable		8-core
2343097700	Flat cable		4-core
2345012500	Terminal board		Battery + side
2345012600	Terminal spring		Battery - side
2224011500	Dust cover	N-115	slide switch
2224050600	Dust cover	N-506	master vol., tempo, rotary switch

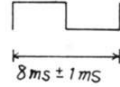
TB-303

ADJUSTMENT

Adjustments should be done from the component side.
Use digital voltmeter or oscilloscope, as appropriate.

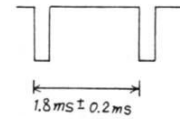
TEMPO

Check point: TP1
Turn TEMPO full clockwise.
Adjust TM1 for:



INT CLOCK

Check point: TP2
Adjust TM2 for:

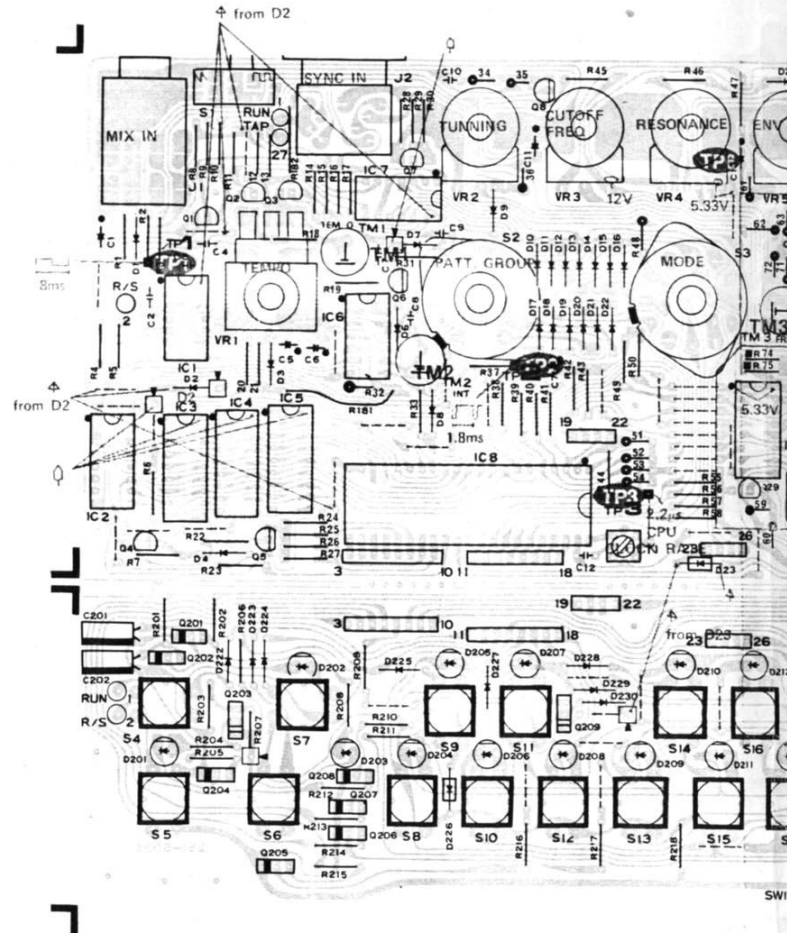


CAUTION:

The following adjustments will restore PATTERN WRITE mode.
If existing rhythm patterns are restored, locate a PATTERN with no rhythms or the easiest one to write and write it down.

View from component side

MAIN BOARD
OP3127-050
(7312705010)
(pcb 291-502C)



SWITCH BOARD
OP3127-040
(7312704010)
(pcb 291-503C)

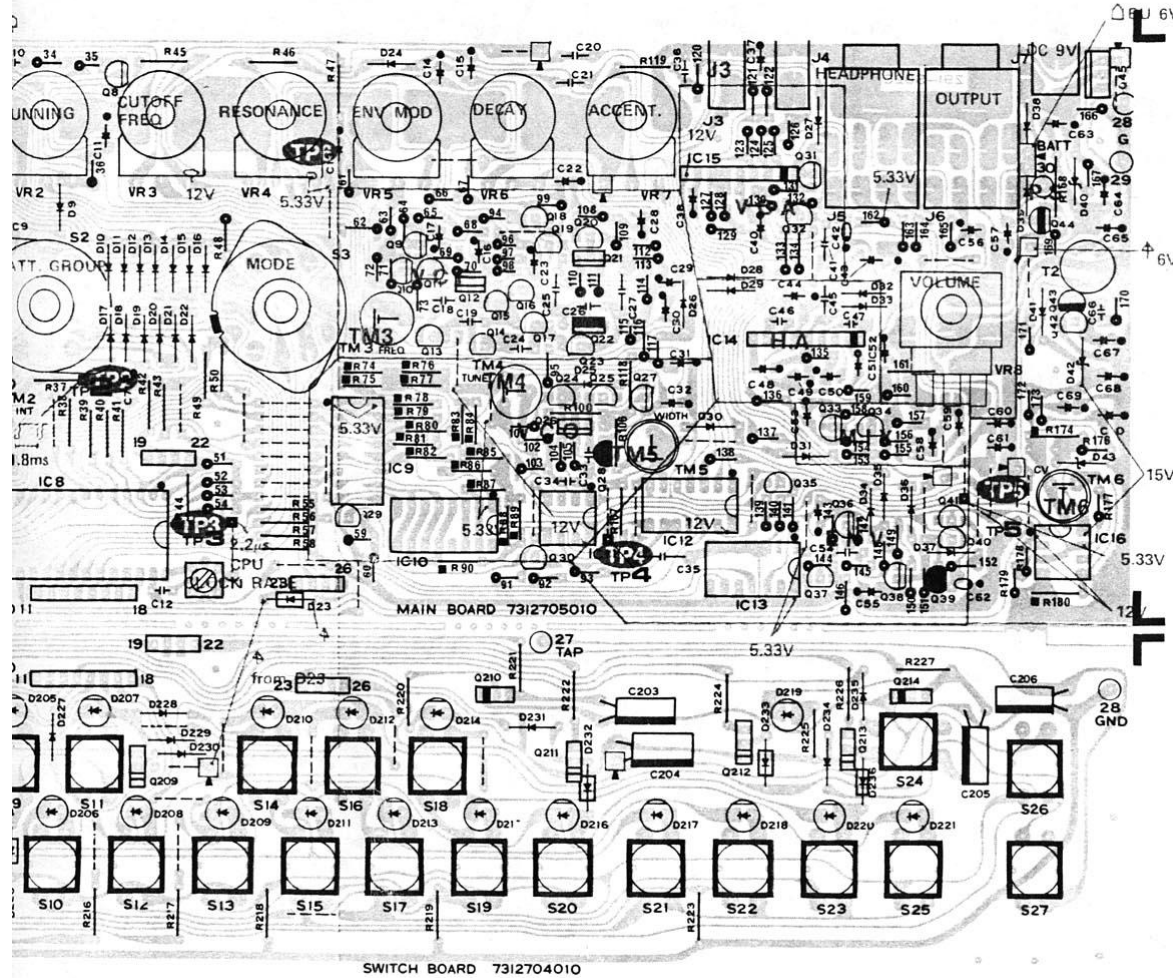
CAUTION:

The following adjustments will be done in PATTERN WRITE mode.
If existing rhythm patterns need to be restored, locate a PATTERN that contains no rhythms or the easiest ones to copy and write it down.

CV

Check point: CV out jack
With PITCH mode, press low C key and note the reading - CVL.
Press high C key, adjust TM6 for $CVL+1.000V\pm 3mV$ - CVM.
While holding down TRANSPOSE UP, press high C key, confirm that the reading is $CVM+1.000\pm 3mV$.

de



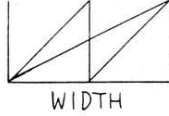
Feb.19,1982

VCO

Check point: Q28 source or S1 WAVE-FORM terminal.

Set TUNE in its middle position.

With PITCH mode. While tapping CL and CH keys alternately, adjust TM5 WIDTH for 2:1 waveforms:

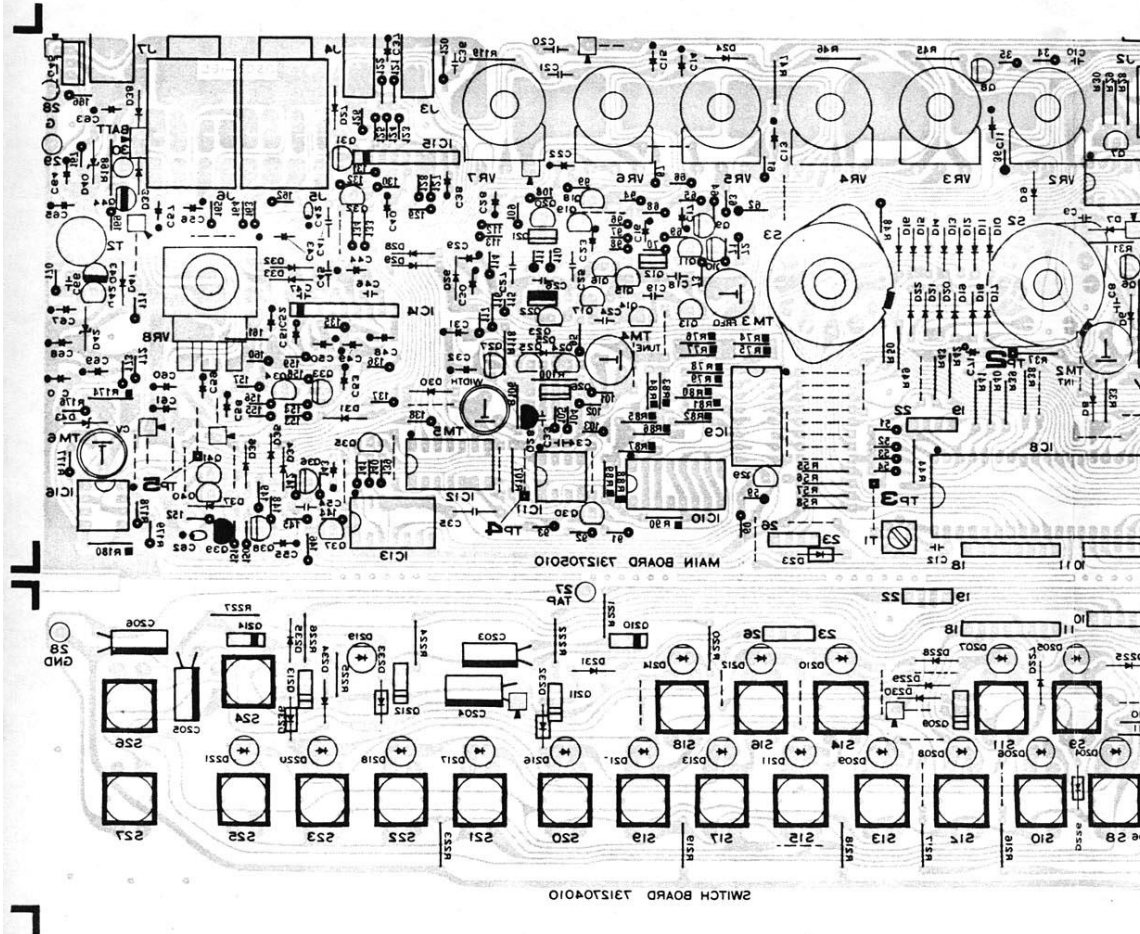


Press A key and adjust TM4 for 110Hz.
Confirm 4:1±0.5% with CL and CH +
TRANPOSE UP.

VCF

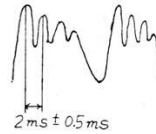
Check point:
Panel settings
CUTOFF FF
WAVEFORM
RES
ENV MOD,
DECAY, ACC

View from foil side



VCF
 Check point: TP6
 Panel settings:
 CUTOFF FREQ : center
 WAVEFORM : SAWTOOTH
 RES : Full clockwise
 ENV MOD,
 DECAY, ACC : Full counterclockwise

Afdjust TM3 for:



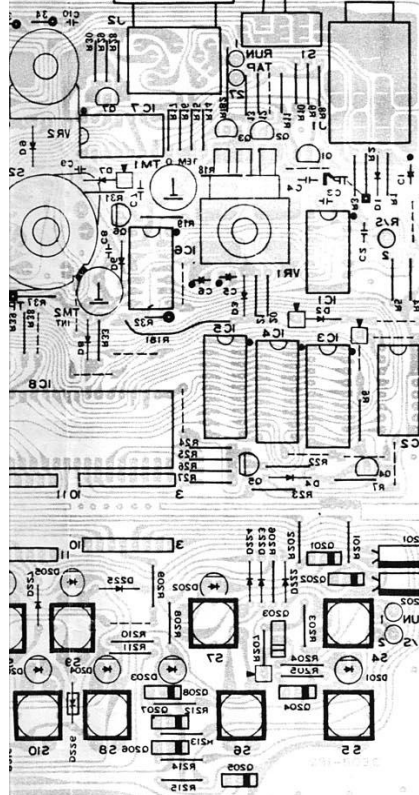
PRELIMINARY DIAGNOSIS

BATTERY

First check the DC voltage.
 Most users are not so familiar with battery operated equipment as to suspect aged dry cells in the malfunctioning (silent) TB-303 when LEDs other than RUN/BATTERY are lit up.

MISOPERATION

The versatile TB-303 inevitably needs to be manipulated according to what is instructed in the TB-303 Owner's manual.
 Symptoms listed below are likely to be found (by the user) in a unit which will be returned for servicing, as an evidence of defect.
 Confirm the operation following to the steps described in the manual — on the page(s) referenced.



- * Patterns (especially note value) are not reproduced as they should be.
 " [4] TO WRITE YOUR OWN BASS LINE" PP. 49-64
- * Incorrect PATTERN selection
 "IMPORTANT NOTES" P. 3
- * The LED above the selected PATTERN switch does not flush
 " ② Setting the STEP number" P. 53
 "b. WRITING A BASS PATTERN IN 3/4" PP. 55-57
- * TRACK fails to store data being written into it.
- * Phrases do not repeat in order in TRACK PLAY mode.
 "SELECTING THE TRACK" PP. 23-32
 "B. TO WRITE YOUR OWN BASS LINE" PP. 64-68
- * Melody does not run at the beginning of the 1st measure in TRACK PLAY mode.
 " [4] LET'S PLAY THE TRACK" PP. 31-32

	2SC536F
	2SA733P
	2SC2021R
	2SA937Q