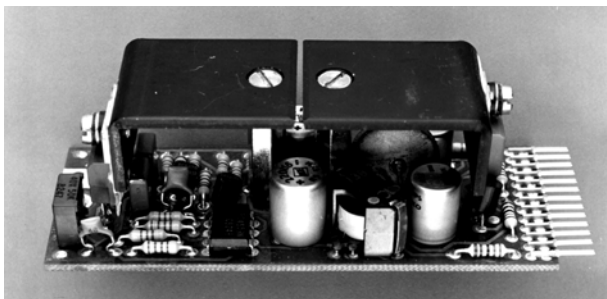

Loudspeaker Amplifier1.914.505

This low-power amplifier on a modular sub-card is designed to drive a 10...15 Ω speaker. Power output is about 2...3 W. As can be concluded from this specification, the amplifier is not intended for high-quality monitoring. It will be ideally suited, however, for pre-fader listening and similar applications. The amplifier's input is balanced and floating, with adjustable gain.



Technical Specifications

Input impedance	> 10 kΩ , balanced and floating (with transformer)
Nominal power output	2 W into 15 Ω
Power output	25 mW...2.5 W into 15 Ω , with 0 dBu input
Distortion	< 0.5% at 2 W < 0.15% at 500 mW
S/N	99 dB , ref. to 2 W at max. gain
Frequency response	-0.5 dB at 15 kHz
High pass filter	150 Hz , 12 dB/oct.

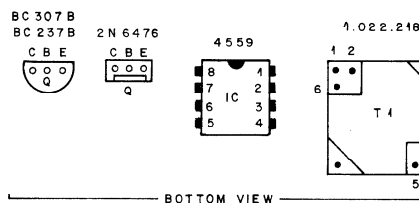
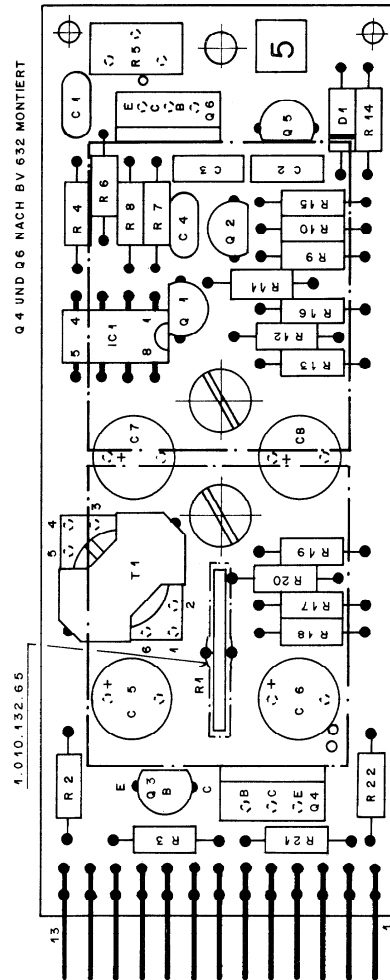
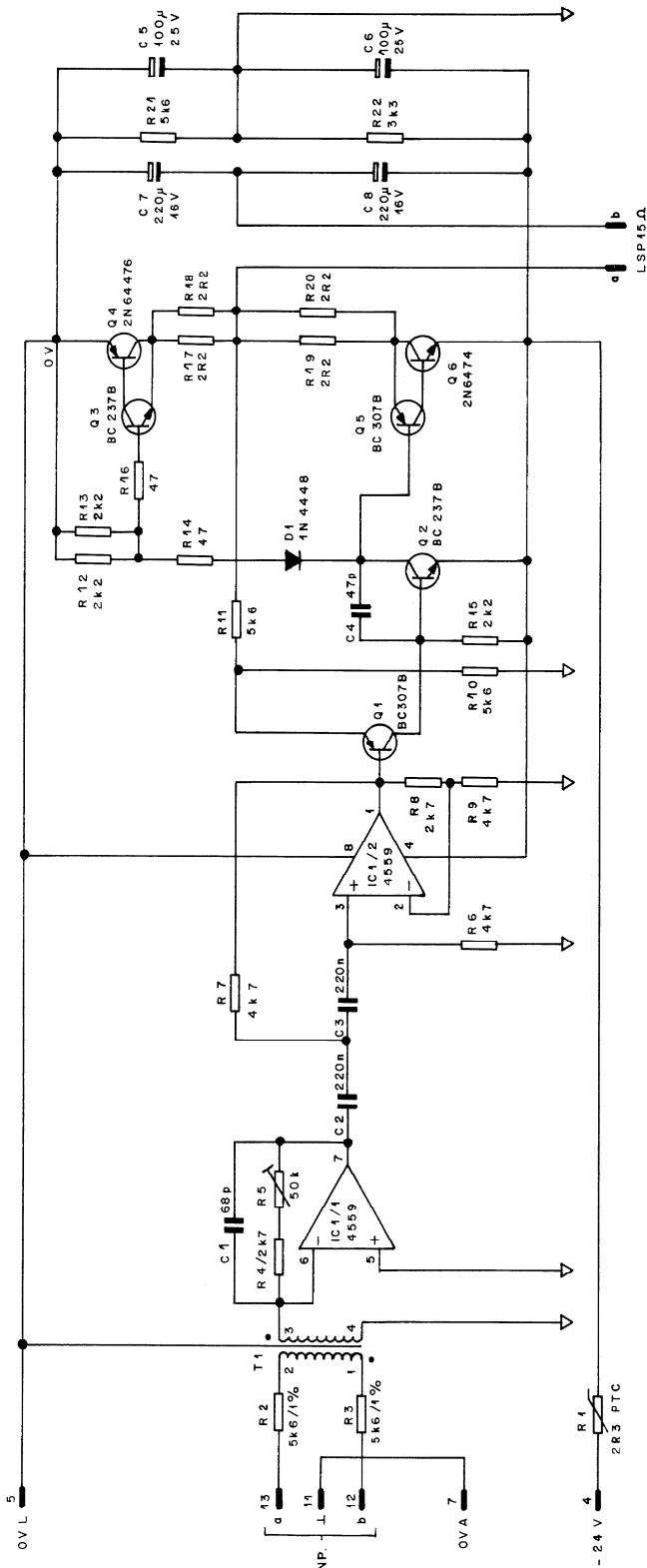
Supply: -24 V (40 mA idling, max. 220 mA fully driven)

Dimensions: **MS-card**, 34 \times 85 mm

Ordering Information: Loudspeaker amplifier

1.914.505.xx

MSC SPEAKER AMPLIFIER



CIS	PIN	EURO 32 PIN
INP a	13	1 7 21 27
INP b	12	2 8 22 28
(L)	11	3 9 23 29
40		
9		
8		
7		
6		
5	19	
0 V	4	20
- 24 V	3	4 10 24 30
OUT a	2	5 11 25 31
OUT b	1	

① 13. 9. 91			
STUDER REGENSDORF ZÜRICH	LSP AMPLIFIER 3 W (NR. 5)	1.914.505.00	

MSC SPEAKER AMPLIFIER

Ad	POS.	REF.No.	DESCRIPTION	MANUFACTURER
①	C.1	59.34.4680	68pF	CER
	C.2	59.06.0224	0,22µF	PE
	C.3	59.06.0224	0,22µF	PE
	C.4	59.34.2470	47pF	CER
	C.5	59.22.5101	100µF 25V	EL
	C.6	59.22.5101	100µF 25V	EL
	C.7	59.22.4221	220µF 16V	EL
	C.8	59.22.4221	220µF 16V	EL
	D.1	50.04.0125	1N4448	
	IC.1	50.09.0107	RC4559	
	P.1	54.01.0273	13P CIS	
	Q.1	50.03.0515	BC307B	
	Q.2	50.03.0436	BC237B	
	Q.3	50.03.0436	BC237B	
	Q.4	50.03.0345	2N6476	
	Q.5	50.03.0515	BC307B	
	Q.6	50.03.0344	2N6474	
	R.1	57.99.0210	2,3kΩ	PTC
	R.2	57.11.3562	5,6kΩ	
	R.3	57.11.3562	5,6kΩ	
	R.4	57.11.4272	2,7kΩ	
	R.5	58.01.9503	50kΩ	PMG
	R.6	57.11.4472	4,7kΩ	
	R.7	57.11.4472	4,7kΩ	
	R.8	57.11.4272	2,7kΩ	
	R.9	57.11.4472	4,7kΩ	
	R.10	57.11.3562	5,6kΩ	
	R.11	57.11.3562	5,6kΩ	
	R.12	57.11.4222	2,2kΩ	
	R.13	57.11.4222	2,2kΩ	
	R.14	57.11.4470	47Ω	
	R.15	57.11.4222	2,2kΩ	
	R.16	57.11.4470	47Ω	
	R.17	57.11.4229	2,2Ω	
	R.18	57.11.4229	2,2Ω	
	R.19	57.11.4229	2,2Ω	
	R.20	57.11.4229	2,2Ω	
	R.21	57.11.3562	5,6kΩ	
	R.22	57.11.4332	3,3kΩ	
	T.1	1.022.218.00	1:1	

CER=Ceramic, PE=Polyester, EL=Electrolytic, PTC=Pos. Temp. Coif., PMG=Cermet

1.914.505.00 LSP AMPLIFIER 3W (Nr. 5)

P. Casutt 07/09/83

1.914.505.00 LSP AMPLIFIER 3W (Nr. 5)

① A. Ho 30/11/83

END

