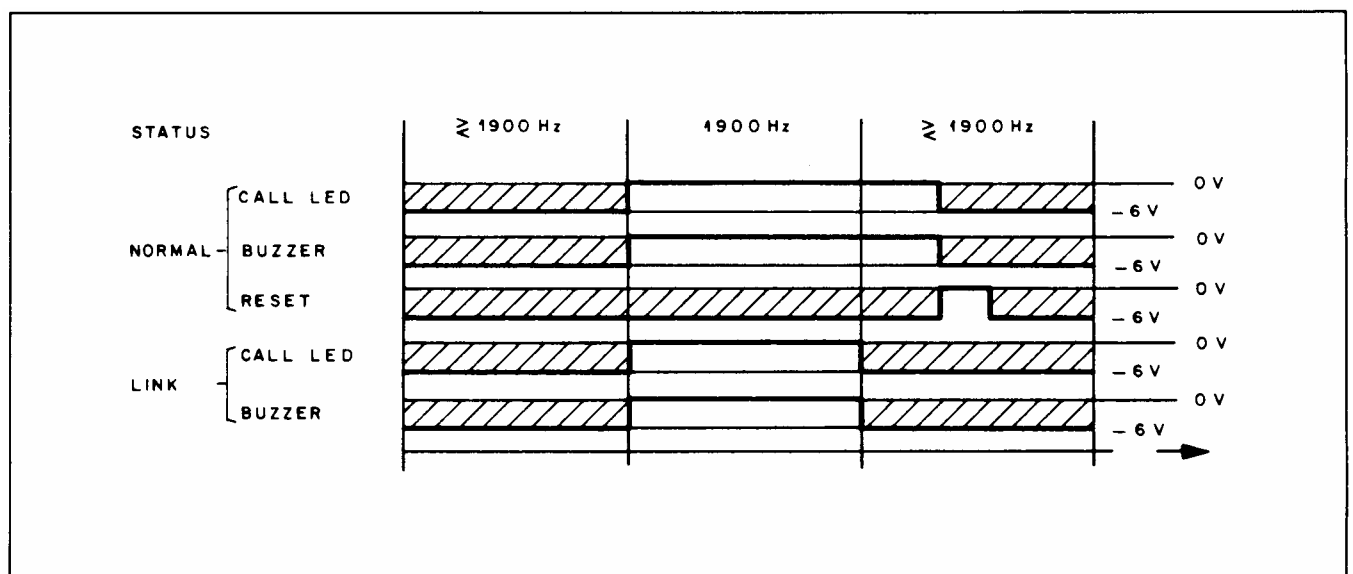
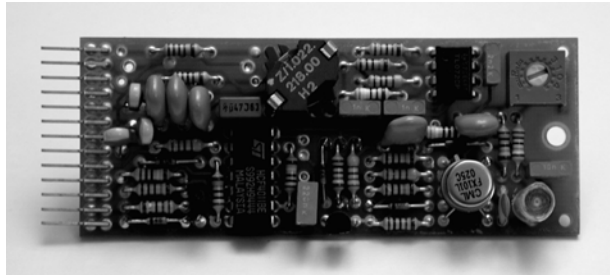


## Call Decoder 1900 Hz

1.914.522

This card contains a call receiver for the standardized 1900 Hz call frequency on OB lines. It is tuned to respond to 1900 Hz  $\pm 1\%$ . The receiver can be switched either to activate an optical or an acoustical signal for the duration of the 1900 Hz call (linked mode), or the acoustical signal can be selected to remain activated until reset (normal mode). The acoustical signal can be generated by an external buzzer (not supplied).



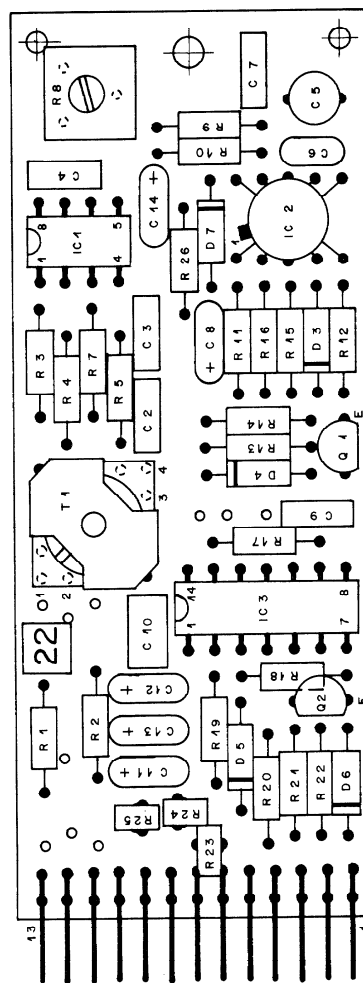
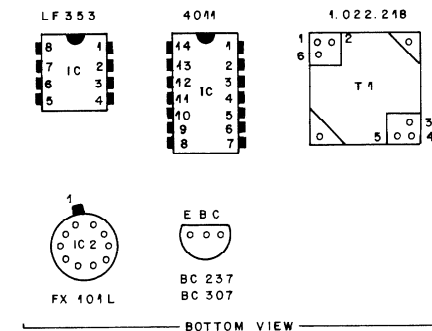
## Technical Specifications

<b>Input:</b>		<b>balanced, floating; no DC</b>
	Frequency	<b>1900 Hz, <math>\pm 1\%</math></b>
	Impedance	<b>&gt; 10 k<math>\Omega</math></b>
	Min. level	<b>-30 dBu</b>
	Nominal level	<b>+24 dBu</b>
<b>Supply:</b>		<b>+15 V (5 mA); -15 V (10 mA); -6 V (2 mA)</b>
	Insulation rating	<b>500 V<sub>DC</sub></b>

**Dimensions:** **MS-card, 34 × 85 mm**

**Ordering Information:** **Call decoder 1900 Hz**

1.914.522.xx



CIS	PIN	EURO 32 PIN			
		(a)	(b)	(c)	(d)
INPUT a	13	1	7	21	27
INPUT b	12	2	8	22	28
⊥	11	3	9	23	29
	10				
- 6 V	9	12			
- 15 V	8	14			
OVA	7	15			
+15 V	6	16			
OVL	5	19			
	4				
RESET	3	4	10	24	30
CALL SIGN.	2	5	11	25	31
BUZZER	1	6	13	26	31

0	21.9.91						
REGENDORF ZÜRICH		1900 Hz DECODER (NR.22)				1.914.522.00	

## Call Decoder 1900 Hz 1.914.522.00 ( 1)

Page: 1 of 1

Idx. Pos.	Part No.	Qty.	Type/Val.	Description
0 C 2	59.06.0102	1n0		PETP, 63V, 10%, RM5
0 C 3	59.06.0102	1n0		PETP, 63V, 10%, RM5
0 C 4	59.06.0222	2n2		PETP, 63V, 10%, RM5
0 C 5	59.05.2472	4n7		PP, 2.5%, 63V
0 C 6	59.34.4121	120p		CER 63V, 5%, N750
0 C 7	59.06.0103	10n		PETP, 63V, 10%, RM5
0 C 8	59.26.5229	2u2		SAL, 20%, 25V
0 C 9	59.06.0224	220n		PETP, 63V, 10%, RM5
0 C 10	59.06.5474	470n		PETP, 63V, 5%, RM5
0 C 11	59.26.2689	6u8		SAL 16V 20%
0 C 12	59.26.2689	6u8		SAL 16V 20%
0 C 13	59.26.2689	6u8		SAL 16V 20%
0 C 14	59.26.2689	6u8		SAL 16V 20%
0 D 3	50.04.0125	1N4448		75V, 150mA, 4ns, DO-35
0 D 4	50.04.0125	1N4448		75V, 150mA, 4ns, DO-35
0 D 5	50.04.0125	1N4448		75V, 150mA, 4ns, DO-35
0 D 6	50.04.0125	1N4448		75V, 150mA, 4ns, DO-35
0 D 7	50.04.1117	12V		Zener, 5%, 0.5W, DO-35
0 IC 1	50.09.0101	TL072		Dual op-amp biFET
0 IC 2	50.07.0032	FX101		IC FX-101 L, ,A
1 IC 3	50.07.1011	4011		Quad 2-inp NAND
0 P 1	54.01.0273	13p		Stecker CIS parallelsteck
0 Q 1	50.03.0515	BC307B		PNP 100mA 45V
0 Q 2	50.03.0436	BC237B		NPN 100mA 45V
0 R 1	57.11.3562	5k6		MF, 1%, 0207
0 R 2	57.11.3562	5k6		MF, 1%, 0207
0 R 3	57.11.3123	12k		MF, 1%, 0207
0 R 4	57.11.3104	100k		MF, 1%, 0207
0 R 5	57.11.3392	3k9		MF, 1%, 0207
0 R 7	57.11.5155	1M5		MF, 5%, 0207
0 R 8	58.01.8203	20k		Cermet, 10%, 0.5W, horizontal
0 R 9	57.11.3154	150k		MF, 1%, 0207
0 R 10	57.11.3104	100k		MF, 1%, 0207
0 R 11	57.11.3104	100k		MF, 1%, 0207
0 R 12	57.11.3103	10k		MF, 1%, 0207
0 R 13	57.11.3103	10k		MF, 1%, 0207
0 R 14	57.11.5225	2M2		MF, 5%, 0207
0 R 15	57.11.3104	100k		MF, 1%, 0207
1 R 16	57.11.5225	2M2		MF, 5%, 0207
0 R 17	57.11.3105	1M0		MF, 1%, 0207
0 R 18	57.11.3104	100k		MF, 1%, 0207
1 R 19	57.11.5225	2M2		MF, 5%, 0207
0 R 20	57.11.3105	1M0		MF, 1%, 0207
0 R 21	57.11.3104	100k		MF, 1%, 0207
0 R 22	57.11.3220	22R		MF, 1%, 0207
0 R 23	57.99.0206	50R		PTC, 25V, 0.5W
0 R 24	57.99.0206	50R		PTC, 25V, 0.5W
0 R 25	57.99.0206	50R		PTC, 25V, 0.5W
0 R 26	57.11.3391	390R		MF, 1%, 0207
0 T 1	1.022.218.00	1 : 1		EINGANGSTRAFO 1 : 1

End of List

## Comments:

(01) IC3, R16, R19 changed