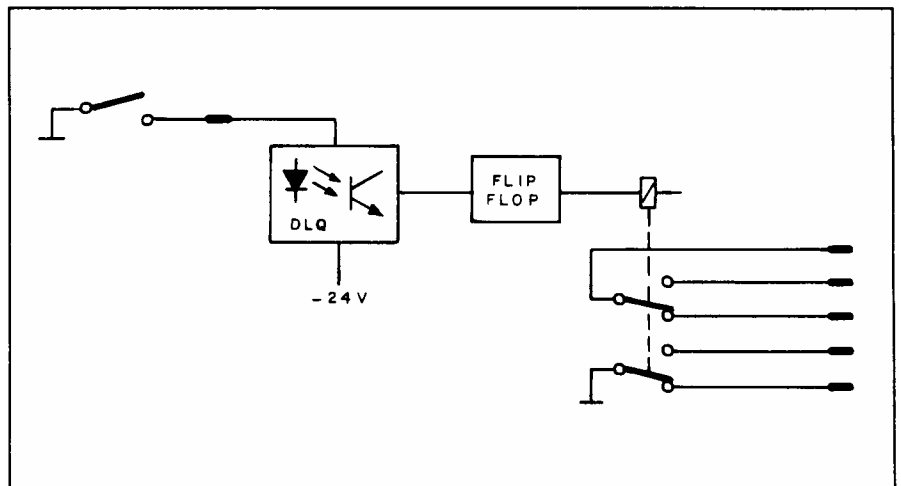
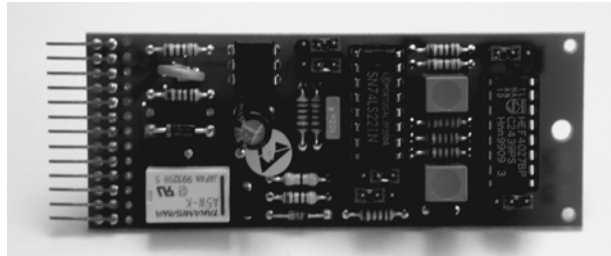


Flip-flop Unit

1.914.532

The Flip-flop Unit consists of a relay with two DPDT contacts and a flip-flop circuit with a control input (opto-coupler). A ground pulse from a non-latching switch applied to the input activates the relay. A next ground pulse will deactivate it again.



Technical Specifications

Input: floating, with opto-coupler

Relay contacts: Max. rating 100 V/0.5 A/30 W

Supply: -6 V for logic
-24 V for opto-coupler

Dimensions: MS-card, 34 × 85 mm

Ordering Information: Flip-flop unit

1.914.532.xx

MSC FLIP FLOP

