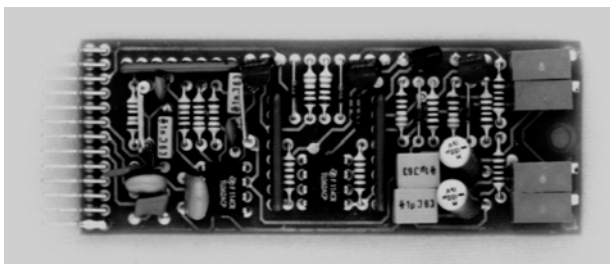


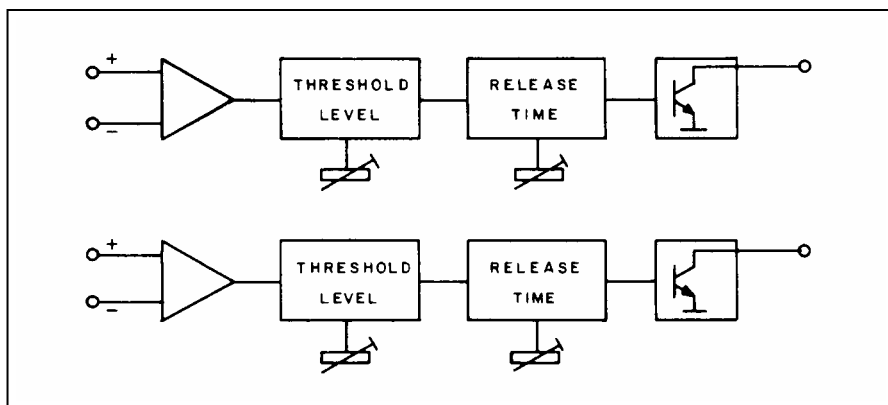
Dual Vox Detector

1.914.534

The Dual Vox Detector card contains two adjustable threshold level detector circuits. Threshold level ($-22\text{ dBu} \dots +16\text{ dBu}$) and release time ($0.2\text{ s} \dots 10\text{ s}$) are separately adjustable for two audio channels. These adjustments are effected very precisely with multi-turn trimmer potentiometers.



The high-impedance audio input is balanced. The open-collector output is prepared to activate a relay or an alarm device. A possible application of this card would be to detect incoming modulation.



Technical Specifications

Inputs:

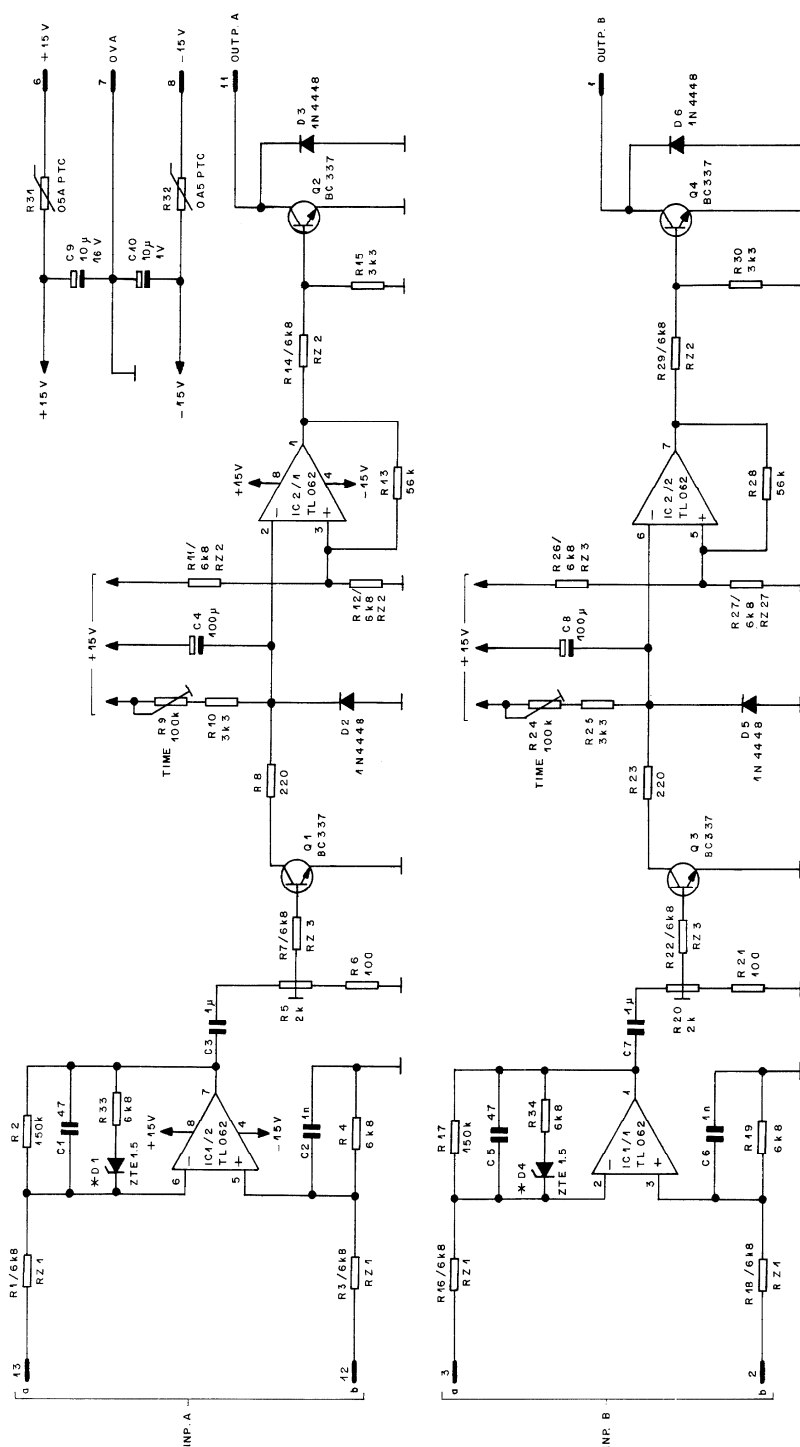
Impedance	$\geq 10\text{ k}\Omega$
Max. level	$+24\text{ dBu}$ ($0\text{ dBu} \hat{=} 0,775\text{ V}_{\text{rms}}$)
Frequency response	$75\text{ Hz} \dots 12\text{ kHz}$, -3 dB
Threshold level	$-22\text{ dBu} \dots +16\text{ dBu}$
Attack time	100 ms
Release time	$200\text{ ms} \dots 10\text{ s}$
Hysteresis	$\leq 1\text{ dB}$

Electronically balanced**Outputs:****Open-collector;** $U_{\text{CE}} \leq +45\text{ V}$; $I_{\text{max}} \leq 100\text{ mA}$ **Supply:** **$\pm 15\text{ V}$** ($\leq 15\text{ mA}$ / 4 mA idling)**Dimensions:****MS-card**, $34 \times 85\text{ mm}$ **Ordering Information:**

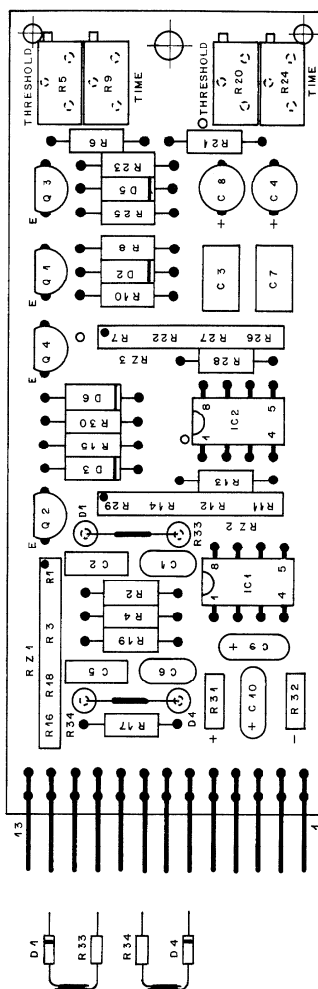
Dual vox detector

1.914.534.xx

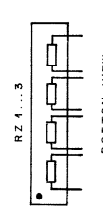
DUAL VOX DETECTOR MSC



* CATHODE RING CONNECTED TO THE POSITIVE POLE OF THE VOLTAGE.



CIS	PIN	EURO 32 PIN
INPUT A a	13	1
INPUT B b	12	2
OUTPUT	10	3
-15V	9	4
OVA	7	5
+15V	6	6
INPUT A a	3	10
INPUT B b	2	11
OUTPUT A	1	13
		26
		32



27.9.94			
STUDER REGENSDORF ZÜRICH	THRESHOLD LEVEL DETECTOR	ESE	1.914.534.00

MSC DUAL VOX DETECTOR

Ad	..POS..	...REF.No...	DESCRIPTION.....	MANUFACTURER
----	---------	--------------	------------------	--------------

01	C.....1	59.34.2470	47 pF 63V	CER 5%	
01	C.....2	59.34.5102	1000 pF 63V	PE 5%	
	C.....3	59.06.5105	1 uF	PE 5%	
	C.....4	59.22.3101	100 uF 10V	EL	
01	C.....5	59.34.2470	47 pF 63V	CER 5%	
01	C.....6	59.06.5102	1000 pF 63V	PE 5%	
	C.....7	59.06.5105	1 uF	PE 5%	
	C.....8	59.22.3101	100 uF 10V	EL	
	C.....9	59.26.2100	10 uF 16V	EL	
	C.....10	59.26.2100	10 uF 16V	EL	
01	D.....1	50.99.0183	ZTE1.5	1.5V ZENER	ITT
	D.....2	50.04.0125	1N4448		any
	D.....3	50.04.0125	1N4448		any
01	D.....4	50.99.0183	ZTE1.5	1.5V ZENER	ITT
	D.....5	50.04.0125	1N4448		any
	D.....6	50.04.0125	1N4448		any
	IC....2	50.09.0119	TL062	dual op.amp.	TI
	IC....3	50.09.0119	TL062	dual op.amp.	TI
	P.....1	54.01.0273		CIS, 13 pin	
	Q.....1	50.03.0516	BC337	NPN	any
	Q.....2	50.03.0516	BC337	NPN	any
	Q.....3	50.03.0516	BC337	NPN	any
	Q.....4	50.03.0516	BC337	NPN	any
	R.....1		6.8 kOhm	RZ 1	
01	R.....2	57.11.3154	150 kOhm		
	R.....3		6.8 kOhm	RZ 1	
01	R.....4	57.11.3682	6.8 kOhm		
	R.....5	58.05.0202	2 kOhm	Trim 10%	
	R.....6	57.11.3101	100 Ohm		
	R.....7		6.8 kOhm	RZ 3	
	R.....8	57.11.3221	220 Ohm		
	R.....9	58.05.0104	100 kOhm	Trim 10%	
	R.....10	57.11.3332	3.3 kOhm		
	R.....11		6.8 kOhm	RZ 2	
	R.....12		6.8 kOhm	RZ 2	
	R.....13	57.11.3563	56 kOhm		
	R.....14		6.8 kOhm	RZ 2	
	R.....15	57.11.3332	3.3 kOhm		
	R.....16		6.8 kOhm	RZ 1	
01	R.....17	57.11.3154	150 kOhm	1%	
	R.....18		6.8 kOhm	RZ 1	
01	R.....19	57.11.3682	6.8 kOhm		
	R.....20	58.05.0202	2 kOhm	Trim 10%	
	R.....21	57.11.3101	100 Ohm		
	R.....22		6.8 kOhm	RZ 3	
	R.....23	57.11.3221	220 Ohm		
	R.....24	58.05.0104	100 kOhm	Trim 10%	
	R.....25	57.11.3332	3.3 kOhm		
	R.....26		6.8 kOhm	RZ 3	
	R.....27		6.8 kOhm	RZ 3	
	R.....28	57.11.3563	56 kOhm		
	R.....29		6.8 kOhm	RZ 2	
	R.....30	57.11.3332	3.3 kOhm		
	R.....31	57.92.7001	0.3 Ohm	PTC .5A	
	R.....32	57.92.7001	0.3 Ohm	PTC .5A	
01	R.....33	57.11.3682	6.8 kOhm		
01	R.....34	57.11.3682	6.8 kOhm		
	RZ....1	57.88.2682	6.8 kOhm	R. Network 4*6.8k	
	RZ....2	57.88.2682	6.8 kOhm	R. Network 4*6.8k	
	RZ....3	57.88.2682	6.8 kOhm	R. Network 4*6.8k	

(01) update

(02) old name: THRESHOLD DETECTOR

CER = ceramic, EL = electrolytic, PE = polyester

MANUFACTURER Mot=Motorola, NS=National Semiconductor, Six=Siliconics,
TI=Texas Instruments

1.914.534.00	THRESHOLD LEVEL DETECTOR	FRI88/06/1800
1.914.534.00	THRESHOLD LEVEL DETECTOR	FRI88/09/0701
1.914.534.00	DUAL VOX DETECTOR (POS)	FRI88/10/2702