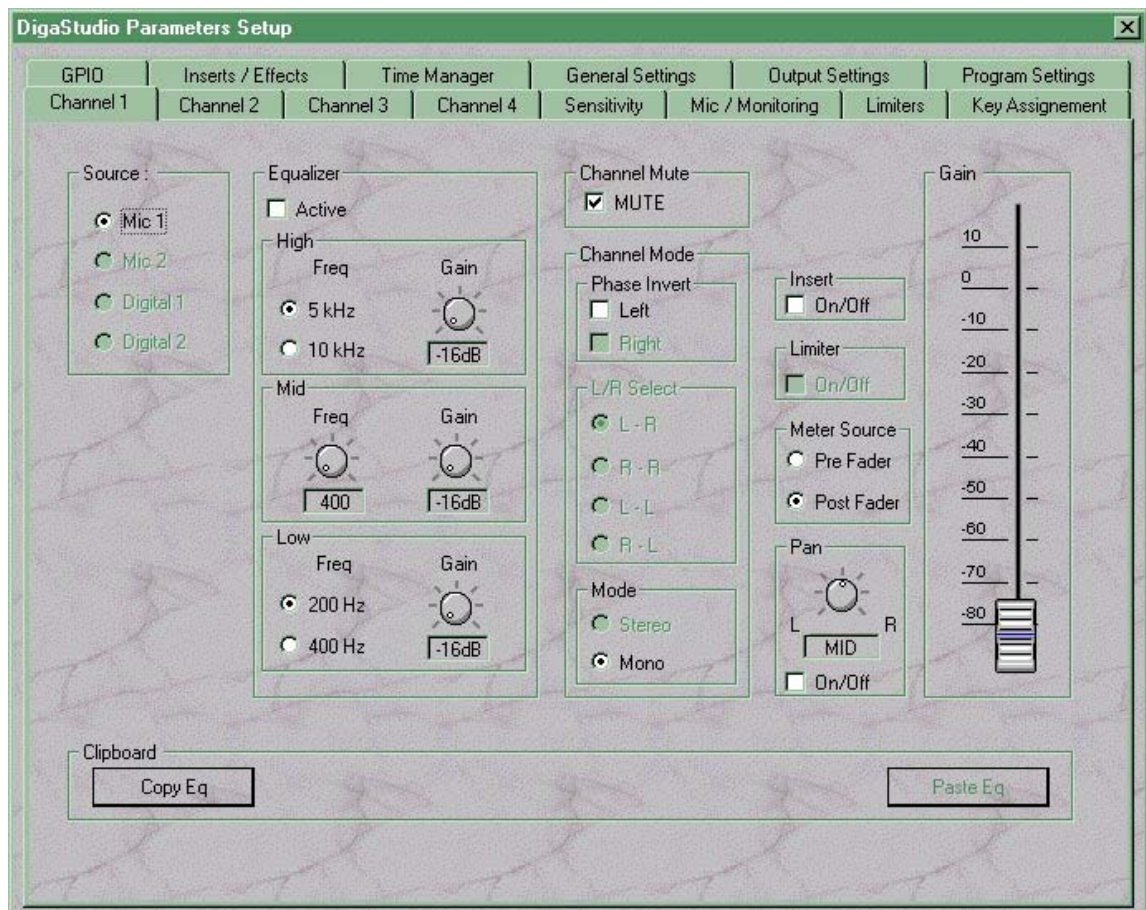


Screenshots of DigaStudio Pro Menu Pages

(extended audio settings)

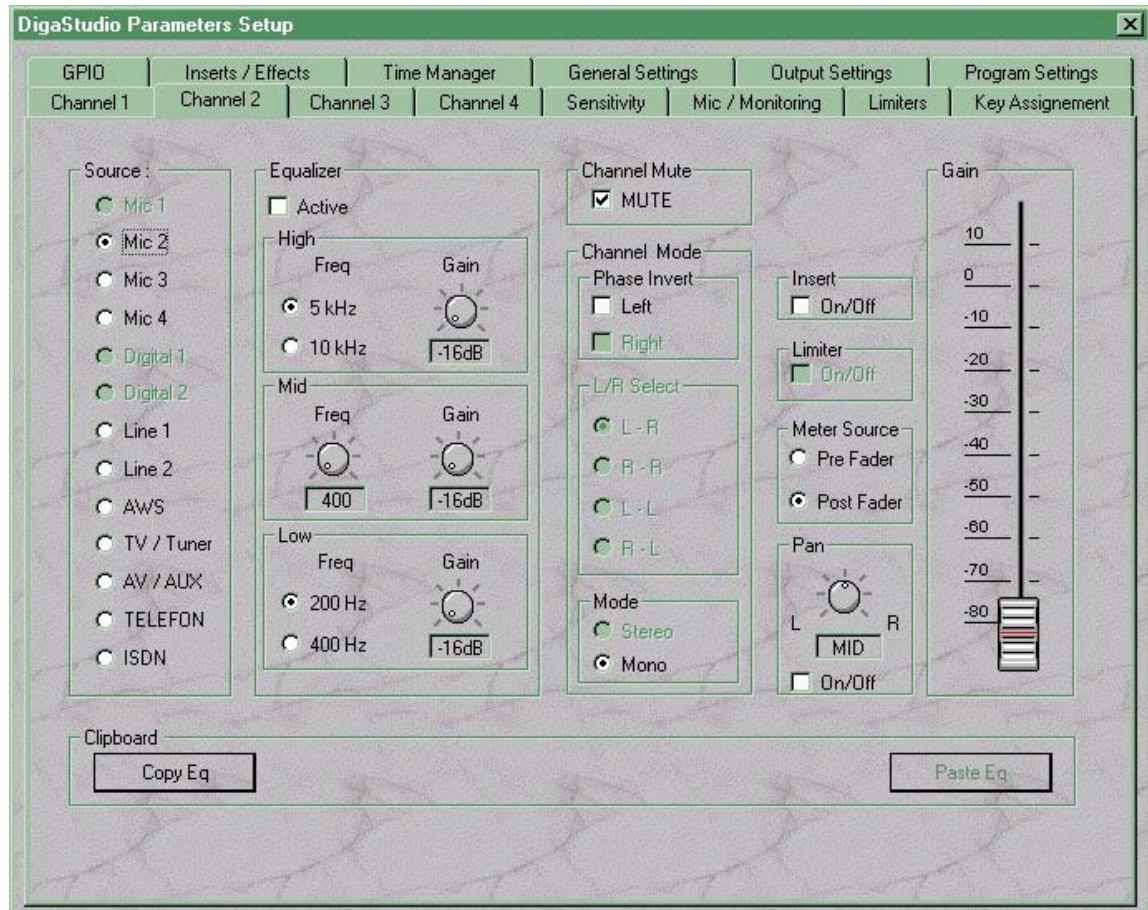
Menu * Channel 1 *



Remark:

Beyond the Eq-settings it is possible to activate a "High-Pass" filter for a microphone in the menu * Mic / Monitoring *

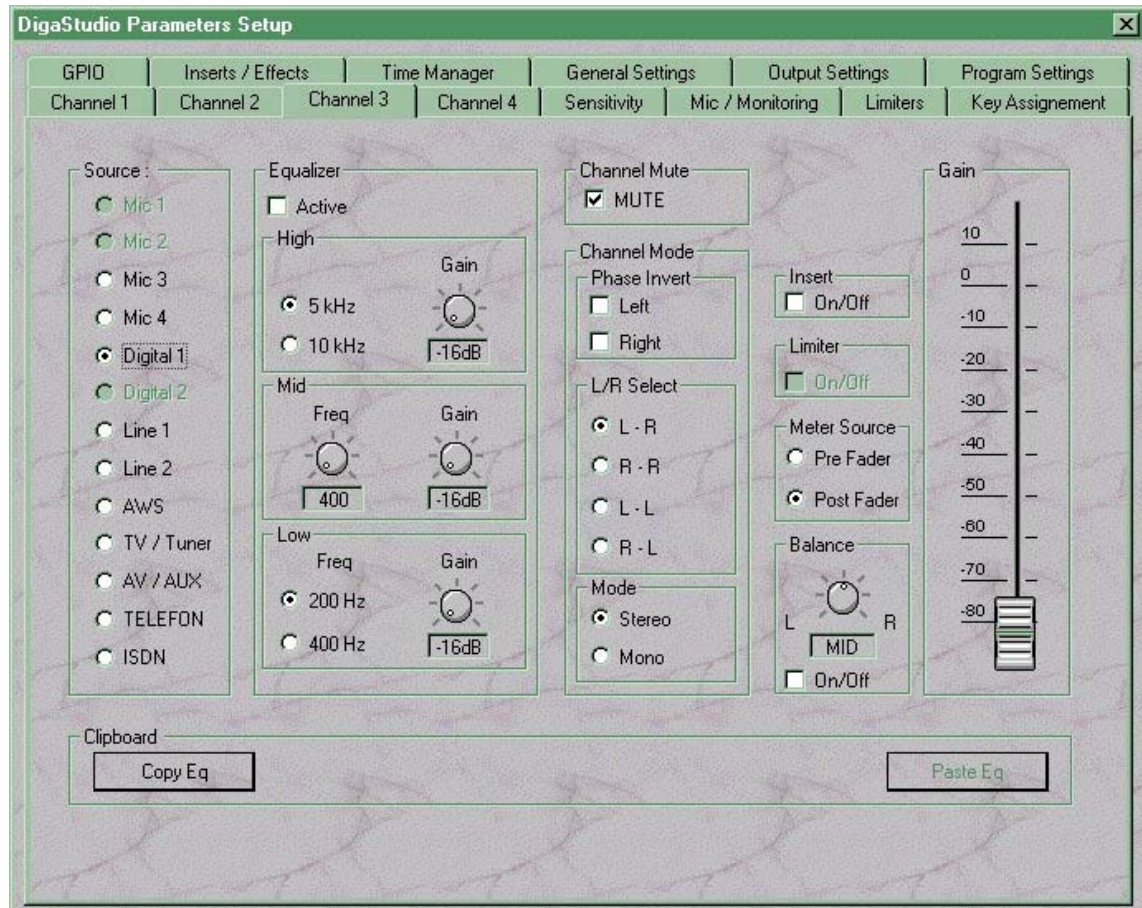
Menu * Channel 2 *



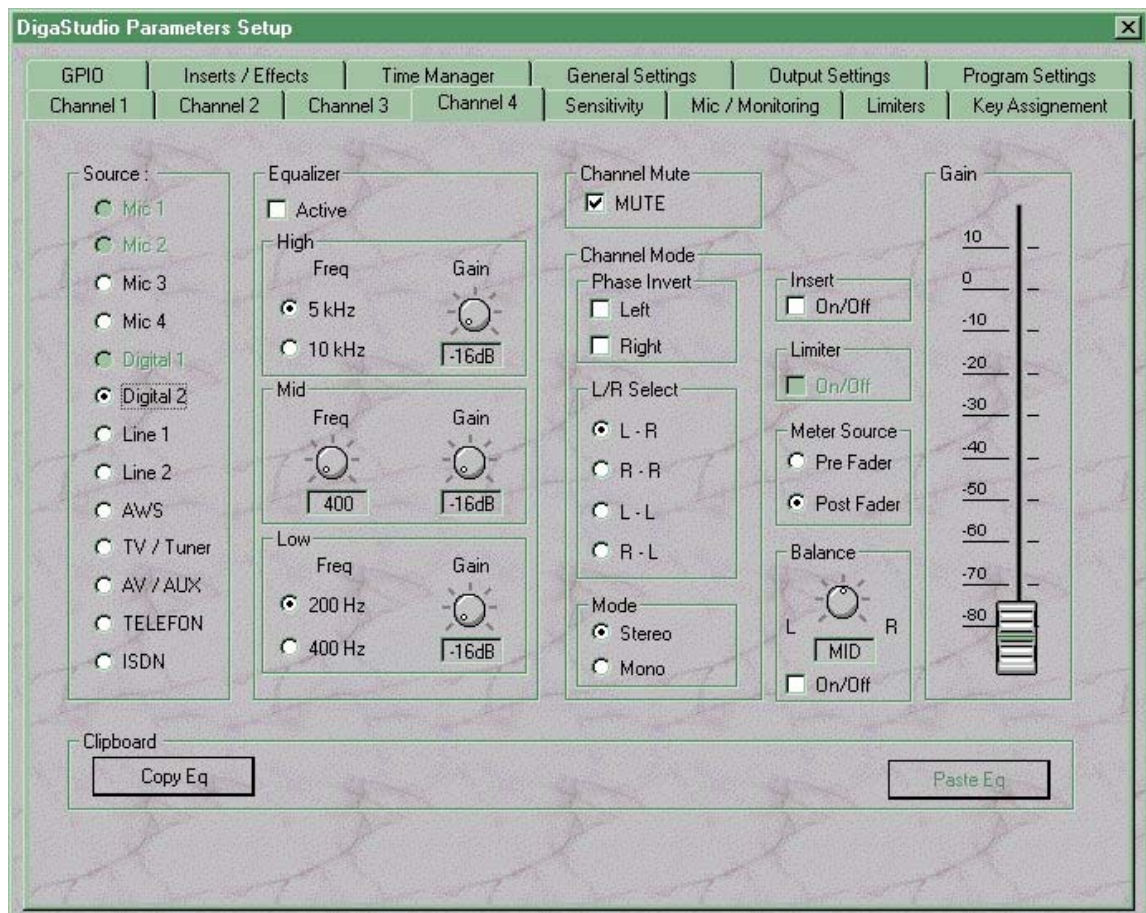
Remark:

The settings of the Equalizer range may be stored intermediately with "Copy Eq" and transferred (e.g. to Channel 3) by "Paste Eq" .

Menu * Channel 3 *



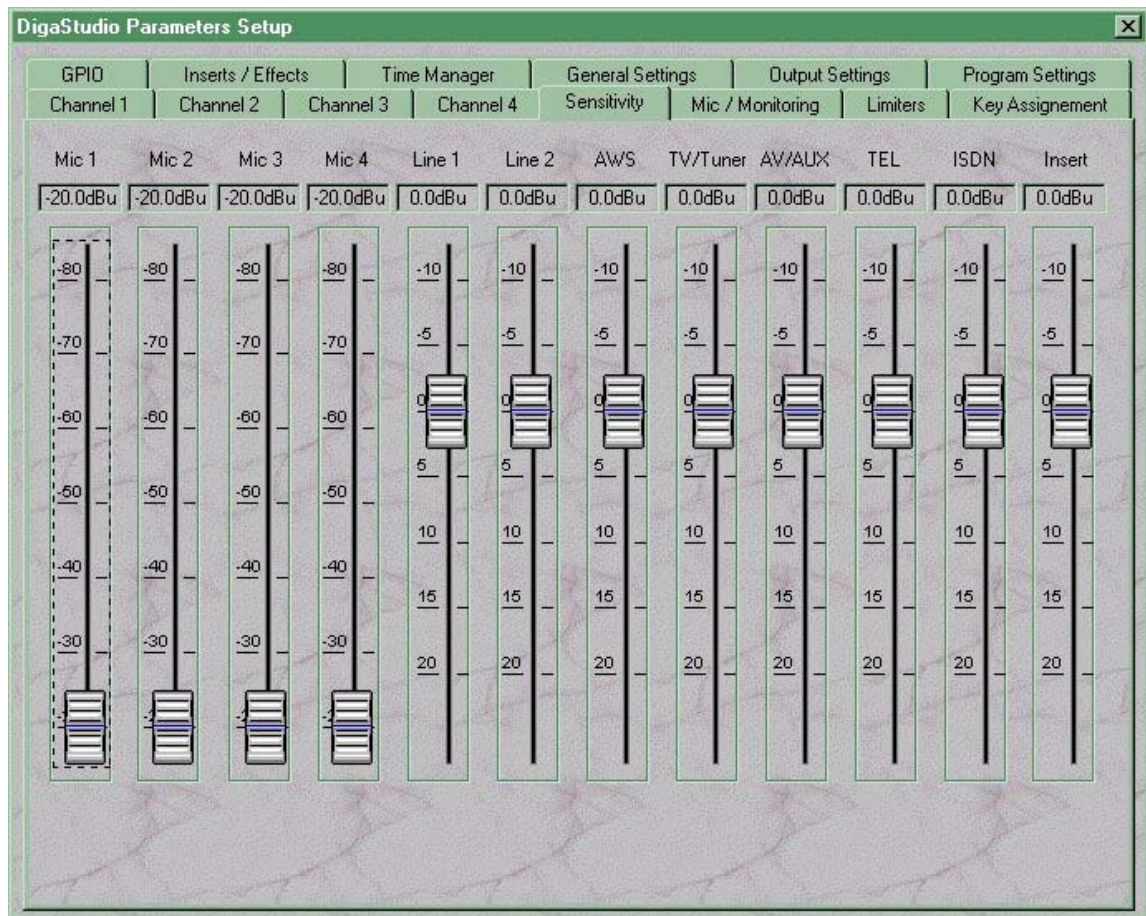
Menu * Channel 4 *



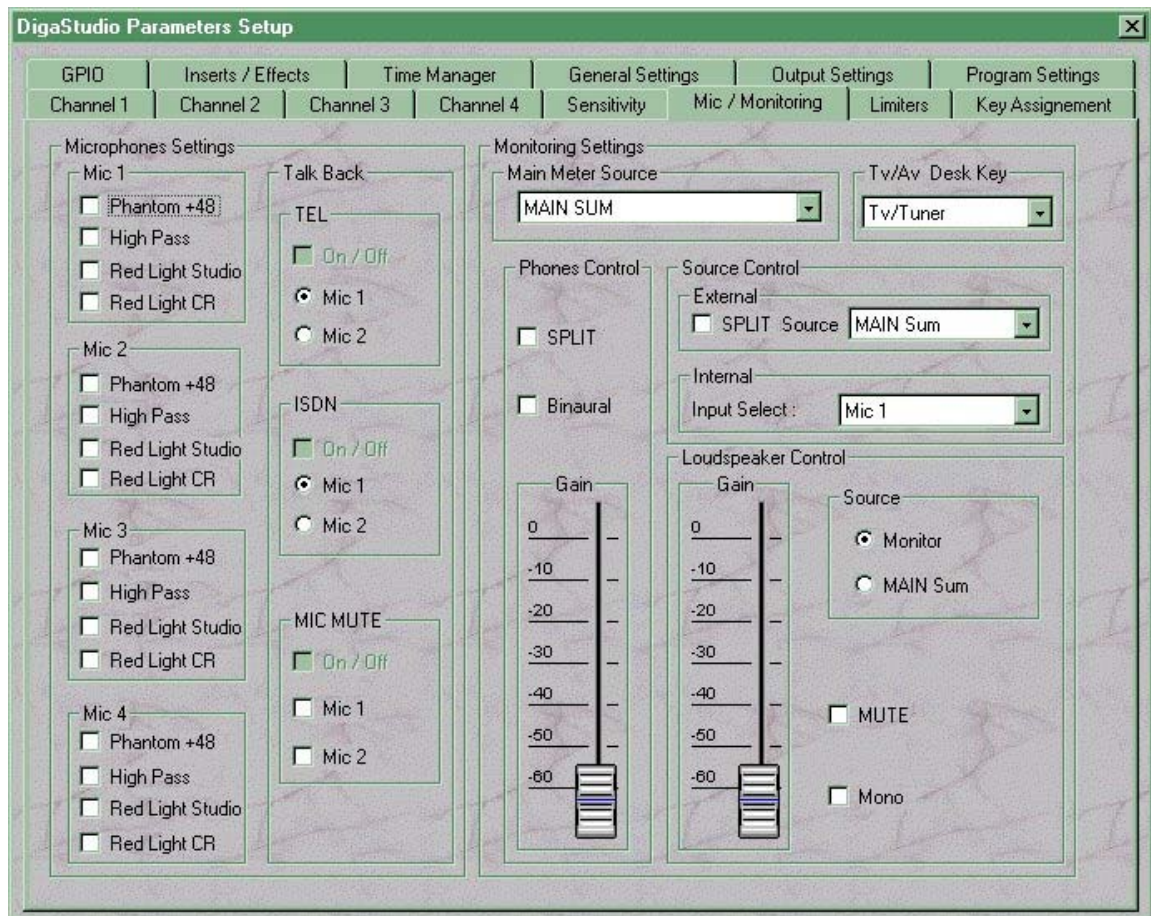
Remarks:

Channel 4 is only configurable via this menu since it is not physically available on the desk.

Menu * Sensitivity *



Menu * Mic / Monitoring *



Remark:

The TV / AV key in the Monitor section may be assigned to any source for monitoring (to be selected from the pull-down menu). See also Menu * **Key Assignment** *

Menu *Limiters *



Menu * Key Assignment *

DigaStudio Parameters Setup [X]

GPIO		Inserts / Effects		Time Manager		General Settings		Output Settings		Program Settings	
Channel 1	Channel 2	Channel 3	Channel 4	Sensitivity	Mic / Monitoring	Limiters	Key Assignment				
Channel 2											
Desk Key 1 :		Mic 1		Desk Key 5 :		Mic 1					
Desk Key 2 :		Mic 1		Desk Key 6 :		Mic 1					
Desk Key 3 :		Mic 1		Desk Key 7 :		Mic 1					
Desk Key 4 :		Mic 1		Desk Key 8 :		Mic 1					
Channel 3											
Desk Key 1 :		Mic 1		Desk Key 5 :		Mic 1					
Desk Key 2 :		Mic 1		Desk Key 6 :		Mic 1					
Desk Key 3 :		Mic 1		Desk Key 7 :		Mic 1					
Desk Key 4 :		Mic 1		Desk Key 8 :		Mic 1					
Monitoring											
TV		Tv / Av Desk Key									

Menu * GPIO *

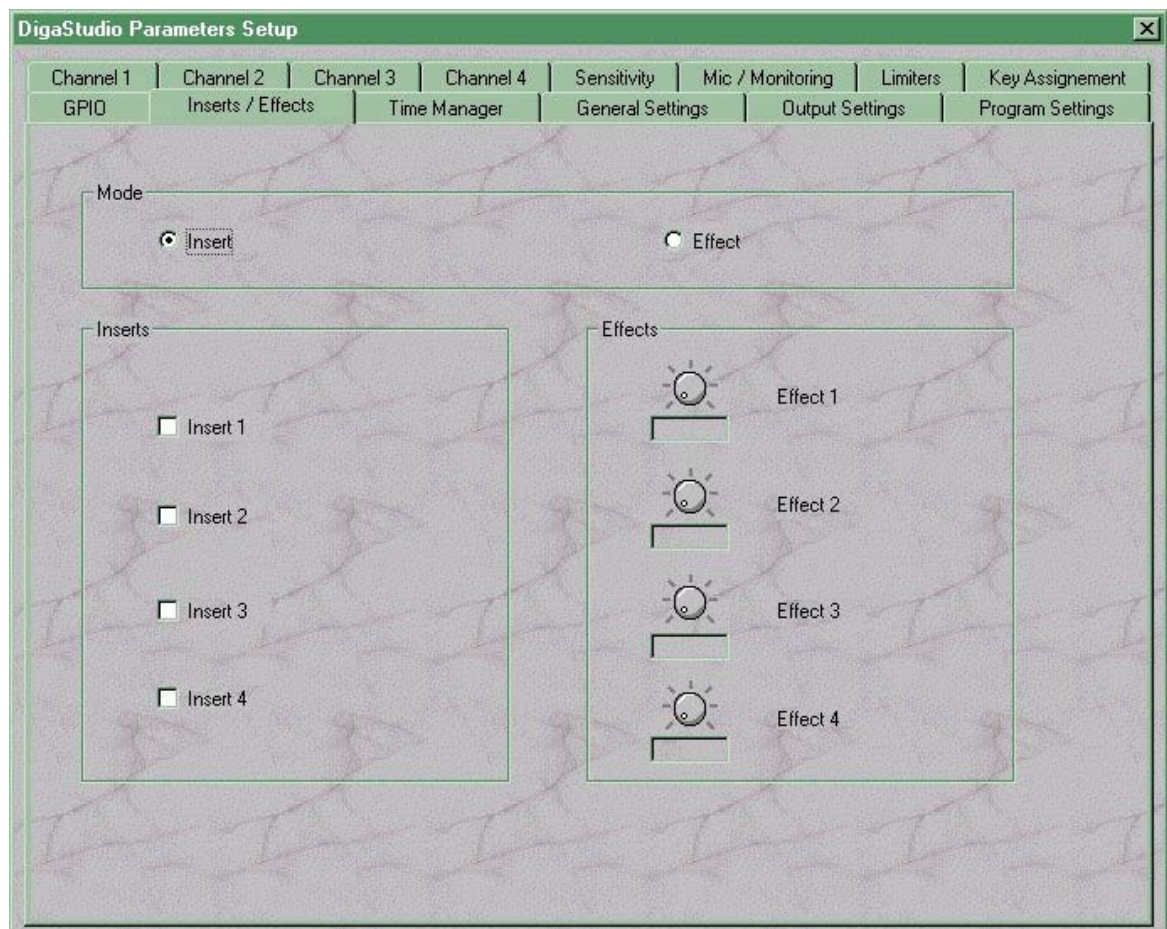


Remark:

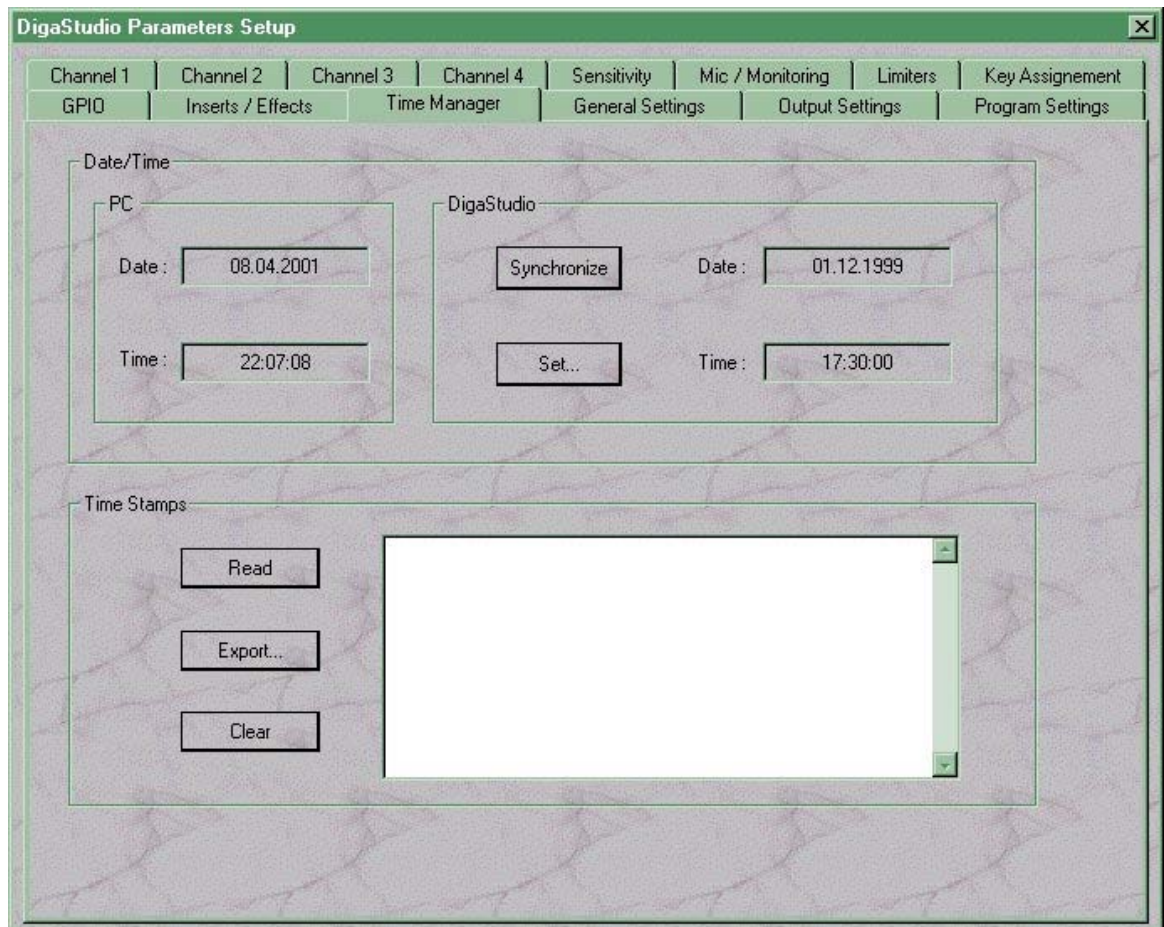
GP1....6 can be assigned either channel-specific or device-specific.

For Studio/Ctrl-Room Red Light signalisation see also menu *Sensitivity*. There it is possible to activate signalisations for several microphones for which it is only necessary to preselect globally "Red Light Studio" or "Red Light CR" at the respective GPI-output.

Menu * Inserts / Effects *



Menu * Time Manager *



Remarks:

- 1) The internal DigaStudio clock is to be adjusted to the PC time by "Synchronize" .
- 2) The time-stamps created during an editor session (key with clock icon on desk unit) may be recalled by "Read" . The last created stamps will appear topmost.

Menu * General Settings *

DigaStudio Parameters Setup [X]

Channel 1	Channel 2	Channel 3	Channel 4	Sensitivity	Mic / Monitoring	Limiters	Key Assignment
GPIO	Inserts / Effects	Time Manager	General Settings	Output Settings	Program Settings		

Keys

TEL HYBRID

☐ Toggle ☒ Push Button

RESERVE

Mode

☐ Toggle ☒ Push Button

Function

GPIO

Red Light District

CONTROL ROOM

STUDIO

0 dB Calibration

-9dBFS

0

-10

-20

On-Air Mode

☐ Active

Fader Mode

☐ Take Over

Menu * Output Settings *

DigaStudio Parameters Setup [X]

Channel 1	Channel 2	Channel 3	Channel 4	Sensitivity	Mic / Monitoring	Limiters	Key Assignment
GPIO	Inserts / Effects	Time Manager	General Settings	Output Settings		Program Settings	

N - X Mode (ISDN)

<input checked="" type="checkbox"/> Mic1	<input checked="" type="checkbox"/> Line2
<input checked="" type="checkbox"/> Mic2	<input checked="" type="checkbox"/> AWS
<input checked="" type="checkbox"/> Mic3	<input checked="" type="checkbox"/> TV/Tuner
<input checked="" type="checkbox"/> Mic4	<input checked="" type="checkbox"/> AV/AUX
<input checked="" type="checkbox"/> Dig1	<input checked="" type="checkbox"/> Telefon
<input checked="" type="checkbox"/> Dig2	<input type="checkbox"/> Isdn
<input checked="" type="checkbox"/> Line1	<input type="checkbox"/> Effect

Digital Out

Digital 1
SUM

Digital 2
SUM

AES Sync Mode

☒ Internal 48 kHz

☐ External AES

TEL N - 1

☒ N - 1 ☐ Effect Return

☐ Command

Master 0,00 dB

ISDN 0,00 dB

TEL 0,00 dB

Insert Send 0,00 dB

Menu * Program Settings *

The screenshot shows the 'DigaStudio Parameters Setup' window with the 'Program Settings' tab selected. The window has a title bar and a menu bar with the following options: Channel 1, Channel 2, Channel 3, Channel 4, Sensitivity, Mic / Monitoring, Limiters, Key Assignment, GPIO, Inserts / Effects, Time Manager, General Settings, Output Settings, and Program Settings. The 'Program Settings' tab is active, showing a 'Setup Manager' section with fields for 'Title', 'Description', and 'Last Program' (currently 'Unknown'). Below these fields is a 'Setup' section with buttons for 'Load', 'Save', 'Delete...', 'Factory Preset', and 'Login'. To the right of the 'Setup Manager' is a table with columns 'Title' and 'Description'.

User	
Title	Description

Remarks:

"Local" settings (Preset 2...10) are those storage locations which may be recalled from the DigaStudio Desk directly. "Global" settings are only stored in the PC.
The target folder for storing the profiles can be selected at the time of the basic installation of DigaStudio. Usually it will be saved in \Config\global in the Digastudio folder.