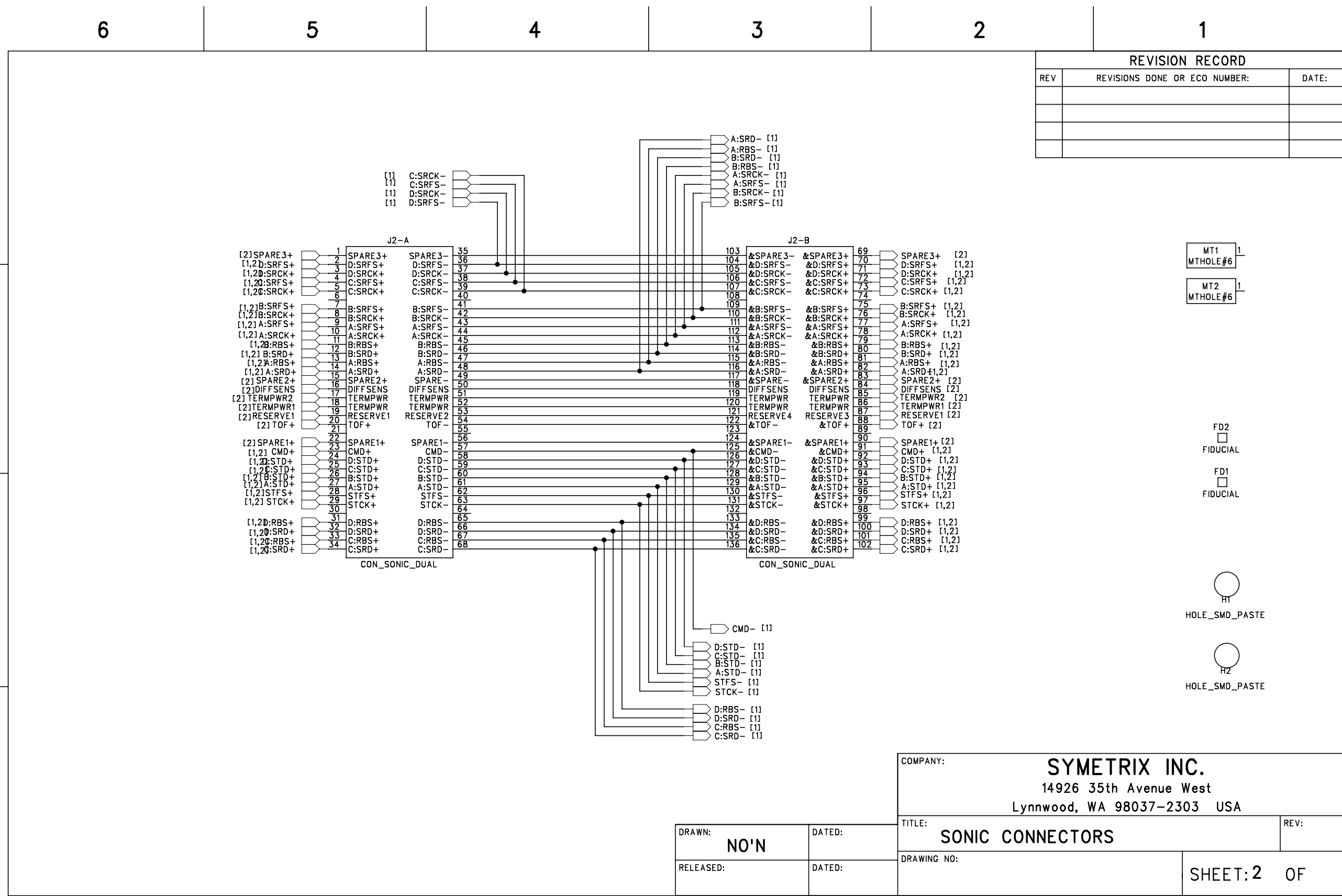


REVISION RECORD		
REV	REVISIONS DONE OR ECO NUMBER:	DATE:

COMPANY: **SYMETRIX INC.**
 14926 35th Avenue West
 Lynnwood, WA 98037-2303 USA

DRAWN: NO'N	DATED:	TITLE: RS485 TX & RX	REV:
RELEASED:	DATED:	DRAWING NO:	SHEET: 1 OF



REVISION RECORD		
REV	REVISIONS DONE OR ECO NUMBER:	DATE:

MT1
MTHOLE#6

MT2
MTHOLE#6

FD2
 FIDUCIAL

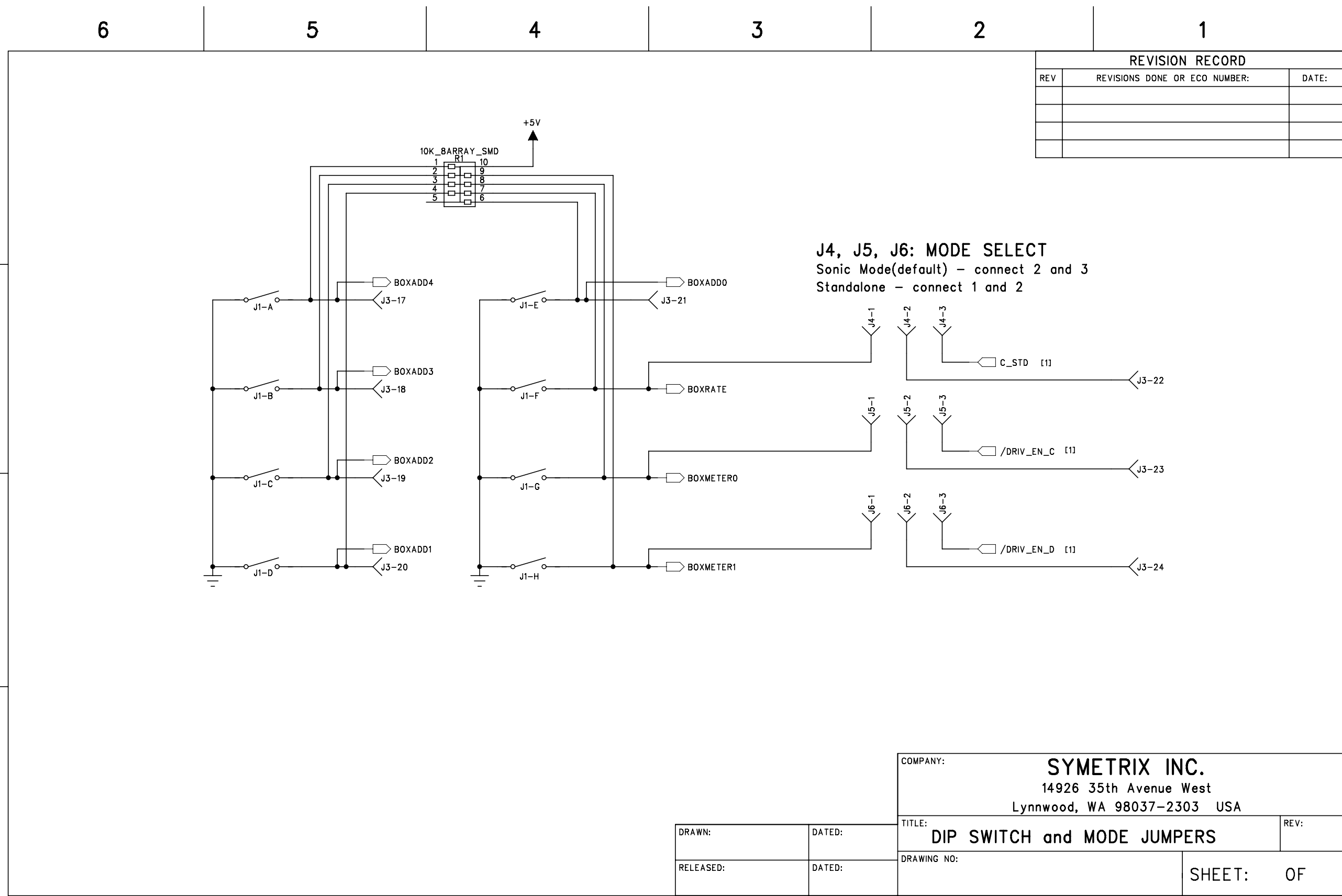
FD1
 FIDUCIAL

H1
HOLE_SMD_PASTE

H2
HOLE_SMD_PASTE

COMPANY:		SYMETRIX INC.	
		14926 35th Avenue West	
		Lynnwood, WA 98037-2303 USA	
DRAWN:		TITLE:	
NO'N		SONIC CONNECTORS	
RELEASED:		DRAWING NO:	
		SHEET: 2 OF	

DATED:	
DATED:	



REVISION RECORD		
REV	REVISIONS DONE OR ECO NUMBER:	DATE:

COMPANY: **SYMETRIX INC.**
 14926 35th Avenue West
 Lynnwood, WA 98037-2303 USA

DRAWN:	DATED:	TITLE: DIP SWITCH and MODE JUMPERS	REV:
RELEASED:	DATED:	DRAWING NO:	SHEET: OF