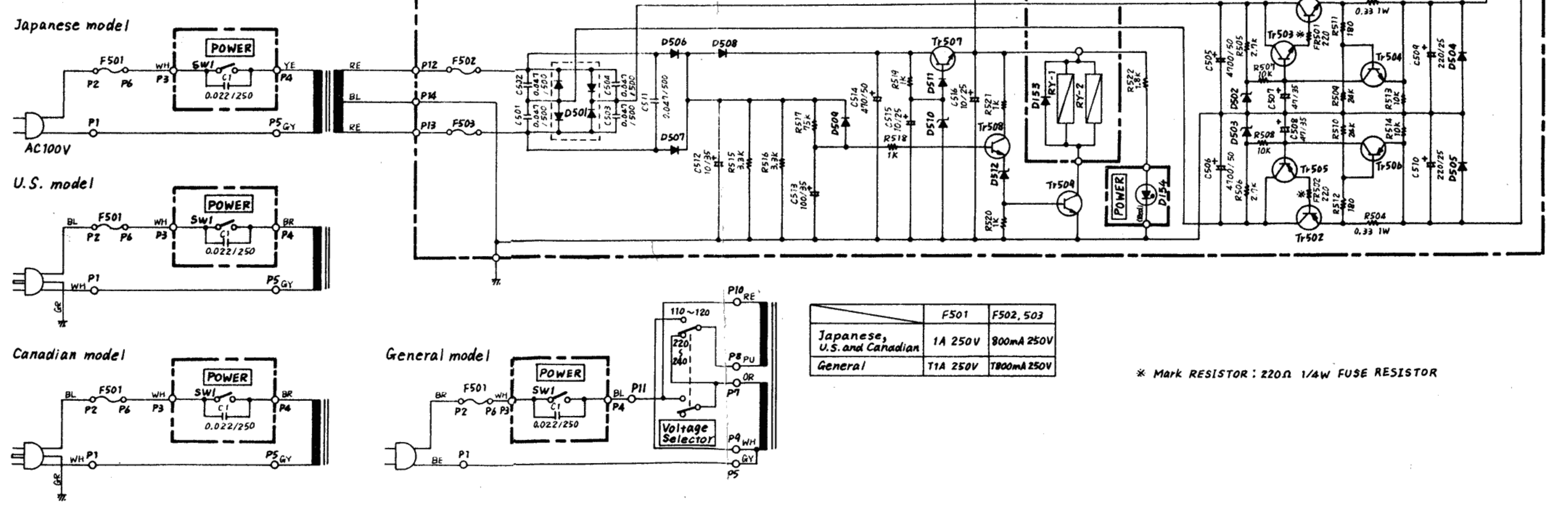
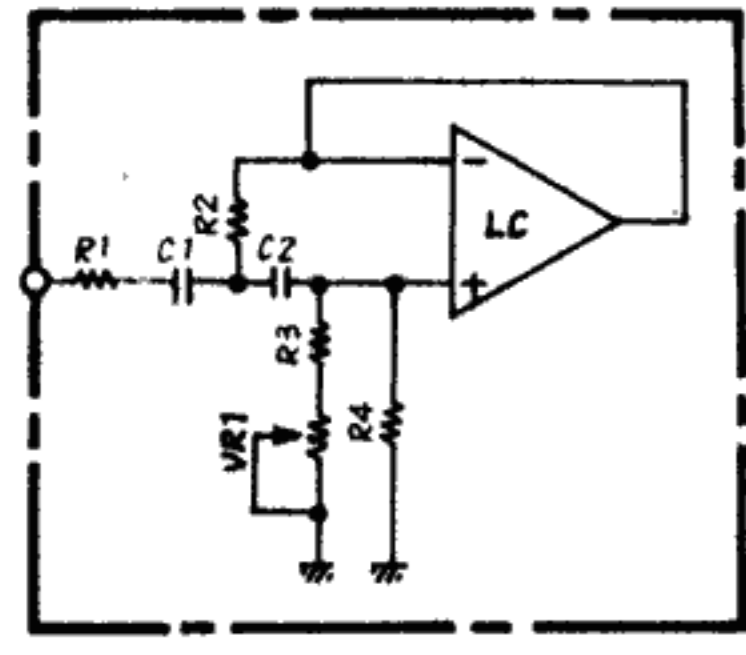


Bch Same as Ach

	VR1	R1	R2	R3	C1	C2	IC1	R4
LC 1	20 Hz	200K	750	470	1M	0.12	4558	47K
LC 2	25 Hz	200K	750	470	410K	0.82	4558	1/2
LC 3	31.5 Hz	200K	620	470	820K	0.68	4558	1/2
LC 4	40 Hz	200K	620	470	820K	0.56	4558	
LC 5	50 Hz	200K	560	470	910K	0.47	4558	1/2
LC 6	63 Hz	200K	560	470	910K	0.39	4558	
LC 7	80 Hz	200K	560	470	820K	0.27	4558	1/2
LC 8	100 Hz	200K	560	470	1M	0.22	4558	
LC 9	125 Hz	200K	560	470	1M	0.18	4558	1/2
LC 10	160 Hz	200K	560	470	820K	0.15	4558	
LC 11	200 Hz	200K	560	470	820K	0.12	4558	1/2
LC 12	250 Hz	200K	560	470	910K	0.082	0.01	4558
LC 13	315 Hz	200K	560	470	820K	0.068	0.0082	4558
LC 14	400 Hz	200K	510	470	910K	0.056	0.0056	4558
LC 15	500 Hz	200K	510	470	910K	0.047	0.0047	4558
LC 16	630 Hz	200K	510	470	910K	0.039	0.0039	4558
LC 17	800 Hz	200K	510	470	1M	0.027	0.0027	4558
LC 18	1 kHz	200K	430	470	1M	0.022	0.0022	4558
LC 19	1.25 kHz	200K	430	470	910K	0.018	0.0018	4558
LC 20	1.6 kHz	200K	430	470	820K	0.015	0.0015	4558
LC 21	2 kHz	200K	430	470	820K	0.012	0.0012	4558
LC 22	2.5 kHz	200K	150	470	910K	0.0082	0.001	4558
LC 23	3.15 kHz	200K	100	470	910K	0.0068	820P	4558
LC 24	4 kHz	200K	10	470	820K	0.0056	680P	4558
LC 25	5 kHz	200K	10	470	820K	0.0047	470P	4558
LC 26	6.3 kHz	200K	10	470	340K	0.0033	820P	4558
LC 27	8 kHz	100K	-	470	340K	0.0027	680P	4558
LC 28	10 kHz	100K	-	470	330K	0.0022	560P	4558
LC 29	12 kHz	100K	-	470	330K	0.0018	470P	4558
LC 30	16 kHz	100K	-	470	270K	0.0015	340P	4559
LC 31	20 kHz	100K	-	470	330K	0.0012	270P	4559



	F501	F502, 503
Japanese, U.S. and Canadian	1A 250V	800mA 250V
General	T1A 250V	T800mA 250V

* Mark RESISTOR: 220Ω 1/4W FUSE RESISTOR

YAMAHA Q2031 GRAPHIC EQUALIZER